



MISSOURI CHESS ASSOCIATION

MISSOURI CHESS BULLETIN

WWW.MOCHESS.ORG



GRANDMASTER BENJAMIN FINEGOLD ARRIVES
AS THE GM-IN-RESIDENCE
FOR THE CHESS CLUB & SCHOLASTIC CENTER



Volume 37 Number One—Winter 2010 Issue
Serving Missouri Chess Since 1973



TABLE OF CONTENTS

Missouri Chess Bulletin

~Volume 37 Number 1 - Winter 2010~

Top Missouri Chess Players.....	Pg 3
From the Editor	Pg 4
Tournament Winners	Pg 5
Recent News in Missouri Chess.....	Pg 6-7
US Women's Championship Recap.....	Pg 8
Meet the Board.....	Pg 9
Featured Game.....	Pg 10-11
~ Selden Trimble	
GM Finegold Comes to Town.....	Pg 12-13
~ Bob Howe	
National Youth Action, 2009	Pg 14-15
~ Tim Nesham	
Two on Two Team Tournament.....	Pg 16-17
~ Mike Wilmering	
Rising Young Stars.....	Pg 18-19
~ Ron Luther	
Thanksgiving Open Report	Pg 20
~Mike Wilmering	
Upcoming Tournaments.....	Pg 22-23
Membership & Subscription Information/Board Contacts.....	Pg 24
Scholastic Schedule	Pg 25
State Champions.....	Pg 27
Missouri Chess Hall of Fame	Back Cover



The Missouri Chess Bulletin is the official publication of the Missouri Chess Association, a not-for-profit organization which promotes and supports chess in Missouri. The Missouri Chess Bulletin was founded in 1973 and is published quarterly. Your letters and writings are welcome. All submissions become the property of the MCA and the MCA reserves the right to edit any and all material received. Published opinions are those of contributors and do not necessarily reflect the views of the MCA.

- Missouri Chess Bulletin Layout and Design by Thomas R. Rehmeier -

MISSOURIANS ON THE USCF TOP 100 LISTS — December 2009

Overall IM Michael Brooks (2444) 71st

Age 17	Brad Schlosser (1912)	59th	Age 9	Nathan Phan (1347)	87th
Age 16	Henry Cao (1852)	83rd	Age 8	Jason Zhou (1201)	65th
Age 14	Isaiah Gadson (1995)	31st	All Women	Margaret M. Hua (1752)	90th
Age 13	William Nesham (1726)	83rd	Girls Under 13	Margaret M. Hua (1688)	16th
Age 12	Kevin Y. Cao (2127)	7th	Girls Under 16	Joanna Gossell (1523)	73rd
	Jialin Ding (2099)	11th		Jonht Bechthold (1482)	83rd
	William Tong (1817)	44th	Correspondence	Laurence Anderson (2320)	28th
Age 11	Margaret M. Hua (1752)	46th		Harry Ingersol (2285)	38th
	Stephen Zhang (1601)	80th		Barry Walker (2234)	60th

MISSOURI'S TOP 100 PLAYERS

1	GM Benjamin Finegold	2611
2	IM Michael Brooks	2441
3	Charles Lawton	2327
4	Kenneth Jones	2225
5	Loal Davis	2224
6	Ronald Luther	2217
7	Richard Benjamin	2200
8	Bob Holliman	2200
9	FM Robert Sulman	2200
10	Mark Bohannon	2159
11	Andrew Witte	2149
12	Bronik Matwijkiw	2148
13	Tomislav Juricic	2144
14	James McLaughlin	2124
15	Kevin Cao	2123
16	James Voelker	2108
17	Robert Jacobs	2100
18	Jialin Ding	2095
19	Craig La Salle	2091
20	Nathaniel Fast	2070
21	Kenneth Thomas	2058
22	Joshua Frank	2049
23	Waldo Odak	2047
24	King Christian	2045
25	Zebedee Fortman	2036
26	James Davies	2025
27	Nick Karlow	2012
28	Kevin Johnson	2001
29	Paul Cornelison	2000
30	Isaiah Gadson	1998
31	Pranav Akolkar	1995
32	Daniel Huff	1990
33	Nathan Swinger	1980
34	Shan Siddiqi	1967
35	Jeffery Van Order	1956
36	Selden Trimble	1938
37	Joseph Garnier	1933
38	Daniel Roberts	1933
39	John Boyer	1921
40	Kenneth Fee	1917
41	Dwight Beasley	1916
42	Albert Howlett	1907
43	Steven Bange	1905
44	Adil Skuka	1900
45	Frank Smith	1897
46	Darius Masuhud	1896
47	Tony Rich	1894
48	Daniel Juengel	1893
49	Brad Schlosser	1890
50	Robert Taras	1887

USCF January Supplement— Includes players active in the past 12 months.

51	Tim Blaco	1883
52	William Tong	1881
53	Robert Cima	1876
54	Renzo Herrera	1866
55	Mike Clark	1833
56	Kenneth Gurley	1831
57	Marcus Scott	1828
58	Alex Marler	1823
59	Daniel Coryea	1819
60	Henry Cao	1813
61	Tom Epplin-Zapf	1808
62	Paul Goddard	1807
63	Thomas Rehmeier	1804
64	Stephen Landrum	1800
65	Randy Giminez	1800
66	Jeff Eskew	1798
67	Edil Karabiev	1796
68	Tony Dutiel	1795
69	Jacob Wilkins	1794
70	Matthew Barrett	1788
71	Warren Graham	1773
72	Joe Piotrowski	1771
73	Roger Smith	1766
74	Behrooz Vakil	1765
75	Bradley Herbst	1760
76	Tim Nesham	1754
77	Margaret Hua	1750
78	Daniel Rethemeyer	1744
79	Max Benecke	1741
80	Daniel Todd	1740
81	Allen Bishop	1731
82	Templin Kauschen	1730
83	Greg Clark	1727
84	Jonathan Shure	1725
85	Edward Dromgoole	1720
86	Spencer Conklin	1717
87	Namit Gaur	1715
88	William Starnes	1712
89	William Collin	1705
90	Bob Howe	1704
91	Gunter Kellotat	1700
92	Steven Rand	1700
93	Carl Priesendorf	1696
94	William Nesham	1694
95	Leonardo Severino	1691
96	Ryan Mc Culla	1681
97	Linu Alex	1675
98	Elie Solomon	1674
99	Matt Schoen	1672
100	Christopher Castellanos	1671

From The Editor

Greetings Missouri Chess Players. This edition begins the 38th continuous year of the Missouri Chess Bulletin. The publication has seen many changes over the years, but its core mission remains the same, to provide you with the information to help you continue enjoying this wonderful game of chess. I'd like to take this opportunity, as we begin a new year, to thank all the editors, reporters, contributors, and volunteers who have made it possible for the MCA to provide this service for close to four decades. Thank you all!

I was saddened to hear of the passing of James Alverson, a regular at Missouri Tournaments for many years. I've included his obituary in the recent news section, but couldn't resist to tell a story here as well. James, you may recall, graced the cover the Missouri Chess Bulletin in the Summer 2007 issue after grabbing the Missouri Novice Class State Title at the tender age of 80. I happened to be the director of that event, and I still remember the enthusiasm and excitement James had as I handed him his trophy. Even today it makes me smile to remember how he looked at me with a twinkle in his eye and declared "I can't wait to show this to my son!" Its not every day you find yourself handing a grown man a trophy he's won, then watch him race off to proudly show off it to his son! But that was the case that day, and I'm glad he got that moment to shine as a State Champion. Don't we all hope we're still enjoying the game and playing like a champion at 80!

As for me, I'm setting my sights on just playing well this year, and I'm looking forward to many great events on the horizon. St Louis and Columbia have already filled the calendar with events, and I'm hoping some other areas in the state follow suit and continue to stay active so everyone gets an opportunity to play some great chess in 2010. I know I already have events like the Mid-America Open, the St. Louis Open, the US Championships, the Missouri Class Championships, the Mizzou Quads, and the Missouri Chess Festival highlighted on my calendar, but I've saving room for more. I hope to see many of you at those events, and on the pages of the next MCB.

Bob Howe



Look for these and more in the Upcoming Spring Edition of the MCB...

- Report on the State Scholastic Championships held on Feb 27th
- Report on the Continental Chess Association's giant Mid-America Open being held in St. Louis.
- A Full Preview of the US Championships.
- Articles, annotated games, and interesting stories from YOU! The members that make up the MCA.

*Deadline for articles and
games for the Spring issue is
April 10th, 2010.*

2nd Annual Metro Class Championship — February 13th, 2010

3SS,G/120. Location: Chess Club & Scholastic Center of Saint Louis,
4657 Maryland Ave. Saint Louis MO 63108,

♔ Prizes: b/40 \$1200, \$200 and trophy for 1st in each M/X, A, B, C, D, U1200/UNR

♔ Entry Fee: \$35, \$30 for annual members of the club, if registered by 2/12

♔ Registration: 9-9:45am. Rounds: 10am, 2:15, 6:30

MCA membership required for MO residents from \$5,

Advance entries/info: 314-361-CHESS

4657 Maryland Ave., Saint Louis, MO 63108

info@saintlouischessclub.org, www.saintlouischessclub.org

Congratulations to these recent Tournament Winners:

CCSCSL 2 on 2 Team Tournament:

Open: Doug Eckert & Jim McLaughlin
U/3800 Todd Plagemann & Dennis Humphries
U/3100 Tim Nesham & Nathan Phan
U/2400 Benji Wolff & Andrew Schatz



Alexander Alekhine Open Ron Luther & Nathan Swinger

Thanksgiving Open Nick Karlow

Ioplin Autumn Open: Robert Larson

Christmas Open: Steven Bange

New Year's Bash: Ron Luther



14th Annual Mid-America Open March 19-21, 2010

*****WorldChessLive Grand Prix Point Event—100 Enhanced GPP*****

5SS, 40/2, SD/1 (2-day option, rds 1-2 G/70), Crowne Plaza Hotel, Clayton. 7750 Carondelet Ave., Saint Louis MO 63105. **\$\$ 20,000 b/250 paid entries** (re-entries, unrs in U1200-U2000, count as half, U900 Section one quarter), minimum \$16,000 (80% of each prize) guaranteed.

In 7 sections: Open: \$2000-1000-500-300, clear winner or 1st on tiebreak \$100 bonus, top U2300 \$800-\$400, FIDE rated.

Under 2200: \$1400-700-400-300.

Under 2000: \$1400-700-400-300.

Under 1800: \$1400-700-400-300.

Under 1600: \$1200-600-300-200.

Under 1400: \$1200-600-300-200.

Under 1200: \$800-400-200-100.

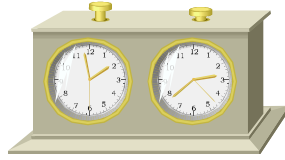
Under 900: \$200-100-60-40

Entry Fee: 3-day \$108.50, 2-day \$107.50 mailed by 3/9, all \$109 online at chesstour.com by 3/16, \$110 phoned to 406-896-2038 by 3/16 (entry only, no questions), \$120 at site. **Under 1200 Section** \$20 less.

Under 900 Section \$70 less. Re-entry \$60; not available in Open Section. No checks at site, credit cards OK. MCA membership. (\$5; higher with printed magazine) required for Missouri residents. 3-day schedule: **Registration ends Friday 6 pm**, rounds Friday 7 pm, Saturday 11-6, Sunday 9-3:15. 2-day schedule: Registration ends Saturday 10 am, rounds Saturday 11-2:30-6, Sunday 9-3:15. Byes: OK all; must commit before round 3, Open section by round 2. **Hotel Rate:** \$87, 888-303-1746, 314-726-5400, request chess rate, reserve by 3/3 or rate may increase.

Entries: Send to Continental Chess, Box 249, Salisbury Mills NY 12577. Questions: 845-496-9658.

Recent News in Missouri Chess



The reigning U.S. Chess Champion, Grandmaster Hikaru Nakamura, has confirmed he will participate in the Saint Louis Open this year, scheduled to be held at the Chess Club and Scholastic Center of Saint Louis, on April 10th - 11th. Not since the 2003 Missouri Open can I recall a Grandmaster coming to play in a locally organized event in Missouri. The tournament, which is always one of the biggest drawing events of the year has some extra incentive to play in 2010, with every participant having a chance to end up paired with the two time US Champ. Add in the expectation of GM Benjamin Finegold also playing and it is a tournament that you won't want to miss.

Missouri lost one from its chess playing community recently with the passing of James Alverson. Below is segment from his biography passed on to the MCA by Jim Davies.

James William Alverson (a.k.a. James W. Doran) died at his home on November 14, 2009 from acute myelogenous leukemia. He was 83. Mr. Alverson was born in Chicago to parents who were vaudeville performers; his father was a singer, his mother an organist. Mr. Alverson graduated from Soldan High School in 1944. He attended Jordan Music Conservatory, and performed in the Muncy Opera chorus for seven seasons. In 1952, he married Gretchen Smalley with whom he remained married for 57 years. He obtained his undergraduate and graduate degrees in History and Education from Washington University. In 1958, Mr. Alverson joined the faculty at John Burroughs School in St. Louis County. He would remain there for his entire career until his final retirement in 1999. Mr. Alverson was not only a history and philosophy teacher, Chair of the History Department, and Director of the Summer School, but he was an inspiration for his students for 41 years. In retirement, he continued to teach philosophy to John Burroughs seniors, volunteered at Life Crisis, and participated in regional chess tournaments.



James "Doran" Alverson

The time has come again for nominations to the MCA Board of Directors. Each year the MCA looks to fill the nine positions, (three for each region of the state, Kansas City and surrounding area, St. Louis and surrounding area, and Rest of State) which are up for election in June. Jim Davies once again is acting as Election Commissioner and will be independently handling the nomination and election process. See the information box on page 26 for full details.

The Missouri Chess Association will have a dues increase that takes effect on July 1 of 2010. The new rate structure will be \$5 for scholastic, \$10 for adults, \$20 for printed bulletin, Family rates will be \$15 Economy, \$25 Printed. With the increase scheduled for July, now is a good time to renew your membership at the cheaper rate and save. Purchasing a multi-year membership at the discounted price is worth considering.

The United States Chess Federation will also be holding a special set of elections this year for its Executive Board. The two seats vacated by the removal of Susan Polgar and Paul Troung will be filled in June. The three candidates who have filed for the two spots are Mike Neitman, Gary Walters, and Sam Sloan. Look for candidates statements in your upcoming Chess Life for more information on the candidates.

Invitational News: The format for the 2010 Missouri Invitational has been announced, and it promises to create another exciting battle for the state title this year. The biggest complaint with the expanded tournament format was the inability of so many players to participate in the Missouri Open. To address this, this year the

event will be split up over two weekends, with the Missouri Chess Festival, including the Missouri Open, the Blitz Championship, the Quick Championship, and a scholastic side event will take place in its traditional time slot during September. Meanwhile, those players who qualify for the Invitational will play in a separate event, the Missouri Closed Championship. An amateur event will be running alongside the invitational so everyone can enjoy chess over the weekend and watch the top players from across the state battle for the elusive State Championship. The Missouri Invitational and Amateur Open is being scheduled in August and the Chess Club and Scholastic Center will host and sponsor the event.

The United States Chess Championship is returning to Missouri this year, as the CCSCSL is once again hosting the prestigious event. The original dates, which you may have seen advertised in a previous Bulletin, as well as other sources has been adjusted. The event was extremely spectator friendly last year, with visitors able to get close enough to the games to evaluate positions on many boards, and with expert GM commentary going on downstairs in the lecture room to confirm your analysis.. Players who will be participating this year will be.

GM Hikaru Nakamura
GM Larry Christensen
GM Ray Robson
IM Anna Zatonsikh

GM Alex Lendermen
GM Sergey Kudrin
GM Alex Yermolinsky
ICC State Champion of Champions

GM Dimitri Gurevich
GM Jessi Krai
Top 10 Rated US Players (Feb)
Four Wildcards

The new dates for the event are: May 13th—May 26th

The US World Team, consisting of GM's Hikaru Nakamura, Alexander Onischuk, Yury Shulman, Varuzhan Akobian, Ray Robson, and Robert Hess just completed an impressive performance in Turkey, claiming second place and the Silver Medals that came with it. The competition involved 10 of the strongest chess countries in the world. GM's Nakamura and Onischuk won individual medals leading the team to a result well above what their rating would have predicted. The trip was generously sponsored by Rex Sinquefeld and the Chess club and Scholastic Center of Saint Louis, and a great deal of coverage from the event can be found on their website, www.saintlouischessclub.com.

In addition, all the players from the Event have may plans to visit the Club for an appearance in the next few months. Be sure to come out and see these stars as they visit Missouri!

Robert Hess: appearing February 6

Alexander Onischuk: appearing February 20

Varuzhan Akobian: appearing March 13

John Donaldson: appearing March 27

Hikaru Nakamura: April 10-11, Playing in the Saint Louis Open

Attention Tournament Directors

The MCA will support your Event!

The Missouri Chess Association will reimburse tournament directors/organizers \$1 per player up to an annual maximum of \$100 when they require MCA membership for Missouri residents in their events.

Free advertising in the Missouri Chess Bulletin and on the popular MCA website is always included!

See www.mochess.org/tdcorner for full details.

US Women's Championship

There was no question that 2008 U.S. Women's Chess Champion Anna Zatonskih was considered one of the favorites to win when she arrived at the 2009 Championship event, but few could have anticipated the stunning performance that ensued.

Zatonskih turned in an amazing 8.5/9.0 score, and her near-perfect performance was only tarnished by a draw to second-place finisher WGM Camilla Baginskaite. Zatonskih took home the top prize of \$15,000 and was also awarded the Goddesschess Fighting Spirit Award (worth another \$500) by GM Susan Polgar. The 2008 Champion's rating coming into the tournament was 2496, but her performance rating in this tournament was a remarkable 2780!



IM Anna Zatonskih receiving her first prize award from Rex Sinquefeld.

Baginskaite played solid chess throughout the tournament and was able to withstand a late charge by IM Irina Krush to hang onto second place and bring home a \$12,000 prize. Her fine performance helped her earn her first IM norm. After a rocky start, Krush finished strong and had an opportunity to pull into a tie for second place on the last day, but she fell just short with a loss to WIM Battsetseg Tsagaan in Round 9. WIM Alisa Melekhina's strong start and stalwart defense throughout the tournament helped her secure a third-place tie with Krush. The two competitors split the combined third- and fourth-place prizes to take home \$7,500 each.

Dutch Defense

US Women's Championship

W: Iryna Zenyuk (2281)

B: Anna Zatonskih (2496)

IM Zatonskih started the tournament with a nice tactical win over Iryna Zenyuk. It would be a sign of things to come. **1.d4 f5 2.c4 e6 3.g3 Nf6 4.Bg2 c6 5.Nh3 d6 6.0-0 Be7 7.b3 0-0 8.Bb2 Qc7 9.Nd2 e5 10.c5 d5 11.dxe5 Ng4 12.Nf3 Nd7 13.Nf4 Nxc5 14.Rc1 Qa5 15.Bc3 15...Qa3 16.h3 Nh6 17.Nd4 Ne4 18.Bxe4 fxe4 19.Nc2 Qa6 20.Nb4 Qb5 21.a4 Qb6 22.Nbxd5 cxd5 23.Qxd5+ Nf7 24.Ba5 Qh6 25.Rc7 Qg5 26.h4 (white is now in serious time trouble) 26...Qxe5 27.Qxe5 Nxe5 28.Rxe7 Nc6 29.Rxe4 Nxa5 30.b4 Nc6 31.b5 Bf5 32.Re3 Na5 33.Nd5 Rf7 34.Ne7+ Kf8 35.Nxf5 Rxf5 36.f4 Rc5 37.Re4 Re8 38.Rxe8+ Kxe8 39.e4 0-1**

Queen's Gambit Declined

US Women's Championship

W: Irina Krush (2490)

B: Anna Zatonskih (2496)

The most anticipated game of the tournament was when the strong IM's Zatonskih and Krush met in round three. It didn't disappoint. **1.d4 d5 2.c4 e6 3.Nc3 Be7 4.Nf3 Nf6 5.Bg5 h6 6.Bh4 0-0 7.e3 Ne4 8.Bxe7 Qxe7 9.Rc1 Nxc3 10.Rxc3 c6 11.Qc2 Nd7 12.cxd5 exd5 13.Bd3 Nb6 14.0-0 Be6 15.Rb1 a5 16.Nd2 Nc8 17.Ra3 Nd6 18.Qc5 Qc7 19.Rc3 Rfc8 20.Rbc1 Qd8 21.h3 Bf5 22.Bf1? b5!! 23.Rb3 Nb7 24.Qa3 b4 25.Qa4 c5! 26.dxc5 Nxc5 27.Qb5 Rab8 0-1**

Interesting Facts from the Championship:

- Anna Zatonskih has won three out of the last four Championships. This is the first back-to-back win since 1995-1996, when Anjelina Belakovskaia did it.
- Zatonskih's formidable score of 8.5/9.0 is the highest score since Irina Krush had the same in 1998.
- There were no draws in the final four rounds of the tournament (the last 20 games). More than 77% of the games were decisive finishes.
- Zatonskih and second-place finisher Camilla Baginskaite will represent the United States in the 2010 Women's World Championship in Istanbul, Turkey.
- Zatonskih's title of 2009 U.S. Women's Champion earns her an automatic bid in the U.S. Championship.
- The CCSCSL has come to an agreement with the USCF to host the 2010 U.S. Women's Championship.
- Baginskaite earned her first IM norm during this tournament.
- Four of the 10 competitors were born in the Ukraine. Zero out of 10 of the competitors were born in the United States.

Thanks to Mike Wilmering and the CCSCSL website for information for this article.

Meet your MCA Board of Directors

Thomas Rehmeier President

Thomas Rehmeier is serving on his fourth term on the Board of Directors, the second as its President. Thomas is an experienced TD, directing the Missouri Open and St. Louis Open the past two years. He has also served as President of the Jefferson City and the Missouri S&T Chess Clubs, as well as USCF Delegate for Missouri. Thomas currently attends Missouri S&T in Rolla working on a degree in Aerospace Engineering.

Tony Rich Vice President

Along with his service on the MCA Board, Tony works as the Executive Director of the Chess Club & Scholastic Center of Saint Louis. Tony received the "Organizer of the Year" award from the USCF in 2009 after organizing the US Championships and Women's Championships. He lives in St. Louis with his wife Anna. Tony is a graduate of Missouri S&T in Rolla with a degree in Computer Science.

Bob Howe Secretary

Bob Howe is currently in his third term on the board of directors. He is the editor of the Missouri Chess Bulletin and Secretary for the MCA. Bob is a former chess coach and currently organizes and TD's the Missouri Class Championships and several other events each year. Bob graduated from Mizzou with a degree in education and is currently a small business owner in Pacific.

Matt Angeli Region 1 Director

This is Matt's second term on the MCA board. Matt stepped up as a tournament director in St. Louis during the stretch after longtime TD Al Howlett retired and before the CCSCSL opened. He also worked as a TD for several years with the Gateway Chess League Scholastic tournaments, and as the oldest of nine siblings, enjoys teaching the game to his younger brothers and sisters.

Ed Baur Region 1 Director

Ed Baur is active in many facets of chess in the St. Louis area. Along with his long time service on the MCA board, he also serves on the board of the CCSCSL and the Gateway Chess League. He serves as the tournament coordinator for Gateway Chess and for the State Scholastic Championship. Ed is a retired high school Science teacher, though he continues to coach the Vianney chess team.

Tim Campbell Region 2 Director

Tim Campbell stays very active in the chess community in Columbia and surrounding areas through his Chess Academy. Tim currently coaches at two elementary schools, gives private lessons and runs a Friday night chess club and Saturday scholastic tournaments. This is Tim's third term serving on the MCA Board.

Bob Holliman Region 3 Director

Bob Holliman is serving his second term this time around as an MCA director. He is a past President of the Board, and was one of its founding members. An experienced TD, Chess Coach, and Life Master, he has been involved in every side of chess. Bob has worked in the field of risk management for as long as he can remember, and loves nothing more than good Italian Food and expertly prepared steak.

Ron Luther Region 3 Director

Ron Luther has started or supported several chess clubs in the Kansas City area as a player, TD, and organizer, going all the way back to High School. A USCF Life Master, a Postal Chess Master, and Nine Time Missouri State Champion, Ron has won close to 200 USCF tournaments. Serving his fifth term on the MCA board, Ron stays active in tournament play and as a sought after chess teacher.

John Sutton Region 3 Director

After serving in the Army, John returned home to MO and started teaching and coaching for the Independence Public Schools. Along with Chess, he coaches a variety of sports. In his 2nd term with the MCA, John has been working hard to promote chess as a MSHAA approved activity, to provide more support for chess sponsors. He is the co-founder of the Independence Chess club and has organized many tournaments over the last 16 years.

Featured Game

The 2009 Missouri Open saw two men still standing with perfect scores going into the final round. Selden Trimble, rated 1880 faced an uphill battle as black against Kansas Expert Tim Steiner, rated 2125. With the Missouri Open title on the line, the game was a hard fought affair that saw a steady gathering of spectators as the competitors exchanged blows deep into the time control, until it was one of the last games remaining. When the dust settled, Trimble emerged with the game and the tournament in his hands. Below is his extensive analysis of the game.

Pirc Defense

2009 Missouri Open

W: Tim Steiner (2125)

B: Selden Trimble (1880)

{I had played Tim twice before in other tournaments, losing each time. When we

met in the last round of this tournament, we were the only two who had scored 4 points, so this game was for the championship.} **1. e4 d6 2. d4 Nf6 3. Nc3 g6 4.**

Be3 Bg7 { 4. ... c6 is more commonly played.} **5. Qd2 Ng4!?** {[Diagram right] The idea is not to exchange the knight for the bishop,

although Black would do so if White allowed it.} **6. Bg5 c5!?** {This is the idea. White's d-pawn is attacked.} **7. dxc5 dxc5!?** { Black often plays Qa5 in such positions. But he no longer has a knight attacking White's e-pawn, so this maneuver doesn't seem so good.} **8.**



Qxd8+ Kxd8 9. f3 { [Diagram below] I don't like this move. After the game,



Tim told me that he wanted to chase my knight from its attack on f2 so that he could castle queenside. But after 9. Rd1+ Bd7 10. Nd5, Black's position is a bit awkward.} **Bxc3+!** {Black is not afraid to give up his fianchettoed

bishop. It's not needed to protect his king, and it now ruins White's queenside pawn structure.} **10. bxc3 f6 11. Bd2** {11. Bf4 Ne5 12. Bxe5 fxe5 13. Bc4 seems bet-

ter to me. Black's center pawns would be broken up. And, as the game shows, Black's knight is going to be a better piece than White's dark-squared bishop.} **11..Ne5** {White has the two bishops, but White's queenside pawns are messed up.} **12. f4 Nf7 13. O-O-O b6 14. Bc4** {Hitting on Black's weak light squares.} **14..Nd6 15. Bd5 Bb7 16. Bxb7 Nxb7** {This knight has moved 6 times in Black's first 16 moves.} **17. h4 Kc7** {Black is at least as good as White.} **18. Nf3 Nc6 19. Be1 Rad8** {Black wants to swap rooks. He thought that White's queenside pawns could be attacked more easily without rooks on the board.} **20. Bg3 Rxd1+ 21. Rxd1 Rd8 22. f5+** {This gives Black the e5-square and weakens White's e-pawn. But it allows White's bishop more play, and it sets up the possibility of White getting an outside passed pawn. With a bishop for a knight, this might be enough to win for White.} **Kc8 23. Rxd8+ Kxd8 24. fxg6** {White wants that kingside passed pawn. But a drawback of this move is that Black can close the h2-b8 diagonal by playing e5.} **24..hxxg6 25. Bh2** {Worth considering was 25. e5. After 25. ... f4 (25. ... fxe5? just allows White's bishop free reign.), White would have the f4 and g5 squares. Of course, a drawback to 25. e5 would have been putting the e-pawn on a dark square, impeding White's bishop.} **25..Kd7?** { 25. ... e5 closes off White's bishop. For several moves, both players ignore this.} **26. Kd2 Nbd8 27. Kd3 Nf7** {This knight keeps an eye on White's kingside pawns.} **28. Kc4 e5!** {At last! This takes the h2-b8 diagonal away from White's bishop.} **29. a4** {If 29. Kd5?, then 29. ... Nd6 puts White in a mating net.} **29..Nd6+ 30. Kd3 Ke6** {30. ... c4+ 31. Ke3 Nb7, intending Nc5 would have been interesting. White gets Black's c-pawn, but Black gets White's a-pawn plus a passed a-pawn of this own.} **31. Bg1 Kd7** {Black wants to play f5 without worrying about a knight check on g5. But this may have been a needless worry.} **32. Nd2 f5!?** {Black thinks he has winning chances. This move gives white a passed center pawn, but immediately gives White a passed kingside pawn.}

33. Be3? { (Diagram below) This just loses a pawn.}

33..fxe4+ { 33. ... c4+ 34. Ke2 Nxe4 35. Nxe4 fxe4 was also possible.}

34.Ke2 {Played instantly. If 34.

Nxe4??, then 34. ... c4+ costs White a

piece.}

34..Na5 {With the idea of

Nac4 followed by

35. g4 Nac4 36. Nb3

{Threatening to play a5 if Black moves his knight off c4. Also, this allows the bishop to get to c1 to keep Black's knight off b2. But 36. Nxc4 Nxc4 37.

Bc1 was worth thinking about. White's potential passed kingside pawn would make it very hard for Black to do anything on the queenside.}

36..a5

37.Bc1 { 37. Nxc5 bxc5 38. Bxc5 intending 39.

Bxd6 would have been an interesting sacrifice.

Black's pawns would have been very weak. White

might be able to create a passed pawn on each

wing.}

37..Ke7 {Diagram below} **38. Bg5+** { I think

this is a mistake. If

White just sits on his

position, it's hard to

see how Black makes

progress. White al-

ways has the threat of

creating a kingside

passed pawn, which

his bishop can support

while it still guards the

queenside. But White

wants to win. He wants to create that passed pawn,

and not just threaten to create it. The trouble is that

he can't really use the pawn because his bishop can

cover only dark squares.}

38..Ke6 39. Bd8?! {It

wasn't too late to just play 39. Bc1.}

39.. Kd7 40.

Bf6 {Threatening

Black's e5-pawn.}

40..Ne8 {diagram

right} **41. Bh8??**

{This loses the

game. White was

very short of time

and couldn't calcu-

late everything. Af-

ter 41. Bg5! Nb2 42.



Bc1 Nxa4 43. c4!, White may have a position which he can hold. White's kingside pawns will always make it risky for Black to move both his knights and his king to the queenside. But how can Black make progress on the queenside using just two of his three pieces?} **41..Ke6** { Black now threatens a couple of things. First, there's always Nb2 followed by Nxa4. Then he threatens to go to h8 with his king and capture White's bishop. White decides to create a passed pawn, if for no other reason than protecting the bishop. But White can't force the pawn through to queen because he can't guard the light squares. And it's very hard for White to attack Black's e4-pawn. Black always has the possibility of creating his own passed pawn on the queenside. In fact, this is what happens.}

42. h5 gxh5 43. gxh5 Kf5 44. h6 Kg6 45. Nd2

{Diagram right}

45..Ned6! {Black does not need to capture White's h-pawn. He only has to stop it. So Black keeps his attack on the e3-square, preventing White's king from approaching

Black's own passed pawn. At the same time, he continues to protect his pawn on e5.}

46. Bg7 b5!

{ Here comes White's queenside passed pawn.}

47. Nxc4 {This may look like a mistake, but what

can White do? If 47. Bf8, then 47. ... bxa4 48.

Nxc4 Nxc4 49. Bxc5 a3 50. Bxa3 Nxa3, and

White can't stop both the a-pawn and the e-pawn.

Or 47. Bf8 bxa4 48. Bxd6 Nxd2! 49. Kxd2 e3+!,

and either the a-pawn or e-pawn queens. If 47.

axb5, then 47. ... Nxd2 48. Kxd2 a4 and, again,

White can't stop both the a-pawn and the e-pawn.}

47..Nxc4 48. axb5 a4 {White's king can't get back

to Black's a-

pawn. }

49. b6

Nxb6 50.Bxe5

{ 50. Kd2 Nc4+ 51.

Kc1 a3 52. Kb1 e3

still queens a

pawn.}

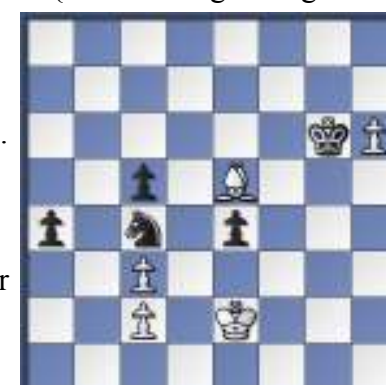
50..Nc4

{There's no way for

White to stop

Black's a-pawn.

White resigns.}



GM Finegold Comes to Town

~ Bob Howe ~

The Chess Club and Scholastic Center of Saint Louis has hired Grandmaster Ben Finegold as its first GM-in-Residence. GM Finegold is currently the 20th highest ranked chess player in the United States. He has played in six U.S. Chess Championships and has twice tied for first in the U.S. Open. GM Finegold's easy going nature provided excellent commentary during the 2009 U.S. Women's Chess Championship held at the Chess Club. This gave Ben a chance to get to know the Club and the Club and staff a chance to get to know him. Both sides clearly liked what they saw and the idea of bringing GM Finegold in full time soon became a reality.



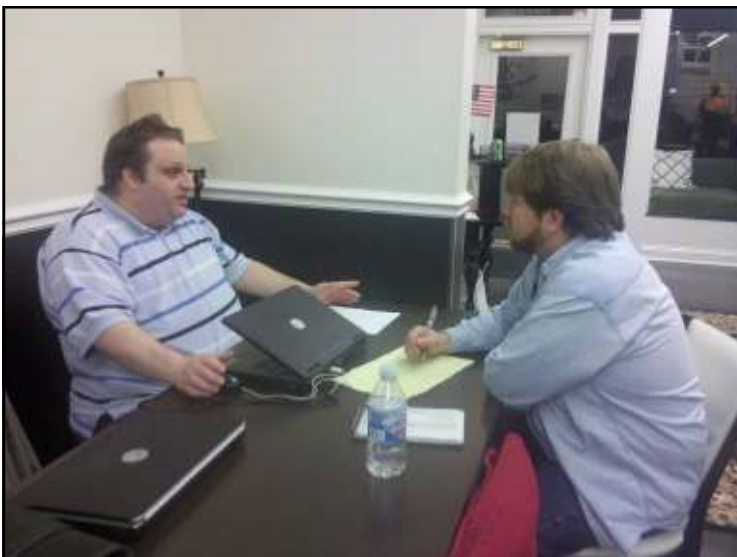
Grandmaster Finegold showed his grasp of high level chess and a quick wit while commentating for the US Women championship.

Few chess clubs are able to afford the luxury of a full time GM in Residence. This opportunity should help not only the club itself, but will help create stronger players across Missouri.

I was able to catch up with Missouri's new top player after he ran off a 4-0 score at the Winter Open to see how he felt about the new job and home.

You have accepted the position of GM-in-residence for the Chess Club and Scholastic Center, what does that job title mean to you?

First and foremost I'll be spending lots of time at the club! I will be there on a daily basis, playing skittles and helping the staff. I have already been doing a lot of work on the website, by blogging with annotated games and reporting on club activities. Another of my primary jobs will be giving private lessons to club members and staff. I will be giving an open lecture on every Thursday evening, and playing in many of the club events. Also I will be helping with the scholastic program and many other activities the club performs.



GM Finegold wasted no time getting his games put into his laptop after the Winter Open tournament to see what the Silicon Monster had to say.

What do you expect to be your activity level in some of the local chess events?

I plan to play in many of the local club events. I will still play in several GM events this year, including the US Championships, but will cut down on traveling to other tournaments. I'm looking forward to playing in the Saint Louis Open with GM Nakamura in April, as well many of the other monthly club tournaments.

Much of the excitement over your arrival was the opportunity to take lessons from a Grandmaster. You're clearly a strong player, but how do you feel about your ability to teach students?

Teaching chess has been a big part of my life over the last 25 years. I've worked with over 150 rated players in that time, many of which I've seen improve 400-500 points.

What is your plan of attack when working with a new student?

First I want to learn about the player. I like them to bring recent games. Any good recent games will do, whether rated or even internet games. This lets me look at their openings, their playing style, and what areas they need to improve on. For all my students I always stress tactics! Almost all games are determined by blunders, so reducing blunders is critical. Your blunders will ruin good play! I also like to push players to study their own games, and play up against stronger opposition.

How do you feel about the move to St. Louis?

I really enjoyed St. Louis when I came for the Women's championship. I liked the Chess Club, Rex, Tony, all the staff really, and the city a great deal. I have been to St. Louis several times over the years and always enjoyed my time here. I've traveled a great deal as a chess player, living in Michigan, Ohio, New York, Europe, and back again, so the idea of moving was not a worry. I've moved 13 times since high school, so I was happy to do so once more for this great opportunity. The decision to move was made easier with my son Spencer coming with me.



Ben apparently isn't just a strong chess player! He hoists the two Irina's at the Women's Championship.



1.f3 e5 2. g4 Qh4#!! And something has gone terribly wrong!
Perhaps openings aren't his strong point????
More likely the new GM in residence shows off his lighthearted sense of humor.



GM Finegold seen here squaring off against a former Michigan student, Seth Homa. Seth is now rated over 2300.

National Youth Action - 2009

~ Tim Nesham ~

In early November 2009 I received an email asking if my son, William, would be interested in playing on the K-9 team at the National Youth Action Chess Tournament representing the Saint Louis Chess Club and Scholastic center. Of course he was very excited to be on the team, and what a team it was! Kevin Cao 2132, Jialin Ding 2086, Isaiah Gadson 1995, William Tong 1817 and William (Will) Nesham 1718. With a 9th grade team like that, everyone associated with the team was certain a trophy or two would be won!

The National Youth Action was held at the Double Tree Hotel in Oakbrook, Illinois on November 20 - 22.

This was a familiar setting as William and I played tournaments there before.

The NYA main event was a 9 round game-30 swiss system tournament with five rounds on Saturday and four rounds on Sunday. Additionally, there was a blitz tournament Saturday night. Will decided not to play in the blitz tournament, but the team did very well finishing in second place behind a strong team from Minnesota.

After two rounds of the main G/30 tournament, all the team members had won their games. The team was off to a great start. In the third round Will played against Sean Vibbert, the eventual 4th place finisher and rated 2112. Many of us were surprised that Will met such a high rated player in the third round. Sean played a Ruy Lopez and Will lost. The team had its first loss, but the bad luck for Will would be balanced by good luck in the last round. Kevin Cao went four rounds before being slowed down by a loss to Gavin Clanahan 1984 in the fifth round. Isaiah Gadson had a similar result with a fifth round loss against Sean Vibbert. William Tong and Jialin Ding had fourth round losses to Joshua Colas 2117 and Andrew Tang 1834, respectively. Will suffered a second loss in the fifth round to Brett Kleist 1468, which disheartened him. He lost on the black side of a Ruy Lopez again.

Despite the losses, the first day ended with the team in first place. It was important to understand that only the top four scores counted toward the team trophy. This and a crispy chicken sandwich from McDonald's took some of the pressure off of Will. I spent the night with Will and Rybka going over his games and showing him where he could have played better. The round four game below had an interesting Queen sacrifice offer, which was correctly turned down as mate follows.

Sicilian Defense - Sveshnikov

National Youth Action

W: Will Nesham (1718)

B: Nicholas Tomlin (1511)

1.e4 c6 2.d4 d5 3.Nc3 dxe4 4.Nxe4 Bf5 5.Ng3 Nf6 6.Nxf5 Qa5+ 7.c3 Qxf5

8.Bd3 Qe6+ 9.Ne2 Nbd7 10.0-0 0-0-0 11.Bf4 Nd5 12.Bg3 f6 13.Qa4 a6

(Diagram Right) **14.Qxa6! Nc7** (..bxa6 15. Bxa6#, with a beautiful mate)

15.Qa5 Ne5 16.Nf4 Qf7 17.dxe5 fxe5

18.Qxe5 e6 19.Rad1 Bd6 20.Qe3 e5 21.Nh3 Nd5 22.Qa7 Bb8

23.Qa5 Bc7 24.Qa8+ Bb8 25.Bxe5 Nc7 26.Bxc7 Qxc7 27.Bf5+ Rd7

28.Bxd7+ Kd8 29.Bxc6+ Kc8 30.Bd7+ Kd8 31.Bg4+ Ke8 32.Qa4+

Kf8 33.Qb4+ Ke8 34.Rfe1+ Kf7 35.Rd7+ Qxd7 36.Bxd7 Bxh2+

37.Kxh2 Re8 38.Bxe8+ Kf6 39.Qf4# 1-0

The second day, Will had three wins and a draw. Going into round eight, Will's chances for a trophy were improving since the first 20 places were eligible for a trophy. By winning his eighth round, Will had moved into seventeenth place. William Tong and Isaiah Gadson had taken their second loss in round seven and eight respectively, so Will wasn't out of the picture to contribute to the team's top four scores. Since Will had been doing so well on the second day I had expected him to meet stiff competition in the last round. I also



Can you find white's surprising move ?

thought Will was due Black, but to my pleasant surprise he had White against a 1031 provisionally rated player. Pleasantly surprised was an understatement! I was thrilled, and cautious at the same time. I wondered if Will's opponent was really someone who's rating had not caught up with his ability. After all, a provisionally rated player is one who has not played many tournaments, and Will's opponent had only four previous tournament games! This is typical of scholastic chess players, many of them have ratings much lower than their rapidly improving skills.

I did the Chess Parent pace and shuffle dance during the last round. Exciting stuff! Kevin and Jialin came out of the last round each with draws. Isaiah and William Tong both won, as well as Will, which moved him up to eleventh place and 1/2 point behind the rest of the Saint Louis team. The final positions out of 116 competitors were:

Kevin Cao, first place!

Jialin Ding, third place.

Isaiah Gadson, seventh place.

William Tong, tenth place

William Nesham eleventh place

The Saint Louis K-9 team took first place! See the huge smiles and trophies in the picture taken by Betsy Dynako. After the pictures were taken I loaded up the trophies in the car and later delivered them to the Saint Louis Chess Club for display, including the K-6 and blitz trophies.

In K-6, Saint Louis took second place,

3 - Zhang, Stephen J 7.0 pt

5 - Hua, Margaret M 7.0

24 - Yin, Michael 6.0

27 - Chen, Justin 6.0

33 - Gadson, Keturah 6.0

In K-3, Saint Louis took ninth place

10 - Zhou, Jason 6.5 pt

61 - Hylan, Torin 5.0

63 - Ding, Jason 4.5

For Full Results, see <http://nya2009.com/>



Margaret Hua, William Tong, Kevin Cao, Jialin Ding, Isaiah Gadson, Will Nesham, Stephen Zhang, Jason Ding

2-on-2 Tournament

~ Mike Wilmering ~

When the Chess Club and Scholastic Center of Saint Louis drafted its tournament schedule at the end of last year, October was slated to have an uninspired quad tournament as the Saturday event for the month. However, as the original date neared, the realization that it was going to conflict with the 2009 U.S. Women's Championship arose. The CCSCSL tournament staff latched onto the opportunity, moving the tournament presented to shake up the format for October. Attempting to build off the success of the Super Team Championships in June, the 2-on-2 team tournament was born. Despite only receiving final approval a month before it was held, and with no time for an official USCF TLA, the event still managed to draw an impressive 38 players! Many of these entrants were made aware of the event only by word of mouth, but that proved to be more than enough to hold a successful event. Despite falling just shy of the 40 player mark, the club was still able to pay out 100% of the advertised prizes.

The biggest shock of the tournament occurred before the first round even started. Having been "bitten by the bug," FIDE Master and 2009 U.S. Championship participant Doug Eckert made the trek to the club to partner up with his friend and local expert, James McLaughlin. Entering the tournament as The Golden Duo, it became evident that this event was going to be a big challenge for the expected partnering of masters Ron Luther and Bob Holliman. Unfortunately for the two Kansas City competitors, Luther was a bit off his game, and it became evident when he relinquished a tough defeat to young William Tong. Because the event was based on total game points and not match points, every win, loss or draw was significant. Eckert and McLaughlin had a tough road, which included the other two top-rated teams. After cruising through rounds



James McLaughlin, and partner Doug Eckert dominated with a combined score of 7.5/8

one and two, they found themselves matched up against John Boyer and Isaiah Gadson. Boyer held his own on board two, drawing the higher rated McLaughlin, but Gadson would not be as lucky against Eckert. After suffering their first nick of the day, Eckert and McLaughlin fought back hard in Round 4 against the resurgent Luther and Holliman. The two found themselves only 1.5 points back, meaning a clean sweep would put them right in the hunt for the top prize. Eckert and McLaughlin would not be denied, however, and a clean sweep in the last round would finish their day with a near perfect 7.5/8.0. For their efforts, each player received \$110, with Eckert being the only player to collect the bonus \$20 prize for a perfect 4.0/4.0 individual score.

Despite the fact that Gadson and Boyer would come up a point short of the top prize, Gadson's last-round victory over Kevin Dale Johnson had major implications in the second prize section. Johnson's loss left his team just shy of the top score in the 3201-3800 section, with two teams scoring 5.0/8.0 total. The team to beat may have been the CCSCSL's Tony Rich and founder Rex Sinquefield. They started red hot with 3.5/4.0 points, but previous commitments forced the two competitors to withdraw after Round 2. This left the section wide open. The first team to take advantage was the Illinois duo of Todd Plagemann and Dennis Humphries. In fact, the game of the tournament may have come in the third

2009 Saint Louis Open — April 10 & 11, 2010

Missouri State Invitational Championship Qualifier

- ♔ **Location:** Chess Club & Scholastic Center of Saint Louis, 4657 Maryland Ave., Saint Louis, Missouri 63108.
- ♔ **Prizes:** \$3700 Guaranteed! \$750 First, \$450 Second, Top U2300: \$350. 2nd U2300: \$150. \$300 1st/\$100 2nd in each A, B, C, D, U1200 b/60 entries.
- ♔ **Entry Fee:** \$60, \$50 for annual members of the club if received by 4/9.
- ♔ **Registration:** 9-9:45.
- ♔ **Rounds:** 5SS,G/120. Saturday-10:00/2:15/6:30; Sun-9/1:15 MCA membership required for MO residents available on site from \$5,
- ♔ **Entries/Info:** 4657 Maryland Ave., Saint Louis, MO 63108, or online at saintlouischessclub.org Info: 314-361-CHESS info@saintlouischessclub.org.

round when Plagemann found himself with a dominating position over Rockhurst's Steven Rand. With both player's clocks on the brink of expiring, the ensuing blitz saw Plagemann find a beautiful checkmate that exploited multiple pinned or misplaced pieces. The crowd that had gathered around this last game of the round erupted with shock and amazement at finding such a checkmate so quickly and in such a high pressure situation, and Plagemann's steady nerves paid off when his last-round victory, along with Humphries', put them in the tie for first. The tandem of Nathan Swinger and Jason Zhou were able to match that record though, with Swinger pulling 3.0 points on board one and Zhou pulling down 2.0 for an equivalent 5.0/8.0 performance. For their efforts, all four competitors split the \$220 prize for \$55 per player. Had Johnson beat his last-round, lower-rated opponent, then his team, which was also comprised of William Nesham, would have entered into a three-way split for the prize. As it was though, Gadson converted the victory and avoided the larger split.

The lower sections of the event were much more decisive. In the 2401-3100 section, the at-the-door team creation of Tim Nesham and Nathan Phan rocked their section with a 5.5/8.0 score, higher than the winners of the next section up! Amazingly, it was the much lower rated Phan who carried the team, turning in a 3.0/4.0 performance. The oddball pairing worked out well, pitting two strong players together, with one of them being highly underrated. Because of this, Phan and Nesham were able to pocket \$110. In the under-2400 section, only three teams showed up. The bottom two teams each received full two-point byes as a result of there being 19 teams (an odd number). When Rich and Sinquefield withdrew, it evened up the field but left the third under-2400 team without the two free points. Regardless, Benji Wolff would not be denied, carrying his team with 2.5/4.0 points. Despite Schatz losing all four games, the other under-2400 teams were unable to notch even a half point, meaning Wolff's 2.5/4.0 was enough to guarantee victory, and the \$220 under-2400 prize, for the two kids.

Overall, the event went very smoothly, and everyone seemed to enjoy themselves. The Super Team Championships and the 2-on-2 Team Championships will both definitely be making a return next year. In fact, Executive Director Tony Rich drew ovations before Round 2 when he announced to the tournament hall that the club would be holding a large \$10,000 prize fund tournament next November. The CCSCSL is in the process of finalizing the tournament schedule for next year, and revamping the club championship cycle and qualification, so be on the lookout for more information soon. As always, we appreciate everyone's continued support of the club, and our tournaments.

Rising Young Stars



Zoe Lemon

Vikram Arun

Ansar Lemon



Most of the focus recently has been on the new St. Louis Chess Club in St. Louis. With all its young strong players, the US Championships, and recent hiring of GM Finegold, this has energized the chess community not only there but throughout the region as well as the country. However there are other Rising Young Stars in other parts of Missouri. Here we turn the spotlight on 3 young players that have made some remarkable rating increases since September 09. Both Ansar and Zoe live in the Kansas City area while Vikram is from Columbia.

Below are some games with light notes against players 400-500 points above them where they showed some of their skill. We look for more not only from these three in the future but as chess grows throughout the state we expect to see many more Rising Young Stars!

Queen's Gambit Declined

Thanksgiving Open

W: Ansar Lemon (1355)

B: Brad Schlosser (1912)

1.d4 d5 2.c4 e6 3.a3 Nf6 4.Bg5 Be7
5.Nc3 0-0 6.e3 c6 7.Nf3 Nbd7 8.Bd3 b6
9.cxd5 exd5 10.0-0 Bb7 11.Ne2 c5
12.Rc1 Rc8 13.Ng3 Re8 14.Nf5 Bf8
15.h3 c4 16.Bc2 c3 17.b4 a5 18.Rb1 axb4 19.axb4 Rc4 20.Ba4 b5
21.Bc2 Rxb4 22.Rxb4 Bxb4 23.Qd3 Qa5 24.Ne5 g6? [24...Ne4!]
25.Nh6+ Kg7 26.Nhxf7 Nxe5 27.Nxe5 Bd6? (diagram right) [27...Ne4]
28.Bxf6+ Kxf6 29.Nxg6 Re4 30.f3 Nice win over the 2009 Missouri
Denker Champion! 1-0



Position after 27..Bd6, white now crashes through for the win.

Scandinavian Defense

Thanksgiving Open

W: Michael Yin (1367)

B: Zoe Lemon (885)

1.e4 d5 2.exd5 Qxd5 3.Nc3 Qa5 4.d4 c6 5.Nf3 Nf6 6.Bc4 Bf5 7.Bd2 e6 8.Nd5 Qd8 9.Nxf6+ Qxf6 10.Bb3 Nd7 11.Qe2 Bd6 12.Bc3 Qe7 13.0-0 0-0 14.Rhe1 Bg4 [14...Rhe8] 15.h3 Bf4+ 16.Bd2? [16.Kb1!] 16...Bxd2+ 17.Rxd2 Bf5 18.c3 Rhe8 19.Bc2 Bxc2 20.Rxc2 Nf6 21.Qd3 c5 22.Rce2 [22.Qc4] 22...cxd4 23.Nxd4 h6 24.Qc2 Rd5 25.Qa4 a6 26.f4 g6 27.g4 h5 28.f5 e5 29.fxg6 fxg6 30.gxh5 gxh5 31.Nf5 [31.Rf2] 31...Qd7 32.Qc4+ Kb8 33.Ne3 Rd4? [33...Rd3!] 34.Qb3? [34.cxd4 Rc8 35.dxe5 Rxc4+ 36.Nxc4+-] 34...Rc8 35.Kb1 Rd2 36.Nc4? [36.Rxd2 Qxd2 37.Qd1] 36...Rxe2 37.Rxe2 (Diagram right) Rxc4 38.Re1 Re4 39.Rd1 Qa4 40.Rd8+ Ka7 41.Rd4 Qxb3 42.axb3 exd4 0-1



Position after 37. Rxe2.
Black to move and win.

Caro Kann

Thanksgiving Open

W: Kevin Cao (2138)

B: Vikram Arun (1625)

1.e4 c6 2.d4 d5 3.e5 Bf5 4.h4 h5 5.Ne2 e6 6.Ng3 Bg6 7.Bg5?! (diagram right) Qb6! 8.b3 c5 9.Be3 Nc6 10.Ne2? [10.c3] 10...Nb4! Hard to believe that Black is close to winning at move 10 with the Caro-Kann! 11.dxc5 Bxc5 12.Bxc5 Qxc5 13.Na3 Qa5 [13...Bxc2] 14.Nc3 Nxc2+ [14...Qxa3 15.Bb5+ Kf8 16.0-0 Qa5-+] 15.Nxc2 Qxc3+ 16.Qd2 Qxc2 17.Bb5+ Kd8 18.Qg5+ Ne7 19.0-0 Qf5 20.Qe3 Nc6 21.f4 Qe4 22.Qg3 a6 [22...Rc8 Develop, develop, develop!] 23.Bxc6 bxc6 24.Rac1 Kd7 25.Qf2 Qb4 [25...Rhb8] 26.a3 Qb5 27.b4 Rab8 28.Rc5 Qb6 29.Rfc1 Rbc8 30.Kh2 Qc7 31.Qe2 Rb5 32.R5c3 Qb7 33.Qe3 a5 34.bxa5 Rxa5 35.Kh1 Qa7 36.Qg3 c5 37.Rb3 Rb8 [37...c4] 38.f5 Rxb3 39.fxe6+ Kxe6 40.Qxb3 Rxa3 41.Qb5 Ra1 42.Qe8+ Kf5 43.Qc8+ Ke4 44.Rxa1 Qxa1+ 45.Kh2 Qxe5+ 46.Kh1 c4 [46...Kd4] 47.Qh3 c3 48.Qf3+ Kd4 49.Qf2+ Qe3 50.Qa2 c2 51.Qa4+ Kd3 52.Qb3+ Ke2 53.Qb5+ Kf2 54.Qb2 Qe1+ 55.Kh2 Qg1+ 0-1



Position after 7. Bg5

Caro Kann

Thanksgiving Open

W: Tim Steiner (2119)

B: Vikram Arun (1803)

1.e4 c6 2.d4 d5 3.e5 Bf5 4.c3 e6 5.Be3 Qb6 6.Qd2 [6.Qc1 This is one of the more recent tries.] 6...c5 7.Nf3 Nc6 8.Be2 cxd4 9.cxd4? (Diagram below) [9.Nxd4 Nxd4 10.Bxd4 Bc5=] 9...Bxb1! Amazing! After only 9 moves in the Caro-kann, Black is clearly winning! 10.0-0 Bb4 [10...Be4] 11.Qd1 Be4 12.Ng5 Bg6 13.h4 h5 [13...h6] 14.a3 Be7 15.b4 Bxg5 [15...Nh6 16.Bxh5 Bxh5 17.Qxh5 g6 18.Qd1 Nf5] 16.hxg5 Nge7 17.Rc1 Nf5 18.Rc5 h4 19.Bb5 0-0 [19...Nxe3 20.fxe3 h3] 20.Qg4 Rac8 21.Rfc1 Nce7 22.Bd7 Rxc5 23.Rxc5 Rd8 24.Ba4 Rc8 25.Rb5 Qa6 26.Qd1? Nxe3! 27.fxe3 Bc2 0-1



Black can win material, and a decisive advantage in this position.

Ron Luther- ronluther@sbcglobal.net

Play through these games, plus thousands more at
www.mochess.org

Thanksgiving Open

~ Mike Wilmering ~

The Thanksgiving Open, held Saturday, Nov. 28 at the Chess Club and Scholastic Center of Saint Louis, was a resounding success. The 59-player field was the largest in club history, and the \$2,000 prize fund drew players from all over the state.

Kansas City delivered a large contingent of players to help fill out the field. A few players even traveled from as far as Indiana to take part in the post-holiday event. The field was broken up into Master/Expert, A, B, C, D and U1200.

Master Ron Luther and Expert Jialin Ding split first place in the Master/Expert class. Each player took home \$125. Despite Jialin's impressive performance, he actually lost a rating point to fall to 2095. Steve Bange (1880) drew Masters Ron Luther (2246) and Bob Holliman (2204). Despite his solid performance during the Thanksgiving Open (two wins and two draws), Bange did not qualify for a prize in Class A. His performance rating during the tournament was 2078.



Nick Karlow's activity has slowed down this year as he took on college, but the Thanksgiving Open showed rust was not a problem.

Nick Karlow won his decisive Round 4 game against Josh Frank to take first place in Class A. Karlow's perfect 4.0/4.0 score earned him \$200 and also secured first place overall in the tournament. His performance will push him back up into the Expert class. The second place prize was split between William Tong and Kansas City resident James Pollitt, who each took home \$25.

A four-way tie atop Class B resulted in \$62.50 for each player. Paul Jordan, Andrew Latham, Troy Krimminger and Vikram Arun all finished with a score of 3.0/4.0.



Alex Esposito, from Kansas City traveled across the state to play in the event. The trip turned out to be productive, as he claimed clear first in C Class.

Alex Esposito (1500) delivered a solid performance as he finished with a score of 3.0/4.0 to take home the \$200 prize outright. His biggest victory came against Class A player Randy Giminez (1800) in a clutch Round 4 performance. Alex Vergilesov secured second place in Class C and Five players tied for second place in Class D as each posted a score of 2.0/4.0. Nathaniel Johnson, Andrew Schatz, Vishal Bharadwaj, William Bunyan and Nathan Phan each earned \$10. Ansar Lemon made the trip from Kansas City to take clear first in Class D with a score of 2.5/4.0. His performance earned him \$200. His sister, nine-year-old Zoe Lemon, took second place in the U1200 division and earned \$50.

In his first tournament ever, Leonardo Severino took first place and \$200 in the U1200 division. His last-round draw against Mike Kummer secured his spot atop the podium.

Support The MCA!

Please check your MCA membership expiration date. If it will expire within a few months, renew today. We hope you appreciate the MCA and its website at www.mochess.org. The printed MCB is sent to current Members for only \$12, and all other Members can view the MCB online at www.mochess.org for only \$5.

White to Move - - Mate in Two



White to Move - - Mate in Three



For solutions. See page 26

MCB Material Submissions:

The MCB is Missouri's Official Chess Publication, for and by the members of the Missouri Chess Association. Your help providing material for the MCB will be much appreciated. All submissions become the property of the MCA and the MCA reserves the right to edit any and all material received for publication.

Please send material for the MCB, including but not limited to:

- annotated games (PGN format is preferred, but others can be used)
- articles written by members
- articles from outside sources, with permission for republication
- pictures
- historical items
- scoresheets
- chess related quotes, sayings, and jokes
- anything you would like to contribute that's appropriate

All contributions that are true, fair, and builds goodwill and better friendships among the membership will be published. Thanks so much to all those who have provided the Bulletin with material.

UPCOMING TOURNAMENTS



February 13 –Metro Saint Louis Class Championship – Saint Louis

3SS, G/120. Chess Club & Scholastic Center of Saint Louis, 4657 Maryland Ave., Saint Louis, MO 63108. Free entries for GMs and IMs, deducted from earnings. GMs and IMs are not counted toward the based on prize fund total. EF: \$35, \$30 for annual members of the club if registered by 2/12. MCA Membership Req'd from \$5. OSA. Prizes:(b/40) \$1,200: \$200 and trophy for 1st in each M/X, A, B, C, D, U1200/UNR. Winner of M/X section qualifies for 2011 Club Championship. Players must compete in their own rating section. Reg: 9-9:45. Rds: 10, 2:15, 6:30. One 1/2 point bye if declared before round 1. Hotel: Water Tower Inn at 314-977-7500 ask for the "chess rate" of \$70/night. Entries: 4657 Maryland Ave., St. Louis, MO 63108. 314-361-CHESS. Additional Info: Tony Rich or visit the CCSCSL Website. info@saintlouischessclub.org

March 19, 20, 21 – Mid-America Open – Saint Louis

5SS, 40/2, SD/1 (2-day option, rds 1-2 G/75). Under 900 is 6 rounds playing March 20-21 only, G/75. Crowne Plaza Hotel St. Louis-Clayton, 7750 Carondelet Ave., St. Louis, MO 63105 (I-64 W/US 40-W Exit 32B, 1.2 miles north on Hanley Rd). \$\$ 20,000 based on 250 paid entries (re-entries count half, U900 Section one-third), minimum \$16,000 (80% of each prize) guaranteed. In 8 sections: Open: \$2000-1000-500-300, clear winner or 1st on tiebreak \$100 bonus, top U2300 \$800-400. FIDE. Under 2200: \$1400-700-400-300. Under 2000: \$1400-700-400-300. Under 1800: \$1400-700-400-300. Under 1600: \$1200-600-300-200. Under 1400: \$1200-600-300-200. Under 1200: \$800-400-200-100. Under 900: \$200-100-60-40. Unrated may enter any section, with prize limits: U900 \$100, U1200 \$200, U1400 \$300, U1600 \$400, U1800 \$500, U2000 \$600. Balance goes to next player(s) in line. EF: 3-day \$108.50, 2-day \$107.50 mailed by 3/9, all \$109 online at chesstour.com by 3/16, \$110 phoned to 406-896-2038 by 3/16 (entry only, no questions), \$120 at site. GMs free, \$90 deducted from prize. Under 1200 EF: All \$20 less. Under 900 EF: all \$70 less. All: No checks at site, credit cards OK.. Re-entry \$60; not available in Open Section. MCA membership (\$5) required for MO residents. 3-day schedule: Reg ends Fri 6 pm, rds Fri 7 pm, Sat 11-6, Sun 9-3:15. 2-day schedule: Reg ends Sat 10 am, Rds Sat 11-2:30-6, Sun 9-3:15. Under 900 schedule: Reg. ends Sat. 10 am, rds Sat 11-2:30-6, Sun 9-12:30-3:15. Byes: OK all, limit 2; Open must commit before rd 2, others before rd 3. HR: \$87-87, 888-303-1746, 314-726-5400, request chess rate, reserve by 3/3 or rate may increase. Car rental: Avis, 800-331-1600, use AWD #D657633, or reserve car online through chesstour.com. Ent: Continental Chess, Box 249, Salisbury Mills, NY 12577. Questions: 845-496-9658. Advance entries posted at chesstour.com.

April 10th-11th—Saint Louis Open

MO Invitational Qualifier 5SS, G/120. Chess Club & Scholastic Center of Saint Louis, 4657 Maryland Ave., Saint Louis, MO 63108. Free entries for GMs and IMs, deducted from prize. EF: \$60, \$50 for annual members of the club if registered by 4/9. MCA Membership Req'd from \$5. OSA. One Section. PF: \$3,700 Unconditionally Guaranteed! 1st Place: \$750. 2nd Place: \$450. Top U2300: \$350. 2nd U2300: \$150. \$300 1st/\$100 2nd in each A, B, C, D, U1200. Top 2 finishers qualify for 2011 Club Championship. Reg: 9-9:45. Rds: 10, 2:15, 6:30. Sunday: 9, 1:15. Two 1/2 point byes available if declared before round 1. Hotel: Chase Park Plaza Hotel at 1-877-587-2427 ask for the "chess rate" of \$159/night. Parkway Hotel at 314-256-7777 ask for the "chess rate" of \$97/night. Water Tower Inn at 314-977-7500 ask for the "chess rate" of \$70/night. Ent: 4657 Maryland Ave., Saint Louis, MO 63108, or online at saintlouischessclub.org Info: 314-361-CHESS info@saintlouischessclub.org.

August 24th Gateway City Quads—Saint Louis

3rd G/90 Round Robin. Location: Chess Club & Scholastic Center, 4657 Maryland Ave., Saint Louis, MO 63108 Entry Fee: \$25.. Prizes: \$70 to winner of each quad. Special \$5 finisher prize. Registration: 9am-9:45am Round Times: 10am, 1:30pm, 4:45pm. Entries/Info: Bob Howe, 311 E. Walnut St. Pacific, MO 63069. or email Bdhowe@yahoo.com (636-234-7928)

May 29 – 2nd Annual Show-Me Classic – Saint Louis

4SS, G/65. Chess Club & Scholastic Center of Saint Louis, 4657 Maryland Ave., Saint Louis, MO 63108. Free entries for GMs and IMs, deducted from earnings. GMs and IMs are not counted toward the based on prize fund total. EF: \$25, \$20 for annual members of the club if registered 5/27. MCA Membership Req'd from \$5. OSA. PF: \$750 (b/40): \$100

1st/\$25 2nd in each M/X, A, B, C, D, U1200/UNR. Winner qualifies for 2011 Club Championship. Reg: 9 - 9:45. Rds: 10, 12:30, 3, 5:30. One 1/2 point bye if declared before round 1. Hotel: Water Tower Inn at 314-977-7500 ask for the "chess rate" of \$70/night. Entries: 4657 Maryland Ave., St. Louis, MO 63108. 314-361-CHESS.

June 12th—Mizzou Quads - Columbia

3RR, G/75. Memorial Union room N208, 518 Hitt St, Columbia. Directions: From I-70 exit 126, south on Providence, east on Rollins, north on Hitt. Entry Fee: \$20 mailed by 3/14, \$25 at site. First prize each quad \$70. Site entries cash only. Reg: 9:30-10:15. Rounds: 10:30-1:15-4:00. Entries/Info: Charles Ward, 2400 Cimarron Drive, Columbia, MO 65203, 573-443-6685 <czar8196@gmail.com>

June 19th— Super Team Championship—St. Louis

4SS, G/65. Chess Club & Scholastic Center of Saint Louis, 4657 Maryland Ave., Saint Louis, MO 63108. Entry Fee: \$75 for 3 person team, \$60 for 3 person team that are all annual members of club if registered by 6/18. MCA Membership Req'd from \$5. OSA. PF: \$1,200 Unconditionally Guaranteed! Championship Team: \$500. 1st Place Team with aggregate rating under 4800: \$400. 1st Place Team with aggregate rating under 3800: \$300. 1st Place team members qualify for 2011 Club Championship. Reg: 9-9:45. Rds: 10, 12:30, 3, 5:30. Ad Hoc teams formed at the door. Hotel: Water Tower Inn at 314-977-7500 ask for the "chess rate" of \$70/night. Ent: 4657 Maryland Ave., Saint Louis, MO 63108, or online at saintlouischessclub.org Info: 314-361-CHESS info@saintlouischessclub.org.

July 17-18—Missouri Class Championships—Columbia

MO Invitational Qualifier 5SS, G/120. (Novice/U1000 section plays Saturday only, 4rd G/60); Best Western Inn, 3100 I-70 Dr SE, Columbia, MO 65201; Prizes: b/7 per class: \$100-1st, \$50-2nd, each: M/X, A, B, C, D, E, Novice (U1000/Unr); Missouri State Championship Plaque to winner of each section! M/X winner receives Invitation to the Missouri Invitational. Players play only those in their own Class. (Small sections may be combined. Combined section use prize pairing in last round) Registration: 8:30-9:30; Round times: Sat-10-2:30-7, Sun-9:30-2. (Novice: Sat-10-12:30-2:30-5) Entry Fee: \$30 if marked by 6/20, \$35 at site. Site entries cash only. Novice section \$10 less. Max 1 half bye; MCA required, O.S.A., available on site from \$5. Hotel Rate: \$69/night, Free breakfast & Free Wi-Fi w/ hotel room 573-474-6161, mention CHESS. Entries/Info: Bob Howe, 311 E. Walnut St. Pacific, MO 63069 (636) 234.7928

July 24—St. Louis Premiere and Amateur

4SS, G/90. Chess Club & Scholastic Center of Saint Louis, 4657 Maryland Ave., Saint Louis, MO 63108. Free entries for GMs and IMs, deducted from earnings. GMs and IMs are not counted toward the based on prize fund total. EF: \$40, \$30 for annual members of the club if registered by 6/22. MCA Membership Req'd from \$5. OSA. Two Sections: Premiere & Amateur(U1600). PF:(b/40) \$1,200: Each Section \$225-\$150-\$100-\$75-\$50 (1st-5th). Winners of Premiere and Amateur Sections qualify for 2011 Club Championship. Reg: 8-8:45. Rds: 9, 12:15, 3:45, 7. One 1/2 point bye if declared before round 1. Hotel: Water Tower Inn at 314-977-7500 ask for the "chess rate" of \$70/night. Ent: 4657 Maryland Ave., Saint Louis, MO 63108, or online at saintlouischessclub.org Info: 314-361-CHESS info@saintlouischessclub.org.

August 28th—Vassily Smyslov Open - Columbia

3SS, G/75. Memorial Union room N208, 518 Hitt St., Columbia, MO. Directions: From I-70 exit 126, south on Providence, east on Rollins, north on Hitt. Entry fee: \$1, NO PRIZES-Just the satisfaction of playing well. Two rating equivalent sections if 18+ players. Reg: 9:30-10:15. Rds: 10:30-1:15-4:00. Entries/Info: Charles Ward, 2400 Cimarron Drive, Columbia, MO 65203, 573-443-6685 <czar8196@gmail.com>

Sept 4-5 Saint Louis Districts—St. Louis— 5rd G/120

Sept 17th-19th Missouri Chess Festival, featuring the Missouri Open - Columbia

October 9th 2-on-2 Team Tournament—St. Louis— 4rd G/75

Oct 30th Trick or Treat Open - Columbia— 3Rd G/75

Nov 26-28 Thanksgiving Open—St. Louis— 6Rd G/120





Membership & Subscriptions

A one-year membership in the Missouri Chess Association includes a subscription to the quarterly *Missouri Chess Bulletin*, available in electronic or hard-copy, as well as eligibility to play in MCA-sponsored tournaments, including State Championship titled events.

MEMBERSHIP OPTIONS	COST (1 Yr)
Regular <i>Ages 25+; Includes hard-copy MCB.</i>	\$12.00
Scholastic <i>Under 25; Includes hard-copy MCB.</i>	\$8.00
Electronic (Economy) <i>Provides online MCB access. **Email address required.</i>	\$5.00
Family <i>2 Adults & children under 25 Provides one hard-copy MCB.</i>	\$18.00
Scholastic Family <i>All children under 25.</i>	\$12.00

If you would like to join the MCA, please fill out a membership form (*available at mochess.org*) and mail it along with dues to the MCA Membership Coordinator:

Nathaniel Fast
630 Broadway
Jefferson City, MO 65101
<nathanielfast@yahoo.com>

Be sure to include your E-mail address to receive tournament announcements and notices when the new issue of the MCB is released.

For more information, please visit <http://www.mochess.org/> and click the Join Us' link.

MCA BOARD OF DIRECTORS & OFFICERS 2009-2010

REGION 1—SAINT LOUIS

Edward C. Baur: 7138 Lindenwood, St. Louis, MO 63109. 314-645-2897.
<ecbaur@gmail.com>

Tony Rich: (Vice President) 6423 Towne Woods Dr. Saint Louis, MO 63129. 314-952-4183
<trich@saintlouischessclub.org>

Matt Angeli 4611 Starview Dr. St. Louis, MO 63128 314-315-0222
<mja.inc@gmail.com>

REGION 2—KANSAS CITY

Bob Holliman: P.O. Box 1871, Independence, MO 64055. 816-836-0568.
<chess_entries@comcast.net>

Ronald Luther: 5205 Country Side Lane, Blue Springs, MO 64015.
816-769-9576. <ronluther@sbcglobal.net>

John Sutton, 3608 Randall Drive, Independence, MO 64055.
816-478-3946. <jsutton@indep.k12.mo.us>

REGION 3—REST OF STATE

Timothy V. Campbell: 6104 E. Sharon Lane, Columbia, MO 65202. 573-696-0082.
<TRJCamp@aol.com>

Bob Howe: (Secretary) 311 E. Walnut, Pacific, MO 63069 636-234-7928.
<bdhowe@yahoo.com>

Thomas R. Rehmeier (President): 5217 Denice Street, Jefferson City, MO 65109. 573-291-0852.
<T.Rehmeier@yahoo.com>



Scholastic Schedule

Saturday Feb 6th, Gateway Action Tournament

Westminster Christian Academy, 10900 Ladue Road, St. Louis, MO 63141 Registration 8am-8:30am, advanced registration at www.gatewaychess.org. Entry Fee \$10, late entrants \$20 6RD G/30. All players play in one section. Prizes based on grade. Additional Information: www.gatewaychess.org

March 13 – March Class Tournament

Parkade Center -- Columbia -- Open to scholastic players up to 12th grade for the 2009-2010 school year. Entry Fee \$5. Registration 9 a.m. - 9:45 a.m. Rounds at 10 a.m., 11:15 a.m. and 12:30 p.m. Awards ceremony at 2 p.m. Rounds and award ceremony schedule may be accelerated as play allows. Players will be grouped in rating classes for competition and awards. Some classes may be merged for pairing purposes.

March 13th, Gateway Class Tournament

Lindbergh High School, 4900 S. Lindbergh, St. Louis MO 63126 Registration 8am-8:30am, advanced registration at www.gatewaychess.org. Entry Fee \$10, late entrants \$20 4rd G/60, Players will be divided into four sections based on rating. 1000 and above, 800-999, 600-799, and Under 600. Additional Information: www.gatewaychess.org

****Missouri State ****

Scholastic Chess Championships!

Saturday February 27th,

Capitol Plaza Hotel, 415 W. McCarty St., Jefferson City, MO 65101 Registration 8:30am- 9:30am , advanced registration at www.gatewaychess.org. Entry Fee \$20, late entrants \$30, High School Division plays 4RD G/60, 8th and below plays 6RD G/30. This is the Official State Championship Event and the largest Chess Tournament in Missouri. Over 500 players expected! Additional Information at www.gatewaychess.org

Good positions don't win games,
good moves do.
(Gerald Abrahams)

NEW EVENT FOR 2010!!

Missouri Junior Championship

June 12-13th

5-SS, G/90, open to all born after 6/12/1989 from any state, Prize Fund: \$5,000 Guaranteed! Entry Fee: \$60 (\$55 if received by 6/12), \$50 (\$45 if received by 5/13) for annual members of CCSCSL. Two Sections: Open. 1st overall: \$2,000 scholarship and \$300, 1st X: \$250 2nd X: \$100, 1st A: \$200 2nd A: \$75, 1st B: \$150 2nd B: \$50. Under 1600: 1st overall: \$500 scholarship and \$300, 1st C: \$250 2nd C: \$100, 1st D: \$200 2nd D: \$75, 1st E: \$150 2nd E: \$75, 1st U1000: \$125 2nd U1000: \$50. Unrated can play in the open section for 1st place prize, or in U1600 for \$50 max prize. Highest scoring female in each section: \$50. Trophies for 1st in each class. Reg: 8:30-9:30. Registration limited to the first 150 entrants! Pre-register to guarantee your spot. Round times: Sat 10-2-6. Sun: 10-2. One half point bye available, must commit before Round 1. Entries: 4657 Maryland Ave., St. Louis, MO 63108. 314-361-CHESS.

Upcoming National Events:

US Junior Chess Congress, February 19-21

Radisson Hotel, Indianapolis, Indiana. 6RD G/30. Sections 12th & Under, 8th & Under, 6th & Under, 3rd & Under. Club Teams welcome. See www.2010ChessCongress.com for details

National Junior High Championship

April 9th—11th

(Open to K-9), Hyatt Regency Hotel, Minneapolis, Minnesota. See www.uschess.org for details soon

National High School Championship

April 16th—18th

(open to K-12), Hyatt Regency, Columbus, Ohio
See www.uschess.org for details soon
The 2010 All Girls National Championship will be running concurrently to this event!

National Elementary Championship

May 7th—9th

(Open to K-6), Hyatt Regency, Atlanta, Georgia
See www.uschess.org for details soon.

CALL FOR NOMINATIONS

As a Missouri Chess Association member, you are invited to submit nominations for the annual election of members for the MCA Board of Directors. Nominees must be residents of the state of Missouri, 16 years or older (as of April 15th) and current MCA members. If elected, nominees would serve a term beginning on September 1, 2010. Self-nominations are welcomed and encouraged. Board Members are expected to be current MCA members, attend board meetings held in Columbia (Currently 4 times per year) and the general membership meeting at the Missouri Open in September 2010. **The deadline for nominations is April 15th, 2010.** Election ballots will be mailed out by June 1 to MCA members in good standing as of May 1, 2010.

Send your nominations to:

Jim Davies, Election Commissioner, 7358 Shaftsbury Ave, Saint Louis, MO 63130 or email them to jandadavies@sbcglobal.net. Nominations must include the nominee's name and region (or mailing address)

White to move - - Mate in Three



Solutions: Pg 18 Mate in two

1. Rxd3+ Rxd3 2. Ne2#

1. Qxh7+ !! Nxh7 2. g7#

1. Qxe6+ Kxe6 2. Bg4#
(if 2. Kc6 b5#)

Solutions: Pg 18 Mate in three

1. Qd8+ Rxd8 2. Re8+ Kxe8
3. Nf6#

1. Qg7+ Bxg7 2. Bxg7+ Kg8
3. Bf6#

1. Qxf8+ Kxf8 2. Rd8+ Be8
3. Rxe8#

Solutions: Pg 26 Mate in three

1. Qf8+ Bg8 2. Qf6+ Bxf6 3.
Bxf6#

1. Nxc5 Bxc5 2. Bb5+ Nxb5
3. Qe6#

1. Qh6 Rg8 2. Rh5! gxh5
3. Qxh7

The Missouri Chess Bulletin Needs Your Games!!

Submit your latest over the board masterpiece (or any other interesting battle) to bdhowe@yahoo.com.

Missouri State Champions



Missouri State Champion
International Master Michael A. Brooks



Denker Champion
Brad Schlosser



Missouri Open Champion
Selden Trimble



Polgar Champion
Margaret Hua



Quick Champion
Kevin Cao

Blitz Champion
Kevin Cao

2009 Class Champions

Master —	Ronald G. Luther
Expert	& Kevin Y. Cao
Class A	Henry Cao
Class B	Steven J. Rand
Class C	Richard Fox
Class D	Alex V. Esposito
Class E	David B. Reitz
Novice	Mark L. Johnson



Bughouse Champion Team
Tony Dutiel &
Elizabeth Oliver

For a complete history of Missouri Champions, visit www.mochess.org & click the Champions Link.

Missouri Chess Hall of Fame



Mr. James H. Davies
Inducted: 2000



Mr. Donald Oswald
Inducted: 2001



Mr. Robert M. Jacobs
Inducted: 2002



F.M. Michael H. Brooks
Inducted: 2003

*Chess, like any creative activity,
can exist only through the combined
efforts of those who have creative
talent, and those who have the
ability to organize their creative
work.*

-Mikhail Botvinnik



Mr. Robert H. Steinmeyer
Inducted: 2006



Mr. John V. Ragan
Inducted: 2008



Mr. William H. Wright
Inducted: 2009

Missouri Chess Association
Bulletin Editor
311 E. Walnut
Pacific, MO 63069

TIME SENSITIVE MATERIAL