



# MISSOURI CHESS BULLETIN

MISSOURI CHESS ASSOCIATION

[WWW.MOCHESS.ORG](http://WWW.MOCHESS.ORG)



Volume 36 Number One—Winter 2009 Issue  
*Serving Missouri Chess Since 1973*



# TABLE OF CONTENTS

Missouri Chess Bulletin

~Volume 36 Number 1 - Winter 2009~

---

<b>President's Podium</b> .....	Pg 3
<b>From the Editor</b> .....	Pg 4
<b>Recent News in Missouri Chess</b> .....	Pg 5
<b>Future Tournaments</b> .....	Pg 6-8
<b>Distinguished Missouri Chess Players</b> .....	Pg 9
<b>US Chess Championship Update</b> .....	Pg 10
<b>Missouri's Youngest Expert</b> .....	Pg 11
~Joseph Garnier	
<b>Nick Karlow Cracks 2000</b> .....	Pg 12-13
~Bob Holliman	
<b>Spotlight on Missouri Chess</b> .....	Pg 14-15
~Steve Goldberg	
<b>Understanding the Vancura Position</b> .....	Pg 16-17
~Selden Trimble	
<b>Thanks for Chess Tournament Report</b> .....	Pg 18-19
~Matt Angeli	
<b>Missouri Chess Association News</b> .....	Pg 20
<b>Regional Chess Clubs</b> .....	Pg 21
<b>Featured Game</b> .....	Pg 22
~Selden Trimble	
<b>Missouri Chess Player Games Collection</b> .....	Pg 23-25
<b>Membership &amp; Subscription Information/Board Contacts</b> .....	Pg 26
<b>State Champions</b> .....	Pg 27
<b>Missouri Chess Hall of Fame</b> .....	Back Cover



The Missouri Chess Bulletin is the official publication of the Missouri Chess Association, a not-for-profit organization which promotes and supports chess in Missouri. The Missouri Chess Bulletin was founded in 1973 and is published quarterly. Unsolicited manuscripts and letters are welcome. All submissions become the property of the MCA and the MCA reserves the right to edit any and all material received for publication. Published opinions are those of contributors and do not necessarily reflect the views of the MCA.

- Missouri Chess Bulletin Layout and Design by Thomas R. Rehmeier -

# President's Podium...

The year 2008 has finally come to a close and proved to be a great year for chess in the state. We saw the world's premier chess facility, The Chess Club and Scholastic Center of Saint Louis, open its doors. Saint Louis was awarded both the U.S. Championship and Women's Championship, and recently, two young scholastic players after years of hard work earned the title of National Expert with the breaking of the 2000 rating barrier. Missouri's chess future looks very bright indeed. I'm pleased to announce that the MCA will be creating a new set of "Player of the Year" awards to recognize players for strong tournament performances and high tournament activity. I hope to have more details available soon. In addition to the normal Missouri Open, we will again be running a full "Chess Festival" in Columbia this fall which will include championship events in quick, blitz, bughouse, and the overall state champion. This will be the first year for implementation of the new qualifying process to play in the Missouri State Invitational Championship. More information is available on page 20 of this bulletin. On a sad note, as many of you are aware, the MCA's long-time treasurer, Mr. Bill Wright has suffered a stroke and has resigned his position due to complications. Bill has been a great friend to many of us and a dedicated servant to Missouri chess for over 20 years; I ask you to join in wishing him a fast and complete recovery. As we begin 2009 the MCA is working hard to improve chess by increasing the number of tournaments held around the state and continuing to provide quality publications and services to its members. A new feature on [www.mochess.org](http://www.mochess.org) is a 'Governance Reports' page that provides information on decisions that the board makes and its plans to make Missouri the greatest chess community around. Any ideas, suggestions, or comments on how to make the organization better are highly encouraged.



*Thank you for your continued support of the MCA,*



Thomas R. Rehmeier  
President  
Missouri Chess Association



## CALL FOR NOMINATIONS

As a Missouri Chess Association member, you are invited to submit nominations for the annual election of members for the MCA Board of Directors. Nominees must be residents of the state of Missouri, 16 years or older (as of April 15th) and current MCA members. If elected, nominees would serve a term beginning on September 1, 2008. Self-nominations are welcomed and encouraged. Board Members are expected to be current MCA members, attend board meetings held in Columbia (Currently 4 times per year) and the general membership meeting at the Missouri Open in September 2009. **The deadline for nominations is May 1, 2009.** Election ballots will be mailed out by June 1 to MCA members in good standing as of May 1, 2009. Send your nominations to  
*Jim Davies, Election Commissioner, 7358 Shaftsbury Ave, Saint Louis, MO 63130*  
or email them to [jandadavies@sbcglobal.net](mailto:jandadavies@sbcglobal.net). Nominations must include the nominee's name and region (or mailing address)

# From The Editor

Greetings Missouri Chess Players. Two Thousand Nine has arrived and the year promises a full slate of great things for Missouri Chess. I'm excited to be heading into my 2nd year as editor of the Missouri Chess Bulletin, and I see many great stories and events coming up on the horizon. I hope you are able to join me at some of the great upcoming events around the state. These include the Continental Chess Association's return to Missouri in March, with the Mid-America Open. Strong attendance last year prompted the CCA to schedule a return trip this year. Last year the event drew nearly 200 participants, and I'm hoping we can top that number this year and continue to improve our reputation as a great place for chess. Then of course the United States Chess Championship and the United States Women's Chess Championship are also on the way to the Show-me state in 2009. There's plenty of information on those events throughout this publication, as well as on our website, [www.mochess.org](http://www.mochess.org), and the Saint Louis Chess Club website at [www.saintlouischess.org](http://www.saintlouischess.org).

As always, Thomas and I can't say thanks enough to those MCA members who have taken the time to contribute to this publication. We have some great articles from regular contributors Steve Goldberg, Bob Holliman, and Joseph Garnier, each who is featuring a different up and coming star in Missouri's chess scene. Matt Angeli has brought a full report on his latest successful tournament, the ThanksforChess event held over Thanksgiving weekend, and I think you will really enjoy a fantastic end-game study compiled by Selden Trimble on the Vancura Position. Plus all the local news, games, tournament listings and information a Missouri player could ever need. I hope you find useful, and enjoy, the Winter 09 edition.

*Bob Howe*  
Editor



Look for these reports and more in the Upcoming Spring Edition of the MCB...

- Full Report on the Continental Chess Association's Mid-America Open held in Clayton this March
- The latest news and final details on the US Chess Championships coming to Saint Louis in May.
- Report on the February 28th Missouri State Scholastic Championships
- Articles, annotated games, and interesting stories from YOU! The members that make up the MCA.

*Deadline for the articles and games for the Spring issue is April 1, 2008.*

*Submissions may be sent to [bdhowe@yahoo.com](mailto:bdhowe@yahoo.com)*

## **Congratulations to these recent Missouri Tournament Winners:**

**St. Louis Swiss IV: James Voelker**

**St. Louis Swiss VI: Dan Roberts**

**Adolf Anderssen Open: Selden Trimble**

**St. Louis Swiss VII: Robert Taras**

**Thank for Chess: U1300 – Nathan Phan  
1300-1700 – Yue Xu  
O/1700 – Ron Luther**

**St. Louis Classic Swiss II: IM Emory Tate  
& Al Howlett**

**Carthage Open: Allen Bishop, Daniel Todd, &  
James Smith**

**St. Louis Swiss VIII: Robert Taras &  
Doug Eckert**

# Recent News in Missouri Chess:



There is no news in Missouri as big as the rapidly approaching United States Championships being held in St. Louis this May. (not to mention the Ladies Championship coming later this year!) The Saint Louis Chess Club and Scholastic Center has announced a new press release on the big event, which a copy of is available on page 10. While the playing venue itself will be kept private during games, big plans are in the works to make it a fantastic event for spectators. The championship's games will be made available on the clubs many plasma screens, with Grandmasters on site giving commentary at all times. Autograph sessions, press conferences, and evening side events are just some of the ideas also being looked at. Keep checking the Club's website at [www.saintlouischessclub.org](http://www.saintlouischessclub.org) for the specifics as they are finalized in the coming months.

It has come to our attention that several Scholastic Tournaments are being run this year, each with the title of State Championship. The Official Scholastic State Championship is the February 28th event being held in Jefferson City. This is the only tournament sanctioned by the Missouri Chess Association, the official state affiliate of the USCF. We welcome players to enjoy any events held around the state, but hope no one is confused by unofficial events calling themselves state title events.

The Missouri Chess Association has announced its latest honoree for the Missouri Chess Hall of Fame, John Ragan. Mr. Ragan's earned the honor with some impressive accomplishments in competitive play, including being a twelve time state champion, more than any other Missourian. While Mr. Ragan's over the board accomplishments are well known, the MCA is seeking more information on his personal and family life. We are hoping someone knows of surviving family members of the great player still in the area whom we could present his award too. If you could help, please let one of the MCA board members know.

"The Chess Journalist" recently reported that former Missouri player Herman Chiu passed away in his home state of Oregon. Mr. Chiu was a USCF Life Member and a strong player who earned his PHD in Journalism at Mizzou in the late 90's. Mr. Chiu was active in local and national tournaments during his time in Missouri, and I'm sure many readers remember him. His last local event was the 2004 St. Louis Open, where he tied for first in a strong field.

Nominations for next year's Missouri Chess Association Board of Director's is now open. If you are interested in serving, or have a candidate you'd like to nominate, be sure to review the information box on page 3 for full details.

The United States Chess Association will also be holding elections this year for its Executive Board. Four of the seven seats on the Board are up for election, meaning over half the board will be filled this June. Incumbents Bill Goichberg and Jim Berry are joined in the field by Mike Atkins, Sam Sloan, Brian Lafferty, Ruth Haring, Eric Hecht, Blas Lugo, Michael Korenman, Brian Mottershead, and Mike Neitman. To learn more, look for statements by these candidates in the April and May editions of Chess Life.





# UPCOMING

**February 7—Metro St. Louis Class Championship—St. Louis** 3SS G/90, Chess Club & Scholastic Center, 4657 Maryland Ave. St. Louis, MO 63108. EF: \$35, \$30 for annual members. MCA Membership Req'd from \$5 Prizes-50% 1st and 30% 2nd of total class entries.—MX,A,B,C,D,U/1200/UNR. Trophies first in each class. Reg: 9:30-10:20, Rds: 10:30, 1:45, 5pm. One 1/2pt bye if declared before rd 1. Info: Tony Rich or [www.saintlouischessclub.org](http://www.saintlouischessclub.org)

**February 28-March 1st Leap your Rating—Overland Park KS** Blue Valley Library Chess Club, 5rd G/45 Reg. 9-9:45 Rounds Saturday 10am, 12:30, 2:30 Sunday 1:15, 3pm EF \$15 pre-reg. \$20 on site. Scholastic Players \$7 pre-reg, \$10 on site. Prizes: \$100 1st, \$70 2nd, \$30 3rd, b/20 Additional Info, contact Brian @ [bvchessclub@yahoo.com](mailto:bvchessclub@yahoo.com)

**March 13-15 or 14-15—Mid-America Open—St. Louis** 100 Grand Prix Points!

5SS, 40/2, SD/1 (2-day option, rds 1-2 G/70), Crowne Plaza Hotel, Clayton. 7750 Carondelet Ave., St. Louis MO 63105 \$\$ 20,000 b/250 pd entries (re-entries count as 1/2, U900 Section 1/4), (80%) guaranteed. 7 sections: Open: \$2000-1000-600-400, clear winner or 1st tiebreak \$100 bonus, top U2300 \$900, U2200 \$800, U2100/Unr \$700. FIDE. U2000: \$1500-700-400-300. U1800: \$1500-700-400-300. U1600: \$1500-700-400-300. U1400: \$1200-600-300-200. U1200: \$1200-600-300-200. U900: \$100-60-40, trophies to top 7. Unrated may enter any section, but with prize limits: EF: 3-day \$103, 2-day \$102 mailed by 3/5, all \$105 online at by 3/10, \$110 phoned to 406-896-2038 by 3/10 (entry only, no questions), \$120 at site. Under 900/Unr Section EF: 3-day \$23, 2-day \$22 if mailed by 3/5, \$25 online by 3/10, \$27 phoned to 406-896-2038 by 3/10, \$30 at site. FREE TO UNRATED IN U900 OR U1200 SECTIONS. Re-entry \$60; not available in Open Section. No checks at site, credit cards OK. MCA membership required for MO residents. 3-day sch: Reg ends Fri 6 pm, rds Fri 7 pm, Sat 11-6, Sun 9-3:15. 2-day schedule: Reg ends Sat 10 am, rds Sat 11-2:30-6, Sun 9-3:15. Byes: OK all; must commit before rd 3, having under 2 pts. HR: \$87-87, 888-303-1746, 314-726-5400, request chess rate, reserve by 2/27. Ent: Continental Chess, Box 249, Salisbury Mills NY 12577. Questions: 845-496-9658. or see [chesstour.com](http://chesstour.com).

**March 21st—Mizzou Quads—Columbia** 3RR, G/75. Memorial Union room N208, 518 Hitt St, Columbia. Directions: From I-70 exit 126, south on Providence, east on Rollins, north on Hitt. Entry Fee: \$20 mailed by 3/14, \$25 at site. First prize each quad \$70. Site entries cash only. Reg: 9:30-10:15. Rounds: 10:30-1:15-4:00. Entries/Info: Charles Ward, 2400 Cimarron Drive, Columbia MO 65203, 573-443-6685, [czar8196@tranquility.net](mailto:czar8196@tranquility.net)

**March 28th March Action Madness—St. Louis** **\*\*three tournaments available!\*\***

**8SS G/5**, Location: Chess Club & Scholastic Center of Saint Louis, 4657 Maryland Ave., St. Louis, MO 63108. EF: \$10. MCA Membership Req'd from \$5. OSA. PF: 40% of entries to overall, 40% to top player of bottom half. Trophy for overall winner Reg: 10:30-10:50. Rds: 11, 11:15, 11:30, 11:45, 12, 12:15, 12:30, 12:45. No 1/2 pt byes.

**6SS G/10**, MCA Req'd, from \$5. OSA. Entry Fee \$10, Frize Fund, 40% to Overall winner, 40% to top of bottom half based on rating. Trophy to overall winner. Reg: 1:30-1:50. Rds: 2, 2:30, 3, 3:30,4, 4:30. No 1/2 pt byes.

**4SS G/30** Two sections (Open and U1600), EF: \$15: MCA Req'd from \$5. OSA. PF: 85% of entries per class to 1st in that class. Trophy to 1st overall open & U1600 sections (Armageddon playoff used in case of tie). Reg: 5:00-5:30. Rds: 5:45, 6:45, 8, 9. No 1/2 pt byes.

Entries: 4657 Maryland Ave., St. Louis, MO 63108 Info: 314-361-CHESS or [info@saintlouischessclub.org](mailto:info@saintlouischessclub.org)

**April 11—Missouri S&T Open I—Rolla** 4SS, G/75. Missouri University of Science and Technology, Havener Center, Meramac/Gasconade Room, 1346 N. Bishop Ave, Rolla, MO 65409. Entry Fee: \$1, NO PRIZES—Just the satisfaction of playing well. Reg: 9:00-9:50. Rounds: 10am-1pm-4pm-6pm. Entries/Info: Thomas Rehmeier, 220 Thomas Jefferson North, Missouri S&T, 202 West 18th St., Rolla, MO 65401, 573-291-0852

**April 25th-26th—St. Louis Open—St. Louis** \*MO Invitational Qualifier\* 5SS,G/120. Location: Chess Club & Scholastic Center of Saint Louis, 4657 Maryland Ave., St. Louis, MO 63108 Prizes: \$300 first place Guaranteed. \$150 each X,A,B,C,D,E,U 1000/Unr. b/60 Entry Fee \$40 received by 4/17. \$50 on site. K-12 may enter at half fee but are eligible for only half of class prize. Reg: 8:30-9:30. Rds Sat: 10 - 2:30 - 7; Sun: 9:30 - 2 MCA membership req'd for MO residents, Adv. Info/Entries: Missouri Chess Association, 7138 Lindenwood, St. Louis, MO 63109 314-645-2897

# TOURNAMENTS



## **May 7th—17th United States Championships!**

The Chess Club and Scholastic Center of St. Louis will be hosting the United States Chess Championships. A premiere group of GM's and dignitaries are expected. Visit [www.saintlouischessclub.org](http://www.saintlouischessclub.org) for the latest details.

## **Mary 23rd-24th Show-Me Classic—St. Louis 6 Grand Prix Points!**

5SS, G/90, two sections - Open & U1600. Chess Club & Scholastic Center, 4657 Maryland Ave. St. Louis MO 63108. EF: \$50, \$40 for annual members. MCA Membership Req'd. Prizes: Guaranteed 1st, b/40 2nd-5th. Each section \$300-200-150-100-50. Reg: 10-10:50, Rounds: Sat 11, 2:15, 5:30, Sun 12, 3:15. One 1/2 pt bye if declared before round one. Entries/Info: 4657 Maryland Ave., St. Louis, MO 63108, 314-361-CHESS, [info@saintlouischessclub.org](mailto:info@saintlouischessclub.org).

**June 13th—Emmanuel Lasker Open—Columbia** 3SS, G/75. Memorial Union room N208, 518 Hitt St., Columbia, MO. Directions: From I-70 exit 126, south on Providence, east on Rollins, north on Hitt. Entry fee: \$1, NO PRIZES-Just the satisfaction of playing well. Reg: 9:30-10:15. Rds: 10:30-1:15-4:00. Entries/Info: Charles Ward, 2400 Cimarron Drive, Columbia, MO 65203, 573-443-6685 <[czar8196@tranquility.net](mailto:czar8196@tranquility.net)>

**June 20th—CCSCSL Super Team Championship** 4SS, G/60, Chess Club & Scholastic Center, 4657 Maryland Ave., St. Louis, MO 63108. EF: \$75 for 3 person team, \$60 for 3 person team that are all annual members. MCA Membership Req'd. Prize Fund (b/15 teams): \$900: Championship Team: \$500. 1st place team with aggregate rating below 4800, \$400. Trophy to top teams in each section. Unrated players considered 1100. No alternates. Reg: 9:30-10:20. Rds: 10:30, 12:45, 3:00, 5:00. No 1/2 pt byes. Info: 314-361-CHESS, [info@saintlouischessclub.org](mailto:info@saintlouischessclub.org).

## **June 28th-29th Missouri Class Championships**

**\*MO Invitational Qualifier\*** 5SS, G/120; Columbia Inn, 3100 I-70 Dr SE, Columbia, MO; \$\$b/7 per class: \$100-1st, \$50-2nd, each. Missouri State Championship Plaque to winner of each section: M/X, A, B, C, D, E, U1000/Unr; Players play only those in their own Class. (small sections may be combined) M/X winner receives Invitation to the Missouri Invitational. Reg: 8:30-9:30; Rounds: Sat-10-2:30-7, Sun-9:30-2. EF: \$30 if marked by 6/20, \$35 at site. Site entries cash only. Max 1 half bye; MCA required, O.S.A., available on site from \$5. Hotel: \$69 night, Free Wi-Fi & free breakfast w/ hotel room 573-474-6161, mention CHESS. Entries/Info: Bob Howe, 4403 Gage Pl. Columbia, MO 65203 (636) 234.7928

**July 18th St. Louis Premiere & Amateur**, Two sections, Premiere & Amateur (U 1600) 5SS G/60, Chess Club & Scholastic Center, 4657 Maryland Ave., St. Louis, MO 63108. Entry Fee: \$40, \$30 for annual members. MCA Membership req'd, from \$5. Prizes: (b/40) each section: \$225-150-100-75-50 (1st-5th), Registration: 9-9:50, Rds: 10, 12:15, 2:30, 4:30, 7. One 1/2pt bye if declared before rd 1. Info: 314-361-CHESS, [info@saintlouischessclub.org](mailto:info@saintlouischessclub.org).

**August 8th—Dog Days Open—St. Louis** 4SS G/60

**August 15th, Columbia Open:** 4SS G/75 Columbia

**August 29th, Jose Capablanca Open:** 3SS G/75 Columbia

**September 5th-6th St. Louis District Championship:** 5SS G/120 Grand Prix Event—St. Louis

**\*\*September 25th-27th Missouri Chess Festival\*\*:** Columbia

Events Include: *The Missouri Open*, A heritage event!, *The State Championship Invitational*, *Missouri Quick Championship*, *Missouri Bughouse Championship*, *Missouri Blitz Championship* & *Saturday Scholastic Tournament*

**October 10th, Fall Quads—St. Louis** 3RR G/90

**Alexander Alekhine Open:** 3SS G/75 Columbia

**November 28th, Thanksgiving Open—St. Louis:** 4SS G/75

**December 26th, Christmas Open—St. Louis:** 4SS G/75

# Scholastic Schedule

This spring has some big events in store for Scholastic Chess. Coming up on **February 28th** is the **Official State Championship event in Jefferson City**. This tournament is the largest chess event of any kind in Missouri, with an expected attendance of 600-700 players! Another exciting event on the horizon is **Supernationals**, hosted by the USCF. This event, held once every four years, features all three of the Spring National events in one location for one grand event. **The Supernationals** will be in Nashville Tennessee this year, from **April 3-5**. We're fortunate such a big event is held in a neighboring state, making it a more affordable trip than many of the possible locations. Below are details of these great chess opportunities, along with other local events.

## **Missouri State Scholastic Championships, February 28th, Jefferson City**

**\*\*This is the officially sanctioned State Championship tournament!!!\*\***

Location: Capital Plaza Hotel, 415 West McCarty, Jefferson City, MO 65101. Registration: 8:30-9:30am. Entry Fee: \$20, \$30 if registered after 9:30. High School Division: Four round G/60, Round Times: 10:30, 1pm, 3:30, 6pm, Schools may enter any number of four players teams and a partial team. Best player on each team assigned to board one, 2nd best to board two, etc..

9th & Under, 8th & Under, 6th & Under, 5th & Under, and 3rd & Under Divisions: Six rounds G/30. Round Times: 10:30, 12, 1:30, 3pm, 4:30, 6pm. Schools may enter any number of players, school score is sum of 4 highest player scores. Trophies to top eight individuals and schools in Each Section. USCF ratings used for pairings but membership is NOT required for this event. Additional Info: See [www.gatewaychess.org](http://www.gatewaychess.org) or call Ed Baur at 314-645-2897

**\*\*Winner of each section is the Official Missouri State Champion!\*\***

## **Super Nationals IV, April 3-5, 2009 Nashville, Tennessee**

This is the only Spring National event in 2009. All grades and sections are played at the same location. Gaylord Opryland Resort and Convention Center, (615) 883-2211. Tournament details at [www.uschess.org](http://www.uschess.org) Click on "Clubs & Tourneys", then "Upcoming Tourneys", then "National Events" for full details.

## **February 7th—Gateway Action Tournament .. St. Louis**

Location: Westminster Christian Academy, 10900 Ladue, St. Louis, MO 63141. Registration: 8-8:30am, Six Round G/30, Entry Fee: \$10, \$20 after 8:30am. Trophies to top individuals and teams in each division. HS, 9th & under, 8th & under, 6th & under, 5th & under. USCF membership req'd. Additional Info: See [www.gatewaychess.org](http://www.gatewaychess.org) or call Ed Baur at 314-645-2897

## **March 21st—Bollinger Memorial Tournament—St. Louis**

Location: Wydown Middle School, 6500 Wydown, St. Louis MO 63105. Registration: 8am-8:30am. Entry: \$10, \$20 if registered after 8:30. High School Division: Four Round G/45, Rd Times: 9:30, 11:30, 1:30, 3:30. 9th & Under, 8th & Under, 6th & Under, 5th & Under, and 3rd & Under Divisions: Five Rd G/30, Rd Times: 9:30, 11:00, 12:30, 2:00, 3:30. USCF Membership Required. Additional Info: See [www.gatewaychess.org](http://www.gatewaychess.org) or call Ed Baur at 314-645-2897

## **July 10-12—US Junior Open—Milwaukee, Wisconsin**

Three sections based on age: Under 21, Under 15, Under 11. 5SS, G/90. Milwaukee, Wisconsin. Winner of the Under 21 section earns entry into the US Junior Closed Championship. Full Tournament details at [www.uschess.org](http://www.uschess.org), Click on "Clubs & Tourneys", then "Upcoming Tourneys", then "National Events"



## MISSOURI'S TOP PLAYERS

1	IM Michael A Brooks	2423
2	Charles Lawton	2358
3	Bart F Gibbons	2256
4	Kenneth E Jones	2232
5	Loal W Davis	2227
6	Thomas G Gossell	2213
7	Richard Benjamin	2200
8	Ronald G Luther	2211
9	Andrew J Witte	2158
10	Tomislav Juricic	2144
11	James R Voelker	2134
12	James F McLaughlin	2132
13	Bob Holliman	2118
14	Robert Merton Jacobs	2100
15	Kenneth P Thomas	2098
16	Richard Wagner	2060
17	Waldo Odak	2050
18	Jeremy M Volkman	2022
19	James A Davies	2020
20	Pranav Akolkar	2010
21	Kevin Y Cao	2007
22	Nick W Karlow	2004
23	Kevin Dale Johnson	2000
24	Paul W Cornelison	2000
25	Daniel R Huff	1994
26	Benjamin M Gradsky	1985
27	Jeffery Van Order	1956
28	Nathaniel Fast	1953
29	Dan Roberts	1943
30	Joshua Frank	1936
31	Dwight Beasley	1922
32	Karl Cosner	1918
33	Selden Trimble	1916
34	Nathan Swinger	1898
35	Darius Masuhud	1917
36	Daniel A Juengel	1902
37	Adil Skuka	1900
38	Brad Schlosser	1855
39	Renzo Herrera	1892
40	Albert Howlett	1838
41	Frank Smith	1886
42	Tim Blaco	1886
45	Joseph Anton Garnier	1875
44	Kenneth E Fee, Jr	1880
45	Edil Karabiev	1878
46	Steven Bange	1866
47	John R. Boyer	1865
48	Daniel Coryea	1864
49	Tony Dutiel	1858
50	Robert Taras	1846
51	Mark Cogley	1840
52	Jialin Ding	1832
53	John Quimby	1830
54	Henry Cao	1819
55	Matthew Barrett	1808
56	Behrooz Vakil	1802
57	Stephen Landrum	1800
58	Alex Marler	1789
59	Jonathan Shure	1787
60	Tony Rich	1786
61	Tom Epplin-Zapf	1780
62	Wade Stallman	1785
63	Timothy Nesham	1767
64	Edward Irish	1763
65	Jim Poage	1759

## MO PLAYERS ON USCF TOP 100 LISTS

<b>Overall</b>	IM Michael Brooks (2423)	93rd
<b>Postal</b>	Robert Jacobs (2395)	18th
	Laurence Anderson (2310)	40th
	Harry Ingersol (2253)	61st
	Barry Walker (2192)	97th
<b>Over 65</b>	Robert Jacobs (2100)	49th
<b>Under 21</b>	Thomas Gossell (2213)	65th
<b>Age 18</b>	Nick W. Karlow (1981)	47th
	Frank H. Smith (1886)	71st
<b>Age 17</b>	Kevin Guo (2001)	38th
<b>Age 16</b>	Brad Schlosser (1841)	63rd
<b>Age 15</b>	Henry Cao (1822)	78th
<b>Age 13</b>	Isaiah Gadson (1677)	91st
<b>Age 12</b>	Vikram A Arun (1692)	80th
<b>Age 11</b>	Kevin Y. Cao (2007)	9th
	Jialin Ding (1768)	36th
	William Tong (1678)	46th
<b>Age 10</b>	Margaret M.Hua (1565)	44th
<b>Girls Under 13</b>	Margaret M. Hua (1565)	25th
	Joanna Gossell (1312)	55th

66	Thomas R. Rehmeier	1747
67	Isaiah Gadson	1747
68	Chris Hunt	1743
69	Scott Olsen	1738
70	Brian Gahagan	1736
71	Allen Bishop	1733
72	Jose Clarin	1729
73	William Starnes	1727
74	Brian Jerauld	1725
75	Bradley Herbst	1723
76	Gunthar Kellotat	1700
77	William Thompson	1692
78	Jacob Wilkins	1690
79	Spencer Conklin	1686
80	Shan Siddiqi	1682
81	William Tong	1679
82	Justin G. M. Hull	1677
83	Steven Rand	1676
84	Linu John Alex	1675
85	Tyler Severance	1673
86	Edward Hollander	1672
87	Joseph Conklin	1669
88	Roger Pagel	1669
89	Robert Talbot	1651
90	Bob Howe	1642
91	Ricky Nunn	1636
92	Vikram A Arun	1632
93	Rickard Pope	1632
94	Cody Ruggles	1629
95	Donald Hutto	1628
96	Matthew Angeli	1626
97	Daniel Todd	1626
98	Tim Boyd	1623
99	Mike Clark	1623
100	Michael Kummer	1614

USCF December 08-Active in Past 12 Months

# NATION'S BEST PLAYERS TO COMPETE IN MAY AT 2009 U.S. CHESS CHAMPIONSHIP IN ST. LOUIS

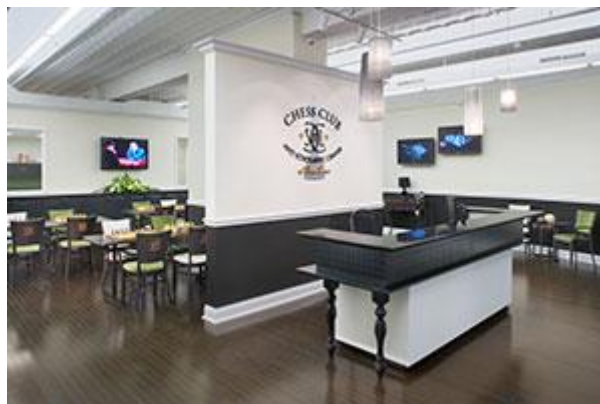
*Two dozen contestants will vie for \$130,000 in prizes at new venue*

ST. LOUIS, January 27, 2009 -- Two dozen of the nation's best chess players will be invited to participate in the 2009 U.S. Chess Championship, which will be held at the new Chess Club and Scholastic Center of Saint Louis. The tournament, which dates back to 1845, will take place from May 7 through 17, 2009 and will offer a purse of more than \$130,000 in prize money.

The Chess Club and Scholastic Center of Saint Louis, which Steve Goldberg of United States Chess Federation (USCF) Online calls "certainly one of the most impressive chess centers" in the country, opened in July 2008. Founded by retired investment fund manager Rex Sinquefeld, it already has nearly 500 members, surpassing its original goal of 300 for its first year of operation by 67 percent.

The 24 invited players will include:

- the top 12 American players by rating, using the April rating supplement;
- the top two female players by rating, using the April rating supplement;
- the 2008 U.S. Junior Closed Champion;
- the 2008 U.S. Open Champion;
- the 2009 U.S. State Champion of Champions;
- a total of seven wild card spots, to be determined later.



The winner will receive \$35,000, with additional cash prizes awarded to all participants, including \$2,000 to the last-place entrant. Cash prizes will be divided equally among tied competitors. Additionally, top youths from throughout America will be invited to compete. Spectators will be welcome at the event.

The championship will be a 9-round event, using the Swiss system with one round per day and a rest day between rounds 5 and 6. Time controls will be the classical 40 moves in two hours, with one hour allowed for all remaining moves. Guest commentary will be provided by two world-class Grand Masters throughout the event.

"We are delighted to host the prestigious U.S. Chess Championship in our first full year of operation," said Tony Rich, executive director of the Chess Club and Scholastic Center of Saint Louis. "It is exciting and gratifying for us to bring together the nation's best players at our first-class facility."

The Chess Club and Scholastic Center of Saint Louis is a not-for-profit, 501(c)3 organization. The club, which has welcomed nearly 500 members since its July 2008 opening, offers free classes for beginners, discounted tournament entry fees and discounted merchandise for club members. For more information, please visit [www.saintlouischessclub.org](http://www.saintlouischessclub.org) or call 314-361-CHESS.

The United States Chess Federation is the official, not-for-profit U.S. membership organization for chess players and chess supporters of all ages and strengths, from beginners to grand masters. Founded in 1939 with the merger of the American Chess Federation and the National Chess Federation, USCF has grown to more than 80,000 members and nearly 1,200 affiliated chess clubs and organizations. USCF sanctions 25 national championships award titles to both amateurs and professionals, ranging from elementary school students to senior citizens. For more information, visit [www.uschess.org](http://www.uschess.org).

# MISSOURI'S YOUNGEST EXPERT

~Joseph A. Garnier~  
*JosephGarnier@gmail.com*

It's a cold Tuesday Evening at the St. Louis Chess Club and Scholastic Center. The hands on the clock read 6:55PM as the night's attendance warms up for the weekly blitz tournament. Joseph Garnier "The King of speed" plays a game against Tony Rich while the "Bosnian Bomber" Tomislav Juricic trades games with Joshua Frank. Just when all is calm, we hear the front door slowly open and usher in a terror comparable to the Nazi invasion of Poland. Although barely five feet tall, twelve year old Kevin Cao strikes fear in the hearts of all chess players in the St. Louis area. As he walks across the tournament hall, the room falls quiet. His classical approach to the game is akin to that of a young Paul Morphy and his raw speed is enough to scare even the most seasoned veterans. Everyone in the room trembles and with good reason! Kevin has stolen points for almost everyone in the St. Louis area pushing his rating over the highly coveted 2000 level. His introduction into the expert category is not a surprising one and I'm happy to have donated a few points to this talented young man. Having personally watched his journey upward, I can proudly say that Kevin has gone from a little boy who pushed pieces, to a young man who has set the precedence for scholastic chess in the St. Louis area. When my students ask "Are you better than Kevin Cao?" I can happily respond by saying "Not anymore."



Kevin keeps a busy schedule outside of the chess world as well. He currently plays point guard for his middle school team, along with playing soccer, indoor soccer, and is even learning the violin. Even with all those other time commitments, Kevin has consistently improved his chess each year. It may not be long before someone is writing another article, about Kevin Cao, Missouri's youngest Master.

### Here's are some of Kevin's impressive chess achievements:

- 2005-2008 Missouri State Elementary K-5 Champion (4 in a row!)
- 2006 USA 4th Grade National Champion
- 2006 USA K-6 Blitz National Champion
- 2006 Missouri State Blitz Champion
- 2007 Defeated First National Master at age 10
- 2007 USA K-6 Youth Action National Champion
- 2007 Missouri State A Class Champion
- 2008 Midwest Class Championship 1st, A Class
- 2008 Missouri State Quick Champion
- 2008 Became USCF Expert at age 11



Kevin found the winning tactic in this position. Can you? Black to move and win.

Kevin clinched the expert title with his victory at the Midwest Class Championship. Here's the game that allowed him to cross the coveted 2000 barrier:



<b>Ruy Lopez</b> Midwest Class Championship W: Zach Kasiurak (1983) B: Kevin Cao (1968)	1.e4 e5 2.Nf3 Nc6 3.Bb5 Bc5 4.0-0 d6 5.c3 Bd7 6.d4 exd4 7.cxd4 Bb6 8.Nc3 Nge7 9.Be3 0-0 10.h3 Ng6 11.Re1 Nh4 12.Ng5 h6 13.Qh5 Bxd4 14.Nxf7 Rxf7 15.Bc4 Be8 16.Bxd4 Nxd4 17.e5 dxe5 18.Rxe5 Qf6 19.Rxe8+ Rxe8 20.Bxf7+ Qxf7 21.Qxh4 Nf5 22.Qa4 a6 23.Rd1 Nd6 24.Qd4 Kh8 25.Qd5 Qf4 26.Qd4 Re1+ 0-1
--	---

Expert at 11, Master at ???

\*\*Thanks to Wenming Cao for providing additional information and pictures for this article. You can read the latest news on Kevin's quest to become a Master on his website, [www.kevinchess.com](http://www.kevinchess.com). \*\*



# Nick Karlow Breaks 2000

~Bob Holliman~  
*Life Master*

When asked to write a human interest story about Nick Karlow my challenge was to find a concise way to describe Nick, and I found it in Proverbs 22, verse 29: Seest thou a man diligent in his business? He shall stand before kings; he shall not stand before mean men.

On November 29<sup>th</sup>, 2008 Nick Karlow passed a barrier few will ever cross becoming Missouri's newest USCF expert. According to a statistical distribution, Nick has reached the top 5% of rated chess players, but that is only part of the story. Nick is not only a student – athlete and chess player, he is also the first known proof of perpetual motion. When Nick shows up at a buffet the manager will cringe as the empty plates pile up and the profits disappear to keep fueling Nick's forward momentum.



*Missouri's newest expert pondering an unusual chess imbalance.*

On track to graduate as Valedictorian of the Valley Park High School Class of 2009, this National Honor Society member and guitar picking blues player tackles an academic challenge just as easily as he scores chess points and soccer goals. Nick's A.P. class load looks like a low hurdle as he maintains a 4.6 GPA on a 4.0 scale. As a Co-Captain of the Valley Park Hawks soccer team, Nick led on the field for the year as the team's highest scorer, garnering 11 goals, 9 assists and one game winning goal. While Nick admits to being a "ball hog" he also played dual rolls as striker (forward) and midfielder while simultaneously directing the Hawk's offense and defense so that everyone could achieve. You won't find Nick on the soccer field now that the season has ended, instead you will find him running the streets and roads of Southwest St Louis County for 10-12 miles any given day just for the fun of it; rain, snow or ice does not stop him. Once his daily "run for the fun of it" is over Nick can be found as an active member of his Krew youth group or involved in a game of football, ultimate Frisbee or just about anything that will put him in motion. One thing you can easily learn about Missouri's 2007 Scholastic Champion, 2006 National K-12 U1500 Champion ( 7-0!) and 2006 Missouri 9<sup>th</sup> grade champ is that he is focused be it calculus, physics or chess Nick is truly diligent about his business and sets an example others can follow.

As one can imagine by the time you get "home" for the night there remains "homework", that wonderful forced academia which is known to keep him up till 1 or 2 in the morning and on some occasions all night. When trapped in a car or on a plane where he has to sit somewhat still you will find Nick with a book in hand.



*Nick after posting an astounding 7-0 score at the 2006 National High School Championship.*

It appears he enjoys reading but he can also defy gravity! Had I not seen this myself I could not describe it. Most people can sleep in a seat while riding (I can sleep while driving but its an acquired ability so don't try it on your own), lay down or lean your head against the window or whatever: Nick is the first person I've ever seen sleep on the seat back. Truly this was a gravity defying act – one leg over the top, head somewhere in the middle, kind of like how you sleep at night only turned 90 degrees. Since he had his own pillow along it served as an indication this is a common occurrence. Along with his pursuit of the National Master title, Nick has a strong interest in both math and physics. Enrolled in the Wash U class of 2013 he will begin the trek toward a Ph.D in one or both subjects with the goal of becoming a research professor at a prestigious university.



Here's a nice win by Nick in a recent tournament at the Chess Club and Scholastic Center of St. Louis.

**1.d4 d5 2.Nf3 Nf6 3.g3 c6 4.Bg2 Bf5 5.0-0 Qc8 6.Re1 Bh3 7.Bh1 Nbd7** Here the only games in my database continue with h5 and black obtains a 60% win record. Following are two examples one win by white one by black. [7...h5 8.Nc3 h4 9.e4 hxg3 10.fxg3 dxe4 11.Nxe4 Nxe4 12.Rxe4 Nd7 13.Bg5 Nf6 14.Bxf6 (14.Re2 e6 15.Qd2 Bd6 16.Ne5 Qc7 17.c4 c5 18.Qf4 cxd4 19.Bxf6 gxf6 20.Qxf6 Rg8 21.Rae1 Rd8 22.Bf3 Qe7 23.Qh6 d3 24.Qh7 dxe2 25.Qxg8+ Qf8 26.Qg5 Bc5+ 27.Kh1 Rd1 28.Rxd1 exd1Q+ 29.Bxd1 Qd6 30.Ba4+ b5 31.Bxb5+ Kf8 32.Nd7+ Ke8 33.Nf6+ 1-0 Meyer,F-Siebrecht,S/Gausdal 2003/EXT 2004) 14...gxf6 15.d5 e5 16.dxe6 Bc5+ 17.Nd4 fxe6 18.Bf3 Qd7 19.Bh5+ Kf8 20.Kh1 e5 21.Nb3 Qxd1+ 22.Rxd1 Bb6 23.Bg4 Kf7 24.Bxh3 Rxh3 25.c4 Rah8 26.Re2 Kg6 27.c5 Bc7 28.Rd7 R8h7 29.Rxh7 Rxh7 30.Rd2 f5 31.Kg2 e4 32.h3 Kf6 33.Re2 Ke5 34.Nd2 Kd4 35.Nb3+ Kd5 36.Rd2+ Ke5 37.Re2 Rg7 38.Kf2 Ke6 39.Re3 Be5 40.Kg2 Bxb2 41.Re2 Bc3 42.Re3 Bb4 43.Re2 a5 44.a4 f4 45.Rb2 Rxg3+ 46.Kh2 Rc3 47.Nd2 Ke5 48.Nb3 e3 0-1 Davis,E-Basman,M/Brighton 1980/EXT 99] **8.c4 e6 9.Nc3 dxc4 10.e4** Black is a solid pawn up according to Fritz but his pieces are somewhat cramped and he lags in development. **10...Be7 11.d5!** If now castles white can play d6 and try to tie up the black pieces **11...cxd5 12.exd5 exd5 13.Ng5 Bg4 14.Nxd5** (diagram right) **Bxd1** And now a sparkling mating attack [14...Qc5 15.Nxe7 Bxd1 16.Ng6+ Kd8 17.Nxf7+ Kc7 18.Bf4+ Kb6 19.Be3 Qxe3 20.Rxe3 Rhe8 21.Ne7 Bh5 22.Nd6 Rf8 23.Nxc4+ Kc7 24.Rc1 Ng4 25.Na5+ Kb6 26.Nd5+ Kxa5 27.Ra3+ Kb5 28.Nc7+ Kb6 29.Rb3+ Ka5 30.Rb5+ Ka4 31.Rc4# I know its kind of a long variation but its rather cute!] **15.Rxe7+ Kf8 16.Rxf7+ Ke8 17.Re7+ Kf8 18.Ne6+ Kg8 19.Rxg7# 1-0**



Position after 14. Nxd5. Nick has left his Queen en prise. Can black survive if he takes it?

# Top Winners of the Missouri State Title

John Ragan	12	1948, 1953, 1956, 1957, 1958, 1959, 1961, 1970, 1972, 1974, 1975, 1977
Michael A. Brooks	11	1981, 1985, 1987, 1988, 1990, 1991, 1992, 1993, 1994, 1995, 2003
Ronald G. Luther	9	1993, 1997, 1998, 1999, 2002, 2003, 2006, 2007, 2008
Kenneth E. Jones	8	1976, 1979, 1984, 1985, 1986, 1989, 1993, 2003
Robert H. Steinmeyer	5	1942, 1947, 1950, 1954, 1958
Elliot Winslow	5	1969, 1972, 1973, 1974, 1975
Doug Eckert	5	1983, 1985, 1986, 1990, 2003
Robert M. Jacobs	5	1974, 1993, 1995, 1996, 2004
Bob Holliman	4	1998, 2003, 2004, 2005
James R. Voelker	4	1994, 1998, 2004, 2005



Certain years numerous players tied for the state title in which case the winner on tie breaks was awarded the plaque; however, all players tied for 1st place were considered to be State Co-Champions.

For the complete history of Missouri State Champions, please visit <http://www.jimvoelker.com/statech.html>



# Spotlight on Missouri Chess

~ Steve Goldberg ~

[Scholasticchess@hotmail.com](mailto:Scholasticchess@hotmail.com)



## Margaret M. Hua



According to USCF records, St. Louisan Margaret Hua played her first rated tournament in November 2005, at which she earned a provisional rating of 326. Now ten years old and in fifth grade, she competed in an amazing 38 USCF-rated events in 2008 and finished the year rated 1565.

At the end of 2008, Margaret was ranked #25 nationally among U.S. girls age 13 and under, and was #44 among all ten-year-olds, male or female, in the U.S. No other Missouri resident was listed among the nation's top 100 in the 10-year-old category.

She is a frequent visitor to the new Chess Club and Scholastic Center of St. Louis. Club Executive Director Tony Rich commented about Margaret, "She is a promising young talent and we're excited to help her develop into a formidable chess player. When she visits the club, she's a typical little girl, but when she sits down at that board, she's a fierce competitor interested in only one thing: victory!"

In April 2008 in Dallas, she competed in the All Girls National Championship. In her 10 and Under section, there were 53 youngsters, and Margaret finished in a five-way tie for second place, just half a point behind the winner. Then in October 2008, she had the honor of being one of only 28 U.S. players competing at the annual World Youth Chess Championship, held in Vietnam. In eleven rounds, she captured three victories and three draws against opponents from all over the world, and gained invaluable experience.

Here is her fifth-round game against her Italian opponent, with annotations from Fritz:

**C50: Hungarian Defense**  
World Youth Championship  
W: Alessia Santeramo  
B: Margaret Hua

**1.e4 e5 2.Nf3 Nc6 3.Bc4 Bc5 4.d3 h6** Prevents intrusion on g5. (4...Nf6 5.Be3 Bxe3 6.fxe3=)  
**5.Be3 5.c3 Bb6** with White slightly better.  
**5...Bb6 6.Nc3 Nf6 7.Bb3 7.d4 exd4 8.Nxd4 0-0**

White is slightly better. **7...d6=** Covers c5. **8.h3** Controls g4. **8...0-0 9.Qe2 9.0-0 Be6= 9...Be6 10.0-0-0 10.Bxe6!**? should be considered **10...fxe6 11.0-0-0= 10...Bxb3** Black is slightly better. **11.cxb3 d5 12.Bd2 12.d4 exd4 (12...Nxe4?! 13.dxe5 Nxc3 14.bxc3=)** 13.exd5 Nxd5 14.Nxd4 Nxe3 15.Nxc6 Qg5 and Black is better. **12...d4 12...Re8 13.exd5 Nxd5 14.Rhe1** Black is better. **13.Nb1 13.Na4 a5 14.Kb1 Ba7** with Black better. **13...Qd6** White has a cramped position. **14.Na3 a5 15.g4 15.Kb1 Bc5 16.Nc2 Nb4** with Black slightly better. **15...Nh7 15...Bc5 16.Nb5 Qe7**



**17.g5 hxg5 18.Kb1** Black is better. **16...a4 (Diagram Right)** Black has an active position. **16...Bc5!**? should not be overlooked **17.Nc2 Rfe8** and Black is slightly better. **17...Qe7!**? must be considered **18.b4 a3** White is slightly better. **18.b4± Nxb4 19.Nfxe5 Rfe8 20.Qf3 f6 21.Ng6 21.Nd7 Qb5 22.Ndxb6 cxb6± 21...Nc6 21...Ng5 22.Qe2 a3 23.h4** and White is slightly better. **22.Nf4 22.h4 Ba5 23.Nxa5 Nxa5± 22...Ne5** White is slightly better. **23.Nxe5** better is **23.Qe2** and White is slightly better. **23...Qxe5 23...fxe5 24.Nd5 Ba5 25.Rc1= 24.Rc1 24.Nd5 Red8 25.Rc1 a3± 24...Qb5 24...Ng5 25.Qg3= 25.a3 (Diagram Left)** better is **25.h4!**?± **25...Bc5=** Black threatens to win material: **Bc5xa3 26.Ka2?** **26.Ka1** is better and would



Margaret in front of the hotel in Vietnam.



Margaret takes on GM Maurice Ashley at the Saint Louis Chess Club & Scholastic Center

keep White in the game  
 26...Ng5 27.Qe2= **26...Qb3+**–  
 + **27.Ka1 Bxa3 28.Rb1??** the  
 position was bad, and this mis-  
 take simply hastens the end  
 28.bxa3 Qxa3+ 29.Kb1–+  
**28...Ra6** better is 28...Bb4 and  
 Black takes home the point  
 29.Qd1 Bxd2–+ **29.Qd1 Bb4**  
 Black intends a3 (29...Bd6!?)  
 might be the shorter path



30.h4–+) **30.Bxb4 Qxb4 31.Qe2 31.Qc2 a3 32.b3 Rc6–+**  
**31...a3 (Diagram Right) 32.Rbc1 32.b3–+ 32...axb2+**  
**33.Kb1 Ra1+ 34.Kc2 Qc3+ 35.Kd1 bxc1Q# 0–1**

Steve Goldberg is a regular contributor to Chesscafe.com, and maintains a popular website on Scholastic Chess, which can be found at [www.scholasticchess.blogspot.com](http://www.scholasticchess.blogspot.com).

## 13th Annual Mid-America Open March 13-15, 2009

**\*\*WorldChessLive Grand Prix Point Event—100 Enhanced GPP\*\***

**5SS, 40/2, SD/1** (2-day option, rds 1-2 G/70), Crowne Plaza Hotel, Clayton. 7750 Carondelet Ave., Saint Louis MO 63105. **\$\$ 20,000 b/250 paid entries** (re-entries, unrs in U1200-U2000, count as half, U900 Section one quarter), minimum \$16,000 (80% of each prize) guaranteed.

In 7 sections: Open: \$2000-1000-600-400, clear winner or 1st on tiebreak \$100 bonus, top U2300 \$900, U2200 \$800, U2100/Unr \$700. FIDE rated.

Under 2000: \$1500-700-400-300.

Under 1800: \$1500-700-400-300.

Under 1600: \$1500-700-400-300.

Under 1400: \$1200-600-300-200.

Under 1200: \$1200-600-300-200.

Under 900: \$100-600-40, trophies to top 7. Unrated may enter any section, with prize

Limits: U900 \$50, U1200 \$150, U1400 \$300, U1600 \$400, U1800 \$500, U2000 \$700 Balance goes to next player(s)

**Entry Fee:** 3-day \$103, 2-day \$102 mailed by 3/5, all \$105 online at chesstour.com by 3/10, \$110 phoned to 406-896-2038 by 3/10 (entry only, no questions), \$120 at site. **Under 900/Unr Section Entry**

**Fee:** 3-day \$23, 2-day \$22 if mailed by 3/5, \$25 online at chesstour.com by 3/10, \$27 phoned to 406-896-2038 by 3/10, \$30 at site. **FREE ENTRY TO UNRATED IN U900 OR U1200 SECTIONS.** Re-

entry \$60; not available in Open Section. No checks at site, credit cards OK. MCA membership. (\$5; higher with printed magazine) required for Missouri residents. 3-day schedule: **Registration ends**

**Friday 6 pm**, rounds Friday 7 pm, Saturday 11-6, Sunday 9-3:15. 2-day schedule: Registration ends

Saturday 10 am, rounds Saturday 11-2:30-6, Sunday 9-3:15. Byes: OK all; must commit before round 3, having under 2 points. **Hotel Rate:** \$87-87, 888-303-1746, 314-726-5400, request chess rate, reserve by 2/27 or rate may increase.

**Entries:** Send to Continental Chess, Box 249, Salisbury Mills NY 12577. Questions: 845-496-9658.



# Understanding the Vancura

~ Selden Trimble ~

## Section 1: Carlson versus Ivanchuk and the Vancura Position

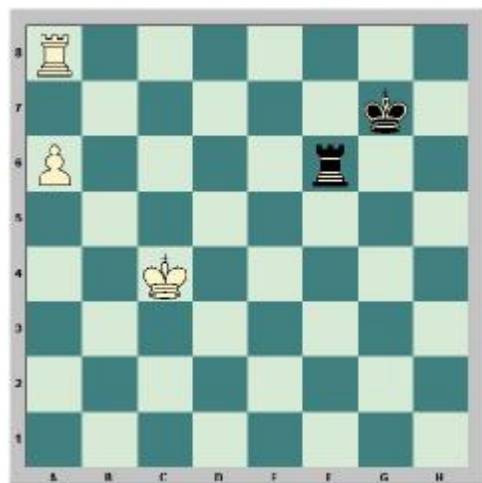


The position shown here occurred in the game between Magnus Carlsen and Vassily Ivanchuk, played at Cap d'Agde on October 31, 2008. It illustrates how important it is to know ahead of time how certain rook and pawn endgames can be drawn. **38.Ra1** White cannot afford to exchange rooks because Black's outside passed pawn will decide things. See the note to White's 49th move. **38...Ra8 39.Ra4** This prevents the pawn from advancing for the time being. **39...Kf7 40.Kf3 Ke6 41.Kf4 h6** To keep White's king off g5. Also, Black's g-pawn no longer is protected. This might be important later. **42.Ke3 Ke5 43.Kf3** This keeps Black's king away from White's h-pawn. **43...Kd6** Black is going to drive White's rook away from blocking Black's a-pawn. **44.Ke3 Kc5 45.Kd3 Kb5 46.Rd4!** It's tempting to move the rook to a1. But Black would steadily advance his a-pawn, decreasing the mobility of White's rook with each move. A mobile rook is very important.

**46...a4 47.Kc2** White has to use his king to keep Black's a-pawn from queening. **47...a3 48.Kb1 Ra4 49.Rd6** If White trades rooks, Black will march his king to the e-file to take White's e-pawn and then march his king to h-file to take White's h-pawn. Black would have an easy win. But why does White give up his e-pawn and h-pawn to Black's rook? Perhaps because he knows about the Vancura position. **49...Rxe4 50.Rxg6 Rxe4** This is drawn with best play. See Eugene Nalimov's 6-piece endgame table on the web. **51.Ka2 Rh3 52.Rg4** This keeps the Black king on his own side of the board. **52...h5 53.Rf4** The rook would like to stay as far from the opposing king as possible. **53...Kc5 54.Ra4 Kb5 55.Rf4 Re3** With this move, Black's gives up all hope of winning. But then the position was drawn anyway **56.Rf5+ Kb4 57.Rxe5 Re2+ 58.Ka1** [Diagram right] A draw was agreed. 1/2-1/2



## Section 2: The Vancura Position.



This study was done by Josef Vancura (1898 - 1921) and published in 1924, three years after his death, in volume 28 of the journal, "Rijen." Evidently, the drawing method was not known before this time. Much of the following is taken from John Nunn's "Secrets of Rook Endings," Henry Holt and Company, 1992. (diagram left) **1.Kb5** White defends his pawn with his king so as to activate his rook. **1...Rf5+** Black now begins a series of checks that White cannot escape. **2.Kb6 Rf6+ 3.Kc5 Rf5+ 4.Kd4 Rf6! 4. ... Rf4+??** would be a bad mistake. After that would follow **5. Ke5! Rf6? 6. Rg8+**, and Black would be forced to exchange rooks. The a-pawn would easily queen. Of course, Black could play **5. ... Ra4** instead of **5. ... Rf6**. But we'll see later that this is still a lost position for Black. **5.Ke5 Rg6 6.Kd5 Rf6 7.a7** This is the



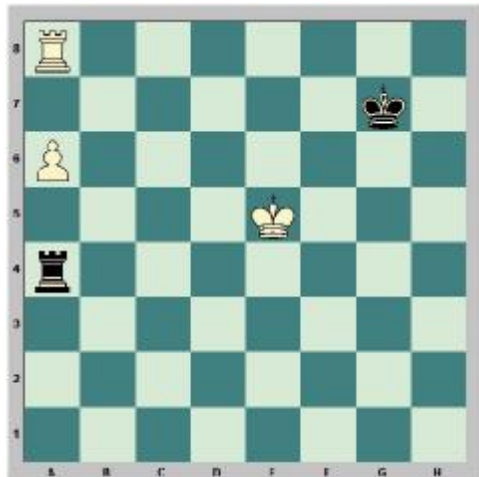
only different idea that White can use. **7...Ra6! 8.Kc5 Ra1** [diagram]

This is a draw, provided Black knows what he's doing. In particular, he must keep his king on either g7 or h7. It's clear why Black can't leave the 7th rank: White would check the Black king with his rook and promote his pawn on the next move. But why can't Black play, for example, Kf7? Because White has the tactical trap of playing Rh8 and, when Black takes the pawn, playing Rh7+, winning Black's rook. So Black just keeps his rook on the a-file, generally on a1, until the White king moves to b6 or b7. Then Black checks the White king off the b-file and moves his rook back to the a-file. If the White king comes to b2 to attack the rook, the Black rook goes to a6 and the whole process starts over. Note that this would be a draw even if White had a g-pawn or an h-pawn. For example, if White had an h-pawn, Black would put his king on h7, blocking the pawn from queening. All White could do would be to march his h-pawn to h6. (Black would never take the pawn! That would allow Rh8+.) The White pawn on a6 would have no effect on the method that Black uses to draw. This is why the game between Carlsen and Ivanchuk was a draw.



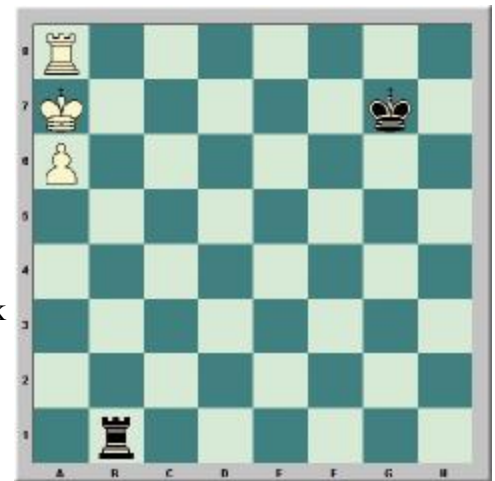
### Section 3: Variation from the Vancura

In the note above to Black's 4th move, let's see what happens if **4. ... Rf4+?? 5. Ke5! Ra4**. [Diagram left] **6.Kd5 Ra1 7.Kc5 Rc1+** Black could try to reestablish the Vancura position by playing **7. ... Rf1**, intending **8.**



... Rf6 next. But this leaves White with a free move. So White repositions his rook with **8. Rb8**. This allows White to escape checks by moving his king to a7. In fact, this is what happens in the line below. **8.Kb6 Rb1+ 9.Ka7** [Diagram below] Black runs out of checks. White is now protecting the pawn with his king and can reposition his rook. **9...Rd1 10.Rb8 Kf7** The king tries to come to the rescue, but to no avail. **11.Kb7 Rb1+ 12.Ka8 Rc1 13.a7 Ke7 14.Rb6 Kd7 15.Kb7 Rc7+ 16.Ka6 Rc8 17.Rb8 Rc6+ 18.Kb5** The checks end and White's pawn will queen. There are, of course, many ways that Black could vary. But the idea is that White

can escape Black's checks by moving his king to a7. Then White's rook can play an active role in helping to promote the pawn. So it is essential for Black to always be able to check White's king from the side or to attack White's pawn. It is a big mistake for Black to try to defend by moving his rook behind White's pawn, which seems the natural thing to do.



For more on the Vancura position and the game Carlsen v Ivanchuk, see the website: <http://www.chessvideos.tv/forum/viewtopic.php?t=4071&sid=b0932a6361a1b5d0d7c77c988e8897bd>.

“The Passed Pawn is a criminal, who should be kept under lock and key. Mild measures, such as police surveillance, are not sufficient.” Nimzovich

# Thanks for Chess

~Matthew J. Angeli~  
Chief Tournament Director

While many shopped in the days after Thanksgiving, many played chess as well. The Thanksforchess November 29, 2008 tournament drew a nice crowd of 47 players. The format seemed to be a big hit as it provided players a chance to play 5 games against others close to their rating instead of being bumped way up and then ping-ponged back way down. The O1700 section had a high count of 19 players while the 1300-1700 section got a modest 12, and the U1300 section received a decent crowd of 16.

Despite efforts by the tournament director's siblings in helping with registration, the tournament



started typically late due to the relatively high turnout, but was back on track by the end of the day. Due to the higher turnout, the prize fund for each section was adjusted accordingly and all three prize funds combined reached a grand total of \$1053. In addition to the big prize fund, an anonymous donor gave \$150 to be divided upon the three sections as brilliancy prizes. The brilliancy prizes did not seem to generate much attention, however this can probably be as-

certained to the reasoning that the prize was a last-minute change in plans. In the future if such a prize is advertised in advance, it will receive more attention and generate more interest. Also, if the brilliancy prize is to be continued, it may be wise for the club to organize a small committee of people to decided on who should win the prize. Nevertheless, I am very thankful such a donor stepped up to help promote chess and I sincerely hope to see such efforts continue.

Over 1700     1<sup>st</sup> Ron Luther  
                  2<sup>nd</sup> James Long, Nick Karlow, James Smallwood, Brad Schlosser, and Jacob Wilkins  
1300-1700    1<sup>st</sup> Yue Xu  
                  2<sup>nd</sup> Bob Howe, and Taylor Tyre  
Under 1300   1<sup>st</sup> Nathan Phan  
                  2<sup>nd</sup> Vishal Bharadwaj, Don Harper, and Suhas Bobba

## Brilliancy Prize Winners:

O1700         Ron Luther and Brad Schlosser (split \$50 prize)  
1300-1700    Mike Kummer  
U1300         Sean Trani

I would like to thank those who commented, praised, and constructively criticized the tournament. As a TD and a tournament organizer, my goal is to run a smooth and fair tournament. Keeping these things in

## 2009 Saint Louis Open — April 25 & 26, 2009

### *\*Missouri State Invitational Championship Qualifier\**

5SS,G/120. Location: Chess Club & Scholastic Center of Saint Louis, 4657 Maryland Ave., Saint Louis, Missouri 63108. Prizes: \$300 first place Guaranteed. \$150 in each X, A, B, C, D, E, U1000/Unr. b/60 entries. Entry Fee: \$40 if received by 4/17. \$50 on site. K-12 may enter at half fee but are eligible for only half of class prize. Registration: 8:30-9:30. Rounds: Saturday-10:00/2:30/7:00; Sun-9:30/2:00 MCA membership required for MO residents available on site from \$5, Entries/Info: Missouri Chess Association, 7138 Lindenwood, St. Louis, MO 63109 314-645-2897

mind, I very much appreciate input.

As some know, I know there were a couple issues that I probably did not deal with complete correctness. While the questioned calls did not come out to the magnitude of the famous 1985 World Series blown call by the umpire at first base, I still very much regret they happened. I apologize to all the tournament players as I feel that I failed to keep a tournament as fair as reasonably possible. I wish everyone too know that I accept responsibility for what happened, and I will move on and take this a learning experience for the next tournament. The questioned decisions made at the tournament will not happen at another tournament I direct or run.

I thank everyone who came and hope to see them at future chess events whether they are run by me or someone else.

Here's are two of the brilliancy prize winning games from the event.

In the U/1300 division, Sean Trani comes out ahead in a tactical melee against his higher rated opponent.

#### Ruy Lopez

Thanks For Chess U/1300

W: Sean Trani (849)

B: Don Harper (1130)

1.e4 e5 2.Nf3 Nc6 3.Bb5 a6 4.Ba4 Bc5 5.c3 Nf6 6.d4 exd4 7.cxd4 Bb4+  
8.Nc3 Nxe4 9.Qd3 d5 10.0-0 0-0 11.Nxe4 dxe4 12.Qxe4 Re8 13.Qh4 Be7  
14.Qh5 Be6 15.Bc2 g6 16.Qh6 Nxd4 17.Ng5 Bxg5 18.Bxg5 f6 19.Bxg6

Qe7 20.Bxe8 Rxe8 21.Bxf6 Nf5 22.Qg5+ 1-0

White's is able to see far ahead in a tricky Queenside position in this game. Hanging a rook is a small price

#### Scandinavian Gambit

Thanks for Chess 1300-1700

W: Michael Kummer (1618)

B: Nate Noss (1358)

to pay for what follows.

1.e4 d5 2.exd5 Nf6 3.c4 c6 4.dxc6 Nxc6 5.Nf3 Bg4 6.Be2 e6 7.0-0 Bc5  
8.Nc3 0-0 9.h3 Bf5 10.a3 Rc8 11.b4 Be7 12.d4 Qc7 13.b5 Na5 14.c5

Rfd8 15.Qa4 b6 16.c6 a6 17.bxa6 Qxc6 18.Qxc6 Rxc6 19.Nb5 Nb3 20.Bf4!? Nxa1 21.a7 Nb3 22.Bb8  
Rcc8 23.a8Q Rxb8 24.Qa4 Bc2 25.Qc4 Rbc8 26.Nc7 Na5 27.Qxc2 Bd6 28.Qb2 Bxc7 29.Rc1 Bf4 30.Rxc8  
Rxc8 31.g3 Bc7 32.Qc2 Nd5 33.Ng5 g6 34.Bf3 Ne7 35.Qa4 Rd8 36.h4 Nf5 37.d5 exd5 38.Bxd5 Nd6 39.h5  
h6 40.Nxf7 Nxf7 41.hxg6 Kf8 42.Bxf7 Kg7 43.Qc2 Be5 44.f4 Bd4+ 45.Kg2 Be3 46.Qc7 Rd2+ 47.Kf3 Bc5  
48.Be8+ Kf6 49.Qf7# 1-0

# Missouri Chess Association News

## Board of Director Meeting Summary: December 13th, 2008

The MCA Board of Directors met on December 13th, 2008 at Memorial Union, in Columbia Missouri. Members present: Ed Baur, Thomas Rehmeier, Bob Howe, Ron Luther, Bob Holliman, and Tim Campbell, Absent: Bill Wright, John Sutton & John Weidner. The next meeting was set for March 7th, at 2pm.

A number of candidates for the Missouri Chess Hall of Fame were discussed. John Ragan, the all time leader with 11 state championships, was elected.

New Business: Bob Holliman suggested the expansion of the terms directors serve. The board tentatively agreed on changing the terms from one year to two year terms. Mr. Holliman plans to initiate the bylaw change process to allow approval of this plan.

Ron Luther presented a draft for a Mission Statement and

Code of Conduct for Board Members. These were discussed and will be revised and reviewed at the next meeting.

Thomas Rehmeier has agreed to run the Missouri Open again this year as a Chess Festival, with numerous side events to go along with the main event. The board approved a new plan for the Invitational portion of the event. A copy of that proposal is listed below.

Ed Baur reported that the Gateway Chess League was prepared to run the Scholastic Championship and the Denker/Polgar qualifying events. Both will be held at the Capital Plaza Hotel in Jefferson City, on February 28th and March 28th respectively. The board affirmed that the Feb. 28th event is the only official sanctioned state scholastic championship, and that the board will do all it can to get word out on the sanctioned event.

## 2009 Invitational Tournament Guidelines: adopted 12/13/08

The 2009 Closed Invitational Championship will be run as a swiss event consisting of only participants who receive invitations to play. The stated goal is to create an event of approximately 20 people. Enough to allow most qualified players to participate, while keeping the event small enough to ensure the opportunity for a single winner.

Invitations will be granted in the following ways.

- Previous state champions – Previous state champions from the past 10 years receive an automatic invite.
- Denker tournament representative
- Polgar tournament representative
- All Missouri residents with a USCF rating 2200 or over
- Missouri Heritage events automatically qualify at least one. (St. Louis Open, KC Open, M/X Class Champion, and Missouri Open Winner)
- Select other Tournament winners \*

Other tournaments may become qualifying tournament by meeting the following standards:

- Be a minimum of 4 rounds
- Game must be G/75 or greater
- The tournament must require MCA membership
- Must be held in Missouri
- Held at least 30 days before the Invitational event

A qualified tournament with full paid attendance of 24-49 grants one spot.

A tournament with 50-74 grants two spots.

A tournament with 75+ grants three spots

Notes:

- TD's should contact the Invitational organizer before running the event to confirm it has been identified as able to award a spot.
- A tournament director or organizer may not receive an invitational spot from his/her own event.
- Directors must be members of the MCA, and must require membership from all players in the qualifying events.



# ***Regional Chess Clubs***

## **SAINT LOUIS AREA CLUBS :**

**Delmar Loop Chess Club:** Location: St. Louis Bread Company 6630 Delmar Ave. (U-City) Chess played every night 6-9pm Most players come on weekends. Contact: Joseph Garnier at <[chessoholic@sbcglobal.net](mailto:chessoholic@sbcglobal.net)>

**Indian Trails Branch Library:** Location: St. Louis County Library 8400 Delport Drive (314) 428-5424 Meets: Tuesdays 3:30 PM. Contact: any library employee

**Mid Rivers Mall Chess Club:** Location: Food Court, Mid Rivers Mall, Mid Rivers Mall Drive, St. Peters. Chess played every Saturday, 8am-noon. Contact: Luke Brodland at <[kalomundi\\_00@yahoo.com](mailto:kalomundi_00@yahoo.com)>

**Saint Louis Chess Club and Scholastic Center:** 4657 Maryland Ave. Saint Louis. For club information and tournament schedule, see <http://saintlouischessclub.org>, (314) 361-CHESS or contact Tony Rich, <[trich@tonyrich.org](mailto:trich@tonyrich.org)>, Mon-closed, T-W 3-10pm, Th-F 3-11pm, Sat 12-11pm, Sun 12-10pm

**Saint Peters Chess Club:** Location: St. Peters. 235 Salt Lick Road, St. Peters. Meets: Friday nights starting at 6pm. Contact: Tim Nesham at <[tim.nesham@gmail.com](mailto:tim.nesham@gmail.com)>

**Sunset Hills Parks & Recreation Activities Center:** 12450 West Watson Road, Thursday 10am-2pm. (314) 842-7265

## **KANSAS CITY AREA CLUBS:**

**Heart of America Chess Association:** Location: Noland Baptist Church 4505 S Noland Rd., Independence, MO 64055. Meets: Friday Nights 7-11pm. There are no fees or charges to play, this club is for the community. Contact: Bob Holliman at (816) 836-0568 or <[chess\\_entries@comcast.net](mailto:chess_entries@comcast.net)>

**Kansas City (KS) Public Library:** Location: 625 Minnesota, Kansas City KS. Meets: Wednesdays 5:30-8:00 PM Contact: Brooke Leavitt at (913) 551-3280

**Rockhurst Community Chess Club:** Location: Rockhurst University Community Center, 5401 Troost Ave., Kansas City MO 64110 Saturdays 10:00am-1:00pm Contact: Alicia Douglas at (816) 501-4306

**The Chess Club:** Location: Vivion West Shopping Center (North KC) 2314 NW Vivion, Riverside MO 64150. Website: <http://www.powerpawn.net>

**Westport Chess Club:** Location: Westport Flea Market at 817 Westport Rd., Kansas City, MO 64111 (just east of the intersection of SW Trafficway and Westport Rd.) year-round basis. Tuesday's 6:30-11:00 PM \$2 fee adults, \$1 under 18 Contact: Bill Mendus <[wmendus@swbell.net](mailto:wmendus@swbell.net)>

## **CLUBS IN OTHER AREAS OF MISSOURI:**

**Columbia -- University of Missouri Chess Club:** Location: Memorial Union (518 Hitt Street) Room S203 May-August: Lakota's Coffee, 24 S. Ninth St. Mondays 7-10pm. Contact: Charles Ward at <[czar8196@tranquility.net](mailto:czar8196@tranquility.net)> Website: <http://www.students.missouri.edu/~muchess>

**Jefferson City -- Jefferson City Chess Club:** Contact Tim Boyd—[tboyd66@embarqmail.com](mailto:tboyd66@embarqmail.com) or (573) 635-6299.

**Joplin -- Joplin Chess Club:** Contact Bart Gibbons— [joplinchess@yahoo.com](mailto:joplinchess@yahoo.com) or (417) 396-0788.

**Mineral Area Chess Club:** Location: Tourist Center on the Mineral Area College Campus in Park Hills. Monday Nights from 7-9pm. Contact: James Lyon at (573) 756-6009, or by e-mail at <[jaaalyon@sbcglobal.net](mailto:jaaalyon@sbcglobal.net)>

**Rolla -- MS&T Chess Club:** Location: Havener Center, Walnut Room, 1346 N. Bishop Ave., Rolla, MO 65401. Meets: Wednesdays 7 PM. Student President: Thomas Rehmeier at <[trrthf@mst.edu](mailto:trrthf@mst.edu)> Info: Selden Trimble at <[strimble@rollanet.org](mailto:strimble@rollanet.org)>

**Springfield -- MO State University Chess Club:** Location: Plaster Student Union, room 317-A. Meeting hours: Mondays 7-10pm. Contact: Nick Beatty at <[Nbeatty@missouristate.edu](mailto:Nbeatty@missouristate.edu)> Website: <http://www.organizations.missouristate.edu/chess>

**Springfield -- Springfield Park Board Chess Club:** Location: Southside Senior Center 2215 S. Fremont Ave., Springfield, MO Meets: Friday 6:30 to 11PM USCF-rated events. Contact: Jim Baumlin at (417) 831-6585 Website: <http://www.geocities.com/SpringfieldChessClub>

# Featured Game

Annotations by Selden Trimble:

This game was played in the last round of Charlie Ward's Adolf Anderssen Open on October 18, 2008, in Columbia, Missouri. Whoever won the game would probably win the tournament. The time control was G/75.

## Benoni Defense

Anderssen Open

W: Selden Trimble (1907)

B: Nathaniel Fast (1956)

**1.d4 Nf6 2.c4 c5 3.d5 e5 4.Nc3 d6 5.e4 Nbd7** This is not given in ECO. The only two lines given are Be7, followed by quick castling, and g7. **6.Bd3**

**Be7** [Diagram Right] This transposes to an ECO footnote which continues 7. h3 h5 8. f4 exf4 9. Bxf4 Ne5 10. Nf3 Nfd7 11. O-O Bf6 12. Nb5 Qb6 13. a4 a5 14. Be2 +=, Psahkis-B nsch, Tallinn, 1983--35/98. **7.Nge2 a6 8.0-0 h5!?** Maybe this is premature. Black's development is not all that good. **9.Ng3** It might have been better to play f4. **9...g6 10.h3 h4 11.Nge2 Nh5**

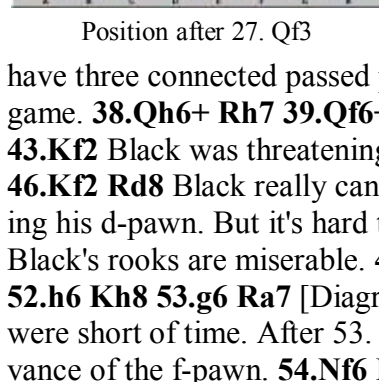
[Diagram Left] White has not played well and Black has. Black is going to get an easy kingside attack. So White has to get something going on the queenside. **12.a3 Bg5 13.b4 b6 14.bxc5 bxc5 15.Rb1 Bxc1 16.Qxc1 g5 17.Bc2 Nf4 18.Ba4 Kf8!** This is a good move. It breaks the pin and starts to clear the back rank for the rooks. **19.Qd2 Nb6 20.Nxf4** It's dangerous for White to open a file in front of his king. But Black's knight is very strong. **20...gxf4 21.Bc6** This interferes with Black's idea of getting his rooks to the kingside. **21...Ra7** If 21. ... Rb8, then 22. Na4 followed by Qa5 is awkward for Black. **22.Qd3 Rg8 23.Kh1 Kg7 24.Rb2 Kh6**

**25.Rfb1** White's attack on the queenside now amounts to something. **25...Nd7 26.Na4 Qg5 27.Qf3** [Diagram below left] **27...f5?** This ultimately allows White to get the e4-square for his knight. But it's hard to suggest what Black ought to do. Maybe 27. ... Nf6 with the idea of sacrificing the knight by Nh5 - g3+. **28.Bxd7 Bxd7 29.Nc3 Be8 30.exf5 Bh5 Qxf5**, threatening to play e4 after a timely Bg6, would have been better. **31.Qe4** [Diagram right] **31...f3?** This is premature. Black just miscalculated something. Either 31. ... Rf7 or Rag7 would have been better. **32.Rg1 Rag7 33.g4! hxg3 34.fxg3** Black's f3 pawn is now going to fall. Black's attack is really over. **34...Qf6 35.Kh2** If **35. g4?**, then 36. ... Bxg4 is probably winning for Black. **35...Qd8 36.Qe3+ Kh7 37.Ne4 Kh8** This allows White to exchange queens.

White is going to Black plays the aggressive f3 here an end- **40.Qxd8 Rxd8 41.g4 Be8 42.Kg3 Bd7 43...Rdg8 44.Rg3 Ba4 45.Kxf3 Bd1+** to get his two rooks tied down defending anything much better. **47.Rb6 Rgd7 49.Ke3 Bd1 50.h4 Bc2 51.h5 Kg8** This loses quickly. But both players **54. Kxe4**, Black cannot stop the assigned. White is threatening mate in Rg8 **55. Rb8!**, it's still mate in two. 1-0



Position after 11...Nh5



Position after 27. Qf3

White has three connected passed pawns in game. **38.Qh6+ Rh7 39.Qf6+ Rhg7 43.Kf2** Black was threatening Bxf5. **46.Kf2 Rd8** Black really cannot afford his d-pawn. But it's hard to suggest Black's rooks are miserable. **48.g5 Bc2 52.h6 Kh8 53.g6 Ra7** [Diagram center] were short of time. After 53. ... Bxe4 advance of the f-pawn. **54.Nf6** Black re-two starting with 55. g7+. After 54. ...



White's passers dominate the endgame



The opening transposes into a Czech Benoni after 6. .Be7





# RECENT GAMES FROM MISSOURI CHESS PLAYERS

## Dutch Defense

Howard Staunton Open

W: Selden Trimble (1937)

B: Tim Campbell (1417)

1.d4 d5 2.c4 e6  
3.Nc3 f5 4.Nf3 Nc6  
5.Bf4 Bd6 6.Bxd6  
Qxd6 7.e3 a6 8.c5

Qd8 9.Be2 Nf6 10.0-0 0-0 11.Rb1 Ne4 12.Qc2 Bd7  
13.b4 Ne7 14.Ne5 Nc6 15.Nxc6 Bxc6 16.a4 Rf6  
17.b5 Bd7 18.bxa6 bxa6 19.Nxe4 fxe4 20.Rb2 Rh6  
21.g3 Qg5 22.Rfb1 Rf8 23.Bxa6 Rff6 24.c6 Rxh2  
25.Kxh2 Rh6+ 26.Kg2 Qh5 27.Kf1 Qf3 28.Ke1  
Rh1+ 29.Kd2 Rh2 30.Kc3 Be8 31.Qe2 Qf6 32.Rf1  
e5 33.Qb5 exd4+ 34.exd4 Qf3+ 35.Kb4 e3 36.Ka5  
e2 37.Qxe2 Qc3+ 38.Rb4 Qxc6 39.Rc1 Qd7 40.Re1  
Kf7 41.Bb5 c6 42.Qxe8+ Qxe8 43.Rxe8 Kxe8  
44.Bxc6+ Kd8 45.Rb2 Kc7 46.Bxd5 Rh5 47.Rb5  
h6 48.Be4 1-0

## Queen's Pawn Opening

Howard Staunton Open

W: Bob Holliman (2100)

B: Thomas Rehmeier (1762)

1.Nf3 Nf6 2.d4 d5  
3.g3 c5 4.c3 Bf5  
5.Qb3 Qc8 6.Bg2  
Nc6 7.0-0 e6

8.Bg5 Ne4 9.Be3 Bd6 10.Nbd2 b6 11.Nxe4 Bxe4  
12.Bh3 Bxf3 13.exf3 cxd4 14.cxd4 Qb7 15.f4 g6  
16.Bg2 Rc8 17.Rac1 0-0 18.Qd3 Ne7 19.Rfd1 Rxc1  
20.Rxc1 Rc8 21.Qd2 Rxc1+ 22.Qxc1 Qc6 23.Qd2  
a6 24.Bf1 b5 25.Bd3 Nc8 26.Qe2 Nb6 27.h4 Be7  
28.h5 Nc4 29.hxg6 hxg6 30.Qc2 Kg7 31.Kf1 a5 1/2-1/2

## King's Gambit

Howard Staunton Open

W: Vairam Arunachalam (1580)

B: Jabez Campbell (528)

1.e4 e5 2.f4 exf4  
3.Nf3 Nc6 4.Bc4  
Nf6 5.Ng5 Ne5  
6.Bb3 Bc5 7.d4 Bd6

8.dxe5 Bxe5 9.Nxf7 Qe7 10.Nxh8 Nxe4 11.Qh5+ g6  
12.Nxg6 hxg6 13.Qxg6+ Kd8 14.Qxe4 Qh4+ 15.g3  
Qe7 16.Bxf4 Bxf4 17.Qxe7+ Kxe7 18.gxf4 d6  
19.Nc3 c6 20.0-0-0 Bg4 21.Rde1+ Kd7 22.Ne4 Ke7  
23.Nf2+ Kd7 24.Nxg4 Rf8 25.Be6+ Kc7 26.f5 Kd8  
27.f6 d5 28.f7 Ke7 29.Bxd5+ Kd6 30.Bb3 b5  
31.Re8 Rxf7 32.Bxf7 a5 33.Ne5 a4 34.Rd1+ Kc5  
35.Nd7+ Kb4 36.a3+ Ka5 37.Ra8# 1-0

## Slav Defense

Howard Staunton Open

W: Tim Campbell (1417)

B: Kia Dalili (1009)

1.d4 Nf6 2.Nc3 d5  
3.f4 Bf5 4.e3 e6  
5.a3 c5 6.Bd3 c4  
7.Bxf5 exf5 8.Nf3

a6 9.0-0 Be7 10.Ne5 Nbd7 11.Bd2 0-0 12.Rf3 Ne4  
13.Nxe4 fxe4 14.Rh3 Nxe5 15.fxe5 g6 16.Qg4 f6  
17.Qe6+ Kg7 18.Bc3 Rc8 19.Rf1 Rc6 20.Qg4 Qc8  
21.Qh4 h5 22.Rf4 Rh8 23.Qf2 g5 24.Rg3 Kg6

25.Bb4 Qe6 26.Bxe7 Qxe7 27.Rf5 Qe6 28.Rxf6+ Q  
xf6 29.exf6 Rxf6 30.Qe1 Rhf8 31.h3 h4 32.Rg4 1-0

## Fianchetto Grunfeld Defense

Summer Swiss

W: Kevin Johnson (2024)

B: Al Howlett (1822)

1.c4 Nf6 2.Nc3 d5  
3.cxd5 Nxd5 4.g3  
g6 5.Bg2 c6 6.Nf3  
Bg7 7.0-0 0-0 8.d4

h6 9.e4 Nxc3 10.bxc3 Nd7 11.Be3 Nf6 12.Ne5 Nd7  
13.f4 Nxe5 14.fxe5 e6 15.Qd2 Kh7 16.Rf2 f6  
17.exf6 Rxf6 18.Raf1 Rxf2 19.Qxf2 Bd7 20.Qf7  
Qe8 21.e5 Rd8 22.Bc1 Qxf7 23.Rxf7 Kg8 24.Rf2  
Rf8 25.Ba3 Rxf2 26.Kxf2 Bf8 27.Bxf8 Kxf8 28.Ke3  
Ke7 29.Kd3 b6 30.Kc4 Be8 31.Kb4 Kd7 32.c4 Bf7  
33.c5 Kc7 34.a4 g5 35.Bf1 Bg6 36.Bh3 Bf7  
37.cxb6+ axb6 38.a5 bxa5+ 39.Kxa5 Kb7 40.Bg4  
h5 41.Bf3 g4 42.Be4 Kc7 43.Ka6 Be8 44.Ka7 Bf7  
45.Bh7 c5 46.Ka6 cxd4 47.Kb5 Kd7 48.Kc4 Ke7  
49.Kxd4 Kf8 50.Bd3 Be8 51.Bc4 Kf7 52.Ke4 Bd7  
53.Kf4 Kg6 54.Bd3+ Kh6 55.Bc2 Bc6 56.Bb3 Bd7  
57.Bc4 Kg6 58.Ba6 Kh6 59.Bb7 Kg6 60.Bg2 Kh6

## Scandinavian Defense

Summer Swiss

W: Renzo Herrera (1903)

B: Thomas Rehmeier (1769)

1.e4 d5 2.e5 c5 3.d4  
cxd4 4.Qxd4 Nc6  
5.Bb5 Bf5 6.Bxc6+  
bxc6 7.c4 Bxb1

8.Rxb1 Qa5+ 9.Bd2 Qxa2 10.Rc1 e6 11.cxd5 Qxd5  
12.Nf3 Ne7 13.Bb4 Nf5 14.Qxd5 cxd5 15.Bxf8  
Rxf8 16.Rc7 Kd8 17.Rb7 Kc8 18.Rb3 Kd7 19.g4  
Nh6 20.Rb7+ Kc6 21.Re7 Nxg4 22.0-0 Nxe5  
23.Nxe5+ Kd6 24.Rxf7 Kxe5 25.Rc7 Kf6 26.Rfc1  
Rf7 27.R7c6 Re7 28.R1c3 Rb8 29.Rf3+ Ke5  
30.Rh3 h6 31.Rh5+ Kf4 32.Ra6 e5 33.h3 Rxb2  
34.Kg2 Rb6 35.Ra5 g5 36.Ra4+ d4 37.Rc4 Kf5  
38.Kg3 Rb3+ 39.f3 Re6 40.h4 Kg6 41.Kg4 Rb1  
42.Rxg5+ hxg5 43.h5+ Kh6 44.Rc2 Rf6 0-1

## Sicilian Defense: Maroczy Bind

Summer Swiss

W: Nathaniel Johnson (1116)

B: Mike Kummer (1601)

1.e4 c5 2.Nf3 Nc6  
3.d4 cxd4 4.Nxd4  
g6 5.c4 Bg7 6.Be3  
Qb6 7.Nf5 Qxb2

8.Nxg7+ Qxg7 9.Nd2 Nf6 10.Be2 d6 11.Nb3 Nxe4  
12.Qc1 Qc3+ 13.Qxc3 Nxc3 14.Bf3 Nb4 15.Kd2  
Na4 16.Rhe1 Nb6 17.Kc3 Nc6 18.c5 Na4+ 19.Kd2  
Nxc5 20.Nxc5 dxc5 21.Bxc5 Be6 22.Kc3 Rc8  
23.Rad1 b6 24.Ba3 Bxa2 25.Kb2 Be6 26.Rc1 Na5  
27.Rxc8+ Bxc8 28.Rxe7+ Kd8 29.Rxa7 Nc4+  
30.Kc3 Nxa3 31.Rxa3 Re8 32.Ra7 Re7 33.Ra8 Kc7  
34.Kb4 Bb7 35.Ra7 Kb8 36.Ra3 Bxf3 37.Rxf3 f5  
38.Kb5 Kb7 39.Rd3 Re5+ 40.Kb4 Kc6 41.Rc3+  
Rc5 42.Rh3 Rc2 43.Rxh7 Rxf2 44.g3 f4 45.Rh6 f3  
46.Rxg6+ Kd5 47.Rf6 Kd4 48.h4 Rf1 49.h5 f2  
50.Rf4+ Ke5 51.h6 Rb1+ 52.Kc3 f1Q 53.h7 Rc1+

54.Kb2 Rb1+ 55.Kc3 Qc1+ 56.Kd3 Rb3+ 57.Ke2 Qc2+ 58.Ke1 Rb1# 0-1

**Queen's Gambit Declined**

Summer Swiss

W: Selden Trimble (1935)

B: Henry Cao (1830)

1.d4 d5 2.c4 e6  
3.Nc3 Nf6 4.Bg5  
Be7 5.e3 Nbd7  
6.Nf3 0-0 7.Qc2 b6

8.cxd5 exd5 9.Be2 Bb7 10.0-0 h6 11.Bh4 c5  
12.dxc5 Nxc5 13.Rac1 Nfe4 14.Bxe7 Qxe7 15.Rfd1  
Rfd8 16.Nd4 Rac8 17.Qb1 Nxc3 18.Rxc3 Ne6  
19.Rxc8 Rxc8 20.Bg4 Rc4 21.b3 Rc3 22.Qb2 Rc5  
23.Rc1 Nxd4 24.exd4 Rxc1+ 25.Qxc1 Qe4 26.Qd1  
Kf8 27.Bf3 Qe6 28.Qe2 Ke7 29.Kf1 Qxe2+  
30.Kxe2 Ke6 31.Kd2 a5 32.Be2 Bc6 33.a3 g5 34.g3  
f6 35.Bd3 Be8 36.Kc3 Kd6 37.b4 ½-½

**Closed Sicilian**

Summer Swiss

W: Jialin Ding (1601)

B: Dan Juengel (1906)

1.e4 c5 2.Nc3 Nc6  
3.g3 g6 4.d3 Bg7  
5.Bg2 e6 6.f4 Nge7  
7.Be3 b6 8.e5 d6

9.exd6 Qxd6 10.Nf3 Bb7 11.Qd2 a6 12.a4 0-0 13.0-0  
Nf5 14.Bf2 Qc7 15.Rab1 Rad8 16.Qe2 Rfe8  
17.Rfe1 Ncd4 18.Nxd4 Nxd4 19.Bxd4 Bxd4+  
20.Kh1 Bc6 21.Bxc6 Qxc6+ 22.Qe4 Qd6 23.Qf3 f5  
24.Re2 Re7 25.Rbe1 Kf7 26.g4 Rde8 27.Kg2 Qd7  
28.gxf5 exf5 29.Qd5+ Qxd5+ 0-1

**Caro Kann**

Summer Swiss

W: Dennis Humphries (1734)

B: Richard Fox (1467)

1.d4 c6 2.Nc3 g6  
3.e4 d5 4.Nf3 dxe4  
5.Nxe4 Bg7 6.c3  
Bf5 7.Ng3 Bd7

8.Bc4 b5 9.Bb3 Nf6 10.0-0 Bg4 11.h3 Bd7 12.Ne5  
0-0 13.f4 Qc8 14.Nxd7 Nbx7 15.Qe2 e6 16.Ne4  
Qc7 17.g4 Rfe8 18.Qf3 Nd5 19.f5 e5 20.fxg6 fxg6  
21.Bxd5+ cxd5 22.Qf7+ Kh8 23.Nc5 exd4 24.Ne6  
Qg3+ 25.Kh1 Qxh3+ 26.Kg1 Qxg4+ 27.Kh1 Qxe6  
Draw Agreed

**Sicilian, Bb5 Lines**

Summer Swiss

W: Bob Howe (1622)

B: Michael Kummer (1620)

1.e4 c5 2.Nf3 Nc6  
3.Bb5 Qb6 4.Bxc6  
Qxc6 5.d3 d6 6.0-0  
Bg4 7.h3 Bh5 8.g4

Bg6 9.Nh4 Nf6 10.f4 h5 11.g5 Nd7 12.f5 Bh7  
13.Qxh5 0-0-0 14.Ng6!! fxg6 15.fxg6 Bxg6 16.  
Qxh8 Bxe4!! 17.dxe4 Qxe4 18.Qh5 Ne5 19.Nd2  
Qd4+ 20.Rf2 g6 21.Qe2 Bg7 22.c3 Qh4 23.Qe4  
Qxh3 24.Qg2 Qe6 25.Nf3 Ng4 26.Re2 Qd7 27.Bf4  
Rf8 28.Bg3 Qf5 29.Rxe7 Qxf3 30.Rxg7 Qe3+ 31.  
Bf2 Qxf2+ 32.Qxf2 Nxf2 33.Rxg6 Rf5 34.Kg2 Ne4  
35.Rg8+ Kd7 36.Rg7+ Kc6 37.g6 Nf6 38.Rf7?  
Rg5+ 39.Kf2 Rxg6 40.Ke3 Nd5+ 41.Ke4 Rg2 42.c4  
Rg4+ 43.Kd3 Rd4+ 44.Ke2 Rxc4 45.Rd1 Rc2+  
46.Rd2 Rxd2+ 47.Kxd2 a5 48.Rf8 b5 49.Rc8+ Kb6

50.Rb8+ Kc6 51.a3 a4 52.Rc8+ Kb6 53.Kd3 b4  
54.Ke4 bxa3! 55.bxa3 Nc3+ 56.Kd3 Nb1?? 57.  
Rb8+ Kc6 58.Rxb1 d5 59.Rh1 Kb5 60.Rh8 Kc6  
61.Rc8+ Kb6 62.Rd8 d4 63.Kc4 d3 64.Rxd3 Kc6  
65.Rd5 Kb6 66.Rxc5 Kb7 67.Kd5 Kb6 68.Kd6  
Kb7 69.Rb5+ Ka6 70.Kc6 Ka7 71.Rb4 Ka8 72.Kc7  
Ka7 73.Rxa4# 1-0

**Reti Opening**

STL Sweet Summer Swiss

W: James Doran (700)

B: Tim Nesham (1764)

1.Nf3 Nf6 2.Nc3 b6  
3.e3 Bb7 4.Be2 d6  
5.0-0 e5 6.Ng5 h6  
7.Nxf7 Kxf7 8.Bc4+

d5 9.Be2 Bb4 10.Re1 Re8 11.d3 Bxc3 12.bxc3  
Nbd7 13.Bf3 e4 14.Bh5+ Nxh5 15.Qxh5+ Kg8  
16.Qe2 Ne5 17.Ba3 Qf6 18.d4 Nf7 19.Rf1 h5 20.f4  
Ba6 21.c4 Bxc4 22.Qf2 Bxf1 23.Qxf1 Nd6 24.Qe2  
Rac8 25.c3 Nc4 26.Bc1 c5 27.Rb1 cxd4 28.cxd4  
Rc6 29.Rb5 Qd6 30.Rb3 Rec8 31.Rc3 b5 32.Rb3  
b4 33.Rb1 Na3 34.Qf2 Rxc1+ 0-1

**Queen's Gambit Accepted**

Summer Swiss

W: Doug Howe (1532)

B: Chris Haberstroh (675)

1.d4 d5 2.c4 dxc4  
3.Nc3 Nc6 4.d5 Ne5  
5.e4 Nf6 6.f4 Neg4  
7.h3 Nh6 8.Bxc4 e6

9.Qa4+ Qd7 10.Bb5 exd5 11.Bxd7+ Bxd7 12.Qd4  
c5 13.Qe5+ Be6 14.exd5 0-0-0 15.dxe6 fxe6 16.Nb5  
Ne8 17.Nxa7+ Kd7 18.Be3 Ra8 19.0-0-0+ Bd6  
20.Nb5 Nf7 21.Qe4 Nc7 22.Qxb7 Rab8 23.Qxc7+  
Ke8 24.Nxd6+ Nxd6 25.Qxb8+ Kf7 26.Qxh8 Ne8  
27.Rd7+ Kg6 28.Qxe8+ Kf5 29.g4+ Ke4 30.Qxe6#

**London System**

Summer Swiss

W: Brian Gadson (UNR)

B: Jialin Ding (1681)

1.d4 Nf6 2.Bf4 d6  
3.Nf3 g6 4.e3 Bg7  
5.Bd3 Nbd7 6.Nbd2  
c5 7.c3 Nb6 8.Qc2

cx4 9.cxd4 Bd7 10.0-0 0-0 11.Ne4 Rc8 12.Nxf6+  
Bxf6 13.Qb3 Be6 14.d5 Bxd5 15.Qd1 Be6 16.Nd4  
Bxd4 17.exd4 Nd5 18.Bh6 Re8 19.f4 Nb4 20.f5  
Bd7 21.fxg6 hxg6 22.Qf3 Be6 23.Bb5 Qb6 24.Bxe8  
Rxe8 25.a3 Qxd4+ 26.Be3 Qxb2 27.axb4 Qxb4  
28.Rxa7 b5 29.Ra8 Rxa8 30.Qxa8+ Kg7 31.Qa1+  
Kg8 32.Rb1 Qc4 33.Rc1 Qb3 34.Bh6 f6 35.Qa8+  
Kh7 36.Qf8 1-0

**Caro-Kann Defense**

Summer Swiss

W: Peter Harris (1359)

B: Joshua Wiedner (940)

1.d4 d5 2.c4 dxc4  
3.e3 Nc6 4.Bxc4 e5  
5.Nf3 e4 6.Nfd2 Nf6  
7.Nc3 Bb4 8.0-0

Ng4 9.Ndxe4 Qh4 10.h3 Nf6 11.Nxf6+ Qxf6  
12.Nd5 Qe6 13.e4 0-0 14.Bf4 Qg6 15.Bg3 a6  
16.Nxc7 Ra7 17.d5 Ne7 18.Qd4 b6 19.e5 Rxc7  
20.e6 Bc5 21.exf7+ Rxf7 22.Qd2 Bxf2+ 23.Rxf2



Rxc4 24.Rxf7 Qxf7 25.Rf1 Qxd5 26.Qe2 Re4  
 27.Qf3 Ng6 28.Rd1 Qf5 29.Rd8+ Nf8 30.Rxc8  
 Qxc8 31.Qxe4 Qc1+ 32.Kh2 Qxb2 33.Qc4+ Kh8  
 34.Qf7 Qa3 35.Be5 Ne6 36.Qxe6 Qf8 37.Qxb6 Qc8  
 38.Qb8 Qxb8 39.Bxb8 a5 40.a4 Kg8 41.Bc7 Kf8  
 42.Bxa5 Ke7 43.Bd2 Kd6 44.Kg3 Kc5 45.a5 Kb5  
 46.Kf4 Kc6 47.Ke5 Kd7 48.a6 Kc7 49.a7 Kb7  
 50.Ke6 Kxa7 51.Kf7 Kb7 52.Kxg7 Kc7 53.Kxh7  
 Kd7 54.Kg7 Ke7 55.h4 Ke6 56.h5 Kf5 57.h6 Ke5  
 58.h7 Ke4 59.h8Q 1-0

**Closed Sicilian**

Summer Swiss

W: Richard Fox (1367)

B: William Thompson (1554)

1.e4 c5 2.Nc3 g6

3.f4 Nc6 4.Nf3 Bg7

5.Bb5 Nd4 6.0-0

Nxb5 7.Nxb5 a6

8.Nc3 e6 9.e5 b5 10.d4 Bb7 11.dxc5 Rc8 12.b4 Ne7  
 13.Be3 Nd5 14.Nxd5 Bxd5 15.a4 bxa4 16.Qd3 Bc6  
 17.Qxa6 Ra8 18.Qd3 Qb8 19.Bd2 Qa7 20.c4 a3  
 21.Nd4 0-0 22.Nb3 d5 23.exd6 Bxa1 24.Rxa1 Qb7  
 25.Qe2 Ra4 26.Na5 Rxa5 27.bxa5 Qb2 28.Qe1 a2  
 29.Kf1 Rb8 30.g3 Qxa1 31.Bc3 Qxe1+ 32.Kxe1  
 Rb1+ 33.Kd2 a1Q 34.Bxa1 Rxa1 35.Kd3 Rxa5  
 36.Kd4 Kf8 37.g4 Kg7 38.h4 Kf6 39.h5 gxh5  
 40.gxh5 Kf5 0-1

**French Exchange**

Summer Swiss

W: Renzo Herrera (1903)

B: William Wright (1401)

1.e4 e6 2.c4 c6 3.d4

d5 4.exd5 exd5

5.Nc3 Nf6 6.Nf3

Be7 7.c5 0-0 8.h3

Re8 9.Be3 Nbd7 10.Bd3 b6 11.b4 Bf8 12.0-0 Ne4  
 13.Bxe4 dxe4 14.Nd2 f5 15.Nc4 Qc7 16.Ne2 Kh8  
 17.Bf4 Qd8 18.Ng3 Nf6 19.Ne5 Qd5 20.Qb3 g6  
 21.Qxd5 Nxd5 22.Bd2 Bb7 23.Ne2 Bg7 24.Nf7+  
 Kg8 25.Nd6 Re7 26.Nxb7 Rxb7 27.Rab1 Re8 28.  
 Be3 Rf7 29.g3 Ref8 30.b5 Nxe3 31.fxe3 Rc7 32.Nf4  
 Re8 33.d5 cxd5 34.c6 d4 35.exd4 Bxd4+ 36.Kg2  
 Re5 37.Rfd1 Bc5 38.Rd8+ Kg7 39.Rbd1 e3 40.  
 R8d7+ Re7 41.Rxc7 g5 42.Rxe7+ Bxe7 43.c7 1-0

**Sicilian Dragon**

STL Sweet Summer Swiss

W: Craig Hartmann (1303)

B: Nathaniel Johnson (1116)

1.e4 c5 2.Bc4 Nc6

3.Nf3 Nf6 4.Nc3 g6

5.d4 cxd4 6.Nxd4

Bg7 7.Bf4 d6

8.Nxc6 bxc6 9.e5 Nh5 10.Be3 Bxe5 11.Bd4 Bxd4  
 12.Qxd4 0-0 13.0-0-0 Qb6 14.Qxb6 axb6 15.Kb1  
 Nf6 16.b3 Ba6 17.Bxa6 Rxa6 18.f3 b5 19.Rhe1  
 Ra7 20.g4 h6 21.h4 Rfa8 22.b4 Nd5 23.Kb2 Nxb4  
 24.Ra1 Na6 25.a3 Nc5 26.Re3 Ne6 27.Ne2 b4 28.f4  
 bxa3+ 29.Raxa3 Rxa3 30.Rxa3 Rxa3 31.Kxa3 c5  
 32.Kb3 Kg7 33.Kc4 Kf6 34.Kd5 Nd4 35.Nxd4  
 cxd4 36.Kxd4 e6 37.c4 g5 38.h5 gxf4 39.Ke4 d5+

40.Kxf4 dxc4 41.Ke3 Kg5 42.Kd4 Kxg4 43.Kxc4  
 f5 44.Kd4 f4 45.Ke4 Kg3 0-1

**French Defense**

Summer Swiss

W: Stephen Zhang (1137)

B: Steve Bange (1843)

1.d4 Nf6 2.c4 e5

3.e3 exd4 4.exd4

d5 5.Nc3 c6 6.Bf4

Be7 7.c5 0-0 8.Nf3

Re8 9.Be2 Bf5 10.0-0 Nbd7 11.Re1 Ne4 12.Bd3  
 Ndf6 13.Bxe4 Nxe4 14.Nxe4 Bxe4 15.Ne5 Bg5  
 16.Qh5 Rxe5 17.Bxe5 g6 18.Qg4 Bf5 19.Qf3 Qd7  
 20.Qg3 Be7 21.Re3 Be6 22.Rae1 Rc8 23.h4 h5  
 24.Qf4 Bf8 25.Qf6 1-0

**Scandinavian Gambit**

Summer Swiss

W: Michael Kummer (1601)

B: Peter Harris (1359)

1.e4 d5 2.exd5 Nf6

3.c4 c6 4.dxc6

Nxc6 5.Nf3 e5 6.d3

Bc5 7.Be3 Bxe3

8.fxe3 Qb6 9.Qd2 Ng4 10.d4 exd4 11.exd4 0-0  
 12.Be2 Re8 13.0-0 Bf5 14.c5 Qc7 15.Nc3 Be4  
 16.Nb5 Qe7 17.Nd6 Red8 18.Ng5 Nf6 19.Ngxf7  
 Rf8 20.Bc4 Bd5 21.Bxd5 Nxd5 22.Rae1 Qd7  
 23.Qg5 Nf6 24.Rxf6 Nxd4 25.Nh6+ Kh8 26.Ndf7+  
 Rxf7 27.Rxf7 Ne2+ 28.Kh1 Qd4 29.Nf5 Qxb2  
 30.Rxg7 Rf8 31.Qh6 1-0

**Ponziani Opening**

Summer Swiss

W: Matthew Barrett (1824)

B: Dan Roberts (1754)

1.e4 Nf6 2.d3 e5

3.Nf3 Nc6 4.Nbd2

Bc5 5.h3 0-0 6.Be2

Re8 7.Nb3 Bb6

8.Bg5 h6 9.Bh4 a5 10.Qd2 a4 11.Nc1 Nd4 12.c3 c6  
 13.0-0 Nxf3+ 14.Bxf3 g5 15.Bg3 d5 16.Rd1 Kh7  
 17.Qe2 d4 18.Bh5 Qe7 19.cxd4 Bxd4 20.Qf3 a3  
 21.Nb3 axb2 22.Rab1 Rxa2 23.Nxd4 exd4 24.e5  
 Nxb5 25.Qxb5 Bf5 26.f4 Bg6 27.Qf3 Qe6 28.Bf2  
 c5 29.Qxb7 gxf4 30.Rxb2 Ra3 31.Rb6 Qxe5  
 32.Re1 Qh8 33.Re7 Qf8 34.Bh4 Rxe7 35.Bxe7  
 Qe8 36.Rxg6 Kxg6 37.Qe4+ f5 38.Qe6+ Kh7  
 39.Qxf5+ Qg6 40.Qxg6+ Kxg6 41.Bxc5 Rxd3  
 42.Kf2 Kf5 43.Bf8 h5 44.Bb4 Rb3 0-1

**Sicilian Defense: Four Knights**

Summer Swiss

W: Ken West (1231)

B: Vishal Bharadwaj (1037)

1.e4 c5 2.Nf3 e6

3.d4 cxd4 4.Nxd4

Nc6 5.Nc3 Be7

6.Be3 Nf6 7.Be2 0-

0 8.Qd2 Bb4 9.f3 d5 10.Bg5 dxe4 11.Bxf6 gxf6  
 12.Nxc6 Qxd2+ 13.Kxd2 bxc6 14.fxe4 Rd8+  
 15.Ke3 Bc5+ 16.Kf3 e5 17.Rad1 Be6 18.a3 Kh8  
 19.b4 Bd4 20.Na4 h5 21.c3 Bg4+ 22.Kg3 Bxe2  
 23.Rxd4 exd4 24.cxd4 Rxd4 25.Re1 Rxe4 26.Nc5  
 Rg8+ 27.Kf2 Reg4 28.Kxe2 Rxe2+ 29.Kd3 Rxh2  
 30.Nd7 Rg3+ 31.Kc4 Rc2+ 32.Kd4 Rd2+ 33.Kc5  
 Rxd7 34.Kxc6 0-1

The Missouri Chess Bulletin Needs Your Games!!

Submit your latest over the board masterpiece (or any other interesting battle) to [bdhowe@yahoo.com](mailto:bdhowe@yahoo.com).



# Membership & Subscriptions

A one-year membership in the Missouri Chess Association includes a subscription to the quarterly *Missouri Chess Bulletin* chess publication, available in electronic or hard-copy, as well as eligibility to play in MCA-sponsored tournaments, including State Championship titled events.

<b>MEMBERSHIP OPTIONS</b>	<b>COST (1 YR)</b>
<b>Regular</b> <i>Ages 25+; Includes hard-copy MCB.</i>	\$12.00
<b>Scholastic</b> <i>Under 25; Includes hard-copy MCB.</i>	\$8.00
<b>Electronic (Economy)</b> <i>Provides online MCB access. **Email address required.</i>	\$5.00
<b>Family</b> <i>2 Adults &amp; children under 25 Provides one hard-copy MCB.</i>	\$18.00
<b>Scholastic Family</b> <i>All children under 25.</i>	\$12.00

If you would like to join the MCA, please fill out a membership form (*available at [mochess.org](http://mochess.org)*) and mail it along with dues to the MCA Membership Coordinator:

**Nathaniel Fast**  
**630 Broadway**  
**Jefferson City, MO 65101**  
*<[nathanielfast@yahoo.com](mailto:nathanielfast@yahoo.com)>*

Be sure to include your E-mail address to receive tournament announcements and notices when the new issue of the MCB is released.

For more information, please visit *<http://www.mochess.org/>* and click the Join Us' link.

### Support The MCA!

Please check your MCA membership expiration date. If it will expire within a few months, renew today. We hope you appreciate the MCA and its website at [www.mochess.org](http://www.mochess.org). The printed MCB is sent to current Members for only \$12, and all other Members can view the MCB online at [www.mochess.org](http://www.mochess.org) for only \$5.

## MCA BOARD OF DIRECTORS & OFFICERS 2008-2009

### REGION 1—SAINT LOUIS

**Edward C. Baur:** 7138 Lindenwood, St. Louis, MO 63109. 314-645-2897.

*<[ecbaur@gmail.com](mailto:ecbaur@gmail.com)>*

**John F. Wiedner (Secretary):** 12545 Olive Blvd. #254, Creve Coeur, MO 63141. 314-952-4183.

*<[jfwiedner@medsys.net](mailto:jfwiedner@medsys.net)>*

**William H. Wright (Treasurer):** 449 W Jefferson Ave. Apt B, St. Louis, MO 63122. 314-822-5334.

*<[chesswright@charter.net](mailto:chesswright@charter.net)>*

### REGION 2—KANSAS CITY

**Bob Holliman:** P.O. Box 1871, Independence, MO 64055. 816-836-0568.

*<[chess\\_entries@comcast.net](mailto:chess_entries@comcast.net)>*

**Ronald Luther:** 5205 Country Side Lane, Blue Springs, MO 64015.

816-769-9576. *<[kcmaster@sbcglobal.com](mailto:kcmaster@sbcglobal.com)>*

**John Sutton (Vice President),** 3608 Randall Drive, Independence, MO 64055.

816-478-3946. *<[jsutton@indep.k12.mo.us](mailto:jsutton@indep.k12.mo.us)>*

### REGION 3—REST OF STATE

**Timothy V. Campbell:** 6104 E. Sharon Lane, Columbia, MO 65202. 573-696-0082.

*<[TRJCamp@aol.com](mailto:TRJCamp@aol.com)>*

**Bob Howe:** 4403 Gage Place, Columbia, MO 65203. 573-445-5458.

*<[bdhowe@yahoo.com](mailto:bdhowe@yahoo.com)>*

**Thomas R. Rehmeier (President):** 5217 Denice Street, Jefferson City, MO 65109. 573-291-0852.

*<[T.Rehmeier@yahoo.com](mailto:T.Rehmeier@yahoo.com)>*



# Missouri State Champions



**9-Time Missouri State Champion**  
Life Master Ronald G. Luther



**MO Open Champion**  
LM Bob Holliman



**Reserve Champion**  
Jialin Ding



**Quick Champion**  
Kevin Cao



**Blitz Champion**  
LM Ronald Luther



**Bughouse Champions**  
Kevin & Henry Cao



**Denker Champion**  
Frank H. Smith



**Polgar Champion**  
Joanna Gossell

## 2008 Class Champions

**Master/Exp** Ronald G. Luther  
Kevin Dale Johnson

**Class A** Daniel R. Huff

**Class B** Timothy C. Nesham

**Class C** Cody B. Ruggles

**Class D** Tim V. Campbell  
Stephen G. Easton

**Class E** Austin Madenwald

**Novice** Ashwath S. Kumar

## HS Championship Team

Parkway Central High School  
(Second in a row)

For a complete history of Missouri Champions, visit [www.mochess.org](http://www.mochess.org) & click the Champions Link.

# Missouri Chess Hall of Fame



*Mr. James H. Davies*  
*Inducted: 2000*



*Mr. Donald Oswald*  
*Inducted: 2001*



*Mr. Robert M. Jacobs*  
*Inducted: 2002*



*Mr. Michael A. Brooks*  
*Inducted: 2003*

*Chess, like any creative activity,  
can exist only through the combined  
efforts of those who have creative  
talent, and those who have the  
ability to organize their creative  
work.*

*-Mikhail Botvinnik*



*Mr. Robert H. Steinmeyer*  
*Inducted: 2006*



---

**Missouri Chess Association**  
**Bulletin Editor**  
4403 Gage Place  
Columbia, MO 65203