



# MISSOURI CHESS BULLETIN

[www.mochess.org](http://www.mochess.org)

## LOAL DAVIS WINS KC MASTERS



TD Ken Fee (left) presents a check to winner Loal Davis.

Volume 34 Number One—Winter 2007 Issue

*Serving Missouri Chess Since 1973*

# 2006-2007 MCA Officers and Board of Directors

## Region 1 (St. Louis)

Treasurer William H. Wright, 449 W. Jefferson Ave., Apt. B, St. Louis, MO 63122  
Ed Baur, 7138 Lindenwood, St. Louis, MO 63109

Vice President Tony Rich, 6423 Towne Wood Drive, St. Louis, MO 63017

## Region 2 (Kansas City)

President Ken Fee, Jr., 1537 Baker, Liberty, MO 64068

Secretary Wayne Bartlett, P.O. Box 417, Oak Grove, MO 64075  
Bryon McLaughlin, 836 NE Colleen Drive, Lee's Summit, MO 64086

## Region 3 (Rest of State)

Bob Howe, 4403 Gage Place, Columbia, MO 65203

Thomas Rehmeier, 5217 Denice Street, Jefferson City, MO 65109

Mike Clark, 1499 Summit View Drive, Holts Summit, MO 65043

## Membership and Subscriptions

The Missouri Chess Bulletin is the official quarterly publication of the Missouri Chess Association. MCA membership includes a subscription to the MCB. E-members receive their MCB via the internet (no printed copy). Include e-mail address with dues.

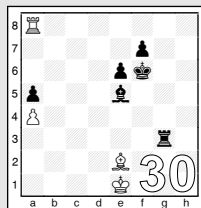
	Annual Membership Rates
Regular	\$12
E-Member	\$5
Scholastic	\$8
Affiliate	\$10
Patron	\$25

**Please send address changes and memberships to  
Wayne Bartlett, P.O. Box 417, Oak Grove, MO 64075**

*Layout and design by Ken Fee and Bryon McLaughlin*

# MISSOURI CHESS - Winter 2007

- 3** Missouri Champions and Ratings
- 4** **From the Editor**  
*Ken Fee*
- 6** **Missouri Scholastic K-12 Report**  
*Ken Fee*
- 8** **Spotlight on Missouri Chess:**  
Kevin & Henry Cao  
*Steve Goldberg*
- 10** **Fighting Spirit**  
*Tony Dutiel*
- 14** **Loal Davis Wins 2007 KC Masters**  
*Ken Fee*
- 21** Crosstables for Missouri  
Marshall, Play for Rating, Quick Cash,  
Christmas Tree Championships
- 25** **From the Pawn Shop: A Look at the World Championship**  
*Loal Davis*
- 30** **Games from Missouri Players**
- 32** Regional Chess Clubs
- 33** Missouri Tournament Life



## CALENDAR FOR MCB ARTICLE AND GAME SUBMISSIONS.

MCB Issue	Winter	Spring	Summer	Fall
Deadline for Articles	December 1	March 1	June 1	September 1
Publication Date	January 15	April 15	July 15	October 15

Note: Please send articles in Microsoft Word and Games in Chessbase or PGN format. Submissions go to Ken Fee, editor, at <chessclub@powerpawn.net>.

***“Only with endgame knowledge can one have chess understanding.”***  
**—Yasser Seirawan**



## MISSOURI TOP 50

Rank	Name	Current/Upcoming Published Rating
1.	MICHAEL A. BROOKS	2438
2.	CHARLES LAWTON	2363
3.	KENNETH E. JONES	2304
4.	BART F GIBBONS	2260
5.	RONALD LUTHER	2243
6.	LOAL W. DAVIS	2200
7.	JAMES S. ELLIS	2200
8.	THOMAS G. GOSSELL	2190
9.	KENNETH P. THOMAS	2162
10.	ANDREW J. WITTE	2159
11.	BOB HOLLIMAN	2120
12.	JAMES F. MCLAUGHLIN	2119
13.	JAMES R. VOELKER	2115
14.	ROBERT M. JACOBS	2100
15.	ZEBEDEE FORTMAN	2057
16.	GARY MICHAEL WHITE	2057
17.	WALDO ODAK	2038
18.	JAMES A. DAVIES	2019
19.	KEVIN DALE JOHNSON	2000
20.	DANIEL R. HUFF	1980
21.	STEVEN D. BANGE	1947
22.	DWIGHT BEASLEY	1938
23.	GARY FREEMAN	1920
24.	DANIEL A. JUENGENEL	1917
25.	MARK T. SMITH	1907
26.	SELDEN TRIMBLE	1906
27.	FRANCIS CROW	1906
28.	ZEBEDEE FORTMAN, Jr.	1900
29.	KEVIN GUO	1900
30.	MARK A COGLEY	1892
31.	NATHANIEL S. FAST	1876
32.	TIM B BLACO	1876
33.	ALEX J. MARLER	1853
34.	RAYMOND J BIRT	1836
35.	DANIEL J. CORYEA	1833
36.	KENNETH E FEE JR	1829
37.	STEVE SAIDI	1823
38.	TONY DUTIEL	1810
39.	JOSEPH A. GARNIER	1802
40.	STEPHEN R. LANDRUM	1800
41.	ALBERT D. HOWLETT	1794
42.	WAYDE STALLMANN	1791
43.	NATHANAEL D. SWINGER	1791
44.	DANIEL O. ROBERTS	1786
45.	BEHROOZ M VAKIL	1780
46.	CHRIS A. HUNT	1774
47.	JIM POAGE	1771
48.	ROGER W. SMITH	1767
49.	WILLIAM STARNES	1758
50.	JAMES V. STAUDT	1753

To be eligible for the Missouri Top 50 List, a player must be a current tournament player. Current as of this printing is the 2005 through 2007 USCF Rating List.

# Missouri Champions

## 2006 MO State & Quick Champion Ron Luther



## 2006 MO Champions Open Champion

Francis Crow

## Reserve Champion

Nick Manley

## Blitz Champion

Kevin Cao

## Bughouse Champions

Tony Dutiel & Frank Chressanthis

## 2006 MO Class Champions

Master/Expert -- Michael Brooks

Class A -- Tony Song

Class B -- Tony Rich

Class C -- Shan Siddiqi

Class D -- Vikram Arun

Class E -- Dan Laurila

Class F -- Tyler Harris



**2006 MO HS State  
Champion**  
Kevin Guo  
Denker Champion



**2006 MO HS State  
Champion**  
Katy Mueller  
Polgar Champion

## 2006 MO HS Team Champion Vianney HS - St. Louis, MO

# FROM THE EDITOR by Ken Fee, Jr.

E-mail Ken at [chessclub@powerpawn.net](mailto:chessclub@powerpawn.net), or visit [www.powerpawn.net](http://www.powerpawn.net)



Much was made about my comments in the 2006 MCB concerning the Brooks-Jones game from the 2006 Missouri Invitational. I described the ten-move game with the statement, "The lack of fighting chess was portrayed."

I apologize to IM Brooks and Ken Jones. My intent was just to describe what happened. Interesting enough, I received two letters about the topic.

---

## Letters to the Editor

Dear Ken,

As a very recent member of the MCA (having joined at the Missouri Open where Tony Dutiell and I competed in and won the Bughouse Championship) I would like to say that the tournament I participated in was well organized, had plenty of room and was well lit. I also enjoy the ability to read the MCB on-line.

The reason for this letter is I read with concern the public accusation of 'lack of fighting chess' (page 8 in the Fall 2006 edition) in the Michael Brooks-Ken Jones game at the Missouri Invitational last September. I believe the MCA bulletin is not the place for personal accusations of this type, especially since no rules were broken. The MCA Chess Bulletin is to help promote chess in Missouri. I'm sure you believe as I do that there was no collusion between the players as both players have been past champions. Both players were doing what they thought was in their own best interest at the time to give them the best chance to win the tournament. The draw was offered and accepted in the spirit of the game and the tournament.

Sincerely,

Frank A. Chressanthis - Kansas City

Dear Ken,

It has been mentioned by some players down at the Westport Chess Club that Ken Fee's editorial comments about there being a lack of "fighting chess" at the Missouri State Championships was understood to be insensitive and perhaps rude.

I understood the article very well and perspective that Mr. Fee took as editor and TD of that event. It was neither accusatory nor inflammatory by linguistic standards nor was it directed at any one individual. The same could be said of Ken Jones (and it was!) of how being up a pawn against Luther with a sustainable advantage disintegrated due to his inclination to coast to a draw (a not uncommon circumstance in master level chess). Further still, it could be used to describe the sheepish, rope-a-dope style of Bob Holliman who lost in 19 moves to Luther or 17 moves to Brooks. It was merely a comment or as simple as an observation, but I don't recall Mr. Fee directing that comment at any one particular player. For instance, calling a spade... a spade. Mr. Fee did not imply whatsoever that any rules were broken.

On the contrary, Mr. Fee is perhaps a lone crusader in his attempts to help promote chess in Missouri and just a small example is how nice a publication you have in your hands. I can assure you that as I live on the Kansas side, the *MCB* is 100-fold better than our *Plains Chess*. Mr. Fee also did not write or imply there was any collusion between any of the players. The structure of the prize disbursement should have guaranteed this and I think did so beautifully. I think Mr. Fee wholeheartedly believes that draws are part of the game and are sometimes a logical conclusion but usually these draws occur somewhere in the late middlegame or endgame, not within 10 moves, especially with a theory laden opening as the Sveshnikov Sicilian.

Seeing as how this letter was initiated through the Westport Club as that is where IM Brooks resides, I can only assume that the player who felt slighted was IM Brooks. As a weaker Expert, I frequently have to fight and accept draws against my competition just for respectability's sake. I seldom win tournaments with draws. However, if I were IM Brooks, with his experience and credentials, I would not feel comfortable drawing important games and expecting to win 1st place. I am also taking into account his age and the fact he has been removed from the active chess circuit. However, age should not be an issue here as there are many super strong GM's that play well into past-prime age (e.g. Korchnoi).

I think the real issue here is that on certain games that draws occurred, it dramatically affected how players would finish for the top prize. If anyone keeps up on their chess, one would realize that this is a frequent discussion at professional chess. Articles (on chess-

base.com) have been written on how much Peter Leko draws and how it severely restricts his ability to win major European events. Articles have been written by organizers about how frequent "Grandmaster draws" occur and how that impacts the organizer's ability to showcase talent and seek new and more sponsorship; a valid claim in my mind.

Is it no wonder the richest chess tournament in the US, the HB Global last year had a very specific rule about no draws before move 30. They have ranged from articles that state how poor chess professionals are and how they "must" draw just to guarantee a minimum of an income. Topics range from how certain styles like those of Kasparov and Topalov make for exciting chess. Is it any wonder these two are very skilled at winning tournaments? What about the sponsor of the Linares super-tournament? They require "fighting chess" or you will not be invited back the following year. You may even look at the most recent article <http://www.chessbase.com/newsdetail.asp?newsid=3528> which a skilled professional statistically claims that draws will hurt your chances to win events.

Go figure! Stopping at move 10 certainly does not go very far claiming that you did everything possible to try and win an event.

Tim Steiner - Kansas City  
Westport Chess Club member

**Happy New Year and Good Chess,**

Ken Fee  
Editor, *Missouri Chess Bulletin*



# MISSOURI SCHOLASTIC K-12 REPORT

## 2006 K-12 State Championship

Reported by Ken Fee, Tournament Director

The 2006 Missouri Scholastic Championship was held on November 4th, 2006 in Columbia, Missouri at the Holliday Inn. 138 players participated from throughout Missouri. The following individuals and teams won state titles.

### Individual State Champions

Kindergarten - ADRIAN CASTANER  
First Grade - NICHOLAS PALLOTTO  
Second Grade - HANS CHAN  
Third Grade - JOSHUA WIEDNER  
Fourth Grade - SAMUAEL STEPHENS  
Fifth Grade - SARAH SAMPEI  
Sixth Grade - VIKRAM ARUN  
Seventh Grade - KYLE MURPHY  
Eighth Grade - ARJUN KHURANA  
Ninth Grade - PETER HARRIS  
Tenth Grade - TAYLOR TYRE  
Eleventh Grade - THOMAS REHMEIER  
Twelfth Grade - KYLE SCHWENT

### Team State Champions

Kindergarten Team - CENTRAL CHRISTIAN  
First Grade Team - PEMBROKE HILL  
Second Grade Team - CENTRAL CHRISTIAN  
Third Grade Team - CENTRAL CHRISTIAN  
Fourth Grade Team - CENTRAL CHRISTIAN  
Fifth Grade Team - PEMBROKE HILL SCHOOL  
Sixth Grade Team - CENTRAL CHRISTIAN  
Eighth Grade Team - PLEASANT LEE MIDDLE SCHOOL  
Ninth Grade Team - CROSSROADS COLLEGE PREP  
Tenth Grade Team - WASHINGTON HIGH SCHOOL  
Eleventh Grade Team -AVA HIGH SCHOOL



# PIC PRODUCTS

Personalized, Individualized, Customized Products

Have us make a personalized shirt with your picture, your name, your favorite chess score or position, you name it!

1 or 100 shirts

Order for yourself or to surprise a friend

TDs - order commemorative shirts for your tournaments

Coaches - order for your team or camp

see us at [www.picproducts.net](http://www.picproducts.net)

(314) 908-1181





# SPOTLIGHT ON MISSOURI CHESS:

## KEVIN & HENRY CAO

by Steve Goldberg, e-mail: [scholasticchess@hotmail.com](mailto:scholasticchess@hotmail.com)



For national scholastic tournaments, the U.S. Chess Federation often provides a state-by-state breakdown of the participants. A look at the Missouri tab frequently

includes the Cao brothers Kevin and Henry, of Chesterfield, Missouri.

At the 2006 National K-12/Collegiate championship in Orlando, Florida, Kevin Cao was the only Missouri player in his division and certainly represented Missouri well. He went undefeated and won the 201-player 4th Grade section (on tiebreak points) and also tied for first in the K-6 Blitz championship.

Kevin's older brother Henry also played in this tournament, in the 8th Grade section. Other Missouri players included Arjun Nandy (Grade 5) and Vikram Arunachalam Arun (Grade 6).

Kevin, rated 1705 after the National K-12, is listed as # 14 nationally in his age group in the USCF December rating supplement. He just turned 10 in December and has

only been playing chess for about two years, but has been quite active. Initially he took lessons from Missouri master Loal Davis and has played in rated tournaments every month since his first USCF event in May 2005. He currently spends about one hour daily studying chess, concentrating on working tactics puzzles and playing on the ICC (Internet Chess Club). He also plays at the Shenandoah Valley Elementary Chess Club and in as many local events as possible. In addition to chess, the youngster enjoys various sports, especially soccer.

At the 2005 National K-12, Kevin got a taste of success on the national level. He

finished with a score of  $5\frac{1}{2}/7$  in the Grade 3 division and finished 11th out of 174 players. It apparently served as an excellent training ground, since 2006 was quite a year for young Kevin. In addition to his exploits at the 2006 National K-12 in December, he also won the 2006 Missouri Blitz Championship (his brother finished in second place!) and he was the co-champion of the 5th



Grade and Under division of the 2006 Missouri Junior High/Elementary Chess Championship. Of interest is that in that same tournament, Henry Cao won the 8th Grade and Under section. Kevin's goal is to become a master and he seems to be well on his way.

Kevin shares with us his 6th round game at the 2006 National K-12 tournament, in which he manages to wipe out his higher-ranked opponent's kingside pawns, followed by the same for the queenside pawns. Annotation is by Fritz9:

Spada, Fernando,1805 - Cao, Kevin,1665 [C64], 2006 National K-12/Collegiate Chesterfield (6), 10.12.2006 C64: Ruy Lopez: Classical Defence (3...Bc5) except 4 0-0 Nf6

1.e4 e5 2.Nf3 Nc6 3.Bb5 Bc5 4.0-0 d6 5.c3 Bd7 last book move 6.Re1 h6 Covers g5 [6...Nge7 7.d4 Bb6 8.a4?] 7.d4± exd4 8.cxd4 [Inferior is 8.Nxd4 Qf6?] 8...Bb4 [8...Bb6 9.Nc3±] 9.Bd2 Bxd2 10.Nbxd2 [10.Nfxd2?! Nxd4 11.Bxd7+ Qxd7=] 10...Nge7 11.a3 0-0 12.Rc1 d5 13.b4 [13.exd5 Nxd5 14.Qb3 Nb6±] 13...Bg4 14.exd5 [14.Qc2!? a6 15.Bd3?] 14...Nxd4= [Weaker is 14...Qxd5 15.Rc5 Qd6 16.Qc1?] 15.Be2 [15.Nxd4 Exploits the pin 15...Bxd1] 15...Nxe2+ 16.Qxe2 Nxd5 17.Red1 [17.Qc4 Bxf3 18.Nxf3 Qd6?] 17...Qe7 [17...Qf6!? 18.Qc4 Be6µ] 18.Qxe7= Nxe7 19.Rxc7 Nd5 Black threatens to win material: Nd5xc7 20.Rc5 [20.Rxb7? is inferior since it leads to 20...Bc8 21.Rxa7 Rxa7+] 20...Rad8 21.h3 White threatens to win

material: h3xg4 21...Bh5 22.g4 Bg6 23.Ne5 Nf4 24.Nxg6? [24.h4³ and White can hope to live] 24...fxg6-+ [24...Nxg6?! 25.a4µ] 25.Rc2?? the position was bad, and this mistake simply hastens the end [25.f3-+] 25...Nxb3+ 26.Kg2 Nxf2 [26...Rxf2+ and Black takes home the point 27.Kh1 Re2-+] 27.Re1 Nxg4 28.Re7 [28.Ne4 Rfe8 29.Kg3 h5-+] 28...Rf7 [28...Rf2+ makes it even easier for Black 29.Kg3 h5 30.Rcc7 Rd3+ 31.Kh4-+] 29.Rxf7 Ne3+ [29...Kxf7?! 30.Rc7+ Kf6 31.Nf1-+] 30.Kf3 [30.Kg1 doesn't improve anything 30...Nxc2 (30...Kxf7?! 31.Rc7+ Kg8 32.Ne4-+) 31.Rxb7 Rxd2 32.Rxa7 Rd1+ 33.Kf2 Rb1-+] 30...Nxc2 31.Rxb7 Rxd2 32.Rxa7 Rd3+ 33.Ke4 [33.Kf2 doesn't do any good 33...Rxa3 34.Ra5 Rb3-+] 33...Rxa3 34.Rb7 [34.Rxa3 hardly improves anything 34...Nxa3 35.Kf4 g5+ 36.Kg4 Kf7-+] 34...Ra4 35.Kd5 [35.Kf3 is not much help 35...Rxb4 36.Rc7 Nd4+ 37.Kg2 g5-+] 35...Rxb4 [35...Rxb4 36.Re7 Rf4-+] 0-1  
Diagram - Final Position



# FIGHTING SPIRIT

BY TONY DUTIEL

Even the very best chess players make obvious mistakes occasionally. I am no exception to that. I have, in many tournament games, simply dropped material. It is how players react to such blunders that separates the strong from the herd. I have observed some players get very down on themselves after such a blunder and basically either resign right away, or just make a bunch of thoughtless moves while simply waiting for their opponent to make the killing blow so they can resign. I am not such a person. I have Fighting Spirit. In short, this means I never give up until all really is lost. It means I look for ways to improve my position and or pieces regardless of the piece count. It means I take material loss in stride. It means that I refuse to lose!

I am not going to mention any names to protect the innocent, but the following have all actually occurred against still active strong Nebraska players. In many cases, my opponent even out ranked me! In one Nebraska tournament game I dropped a Bishop on the 4th move as White. I played the rest of the game with confidence, pushing my opponents pieces back further and further, until I eventually mated him in a pretty combination. After the game, my opponent asked me if what I had played (The piece drop) was a prepared line! In another instance I was black and dropped my Queen to a King and Queen fork by a white Knight on e7.

Once again, I used my pieces optimally, and didn't let the blunder affect how I played. It seemed to me that my opponent was

just waiting around for me to resign making non-committing moves without a plan. I eventually won that

game too. The fact is I play better when I am down material. This is exactly why I play so many gambit openings.

Recently in the Missouri State Championship I had another such game which gave me the idea for this article. In it, I dropped a pawn in the opening, but managed to draw. In the second game, I am playing against Keaton Kiewra in last year's Nebraska State Championship. In that game I misplayed the opening and didn't get any compensation for my sacked pawn. But, through active play, I got my pawn back, followed by him sacking a pawn to go into a drawn Rook and Pawn ending. Consequently, this was to be Keaton's last draw he has given up to a Nebraskan.

I don't always win or draw games after I drop material, but that had never stopped me from trying. My advice to everyone reading this article is simple: Do not get

**After the game, my opponent asked me if what I had played (The piece drop) was a prepared line!**

---

discouraged or upset when you make a material losing blunder, especially early in the game. Instead of fretting over what you have lost, look at the position carefully, and find the best squares for your pieces that you have left! I find the best way to come back in a game is to make your opponent believe that the blunder was a calculated sack, not a blunder. I am often quoted by my saying, "I don't drop pieces, I sack them!" It's all about mindset, and bringing out the courage to play for the win, especially when you are lost!

## 2006 Missouri State Closed Championship

### Round 1

White Ken Jones 2330

Black Tony Dutiel 1815

1. e4, e5 2. Nf3, Nf6 3. Nxe5, d6 4. Nf3, Nxe4 5. d4, d5 6. Bd3, Be7 7. O-O, O-O 8. h3, Be6 9. c4, c6 10. cxd5, Bxd5 11. Nc3, f5 12. Nxd5, Qxd5?

Here is my blunder that made possible the next series of threats. At the time I was thinking that cd was incorrect as then I couldn't attack his isolated d pawn which is where I thought my counterplay would come from. Ordinarily, this is true, but with f5 already being played, it is he that has the counterplay. Objectively, it was probably best just to trade off the Knight on c3, but I just couldn't play it since I had just played f5 to cement the outpost.

13. Ne5, b5 14. Bc2, Nd6?

Here he gave me a chance to breathe and I passed it up. Correct would have been 14. a4 followed by a6 or Nc5, both of which give white the edge. At this point I missed the only move that doesn't drop a pawn ...c5, and instead played a move that only drops a pawn instead of my queen. I looked at Kh8, but my queen doesn't have any safe squares it can go to and not get forked by the Knight on f7 after he plays Bc4.

15. Bb3, Nc4 16. Qd3, Kh8 17. Nxc4, bxc4 18. Bxc4, Qd6 19. b3, Bf6 20. Bb2, Nd7 21. Qxf5, Bxd4

Notice how I have put my pieces on their most active square and now invite white to open up the position, unafraid of my 2300 opponent out playing me tactically! He should have played Rad1 forcing me to protect my f-pawn. From this point on in the game I manage to keep the initiative.

22. Qd3, c5 23. Bxd4, cxd4

His reasoning for this trade must have been not wanting to give up his white square Bishop after Ne5. So he found a short term tactical solution with long term simplifications. Now he has to deal with my passed d pawn.

24. Rad1, Rf4 25. Qd2, Raf8 26. Qa5, Ne5

Objectively 26... Nb6 is better as it allows me to get my pawn back. If he plays Qxa6,

I can play Ra8 followed by Rxa2. However, my knight would be out of play, and his Rooks and Queen (which will probably find refuge on e3 later.) defend his position. He would also likely control the e file. So, in typical Tony fashion I sac a second pawn in order to improve my piece activity.

27. Qd5?

Psychology is setting in. He's afraid of my bold moves enough to attempt to go into an endgame rather than try out calculate me and survive my counterplay two pawn ahead. I am quite lost here, but I am not acting like it. I knew he could defend, if he played accurately, but my Fighting Spirit refused to admit defeat!

27... Qf6 28. f3, Rd8 29. Qb7?

The queen belongs on c5 where it doesn't just give my queen d6 to go to. I felt it was a blunder during the game too, but for different reasons. I thought that now that the queen is out of play, the position was ripe to start an attack based on his weakened dark squares. After 29.. d3 30. Qxa7, Qd6 I am threatening to force a draw with Nf3+ followed by Rf7!, which is hard to stop as I am also threatening Nxc4 followed by Qc4+.

29... Qg5 30. Rde1

Best was Kh1 followed by offering the c4 pawn as bait to activate whites rooks.

After the text, I am roughly equal.

31. Bd5?, Ng6?!

Another inaccuracy for both of us. He had to bring his queen back into the game by playing Qb5. I should have switched gears here and replied 31. d2!! followed by Nd3 and b2 if he moves the attacked Bishop. This was my best opportunity in the game to play for the win. While my idea looks promising, he is able to defend.

32. Be4, Nh4?

While this looks like a strong move, it is not. Better would have been the immediate Qc5+ followed by Ne5.

33. Rf2, Qc5 34. Rd1, d2

Here I liked my position, but 35. b4! would have been a bombshell. It wins the d pawn by force and most likely the game.

35. Qa6?, Rf6

Just like that I am back into the game creating threats and improving my pieces.

36. Qe2, Rfd6 37. g3, Nf5

I have to allow the piece trade here, but, because I retain the initiative, I am still slightly better.

38. Bxf5, Qxf5 39. Qe4!

He wisely ignores the threatened pawn and stops me from playing the strong Qc2.

39... Qxh3 40. Qh4, Qxh4 draw.

I couldn't find any winning line here over the board.. Instead of the Queen trade, I looked at, Qc8 followed by Qc1 is possible, but he can defend by retreating his f2 Rook back to f1. Also, I didn't see a way to make progress in the Rook and pawn ending as I would have to keep both Rooks on my d pawn and he would get in Re2 restricting my king to the kingside. A hard fought game where we both had winning opportunities at some point in the game.

2005 Nebraska State Closed Champ.  
Round 5 Board 1  
White Tony Dutiel 1736  
Black Keaton Kiewra 2246

1. e4, c5 2. c3, Nf6 3. e5, Nd5 4. d4, cxd4  
5. Nf3, Nc6 6. Bc4, Nb6 7. Bb3, d5 8. O-O,  
Bg4 9. Re1, dxc3 10. Nxc3, e6 11. Bf4,  
Be7 12. Rc1, O-O 13. Bc2, f6 14. Qd3, Bf5  
15. Qd1, fxe5 16. Bxe5, Nxe5 17. Nxe5,  
Bc5 18. Bxf5, Rxf5 19. Nd3, Qf8 20. Nxc5,  
Qxc5 21. Qe2, Raf8? 22. Qxe6+, Kh8

When playing 21... Rf8 he missed my resource on my next move. The point is that I mate him if he takes on c1 after Qxf5, Rxf5. Best was 21... e5 22. Ne4!, Qd4 23. Nd6, Rf6 24. Red1, Qh4 25. g3, Qb4 26. Nxb7, Nc4 23. Nd1!, Qb4 24. Rc3

I dismissed 24 Rc7 since he can defend with Rf7 now that the queen covers the f8 square. I wasn't ready to trade Rooks, so I maneuvered my Rook to g3 instead where I could defend and add pressure to g7.

24... h6 25. Rg3, Qd4 26. Qe3, Qf6

He could've traded here, but the ending is hard to win.

27. Qe7, Rxf2

Allowing me to simplify the position. I can also give up my queen for two Rooks here after 28. Qxf8+, Qxf8 29. Nxf2 creating an unbalanced position.

28. Qxg7+, Qxg7 29. Rxg7, Kxg7 30. Nxf2, Rc8 31. Kf1, Kf6 32. Ng4+, Kg5 33. Ne5, Nc4!

A clever way to draw.

34. Nxc4, Rxc4 35. Re5+, Kf4 36. Rxd5, Rc2 draw

I am forced to accept his draw as I am unable to make progress.



# LOAL DAVIS WINS 2007 KANSAS CITY MASTERS



**From left to right: Ron Luther; Thomas Gossell; Loal Davis; Tim Steiner; Ken Jones; Bill Orton.**

**T**he 2007 Kansas City Masters was held on the cold and icy weekend of January 12th-14th in Kansas City. On Friday night, the first round was held at 7PM. The icy roads were very dangerous, and players were concerned about traveling. As a consequence, Daniel Goffstein withdrew. Loal Davis, who was traveling from St. Louis, called me a few hours before the tournament and mentioned that he was an hour away from KC, and that numerous cars and trucks were in the ditch as he traveled thirty miles an hour on I-70.

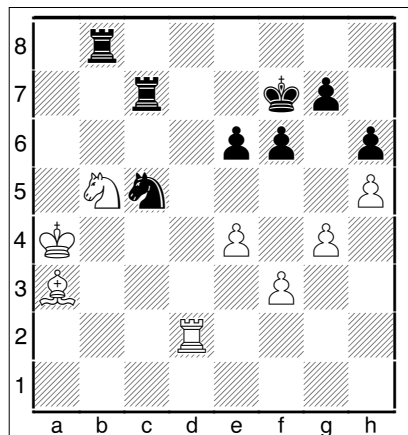
Luckily, the chess gods must have been watching over the Kansas City Masters. Loal arrived safely and Master William Orton from Arkansas drove on slippery roads looking to play some chess. Bill replaced Daniel and the 2007 event began.

The 2007 KC Masters was FIDE rated and players were required to play thirty moves before offering a draw. The following games are lightly annotated for publication, and I welcome full annotations from the participants.

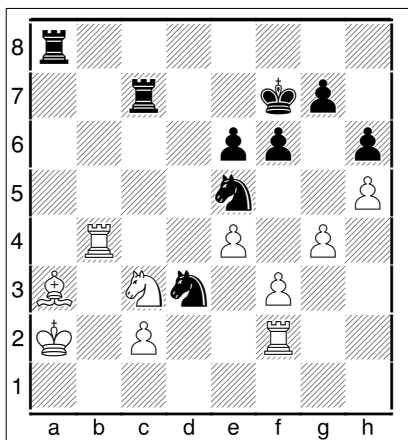
Round One on Friday Night - All three games were decisive battles.

Jones, Ken (2304) - Steiner, Tim (2006) [B67]  
 Kansas City Masters (1), 12.01.2007

1.e4 c5 2.Nf3 d6 3.d4 cxd4 4.Nxd4 Nf6 5.Nc3 Nc6  
 6.Bg5 e6 7.Qd2 a6 8.0-0 Bd7 9.f3 Rc8 10.Kb1  
 Be7 11.g4 Qc7 12.h4 b5 Here Ken trades a bishop  
 for three pawns and central pressure. 13.Bxb5  
 axb5 14.Ndxb5 Qb8 15.Nxd6+ Bxd6 16.Qxd6  
 Qxd6 17.Rxd6 Ne5 18.Rf1 Bc6 19.h5 h6 20.Bf4  
 Nfd7 21.b3 Ke7 22.Rdd1 f6 23.Bc1 Ra8 24.a4  
 Rhb8 25.Ba3+ Kf7 26.Ka2 Rb7 27.Rd6 Rc7 28.Rf2  
 Nb6 29.Rd4 Be8 30.Nd1 Tim returns the favor and  
 sacrifices the bishop for two pawns and the attack  
 on the white king. 30...Bxa4 31.bxa4 Nxa4 32.Kb3  
 Rb8+ 33.Rb4 Nc5+ 34.Ka2 Ra8 35.Nc3 Ncd3  
 Diagram



0-1



Very nice move! It appears that black is just trading  
 two knights for a rook and pawn. The problem is  
 that the c3 knight is hanging after all is said and  
 done. White's a3 bishop is also limited by the pin.  
 36.cxd3 Nxd3 [36...Rxc3 37.Rb7+ Ke8 38.Rb3  
 Rxb3 39.Kxb3 Rd8 40.f4 Nxd3=] 37.Nb5 Nxb4+  
 38.Kb3 Nd3 39.Rd2 [39.Nxc7 Rb8+ 40.Kc4 Nxf2  
 White is the exchange down.] 39...Rb8 40.Ka4  
 [40.Rxd3 Rxb5+ 41.Bb4 Rcb7 42.Rd4] 40...Nc5+

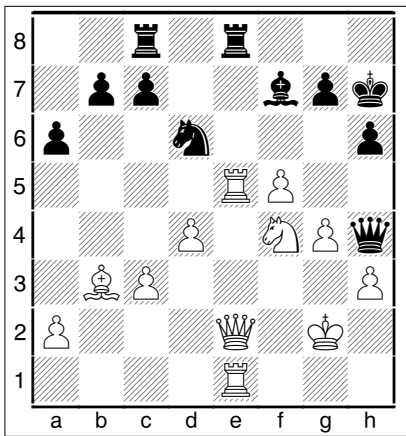


Loal Davis

Davis, Loal (2200) - Gossell, Thomas (2190)  
 [B00] Kansas City Masters (1), 12.01.2007

1.e4 Nc6 2.Nf3 f5 3.exf5 d5 4.d4 Bxf5 5.Bb5 e6  
 6.0-0 [6.Ne5 Nge7 7.c3] 6...Bd6 7.Re1 The back-  
 wards e6 pawn becomes a liability later in the  
 game. 7...Nge7 8.c4 Bb4 9.Bd2 0-0 10.Bc3 a6  
 Pushing the light-squared bishop to a better square.  
 11.cxd5 Qxd5 12.Ba4 Bg4 13.Bb3 Qd6 14.Nbd2  
 Kh8 15.h3 Bf5 16.g4 Bxc3 17.bxc3 Bg6 18.Rxe6  
 Loal's pieces unwind in the center! 18...Qd8 19.Ne5  
 Nxe5 20.Rxe5 Nc8 21.Qe2 Qh4 22.Kg2 Nd6  
 23.Nf3 Qf6 24.Ng5 Rac8 25.Ne6 Rfe8 26.f4 h6  
 27.Re1 Qh4 28.f5 Bf7 29.Nf4 Kh7 Diagram

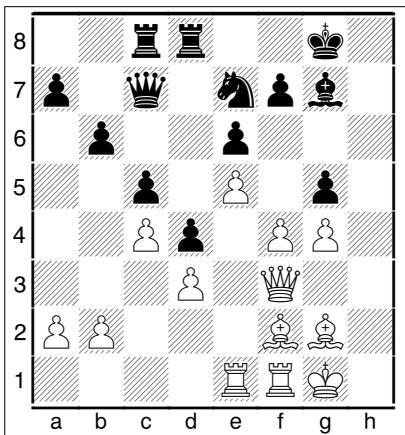




30. Bxf7 The final tactical shot. 1-0

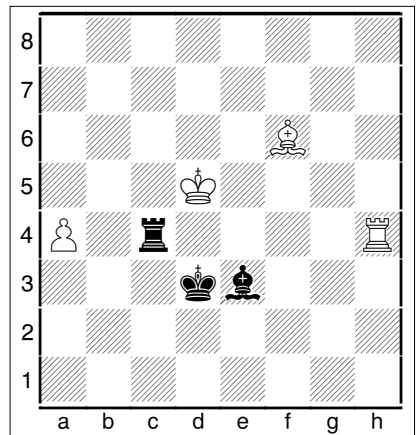
Luther, Ron (2243) - Orton, Bill (2201) [B24]  
 Kansas City Masters (1), 12.01.2007

The following game ended around 12:40AM. 1.e4  
 c5 2.Nc3 Nc6 3.g3 g6 4.Bg2 Bg7 5.d3 e6 6.Be3  
 Nd4 7.Nce2 Ne7 8.c3 Nxe2 9.Qxe2 b6 10.f4 Bb7  
 11.Nf3 d5 12.Bf2 Qc7 13.0-0 0-0-14.e5-h5-15.h3  
 Rfd8 16.g4 hxg4 17.hxg4 Rac8 18.Rae1 d4 19.c4  
 Bxf3 20.Qxf3 g5 Diagram



An interesting pawn sacrifice which according to Kmoch in Pawn Structure Chess is called a sweeper. The move seems to have numerous purposes. 1. Stop the white pawn storm. 2. Free the g6 square

for the black knight. 3. Weaken white's pawns at e5, g5, and g4. 21.fxg5 Ng6 22.Bg3 Qe7 23.Qf2 Rc7 [23...Qxg5 Of course, the g5 pawn is poisoned.] 24.Qd2 a6 25.Rf6 b5 [25...Bxf6 26.exf6 The rook is poison also - double attack.] 26.b3 bxc4 27.bxc4 Rb8 28.Ref1 Qe8 29.Qa5 Qc8 30.Be4 Nf8 31.Qd2 Rb6 32.Qf2 Qe8 33.Qh2 a5 34.Qh5 Rb2 35.Rf2 Rxf2 36.Rxf2 Qb8 37.g6 fxg6 38.Bxg6 Nxc6 39.Qxg6 Now white is just a clear pawn ahead. 39...Re7 40.Bh4 Qe8 41.Qxe8+ Rxe8 42.Bf6 Rb8 43.Kg2 Rb1 44.Rd2 a4 45.Be7 Bxe5 46.Bxc5 Bf4 47.Re2 Be3 48.Kf3 Rf1+ 49.Ke4 Rf4+ 50.Ke5 Rxc4 51.Kxe6 Rg1 52.Kd5 Rg5+ 53.Kc6 Rg1 54.Kb5 Rd1 55.Kxa4 Rxd3 56.Kb5 Kf7 57.a4 Ke6 58.Rh2 [58.Bxd4 Rxd4 59.Rxe3+ Winning rook and pawn endgame?] 58...Rb3+ 59.Kc6 Ke5 60.Rh8 Ke4 61.Rh4+ [61.a5 Bg5 62.a6 Rb2 63.a7 Ra2 Winning as Ron pointed out Saturday morning.] 61...Kd3 62.Kd5 Rc3 63.Bxd4 Rxc4 64.Bf6 Diagram



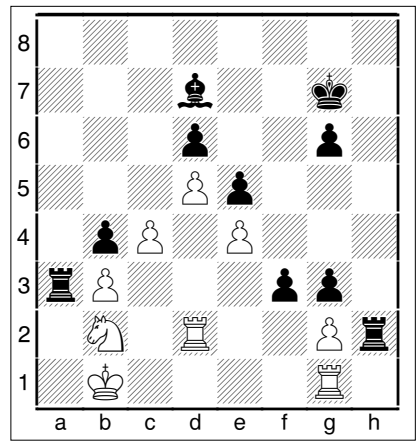
64...Rc5+ [64...Rxc4 65.Bxc4 Bd2 Is the best drawing change black seems to have. Bill was in time pressure - around six minutes here.] 65.Kd6 Rc2 66.a5 Ra2 67.Bd8 Bd2 68.Rh5 Bxa5 69.Bxa5 Most Rook and Bishop versus Rook endings are winning. In Van Perlo's Endgame Tactics published by New in Chess 2006, he shows that there are excep-

tions however. The side with the extra bishop must show perfect technique. 69...Rg2 70.Kd5 Rg3 71.Bc7 Rf3 72.Be5 Re3 73.Rh8 Ke2 74.Bd4 Re7 75.Rh3 Rd7+ 76.Ke4 Re7+ 77.Be5 Kf2 78.Rh2+ Kg1 79.Ra2 Rb7 80.Bf4 Rb3 81.Be3+ Kh1 82.Kf3 Rb7 [82...Rc3] 83.Ra1+ Bill resigned here. 83...Kh2 84.Bf4+ Kh3 85.Rh1# 1-0

Round Two - Saturday Morning - More blood was spilt as Black won all three games!

Orton, William (2201) - Davis, Loal (2200) [B03] Kansas City Masters (2), 13.01.2007

1.e4 Nf6 2.e5 Nd5 3.d4 d6 4.c4 Nb6 5.exd6 cxd6 6.Be3 g6 7.d5 Bg7 8.Bd4 Bxd4 9.Qxd4 0-0 10.h4 e5 A nice freeing move which activates black's light squared bishop and tempos the queen. 11.Qd2 h5 12.Nc3 N8d7 13.0-0-0 Nf6 14.f3 Kg7 15.b3 Bd7 16.Nh3 Nc8 17.Bd3 Ne7 18.Nf2 a6 19.Nfe4 [19.f4 is an interesting move attacking the front of the pawn formation.] 19...Nxe4 20.fxe4 [20.Nxe4 f5 21.Ng5] 20...Ng8 21.Rdf1 Nh6 22.Nd1 b5 threatening to bust white's kingside wide open. 23.Ne3 f6 24.Kb2 Qb8 25.Rc1 Rc8 26.Rc2 b4 27.Qf2 Qa7 28.Nd1 Rc5 29.Be2 a5 30.Rf1 f5 Loal is attacking on both sides of the board! 31.Kc1 a4 32.Nb2 axb3 33.axb3 Qa3 34.Qf3 [34.Qg3 fxe4 35.Bxh5 Bg4 36.Rf7+ Kxf7 37.Bxg4 Nxg4 38.Qxg4 is interesting!] 34...f4 35.Qd3 Ng4 36.Bxg4 hxg4 37.Rcf2 g3 38.Rd2 Rh8 [38...Rxc4+ 39.bxc4 Qxd3 40.Nxd3 Ra1+ 41.Kb2 Rxf1 Looks like fun, but I think Loal's approach is better!] 39.Kc2 Rxf4 40.Rb1 Qa7 41.Qf1 Ra5 42.Qg1 Qxg1 43.Rxg1 Rh2 44.Nd3 Ra2+ 45.Nb2 f3 46.Kb1 Ra3 Diagram



Resigns 47.Kc2 f2 48.Rf1 Rxg2 The passed g and f pawns are too much! 0-1

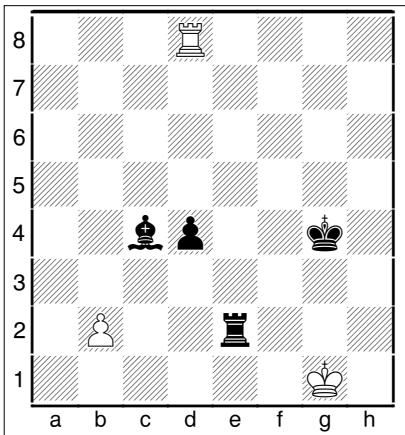
Jones, Ken (2304) - Luther, Ron (2243) [B01] Kansas City Masters (2), 13.01.2007

1.e4 d5 2.exd5 Qxd5 3.Nc3 Qa5 4.d4 Nf6 5.Nf3 Ne4 6.Bd3 Nxc3 7.bxc3 c6 8.Bd2 Bg4 9.h3 Bh5 10.c4 Qd8 11.Bc3 Nd7 12.Rb1 Qc7 13.Qe2 e6 14.Bd2 Be7 15.0-0 0-0 16.Qe3 Bf6 17.Rfe1 Rfd8 18.Ng5 Nf8 19.c3 Bxg5 20.Qxg5 Bg6 21.Bf4 Qd7 22.Bxg6 Nxg6 23.Qg3 b6 24.h4 Nxf4 25.Qxf4 Qd6 26.Qg4 Rac8 27.h5 h6 28.Re3 c5 29.Rg3 Qf8 30.Rd1 cxd4 31.Rxd4 Rxd4 32.Qxd4 Rc5 33.Qg4 Rg5 34.Qf3 Ra5 35.Qe2 Qc5 36.Rd3 Qxh5 37.f3 Qg5 38.Rd7 Qf5 39.Qd2 Qb1+ 40.Kh2 Rxa2 0-1

Steiner, Tim (2006) - Gossell, Thomas (2190) [C28] Kansas City Masters (2), 13.01.2007

1.e4 Nc6 2.Nc3 e5 3.Bc4 Nf6 4.d3 Be7 5.f4 0-0 6.Nf3 d6 7.0-0 Na5 8.Bb3 c6 9.Qe1 Nxb3 10.axb3 exf4 11.Bxf4 d5 12.e5 Ne8 13.Kh1 Nc7 14.Qg3 Ne6 15.Bd2 Kh8 16.Ne2 f6 17.Bc3 f5 18.Nf4 c5 19.Bd2 d4 20.h4 stopping g5 20...Nxf4 21.Bxf4 Be6 22.Bg5 h6 23.Bxh6 Trading a bishop for three pawns and some play for White. 23...gxh6 24.Qg6 Bg8 25.Qxh6+ Bh7 26.Ng5 Bxg5 27.hxg5 Qe8

28.Rf3 [28.e6 Qg6 29.e7 Qxh6+ 30.gxh6 Rfe8 and black seems to hold the position,] 28...Qg6 29.Qh4 [29.Qxg6 Bxg6 30.Rh3+ Kg7] 29...Rfe8 30.Qf4 Re6 31.Rh3 a6 32.b4 Rae8 33.bxc5 Qg7 34.Kh2 Kg8 35.Qxd4 Qxe5+ 36.Qxe5 Rxe5 37.c6 bxc6 38.Rxa6 R8e6 39.d4 Re2 40.d5 [40.c4 f4 (40...Rxb2 if black gets greedy... 41.Ra8+ Kg7 42.Ra7+ winning the bishop) 41.Ra8+ Re8 42.Rxe8+ Rxe8 43.Rh6 Be4 44.Rd6 Kf7 45.Rf6+ Kg7 46.Rxf4 Kg6 may be a better try for white.] 40...cxd5 41.Rxe6 Rxe6 42.Rd3 Re5 43.Rd4 Kf7 44.Kg3 Kg6 45.Kf3 [45.Kf4 Re4+ 46.Rxe4 fxe4 47.b4 Kf7 48.c3 Ke6 49.Ke3 Ke5 50.b5 Kd6 51.Kd4 Kc7 52.g3 Kb6 winning for black] 45...Kxg5 46.g4 [46.c4 dxc4 47.Rxc4 Re4] 46...f4 47.Rxf4 Be4+ 48.Kg3 Bxc2 49.Rd4 Bb3 blocking the b2 pawn and not taking any chances 50.Rd3 Bc4 51.Rf3 d4 52.Rf8 Re3+ 53.Kf2 Kxg4 54.Rd8 Re2+ 55.Kg1 Diagram



55...Rd2 missing a mate in six or better! Kg3 wins on the spot! [55...Kg3 works because the c4 bishop protects the g8 square and stops white from checking! 56.Rf8 what does white play here... game over!] 56.Rc8 Bd5 57.b4 Kf3 58.b5 d3 59.b6 Rb2 60.Rd8 Be4 white lost on time! 0-1

Round Three - Saturday Night - Three hard

fought draws.

Gossell, Thomas (2190) - Orton, Bill (2201) [D00] Kansas City Masters (3), 13.01.2007

1.d4 d5 2.Bf4 Nf6 3.e3 c6 4.c4 Bg4 5.Qb3 Qb6 6.c5 Qxb3 7.axb3 Nbd7 8.b4 Nh5 9.h3 Bf5 10.Bh2 Bxb1 11.Rxb1 a6 12.Nf3 e6 13.Bd3 Be7 14.Nd2 0-0 15.Nb3 Bd8 16.Ra1 Rc8 17.0-0 Bc7 18.Bxc7 Rxc7 19.g4 Nhf6 20.f4 g6 21.Nd2 Ne8 22.Nf3 f6 23.g5 f5 24.h4 Ng7 25.Kg2 Kf7 26.Nd2 Rh8 27.Rh1 h5 28.Nb3 Rb8 29.Ra3 Ne8 30.Raa1 1/2-1/2

Steiner Tim (2010) - Luther Ron (2240) [A51] Kansas City Masters (3), 13.01.2007

1.d4 Nf6 2.c4 e5 3.dxe5 Ne4 4.Nd2 Bb4 5.a3 Bxd2+ 6.Bxd2 b6 7.Bf4 Bb7 8.Nf3 Qe7 9.e3 g5 10.Bg3 Nc6 11.Be2 0-0-0 12.Qc2 Nxg3 13.hxg3 white has a pawn but there is a lot of play in the black's position. 13...Nxe5 14.Rxh7 Ng4 [14...Qf6 15.Nxe5 Qxe5 16.Rxh8 Rxh8 17.Bf1 Rh2 18.Rd1 is one idea for black] 15.Bd3 Rxh7 16.Bxh7 Rh8 17.Ke2 Kb8 18.Bf5 Ne5 19.Be4 Nc6 20.Qc3 Re8 21.Bd5 f5 putting pressure on the white king. 22.Rh1 g4 23.Nd2 Ne5 24.Bxb7 Kxb7 25.b4 c5 26.Nb3 d6 27.Rh6 Kc7 28.Nd2 Qg7 29.Rh1 Qf7 30.Rh6 Qg7 31.Rh1 Re7 32.Rh5 Qf7 33.Rh6 Ng6 34.Kf1 1/2-1/2

Davis, Loal (2200) - Jones, Ken (2304) [B82] Kansas City Masters (3), 13.01.2007

1.e4 c5 2.Nf3 Nc6 3.d4 cxd4 4.Nxd4 Qb6 5.Nb3 Nf6 6.Nc3 e6 7.Bd3 d6 8.Be3 Qc7 9.f4 Be7 10.0-0 a6 11.a4 b6 12.Qf3 Bb7 13.g4 [13.a5 Nxa5 14.Nxa5 bxa5 is one idea.] 13...Nd7 14.g5 Nc5 15.Rf2 Nb4 16.Nxc5 bxc5 17.f5 Nxd3 18.cxd3 exf5 19.Qxf5 0-0 20.Raf1 g6 21.Qg4 Qc8 22.Qxc8 Raxc8 23.Rd2 f6 24.gxf6 Bxf6 25.d4 cxd4

26.Bxd4 Bg5 27.Rd3 Bf4 28.Rdf3 g5 29.Be3 very nice exchange into an opposite colored bishop ending. 29...Rxc3 30.bxc3 Bxe4 31.Rxf4 gxf4 1/2-1/2

Round Four -Sunday Bloody Sunday Morning - Three More Wins!

Jones, Ken (2306) - Gossell, Thomas (2190) [B00] Kansas City Masters (4), 14.01.2007

1.e4 Nc6 2.d4 e5 3.dxe5 Nxe5 4.Nf3 Qf6 5.Nxe5 Qxe5 6.Bd3 d5 7.0-0 dxe4 8.Bxe4 Bd6 9.g3 Nf6 10.Bf3 0-0 11.Nd2 Bc5 12.Nc4 Qf5 13.Bf4 Be6 14.Ne3 Bxe3 15.Bxe3 Bc4 16.Bxb7 [16.Re1 c6 17.Bd4 Rad8 18.Re5 is a possible variation] 16...Rab8 17.Bg2 Bxf1 18.Qxf1 Rxb2 19.Bxa7 Rxc2 20.a4 c5 White has the bishop pair and a passed a pawn. However, c5 traps the a7 bishop from reaching the other side of the board. 21.Rc1 Ng4 22.Rxc2 Qxc2 23.h3 Rd8 Ken resigned - white's back rank is weak. One possible continuation is as follows. 24.Bf3 Ne5 25.Qe2 Nxf3+ 26.Qxf3 c4 27.a5 Qd2 28.Bb6 Qd1+ 29.Kg2 Qxf3+ 30.Kxf3 Rd6 31.Bc5 Rc6 32.Ba3 c3 33.Ke2 Rf6 34.Bb4 c2 35.Kd2 Rxf2+ 36.Kc1 f6 37.Bc3 Re2 38.Bd4 Re4 39.Bc3 Re2 0-1

Luther, Ron (2243) - Davis, Loal (2200) [B02] Kansas City Masters (4), 14.01.2007

1.e4 Nf6 2.Nc3 d5 3.exd5 Nxd5 4.Bc4 Nb6 5.Bb3 c5 6.d3 Nc6 7.Nf3 e6 8.Bf4 Bd6 9.Bxd6 Qxd6 10.Ne4 Qe7 11.c3 0-0 12.Qe2 Nd5 13.0-0-0 b6 14.g4 Rd8 15.g5 Ba6 16.Bc2 Qc7 17.Rhg1 Nce7 18.Kb1 Nf5 19.Ng3 Nf4 20.Qe5 Qxe5 21.Nxe5 Nh4 22.Ne4 Bb7 23.Rg4 Nhg6 24.Nxg6 Nxg6 25.Re1 Kf8 26.h4 Ba6 27.Re3 Ne5 28.Rgg3 Ng6 29.Rg4 Ne5 30.Rgg3 Ng6 31.h5 Luther declines the draw. 31...Ne7 32.Rh3 Nf5 33.Re1 Ke7 34.Rf3 Rd5 35.h6 Rad8 36.hxg7 Nxg7 37.c4 Rf5 38.Rh3 Bb7 39.Rxh7 Bxe4 40.dxe4 Rxg5 41.Kc1 e5 42.Ba4

Ne6 43.Bc6 Rg2 44.Rf1 Rd3 45.Rh5 Rf3 46.Bd5 Rxf2 47.Rxf2 Rxf2 48.Rxe5 Kd6 49.Rh5 Nf4 50.e5+ Ke7 51.Rg5 Nd3+ 52.Kd1 Nxb2+ 53.Kc1 Nd3+ 0-1

Orton, Bill (2201) - Steiner, Tim (2006) [B22] Kansas City Masters (4), 14.01.2007

1.e4 c5 2.c3 Nf6 3.e5 Nd5 4.d4 cxd4 5.cxd4 e6 6.Nf3 d6 7.a3 Bd7 8.Bd3 Bc6 9.0-0 Nd7 10.Qe2 a6 11.Bd2 Be7 12.Nc3 Nxc3 13.Bxc3 Qb8 14.Rfe1 Nb6 15.Bd2 h6 16.Bf4 g5 17.Bg3 d5 18.Rac1 Kd7 19.Nd2 h5 20.h3 Qg8 21.f4 gxf4 22.Bxf4 Qg7 23.Rf1 Rag8 24.Nf3 Nc4 25.Rf2 b5 26.Rcf1 Rb8 27.Bc1 Kd8 28.h4 Qg4 29.Ng5 Bxg5 30.Bxg5+ Kc8 31.Qxg4 hxg4 32.b3 Nxa3 33.Rxf7 Be8 34.Rc1+ Nc4 35.Rf4 Kb7 36.bxc4 dxc4 37.Be4+ Bc6 38.Rxg4 Bxe4 39.Rxe4 Kc6 40.Re2 Kd5 41.Ra1 Rb6 42.Rea2 b4 43.Rxa6 Rhb8 44.Rxb6 Rxb6 45.Kf2 c3 46.Ke2 Kc4 47.Ra4 Kb3 48.Ra5 Kc2 49.Rc5 Rb8 50.Rc4 Rb7 51.g3 Rb8 52.Bf4 b3 53.Bd2 b2 54.Rxc3+ Kb1 55.h5 Ka2 56.Rc2 Kb3 57.Rxb2+ Kxb2 58.h6 Rg8 59.Kf3 Kc2 60.Bf4 Kd3 61.g4 Kxd4 62.g5 1-0

Round Five - Loal wins the KC Masters!

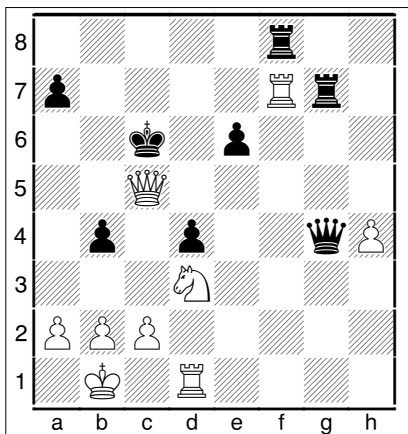
Davis, Loal (2200) - Steiner, Tim (2006) [B89] Kansas City Masters (5), 14.01.2007

1.e4 After winning against Luther in round four, Loal only needed a draw to win the event. 1...c5 2.Nf3 d6 3.d4 cxd4 4.Nxd4 Nf6 5.Nc3 Nc6 6.Bc4 e6 7.Be3 Bd7 8.Qe2 a6 9.a3 b5 10.Ba2 Be7 11.0-0 Rc8 12.f4 Qc7 13.f5 e5 14.Nxc6 Bxc6 15.Bg5 0-0 16.Rfd1 a5 17.Bxf6 Bxf6 18.Nd5 Bxd5 19.Rxd5 Qxc2 20.Qxc2 Rxc2 21.Rxb5 Rfc8 22.Rb7 R8c7 23.Rxc7 Rxc7 24.Rd1 Be7 25.Rd2 Rc5 26.Bb3 Kf8 27.Rc2 Bg5 28.Rxc5 dxc5 29.a4 Bc1 30.Bc4 Bxb2 31.Kf2 The opposite colored bishop ending is drawn! 1/2-1/2

Gossell, Thomas (2190) - Luther, Ron (2243)

[D00] Kansas City Masters (5), 14.01.2007

1.d4 d5 2.Bf4 e6 3.e3 Bd6 4.Bxd6 Qxd6 5.Qg4  
Kf8 6.Nc3 Nf6 7.Qh4 b6 8.0-0-0 Ba6 9.Nf3 Bxf1  
10.Rhxf1 Nbd7 11.Kb1 c6 12.e4 dxe4 13.Nxe4  
Nxe4 14.Qxe4 Qd5 15.Qf4 Rc8 16.Ne5 Nf6 17.f3  
Ke7 18.Qg5 Rhg8 19.Rfe1 h6 20.Qh4 b5 21.g4  
Rh8 22.f4 g5 Weakening the kingside. Where does  
black's king-side? [22...Kf8 23.Qg3 Kg8 24.h4]  
23.fxg5 hxg5 24.Qxg5 Rcg8 25.Qf4 Rg7 26.g5  
Ne8 27.h4 f6 28.gxf6+ Nxf6 29.Rf1 Nh5 30.Qe3 b4  
31.Qd3 Rf8 32.Qd2 c5 33.Qh6 cxd4 34.Qxh5 Qe4  
35.Nd3 Qg2 36.Rf2 Qg4 37.Rf7+ Kd6 [37...Rxf7  
38.Qxg4 Rxg4 39.Ne5 Rfg7 40.Nxg4 Rxg4 41.Rh1]  
38.Qe5+ Kc6 39.Qc5# Diagram



1-0

Orton, William (2201) - Jones, Ken (2304) [B22]  
Kansas City Masters (5), 14.01.2007

1.e4 c5 2.c3 Nf6 3.e5 Nd5 4.d4 cxd4 5.cxd4 d6  
6.Nf3 Nc6 7.Bc4 Nb6 8.Bb3 d5 9.h3 Bf5 10.Nc3  
e6 11.0-0 Be7 12.Ne1 Rc8 13.Bc2 Bxc2 14.Nxc2  
0-0 15.Qg4 Kh8 16.g3 f5 17.exf6 Bxf6 18.Qxe6  
Bxd4 19.Nb5 Bc5 20.Bf4 Rf6 21.Qe2 d4 22.Rad1  
Qd7 23.Qg4 [23.b4] 23...Qd5 24.Rfe1 Rcf8 25.Be3  
[25.Nc7 Qc4 26.Rd2 Rg6 27.Qf3] 25...Ne5 Bill  
resigns. 26.Nc3 Qf7 27.Qe4 Nf3+ 28.Kh1 Nxe1  
29.Bxd4 Bxd4 30.Nxd4 Re8 And white is a full rook  
down. 0-1

The 2007 version of the KC Masters was a suc-  
cess with eleven wins and only four draws!

I would like to thank TD Wayne Bartlett for helping  
me direct and the players for braving their way  
through the harsh driving conditions. See you next  
year!

—Reported by Ken Fee

The Final Standings

## 2007 KC Masters - FIDE Rated!

	Name	Rating	FIDE	State	1	2	3	4	5	6	Score
1	Kenneth Jones	2304	2232	MO	X	0	½	0	1	0	1.5
2	Ron Luther	2243	2173	MO	1	X	0	0	1	½	2.5
3	Loal Davis	2200	2190	MO	½	1	X	1	1	½	4.0
4	Thomas Gossell	2190	2246	MO	1	1	0	X	½	1	3.5
5	William Orton	2201	2158	AR	0	0	0	½	X	1	1.5
6	Tim Steiner	2006	2188	KS	1	½	½	0	0	X	2.0

# FRANK MARSHALL OPEN

## OCTOBER 7, 2006 - COLUMBIA, MO

1	DANIEL O ROBERTS	3.0	W	11	W	4	W	10
MO	12823557 / R: 1740 ->1786							
2	THOMAS R REHMEIER	2.5	D	8	W	6	W	15
MO	12863508 / R: 1649 ->1663							
3	NATHANAEL DAVID SWINGER	2.0	L	6	W	9	W	18
MO	12832340 / R: 1824 ->1811							
4	STEPHEN AUGUST BRIETZKE	2.0	W	12	L	1	W	17
MO	12818957 / R: 1727 ->1729							
5	MIKE CLARK	2.0	W	16	D	10	D	8
MO	12608190 / R: 1686 ->1706							
6	SHAN H SIDDIQI	2.0	W	3	L	2	W	19
MO	12722914 / R: 1628 ->1639							
7	STANLEY M HORTON JR	2.0	L	10	W	13	W	21
MO	12518019 / R: 1620 ->1616							
8	THOMAS S REAMS	2.0	D	2	W	16	D	5
KS	12904219 / R: 1538 ->1601							
9	DOUGLAS R HOWE	2.0	W	19	L	3	W	20
MO	12863505 / R: 1461 ->1466							
10	EDWARD A IRISH	1.5	W	7	D	5	L	1
MO	10367549 / R: 1756 ->1750							
11	TIMOTHY P BOYD	1.5	L	1	W	17	D	13
MO	12163220 / R: 1600 ->1600							
12	KHIN M KYI	1.5	L	4	D	14	W	22
MO	11256511 / R: 1587 ->1570							
13	TIM V CAMPBELL	1.5	W	21	L	7	D	11
MO	12566437 / R: 1355 ->1361							
14	ARJUN K KHURANA	1.5	W	20	D	12	U	0
MO	12832291 / R: 1166 ->1204							
15	HUGHES LEE	1.5	W	24	D	18	L	2
MO	12896830 / R: 1175 ->1189							
16	NATHANIEL S FAST	1.0	L	5	L	8	W	23
MO	12828016 / R: 1909 ->1876							
17	VIKRAM ARUNACHALAM ARUN	1.0	W	23	L	11	L	4
MO	13048508 / R: 1468 ->1452							
18	CHARLES E W WARD	1.0	H	0	D	15	L	3
MO	10343411 / R: 1414 ->1399							
19	KELLEN A CROSS	1.0	L	9	W	22	L	6
KS	12817756 / R: 1106 ->1146							
20	STEPHEN G EASTON	1.0	L	14	W	23	L	9
MO	13509285 / R: Unrated->1082P3							
21	DANIEL Y SHYU	1.0	L	13	W	24	L	7
MO	13039532 / R: 674P9 -> 733P12							
22	VAIRAM ARUNACHALAM	0.5	H	0	L	19	L	12
MO	13217276 / R: 1375 ->1333							
23	MARK L JOHNSON	0.0	L	17	L	20	L	16
MO	13468408 / R: 1009P13-> 984P16							
24	ASHWATH S KUMAR	0.0	L	15	L	21	U	0
MO	13419022 / R: 821P7 -> 762P9							

# \$5 PLAY FOR RATING OPEN

NOVEMBER 22, 2006 - KANSAS CITY, MO

Pair Num	Player Name USCF ID / Rtg (Pre->Post)	Total Pts	Round 1	Round 2	Round 3
1 KS	BOB SPIES 10369584 / R: 1753 ->1762	3.0	W 9	W 10	W 3
2 KS	ALAN NEAL 12864158 / R: 1539 ->1599	3.0	W 8	W 4	W 7
3 KS	TIMOTHY M WALKER 12664620 / R: 1612 ->1615	2.0	W 11	W 5	L 1
4 MO	FRANK H SMITH 12834366 / R: 1561 ->1553	2.0	W 6	L 2	W 8
5 KS	DAN HOLMES 13221068 / R: 1521P19->1508P22	2.0	W 12	L 3	W 10
6 KS	TODD R FORBES 12807302 / R: Unrated->1206P3	2.0	L 4	W 12	W 11
7 KS	LAURENCE COKER 12174160 / R: 1630 ->1613	1.5	H 0	W 11	L 2
8 KS	STEVEN I YOO 13564671 / R: Unrated->1224P3	1.0	L 2	W 9	L 4
9 KS	DANIEL ELLIOTT 13556561 / R: Unrated-> 957P3	1.0	L 1	L 8	W 12
10 MO	FRED A SMITH 13100001 / R: 752 -> 751	1.0	X 0	L 1	L 5
11 MO	BRYON R MCLAUGHLIN 12919847 / R: 870 -> 862	0.0	L 3	L 7	L 6
12 KS	JASON WEST PFORTMILLER 13488361 / R: 847P3 -> 767P6	0.0	L 5	L 6	L 9

# FRIDAY NIGHT QUICK CASH

## DECEMBER 29, 2006 - KANSAS CITY, MO

Pair Num	Player Name USCF ID / Rtg (Pre->Post)	Total Pts	Round 1	Round 2	Round 3
1 MO	RONALD LUTHER 10365007 / R: 2243 ->2247 Q: 2126 ->2131	3.0	W 7	W 12	W 3
2 MO	FRANK H SMITH 12834366 / R: 1558 ->1657 Q: 1467 ->1570	3.0	W 11	W 14	W 12
3 MO	TIM B BLACO 11375961 / R: 1876 ->1886 Q: 1765 ->1780	2.0	W 4	W 5	L 1
4 MO	MICHAEL V HOCHEE 12671511 / R: 1658 ->1659 Q: 1705P22->1702P25	2.0	L 3	W 13	W 16
5 KS	BOB SPIES 10369584 / R: 1765 ->1761 Q: 1595 ->1605	2.0	W 13	L 3	W 14
6 MO	KARL BODENHEIMER 12369890 / R: 1594 ->1592 Q: 1404P25->1403	2.0	L 12	W 16	W 15
7 MO	MATTHEW J CONWAY 11236120 / R: 1681 ->1673 Q: 1772P14->1751P17	1.5	L 1	W 15	D 8
8 MO	JOSEPH C CONKLIN JR 10365473 / R: 1427 ->1436 Q: 1489 ->1492	1.5	W 10	L 11	D 7
9 MO	BEVERLY HOCHEE 12348240 / R: 1387 ->1338 Q: 1387P10->1308P13	1.5	L 16	W 19	D 10
10 MO	FRED A SMITH 13100001 / R: 755 -> 802 Q: 773P11-> 816P14	1.5	L 8	W 18	D 9
11 MO	TONY DUTIEL 12602486 / R: 1829 ->1814 Q: 1669 ->1658	1.0	L 2	W 8	U 0
12 WI	IVAN WIJETUNGE 12511643 / R: 1867 ->1852 Q: 1649 ->1635	1.0	W 6	L 1	L 2
13 MO	SPENCER L CONKLIN 12818486 / R: 1429 ->1416 Q: 1553 ->1529	1.0	L 5	L 4	W 19
14 KS	SCOTT JAMES VALENTI 12469500 / R: 1328 ->1319 Q: 1320 ->1306	1.0	W 19	L 2	L 5
15 MO	JOHN LYONS 12927329 / R: 1180 ->1174 Q: 832 -> 834	1.0	W 18	L 7	L 6
16 MO	CHRISTOPHER A REYNOLDS 12823542 / R: 1064P24->1118 Q: 1054P8 ->1114P11	1.0	W 9	L 6	L 4
17 MO	RODNEY W CRITES 12998962 / R: 1062 ->1064 Q: 1041 ->1043	1.0	U 0	U 0	W 18
18 MO	JOSEPH BODENHEIMER 13495200 / R: 424P5 -> 421P8 Q: 405P5 -> 405P8	0.0	L 15	L 10	L 17
19 MO	DAVID BODENHEIMER 13495195 / R: Unrated-> 307P3 Q: 307P7 -> 307P10	0.0	L 14	L 9	L 13



# CHRISTMAS TREE OPEN

## DECEMBER 30, 2006 - KANSAS CITY, MO

Pair Num	Player Name USCF ID / Rtg (Pre->Post)	Total Pts	Round 1	Round 2	Round 3
1 KS	TIM C STEINER 12520946 / R: 1989 ->1991	2.5	W 14	W 8	D 2
2 MO	NATHANIEL S FAST 12828016 / R: 1876 ->1888	2.5	W 9	W 5	D 1
3 MO	TONY DUTIEL 12602486 / R: 1814 ->1809	2.0	H 0	D 15	W 7
4 KS	BOB SPIES 10369584 / R: 1761 ->1750	2.0	W 12	L 7	W 11
5 MO	FRANK H SMITH 12834366 / R: 1657 ->1685	2.0	W 10	L 2	W 15
6 MO	MATTHEW J CONWAY 11236120 / R: 1673 ->1660	2.0	D 15	D 11	W 12
7 KS	TIMOTHY M WALKER 12664620 / R: 1615 ->1629	2.0	W 16	W 4	L 3
8 IA	THOMAS HESSE 12471410 / R: 1739 ->1730	1.5	W 13	L 1	D 9
9 MO	NICHOLAS SHANNON 12877372 / R: 1456 ->1523	1.5	L 2	W 10	D 8
10 MO	GARY MICHAEL WHITE 10380499 / R: 2057 ->2026	1.0	L 5	L 9	W 13
11 MO	JOSEPH C CONKLIN JR 10365473 / R: 1436 ->1442	1.0	H 0	D 6	L 4
12 MO	VIKRAM ARUNACHALAM ARUN 13048508 / R: 1443 ->1432	1.0	L 4	W 16	L 6
13 MO	SPENCER L CONKLIN 12818486 / R: 1416 ->1428	1.0	L 8	W 14	L 10
14 MO	BYRON WILLIAMSON 12778618 / R: 1427 ->1410	1.0	L 1	L 13	W 16
15 KS	DAIKI SAMPEI 12817699 / R: 1338 ->1372	1.0	D 6	D 3	L 5
16 KS	SARAH SAMPEI 13114628 / R: 1010 -> 999	0.0	L 7	L 12	L 14

# THE PAWN SHOP

## A LOOK AT THE WORLD CHAMPIONSHIP

### TOPALOV VS. KRAMNIK

BY LOAL DAVIS

(1) Topalov (2813) - Kramnik  
(2743)  
WCC 2006 Elista (2), 24.09.2006  
[Davis,Loal]



1.d4 d5 2.c4 c6 3.Nc3 Nf6 4.Nf3  
dxc4 5.a4 Bf5 6.e3 e6 7.Bxc4 Bb4  
8.0-0 Nbd7 9.Qe2 Bg6 10.e4 0-0  
11.Bd3 Bh5 12.e5 Nd5 13.Nxd5 cxd5  
14.Qe3 Bg6 15.Ng5 Re8 16.f4 Bxd3  
17.Qxd3 f5 18.Be3 [18.exf6 Nxf6 leaves  
White with a weak center (white holes, isolated target on 'd4'), and a Bishop "serving" as a Big Pawn. 19.Rd1; 18.Qb5 was worthy of attention; Black being sorely pressed, and not at all clear how to equalize.] 18...Nf8  
19.Kh1! A superb move. A violent storm is brewing. 19...Rc8 20.g4 Qd7 [20...h6 is to be avoided, as it seriously weakens the Kingside. With 21.Nh3 (21.Nxe6 Rxe6 22.gxf5) 21...fxg4 22.Nf2 Qh4 23.Rg1 White will pile up on the 'g' file.] 21.Rg1 Be7  
22.Nf3 Rc4 23.Rg2 Throwing caution to the winds. [Black was prompting 23.b3 which may well have been played. White continues with Rg2 and doubling on the 'g' file, while Bd2 covers the 'c' square.] 23...fxg4 24.Rxg4 Rxa4 25.Rag1 g6 26.h4 Rb4 Yes - the 'b' Pawn, but the real counter is 'Qb5' and it looks like the white Queen cannot participate

in the attack. 27.h5 [With 27.f5 exf5 28.R4g2 Rc8 29.h5 Kf7 it's not clear how White is to break through. Black's King may make a run for it, and 'hg/hg' will open the 'h' file for Black as well. Maybe before Black utilizes the 'e6' blockade square

White can attempt 30.e6+ but 30...Qxe6 31.Ne5+ Ke8 is not at all clear.] 27...Qb5 I thought this was light's out for Topalov. 28.Qc2!! A genius move! - I rarely use the word. 28...Rxb2 29.hxg6 h5 Attempting to close lines. [With 29...Rxc2 30.gxh7+ Kxh7 31.Rg7+ Kh8 32.Rg8+ Kh7 33.R1g7+ Kh6 34.f5+ Bg5 35.Rxg5 Black is burnt toast.] 30.g7! Astounding. 30...hxg4 [And here 30...Rxc2 31.gxf8Q+ Kxf8 32.Rg8+ Kf7 33.R1g7# White mates.] 31.gxf8Q+ Bxf8?? Absolutely losing. [31...Kxf8 32.Qg6 Bh4 with a desperate attempt at exit by the black King is not pretty, but Black might just scrape by.] 32.Qg6+?? No! No! [32.Rxg4+ Bg7 33.Qc7 most likely this "around the other corner" move was overlooked by Topalov. 33...Qf1+ 34.Ng1 is a crusher.] 32...Bg7 33.f5!?

Continuing the attack. [33.Ng5 Re7 34.Qh7+ Kf8 35.Qg6 Qe2 36.Nh7+ Kg8 37.Nf6+ Kf8 38.Nh7+ draws.] 33...Re7 34.f6 Qe2 35.Qxg4 Rf7 36.Rc1? This can't be right. [36.Qh5 Qxe3 (36...Rb3 37.Rxg7+ Rxg7

38.fxg7) 37.Ng5 is winning.] 36...Rc2  
 37.Rxc2 [37.Re1 Qd3 38.Qh5 Qe4 39.Rg1 is  
 still unclear.] 37...Qd1+ 38.Kg2 [38.Qg1  
 Qxc2 (38...Qxf3+ 39.Rg2 Qh3+ 40.Rh2 Qf3+  
 41.Rg2) 39.Ng5 still appears an equal fight.]  
 38...Qxc2+ 39.Kg3 Qe4 40.Bf4?! Clutching -  
 and a very awkward toe-stepping. [With  
 40.Qxe4 dxe4 41.Ng5 Rd7 (41...Bh6 42.Nxf7  
 Bxe3 43.Nd8 Bxd4 44.f7+ Kf8 45.Nxe6+)  
 42.Nxe6 Black is about to get steamrolled.]  
 40...Qf5 41.Qxf5 exf5 42.Bg5 a5 43.Kf4 a4  
 44.Kxf5 a3 45.Bc1 Bf8 [Clearer may be  
 45...a2 46.Bb2 Bf8 47.e6 Rc7] 46.e6 Rc7  
 47.Bxa3 Bxa3 48.Ke5 Rc1 49.Ng5 Rf1  
 50.e7 Re1+ 51.Kxd5 Bxe7 52.fxe7 Rxe7  
 53.Kd6 Re1 54.d5 Kf8 55.Ne6+ Ke8  
 56.Nc7+ Kd8 57.Ne6+ Kc8 Black has more  
 than squeaked through. That's all she wrote.  
 58.Ke7 Rh1 59.Ng5 b5 60.d6 Rd1 61.Ne6  
 b4 62.Nc5 Re1+ 63.Kf6 Re3 What an  
 incredible fight. 0-1

(2) Kramnik (2814) - Topalov (2743)  
 WCC 2006 Elista (8), 05.10.2006  
 [Davis,Loal]

1.d4 d5 2.c4 c6 3.Nf3 Nf6 4.Nc3 e6 5.e3  
 Nbd7 6.Bd3 dxc4 7.Bxc4 b5 The Meran  
 Defense. It's actually a hybrid of the Queen's  
 Gambit Accepted. 8.Be2 It begins to look as  
 if White wants this Bishop on 'f3'. 8...Bb7  
 9.0-0 b4 Kramnik used this idea as Black  
 back on game #4. [9...a6 was on one of, if  
 not the, first idea(s) in this position. Black is  
 preparing the 'c5' break.] 10.Na4 c5 11.dxc5

Nxc5 12.Bb5+ Ncd7 13.Ne5 Qc7 14.Qd4  
 Rd8 Daring/Provocative play - and typical  
 Topalov. Should White take the 'a' Pawn?  
 15.Bd2 [Both 15.Qxa7 Bd6 16.f4; and  
 15.Nxd7 Nxd7 16.Qxa7 Bd6 17.f4 would  
 have accepted the challenge - and appear  
 quite playable.] 15...Qa5 16.Bc6 Be7 [With  
 16...Bxc6 17.Nxc6 Qxa4 18.Nxd8 Kxd8 we  
 end up in a position similar to what actually  
 took place in the game - with a BIG differ-  
 ence - Queen's are on the board and Black's  
 King is still in the center.] 17.Rfc1 [17.b3  
 sacrifices nothing, and keeps the options  
 open. For instance White is still planning  
 'Rfc1' and with that Bishop/Queen relation-  
 ship intact, a possible 'a3'. Admittedly with  
 17...0-0 18.Bxd7 Nxd7 19.Nxd7 Bc6 20.Nac5  
 Bxc5 21.Qxc5 Qxc5 22.Nxc5 Rxd2 23.a3  
 White is hardly winning.] 17...Bxc6 18.Nxc6  
 Qxa4 19.Nxd8 Bxd8 20.Qxb4?! I don't think  
 so. White has a slight material deficit and  
 should keep the energy level up by avoiding  
 the exchange of Queens. [He would still win  
 the 'b' Pawn with 20.b3 Qb5 21.Bxb4 when  
 Queens are on the board and Black still has  
 to solve his "King in the center" problem.]  
 20...Qxb4 21.Bxb4 Nd5 22.Bd6 f5 Black is  
 better. Maybe not winning, but with good  
 chances. 23.Rc8 N5b6 [23...N7b6 allows  
 24.Rb8 to be followed by a possible 'Rb7'  
 when extracating the Rook for Black's  
 innards is more difficult.] 24.Rc6 Be7 25.Rd1  
 Kf7 26.Rc7 Ra8 27.Rb7 Ke8 This loss of  
 tempo may not be critical. [27...a5 immedi-  
 ately would remove a target and start to

pressure the Queenside ala "minority attack".] 28.Bxe7 Kxe7 29.Rc1 a5 30.Rc6 White's Rooks are attempting to invade 30...Nd5 but these Knights are firmly rooted. 31.h4?! What is this? [Centralization beginning with 31.Kf1 seems more to the point.] 31...h6 32.a4?! and now giving Black one unit holding back two. This coupled with a potential outpost on 'b4' for a Black Knight is making things very easy for Topalov. The only reasoning I can see behind this move is to stabilize a "target" on 'a5'. But if that is so, how is White going to attack it? 32...g5 33.hxg5 hxg5 Did White accomplish anything by "advancing" on the Kingside? Best case scenario is that a set of Pawns was traded off. However there "is" an open file left and - who knows - Black might be able to use it. 34.Kf1 g4 35.Ke2 N5f6 Now eyeing the outpost on 'e4' - assisted a bit by the 'g4' Pawn. 36.b3 Ne8 37.f3 g3! Topalov is keeping winning chances alive by keeping Pawn exchanges to a minimum. 38.Rc1 Nef6 39.f4?! I don't believe in this move. Look at the other potential outpost on 'e4' for a Black Knight. White should just sit tight and see if Black can break through. [An attempt to utilize the open 'h' file with 39.Rh1 Kd6 40.Rh3 Kc6 41.Rb5 Nd5 42.Kd2 Nc7 leaves White with a burnt Rook.] 39...Kd6 40.Kf3 Nd5 41.Kxg3? White puts his King on an exposed square both to a Rook on the 'g' file and a Knight outpost on 'e4'. Kramnik is unrecognizable in this game. [41.Rb5 isn't great - but it's something.] 41...Nc5 Lights

out. 42.Rg7 Attempting to cover his King. But White was the one who opened the Kingside anyway, and especially the 'g' file with that capture on 'g3'. 42...Rb8 [42...Nxe3 can't be bad either, but Topalov is going to strike with all of his pieces.] 43.Ra7 The 'a5' Pawn is now meaningless. 43...Rg8+ 44.Kf3 Ne4 Hide your eyes - it gets bloody from here. 45.Ra6+ Ke7 46.Rxa5 Rg3+ 47.Ke2 Rxe3+ 48.Kf1 Rxb3 49.Ra7+ Kf6 Snuggly tucked away. 50.Ra8 Nxf4 Everything is falling. 51.Ra1 This isn't so much a "Rook behind the passed Pawn", as it is a waiting/hoping for a blunder from the Black forces. 51...Rb2 52.a5 Rf2+ It's all downhill from here. [52...Rf2+ 53.Kg1 (53.Ke1 Nd3+ 54.Kd1 Nc3#) 53...Rxc2+ 54.Kf1 (54.Kh1 Ng3#) 54...Rf2+ 55.Kg1 Ne2+ 56.Kh1 N4g3#] 0-1

(3) Topalov (2814) - Kramnik (2743)  
WCC 2006 Elista (9), 07.10.2006  
[Davis,Loal]

1.d4 d5 2.c4 c6 3.Nf3 Nf6 4.e3 Bf5 5.Nc3 e6 6.Nh4 Bg6 7.Nxg6 hxg6 8.a3 Nbd7 9.g3 Be7 10.f4 White is going for the "big clamp". 10...dxc4 11.Bxc4 0-0 12.e4 b5 13.Be2 b4 Here we go again. Both players have executed this "little thrust" at various times during the match. This strives to get in 'c5' quickly. But if 'c5' is not (or cannot be) played, then Black may find that he is sitting back and nursing a crippled set of Pawns on the Queenside. 14.axb4 Bxb4 15.Bf3 Directed against the 'c5' break. 15...Qb6 16.0-0 e5

17.Be3 Rad8 18.Na4! Good. White removes that diagonal/pin relationship to his Bishop/King. 18...Qb8 19.Qc2 Turning the heat to the Queenside Pawns while supporting the center. Black has been outplayed. 19...exf4?! [I think 19...exd4 and removing the more central Pawn is correct. Kramnik appears to be floundering; if not, can someone please explain retreating the Queen to an exposed square coupled with a Pawn capture that loses a tempo the next move.] 20.Bxf4 Qb7 21.Rad1 Rfe8 22.Bg5 Be7 23.Kh1 White is revving up for thrusts all over the board. 23...Nh7 24.Be3! Bg5 25.Bg1! The reason for the "exclams" on White's last two moves - and yes they appear to retreat - is that Black is cramped. Bishop are long range weapons that can function well from the rear lines; so can Rooks and Queens. White is leaving Black's pieces stepping on their toes in minimal space capacity. In a cramp - don't solve your opponent's problems. 25...Nh8 26.h4 Be7 27.e5 A further cramp while liberating the light squared Bishop. Risk factor - should this attack fail, White will be left with holes (Pawn weaknesses) all over the place. Well - welcome to the world of "Attack". 27...Nb8 This Steinitzian retreat was prompted by White's threat of 'd5'. If, to stop the crippling 'd6', Black should exchange Pawns, then 'Bd5' hits the Queen - and 'f7'. 28.Nc3 Bb4 29.Qg2 [The immediate 29.d5 Rxe5 30.dxc6 Rxd1 31.cxb7 Rxf1 32.Kg2 is better for White, but does relieve the cramp and liber-

ate the Black forces a bit; Kramnik might be able to more easily reach time control - move 40. As the text is also very good, this "razzledazzle" is not really necessary. Kramnik was in severe time pressure. By keeping Black in his cramp, Topalov was augmenting the pressure on all fronts. By the way - notice that White's last move covers the 'f1' Rook - the previous variation does not work now - so once again, 'd5' is "on".] 29...Qc8 30.Rc1 Bxc3 Attempting to close down the relationship between Rook and Queen. However it does relinquish the last of Black's Bishops. 31.bxc3 Ne6 32.Bg4 Qc7 33.Rcd1 Preparing the 'c4/e5' steamroller. 33...Nd7 34.Qa2 White is climbing all over the position. Notice the "through the walls" relationship. Queen and Rook on 'f7' - supplemented by the 'g4' Bishop. And still White plays no Pawn breaks; he just threatens to play them - pressure/pressure/pressure. 34...Nb6 35.Rf3 The last cannon is coming into play. 35...Nf8 36.Rdf1 Re7 37.Be3 Wow - a beautiful and harmoniously executed onslaught. Black can resign. 37...Nh7 38.Rxf7 Nd5 [Of course 38...Rxf7 39.Rxf7 Qxf7 40.Be6 wraps things up nicely.] 39.R7f3 [39.Be6 was very much to the point.] 1-0

(4) Kramnik (2743) - Topalov (2813)  
 WCC 2006 Elista (10), 08.10.2006  
 [Davis,Loal]

1.d4 Nf6 2.c4 e6 3.Nf3 d5 4.g3 The Catalan Opening - again. 4...Bb4+ 5.Bd2 Be7 6.Bg2

0-0 7.0-0 c6 8.Bf4 Nbd7 9.Qc2 a5 [9...Nh5 10.Bc1 f5 enters a S tonewall-type of Pawn structure - and actually doesn't look too bad. It certainly slows down any 'e4' aspirations that White may have.] 10.Rd1 Nh5 11.Bc1 b5 This is sure a lot of Pawn moves for Black - and not a lot of piece development behind them. Also - "a little bit on the Kingside" (Nh5), "a little bit on the Queenside" (a5/b5) is suspect. 12.cxd5 cxd5 13.e4! dxe4 [13...Bb7 may appear a good developing move - but only if White exchanges on 'd5' or allows Black to open up the 'd5' square with 'de' himself. But with 14.e5 White would should down the center and prepare for an 'f5' (base of the Pawn chain) break. This coupled with the (now) misplaced Knight on 'h5' would be a rough go for Black.] 14.Qxe4 Kramnik is doing very well here - and this game shows that he definitely "can" attack when he wants to. Yes - White has an isolated Pawn - AND an excellent position for it. White is going for the center and opening lines. Look at that Bishop on 'g2'. Black has big problems to solve - why? - look back to 'a5/b5'. 14...Rb8 15.Qe2 Good - Queen out of shooting range with an eye on 'b5' and Mister "on the rim" (h5). 15...Nhf6 16.Bf4 Rb6 17.Ne5 Nd5 Topalov is attempting to cover up his Queenside weaknesses - especially 'c6'. [The mechanical - "get the next piece into play" of 17...Bb7 drops a Pawn to 18.Bxb7 Rxb7 19.Nc6 Qe8 20.Nxa5] 18.Bxd5! White parts with his beautiful Bishop, but destroys Black's ideas

of a 'd5' outpost - oh - and wins a Pawn. 18...exd5 19.Nc3 Nf6 20.Nxb5 Ba6 21.a4 Ne4 Looks pretty. [But Black is going to need all pieces in play if he expects to find compensation for his Pawn minus. 21...Re8 ] 22.Rdc1 'c6' is still soft. 22...Qe8 23.Rc7 Bd8 24.Ra7 [24.Rd7 is also good. 24...f6 25.Qg4 g6 (25...Be7 26.Nc7) 26.Qh3 h5 27.Rxd8 Qxd8 28.Nxg6 Rf7 (28...Re8 29.Bc7) 29.Qxh5 Rh7 30.Qg4 Rg7 31.Bc7 Rxc7 32.Nxc7 Qxc7 33.Ne7+ Kf8 34.Nxd5 and Black is getting picked apart.] 24...f6? Horrible. While watching this game, Kasparov saw 'f6' and said. "But doesn't that lose? Of course it loses!" [With the better 24...Bxb5 25.axb5 Qxb5 26.Qxb5 Rxb5 27.Ra2 White enjoys a slight plus - BUT - Black may well be able to hold. Topalov shows a "glaring" weakness in this game. He doesn't appear to have the patients to defend slightly inferior positions. That is not a chink in Kramnik's armor.] 25.Nd7 What was Topalov thinking? 25...Rf7 26.Nxb6 Rxa7 27.Nxd5 Rd7 28.Ndc3 Rxd4 29.Re1 [29.f3 is a killer.] 29...f5 30.Qc2 [And still 30.f3 ] 30...Rb4 31.Nd5 Rxb5 32.axb5 Qxb5 33.Nc7 Qc4 34.Qd1 [34.Qxc4+ Bxc4 35.Ra1 is very simple.] 34...Bxc7 35.Qd7 h6 36.Qxc7 Qb4 37.Qb8+ Qxb8 38.Bxb8 Nd2 39.Ra1 g5 40.f4 Nb3 41.Ra3 Bc4 42.Bc7 g4 43.Bxa5 1-0



# GAMES FROM MISSOURI PLAYERS

E-mail games to [kfee@kc.rr.com](mailto:kfee@kc.rr.com) in Chessbase or pgn format

Jimmy Yates, 1725 - Sean Baker, 2043

2006 Missouri Open-Open

1.Nf3 Nf6 2.g3 b6 3.Bg2 Bb7 4.0-0 e6 5.d3 d5 6.Nbd2  
c5 7.c3 Nc6 8.e4 dxe4 9.dxe4 Be7 10.Qe2 0-0 11.e5  
Nd5 12.a4 Qc7 13.h4 Rfd8 14.Re1 Na5 15.Ne4 Nb3  
16.Rb1 Qd7 17.Nfg5 Rab8 18.Qh5 Bxg5 19.Bxg5  
Rdc8 20.Rbd1 c4 21.Nf6+ gxf6 22.Bxf6 Nxf6 23.exf6  
Qxa4 24.Qg5+ Kf8 25.Qg7+ Ke8 26.Qg8# 1-0

Ed Baur - Nick Manley, 2006 Missouri Open-Reserve

1.e4 e5 2.Nf3 Nc6 3.d4 exd4 4.Bc4 Bc5 5.0-0 Nf6  
6.e5 Ng4 7.Bf4 0-0 8.h3 Nh6 9.Bxh6 gxh6 10.Nbd2  
d5 11.exd6 Bxd6 12.Ne4 Re8 13.Nxd6 Qxd6 14.Qd3  
Qg6 15.Nh4 Qxd3 16.Bxd3 Ne5 17.Rfe1 Bd7 18.Bf5  
c5 19.Rad1 Bc6 20.Be4 Rad8 21.f4 Bxe4 22.Rxe4  
Nc4 23.Rxe8+ Rxe8 24.Kf2 Ne3 25.Re1 Kf8 26.Nf3 f6  
27.c3 Nc2 28.Rxe8+ Kxe8 29.cxd4 cxd4 30.Ke2 Ke7  
31.a3 Kd6 32.Kd3 Ne3 33.g3 Kd5 34.Nxd4 Nc4 35.b3  
Nxa3 36.Nf5 a5 37.Ne3+ Kc5 38.Kc3 Nb5+ 39.Kb2  
Nd6 40.Ng4 Ne4 41.Nxh6 Nxg3 42.Ng4 Ne4 43.Ka3  
b5 44.h4 Kd4 45.h5 Kd3 46.f5 Ke2 47.Nh6 Kf3 48.Nf7  
Kg4 49.Nd8 0-1

Bob Spies, 1766 - Jim Davies, 2014

2006 Missouri Open-Open

1.e4 c5 2.Nc3 Nc6 3.Nf3 g6 4.d4 cxd4 5.Nxd4 Bg7  
6.Be3 d6 7.Qd2 Nf6 8.f3 0-0 9.0-0-0 Bd7 10.Bh6  
Nxd4 11.Bxg7 Nxf3 12.gxf3 Kxg7 13.h4 Qa5 14.Be2  
Rac8 15.Rdg1 h5 16.Rg5 Rc5 17.Rhg1 Rfc8 18.Rxc5  
Rxc5 19.Qd4 Kh7 20.Kb1 Qc7 21.f4 Bg4 22.Bxg4  
hxg4 23.Qd3 Rh5 24.Nd5 Nxd5 25.exd5 Qc5 26.Qg3  
Rxd5 27.Qxg4 Rd2 28.Rc1 Qd5 29.b3 Rg2 30.Qd7  
Re2 31.Qh3 Qe4 32.h5 Kg7 33.hxg6 fxg6 34.Qc3+  
Kf7 35.Qh3 Re3 36.Qh7+ Ke8 37.Rg1 Re1+ 38.Rxe1  
Qxe1+ 39.Kb2 Qg3 40.Qh8+ Kf7 41.Qd4 b6 42.Kc1  
Qe1+ 43.Kb2 Qa5 44.b4 Qf5 45.a3 Qf6 46.Kc3 Ke6  
47.Kd3 Qxd4+ 48.Kxd4 Kf5 49.Ke3 d5 0-1

Sean Baker, 1677 - Tim Steiner, 2043

2006 Missouri Open-Open

1.Nf3 Nf6 2.b3 d6 3.d3 e5 4.Bb2 g6 5.e4 Bg7 6.Nbd2  
0-0 7.Be2 Nh5 8.0-0 Nc6 9.Re1 Nf4 10.Bf1 g5 11.Kh1  
g4 12.Ng1 h5 13.g3 Ng6 14.Be2 d5 15.f3 h4 16.gxh4  
Qxh4 17.fxg4 Nf4 18.Bf3 d4 19.Rf1 Bf6 20.Qe1 Qh6  
21.Ne2 Bh4 22.Qd1 Kg7 23.Nxf4 exf4 24.Bg2 Bg3  
25.h3 f6 26.Qe2 Ne5 27.Bxd4 Bxg4 28.Nf3 Rae8  
29.Bxe5 fxe5 30.Kg1 Bxh3 31.Bxh3 Qxh3 32.Qg2  
Qh6 33.Rfd1 Qb6+ 34.Kf1 Rh8 35.d4 Kf8 36.Ke2  
exd4 37.Rxd4 Rh2 38.Nxh2 Qxd4 39.Rb1 Qxe4+  
40.Kf1 Qe1+ 0-1

Gary White - Dan Huff

2006 Missouri Open-Open

1.d4 f5 2.Nf3 Nf6 3.g3 g6 4.Bg2 Bg7 5.0-0 0-0 6.c4 d6  
7.Nc3 Qe8 8.d5 e5 9.dxe6 Bxe6 10.Nd4 c6 11.Nxe6  
Qxe6 12.Qb3 Rf7 13.Bf4 Na6 14.Rad1 Rd8 15.Rd2  
Nc5 16.Qb4 Nfe4 17.Nxe4 fxe4 18.Be3 b6 19.Rfd1  
Be5 20.a4 Rfd7 21.h4 Qe7 22.Kh2 Qxh4+ 23.Bh3 Rf7  
24.Kg2 Qe7 25.a5 bxa5 26.Qa3 Rb8 27.Bxc5 dxc5  
28.Rd7 Qf6 29.Rxf7 Qxf7 30.Rd7 Qf6 31.Qxc5 Rf8  
32.Qxa7 Rf7 33.Rxf7 Qxf7 34.Qxf7+ Kxf7 35.Bd7 c5  
36.b3 Kf6 37.e3 Bc3 38.f4 exf3+ 39.Kxf3 Ke5 40.Bc6  
Be1 41.Bd5 h6 42.g4 g5 43.Bf7 Bb4 44.Bh5 Ba3  
45.Be8 1/2-1/2

Francis Crow, 1767 - Tim Steiner, 2043

2006 Missouri Open-Open

1.d4 Nf6 2.c4 g6 3.Nc3 Bg7 4.e4 0-0 5.Nf3 d6 6.Be2  
e5 7.0-0 exd4 8.Nxd4 Nc6 9.Be3 Re8 10.f3 Ne5  
11.Qd2 c6 12.Nc2 Be6 13.Rfd1 Bxc4 14.Qxd6 Qxd6  
15.Rxd6 Bxe2 16.Nxe2 Nc4 17.Rd3 Nxb2 18.Rb3  
Nc4 19.Bd4 b6 20.Rc3 Na5 21.Rd3 Rad8 22.Rad1 c5  
23.Bc3 Nc6 24.Rd6 Rxd6 25.Rxd6 Ne5 26.Ne3 h5  
27.a4 Nfd7 28.f4 Ng4 29.Nxg4 hxg4 30.Bxg7 Kxg7  
31.Nc3 Nf6 32.e5 Ng8 33.Nd5 Rc8 34.Rd7 c4 35.e6  
c3 36.Rxf7+ Kh6 37.Nxc3 Rxc3 38.Kf2 Rc6 39.Rxa7  
Rxe6 40.Ra6 Ne7 41.a5 Nd5 42.axb6 Rxb6 1-0

Francis Crow, 1767 - Dan Huff, 1966

2006 Missouri Open-Open

1.e4 e6 2.Nf3 d5 3.exd5 exd5 4.d4 Bg4 5.Bd3 Nc6  
6.c3 Qd7 7.0-0 0-0 8.b4 Bd6 9.Nbd2 Nf6 10.b5 Na5  
11.Qa4 b6 12.Ne5 Bxe5 13.dxe5 Nh5 14.Nb3 c5  
15.bxc6 Nxc6 16.Bb5 Kc7 17.Ba3 Be6 18.Bd6+ Kb7  
19.Nc5+ bxc5 20.Qa6+ 1-0

Earney Pattrick, 1745 - Gary White, 2085

2006 Missouri Open-Open

1.f4 d5 2.d4 Nf6 3.e3 c5 4.Nf3 Nc6 5.Ne5 Bd7 6.a3  
e6 7.Bb5 Nxe5 8.fxe5 Bxb5 9.exf6 Qxf6 10.Nc3 Ba6  
11.Ne2 Bd6 12.c3 0-0 13.Qc2 Rac8 14.g3 Qf3 15.Rg1  
Rfe8 16.Nf4 e5 17.Qg2 Qxg2 18.Nxg2 exd4 19.Bd2  
dxe3 20.Nxe3 d4 21.Kf2 dxe3+ 22.Bxe3 Re6 23.Rad1  
Rce8 24.Rge1 b6 25.h3 f6 26.Rd2 Bxg3+ 0-1

Tom Gaul, 1791 - Earney Pattrick, 1745

2006 Missouri Open-Open

1.Nf3 e6 2.b3 c5 3.Bb2 Nc6 4.e3 a6 5.c4 d5 6.Be2  
Nf6 7.0-0 Be7 8.d4 0-0 9.Nc3 h6 10.Rc1 Bd7 11.Bd3  
Nb4 12.Bb1 b5 13.a3 cxd4 14.Nxd4 Nc6 15.cxd5  
exd5 16.Nxd5 Nxd4 17.Qxd4 Be6 18.Nxe7+ Qxe7  
19.b4 Rfd8 20.Qh4 Rd5 21.Bxf6 Qxf6 22.Qxf6 gxh6  
23.Be4 Rad8 24.Bxd5 Bxd5 25.Rfd1 Rd7 26.Rc5 Be6  
27.Rxd7 Bxd7 28.Rc7 Be6 29.Rc6 Kg7 30.Rxa6 f5  
31.a4 1-0

**Jake Amann, 1108 - Charles Ward, 1396**  
**2006 Missouri Open-Reserve**

1.e4 c5 2.Nf3 Nc6 3.Bb5 d6 4.d3 Bd7 5.Bxc6 Bxc6  
6.c4 e6 7.Qe2 Qc7 8.Nc3 a6 9.a4 Be7 10.0-0 Nf6  
11.Bg5 Ng8 12.Bxe7 Nxe7 13.Rfb1 0-0 14.b4 b6  
15.b5 axb5 16.axb5 Bb7 17.g3 d5 18.exd5 exd5  
19.Qe5 Qd8 20.Rxa8 Bxa8 21.Ra1 dxc4 22.Rxa8  
Qxa8 23.Qxe7 Qxf3 24.Qd6 Qxd3 25.Nd5 Qb1+  
26.Kg2 Qe4+ 27.Kh3 Qe6+ 28.Qxe6 fxe6 29.Ne3 c3  
30.Kg2 Rd8 0-1

**Ray Birt, 1817 - Sean Baker, 1677**

**2006 Missouri Open-Open**

1.e4 c5 2.Nf3 Nc6 3.Bb5 Qc7 4.0-0 a6 5.Bxc6 Qxc6  
6.Re1 e6 7.a4 Nf6 8.Nc3 d5 9.d3 Be7 10.Ne5 Qd6  
11.Bf4 Qd8 12.exd5 Nxd5 13.Nxd5 exd5 14.Qh5 0-0  
15.Re3 Bf6 16.Rae1 g6 17.Qd1 d4 18.R3e2 Be6  
19.Bh6 Re8 20.Qd2 Qd5 21.Ng4 Bh8 22.b3 Qf5  
23.h3 Bd7 24.Rxe8+ Rxe8 25.Rxe8+ Bxe8 26.Qe2  
Qe6 27.Qf3 f5 28.Nh2 Bc6 29.Qd1 g5 30.Qh5 Qg6  
31.Qxg5 Qxg5 32.Bxg5 Be5 33.Nf1 Kf7 34.Nd2 b5  
35.axb5 Bxb5 36.Nc4 Bc7 37.Bd2 Ke6 38.Kf1 Kd5  
39.Ke2 Bc6 40.Ba5 Bxa5 41.Nxa5 Ba8 42.Kf3 Ke5+  
43.Kg3 f4+ 44.Kh2 Kd6 45.g4 Bf3 46.Nc4+ Kc7 47.g5  
Bd1 48.Na3 Kb6 49.h4 Ka5 50.Kg2 Bh5 51.f3 Kb4  
52.Nb1 Kb5 53.Kf2 Kc6 54.Nd2 Kb5 55.Ne4 Kb4  
56.Nf6 Bg6 57.h5 Bf5 58.Nd5+ Ka3 59.Ke2 Kb2  
60.Kd2 Bd7 61.Nxf4 Bc6 62.g6 hxg6 63.h6 g5 64.Ne2  
Bxf3 65.h7 Bxe2 66.Kxe2 Kxc2 67.h8Q Kxb3 68.Qa8  
c4 69.dxc4 Kxc4 70.Qxa6+ Kd5 1-0

**Alan Manker, 1338 - Kellen Cross, 984**

**2006 Missouri Open-Reserve**

1.e4 d5 2.exd5 Qxd5 3.Nc3 Qd6 4.h3 Nf6 5.Nf3 c6  
6.d4 Bf5 7.Bd3 Bxd3 8.Qxd3 e6 9.Be3 Nbd7 10.0-0  
h6 11.a3 Qc7 12.Rfe1 Bd6 13.b4 b5 14.Rad1 a5  
15.Na2 Nb6 16.c3 Nc4 17.Bc1 a4 18.Nd2 Nxd2  
19.Bxd2 0-0 20.Nc1 Nd7 21.Ne2 Nb6 22.Qf3 Nc4  
23.Bc1 Rfe8 24.Ng3 Bxg3 25.fxg3 Qb6 26.Kh1 Re7  
27.g4 f6 28.Qe4 Rae8 29.Qg6 Kh8 30.h4 Qc7 31.Rd3  
Rf7 32.g5 Ref8 33.gxh6 gxh6 34.Qxh6+ Kg8 35.Bf4  
Qb7 36.Rg3+ Rg7 37.Rxg7+ Qxg7 38.Rxe6 Qxh6  
39.Bxh6 Rf7 40.Bc1 Rh7 41.g3 Kf7 42.Rxc6 Rg7  
43.Kh2 Rg4 44.Rc5 Re4 45.Rxb5 Re2+ 46.Kh3 Re1  
47.Rc5 1-0

**Tim Campbell, 1323 - Spencer Conklin, 1316**

**2006 Missouri Open-Reserve**

1.d4 d5 2.Nc3 Nf6 3.f4 Bf5 4.e3 e6 5.a3 Ne4 6.Nxe4  
Bxe4 7.Nf3 Be7 8.Bd3 Nd7 9.0-0 0-0 10.Bxe4 dxe4  
11.Ne5 Nf6 12.Kh1 c5 13.c3 cxd4 14.exd4 Rc8  
15.Rg1 Bd6 16.g4 Bxe5 17.fxe5 Nd5 18.g5 Ne7  
19.Qh5 Ng6 20.Rg3 Re8 21.Rh3 Nf8 22.Rg3 Qd5  
23.Be3 Qc6 24.Rf1 Re7 25.Rg2 Qc4 26.Rgf2 Ng6  
27.Qg4 Qd3 28.Qh3 Rc6 29.Rd2 Qc4 30.Kg1 a5  
31.Qg4 Qd5 32.h4 b5 33.Rdf2 Rc8 34.h5 Nf8 35.g6

fxg6 36.h6 a4 37.hxg7 Kxg7 38.Qg5 Qd8 39.Qh6+  
Kg8 40.Bg5 Qe8 41.Rxf8+ Qxf8 42.Rxf8+ 1-0

**Isaiah Jesch, 1637 - William Tong, 1496**

**2006 Missouri Open-Reserve**

1.e4 c5 2.Na3 d6 3.c3 Nf6 4.g3 Nxe4 5.Qa4+ Bd7  
6.Qxe4 Bc6 7.Bb5 g6 8.d4 Bg7 9.Be3 a6 10.Bxc6+  
Nxc6 11.dxc5 dxc5 12.Bxc5 Qa5 13.Qe3 0-0 14.Nf3  
Rab8 15.0-0 b6 16.Bd4 e5 17.Nc4 Qd5 18.Nfxe5  
Nxe5 19.Nxe5 Rfe8 20.c4 Qd8 21.f4 f6 22.Rfe1 fxe5  
23.Bxe5 Bxe5 24.fxe5 Qc8 25.b3 Rb7 26.Re2 Rc7  
27.Rae1 Re6 28.Qd4 Rce7 29.Qd5 Kg7 30.Kg2 Qc5  
31.Qxc5 bxc5 32.h4 Rc6 33.g4 Kf7 34.Rf1+ Ke8  
35.g5 Ree6 36.Kg3 Ke7 37.Rf6 Rc7 38.Kf4 Rd7  
39.a3 Rd4+ 40.Re4 Rd3 41.Re3 Rd4+ 42.Kg3 Rd1  
43.b4 Rd4 44.Rf4 Rxf4 45.Kxf4 cxb4 46.axb4 Rc6  
47.Re4 Ke6 48.Rd4 Rb6 49.c5 Rb5 50.c6 Rb6  
51.Rc4 Kd5 52.c7 Kxc4 53.c8Q+ Kxb4 54.e6 a5  
55.e7 a4 56.e8Q a3 57.Qe4+ Ka5 58.Qec4 Rb5  
59.Qa8+ 1-0

**Nick Manley, 1549 - Thomas Clark, 1375**

**2006 Missouri Open-Reserve**

1.e4 d6 2.d4 g6 3.Nf3 Bg7 4.Bc4 c6 5.Nc3 b5 6.Bb3  
Nf6 7.e5 dxe5 8.Nxe5 0-0 9.Bf4 Bb7 10.Qd2 Nbd7  
11.0-0-0 b4 12.Na4 Nxe5 13.Bxe5 a5 14.Nc5 Ba6  
15.Nxa6 Rxa6 16.Qe2 Ra8 17.h4 h5 18.Kb1 a4  
19.Bc4 a3 20.b3 Nd5 21.Bxd5 cxd5 22.Bxg7 Kxg7  
23.g4 hxg4 24.Qxg4 Qc8 25.Qg3 Qf5 26.h5 Rac8  
27.Qe5+ Qxe5 28.dxe5 Rh8 29.h6+ Rxb6 30.Rxb6  
Kxb6 31.Rxd5 Rb8 32.Rd7 e6 33.Rxf7 Rd8 34.Kc1  
Rd5 35.Rb7 Rxe5 36.Rxb4 Re1+ 37.Kd2 Ra1 38.Ra4  
Rxa2 39.Kc3 Ra1 40.b4 a2 41.Kb2 Rf1 42.Rxa2 Rxf2  
43.b5 Rf7 44.c4 g5 45.b6 g4 46.Kb3 Kg7 47.Rg2 Kf6  
48.Rf2+ Kg6 49.Rxf7 Kxf7 50.b7 g3 51.b8Q g2  
52.Qg3 1-0

**Frank Smith, 1556 - Tom Gaul, 1791**

**2006 Missouri Open-Open**

1.e4 e6 2.g3 d5 3.e5 c5 4.Nf3 Nc6 5.c3 Bd7 6.Bg2  
Qc7 7.d4 cxd4 8.cxd4 Bb4+ 9.Nc3 Nge7 10.0-0 a6  
11.a3 Bxc3 12.bxc3 Na5 13.Qc2 Bb5 14.Re1 Rc8  
15.Bb2 Nc4 16.Bf1 Nxb2 17.Bxb5+ axb5 18.Qxb2 0-0  
19.Rec1 Qc4 20.Qc2 Ra8 21.Ng5 g6 22.Nf3 f6  
23.Qd2 fxe5 24.Nxe5 Qc7 25.h4 Nc6 26.Re1 Nxe5  
27.Rxe5 Rf6 28.Qe3 Rf8 29.f4 Qd6 30.h5 Kf7  
31.Qe2 Qc6 32.Qd3 Qc4 33.Qxc4 bxc4 34.Rb1 Rb8  
35.Rb6 gxh5 36.Rxh5 Kg6 37.Re5 Ra8 38.Rxb7 Rxa3  
39.Rg5+ Kh6 40.Rgg7 Rxc3 41.g4 Rxf4 42.Rxh7+  
Kg6 43.Rbg7+ Kf6 44.Rf7+ Kg5 45.Rhg7+ Kh6  
46.g5+ Kh5 47.Rxf4 Rg3+ 48.Kh2 Rxc5 49.Rh7+ Kg6  
50.Rh3 e5 51.dxe5 Rxe5 52.Rg3+ Kh5 53.Kh3 Kh6  
54.Rf6+ Kh5 55.Rf8 Re6 56.Rf5+ Kh6 57.Rxd5 Re4  
1-0



# REGIONAL CHESS CLUBS

## Kansas City Area Clubs

E-mail [Kfee@kc.rr.com](mailto:Kfee@kc.rr.com) with changes

**The Chess Club.** Location: Vivion West Shopping Center (North KC) 2314 NW Vivion, Riverside MO 64150. Meets Wed. Fri. Sat, 6:00 to 12:00 PM Single visit \$5, Contact: Kenneth Fee (816) 835-7529 or [chessclub@powerpawm.net](mailto:chessclub@powerpawm.net). Club Web site: [www.powerpawm.net](http://www.powerpawm.net)

**Westport Chess Club.** Location: Westport Flea Market at 817 Westport Rd., Kansas City, MO 64111 (just east of the intersection of SW Trafficway and Westport Rd.) year-round basis. Tuesday's 6:30 to 11:00 PM \$2 fee adults, \$1 under 18 Contact: Bill Mendus [wmendus@swbell.net](mailto:wmendus@swbell.net)

**Rockhurst Community Chess Club.** Location: Rockhurst University Community Center, 5401 Troost Ave., Kansas City MO 64110 Saturdays 10:00am to 1:00pm Contact: Alicia Douglas (816) 501-4306

**Kansas City (KS) Public Library.** Location: 625 Minnesota, Kansas City KS Meets: Wednesdays 5:30 to 8:00 PM Contact: Brooke Leavitt (913) 551-3280

## ST. LOUIS AREA CLUBS

**St. Louis Chess Club.** Location: St. Louis Bread Company 6630 Delmar Ave. (U-City) Chess played every night 6-9pm Most players come on weekends Contact: Joseph Garnier at [chessoholic@sbcglobal.net](mailto:chessoholic@sbcglobal.net)

**Mid Rivers Mall Chess Club.** Location: Food Court, Mid Rivers Mall, Mid Rivers Mall Drive, St. Peters. Chess played every Saturday, 8am-noon. Contact: e-mail Luke Brodlund at [kalomundi\\_00@yahoo.com](mailto:kalomundi_00@yahoo.com)

**St Peters Chess Club.** Location: St. Peters Mathnasium. 235 Salt Lick Road, St. Peters  
Meets: every Friday night starting at 6pm. Contact: e-mail Tim Nesham at [tim.nesham@gm.com](mailto:tim.nesham@gm.com)

**Soulard Chess Club.** Location: Nadine's in Soulard, 1931 S. 12th St. (314) 436-3045 Meets: Tuesdays 6:30 Contact: Jeff Vollmer at [jrvollm@sbcglobal.net](mailto:jrvollm@sbcglobal.net)

**Indian Trails Branch Library.** Location: St. Louis County Library 8400 Delport Drive (314) 428-5424 Meets Tuesdays 3:30 PM. Contact: any library employee Library information and map.

## CLUBS IN OTHER AREAS OF MISSOURI

**Mineral Area Chess Club.** Location: Monday Nights from 7 to 9 p.m. at the Tourist Center on the Mineral Area College Campus in Park Hills. Contact Stan Jackson, 573 358-1996, or James Lyon, 573 756-6009, or by e-mail at [jaalyon@sbcglobal.net](mailto:jaalyon@sbcglobal.net)

**Columbia -- Univ. of Missouri Chess Club.** Location: Memorial Union (518 Hitt Street) Room S203 May-August: Lakota's Coffee, 24 S. Ninth St. Mondays 7 to 10 PM Contact: C. Ward at [czar8196@tranquility.net](mailto:czar8196@tranquility.net) Website: [www.students.missouri.edu/~mchess](http://www.students.missouri.edu/~mchess)

**Jefferson City -- Jefferson City Chess Club.** Location: Thomas Jefferson Middle School, Room 800 1201 Fairgrounds Rd, Jefferson City, MO Meets: Wednesdays 7 to 9pm Contacts: E-mail Bob Howe at [bdhowe@yahoo.com](mailto:bdhowe@yahoo.com) or Thomas Rehmeier at [jcchess89@yahoo.com](mailto:jcchess89@yahoo.com) or Cell Phone: 573-291-0852. Club Website: <http://www.chess.jpkoonce.net>

**Springfield - MO State Univ. Chess Club.** Location: Plaster Student Union, room 317-A. Meeting hours: Mondays 7-10pm Contact: Nick Beatty at [Nbeatty@missouristate.edu](mailto:Nbeatty@missouristate.edu) Club Website: [www.organizations.missouristate.edu/chess](http://www.organizations.missouristate.edu/chess)

**Rolla -- UMR Chess Club.** Location: Burgess Room - 2nd floor Havener Center. Meets: Tuesdays 6PM Student President: Alex Marler Contact/Info: e-mail Selden Trimble at [strimble@rollanet.org](mailto:strimble@rollanet.org)

**Springfield -- Springfield Chess Club.** Location: Southside Senior Center 2215 S. Fremont Ave., Springfield, MO Meets: Friday 6:30 to 11PM USCF-rated events. Contact: Jim Baumlin (417) 831-6585 Website: [www.geocities.com/SpringfieldChessClub](http://www.geocities.com/SpringfieldChessClub)

# MISSOURI TOURNAMENT LIFE

Visit the official Missouri Tournament Clearinghouse  
Website for future events (<http://www.mochess.org>)

Jan. 27 ISAAC KASHDAN OPEN - Columbia 3SS, G/75. UMC Memorial Union room N208, 518 Hitt St., Columbia MO. Directions: From I-70 exit 126, south on Providence, east on Rollins, north on Hitt. Reg: 9:30-10:15. Rds: 10:30-1:15-4:00. EF: \$1, NO PRIZES - just the satisfaction of playing well. Info: Charles Ward, 573-443-6685, [czar8196@tranquility.net](mailto:czar8196@tranquility.net).

Feb 9 MATHNASIUM QUICK NIGHT - St. Peters 4SS, G15; Mathnasium, 235 Salt Lick Rd, St. Peters, MO 63376. Located in Dierbergs Plaza near intersection of Hwy 70 and 79. EF: \$5. MCA membership required - see Missouri Chess Association. \$5/40: \$100. \$55-25-20. Reg: 5:45pm - 6:15pm. Rds: 6:30, 7:15, 8:00, 8:45. Entries: Tim Nesham [tim\\_nesham@gmail.com](mailto:tim_nesham@gmail.com). Directions: Hwy 70 W to 79, turn left (South) about 1/4 mile on right in Dierbergs Plaza. NS NC W.

Feb 16-18th. KANSAS CITY OPEN (5SS 40/120 G60). The Chess Club at Vivion West Shopping Mall (North KC), 2314 NW Vivion Rd., Northmoor MO 64150. 816-505-1615. Reg: Fri 6-7PM Sat 9-10:30. RDS. Fri 7PM Sat 11/5 Sun 9/3. One 1/2 Point Bye. Ent \$35 by 2/14 \$49 Site. Prizes. \$700 Guaranteed!! Open 1st \$150 & \$50 Bonus Absolute Winner. U2000 1st \$100 2nd \$75 3rd \$25 Reserve 1st \$150 2nd \$100 3rd \$75 4th \$25. USCF/MCA/OSA. Winner qualifies for the 2007 Missouri State Championship Invitational Tournament. Entry/Info: Ken Fee 1537 Baker St. Liberty, MO 64068. PAYPAL to [chessclub@powerpawn.net](mailto:chessclub@powerpawn.net). Flyer at [www.powerpawn.net](http://www.powerpawn.net)

March 9 - MATHNASIUM QUICK NIGHT - St. Peters 4SS, G15; Mathnasium, 235 Salt Lick Rd, St. Peters, MO 63376. Located in Dierbergs Plaza near intersection of Hwy 70 and 79. EF: \$5. MCA membership required - see Missouri Chess Association. \$5/40: \$100. \$55-25-20. Reg: 5:45pm - 6:15pm. Rds: 6:30, 7:15, 8:00, 8:45. Entries: Tim Nesham [tim\\_nesham@gmail.com](mailto:tim_nesham@gmail.com). Directions: Hwy 70 W to 79, turn left (South) about 1/4 mile on right in Dierbergs Plaza. NS NC W.

March 17 - MIZZOU QUADS - Columbia 3RR, G/75. Memorial Union room N208, 518 Hitt St., Columbia, MO. Directions: From I-70 exit 126, south on Providence, east on Rollins, north on Hitt. Entry fee: \$20 if mailed by 3/10, \$25 at site. First prize each quad \$70. Site entries cash only. Reg: 9:30-10:15. Rds: 10:30-1:15-4:00. Entries/Info: Charles Ward, 2400 Cimarron Drive, Columbia, MO 65203, 573-443-6685.

Mar. 17, \$5 PLAY FOR RATING OPEN (3SS, Game/90), The Chess Club at Vivion West Shopping Mall (North Kansas City), 2314 NW Vivion Rd, Kansas City MO 64150. EF: \$5 by March 15th. \$10 onsite. Memb. Req'd: \$5. OSA. Reg: Between 9:30-10:00AM. Rds: 1st Round 10AM. One half-point bye. ENT: Ken Fee 1537 Baker St. Liberty, MO 64068 Club Phone 816-505-1615 PAYPAL to [chessclub@powerpawn.net](mailto:chessclub@powerpawn.net). INFO: [chessclub@powerpawn.net](mailto:chessclub@powerpawn.net). [www.powerpawn.net](http://www.powerpawn.net). Tournament Director; Wayne Bartlett.

Mar. 30, FRIDAY NIGHT QUICK CASH (3SS, Game/45), The Chess Club at Vivion West

Shopping Mall (North Kansas City), 2314 NW Vivion Rd, Kansas City MO 64150. EF: \$25 by March 28th. \$30 onsite. Memb. Req'd: \$5. OSA. \$\$GTD: \$75 1st Open. U2000 1st \$75 U1600 1st \$75. Accelerated pairings will be used. Reg: Between 6-7 PM. Rds: 1st Round 7PM. No Byes Available. ENT: Ken Fee 1537 Baker St. Liberty, MO 64068 Club Phone 816-505-1615 PAYPAL to chessclub@powerpawn.net. INFO: chessclub@powerpawn.net. Web: www.powerpawn.net.

Apr. 21, \$5 PLAY FOR RATING OPEN (3SS, Game/90), The Chess Club at Vivion West Shopping Mall (North Kansas City), 2314 NW Vivion Rd, Kansas City MO 64150. EF: \$5 by April 19th. \$10 onsite. Memb. Req'd: \$5. OSA. Reg: Between 9:30-10:00AM. Rds: 1st Round 10AM. One half- point bye. ENT: Ken Fee 1537 Baker St. Liberty, MO 64068 Club Phone 816-505-1615 PAYPAL to chessclub@powerpawn.net. INFO: chessclub@powerpawn.net. www.powerpawn.net. Tournament Director; Wayne Bartlett.

## MISSOURI SCHOLASTIC TOURNAMENT LIFE

Sat. Jan. 20th NEW YEAR SCHOLASTIC The Chess Club at Vivion West Shopping Mall (North Kansas City), 2314 NW Vivion Rd., Riverside MO 64150. Go to [www.powerpawn.net](http://www.powerpawn.net) for flyer.

Sat. Jan. 27 GATEWAY CHESS LEAGUE TOURNAMENT Lindbergh High School 4900 S. Lindbergh St. Louis, MO 63126 Go to [www.gatewaychess.org](http://www.gatewaychess.org) for flyer.

Sat. Feb. 10 GATEWAY CHESS LEAGUE ACTION TOURNAMENT Westminster Christian Academy 10900 Ladue Road St. Louis, MO 63141 Go to [www.gatewaychess.org](http://www.gatewaychess.org) for flyer.

Sat. Feb. 10th OAKHILL DAY SCHOOL SCHOLASTIC. The Chess Club at Vivion West Shopping Mall (North Kansas City), 2314 NW Vivion Rd., Riverside MO 64150. Go to [www.powerpawn.net](http://www.powerpawn.net) for flyer.

Sat. Feb. 24 MISSOURI SENIOR HIGH STATE CHAMPIONSHIP Lewis and Clark Middle School 325 Lewis and Clark Jefferson City, MO 65101 Go to [www.gatewaychess.org](http://www.gatewaychess.org) for flyer.

Sat. Mar. 3 MISSOURI JUNIOR HIGH (K-9) STATE CHAMPIONSHIP Lewis and Clark Middle School 325 Lewis and Clark Jefferson City, MO 65101. Go to [www.gatewaychess.org](http://www.gatewaychess.org) for flyer.

Sat. Mar. 17 BOLLINGER MEMORIAL TOURNAMENT. Wydown Middle School 6500 Wydown Boulevard St. Louis, MO 63105. Go to [www.gatewaychess.org](http://www.gatewaychess.org) for flyer.

Sat. Mar. 31st KCSCA CHAMPIONSHIP @ UMKC The University of Missouri at Kansas City (UMKC) campus; University Center; 5000 Rockhill Rd., KC, MO 64110

# Missouri State Championship Format

In order to participate for the Missouri State Championship, a player must win one of the qualifying tournaments during the year. The previous Missouri State Champion receives an automatic bid. Six players will play a five game round-robin at the 2007 Missouri Open.

The 2007 Missouri State Championship qualifying tournaments are as follows.

2006 Missouri Invitational won by Ron Luther

2006 Missouri Open won by Francis Crow

2007 Kansas City Open - February 16th-18th, 2007

2007 St. Louis Open -TBA

2007 Missouri Class - TBA in Columbia

2007 St. Louis Tournament - TBA



---

**Return Address**  
**The Chess Club**  
**2314 NW Vivion Road**  
**Riverside MO 64150-9424**