



MISSOURI CHESS ASSOCIATION

# MISSOURI CHESS BULLETIN

---

---

WWW.MOCHESS.ORG



GM Benjamin Finegold  
grabs his second straight  
Missouri Invitational  
Championship.

IM Goran Vojinovic  
sweeps the field  
at the Missouri Open  
and Chess Festival,  
Winning all three  
Championship events



Volume 38 Number Four—Fall 2011 Issue  
*Serving Missouri Chess Since 1973*



# TABLE OF CONTENTS

~Volume 38 Number 4 - Fall 2011~

<b>Recent News in Missouri Chess</b> .....	Pg 3
<b>Missouri Amateur and Invitational Report</b> .....	Pg 4-7
~ Bob Howe	
<b>Tournament Winners</b> .....	Pg 7
<b>Waldo Odak Memorial</b> .....	Pg 8-11
<b>Najdorf Sicilian</b> .....	Pg 12-13
~ IM Goran Vojinovic	
<b>US Championship News</b> .....	Pg 14
<b>Top Missouri Chess Players</b> .....	Pg 15
<b>Understanding the USCF Title System</b> .....	Pg 16-17
~ Walter High	
<b>Hall of Fame Opening</b> .....	Pg 18-19
<b>Two on Two Team Championship</b> .....	Pg 20
~ Mike Kummer	
<b>A Star is Born</b> .....	Pg 21
~ Joseph Garnier	
<b>Finding a Vision for Scholastic Chess</b> .....	Pg 22-23
~ Tim Campbell	
<b>Upcoming Tournaments</b> .....	Pg 24-25
<b>Chess Clubs around the State</b> .....	Pg 25
<b>Scholastic Schedule</b> .....	Pg 26
<b>Featured Game</b> .....	Pg 27
~ Al Howlett	
<b>Games from Missouri Chess Players</b> .....	Pg 28-29
<b>MCA Player of the Year</b> .....	Pg 30
<b>State Champions</b> .....	Pg 31
<b>Missouri Chess Hall of Fame</b> .....	Back Cover

Cover Photo: Top: GM Ben Finegold with the 2011 Missouri Invitational Plaque.

Bottom: TD Thomas Rehmeier (right) presents the Missouri Open Plaque to IM Goran Vojinovic .  
IM Vojinovic went undefeated in the Missouri Open, Missouri Quick, and Missouri Blitz Events.

## Missouri Chess Association: Mission Statement

As the Official State Affiliate of the United States Chess Federation, The Missouri Chess Association's mission is to promote, coordinate, and support chess activities throughout the State of Missouri. This should always to be accomplished with a fair and unbiased approach, protecting the rights and interests our Members, Tournament Directors, Organizers, and Chess Players in the great state of Missouri.

# Recent News in Missouri Chess



This was submitted via email from Edward Morris of Texas: Thanks to Mr. Morris for the information. "I'd like to mention to you folks that former Missouri champion, James M. Wright, passed away today (September 28th) at age 85 in Fort Worth Texas. Jim defeated Robert Steinmeyer to take the championship some time in the late 1950s. Jim was a mentor, teacher, and friend to hundreds, if not thousands of chess players in the Fort Worth, Texas area."  
Edward Morris

*(editor: According the Jim Voelker's records from the old Saint Louis Chess website, Mr. James Wright was the Missouri State Champion in 1960)*

USCF Executive Director Bill Hall has announced that a contract has been signed to bring the US Open to St. Louis in 2014. The US OPEN is one of the great traditions in US chess, and hasn't been held in the Show-me State in decades. The event is a nine round open tournament (all one section), that can be played one round a day, or several quicker schedules are offered. Side events are plentiful each day as well. The event will be in Washington (near Portland Oregon) in 2012, Madison in 2013, and then arrive in St. Louis in 2014, before moving to Phoenix in 2015. The Millennium Hotel, (just across from the arch) will be the venue. Some of you may remember this location from the National Youth Action tournament held in 2007.

The Missouri Chess Association has begun an experimental incentive program to assist organizers in the year 2012. Due to the disparity of chess activity outside of St. Louis, the MCA will be offering an increased reimbursement in its usual incentives for tournaments organized in regions 2 and 3. That includes Kansas City as well as the central areas of the state. Instead of the usual \$1 per player, an MCA approved event can receive \$3 per player back from the organization if the event requires MCA membership and meets some basic requirements. The organization also has formed a committee to oversee this incentive, and is that committee is prepared to further help organizers who are seeking to get events up and running across the state. The Missouri Chess Association will happily continue to promote and assist tournaments in St. Louis, but with the current chess landscape, its clear other parts of the state are underserved. We hope to in some way help ensure all Missouri players can have a vibrant local chess community to participate in. If you are considering organizing local tournaments, contact your MCA representatives to get the full details on how we can assist your efforts. (board member information on page 30)



The Missouri Chess Bulletin is the official publication of the Missouri Chess Association, a not-for-profit organization which promotes and supports chess in Missouri. The Missouri Chess Bulletin was founded in 1973 and is published quarterly. Your letters and writings are welcome. All submissions become the property of the MCA and the MCA reserves the right to edit any and all material received. Published opinions are those of contributors and do not necessarily reflect the views of the MCA

# Missouri Amateur Championship

~ Bob Howe ~

In the Amateur Championship, there was a larger than average disparity in ratings during **Round one**, with many games seeing 800 point differences between players. This led to a quick round with little in the way of upsets. (Owen Bitting (1008) did manage a draw against Dennis Taylor (1602), the only game to prevent a full sweep by the higher rated players)

**Round two** turned out to be much more competitive, as top boards such as David Meliti, Jeffery Kovalic, Steven Bange, David Askin, and Selden Trimble all faced stiff competition from their round 2 opponents. Nathan Phan held Bange to a draw, Peter Harris did the same to Kovalic, while Matt Larson managed a 1-0 against Askins. Trimble and Meliti managed to come through unscathed, although they both were a bit worse for wear at the end of the tough struggles.

In **Round three**, the two top seeds managed to advance to 3/3. Selden Trimble and David Meliti would square off on Sunday morning to see who would have the advantage going into round 5. Peter Harris continued to have a fine event, as his 2.5/3 held third. He was set to face the other 2.5/3 player, Steven Bange. The winner of that game would likely face the winner of first board for a chance at the title.

The top board in the amateur section was the final game to finish in **Round four**. The two top seeds battled tooth and nail, knowing this could easily decide the tournament winner. The ending saw David Meliti holding three connected pawns and a rook versus Trimble's three separated pawns and bishop. Sounds like good news for Meliti, but Trimble pulled out every trick, and eventually forced Meliti to sacrifice his rook for two pawns, leaving a dead draw. Meanwhile Steven Bange won the board two matchup to catch the leaders, creating a three way tie at the top going into the final round. Another notable win that round was a nice upset by Fred Smith (*pictured right*) (985) over Nathan Phan (1648)



The final winner would be decided late, as the 2nd to last game to finish was top board, David Meliti versus Steven Bange. The other leader, Selden Trimble, received a lucky break (on paper at least) and was paired down against a 1500, Karan Mehta from Kansas. As it turned out, it wasn't all good, as Mehta's unofficial rating was 100 points higher than his supplement, a clear sign the young man is playing excellent chess, and he showed it putting Trimble on the ropes in the middlegame. He had the game set up to be his, but Trimble did all he could to make it challenging, and when a mistake was made, the wily veteran jumped all over his opportunity. The comeback win for Trimble guaranteed him at least a tie for first. Things looked good for Trimble to win it all, as the Meliti/Bange game had even material into the ending and looked headed to a likely draw. Meliti, however, saw something I missed in my observation, and Bange must have missed as well, because he materialized an attack out of seemingly nowhere, and was able to grab the full point. This put Meliti and Trimble in a tie at the top with 4.5/5 each, and the two are recognized at the 2011 Missouri Amateur Co-Champions. (Meliti got to carry home the trophy due to tiebreaks) Congratulations to both!



David Meliti of Kansas City enjoys a big tournament win.

Other winners included Steven Bange, Jeffery Kovalic, Peter Harris, Scott Andersen, Clark Berry Nathan Sobery, Fred Smith, and Bruce Levine. All of whom took home some cash for topping their class sections. Congrats to all the winners, and a big thanks to everyone who came out to play!

# Missouri Invitational Championship

## Early Rounds:

After two rounds little has been decided at the Missouri Invitational Championship. The Invitational section had only a few players remain undefeated. NM Richard Benjamin was the first player to reach two out of two points, after he unseated Barry Manthe of Columbia. Joining him with a perfect score was the father and son duo of Ben and Spencer Finegold. The young Finegold-Ron Luther game saw all the queenside cleared of pawns save one, and the pieces took center stage as something like 47 pieces tangled up between the two sides on the open queenside. The tactics, pins, forks and checks were too lengthy to describe, but when the dust settled Spencer had a Horse and Queen facing Luther's Queen, with a single passed pawn as compensation. The classic Queen/knight combo showed its strength again and Spencer emerged with a fine upset. Meanwhile Abhishek Mallela gave himself chances to draw Grandmaster Finegold when he entered an ending down a pawn but with opposite colored bishops. The GM showed his stuff though, steadily improving bit by bit until the joined the 2/2 club.



The Finegold Duo went into round 3 with perfect scores.

### Grunfeld Defense

Missouri Invitational Championship  
W: Abhishek Mallela (2099)  
B: GM Ben Finegold (2568)

Annotation by GM Finegold. **1.d4 Nf6**

**2.c4 g6 3.Nc3 d5 4.cxd5 Nxd5 5.e4 Nxc3 6.bxc3 Bg7 7.Bg5 c5 8.Rc1 0-0 9.Qd2 cxd4 10.cxd4 Qxd4 11.Qxd4 Bxd4 12.Bxe7 Re8 13.Ne2 Nc6 14.Nxd4 Nxd4**

**15.Rc4 Nc6** Round 2 was by far the toughest for me, black against Mallela, as I squandered a nice opening edge (I played the Gruenfeld as black!) with the terrible tandem of moves, 14..Nxd4? and 15..Nc6? I have not played the Gruenfeld in more than 20 years in a rated game, but Ray Robson looked at it in India, and Ray won by playing it for the first time, so I thought it was time to give it a whirl **16.Bf6 Be6 17.Rc2 Nb4 18.Rb2 Nxa2 19.Bb5 Rec8 20.Kd2 a5 21.Ra1 Nb4 22.Be7 Nc6 23.Bxc6 bxc6 24.Kc3** White should have played 24.Ra4 when he has little to fear, but as it went I was able to advance my passed queenside pawns and cause my opponent all kinds of headaches. **a4 25.Rb6 Bb3 26.Bd6 c5 27.Rb5 c4 28.h4 Rd8 29.e5 Ra6 30.Rd5 a3 31.Rd4 a2 32.Kb2 f6 33.f4 Kf7 34.Kc3 h5 35.Re4 Ke6 36.Rd4 Rd7 37.Bc5 Rxd4 38.Bxd4 fxe5 39.Bxe5 Kf5 40.g3 Ra8 41.Kb2 Rd8 42.Rc1 Rd3 43.Rg1 Kg4 44.Ka3 Rd2 45.Rc1 Rg2 46.Ra1 Kf5 47.Re1 Rxc3 48.Bb2 c3 49.Ba1 c2 50.Be5 Rd3 51.Ra1 Rd1 52.Kxb3 Rxa1 53.Kxc2 Rb1 0-1** The game was the last to finish of the round, as Spencer was able to beat Ron Luther in another long game, right next to mine!

Young Margaret Hua had the start of a fine performance cut short. She managed to draw the always dangerous Mark Ferber in round one. Margaret pulled off a KC "swindle", setting up a perpetual check on Ferber when her own King sat in grave danger.

### Colle System

Missouri Invitational Championship  
W: Mark Ferber (2151)  
B: Margaret Hua (1993)

**1.Nf3 d5 2.d4 Nf6 3.e3 e6 4.Bd3 Be7 5.Nbd2 0-0 6.b3 b6 7.Bb2 Bb7 8.Ne5 c5 9. 0-0 Nc6 10.f4 Nxe5 11.dxe5 Ne4 12.Bxe4 dxe4 13.Qe2 f5 14.exf6 Bxf6 15.Bxf6 Qxf6 16.Rad1 Qc3 17.Nb1 Qb2 18.Rd7 Bd5 19.Rd1 Rfd8 20.Rxd8+ Rxd8 21.Qd2 Rd7 22.Qc3 Qxa2 23.Nd2 Qa6 24.Nc4 Qc8 25.Ne5 Rc7 26.Qd2 h6 27.c4 Bc6 28.Qd8+ Be8 29.Qh4 Qb7 30.Rd8 Rc8 31.Rd6 Qa6 32.h3 Qa1+ 33.Kh2 Qc3**

**34.Qe7 Qxe3 35.Qxe6+ Kh7 36.Qf5+ Kh8 37.Qxc8 Qxf4+ 38.Kg1 Qe3+ 39.Kf1 Qf4+ 40.Ke2 Qxe5 41.Re6 Qb2+ 42.Kf1 Qc1+ 43.Kf2 Qd2+ 44.Kg3 Qe3+ 45.Kh2 Qf4+ ½-½** She followed up that game with a victory over LM Bob Holliman in round two. Margaret used the tried and true "pick up one pawn, then pick up another" strategy to come out ahead in that game. Margaret decided to call well enough alone and withdrew after those two rounds, as it would assure she would cross the 2000 barrier. We were sorry to see her go, but congratulate her on making expert.

In round three, first Board was all about the Benjamins. No, the money wasn't decided, it was a face-off between GM Benjamin Finegold, and NM Richard Benjamin. The game turned crazy fast, as right out of the opening pieces were hanging, Kings were running and something went terribly wrong. Grandmaster Fine-

gold emerged from the insanity with the only 3-0 score to lead heading into Sunday. On board two, Spencer Finegold lost his perfect score, but retained 2nd place after a draw with Mark Ferber. This left the Finegold pair dominating the tournament. Ron Luther returned to winning form on board three, and William Nesham picked up his second upset win to join Luther and R. Benjamin with 2/3.

#### Grunfeld Defense

Missouri Invitational Championship

W: William Nesham (1835)

B: Frank Smith (2052)

1.e4 g6 2.d4 Bg7 3.Bc4 e6 4.Nf3 Ne7 5.0-0 0-0 6.Nc3 a6 7.Bg5 b5 8.Bb3 Bb7 9.d5 h6 10.dxe6 hxe5 11.exf7+ Kh8 12.Nxg5 Nf5 13.Qg4 Nh6 14.Qh4 a5 15.Ne2 a4 16.Nf4 Ra6 17.Bd5 Bxd5 18.exd5 Qf6 19.Rfe1 Rd6 20.Re8 Na6 21.Rae1 Nb4 22.Rxf8+ Bxf8 23.Qxh6+ Bxh6 24.Re8+ Bf8 25.Rxf8+ Kg7 26.Rg8+ Kh6 27.Rxg6+ Qxg6 28.Nxg6 Kxg6 29.f8Q Kxg5 30.Qd8+ Kf5 31.Qxc7 Rxd5 32.g3 Nxa2 33.c4 Rd4 34.Qc5+ Ke4 35.f3+ Ke3 36.Qa3+ Rd3 37.Qxa2 Kxf3 38.Qb1 bxc4 39.Qf1+ Ke3 40.Qf4+ Ke2 41.Qxc4 d5 42.Qxa4 d4 43.Qa6 Ke3 44.Qe6+ Kf3 45.Qf5+ Ke2 46.Qf2+ Kd1 47.b4 Re3 48.b5 Re1+ 49.Kg2 d3 50.b6 d2 51.b7 Re8 52.Qf3+ Re2+ 53.Kf1 Kc1 54.Qc3+ Kd1 55.Qa1+ Kc2 56.Kxe2 d1N 57.Qxd1+ Kc3 58.Qd3+1-0

Sunday morning saw the pairings do what no other player could do, slow down GM Finegold. With a forced pairing with his son, Ben Finegold apparently preferred risking his luck in round five over committing chess filicide, and offered a draw early in the game. Spencer, rated 600 points lower, mysteriously accepted the half point offered by the GM. Meanwhile, William Nesham's magic run was stopped by Richard Benjamin. In one of the last finishing games, Mark Ferber beat out Ron Luther. The Ferber game was an interesting contest, with both players holding passers on the 7th, but in the end Luther's promotion cost Ferber his last minor, but Ferber's would require the loss of Luther's Queen, deciding the game in his favor. Nick Karlow and Frank Smith also picked up wins to help their standings, in a round filled with decisive games.

#### Final Recap

GM Finegold held a half point lead going into the last round, giving him a nice advantage, but needing the full point to be guaranteed his second straight Missouri Invitational Championship. The game went his way, getting an advantage early against Mark Ferber. Ferber fought on, but the grandmaster steadily improved his own pieces while controlling his opponent's options. Eventually Ferber's active King became ensnared in a mating net, and he raised the white flag.

#### Queen's Gambit Declined

Missouri Invitational Championship

W: GM Ben Finegold (2568)

B: Mark Ferber (2151)

Annotation by GM Finegold. The last round was a Finegoldesque squeeze as my opponent, Mark Ferber, chose a dubious variation that I used to play. **1.d4 d5 2.c4 Bf5** 1.d4 d5 2.c4 Bf5 is something I oft played from 1987-1997, but, it seems like white has more than one way to get an edge. I quickly got a simple position was two bishops and a better king. Maybe Leko would draw easily with black, but Ferber played a bit too passively, and I was able to infiltrate decisively with my rook. **3. cxd5 Bxb1 4.Qa4+ c6 5.dxc6 Nxc6 6.Rxb1 Qxd4 7.Qxd4 Nxd4 8.e3 Nc6 9.Bb5 Rc8 10.Bd2 a6 11.Ba4 e6 12.Rc1 b5 13.Bb3 Nf6 14.f3 Be7 15.Ke2 0-0 16.Nh3 Na7 17.Nf4 Rc6 18.Rxc6 Nxc6 19.Rc1 Nb8 20.Nd3 Nfd7 21.a3 Re8 22.e4 Bd6 23.f4 e5 24.f5 Kf8 25.Bb4 Bxb4 26.Nxb4 Ke7 27.Rc7 Kd6 28.Ra7 f6 29.Bd5 Rc8 30.Kd2 Rc7 31.Ra8 Kc5 32.Nxa6+ Nxa6 33.Rxa6 Kd4 34.b4 Nf8 35.Rd6 Rd7 36.Rc6 1-0** The resident GM once again holds off the local challenges and notches State Championship number two! Congratulations, Congratulations!

Board two was a face off between Spencer Finegold and Richard Benjamin. (Its the Benjamin Finegold game jested Benjamin Finegold) A draw would secure both some prize money, but the guys battled hard for a win, trying to secure clear 2nd. The game would be the last to finish, as a tricky ending resulted. Benjamin had an extra pawn, but the opposite color bishops left his two passers blockaded, while Finegold tried to make something of his Kingside majority. Eventually the two ran out tricks, and a truce was agreed. Nick Karlow defeated Barry Manthe in a tactical sac-fest to deny Manthe a share of the prize, so Benjamin and S. Finegold shared 2nd/3rd. Frank Smith also picked up a full point, giving him 2 wins on Sunday to finish strong after a rough start on the first day.

#### Queen's Pawn Opening

Missouri Invitational Championship

W: Frank Smith (2052)

B: Abishek Mallela (2170)

Annotation by Frank Smith. *Abhishek had a bad tournament and was coming out swinging, and I was not about to avoid complications. Thus a slugfest ensued.* **1.d4 d5 2.Nf3 Nf6 3.g3 e6 4.Bg2 Be7 5.0-0 0-0 6.c3 b6 7.Bg5 Ne4 8.Bxe7 Qxe7 9.Nbd2 Nd6 10.Re1 Bb7 11.Ne5 f6 12.Nd3 f5 13.f3 Ba6 14.Ne5 f4** {This

move is odd, but good} **15.gxf4 Nf5** {Rxf4 was better, but Abhishek was being very aggressive} **16.e4 Nh4 17.exd5 Rxf4 18.dxe6 Qg5 19.Ng4** {I had to trust my calculations to go into this, and I was correct. White is better.} **Nc6 20.Ne4 Qg6 21.Ng3 Bb7 22.d5 Ne7 23.Re5?** {I planned on playing Ne5 here and it was certainly better than the move played} **Rd8 24.Qd2 Rxf3?** {Nxf3 gives white problems. Now I played well the rest of the way. Precise calculation was required} **25.Rg5 Rxd5 26.Rxd5 Nxd5?** {Bxd5 should draw} **27.Ne5 Rxg3 28.hxg3 Qxg3 29.e7!!** {The point} **Nf3+** {Black had no good moves. Nxe7 loses to Qd8. Qxe5 loses to Bxd5!, winning the house or distracting the queen from the E pawn} **30.Nxf3 Nxe7 31.Re1 Nd5 32.Qe2 h6 33.Qe8+ Kh7 34.Qe4+ Kg8 35.Qh4 Qd6 36.Re8+ Kf7 37.Rd8 Qe6 38.Nd4 Qe5 39.Qf2+ Ke7 40.Qf8# 1-0**

1   BENJAMIN P FINEGOLD 2562	4.5	W	5 W	14 W	2 D	3 W	4
2   RICHARD BENJAMIN 2200	3.5	W	6 W	8 L	1 W	9 D	3
3   SPENCER FINEGOLD 2089	3.5	W	9 W	7 D	4 D	1 D	2
4   MARK JOEFFREY FERBER 2151	3.0	D	11 W	5 D	3 W	7 L	1
5   NICK W KARLOW 2076	2.5	L	1 L	4 D	6 W	14 W	8
6   FRANK H SMITH 2052	2.5	L	2 L	9 D	5 W	10 W	14
7   RONALD G LUTHER 2200	2.0	W	10 L	3 W	8 L	4 U	0
8   BARRY PAUL MANTHE 2045	2.0	W	13 L	2 L	7 W	12 L	5
9   WILLIAM NESHAM 1835	2.0	L	3 W	6 W	14 L	2 U	0
10   JOSEPH A GARNIER 2036	1.5	L	7 D	12 U	0 L	6 B	0
11   MARGARET M HUA 1983	1.5	D	4 W	13 U	0 U	0 U	0
12   ALEXANDER VERGILESOV 1949	1.5	L	14 D	10 W	13 L	8 U	0
13   BOB HOLLIMAN 2200	1.0	L	8 L	11 L	12 B	0 U	0
14   ABHISHEK MALLELA 2170	1.0	W	12 L	1 L	9 L	5 L	6

## ◆————◆

### Congratulations to these recent Tournament Winners:

Missouri Invitational State Championship: GM Benjamin Finegold

Missouri Amateur State Championship: David Meliti & Selden Trimble

Dog Days Open: Nick Karlow

Spassky Open: Alex Esposito

St. Louis District Championship: GM Benjamin Finegold

2 on 2 Team Championship: Nick Karlow & Zach Kasiruak

Westport Random Opening: Steven Rand & Tim Steiner

Missouri Open State Championship: IM Goran Vojinovic

Missouri Quick State Championship: IM Goran Vojinovic

Missouri Blitz State Championship: IM Goran Vojinovic



# Waldo Odak Memorial

January 13th through January 15th will mark the Waldo Odak Memorial Tournament, held in St. Louis by the Chess Club and Scholastic Center. The event will be a three day festival, with not only a traditional over the board tournament, but with a Grandmaster Simul and blitz tournament. The event is to honor the memory of St. Louis Expert Waldo Odak. Waldo passed away in August of 2011, from ALS, the disease commonly known as Lou Gehrig's Disease.

Below are submissions from people who wished to contribute something about their experience with Waldo.

## **By Former St. Louisian David Cole**

When I learned of his diagnosis of ALS back in the Spring of 2009, I spoke with Waldo and he was very upbeat and still personable with me over the phone. When I attempted to wish him a Happy 50th birthday earlier this year on February 14th, it was a very sad conversation as he was slurring his speech, and I could not understand what he was saying, but I can tell he was grateful for our friendship and to share the love of the game with me and the rest of the St. Louis chess playing community.

RIP my friend, you will always be remembered and revered throughout the chess playing community.

David A. Cole, Franklin, NJ USCF Life Member and Former St. Louis Area Resident

## **By Al Howlett:**

Reflecting quite a bit this past week on the time that I was privileged to spend with Waldo during what would be the last year of his life, I valued much that he had to say about what was important to him. I also thought about how friendships are sometimes built in the most unexpected ways. You see, when Waldo and I first met at the Crestwood Chess club in the early 90's, it wasn't the best of encounters. Neither of us knowing each other, I approached him and asked him to play some blitz. He said that he'd play me for \$1 a game. Well, not knowing he was an expert, and not ever having been asked to pay to play someone, I took offense and walked away. I treated him with contempt for quite some time after that. We played some weeks later in an unrated blitz event there. With a chip on my shoulder, I won the game rather quickly and went to score 11/12 and tie for 1st. After that night although he played me for free, to my shame it would be a while before the contempt was dissolved.

Now, fast forward a couple/few years to Jan 1997. There was a team event that was paying \$400 to the winner (that amount was more impressive/useful back then). Ken Waller, Waldo Odak, Behrooz Vakil and myself formed a team playing boards 1-4 respectively. We were the top seed and each scored 3.5/4 (14/16 as a team), winning the event. Behrooz came up with team name "Where's Waldo" (those wanting to know what that means are encouraged to use Google to find it's origin). Well, we were definitely buddies after that day (it's funny how winning and celebrating together can often do that very thing), and we had no conflict from that day forward. We often hung out at subsequent events, went to lunch together, analyzed games and all that fun stuff. We would play once more but in a regular event, where he would beat me to win money.

When Jim Voelker informed me about a year and a half ago that Waldo had been diagnosed with ALS, it was sobering and humbling. Before then, my most recent memory of Waldo was seeing him a couple of times at the CCSCSL, one of which I congratulated him for his losing 80 pounds. He shared a few strategies with me and Ironically, I would go on to loose 80 pounds myself. The very last memories I have of Waldo, is calling him a few times during spring last year and stopping by to see him the week he turned 50 years old this past spring. He was in good spirits and asked me to go to White Castles for him. He told me how much he looked forward to, and appreciated playing Selden Trimble online, which he did most days of the week for months I believe. I was especially excited when Selden went over 2000 again last year, thinking about his daily sparring with Waldo.

So that brings us to the last lesson from Waldo. When I stopped by Waldo's, we would often have lunch together. He generally preferred Taco Bell, while I preferred Subway. Sometimes he would ask me to bring over my tournament games, so that he could analyze them and give me some advice. On one of the vis-

its, he asked me to play an untimed game with him and he just asked that I move the pieces for him. Out of respect for him, I tried my best, rather than just moving pieces around. I'm sure he would have known the difference and would have asked me not to do that. One of his nurses showed up before we finished, so we adjourned the game for a week, after which he destroyed me in a rooks vs. queen endgame. I have no doubt that he was playing expert strength through his last days.

#### Queen's Pawn Opening

2011

W: Waldo Odak (2047)

B: Al Howlett (1912)

Annotations by Al Howlett **1.d4 Nf6 2.c4 e6 3.Nc3 c5 4.Nf3 a6 5.g3 cd 6.Nd4 Nc6 7.Bg2 Be7 8.0-0 0-0 9.b3 d5** A bit ambitious, and leading to a series of exchanges that hampers black with an isolated pawn on an otherwise open d file, making it an easy target of attack. **10.cxd Nd5 11.Nd5 ed 12.Bb2 Nd4?! 13.Qd4 Bf6 14.Qd2 Bb2 15.Qb2 Re8 16.e3 Bf5 17.Rfd1**

**Be4 18.Be4 Re4 19.Rd2 Qa5 20.Rad1 Rd8 21.Qc2 g6?!** I noticed, considered, and underestimated that white could get 2 rooks for the queen. I remember thinking that I often get away with this in quick chess because it's both simpler and faster to move one queen than 2 rooks. It's one of the bad habits (laziness) that playing a lot of speed chess can lure one into. With no clock being used, Waldo patiently coordinated his rooks into a decisive advantage. More accurate was retreating the rook to e5 (or e8 is ok) although white would still have a slight edge. **22.Qe4 dxe 23.Rd8+ Kg7 24.R8d2** At this point one of Waldo's nurses came over, so we decided to adjourn the game. Thinking about this, while I didn't want to be tempted run the position through Rybka (which is one reason that I don't play correspondence chess by the way), so I looked at the position off and on while conversing with she and Waldo. Before I left, I told Waldo that I'd like to play Qa3, but he insisted that I wait until the next week to move, and said that he didn't think Qa3 was a good move. Well.... he sold me, so when I went back a week later, I played the less accurate Qc3. After the game, I ran the position through Rybka for about an hour and the better move was in fact Qa3. **24...Qc3 25.h4 h5 26.Kg2 Qf6 27.Rc1 Qf3+ 28.Kg1 g5! (best) 29.Rc5 (best) gxh (best) 30.Rg5+(best) Kh6? 30....Kf6** is best (.94 for white), instead of (2.54 for white), but I no longer see a way in or a way to hold and start to fall apart. **31.gxh Qf6 32.Rd4 Qh8 33.Rd6+ f6 34.Rf5 Qg7+ 35.Kf1 Qg4 36.Rff6+ 37.Kg7 38.Rg6+ Kg6 39.Kg2** (black resigned). Black has no defense for 40.f3. **1-0** He was definitely playing very well until the end, and his being gone has helped me refocus on what's more important in life. That playing chess should be enjoyable rather than stressful. Rating goals and prize money come and go (and aren't ever engraved on our tombstones I'm told), but our good times, friendships and memories can last for a lifetime. I'm now looking forward to the CCSCSL holding the Waldo Odak Memorial event next year.

#### By Jim Voelker:

In recent years, Waldo beat a number of masters, including Ron Luther (in 2 MO Opens), Bob Jacobs, and myself. He also drew Masters and Titled players like Loal Davis, Alex Betanelli, and Doug Eckert.

Bless USCF's new statistical pages! (a link to his results against Masters is given below)

(<http://main.uschess.org/datapage/gamestats.php?memid=12471832&ptype=G&rs=R&dkey=2200&drill=G>)

#### Queen's Pawn Opening

Crestwood 1996

W: Waldo Odak (2036)

B: James Voelker (2226)

The following are a few games between Waldo and myself.

**1.d4 Nf6 2.Nf3 d5 3.g3 c6 4.Bg2 Bf5 5.0-0 h6 6.Nbd2 e6 7.b3 Be7** [7...Nbd7 8.Bb2 a5 9.a4 Bb4 10.Ne5 0-0 11.Nxd7 Qxd7 12.c3 Bd6 13.Re1 b5 14.e4 dxe4 15.Nxe4 Nxe4 16.Bxe4 Bxe4 17.Rxe4 Rfd8 18.Qc2 Be7 19.Ree1 Qb7 20.axb5 cxb5 21.c4 Bf6 22.Red1 Roesch,A (2350)-Van Wely,L (2655)/Germany 1998/ GER-chT/0-1] **8.Bb2 0-0 9.c4** [9.Ne5 Nbd7 10.Re1 (10.Ndf3 Nxe5 11.Nxe5 Qc7 12.Nd3 Nd7 13.Rc1 Rac8 14.c4 Qb8 15.c5 b6 16.cxb6 axb6 17.Qd2 c5 18.dxc5 bxc5 19.Nf4 Nf6 20.Qc3 c4 21.Qe5 Bd6 22.Qe3 Ng4 23.Qf3 Be5 24.Bxe5 Nxe5 Corti,C-Cardani,R /Robecchetto 2006/ 1/ 2-1/2; 10.Nxd7 Qxd7 11.c4 b5 12.c5 a5 13.e3 Bd3 14.Re1 Qc7 15.f4 a4 16.b4 a3 17.Bc3 Ne4 18.Nxe4 dxe4 19.Bf1 Bxf1 20.Rxf1 Qd7 21.Rf2 Qd5 22.Rg2 Kh7 23.Qb3 Qxb3 24.axb3 Ra7 Preuss,H (2201)-Schulze,U (2358)/Germany 2000/ 1/2-1/2)) **10...Nxe5 11.dxe5 Nd7 12.e4 Bh7 13.Qe2 Qa5 14.a3 dxe4 15.b4 Qc7 16.Bxe4 Bxe4 17.Qxe4 a5 18.Nb3 axb4 19.axb4 Nb6 20.Nc5 Nd5 21.Nd3 b5 22.Rec1 Qb7 23.c4 bxc4 Roesch,A (2350)-Van der Sterren,P (2555)/Germany 1997/GER-chT/0-1] **9...Re8 10.Ne5 Nbd7 11.Nxd7****

**Qxd7 12.Nf3 Bd6 13.Ne5 Qe7 14.f3** [14.Rc1 Nd7=] **14...Rad8** [14...Red8 15.Qe1=] **15.Nd3** White plans c5 [%cal Yc4c5] [15.c5 Bxe5 16.dxe5 Nd7=] **15...Bh7** [15...Ba3 16.Bxa3 Qxa3 17.Ne5=] 16.c5= Bc7 17.b4 Nd7 18.e4 dxe4 19.fxe4 f5 [19...a5 20.a3=] **20.Qb3** [20.e5!?!±] **20...fxe4=** **21.Nf4** [21.Nf2!?!=] **21...Kh8** [21...Nf6 22.Rae1] **22.Bh3** The pressure on the isolated pawn grows [Rb3 e6, Rf4 e6, Rh3 e6, Ge7 e6] **22...Bf5??** [!22...Bxf4 23.Rxf4 Nf6³] **23.Bxf5± Bxf4** **24.Bg6** [24.Bxe4 Bd2±] **24...Bb8?** [24...Bd2 25.Bxe8 Rxe8 26.Bc1 Bxc1 27.Raxc1²] **25.Bxe8** [25.Qe3 Rf8 26.d5 e5+-] **25...Rxe8?** [!25...Qxe8!?! 26.Rae1 Nf6²] **26.Qe3+- Nf6** [26...e5 27.Qxe4 Nf6 28.Qf5+-] **27.d5! Nxd5** [27...cxd5 28.Rxf6 Combination; 27...exd5 28.Rxf6 Combination; 27...Nxd5 28.Qxe4 Deflection] **28.Qxe4** [!28.Qxh6+ Kg8 29.Qg6+-] **28...Qg5??** [!28...e5!?!±] **29.Rf3** [29.Rf7 Rg8 30.Rxb7 e5+-] **29...e5** [29...Nf6 30.Bxf6 gxf6 31.Rd1+-] **30.Raf1 Qd2??** [!30...Rg8 31.Bc1 Qh5+-] **31.Rf8+** [31.Rf8+ Rxf8 32.Rxf8#] **1-0**

**OGD—Tartakower Defense**

St. Louis Open 2002

W: Waldo Odak (2033)

B: James Voelker (2188)

**1.d4 Nf6 2.Nf3 d5 3.c4 e6 4.Nc3 Be7 5.Bg5 h6 6.Bh4 0-0 7.e3 b6 8.cxd5 Nxd5 9.Bxe7 Qxe7 10.Nxd5 exd5 11.Bd3 Be6 12.0-0 c5 13.Rc1 Rc8** Black prepares c4 [%cal Yc5c4] [13...Nd7 14.Bb1 Rfc8 15.Qd3 Nf8 16.Qa3 Rc7 17.dxc5 bxc5 18.b4 c4 19.Qa5 Rb7 20.a3 Qd6 21.Nd4 Qb6 22.Qxb6 axb6 23.Rc3 Bd7 24.e4 Ne6 25.Rd1 Nxd4 26.Rxd4 Rba7 27.Rxd5 Be6 28.Rd1 Aguetzaz,M (2329)-Olivier, J (2363)/Grenoble 2007 0-1 (58)] **14.Bb1** [14.e4 Nd7 1/2-1/2 Greenfeld,A (2520)-Boensch,U (2530)/Polanica Zdroj 1987 (14...c4 15.exd5 Bxd5 16.Re1 Qd8 17.Bf5 Rc7 18.Ne5 Nc6 19.Nxc4 Ne7 20.Ne3 Rxc1 21.Qxc1 Bxg2 22.Kxg2 Nxf5 23.Nxf5 Qd5+ 24.f3 Qxf5 25.Qc6 Qg5+ 26.Kf1 Rd8 27.Re8+ Rxe8 28.Qxe8+ Kh7 29.Qxf7 Almeida,O (2348)-Franco Ocampos,Z (2511)/ Varadero 2000 1/2-1/2 ) ] **14...c4 15.Qc2 g6 16.Ne5 Bf5 17.Qd2 Bxb1 18.Rxb1 Nc6 19.f4 Nxe5** [19...b5 20.Qc2=] **20.fxe5² Rc6 21.Rf3** [21.Rbe1 h5²] **21...Kg7** [21...f6 22.Qc3=] **22.Rbf1 Rf8 23.Rf6 Re6 24.Qf2 b5** [24...Qd7 25.Qc2²] **25.h4 b4** [25...Kg8 26.Qf4 h5 27.Qh6±] **26.h5!± g5** [26...gxh5 27.Qf3 Double attack (27.Qf3 Decoy) ] **27.Qf5 Kg8** [27...Qe8 28.e4 dxe4 29.Qxe4 Rxf6 30.Rxf6± (30.exf6+?! Kg8 31.Qxe8 Rxe8=) ] **28.e4** [28.Qc2!?! Rxf6 29.Rxf6±] **28...Rxf6= 29.Qxf6 Qxf6** [!29...Qe6!?! 30.Rc1 dxe4=] **30.Rxf6± Rc8** Black intends c3 [%cal Yc4c3] [30...dxe4 31.Rc6±] **31.exd5 c3 32.bxc3 bxc3 33.Rf1 Rc4 34.e6 fxe6 35.dxe6 c2 36.e7 Rc8 37.d5 c1Q 38.e8Q+! Rxe8 39.Rxc1 Rd8 40.Rd1** [40.Rc5 Kg7±] **40...Kf7 41.Rf1+ Ke7 42.Rf5** [42.Re1+ Kf7 43.Re6 Rxd5 44.Rxh6±] **42...Rb8?** [42...Rd6!?!²] **43.Re5±± Kd7** [43...Kd6!?! 44.Re6+ Kxd5 45.Rxh6 Ke4±] 44.Re6+- Rb6 45.Rg6 Ke7 [45...Rd6 46.Kf2+-] **46.Kf2 Rb2+?** [!46...Rd6+-] **47.Kf3 Rxa2 48.Rxh6 Rd2** [48...g4+ 49.Kg3 Kf7 50.Re6+-] **49.Rh7+ Kf6 50.Rxa7** [50.Rd7 Rd3+ 51.Ke4 Rg3+-] **50...Rxd5 51.Ra6+ Ke5??** [51...Kg7+-] **52.Kg4 Ke4 53.Re6+ Kd4 54.h6 1-0**

**From Lisa Ebert**

At the visitation service for Waldo, Lisa Ebert, Waldo sister, told the story of Waldo's last chess game. Lisa said that shortly before his death he wanted to play a game on the Internet. He couldn't move himself, but he could tell her the moves. He played a G/15 telling Lisa where to move. She thought some moves were bad and offered suggestions, but he would just tell her to move where he asked. It was a slow process and he got down to 3 minutes. Lisa told him "Wally, you're going to run out of time" but he said to just keep playing. He mated his opponent just before his rime ran out, so Waldo won his last chess game.

{Selden Trimble, who often played Waldo on ICC during his illness, looked online to try and find the game Lisa described. We believe the following is the game she referred too.}

**From Selden Trimble:**

**Queen's Gambit Declined**

ICC G/15 July 28, 2011

W: Waldo Odak

B: "misuc56"

This is the last game of chess that Waldo Odak played on the ICC. It was July 28, 2011. His opponent is known to me only through his handle, "misuc56." The last day Waldo appeared on the ICC site was August 15, 2011. His final regular ICC rating was 2066. The time control of this game was G/15 with an increment of 5 seconds.} **1. d4 d5 2. c4 e6 3. Nc3 f5 4. Nf3 Nf6 5. Bg5 c6 6. e3 Bd6** {6. ... Be7 would have been better. } **7. Ne5 O-O 8. f4 Nbd7 9. Be2 Qe8 10. O-O a6 11. c5 Bc7** { If Black is going to exchange this bishop for the e5-knight, now is the time to do it. It becomes apparent later that the text move is wasted.} **12. b4 h6 13. Bxf6 Nxf6 14. Qb3 Bd7 15. a4 Kh7 16. b5 Bxe5** { Black now has a bad

bishop. Waldo works on this the rest of the game.} **17. fxe5 Ne4 18. Nxe4 fxe4 19. Rxf8 Qxf8 20. Rf1 Qe7 21. bxa6 bxa6 22. a5!** { White fixes the a6-pawn on a light square. This pawn becomes a target for White. It's difficult to see how Black can hold it. } **Be8 23. g3** { 23. Qb6 would be met by 23. ... Qg5.} **h5** { Black's game is bad. He's decides not to sit still and get strangled on the queenside. But this move seems risky.} **24. h4 g5 25. Rf6 gxh4 26. gxh4 Qg7+ 27. Kh2** { 27. Kf2 was also to be considered. Black can't really attack White's h-pawn. } **Bg6!** { A clever move. Black appears to want to activate his queen by Re8 followed by Qh6. But in fact, what he really wants to do is to move his rook to g8 with a powerful threat on the g-file. {[Diagram Right]} **28. Qb6??** {And Waldo does not see it! A fast time control will do this to you. 28. Qb1 Rg8 29. Qf1 Bf5 30. Qf2 seems to hold. White still attacks Black's a-pawn.} **Rf8??** { But Black doesn't see what's going on, either! Instead, 28. ... Rg8!! There would have been nothing reasonable that Waldo could do against the threat of Bf5 followed by Qg2#. } **29. Rxf8** {Maybe 29. Qxc6 would have been better. But White gets rid of a Black piece that could have caused his king much trouble, while White still has his threats against the a-pawn.} **Qxf8 30. Kg2** { 30. Kg3 would have saved a move.} **Qe7 31. Kg3 Be8 32. Qxa6** { At last he gathers the pawn.} **Qg7+ 33. Kf2 Qg6??** {Surely 33. ... Qe7 puts up a lot more resistance. After 34. Ke1 Qxh4+ 35. Kd2, White is going to have to be careful about Black's passed h-pawn.} **34. Qb7+ Kh6 35. Qe7 Qf5+?** {This allows the exchange of queens, but it hardly makes any difference. White's passed a-pawn wins.} **36. Ke1**



**Bg6 37. Qg5+** { Black ought to resign.} **Qxg5 38. hxg5+ Kxg5 39. a6** {39. Bxh5 also works. White's a-pawn marches while Black watches.} **h4 40. a7 h3** { The computer, HIARCS 13.1b SP, complains about this as it allows a mate in 8. Instead, if Black plays 40. ... Kh6, it requires White 15 moves to mate. Big whoop.} **41. Kf2** {[Diagram left] Black resigns. **1-0** It is remarkable that Waldo, as weak as he was from ALS, could produce such interesting chess. I don't know if he played any games at all after this. He died on August 22, 2011. He was not married. He left a mother, two brothers, a sister, and five nephews and nieces. And Waldo also left a lot of us with some fine memories of his chess games.

## January 13th-15th Waldo Odak Memorial

A Three day event to celebrate the life of Waldo Odak and Benefit ALS Research.

Friday January 13th: Blitz Tournament: 5/SS, G/5. \$200 Guaranteed!! Entry--\$15 by 1/12, \$20 at the door.  
Registration.: 6:00-6:45 PM. Rd 1: 7 PM. 1st -\$60, 2nd \$50, 3rd -\$35. U2000--\$30. Top U17\$25.

Saturday-Sunday 14th-15th. Waldo Odak Open Tournament: 5/SS, G/85. Two Sections: Open & U1800. Entry Fee: \$40 by 1/13 for annual members, \$50 donation at door. 100% of the entries will be donated to ALS research. \$2,000 GUARANTEED!! Open: 1st-3rd: \$250-\$175-\$100. Expert: \$200-\$150. Class A: \$150-\$75. U1800 Section: 1st-2nd: \$200-\$100. Class C: \$125-\$75. Class D: \$125-\$75. U1200/UNR: \$125-\$75. Registration: 10:00-10:45 Round Times: Saturday: 11, 2:30, 6. Sunday: 11, 2:30. Two 1/2 point byes available if declared before round 2. MCA Membership required from \$5. OSA.

Friday January 13th-GM Benjamin Finegold Simul: Register by 7:45pm \$15 by 1/12 \$20 at the door

Location: Chess Club & Scholastic Center of Saint Louis, 4657 Maryland Ave., Saint Louis, MO 63108

Advance entries/info:

4657 Maryland Ave., St. Louis, MO 63108. 314-361-CHESS. [www.saintlouischessclub.org](http://www.saintlouischessclub.org)

# Najdorf Sicilian

## Focus on the Critical d5 Square

~ IM Goran Vojinovic ~

One of the most common openings in the past 50 years is the Najdorf variation of the Sicilian Defense. The Najdorf offers many different possibilities, starting from extremely sharp, poison pawn variation (1. e4, c5 2. nf3 d6 3. d4 cxd4 4. Nxd4 Nf6 5. Nc3 a6 6. Bg5 e6 7. f4 Qb6 8. Qd2 Qxb2!) to extremely positional lines (1. e4, c5 2. nf3 d6 3. d4 cxd4 4. Nxd4 Nf6 5. Nc3 a6 6. Be2 e5 7. Nb3 ... ) Somewhere between those two lines is the following position, which I will try to explain.



### Sicilian Najdorf

Palace 2008

W: GM Almasi

B: GM Naiditsch

**1.e4 c5 2.Nf3 d6 3.d4 cxd4 4.Nxd4 Nf6 5.Nc3 a6 6.Be3 e5 7.Nf3** If we look deeply at this pawn structure, (diagram left)

we can agree that black has a backward d6 pawn that can come under attack from white's minor and major pieces on the d file, at some point in the future. He also has a "weak" d5 square, that no black pawn can control. What is the strategic battle in this position? White will try to keep full control over the d5 square, and try to maintain the possibility of placing



Najdorf Pawn Structure

and keeping a piece on d5. Fully controlling the d5 square allows white to affect both sides of the board. In order to assure that control, white wants to trade off black pieces that can control d5. For example, he wants to play with Bg5, in order to trade off the Knight on f6. He also will increase the number of his own pieces that can control d5, with maneuvers like bishop to c4, then b3, and the knight on f3 going to d2-c4-e3. It seems that white has full control of the situation. So why does black choose to create

this pawn structure? The answer is because this is one of the rare Sicilian pawn structures that gives the black side a slight space advantage. So what is black's goal? Black will try to control d5 with pieces as much as he can, along with two possible ideas. One is to not allow white to keep a piece on d5. If white has to recapture on d5 with the e4 pawn, then the pressure down the d file vanishes. (Diagram left) This pawn structure we can judge as playable for both sides, and the result of the game will result in who plays better chess. The second, and better plan for black is to be able to push the d pawn to d5. That move (d6-d5) played at the right moment usually allows a strong initiative for black. **7...Qc7** The main idea of this move is that black prevents the white bishop from coming to c4. (where it can help control d5) Other possibilities in this position are



Najdorf Pawn Structure, when white's e-pawn takes on d5.

7...b5 trying to put the bishop on b7 to help control d5.;

7...h6 to prevent the removal of the Knight on f6.;

7...Be6 like b5, to increase control of d5.;

7...Be7 is a main line. Its a flexible line which doesn't declare black's plan on how he will try to control d5.

### 8.a4 Be7

[8...Be6 Kamsky - Kovacevic, Plovdiv 2010; An interesting game in which black tried to play d5-d6 without proper preparation. 9.a5 Qc6 an extra piece to support the move d5 10.Ng5 Nbd7 11.Ra4! since d5 is unstop-

## Infinia Chess

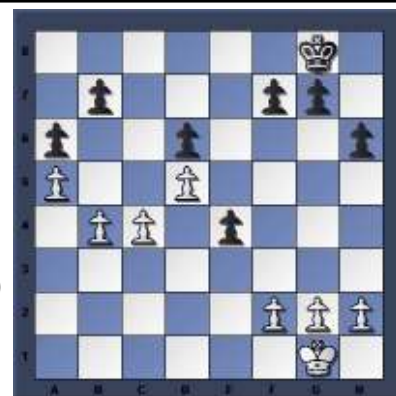
We welcome casual and professional players at all levels.

- Participate in our Lectures
- Design your own board
- Events
- 60-day free trial

**We welcome you to download our client NOW, and help us become the "best little chess site" in the USA.**

60-day free trial - [www.infiniachess.com](http://www.infiniachess.com)

pable, white wants to have his rook active across the 4th rank. 11...d5 12.exd5 Bxd5 13.Nxd5 Nxd5 14.Qf3 N7f6 (14...Qxa4 15.Qxf7+ Kd8 16.Ne6+ Kc8 17.Qe8#) 15.Rc4 Qd7 16.Bd3 Bb4+ 17.Ke2! Nxe3 18.fxe3! full control of the d4 and f4 square. The rook, queen, knight, and bishop fully control all the important light squares. 18...Bxa5 19.Rc5 Bb4 20.Rxe5+ Be7 21.Rf1 Qc7 22.Qf5 Rd8 23.Rf4 Qd7 24.Rd4 Qc7? Qc8 is the only move. 25.Rde4 Rd7 26.Rxe7+ Rxe7 27.Rc4 With the rook coming to c8, white is easily winning.]



**9.a5** The main move, to take space on the queenside. **9...Nbd7 10.Be2 0-0 11.0**

**-0 b5!** In my opinion this is absolutely the best move. [Possible is 11...Nc5, Statistics say black has a good result percentage wise here. However, I very much doubt this can be a good move. It does not fight for the d5 square! Regardless of the database, I do not believe it can be good. 12.Nd2 Be6 13.Bf3 preventing d6-d5 13...Rfd8 (Sixty four years ago, this was played. **Tolush - Bronstein Parma 1947 13...Rac8 14.Qe2 h6 15.Rfd1 Qc6 16.Ra3!** Keeping the knight on c3. **16...Rfe8 17.Rc1 Bf8 18.b4 Ncd7 19.Qd3 Qc7 20.Nd5 Bxd5 21.exd5 Qd8 22.c4 Qe7 23.Qb1 e4 24.Be2** (Diagram of pawn structure, top right) With the better position for white. In this game, the legendary Bronstein managed to win it in the end.)



(Bologan - Safarli, Reggio Emilia 2010) **14.b4 Nb3 15.Nd5 Nxd5** (Perhaps better is: **15...Bxd5 16.cxb3 Be6 17.Bb6 Qc3 18.Bxd8 Rxd8 19.b5 axb5 20.Qe2 d5** and black could have excellent compensation for white material advantage.) **16.exd5 Nxa1 17.dxe6 d5 18.exf7+ Kf8** (18...Kxf7 19.Qxa1 d4 20.Qa2+ Kf8 21.Bh5 g6 22.Bh6+) **19.Qxa1 d4 20.Ne4 dxe3 21.fxe3** With excellent compensation, and great initiative for white.]

**12.axb6 Nxb6 13.Nd2 a5!** does not allow the maneuver Nb3-Na5, and taking space on the queenside. **14.Bxb6** [Possibly better is **14.Nb5 Qb7** again, controlling d5. **15.c4 Bd7 16.Nc3 a4 17.Qc2 Rfc8 18.Qd3 Bc6** with an unclear position. In the main game, the move Bxb6 is clearly an attempt by white to draw.] **14...Qxb6 15.Nc4 Qc5 16.Nd5 Nxd5 17.Qxd5 Qxd5 18.exd5 Ba6**

How does black play for a win?



Black's a3 pawn is decisive.

**19.Rfe1 Bxc4 20.Bxc4** This position is very interesting. It seems to be absolutely equal (it probably is), material is equal and opposite colored bishops are left on the board. But.... black has an excellent pawn set up, that allows him the chance to play for a win. Why? (Diagram right) If the black bishop comes to c5, he will threaten the white kingside, while helping white's a5 and d6 pawns keep back white's b, c and d pawns. So material will be equal, but black's 4 versus 3 pawns on the kingside will have chances to advance. This could create pressure on the king, or create pawn weaknesses that could be exploited. **20...Rfc8 21.b3 Bd8!** on his way to c5 **22.Ra4 f5 23.f3 Kf7! 24.Kf1 Kf6** Black's King is much more centralized than Whites. **25.Ke2 Rc5 26.Kd3 Rac8 27.Re2 Bb6** Black slowly has improved his pieces to their ideal position, and now is ready to play with the kingside pawns.

**28.Ra1 h5 29.Rf1 R5c7!** The bishop's diagonal is open, and the rooks are positioned to be flexible. **30.Ra1 g6!** using one of the main principals of the endgame. **DON'T HURRY! 31.Ra2 Rc5 32.Ra4 g5 33.h3 Rg8 34.Ra1 g4 35.hxg4 hxg4 36.Rh1 Kg5!** The black king penetrates to attack on the weak dark squares, and goes after the pawns on f3 and g2. **37.Kd2 a4** possibly creating a passed pawn. **38.fxc4 Kxc4 39.Rh6 Ba5+ 40.Kd3 e4+ 41.Kd4 a3!** (Diagram Left) As you can see, the white pieces are passive, and without any active coordination. Black's pieces are all active and threatening something. **42.c3 Bb6 43.Rxd6 a2 44.Re1 Rc6+ 45.Ke5 Bf2!** the winning move. Black's passed a pawn is unstoppable because the King on e5 is misplaced. **46.dxc6 Bxe1 47.Rd1 Bxc3+ 48.Ke6 Rg7 49.Kd5** White resigned. **0-1,**

*IM Goran Vojinovic can be found giving lessons and lectures at Infinia Chess. [www.infiniachess.com](http://www.infiniachess.com)*



# U.S. Championships scheduled in Saint Louis

SAINT LOUIS, October 13, 2011 -- GM Gata Kamsky and IM Anna Zatonskih will look to defend their respective crowns next May in Saint Louis.

*The Chess Club and Scholastic Center of Saint Louis (CCSCSL) will host the 2012 U.S. Championship and 2012 U.S. Women's Championship simultaneously May 7 through May 20 of next year. This marks the fourth consecutive year that each of these prestigious events will be held in Saint Louis.*



Tickets for the opening ceremony, which will take place on May 7, and the closing ceremony, scheduled for May 20, will be available soon. Round one for each event begins on May 8.

The 2012 U.S. Championship will feature an elite field of just 12 players and a guaranteed prize fund of at least \$160,000. In addition, the CCSCSL will sponsor the "\$64K Fischer Prize," to be awarded to anyone that scores a perfect 11-0 in the U.S. Championship, in honor of Bobby Fischer's result at the 1963-64 U.S. Championship. Invitations for the 2012 U.S. Championship are as follows:

- (1) 2011 U.S. Champion: GM Gata Kamsky
- (1) 2011 U.S. Open Champion: GM Alex Lenderman
- (1) 2011 U.S. Junior Closed Champion: NM Gregory Young
- (7) The seven remaining highest-rated players according to the January supplement: TBD
- (2) Two wildcard invitations: To be announced

The 2012 U.S. Women's Championship will feature 10 players and a guaranteed prize fund of \$64,000. Invitations for the 2012 U.S. Women's Championship are as follows:

- (1) 2011 U.S. Women's Champion: IM Anna Zatonskih
- (7) The seven remaining highest-rated players according to the January supplement: TBD
- (2) Two wildcard invitations: To be announced

The U.S. Championship and U.S. Women's Championship will both be classic round-robin tournaments, in which each participant will play every other participant exactly once.

In addition to the U.S. Championship and the U.S. Women's Championship, the CCSCSL will organize an open blitz tournament with large prizes to which all of the competitors in both Championships will be invited. Stay tuned for more details!

For more information, visit [www.saintlouischessclub.org](http://www.saintlouischessclub.org).



Reigning Champions GM Gata Kamsky and IM Anna Zatonskih will be in Saint Louis to defend their titles at the US Chess Championship and US Women's Championship.

"U.S. Chess has found its home." Garry Kasparov, referring to reigning "Chess City of the Year" Saint Louis.

## MISSOURIANS ON THE USCF TOP 100 LISTS — October 2011

<b>Overall</b>	GM Hikaru Nakamura (2840) 1st GM Ben Finegold (2561) 34th IM Michael Brooks (2433) 88th	<b>Age 13</b>	Margaret M.Hua (2002) 30th
		<b>Age 11</b>	Nathan Tu Phan (1620) 98th
<b>Age 18</b>	Henry Cao (1873) 82nd	<b>Age 10</b>	Jason Zhou (1738) 31st
<b>Age 16</b>	Isaiah Gadson (2051) 34th James L. Smith (1964) 58th	<b>Age 8</b>	Haozhe Wang (1337) 41st
		<b>Girls U13</b>	Zoe Lemon (1481) 52nd Keturah Gadson (1460) 56th
<b>Age 15</b>	Vikram Arun (1924) 59th William Nesham (1886) 74th	<b>Girls U16</b>	Margaret M.Hua (2002) 8th
<b>Age 14</b>	Jialin Ding (2254) 7th Kevin Cao (2216) 10th William Tong (2002) 30h Ansar Lemon (1991) 35th	<b>Correspondence:</b>	Barry Walker (2247) 45th
		<b>Senior:</b>	Gary White (2015) 83rd

## MISSOURI'S TOP 100 (November, 2011)

1 GM Hikaru Nakamura 2840	36 William Tong 2002	71 Tom Epplin-Zapf 1808
2 IM Goran Vojinovic 2569	37 James Davies 2000	72 Mike Kummer 1804
3 GM Benjamin Finegold 2567	38 Kevin Dale Johnson 2000	73 Daniel Coryea 1800
4 IM Michael Brooks 2433	39 Nathan Swinger 2000	74 Joel Stebbins 1795
5 Charles Lawton 2327	40 Tony Rich 1992	75 Randy Giminez 1793
6 Jialin Ding 2254	41 Ansar Lemon 1991	76 Behrooz Vakil 1793
7 Siddhartha Chib 2254	42 Selden Trimble 1990	77 Senad Smajlagic 1787
8 FM Doug Eckert 2242	43 James Smith 1990	78 Mike Clark 1774
9 Kevin Cao 2233	44 Lucas Mc Cain 1988	79 Matt Barrett 1770
10 Richard Benjamin 2211	45 Steven Rand 1980	80 Marthew Larson 1760
11 Ronald Luther 2200	46 Francis Crow 1958	81 Jason Zhou 1758
12 Bob Holliman 2200	47 Alex Vergilesov 1954	82 Peter Harris 1748
13 Richard Benjamin 2200	48 William Nesham 1931	83 Adrian Barlow 1745
14 Mark Ferber 2161	49 Mark Cogley 1921	84 Aleksey Kazakevich 1737
15 Joshua Frank 2161	50 Vikram Arun 1913	85 Yomi Toba 1735
16 James Voelker 2144	51 Tony Dutiell 1912	86 Bob Howe 1723
17 Abishek Mallela 2131	52 Kenneth Fee 1911	87 Shane Evans 1720
18 Spencer Finegold 2126	53 Steven Bange 1908	88 Spencer Conklin 1705
19 Nathaniel Fast 2115	54 Al Howlett 1907	89 Roger Pagel 1704
20 James McLaughlin 2100	55 Alex Esposito 1883	90 William Collin 1702
21 Ben Gradsky 2097	56 Henry Cao 1873	91 Matthew Hosler 1701
22 Nick Karlow 2085	57 Robert Taras 1866	92 Vishal Bharadwaj 1700
23 Dan Ranario 2078	58 Rodney Vaughn 1847	93 Daniel Todd 1699
24 Frank Smith 2067	59 Raymond Birt 1845	94 Stephen Zhang 1686
25 King Christian 2054	60 Jacob Wilkins 1843	95 Elie Solomon 1678
26 Barry Manthe 2052	61 Timothy Olson 1832	96 Dirk Boswinkel 1669
27 Isiah Gadson 2051	62 Jay Lewis 1832	97 Matthew Alton 1666
28 Timothy Sullivan 2044	63 John Quimby 1830	98 Robert Talbot 1658
29 Bronik Matwijkiw 2031	64 Thomas Rehmeier 1829	99 Guofu Zhou 1658
30 Alex Marler 2024	65 David Askins 1825	100 Thomas Shuler 1655
31 Joseph Garnier 2021	66 Edil Karabiev 1818	
32 Gary White 2015	67 Stephen Landrum 1817	
33 Suman Kalavagunta 2013	68 Tim Nesham 1816	
34 Paul Cornelison 2004	69 Eric Heerschap 1812	
35 Margaret Hua 2002	70 Paul Goddard 1812	

USCF November Supplement  
Includes players active in the  
past 12 months.

# Understanding the USCF's New Title System:

Article by **Walter High**,

Originally posted on the blog; North Carolina Chess, <http://nc-chess.blogspot.com/>

## The USCF Title System

Many chess players are only vaguely aware that the USCF has recently expanded its Title System. Because the Title System was not relevant to most players, few paid any attention to the changes. If you asked a chess player about titles, most would think you were talking about FIDE titles such as Grand Master, International Master, and FIDE Master. They may also know that there are titles of National Master and Life Master, but these tend to get mixed up with rating achievements like exceeding a rating of 2000 and becoming an Expert. Expert is part of the class system based completely on ratings and is not earned in the same way as Titles. Rating classes can also be lost if your rating descends (subject to floors, of course) whereas Titles are permanent. Lets look at the USCF Title System and try to decipher what the USCF has created for us.

What follows is based largely on an article written by our own Michael Tedder for the Henderson/Vance Chess Club's electronic newsletter "In the Arena" (May, 2011 issue). I found his article very informative and thought it should get greater circulation. Mike has given me permission to borrow heavily from his excellent explanation so credit goes to him if you understand this. If you don't, then I have screwed it up trying to add information to his original text!

The Titles you may earn are, in descending order: Life Senior Master, Life Master, Candidate Master, 1st Category, 2nd Category, 3rd Category, and 4th Category. The three Titles that incorporate the word "Master" require a minimum rating achievement of 2400, 2200, and 2000 respectively. The four "Category" titles do not require a minimum rating achievement, but they are associated with the rating levels 1800, 1600, 1400, and 1200 respectively. All Titles are earned by achieving five "norms" in tournament play. It is important to note that a player must achieve the five "norms" in five different tournaments and only certain tournaments qualify for achieving norms. For a tournament to be eligible for norm achievement, it must meet the following criteria: (1) be at least four rounds; (2) not be a quick event; (3) not be match play; and (4) not allow the same players to compete against each other more than twice. These requirements mean that none of the Saturday three-round tournaments can help a player gain a norm. OK, that is the easy part of the Title System to understand.

The actual achievement of a norm is based on a mathematical formula devised by people who understand blackboards full of numbers and strange symbols as well as the better known "equals sign", "greater than," and "lesser than" symbols. I am not one of those people (although I think I have mastered the equals sign!). To put the result in plain English, however, I will quote Mike Tedder: "To earn a norm in this category [he is referring to the 4th Category] the player must have a performance that would be exceptional for a 1200 rated player." Essentially the formula takes a player's result on a crosstable and looks at how a player rated 1200, 1400, 1600, 1800, 2000, 2200, and 2400 would have been expected to perform against this particular player's competition. (The formula uses the opponent's post-event rating.)

Let's look at a 5-round tournament as an example. Suppose Player X wins against an 1840, wins against a 1700, draws a 1900, draws an 1850, and loses to an 1820. The player thus scores 3.0 points. The mathematical formula then calculates the expected result for Player X as if he were a 1200 rated player, then recalculates as if he were a 1400 rated player, then 1600, 1800, etc. The player's actual point total from the tournament (3.0) is then compared to the "expected" result for each Category level. If the player exceeded the expected result by more than one point for any of the Category levels, a norm is then granted in that Category. In this example the expected result for a 1200 player would be zero points, so a score of 3.0 exceeds the expected result by more than one point and a 4th Category norm is granted. Likewise the 3.0 score also exceeds the expected result (0.125 points) for a 1400 and (1.113 points) for a 1600 by more than a full point so norms are also granted for the 2nd and 3rd Categories. The expected result for an 1800 rated

player, however, is 2.488 points and a 3.0 score does not exceed this number by more than one point so a 4th Category norm is not granted. This requirement of exceeding the expected result by more than one point is very unforgiving. If your expected result is 2.0 and you score 3.0, you don't get the norm because you did not exceed the expected result by MORE than one point.

If you followed the above explanation, you can see that a player can earn norms in more than one Category in the same tournament, but you can only earn one norm per Category per tournament. The Title is granted after five norm achievements in the same Category in five different tournaments. Nowhere in the formula is your own rating used. That is why your norm level may not match your rating. As I said above, the first four Category Titles do not require a minimum rating, but the Master level Titles do. If you achieve all five norms for a Candidate Master but are rated below 2000, you will not receive the Title until your rating exceeds 2000. You cannot lose a Title through bad performance or inactivity.

A few more points to wrap this up: (1) you must have an established rating (not be provisional) to gain a Title; (2) a Title does not give you a rating floor, that is a completely different calculation; (3) if you gain a bye point or a forfeit point in a tournament, your final point total must exceed the expected point total by at least 2.0 points rather than only 1.0; and (4) all these calculations have been performed for every player on the USCF crosstables back to the beginning of 1991, so you may already have a Title!! To see your own norm history, go to your USCF "General" tab, click on "More" then click on "Norms history" to see where your Titles and norms have been achieved and how far you have progressed towards any particular Title. If you would like to examine the mathematical formulae used to calculate norms, click on "The USCF Title System" at the bottom of your personal "General" tab on USCF.

Mike Tedder also pointed out in his article that playing up can help you gain norms as long as you perform well. Performing well while playing against inferior competition makes gaining a norm more difficult as the expected result will be high. If your expected result in a 5-round tournament is 4.0 and you score a perfect 5.0, you are out of luck!

**General**

**More**

**Rtg. Supp.**

**Tnmt. Dir.**

**Tnmt. Hst**

Check the "More" Tab on your MSA page at the USCF website for your personal Title details.

**March 3rd, 2012**

## **Four States Open**

Location: La Quinta Inn, 3220 Rangeline Rd, Joplin, MO 64804

- ♙ Entry Fee: \$30 pre-registered, \$40 onsite
- ♙ Format: 4rd Game in 60. Two Sections: Open, and U1600
- ♙ Prizes: based on 30. Open: \$150, 120, 90. U/1600: \$90, 60, 30
- ♙ Registration: Sat. 8-8:45
- ♙ Rounds: 9am, 11am, 2pm, 4pm
- ♙ MCA membership required for Missouri residents

Advance entries/info:

Joplin Chess Club

2609 New Hampshire, Joplin, MO 64804

Martin.stahl@joplinchess.org (417) 483-1554

# Hall of Fame Opens

To kick off the public opening of the World Chess Hall of Fame on September 9, 2011, the World Chess Hall Of Fame celebrated with a ribbon cutting ceremony, a preview of the inaugural exhibitions, *OUT OF THE BOX: Artists Play Chess*, *Chess Masterpieces: Highlights from the Dr. George and Vivian Dean Collection*, and the World and U.S. Chess Halls of Fame and Highlights from the Permanent Collection. (see descriptions below) Also, we were honored to have Boris Gulko and Andrew (Andy) Soltis present as they were inducted into the 2011 class of the U.S. Chess Hall of Fame. To learn more about these important contributors to the game of chess, visit the Hall of Fame or go to the Hall of Fame section of our website (<http://www.worldchesshof.org/>) to get more information about them and all of the other inductees. In addition, Vera Menchik was posthumously inducted into the World Chess Hall of Fame.

Over 350 guests helped the WCHOF celebrate our opening including Chess Club and Scholastic Center of Saint Louis founders and donors to the World Chess Hall of Fame, Jeanne and Rex Sinquefield; exhibiting artists, Liliya Lifánova and Guido van der Werve; curators Bradley Bailey and Larry List; board members Paul Ha, Shelia Manion, Jennifer Shahade and Andrew Walker; and many chess greats such as Hikaru Nakamura, Ben Finegold, Yasser Seriawan, Susan Polgar, Marc Arnold, Jacek Stopa, Martha Fierro, Anna Zatonskih, Irina Kursh, Alexandra Kosteniuk, Kateryna Lahno, and Kevin Cao.

We were also honored to have John and Kay McCrary and Al Lawrence who were critical in founding the Chess Hall of Fame in 1986! Also, Shane Samole, the founder of the World Chess Hall of Fame and Sidney Samole Museum, Ruth Haring, President of the United States Chess Federation, and Harold Winston, Chairman of the United States Chess Trust.

***OUT OF THE BOX: Artists Play Chess*** is an exploration of artworks that consider chess both at the formal level and at the level of actual play. Comprising a wide breadth of media, these artworks demonstrate an integration of chess that goes beyond the visual, incorporating elements of play or strategy that invite the viewer to reflect on the game's intricate operations.

***Chess Masterpieces: Highlights from the Dr. George and Vivian Dean Collection*** celebrates the Deans' 50<sup>th</sup> year of collecting together and uses outstanding selected works to trace the development of the game of chess and the design of fine chess sets from the tenth to the early twentieth century. Sets come from Austria, Cambodia, China, England, France, Germany, India, Italy, Japan, Kashmir, Morocco, Persia, Russia, Syria, and Turkey. Among the works on display are ones owned or commissioned by Catherine the Great, Napoleon, Czar Nicolas II, and the British royal family.



US Inductee: GM Boris Gulko

## 2011 Hall of Fame Inductees



US Inductee: GM Andy Soltis



World HOF Inductee:  
Vera Menchuk

The following day, St. Louis area Boy Scouts played a game of human chess during an event co-hosted by the World Chess Hall of Fame and the Chess Club and Scholastic Center of Saint Louis to launch the first-ever Chess Merit Badge for the Boy Scouts of America. **Grandmaster Hikaru Nakamura participated in the event and stood in as the black King.** The game ended in a draw and **Women's Grandmaster Jennifer Shahade and Grandmaster Yasser Seirawan** provide live commentary during the event.



Boy Scouts enjoy some chess action on the street between the Chess Hall of Fame and the St. Louis Chess Club.



The audience was kept up on the game by commentators GM Yasser Seirawan and WGM Jennifer Shahade. Astronaut Greg Chamitoff watches.



GM Hikaru Nakamura joined the fun as the Black King in the live chess game.

NASA Astronaut and Eagle Scout Greg Chamitoff presented 15 Scouts with the badge and on Sept. 12 the new merit badge will be available to Scouts across the U.S. Also, as part of the event, Astronaut Chamitoff presented the Hall of Fame with the chessboard that flew on the space shuttle Endeavor as part his Official Flight Kit.



American Astronaut Greg Chamitoff assists Rex and Jeane Siquefield in awarding the first ever batch of Chess Merit Badges.



USCF Scholastic Coordinator Jerry Nash, and Ralph Bowman of Kansas, a leader in getting the Chess Merit Badge approved, participate in the ceremonies.

*The World Chess Hall of Fame, is a cultural institution that showcases art, history, science and sports through the lens of chess, officially opened on Sept. 9 in St. Louis's historic Central West End neighborhood located across the street from the Chess Club and Scholastic Center of Saint Louis. The Hall of Fame relocated from Miami and chose Saint Louis as its new home due to the city's growing reputation as a center of chess. Visit the Hall of Fame at <http://www.worldchesshof.org/>*

# Two on Two Two on Two Two on Two Team Championship

~ Mike Kummer ~

**Nick Karlow and Zach Kasiurak fight their way through some tough competition to claim the title.**

The 2-on-2 Team Championship featured 18 teams, and couple of college students upset a few of the favorites to claim the title. "Da Bums" from Washington University represented with a fine performance. Nick Karlow and Zach Kasiurak, ironically dressed in their finest attire, were on fire. The two experts swept the Master team of FM Doug Eckert and NM Richard Benjamin, and then were paired with the other Master team of NM Ron Luther and NM Bob Holliman in the final round.



The duo from Kansas City, appropriately named "Slow Motion," were a half point behind "Da Bums" and needed a win to take clear first. After NM Holliman and Kasiurak drew, all Karlow had to do was draw Luther to secure the title. But Karlow battled on to the win in a wild queen + rook + passed pawns endgame.

Chess Expert Joe Garnier and his pupil Clark Berry, team "Twilight Yay," took home the U3600 prize. Clark saved the team by defeating Ken West in the final round to ensure a round four match draw, which was good enough for the cash prize.

The U2800 prize was won by an ad hoc team, the "Daggers." Brandon Williams from Quincy, Ill., and Chess Club Ladder winner Matt Flint upset "The Smarties" in the final round to get in the money.

Thanks to everyone for showing up and supporting this fun event. Next year's Championship will feature a \$750 guaranteed prize fund, more team prizes, and a reduced entry fee.



Karlow: 3.5/4 on Board One

## English Opening

2 on 2 Champs

W: Zach Kasiurak (2081)

B: Bob Howe (1723)

1.c4 Nf6 2.g3 e6 3.Bg2 Be7 4.Nf3 b6 5.0-0 Bb7 6.b3 0-0 7.Bb2 c5 8.Nc3 a6 9.Rc1 d6 10.d4 cxd4 11.Qxd4 Nbd7 12.Rfd1 Qc7 13.Ng5 Bxg2 14.Kxg2 Rfd8 15.Nge4 Nc5



Kasiurak:  
3.5/4 on Board Two

16.Kg1 Rd7 17.b4 Ncxe4 18.Nxe4 Rad8 19.Rd2 Ne8 20.Qe3 Qb7 21.Ba1 d5 22.c5! bxc5 [22...dxe4 23.c6 Qxc6 24.Rxc6 Rxd2 is black's best try] 22...Rc7 23.Nxc5 Bxc5 24.bxc5 Qc6 25.Rb2 Rb7 26.Rxb7 Qxb7 27.c6 Qc8 28.Qb6 Nc7 29.Be5 Nb5 30.c7 Re8 31.Rc6 f6 32.Bb2 e5 33.e3 d4 34.a4 Nc3 35.Bxc3 dxc3 36.Rxc3 Qd7 37.Qxa6 Rc8 38.Qc6 Qxc6 39.Rxc6 Kf7 40.Kf1 Ke7 41.Ke2 Kd7 42.Rc4 e4 43.Kd2 f5 44.Kc3 Rxc7 45.Rxc7+ Kxc7 46.Kd4 Kb6 47.Ke5 g6 48.Kf6 Ka5 49.Kg7 Kxa4 50.Kxh7 g5 51.Kg6 1-0

*A draw can be obtained not only by repeating moves,  
but also by one weak move.*

Savielly Tartakower

# A Star is Born

~ by Joseph Garnier

Margaret Hua began her journey into the chess world on November the 23rd of 2005. The tournament was hosted by the Gateway chess league and after four rounds the 7 year old Margaret was rated 326. Little did we know this young lady would become one of the brightest stars in Missouri Chess.

I met Margaret in 2006 when her parents contacted me about lessons. As you might imagine, I was pleasantly surprised and very eager to have my first female student. When it comes to chess, girls are special because they're a rare. Even though the game is becoming more popular with girls, it's still a highly male dominated. For every young lady who pushes the pieces there are at least ten boys waiting to push back! If you're a man reading, I encourage you to imagine what it would be like if the tides were turned the other way.

When I first saw Margaret she was sitting at her kitchen table and wearing a pink bow in her hair the size of a Mexican sombrero. Her appearance was the polar opposite of what you'd expect from a chess player. She was small, shy, unassuming and very soft spoken. Even her tiny hands moved slowly as she glided the pieces around the board. . During our first few lessons her communication was limited to a combination of facial expressions and head nods. I remember wondering if she really understood anything I was teaching her. However, this skepticism was quickly dismissed when I began to notice her rapidly improving. It became clear that she was not only remembering what I had taught her, but she was also using it with a cunning you'd never expect from a sweet looking seven year old.

After a year of lessons Margaret's rating was topping 1300 and it was time for her to move on. I remember telling my father about the "highly talented student I was working with." He asked, "Do you think Margaret will ever be better than you?" I replied "It's not a matter of if, it's just inevitable."

Over the last few years Margaret's rating has continued to increase at a steady pace. More and more people have learned to fear the name Margaret Hua! Now at the age of 13 Margaret has achieved the coveted title of Expert. Missouri chess legend Ron Luther was the first to mention that she's the only girl from Missouri to achieve this height! Congratulations Margaret! This feat adds to a long list of accomplishments that include but are not limited to, competing in the 2008 World Youth Championship's in Vietnam, being the Missouri Polgar representative two years in a row, 28th highest 13 year old in the country and the 35th highest women in the country!

I hope this latest accomplishment further inspires Margaret to reach her full potential. In the next few years I imagine her rating will climb to new and impressive heights. I think I speak for everyone when I offer the following advice. "Margaret, go forth and kick ass!"

Here's the final victory that Margaret used to cross the 2000 mark.



## Pirc Defense

Missouri Invitational Championship

W: Margaret Hua (1983)

B: Bob Holliman (2200)

1.e4 Nf6 2.Nc3 d6 3.d4 g6 4.Nf3 Bg7 5.Be3 a6 6.a4 Bg4 7.h3 Bxf3 8.gxf3  
c6 9.f4 d5 10.e5 Ng8 11.Bd3 e6 12.Qg4 Nd7 13.f5 exf5 14.Bxf5 Nh6  
15.Bxh6 Bxh6 16.Bd3 Qg5 17.Qxg5 Bxg5 18.h4 Be7 19.f4 0-0-0 20.0-0-0  
Rdg8 21.Rdf1 f5 22.Rfg1 Nf8 23.Rg2 Ne6 24.Ne2 c5 25.c3 c4 26.Bc2 b5  
27.axb5 axb5 28.h5 Kd7 29.Rhg1 Rf8 30.hxg6 hxg6 31.Rxg6 Rh4 32.Rf1 Rf7 33.Rg8 Bf8 34.Rg6 Bh6  
35.Kd2 Nxf4 36.Nxf4 Rxf4 37.Rxh6 Rxf1 38.e6+ Ke7 39.exf7 Kxf7 40.Rd6 Rh1 41.Bxf5 Rh2+ 42.Kc1  
Rh1+ 43.Kc2 Rh2+ 44.Kb1 Rf2 45.Bd7 1-0

# Finding a vision for Missouri Scholastic Chess

By Tim Campbell

Over the years, I have had discussions with people about chess and its future. Often one of the points is that people believe the “death” of chess will come when computers become strong enough to “solve the game.” The more I have thought about it, the more I am convinced that the far greater threat to chess is a loss of passion for the game among kids. Many of us found that spark of interest in chess as kids exploring the many games available to us to play. We have to keep that spark alive with the current generation and future generations of kids for chess to survive by building scholastic chess opportunities for kids wherever they live, and it starts with each of us doing our part.

I believe Missouri scholastic chess has a great tradition and has great potential, but we have to have a united vision for it to truly meet that potential just as a good chess player must have a general game plan to find success in competition. Therefore I want to start the discussion with my vision for scholastic chess in Missouri. When I think of Missouri scholastic chess, I see:

- 1 Chess community that supports opportunities for kids to learn tournament chess and compete no matter where they live in the state.** We have strong pockets of scholastic chess activity in St. Louis, Kansas City and mid-Missouri, but we need to expand those pockets. This will require public and private coaches, tournament directors and current adult chess players to work together to make those opportunities come alive. We have to put aside our differences and recognize that each of us has a part to play in the success of the Missouri scholastic chess effort. Speaking as a private coach, I believe there will always be a demand for private coaching in chess as there is in other competitive sports such as tennis, football and baseball. However, there just are not enough of us to reach all of the kids who might want to learn chess and compete. We need a strong network of volunteer coaches who will reach and support those kids who do not have the time, access or economic means to make using a private coach worthwhile for their family situation. While I would hate to back to working a job that did not involve kids and chess, I would be excited to see such a network put me out of business because they were meeting the demand.
- 2 State scholastic tournament that is a destination activity for kids from across the state and prepares and encourages kids to push toward national scholastic competition as well as adult competition.** The MCA/Gateway partnership has created a state tournament model that has served the state scholastic community well for three decades. However, it is a victim of its own success as it grew to the point that it has become increasingly expensive to find mid-Missouri facilities that can accommodate the peak attendance of a few years ago. This has driven up entry fees to the point that they are becoming a limiting factor for some school groups considering whether to participate in the tournament. To bring the flexibility back into the process that will allow the tournament to become more economical to run and thereby lower the costs for schools and individual participants, I believe the MCA will ultimately have to raise the funds to take over financial responsibility and administration of the tournament. Having participated in a frustrating effort to find cheaper but adequate facilities for the tournament this year, I believe it is unfair to ask Gateway to continue carrying the financial burden of the tournament, but also endure the model tweaks and increased flexibility in the tournament structure and scheduling that MCA officials may see as necessary to revitalize the annual tournament. Don't misread my sentiment. Gateway has done a great job with this tournament. Gateway will always be a vital part of any state scholastic effort whether it is supplying tournament administration team members or simply preparing and supporting kids from the St. Louis area for the state competition. However, it is time for the MCA to step up and run this state tournament as it does its other sanctioned state championships instead of continuing to be a name-only participant.

- 3 **A state scholastic community that offers and supports opportunities for kids to compete in tournament chess from kindergarten to college at the local, state and national levels.** There is no reason Missouri cannot be a scholastic chess powerhouse like Texas where successful scholastic competitors have the chance to play from kindergarten thru college, even earning chess scholarships for their chess merit, without leaving their home state. The key is establishing competitive collegiate Missouri programs that will drive interest at the secondary and elementary school levels.
  
4. **A state scholastic community that has a strong and established presence at national competitions.** It is not unusual for Missouri to be in the top 10 of attendance by state in at least one national scholastic competition each year. And when we show up in force, our kids generally do well. They do not have to take a back seat to the competitors from New York and Texas. They can hang with them. Let's build support and excitement for national competition to the point where it isn't a question whether Missouri will be a presence at national scholastic competitions, but whether other states' contingents are prepared to compete with the size and power of the Missouri delegation at each competition. Maybe we could even have a statewide team room or rooms out of which the Missouri schools work during the competitions just like the powerhouse schools from New York do now.

Those are some big dreams, but I have always believed in shooting for the top if you are going to shoot at all. I believe we as a state chess community can do it. I ask each of you to do consider two actions.

First, figure out what your vision of Missouri scholastics would be and communicate those ideas to the MCA board members from your region. I have offered my vision as a starting point for the discussion. The more ideas we have, the more likely we will find ideas that have broad support and can move Missouri scholastic chess forward.

Second, commit yourself to preparing at least four kids for the state scholastic tournament March 10 at the Capital Plaza Hotel in Jefferson City. Even you cannot bring them, do what you can to prepare them and help them find a way to get to the competition. If each adult MCA member does this, the tournament will return to its peak attendance, and we will get a glimpse of the great potential that lies ahead for Missouri scholastics.

While you are doing that, I assure that I and the other MCA board members will be looking at what we can do to support Missouri scholastic chess and its future growth. Help us keep the ongoing discussion alive, and help us move from discussion to action. The future of chess is in our kids' hands. Let's spark the chess passion in them.

## **Attention Tournament Directors**

### **The MCA will support your Event!**

**The Missouri Chess Association will reimburse tournament directors/organizers \$1 per player up to an annual maximum of \$100 when they require MCA membership for Missouri residents in their events.**

**Free advertising in the Missouri Chess Bulletin and on the popular MCA website is always provided.**

See [www.mochess.org/tdcorner](http://www.mochess.org/tdcorner) for full details.

# UPCOMING TOURNAMENTS



## January 13-15th The Waldo Odak Memorial

A Three day event to celebrate the life of Waldo Odak and Benefit ALS Research.

Friday January 13th: Blitz Tournament: 5/SS, G/5. \$200 Guaranteed!! Entry--\$15 by 1/12, \$20 at the door.

Registration.: 6:00-6:45 PM. Rd 1: 7 PM. 1st -\$60, 2nd \$50, 3rd -\$35. Top U2000--\$30. Top U1700--\$25.

Saturday-Sunday 14th-15th. Waldo Odak Open Tournament: 5/SS, G/85. Two Sections: Open & U1800. Entry Fee: \$40 by 1/13 for annual members, \$50 donation at door. 100% of the entries will be donated to ALS research. \$2,000

GUARANTEED!! Open: 1st-3rd: \$250-\$175-\$100. Expert: \$200-\$150. Class A: \$150-\$75. U1800 Section: 1st-2nd: \$200-\$100. Class C: \$125-\$75. Class D: \$125-\$75. U1200/UNR: \$125-\$75. Registration: 10:00-10:45 Round Times:

Saturday: 11, 2:30, 6. Sunday: 11, 2:30. Two 1/2 point byes available if declared before round 2. MCA Membership required from \$5. OSA. Info: 314-361-CHESS. [info@saintlouischessclub.org](mailto:info@saintlouischessclub.org).

Friday January 13th -GM Benjamin Finegold Simul: Register by 7:45pm \$15 by 1/12 \$20 at the door

## January 28th—Fischer Open—Columbia

3SS, G/75. UMC Memorial Union room S203, 518 Hitt St., Columbia MO. Directions: From I-70 exit 126, south on Providence, east on Rollins, north on Hitt. Reg: 9:30-10:15. Rds: 10:30, 1:15, 4:00. EF: \$1. No prizes-Just the satisfaction of playing well. Two rating-equivalent sections if 18+ players. Entries/Info: Charles Ward, 2400 Cimarron Drive, Columbia, MO 65203, 573-443-6685.

## February 18th—Metro Class Championships - St. Louis

3rd G/85 d/5 Entry Fee: \$35, \$30 for annual members of the club if registered by 2/17. MCA membership req'd from \$5. Prizes: \$1,200 GUARANTEED: \$200 + Trophy for 1st in each Section: M/X, A, B, C, D, U1200/UNR. Players must compete in their own class. Reg.: 9-9:45. Rounds.: 10, 1:30, 5. One 1/2 point bye if declared before round 1. MCA Membership required from \$5. OSA. Entries/Info: 4657 Maryland Ave., Saint Louis, MO 63108, : 314-361-CHESS [info@saintlouischessclub.org](mailto:info@saintlouischessclub.org).

## March 3rd: 3's are Wild Extravaganza—St. Louis

3SS, G/85. Chess Club & Scholastic Center of Saint Louis, 4657 Maryland Ave., Saint Louis, MO 63108. Entry Fee: \$10, \$3 for annual members of the club if registered by 3/2. 3 Sections: 1800+, 1400-1799, Under 1400. Winner of each section receives a \$33 Gift Certificate to the club. Registration.: 9-9:45. Rounds.: 10, 1:30, 5. One 1/2 point bye if declared before round 1. MCA Membership required from \$5. OSA. Entries/Info: 4657 Maryland Ave., Saint Louis, MO 63108, or online at [saintlouischessclub.org](http://saintlouischessclub.org). 314-361-CHESS, [info@saintlouischessclub.org](mailto:info@saintlouischessclub.org).

## March 3rd: Four States Open — Joplin

4rd G/60 Two Sections, Open and U/1600. La Quinta Inn, 3320 Rangeline Rd, Joplin, MO 64804. Entry Fee \$30 preregistered, \$40 at site. MCA membership required Prizes: based on 30 entries. Open \$150, 120, 90 U/1600 \$90, 60, 30 Registration: 8am-8:45am. Rounds 9am, 11am, 2pm, 4pm. Send registration to Joplin Chess Club, 2609 New Hampshire, Joplin MO 64804. [martin.stahl@joplinchess.org](mailto:martin.stahl@joplinchess.org) (417) 483-1554 please bring clocks and sets.

## March 10th—Mizzou Quads - Columbia

UMC Memorial Union room S203, 518 Hitt St., Columbia MO. Directions: From I-70 exit 126, south on Providence, east on Rollins, north on Hitt. Entries/Info: Charles Ward, 2400 Cimarron Drive, Columbia, MO 65203, 573-443-6685.

*“A player can sometimes afford the luxury of an inaccurate move, or even a definite error, in the opening or middlegame without necessarily obtaining a lost position. In the endgame ... an error can be decisive, and we are rarely presented with a second chance.”*

*~ by Paul Keres*

## March 16-18th - Mid America Open! - St. Louis

5SS, 40/2, SD/1, d/5 (2-day option, rds 1-2 G/75,d/5). Crowne Plaza Hotel St. Louis-Clayton, 7750 Carondelet Ave., St. Louis, MO 63105 (I-64 W/US 40-W Exit 32B, 1.2 miles north on Hanley Rd). Prizes: 18,000 based on 220 paid entries (re-entries & \$60 off entries count half, U900 Section 1/4), \$12,000 (2/3 each prize) guaranteed. In 7 sections: Open: \$2000-1000-500-300, top U2300 \$900, U2200 \$800, U2100 \$700. FIDE.

Under 2000: \$1400-700-400-200.

Under 1800: \$1300-700-400-200.

Under 1600: \$1200-600-300-200.

Under 1400: \$1000-500-250-150.

Under 1200: \$1000-500-250-150.

Under 900: \$200-100, trophies to

first 5, top U700, U500, Unrated. Prize limits: Unrated may not win over \$200 in U1200, \$400 U1400, \$700 U1600, or \$900 U1800. If any post-event rating posted at uschess.org 12/15/11-3/15/12 is more than 30 points over section maximum, prize limit \$500. Balance of any limited prize goes to next player(s) in line. Top 6 sections

Entry: 3-day \$109, 2-day \$108 mailed by 3/8, all \$110 online at chesstour.com by 3/13, \$115 phoned to 406-896-2038 by 3/15 (entry only, no questions), \$130 at site. \$60 less to unrated in U1200 or U1400. U900 Section Entry Fee: All \$80 less No checks, credit cards OK. GMs free, \$100 deducted from prize. Re-entry \$60; not available in Open Section. MCA membership. (\$5) required for MO residents. 3-day schedule: Reg ends Fri 6pm, rds Fri 7 pm, Sat 11 & 6, Sun 10 & 4:15. 2-day schedule: Reg ends Sat 10 am, rds Sat 11, 2:30 & 6, Sun 10 & 4:15. Byes: OK all, limit 2; Open must commit before rd 2, others before rd 3. Hotel: \$89-89, 888-303-1746, 314-726-5400, reserve by 3/2  
Entries: Continental Chess, Box 249, Salisbury Mills, NY 12577. Info: DirectorAtChess.us, 845-496-9658.

Visit [www.mochess.org/Tournaments](http://www.mochess.org/Tournaments) for an up-to-date calendar

# Regional Chess Clubs

## Heart of America Chess Association

Noland Baptist Church  
4505 S Noland Rd. Independence, MO 64055  
Meets: Friday nights 7-11pm  
Community Club, No fee to play  
Contact Bob Holliman-chess\_entries@comcast.net

## Westport Chess Club

Westport Flea Market 817 Westport Rd. Kansas City, MO  
Meets: Tuesdays 6:30 to 11:00 PM  
\$2 for adults, \$1 for Students and under 18  
Contact Ray Birt-westportchessclub@gmail.com  
Website-http://www.westportchessclub.org

## Chess Club and Scholastic Center of St. Louis

4657 Maryland, Saint Louis, Missouri 63108  
Club open Tuesday-Sunday  
Weekly Blitz, Bughouse, Lessons, and Tournaments  
Contact Tony Rich-trich@saintlouischessclub.org  
or call 314-361-CHESS  
Website-http://saintlouischessclub.org

## St. Louis Chess Club

St. Louis Bread Company 6630 Delmar Ave. (U-City)  
Chess played every night 6-9pm, most players come week-ends  
Contact Joesph Garnier-chessoholic@sbcglobal.net

## Game Nite

South County Center mall, 30 South County Center Way  
St. Louis, MO 63129  
Meets: Every Monday evening 6pm-9pm  
Free to play  
Contact: Chris Prysock (gameniteshop@gmail.com)  
(314) 894-2684 [www.gameniteshop.com](http://www.gameniteshop.com)

## St. Peters Chess Club

Liberty Classical School, O'Fallon, MO 63366  
Meet on Friday: 4:30—6pm  
Membership: \$60 yearly. Private Lessons: \$20 per hour  
Contact Tim Nesham-tim.nesham@gmail.com

## Univ. of Missouri Chess Club

Memorial Union (518 Hitt Street) Room S203, Columbia  
Meets: Mondays 7 to 10 PM August-May  
Contact Steve Brieztkes [brieztkes@health.missouri.edu](mailto:brieztkes@health.missouri.edu)  
Website-http://muchess.students.missouri.edu

## Missouri S&T Chess Club

Havener Center, Shamrock Room Missouri S&T  
1346 N. Bishop, Rolla, MO 65409  
Meets: Thursdays 7 to 9 PM  
Contact Thomas Rehmeier-trrthf@mst.edu

## Springfield Park Board Chess Club

Southside Senior Center 2215 S. Fremont Ave., Springfield  
Meets: Fridays 6:30 to 11:00 PM  
Contact Joe Brozovich- jmbroz@att.net or call 417-882-3992  
Website- <http://www.springfieldparkboardchessclub.com>

## Mineral Area Chess Club

McDonald's (Columbia and Hwy 67)  
1700 W. Columbia St. Farmington, MO 63640  
Meets: Monday nights 6:30-11pm  
Contact: James Lyons: jaalyon@sbcglobal.net

## Your Club Here!

Email [bdhowe@yahoo.com](mailto:bdhowe@yahoo.com) to have your club advertised  
in the MCB and the MCA Website.

# Scholastic Schedule

## Local Events

January 14- Sperreng Middle School	St. Louis	www.gatewaychess.org
January 21 - Parkade January Open	Columbia	email TRJCAMP@aol.com
January 28- Lindbergh High School	St. Louis	www.gatewaychess.org
February 11- Sperreng Middle School	St. Louis	www.gatewaychess.org
March 10th- State Championships!!	Jeff City	www.gatewaychess.org
March 17- Chaminade College Prep	St. Louis	www.gatewaychess.org
March 24 - Tournament of Champions	Columbia	email bdhowe@yahoo.com
March 24- Missouri All Girls	Columbia	email bdhowe@yahoo.com

## Upcoming National Events:

### National Youth Action

**December 9th-11th**

NYA East—Florida  
NYA West—California

### Spring Nationals 2012

High School—April 13-15 Minneapolis  
Junior High—April 27-29 San Diego  
Elementary—May 11-13 Nashville

## Top Adult Tournaments in U.S. (May 10-May 11)

1 World Amateur Team	1171	02/19/11	Parsippany, NJ
2 World Open	1004	06/28/11	Philadelphia, PA
3 North American Open	672	12/26/10	Las Vegas, NV
4 Chicago Open	622	05/26/11	Wheeling, IL
5 National Open	614	06/10/11	Las Vegas, NV
6 National Chess Congress	523	11/26/10	Philadelphia, PA
7 Liberty Bell Open	453	01/14/11	Philadelphia, PA
8 Philadelphia Open	449	04/24/11	Philadelphia, PA
9 Manhattan Open	408	08/22/11	New York, NY
10 U.S. Open	367	07/30/11	Orlando, FL
11 Atlantic Open	347	08/29/10	Washington, DC
12 U.S. Class	331	10/01/10	Houston, TX
13 Continental Class Champs	313	10/07/10	Arlington, VA
14 King's Island Open	301	11/12/10	Mason, OH
15 Chicago Class	292	07/15/11	Oakbridge, IL
16 Southwest Open	280	09/02/11	Dallas, TX
17 California Class	265	11/26/10	Burlingame, CA
18 U.S. Amateur Team West	241	02/19/11	Woodland Hills, CA
19 Midwest Class	236	10/17/10	Wheeling, IL
20 Western States Open	235	10/22/10	Reno, NV
33 Mid-America Open	185	03/18/11	St. Louis, MO
69 Thanksgiving Open	130	11/26/10	St. Louis, MO

*Courtesy of Walter High—North Carolina Chess Blog*

# Featured Game

~ Al "analysis" Howlett ~

St. Louis Open 2010

W: Iryna Zenyuk (2280)

B: Al Howlett (1886)

**1.d4 Nf6 2.Nf3 e6 3.c4 b6** Here I spent 8 minutes deciding whether to play c5 or b6. I've played the riskier Benoni for many years, but I've been seriously studying the Queen's Indian Defense this year and there was no guarantee that Iryna would play 4.d5. After the game she said she would have..

**4.a3** Petrosian Variation; avoiding the Bb4 pin and Nimzo or Bogo Indian transpositions

**4...Bb7 5.Nc3 Be7** After the game, Iryna told me that d5 must be played here. Now, I just ran this position through Shredder for an hour, and it gave Be7 as best, but get this: When I play blitz against Shredder, and play 5...Be7, it always instantly responds with 6.d5. Doggone software! but I guess the point is working to prevent e4, which white gets in easily after the text.

**6.d5** (diagram) **0-0 7.e4 exd5 8.cxd5 d6 9.Bd3 Nbd7 10.b4 a5** Iryna grants me a little light. Either 10.0-0 or 10.Nd4 seems to hold an edge for white, but after the text Shredder says my response is best, and that I've equalized. **11.Bb2 c6 12.dxc6 Bxc6 13.0-0 axb4 14.axb4 Ne5** This is the only move that I played right away, as I had fallen behind 15 minutes or so. I thought the weak b pawn could become a target once I got d5 in. Although I've not played poorly the last few moves, white has obtained a slight advantage.

**15.Nd4 Nxd3?** (diagram) Going from one extreme to the other, this is the move that I spent the most time on (20 minutes) as I had a feeling that I had to get it right or it would be lights out. Play a good move right away, only to spend a ridiculous sixth of my time on a blunder. Shredder said that I should trade rooks here then play Bd7 and I'm still in the game. Iryna thought it was best to trade rooks, then play Qa8 taking the initiative. Instead, I opted to trade off my best minor piece for her worst, connect her rooks, and setup easy access for her queen to the deadly g3 square. I left this position (before my 15th move that is) set up on my oversized board and have looked at it numerous times over several days. This is where it all starts to fall.



White starts an aggressive plan early, with 6. d5

Black spends 20 minutes, then plays 15..Nxd3?

**16.Qxd3 Bb7** the inferior retreat diagonal, leaving the f5 square unaccounted for. Bd7 was not to be missed against a player on Zenyuk's level.

**17.Rxa8 Bxa8** Further removing the bishop from where it can control f5

**18.Nf5** Now this is where I'm grabbing my head in that painful looking photo that Bob Holliman took. I don't see a way to prevent Qg3, or a way to accurately defend once it's played. Shredder considers 18...Re8 to be my best attempt at survival (+1.63), but now being behind about 1/2 an hour, I opted to trade my d pawn for her b pawn and hopefully give her too many decisions to make an accurate one.

**18...d5** Okay.... Okay, side note here; while waiting for her response, I hear Ron Luther say something to his opponent about my being lefthanded, then I look over and notice that he's crossing out a move that he has written on my scoresheet!

**19.exd5 Bxb4** a last chance to run with Re8; Bd6 guards the g3 square at least **20.Qg3** and there is no good defense. I played

**20...g6 21.Ne4!!** .. LIGHTS OUT. (diagram) If I take the knight (or move my knight at all), then Nh6 is mate. If I play 21...Be7, then 22.Nxe7+, Qxe7 23.Nxf6+ and I either part with my queen or succumb to target practice. **1-0**



The nail in the coffin, 21. Ne4!!

# RECENT GAMES FROM MISSOURI CHESS



## Nimzowitch Defense

MO Invitational Championship

W: Mark Ferber (2151)  
B: Ron Luther (2200)

1.Nf3 d6 2.d4 Bg4  
3.e4 Nf6 4.Nc3 Nc6  
5.Be3 e5 6.Bb5 Nd7  
7.d5 Ne7 8.h3 Bxf3

9.Qxf3 a6 10.Bd3 Ng6 11.g3 Be7 12.h4 h5 13.Bf1 c5  
14.dxc6 bxc6 15.Bh3 Nb6 16.Rd1 Qc7 17.0-0 Rb8  
18.Qe2 a5 19.a4 Nd7 20.b3 Nf6 21.Rd3 Rb4 22.Bc1  
Rd4 23.Rfd1 Rxd3 24.Rxd3 Nf8 25.f3 Ne6 26.Be3 0  
-0 27.Kg2 Rd8 28.Rd1 Qb7 29.Bf2 g6 30.Kh2 Qb4  
31.Na2 Qb8 32.Nc3 Kh7 33.Bxe6 fxe6 34.Qc4 Qc8  
35.Bb6 Rf8 36.Bxa5 d5 37.Qe2 Nd7 38.Nb1 Bc5  
39.Rf1 Nf6 40.Nd2 Qb8 41.Bc3 Bd6 42.Kg2 Qc7  
43.Re1 d4 44.Bb2 Bb4 45.Rf1 Bxd2 46.Qxd2 c5  
47.Ra1 c4 48.Bc1 Kg8 49.b4 Qf7 50.Qe2 Qc7 51.b5  
Ra8 52.Bd2 Qc5 53.Qe1 c3 54.Bg5 Nh7 55.Bh6  
Qb4 56.Qc1 Rxa4 57.Rxa4 Qxa4 58.Qb1 Qa3  
59.Bc1 Qc5 60.b6 Qc4 notation ends 1-0

## Two Knights Defense

MO Invitational Championship

W: Frank Smith (2052)  
B: Richard Benjamin (2200)

1.e4 e5 2.Bc4 Nc6  
3.Nf3 Be7 4.0-0 Nf6  
5.d3 0-0 6.c3 d5  
7.exd5 Nxd5 8.h3

Bf5 9.Be3 e4 10.Bxd5 Qxd5 11.dxe4 Bxe4 12.Qxd5  
Bxd5 13.Nbd2 Rad8 14.Nd4 Nxd4 15.Bxd4 f5  
16.Nb3 b6 17.Rfe1 Bg5 18.Be5 c5 19.f4 Bh4 20.Re3  
Rd7 21.g3 Be7 22.Rae1 Be4 23.Kf2 a5 24.Nc1 g5  
25.fgx5 Bxg5 26.Bf4 Bf6 27.Bh6 Rfd8 28.Ne2 Rd2  
29.Rxe4 fxe4 30.Bxd2 Rxd2 31.Ke3 Rxb2 32.Kxe4  
Rxa2 33.Kd5 Kf7 34.Kc4 Rb2 35.Nf4 Be7 36.Nd5  
b5+ 37.Kd3 c4+ 38.Ke4 Bc5 39.Rf1+ Rf2 40.Rxf2+  
Bxf2 41.Nc7 b4 42.cxb4 axb4 43.Nb5 Ke6 44.Nc7+  
Kd6 45.Ne8+ Kc5 46.Nf6 b3 47.Nd7+ Kc6 48.Nf6  
b2 49.Nd5  
b1Q+ 0-1

## Sicilian Defense - Najdorf

MO Invitational Championship

W: Alex Vergilesov (1966)  
B: Abishek Mallela (2169)

1.e4 c5 2.Nf3 d6 3.d4  
cxd4 4.Nxd4 Nf6  
5.Nc3 a6 6.Bc4 e6  
7.Bb3 b5 8.f3 Nbd7

9.Be3 Nc5 10.g4 Bb7 11.Qd2 Rc8 12.h4 Qa5 13.h5  
h6 14.0-0 b4 15.Nce2 Nfd7 16.a3 Nxb3 17.cxb3 d5  
18.exd5 Qxd5 19.axb4 e5 20.Nc3 Qd6 21.Rae1 Kd8  
22.Nf5 Qxd2 23.Bxd2 g6 24.hxg6 fxg6 25.Nh4 Rg8  
26.Rd1 Be7 27.Ng2 Bxb4 28.Bxh6 g5 29.Ne4 Bxe4  
30.fxe4 Bc5+ 31.Kh2 Rh8 32.Rf6 Be7 33.Rxa6 Bf8  
34.Ra7 Rxh6+ 35.Kg3 Rd6 36.Rf1 Nf6 37.Ne3  
Nxe4+ 38.Kh2 Rd2+ 39.Kg1 Bc5 0-1

## Caro-Kann

Show Me Classic

W: Robert Taras (1867)  
B: Dan Tuttle (1429)

1.e4 c6 2.d4 d5  
3.Nd2 dxe4 4.Nxe4  
Bf5 5.Ng3 Bg6 6.Nf3  
Qc7 7.Ne5 e6 8.Bf4

Bd6 9.Nxg6 hxg6 10.Bxd6 Qxd6 11.Ne4 Qb4+  
12.c3 Qe7 13.Bd3 Nd7 14.Qa4 Ngf6 15.0-0-0 Nxe4  
16.Bxe4 Nb6 17.Qa5 Rh5 18.Qa3 Qxa3 19.bxa3  
Nc4 20.a4 Ra5 21.Kc2 0-0-0 22.Kb3 Nb6 23.c4  
Kc7 24.c5 Nxa4 25.Rd3 f5 [25...f5 26.Bf3 Nxc5+  
27.dxc5 Rxd3+] 0-1

## London System

MO Amateur Championship

W: David Askins (1848)  
B: Matthew Larson (1758)

1.Nf3 Nf6 2.d4 g6  
3.Bf4 Bg7 4.h3 d6  
5.e3 Nbd7 6.c3 0-0  
7.Be2 c5 8.0-0 Rb8

9.a4 b6 10.Nbd2 a6 11.b4 Nd5 12.Qb3 Nxf4  
13.exf4 cxd4 14.cxd4 Bb7 15.f5 gxf5 16.Rac1 Rc8  
17.Qb1 e6 18.Rxc8 Qxc8 19.Rc1 Qb8 20.Bc4 Bxf3  
21.Nxf3 b5 22.axb5 axb5 23.Be2 Nf6 24.Rc6 Nd5  
25.Rc2 Qb6 26.Qb3 Ra8 27.h4 h6 28.Kh2 Kf8  
29.Ra2 Rxa2 30.Qxa2 Nxb4 31.Qa8+ Ke7 32.Qg8  
Bxd4 33.Nxd4 Qxd4 34.Kg1 Qa1+ 35.Bf1 Qe1  
36.Qb8 Nd5 37.Qxb5 Nc3 38.Qb2 Ne4 39.Qb7+  
Kf8 40.Qb8+ Kg7 41.Qb2+ e5 42.Qe2 Qxe2  
43.Bxe2 d5 44.Bb5 d4 45.Kf1 f6 46.Ke1 Kf7  
47.Bd7 Nd6 48.Ke2 Ke7 49.Ba4 Ne4 50.Bc2 Nc3+  
51.Kd2 e4 52.Bb3 Kd6 53.Bc4 Nd5 54.Ba6 Ke5  
55.Bb7 e3+ 56.fxe3 dxe3+ 57.Ke2 f4 58.Ba6 Nc7  
59.Bb7 f5 60.Kd3 Ne6 61.Bf3 Nd4 62.Bd1 Nc6  
63.Bh5 Ne7 64.Bf3 Ng6 65.h5 Nh4 66.Bc6 Kf6  
67.Ke2 Kg5 68.Be8 Kg4 69.Bg6 Kg3 70.Kf1 f3  
71.gxf3 Kxf3 72.Ke1 e2 0-1

## English Opening

MO Amateur Championship

W: Jeffery Kovalic (1899)  
B: Peter Harris (1665)

1.c4 Nf6 2.g3 g6  
3.Bg2 Bg7 4.Nc3 0-  
0 5.e4 c5 6.Nge2  
Nc6 7.0-0 d6 8.d3

a6 9.a3 Ne8 10.Rb1 Nc7 11.Nd5 Nxd5 12.exd5  
Ne5 13.f4 Ng4 14.b4 cxb4 15.Rxb4 b5 16.Bf3  
Qb6+ 17.Kg2 Ne3+ 18.Bxe3 Qxe3 19.Rb3 Qc5  
20.cxb5 axb5 21.Qc1 Qa7 22.Nc3 Bd7 23.Nxb5  
Bxb5 24.Rxb5 Rfc8 25.Qb1 Qxa3 26.Rb7 Qa2+  
27.Qxa2 Rxa2+ 28.Rf2 Rxf2+ 29.Kxf2 Bd4+  
30.Kg2 Rc2+ 31.Kh3 Kf8 32.Rb1 Rf2 33.Bg2 Kg7  
34.Rf1 Rd2 35.Rf3 h6 36.g4 e6 37.dxe6 fxe6  
38.Kg3 Kf6 39.h4 Ke7 40.Bh3 e5 41.g5 exf4+  
42.Kxf4 h5 43.Ke4 Be5 44.Kd5 Ra2 45.Bf1 Ra4  
46.Kc6 Rxh4 47.Re3 Kf7 48.Rf3+ Rf4 49.Rxf4+  
Bxf4 50.Kd7 Bxg5 51.Kxd6 Kf6 52.Bh3 Bf4+  
53.Kd5 g5 54.Ke4 Bc7 55.Kf3 Ke5 56.Bd7 Kd4

57.Bf5 Kc3 58.Bg6 g4+ 59.Kg2 h4 60.Bf5 h3+  
61.Kh1 ½-½

**Ruy Lopez**

MO Amateur Championship  
W: Sherrod Curry (715)  
B: David Braton (1020)

1.e4 e5 2.Nf3 Nc6  
3.Bb5 Nf6 4.d3 h6  
5.0-0 a6 6.Bxc6 dxc6  
7.Re1 Bg4 8.Nbd2

Bc5 9.Nb3 Bb6 10.Be3 Bxe3 11.Rxe3 0-0 12.h3 Bh5  
13.Nbd2 Qd7 14.Nf1 Qe6 15.N1h2 b5 16.g4 Bg6  
17.Qe1 a5 18.Qc3 a4 19.Qxe5 Qxe5 20.Nxe5 Bh7  
21.Nxc6 Nd7 22.Nf3 Rfe8 23.g5 hgx5 24.Nxg5 Bg6  
25.e5 Nc5 26.d4 Ne6 27.Nxe6 Rxe6 28.d5 Ree8  
29.c3 Bf5 30.d6 cxd6 31.exd6 Rxe3 32.fxe3 Ra6  
33.Ne7+ Kf8 34.Nxf5 g6 35.d7 Ra8 36.Ng3 Ke7  
37.Rd1 Rd8 38.h4 f6 39.h5 gxh5 40.Nxh5 Kf7  
41.Kg2 Kg6 42.Ng3 Kf7 43.Nf5 Kf8 44.Nd6 Rxd7  
45.Kf3 Kg8 46.Kf4 Kf8 47.Kf5 Rd8 48.Kxf6 Kg8  
49.e4 1-0

**Modern Defense**

MO Invitational Championship  
W: Joseph Garnier (2050)  
B: Ron Luther (2200)

1.d4 g6 2.Nf3 Bg7  
3.Bf4 d6 4.e3 Nd7  
5.Be2 e5 6.Bg3 Ne7  
7.h3 Nf5 8.Bh2 exd4

9.exd4 0-0 10.0-0 Qf6 11.c3 Nb6 12.Nbd2 Re8  
13.Re1 Bd7 14.Qc2 Ba4 15.b3 Bc6 16.Bd3 Nh4  
17.Nxh4 Qxh4 18.Bg3 Qh5 19.Be4 Bxe4 20.Rxe4  
Rxe4 21.Qxe4 Qd5 22.Re1 Qxe4 23.Rxe4 Kf8  
24.Kf1 Nd5 25.c4 Nc3 26.Re3 Nxa2 27.d5 Bh6 28.f4  
g5 29.Rf3 Re8 30.fgx5 Bxg5 31.Bf4 Bxf4 32.Rxf4  
Nc1 33.Nf3 h6 34.Rh4 Kg7 35.Rg4+ Kh7 36.Rh4  
Nxb3 37.g4 Kg7 38.Rh5 a5 39.Nh4 a4 40.Nf5+ Kf6  
41.Rxh6+ Kg5 42.Kf2 Kf4 43.Rf6 Nc5 44.Rxf7 a3  
45.Ne3+ Ke4 46.Ke2 Kd4 47.Kd2 a2 48.Nc2+ Kxc4  
49.Rf1 b5 0-1

**Sicilian Defense - Kan Variation**

MO Amateur Championship  
W: Clark Berry (1410)  
B: David Askins (1848)

1.e4 c5 2.Nf3 e6  
3.Nc3 a6 4.d4 cxd4  
5.Nxd4 Qc7 6.Be2  
Nf6 7.Be3 b5 8.a3

Bb7 9.Bf3 b4 10.axb4 Bxb4 11.Nde2 Bxe4 12.Bxe4  
Nxe4 13.Bd2 Nxd2 14.Qxd2 0-0 15.0-0 d5 16.Qd3  
a5 17.Nb5 Qb6 18.Nbd4 Nc6 19.Nxc6 Qxc6 20.Nd4  
Qb6 21.Nf3 Be7 22.Rab1 Bf6 23.c3 Qc7 24.Rfe1  
Rfb8 25.Qe2 Rb7 26.Rec1 Rab8 27.Qd2 Qc4  
28.Rc2 a4 29.Ra1 g6 30.Qc1 Rb6 31.Qb1 Qc6  
32.Qa2 Qb7 33.Rb1 Ra8 34.Rbc1 Rb3 35.Qb1 a3  
36.h3 Rxb2 37.Rxb2 axb2 0-1

- A master looks at every move he would like to make, -  
- especially the impossible ones -  
Irving Chernev

**Benoni Defense**

MO Invitational Championship  
W: GM Ben Finegold (2586)  
B: Richard Benjamin (2203)

1.d4 c5 2.d5 f5 3.e4  
fxe4 4.Nc3 Nf6  
5.g4 d6 6.g5 Bg4  
7.Bb5+ Kf7 8.Be2

Bxe2 9.Qxe2 Ne8 10.g6+ hxg6 11.Nxe4 Nc7  
12.Ng5+ Kg8 13.Ne6 Nxe6 14.Qxe6+ Kh7  
15.Qh3+ Kg8 16.Qe6+ Kh7 17.Nf3 Qd7 18.Ng5+  
Kh6 19.Qe4 Kh5 20.Ne6 1-0

**Reti Opening**

MO Invitational Championship  
W: Nick Karlow (2076)  
B: Mark Ferber (2151)

1.Nf3 d5 2.g3 Bf5  
3.c4 dxc4 4.Qa4+  
c6 5.Qxc4 e6 6.Bg2  
Be7 7.Nc3 Nf6 8.0-

0 h6 9.e4 Bh7 10.Re1 0-0 11.e5 Nd5 12.d4 Nb4  
13.d5 cxd5 14.Qg4 Bf5 15.Qh5 Bg6 16.Qg4 Nc2  
17.Nd4 Nxe1 18.Nxe6 fxe6 19.Qxg6 Nxg2  
20.Bxh6 Rf7 21.Rd1 Qb6 22.Rd2 Bf8 23.Kxg2  
Na6 24.Be3 Qc6 25.Rd4 Bc5 26.Rh4 Bxe3  
27.Qh7+ Kf8 28.fxe3 Ke7 29.Rg4 Raf8 30.e4 d4  
31.Qh4+ Kd7 32.Nd5 exd5 33.Kh3 Qh6 34.e6+  
Qxe6 35.exd5 0-1



**USCF Junior Grand Prix**

**Leaders from Missouri**

(Top 5)

<u>Name</u>	<u>JGP Points</u>	<u>Events</u>
Margaret Hua	3156	6
Jack Weil	3150	1
Harry Hawkins	3018	1
Kevin Cao	2768	7
Jonathan Palotto	2750	1

## 2011 MCA Player of the Year Results:

The Missouri Chess Association Player of the Year program is designed to encourage and promote over the board chess play across the state.

### How tournaments qualify:

Any weekend tournament in Missouri which is regular rated, and requires MCA membership earns points towards the Player of the Year.

### How Players get points:

1. Players earn two points for playing in any qualifying tournament.
2. Players receive one point for each win, and .5 pt for each draw in qualifying tournaments.

The top three finishers in the Player of the Year are recognized with a plaque at the Missouri Open.

The 1st place Winner receives a place in the following year's Invitational Championship.

1. Trimble, Selden	<b>55</b>
t-2. Thompson, William	<b>50.5</b>
t-2. Garnier, Joseph A	<b>50.5</b>
4. Larson, Matthew	<b>49</b>
5. Bange, Steven D	<b>48.5</b>
6. Luther, Ronald G	<b>42</b>
t-7. Manthe, Barry Paul	<b>41.5</b>
t-7. West, Ken P	<b>41.5</b>
t-7. Zhou, Jason	<b>41.5</b>
10. Frank, Joshua	<b>39</b>
11. Berry, Clark Z	<b>38.5</b>
12. Finegold, Benjamin	<b>37.5</b>
13. Phan, Nathan Tu	<b>34.5</b>
14. Tong, William M	<b>34</b>
15. Ziolkowski, Marek W	<b>32.5</b>
t-16. Howe, Bob	<b>31</b>
t-16. Nesham, William	<b>31</b>
t-18. Bharadwaj, Vishal	<b>30.5</b>
t-18. Eckert, Doug	<b>30.5</b>
t-18. Holliman, Bob	<b>30.5</b>

### MCA BOARD OF DIRECTORS & OFFICERS 2010-2011

**Edward C. Baur: (Membership Chair)** 7138 Lindenwood, St. Louis, MO 63109.  
314-645-2897. <ecbaur@gmail.com>

**Tim Nesham:** 290 Grand Drive, O'Fallon, MO 63366.  
636-697-8816 <tim.nesham@gmail.com>

**Bob Howe: (Secretary)** 311 E. Walnut, Pacific, MO 63069  
636-234-7928. <bdhowe@yahoo.com>

**Ron Luther:** 5205 Countryside Ln, Blue Springs, MO 64015 816-769-9576.  
<ronluther@sbcglobal.net>

**Bruce Cantwell: (Vice President)** 711 S. Prairie, Apt 3. Liberty, MO 64068  
<fordmankc@yahoo.com>

**John Sutton:** 3608 Randall Drive, Independence, MO 64055.  
816-478-3946. jsutton@indep.k12.mo.us

**Timothy V. Campbell:** 6104 E. Sharon Lane, Columbia, MO 65202.  
573-696-0082. <TRJCamp@aol.com>

**Thomas R. Rehmeier (President, Webmaster):** 5217 Denice Street, Jefferson City, MO 65109.  
573-291-0852. <T.Rehmeier@yahoo.com>

**Martin Stahl:** 2609 New Hampshire, Joplin MO 64804 417-483-1554, martin.stahl@gmail.com



# Missouri State Champions



**Missouri State Champion**  
Grand Master Benjamin Finegold



**Missouri Open Champion**  
IM Goran Vojinovic



**Amateur Champion**  
David Meliti & Selden Trimble



**Denker Champion**  
Jialin Ding

## 2010 Class Champions



**Quick Champion**  
IM Goran Vojinovic

<b>Master —</b>	Abhishek Mallela
<b>Expert</b>	
<b>Class A</b>	Alex Esposito
<b>Class B</b>	William Collin, Bill Thompson
<b>Class C</b>	Tim Campbell
<b>Class D</b>	Daniel Hawley
<b>Class E</b>	Rohit Rao
<b>Novice</b>	David Braton



**All Girls Champion**  
Margaret Hua

For a complete history of Missouri Champions, visit [www.mochess.org](http://www.mochess.org) & click the Champions Link.

# Missouri Chess Hall of Fame



*Mr. James H. Davies  
Inducted: 2000*



*Mr. Donald Oswald  
Inducted: 2001*



*Mr. Robert M. Jacobs  
Inducted: 2002*



*Mr. Robert H. Steinmeyer  
Inducted: 2006*



*Mr. Michael A. Brooks  
Inducted: 2003*

*Chess, like any creative activity,  
can exist only through the combined  
efforts of those who have creative  
talent, and those who have the  
ability to organize their creative  
work.*



*Mr. William H. Wright  
Inducted: 2009*



*Mr. John V. Ragan  
Inducted: 2008*

*-Mikhail Botvinnik*



*Mr. Selden Trimble  
Inducted: 2010*

---

**Missouri Chess Association**  
**Bulletin Editor**  
311 E. Walnut  
Pacific, MO 63069