



MISSOURI CHESS BULLETIN

www.mochess.org



**GM KAIDANOV
IN KANSAS CITY**

Volume 33 Number One—Winter 2006 Issue

Serving Missouri Chess Since 1973

2005-2006 MCA Officers and Board of Directors

Region 1 (St. Louis)

Treasurer William H. Wright 449 W. Jefferson Ave., Apt. B St. Louis, MO 63122

President Ed Baur 7138 Lindenwood St. Louis, MO 63109

Aaron Dubin 702 Stifel Ridge Court Town and Country, MO 63017

Region 2 (Kansas City)

Secretary Ken Fee, Jr. 1537 Baker Liberty, MO 64068

Bob Holliman P.O. Box 1871 Independence, MO 64055-0871

Wayne Bartlett P.O. Box 417 Oak Grove, MO 64075

Region 3 (Rest of State)

Membership Chair Charles Ward 2400 Cimarron Drive Columbia, MO 65203

Milton Garber 3131 Williamsburg Way Jefferson City, MO 65109

Vice President Selden Trimble 11830 State Route BB Rolla, MO 65401

Membership and Subscriptions

The Missouri Chess Bulletin is the official quarterly publication of the Missouri Chess Association. MCA membership includes a subscription to the MCB. E-members receive their MCB via the internet (no printed copy). Include e-mail address with dues.

Annual Membership Rates

Regular	\$10
E-Member	\$5
Scholastic	\$7
Affiliate	\$9
Patron	\$25

**Please send address changes and memberships to
Charles Ward, 2400 Cimarron Dr., Columbia, MO 65203**

Layout and design by Ken Fee and Bryon McLaughlin

Table of Contents

Missouri Champions and Ratings	Page 4
From the Editor	Page 5
Board of Directors Minutes	Page 6
GM Kaidanov in Kansas City	Pages 7-8
Missouri K-12 State Championship	Pages 9-10
Chess Strategy by Bob Holliman	Pages 11-13
From the Pawn Shop by Loal Davis	Pages 14-19
When Humans Used to Play Postal Chess	Pages 20-21
Games from Missouri Players	Pages 22-25
Missouri Chess Clubs	Page 26
Missouri Tournament Life	Page 27
2006 Missouri Open in Kansas City	Page 28



"The pin is mightier than the sword." - Reinfeld



Missouri Top 50 Rated Players

1	MICHAEL A BROOKS	2449
2	CHARLES LAWTON	2363
3	KENNETH E JONES	2315
4	THOMAS G GOSSELL	2213
5	JAMES S ELLIS	2200
6	RONALD G LUTHER	2200
7	LOAL W DAVIS	2200
8	KENNETH P. THOMAS	2181
9	ALAN J ERLEBACHER	2162
10	BOB HOLLIMAN	2159
11	ANDREW J WITTE	2152
12	FRANK A CHRESSANTHIS	2139
13	JAMES F MCLAUGHLIN	2137
14	JAMES R VOELKER	2136
15	ROBERT MERTON JACOBS	2114
16	ROBERT L ZWEIBEL	2093
17	TODD A FLOWERDAY	2090
18	ROY D WOLFSKILL	2090
19	GARY M WHITE	2085
20	ZEBEDEE FORTMAN III	2075
21	AARON S DUBIN	2059
22	ROBERT F SUTTER JR	2058
23	SCOTT R MOORE	2055
24	WALDO ODAK	2050
25	KING P CHRISTIAN	2045
26	DANIEL R HUFF	2044
27	JAMES S BAUMLIN	2038
28	RANDY W GIMINEZ	2034
29	PETER E MOSCATELLI	2026
30	JEREMY M VOLKMANN	2022
31	PAUL W CORNELISON	2017
32	RILEY M SHEFFIELD	2001
33	JAMES A DAVIES	2000
34	KEVIN DALE JOHNSON	2000
35	FREDRICK SADOOGI	1998
36	THURMAN L NEWBILL	1995
37	DAVID A SIMONS	1980
38	RICHARD T HARPER	1978
39	STEPHEN E RANDOLL	1967
40	PANAGIOTIS MASSOUROS	1961
41	TONY SONG	1958
42	EDWARD T KUEFLER JR	1954
43	MICHAEL A BENOIT	1950
44	STEVEN D BANGE	1936
45	JACK B WINTERS	1925
46	GARY FREEMAN	1920
47	DANIEL A JUENGEL	1917
48	CARL M BENDER	1915
49	KEVIN GUO	1913
50	SERDAR AYKENT	1907



Missouri Champions

2005 MO Open Champion Bob Holliman



2005 MO Quick Champion Ron Luther

2005 MO Class Champions

Master/Expert -- Zeb Fortman III

Class A -- (anonymous)

Class B -- Nathan Swinger

Class C -- Barry Walker

Class D -- Cody Ruggles

Class E -- Chris Ivy

Class F -- Arjun Khurana

Unrated -- Jared Bray



2005 MO HS State Champion Joseph Garnier

2005 MO HS Team Champion Rockhurst - Kansas City

From the Editor by Ken Fee

E-Mail Comments and Games in ChessBase to KFEED@kc.rr.com

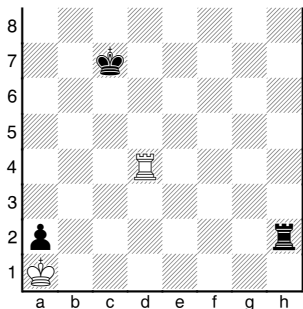
The Winter 2006 Issue is my first issue as MCB editor.



Here is some personal information for those who do not know me. I am married to Yvonne with one seventeen-month old daughter, Mallory, and another daughter, Kendra, due in May. I run The Chess Club in a shopping mall and teach English at Oak Park High School both in Kansas City. Our club website is www.powerpawn.net. Finally, I have been involved in chess since 1969 either as a scholastic player, chess coach, tournament director, or player.

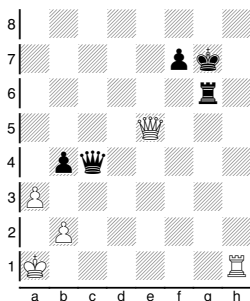
My goal as editor in the upcoming issues is to promote Missouri chess players, clubs and events. While I may add a few interesting items from National and International chess news, the plan is to focus on Missouri chess! Previous editors have cut and paste news items from the internet which had nothing to do with Missouri chess. Why? The answer is that they were lacking local material. So my plan is to make the bulletin a team effort. The MCB should contain games, tournament reports, and articles from the three regions of Missouri, and I will strive to work toward that goal in future issues. Future issues should contain one club report per issue, and numerous articles from top Missouri players. There is even a rumor that IM Brooks may contribute an annotated game to the Spring MCB. But it is only a rumor for now!

Now, to chess! We all have had games in which we were losing and planned to resign on the next move. Some of us have resigned; others has fought on ;others have used the stalemate trick on our opponents.



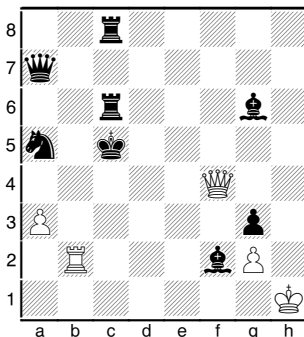
The above position occurred in a Kansas City

scholastic tournament! The general idea is to place your King into a position where it cannot move. Sorry, I do not remember the names of the players. 1.Rc4+ Kb6 2.Rc6+ Kxc6 Draw! Interesting enough, the White rook can check the King around the board, and if the Black King takes the rook, the game is drawn! I have even had similar positions on the ICC in which my opponent has messaged me after the game over and over, "Oh my God! What a lucky B_st_rd."



The stalemate trick even occurs on the International level. The above diagram is from the recent 2005 World Cup in Russia from the game Korneev-Miroshnichenko. In the above position, Black resigned thinking, 62. ... Rf6 63. Rg1+ winning the rook! Here is what he missed! 62...Rf6 63.Rg1+ Kh7 64.Qxf6 Qa2+ 65.Kxa2 b3+ 66.Kxb3 Stalemate. White could have tried 64.Qh5+ but there is no way to win!

Test time! How does White draw the following position using the Stalemate trick? Answer in the next issue!



Have a great 2006 in chess and life!

Missouri Chess Association Board of Directors Meeting

The Minutes for October 2, 2005

The meeting was convened at 2:00PM at the UMC Memorial Union in Columbia, Missouri.

Members Present: Ed Baur, Bill Wright, Charlie Ward, Milton Garber, Ken Fee, Bob Holliman, Wayne Bartlett, Selden Trimble, and Aaron Dubin.

The Minutes of July 17th, 2005 board meeting were reviewed and approved unanimously with one amendment.

Amendment: The treasurer should present an annual itemized budget to the board. Wayne Bartlett pointed out that the board should make a budget also.

The winter board meeting will be on January 8th at Charlie Ward's home at 2PM. The backup meeting date is January 22nd if the 8th presents bad weather.

Treasurer Report: Balance of \$3011.79 as of August 31st. We owe Ed Baur for printing of the last bulletin. The report was approved unanimously.

Members Report: The Missouri Open brought in twenty-two new/renewed members. Charlie Ward reported that there are currently 231 members. The report was approved unanimously.

Election of Officers: Ed Baur was elected as MCA President by a unanimous vote. Selden Trimble was elected as MCA Vice-President by a unanimous vote. Bill Wright was elected as MCA Treasurer by unanimous vote. Ken Fee was elected as MCA Secretary and the MCA Bulletin Editor by unanimous vote.

Membership Fees: The board voted unanimously to not change the fees.

Old Business:

Tournament Schedule:

The Missouri Open is scheduled at The Chess Club in Kansas City on September 16th-17th, 2006.

The Chess Club is donating the space which would cost \$500 to the MCA. Hotel information will be provided in the flyer. The MCA will give The Chess Club a donation receipt.

The Kansas City Open will be held February 18th-20th.

The St. Louis Open in April sometime -will try to avoid The Kentucky Derby.

New Year Open/Kansas City Masters will be held on January 14th, 15th, and 16th.

Missouri Class Championships will be held June 10th-11th, 2006 in Columbia, Missouri.



Missouri Open Information

The board discussed the idea of having two sections in order to avoid first play ties.

An eight to sixteen player Invitational was suggested.

Ken Fee and Wayne Bartlett will present the board with the tournament details at the next board meeting.

Meeting Frequency: The board voted unanimously to meet three times a year. One idea was to skip the summer meeting. At the January meeting, the board will decide the yearly meeting dates.

Bill Wright pointed out that the VA hospitals are not interested in free chess sets because of lack of interest.

New Business:

Ed Baur will telephone the winners of the Missouri Open and find one player to represent Missouri in the Governor's Cup since Bob Holliman respectfully declined the invitation.

The board discussed chess as a certified sport by MSHAA.

The MCA Bulletin dates were discussed. The publication schedule is January, April, July, and October.

The board suggested that the Minutes from the annual meeting be put in the MCA bulletin.

GM Kaidanov in Kansas City

GM Gregory Kaidanov, rated 2722, the second highest USCF rated player in the United States, visited The Chess Club on Saturday, November 19th.



Four-Player 5 0 Blitz Simultaneous Exhibition

He lectured for three hours on the psychological aspects of playing chess, gave five four-player blitz simuls, played blindfold blitz, and performed a 20-board simultaneous exhibition. Kaidanov stressed that the maturing player must study his own games, looking closely for inconsistencies or flaws in thinking.

The 5 0 blindfold blitz games were interesting. GM Kaidanov sat in a chair with his back to the board and his hand on the clock. He would call out his moves and push his clock. In turn, Ken Fee made Kaidanov's moves and told the GM his opponent's moves. Gregory won all five of his blitz blindfold games.



Kaidanov pauses for a picture with a young player.



The Blindfold Blitz game versus Expert Tim Steiner

In the simul, Kaidanov won 18 games and drew two games. Expert Tim Steiner and Darius Masuhud picked up the draws. The Chess Club would like to thank Ed and Marie Bapple for hosting GM Kaidanov at their home during his visit to Kansas City.



Greg Kaidanov poses with his luncheon host, Ed Bapple.



The 20 Board Simultaneous Exhibition

K-12 State Championship

The Missouri K-12 State Championship was held in Kansas City at the beautiful Holiday Inn in Columbia on November 5th. There were a record 204 players from all areas of the state. The tournament was both an individual and team event.



(Above center) Sarah Sampei from Pembroke Hill School focuses on her next move!

The idea of a grade tournament is to allow scholastics to play opponents from the same grade. The two exceptions were grades 12 and Kindergarten. The tournament format was five rounds with the time control of 30 minutes per player.

The following are 2005 Individual Missouri Grade Champions:

- Ben Derks - Kindergarten
- Paul Gill - 1st Grade
- Mikey Moyer – 2nd Grade
- Steven Ketchmark – 3rd Grade
- Arjun Nandy- 4th Grade
- Hughes Lee – 5th Grade
- Jacob Hamacher – 6th Grade
- Caleb Brown –7th Grade
- Peter Harris – 8th Grade
- Luke Ruggles – 9th Grade
- Thomas Rehmeier – 10th Grade
- Jerry Sun – 11th Grade
- Cody Ruggles –12th Grade



The following are the 2005 Team Missouri Grade Champions:

- Barstow School – 2nd Grade Team Champion
- Barstow School – 3rd Grade Team Champion
- Pembroke Hill School – 4th Grade Team Champion
- Kennard – 5th Grade Team Champion
- Parkway Central Middle School – 6th Grade Team Champion
- Ladue Middle School –7th Grade Team Champion
- Pioneer Ridge Middle School –8th Grade Team Champion
- William Chrisman High School –9th Grade Team Champion
- Ava High School – 10th Grade Team Champion
- Truman High School –12th Grade Team Champion



(Above) Tournament Director Tim Steiner at work.



Webb Miller answering another difficult chess question from Jack.

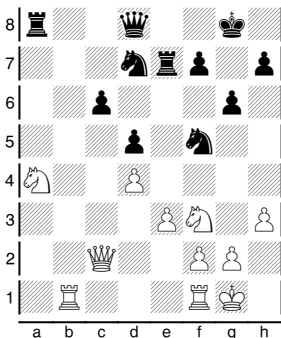
Chess Strategy with Life Master Bob Holliman

“Sacrificing the Exchange”

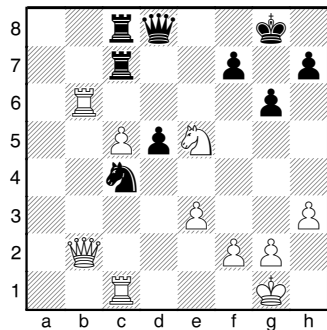
E-Mail Comments and Games to Bob in ChessBase to chessbob@ispwest.com

Onischuk,AI (2640) - Bruzon,L (2677)
[D36] World Team ISR (8), 09.11.2005

This game and the following both contain an exchange sacrifice; its a theme I like due to the imbalance created in the position. I don't know much about the winner of this game, Alexander Onischuk and scarcely can say much more about the loser. However, there is no need to pity GM Lazaro Bruzon. He won the recent Continental Championship with a very solid 8.5/11, had a respectable result at the recent team championship in Israel and, at the old age of 16 or 17, has a bright future ahead of himself. Did I mention he is also Cuba's number one player? He just happened to end up on the wrong side of this nice strategic encounter. 1.d4 d5 2.c4 c6 3.Nf3 Nf6 4.Nc3 e6 5.Bg5 Nbd7 6.cxd5 exd5 7.e3 Be7 8.Qc2 0-0 9.Bd3 Re8 10.0-0 Nf8 11.h3 g6 12.Rab1 Ne6 13.Bh4 Ng7 14.b4 a6 15.a4 Bf5 16.b5 axb5 17.axb5 Nd7 18.Bxe7 Rxe7 19.Bxf5 Nxf5 20.bxc6 bxc6 21.Na4 Diagram



White has traded 2 sets of minor pieces, the bishops, and obtained the better pawn structure. Note the backward pawn on "c6" that will need defending. Further the knight on f5 looks a bit out of place. 21...Rc8 Here Nimzovitch would cry "blockade, always blockade." Others would say the best place for one of your pieces is on a square directly in front of a weak pawn 22.Nc5 Nd6 23.Nxd7 Rxd7 24.Ne5 Rdc7 25.Rfc1 Qf6 26.Rb6 c5 27.Qb2 Qd8 [27...c4 The computer likes white and I can't say I blame "it." By playing the pawn to c4 black would obtain a tad bit of space on the Q-side. Instead the trade leaves him with a weak "d" pawn.] 28.dxc5 Nc4 Diagram



29.Rxc4! [29.Nxc4 dxc4 30.Rxc4 Rxc5 31.Rxc5 Rxc5 32.Rb8 Rc8 and black could look forward to strong drawing chances in this 4v3 pawn ending. Onischuck simply looks at the weak dark squares around the black king and says, " Hey, I read this article on chessmasterbob.com or power-pawn.net and this exchange sacrifice is just too good to pass up." (Ok, I made that

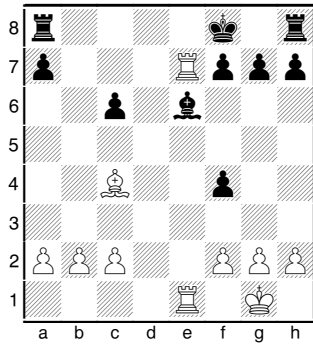
up but it could happen!)] 29...dxc4
 30.Ng4!, Rc6 31.Nh6+ Kf8 32.Qh8+ Ke7
 33.Qe5+ Kf8 34.Qh8+ Ke7 35.Qg7 Qd1+
 36.Kh2 Rxb6 37.Qxf7+ Kd8 38.cxb6
 Qd6+ 39.f4 Qxb6 40.Qd5+ Ke7 41.Ng8+
 Kf8 42.Nh6 See how white makes every
 move count? The threat is mate and yet to
 defend will cost black more material...

42...Rc7 43.Qg8+ Ke7 44.Qxh7+ Kd8
 45.Qg8+ Kd7 46.Ng4 Kc6 [46...c3
 47.Ne5+ Kd6 48.Qd8+ Kc5 49.Nd7+ Rxd7
 50.Qxd7 Kc4 51.Qa4+ Kd3 52.Qd1+ Ke4
 53.Qc2+ Kxe3 54.Qxc3+ Kxf4 55.h4]
 47.Qxc4+ Kb7 48.Qe4+ Ka7 49.Ne5 Rc3
 50.Qd4 Rb3 [50...Rxe3 51.Qxb6+ Kxb6
 52.Nc4+] 51.Nxg6 Rxe3 52.Qxb6+ Kxb6
 53.h4 1-0

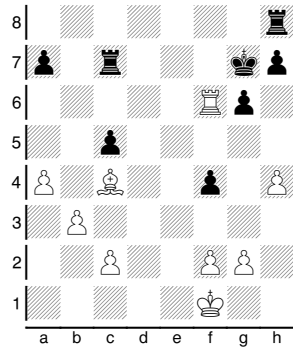


Wittmann (2376) - Radziejewicz,(2453)
 [C07] First Saturday GM November 2005
 Budapest HUN (2), 07.11.2005

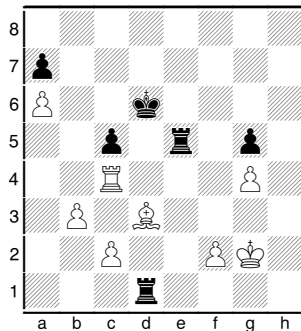
The player with white, Dr. Walter Wittman, is an IM if memory serves. I've played him once in ICCF competition years ago. His reputation is that of one who prepares well. 1.e4 e6 2.d4 d5
 3.Nd2 c5 4.Ngf3 cxd4 5.exd5 Qxd5
 6.Bc4 Qd6 7.0-0 Nf6 8.Re1 Nc6 9.Ne4
 Nxe4 10.Rxe4 Be7 11.Nxd4 e5 12.Bf4
 exf4 13.Nxc6 Qxd1+ 14.Rxd1 bxc6
 15.Rde1 Kf8 16.Rxe7 Be6 Diagram



17.R1xe6 fxe6 18.Rxe6 Rd8 19.Kf1 c5
 20.b3 Rc8 21.h4 g6 22.a4 Rc7 23.Rf6+
 Kg7 Diagram



24.Rxf4 Rd8 25.g3 Re7 26.Rf3 Rd1+
 27.Kg2 Rd2 28.Rc3 Re8 29.Kf1 Rd1+
 30.Kg2 Rd2 31.Kf1 h6 32.Bb5 Re5
 33.Bd3 g5 34.hxg5 hxg5 35.a5 Kf6 36.g4
 Ke6 37.a6 Rd1+ 38.Kg2 Kd6 39.Rc4
 Diagram



See how the bishop simply waits for an opportunity while controlling the squares.

Black was forced to allow a4-5-639...Ra1

40.f4 Rd5 41.Re4 gxf4 42.Rxf4 Rd4

43.Rxd4+ cxd4 44.g5 Ra5 45.g6 Rg5+

46.Kf3 Ke5 47.b4 Would you have the courage to play into this kind of position?

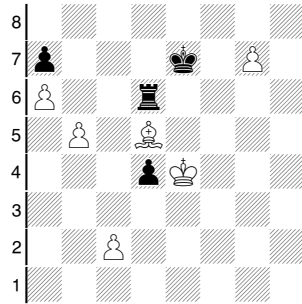
The black king must give up room to the white king. The bishop supports the a & g pawns and the king will walk in or the b pawn will be advanced to "b6" and force the queening of one of the white passed pawns.

47...Rh5 48.b5 Rh8 49.Bc4 Kf6

50.Bd5 Rb8 51.Bb7 Rd8 52.Ke4 Rd6

53.Bd5 Ke7 [53...Kxg6 54.Kxd4 Kf6
55.Kc5 Rd8 56.b6 Rc8+ 57.Bc6 axb6+
58.Kxb6 Ke6 59.a7] 54.g7 1-0

Diagram



World Champion Profile

St Louis Stop Helps Wilhelm Steinitz Win!



Wilhelm Steinitz (at the right side of the table), the first official World Chess Champion, with members of the Philadelphia Chess Club in 1882.

The first official World Chess Championship match was held in the United States in 1886. It pitted Wilhelm Steinitz against Johannes Zukertort, and was held in 3 cities (New York, St. Louis, and New Orleans). Steinitz was behind four games to one in the first stage, but came roaring back in St. Louis where he equalized the score. In the match's final stage in New Orleans, Steinitz edged Zukertort to claim the championship. For the win, Steinitz was awarded \$2,000.

Steinitz won the crown at age 49, but had been considered by many as the unofficial world champion for the prior 20 years. After learning the game at age 12, he became a significant chess thinker and early theorist. Before Steinitz, players favored brilliant sacrifices and grandiose tricks, especially in tactical opening variations. Steinitz developed sophisticated theories about chess strategy for the opening, middle, and end game, especially stressing the importance of position and capitalizing on opponent mistakes. He was also one of the game's first professional players. Born lame, Steinitz was barely five feet tall as an adult.

From the Pawn Shop by Master Loal Davis

E-Mail Comments and Games to Loal in ChessBase to loaldavis@yahoo.com

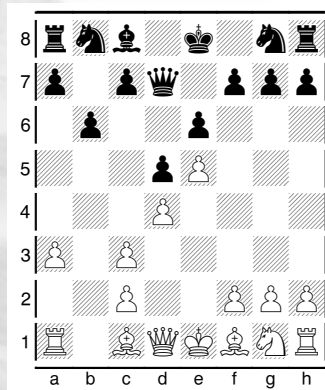


Davis (2211) - IM Kopec (2383) [C16]
Foxwoods 2005 (4)

Dr. Danny Kopec comes off very differently in person than the persona I heard on ICC's Internet Chess Radio. On the ICC he seemed rather patronizing and simplistic; in hindsight, he may have just gotten off from teaching his younger students and/or didn't realize who his audience was. Anyway, I met him in the 4th round of the Foxwoods Tournament in Connecticut 2005. He was a delight to talk to and has a wide range of interests. Nowadays he is primarily focused on teaching chess and runs a large chess camp during the summer. He was very gracious before, during, and after this game, repeatedly complimenting me on my "direct" attack.

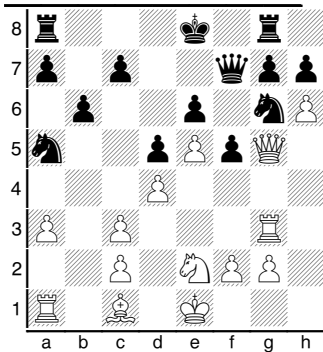
I bought his most recent book, "Winning The Won Game" and got him to autograph it. He signed it "IM Dr. Danny Kopec To Loal W. Davis - It was a pleasure meeting

you - even losing ! - Congrats! IM Danny Kopec". There are not many who would autograph in that manner. Dr. Kopec felt after this game that he didn't make any overt blunders, just several minor slips that eventually added up to a loss. I felt during the game that he was primarily focused on pawn structures; this tended to distract him from the dangers in the position. I have labeled three points in this game (Number 1, Number 2, Number 3) where I think this took place. In retrospect, I'm not sure any one of them is really a mistake; I draw attention to them, because they have to do with a "good" Knight versus a "bad" Bishop and Pawns. Alas there were other pieces on the board. **1.e4 e6 2.d4 d5 3.Nc3 Bb4 4.e5 Qd7** Petrosian was very fond of this variation of the Winawer. **5.a3 Bxc3+ 6.bxc3 b6** Diagram



Vying for the exchange of white Bishops; theoretically Black's "bad" Bishop for White's "good" one. **7.Qg4 f5 8.Qg3 Ba6 9.Bxa6 Nxa6 10.Ne2 Nb8** Number 1. Restraint/blockade of the doubled Pawns -

Nc6/Na5/Nc4. But - it all takes time. [10...c5 allows 11.a4 and White may activate his Bishop via a3, dissolve his 'a' Pawn, and/ or render castling Queenside problematic for Black.] **11.h4 Nc6 12.Qg5** A minor irritant to castling Queenside coupled with a Rook lift to g3. **12...Qf7 13.Rh3 Nge7 14.Rg3 Rg8 15.h5 Na5** Number 2. [I thought 15...0-0-0 may have been better. White still continues with 16.h6 Even so, Kopec was hating Black's position in the postmortem and made a promise to himself never to play this variation again. I hardly think this game is the "catch all and end all" of the line, but Danny just didn't like the style of the game and said over and over, "It just takes too much time; it's too slow."] **16.h6 Ng6** Diagram



Black was attempting to avoid h6/g6 (Pawns locked on the Kingside) which would allow White "all the time in the world" to wiggle into f6 with Queen/ Bishop and into g5 with the Knight; one of those passive positions where you just watch as your opponent comes at you - not fun to play. **17.hxg7 c5** The g7 Pawn is temporarily immune from capture. Taking with

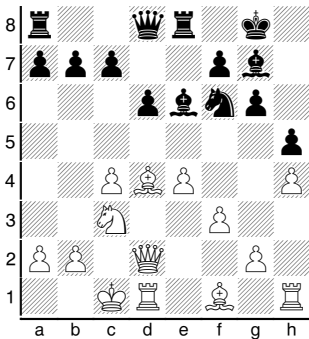
either Queen or Rook allows Nf4. The g file pin allows the Knight smooth access to h5/f6 and it's "positional lights out". **18.Nf4 Nxf4 19.Bxf4 cxd4** Number 3. [The better 19...Rc8 20.Qh6 cxd4 21.cxd4 Rxc2 22.Rc1 Rxc1+ 23.Bxc1 Nc6 24.Bb2 results in a plus for White as well.] **20.Ke2!** Losing no time. [He was expecting 20.cxd4 which as it turns out is still better for White.] **20...Rc8 21.Rh1 Nc6 22.Rh6** Striking at his soft underbelly; f6 and e6 are vital points. **22...Nd8 23.Rf6 Qe7** He must keep the Queen's eye on f8, else Rf8+ will open the g file and White crashes through. **24.Qh5+ Kd7 25.Qxh7 Nf7** [25...Nc6 allows 26.Rf8 (or 26.Qg6 Nd8 returns to the game.) 26...Rcx8 (26...Rgxf8 27.gxf8N+ Ke8 (27...Kd8 28.Bg5) 28.Rg7) 27.gxf8N+ Rxf8 28.Rg7] **26.Qg6 Nd8 27.Bh6 Qxa3 28.Rf8 Qa6+ 29.Rd3 Nc6 30.Qf7+ Ne7 31.Bg5 1-0**



Loal Davis (2208) - Vladimir Mezentsev (2498) [E85]

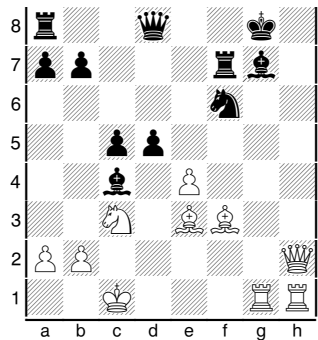
Reno Western States Open: I have ALL of my students eventually learn how to checkmate with King, Bishop, & Knight versus a King. Even IF it is never played in your "real" chess, the lessons learned in developing a harmony between these pieces transfers to other

areas of the game. I have had students say, "Oh - Why do I have to learn that? I'll never have to play it." Be that as it MAY, my experience has been very different. I have had to play this ending in 7 or 8 tournament games - including this one. **1.d4 Nf6 2.c4 g6 3.Nc3 Bg7 4.e4 0-0 5.Be3 d6 6.f3** The Saemisch variation of the King's Indian. **6...e5 7.Nge2 Nc6 8.Qd2 exd4** Attempting to utilize the long diagonal and the 'e' file. **9.Nxd4 Re8 10.0-0-0 Nxd4 11.Bxd4 Be6 12.h4 h5** Diagram



Allowing White to play h5, with or without a Pawn sacrifice, would facilitate open lines to the Black King. **13.Be2 c6 14.g4!?** This is not without risk, but a strong motif when Kings are castled on opposite sides of the board is to open lines to the opposing King. **14...hxg4 15.h5** [15.fxg4 was certainly simpler and still grants White a nice attack. For Black, winning the g Pawn allows an exchange of the g7 Bishop; should he first play c5, then d6 and c5 fall.] **15...gxf3 16.Bxf3 Bxc4 17.Rdg1** White's moves need to be properly timed so as to open lines and fuel his attack. Simply opening lines for the sake of opening lines

(for instance hg/ fg here) would allow Black's pieces to fill the gap and offer greater resistance; in this case by allowing his Bishop to retire to f7. **17...c5 18.Be3 d5** I'm not sure how well this was thought out. The natural reaction to an attack on the wings is a thrust in the center; but it's not all that simple. White is well centered; this becomes clear in the next few moves. **19.hxg6 Re7** [With 19...d4 20.Bh6 Black is torn apart.] **20.gxf7+ Rxf7 21.Qh2** Diagram



The "grand pause" here led me to believe this move (mate in one threat) was overlooked. **21...Kf8 22.Bxc5+ Ke8 23.Qe5+ Kd7 24.exd5** Black has been effectively smoked out of his shelter and White dominates the center. This combined with a rather passive Rook on a8 should net the point. But Black's position is surprisingly resilient. **24...Qg8 25.Qd6+ Kc8 26.Bd4 Nd7 27.Bg4 Qf8 28.Qxf8+ Bxf8 29.Be6 Re7 30.Rh8 Rxe6** Offering some practical chances. **31.dxe6 Bxe6 32.Re1! Bf7** This necessary protection of the e8 check allows White to "line 'em up" on the f file.

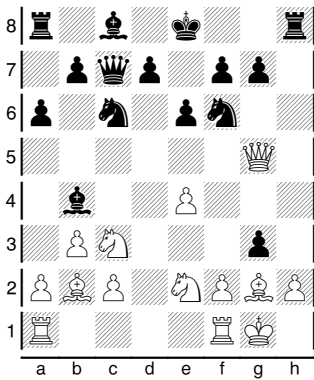
33.Rf1 Be8 34.Rxf8 Nxf8 35.Rxf8 Kc7
 Time pressure was affecting both players here; the following scramble/shuffle/doing nothing consciousness was played simply to get past move 40. 36.Kd2 a6 37.Ke3 Rd8 38.Rf2 Bc6 39.Rf7+ Kd6 40.Rf6+ Ke7 41.Rf2 Rg8 OK - time scramble over; back to the ending. 42.Kd3 Rg4 43.a4 Rg2 44.Kc4 Kd6 45.Bc5+ Ke6 46.Rxg2 Bxg2 47.Bf8 Angling for Kc5. 47...b6 48.Kd4 Kd7 49.Nd5 Kc6 50.Nb4+ Kb7 51.Be7 A counter to Black's idea of playing his Bishop to the f1/a6 diagonal hitting the a4 Pawn. 51...Bf3 52.Bd8 Bd1 [52...a5 53.Nd5 prompts the exchange of Black's Bishop.] 53.a5 bxa5 54.Bxa5 Be2 55.Kc5 Bf1 56.Nd5 Be2 57.Ne3 Bf3 58.Nc4 Bg2 59.Nd6+ Ka7 60.Bb6+ Kb8 61.Kb4 Bf1 62.Ne4 [Inaccurate is 62.Ka5 Bd3 and White's Knight cannot easily get to c5 to pile up on the a6 Pawn.] 62...Kb7 63.Ka5 Kc6 64.Nc5 Kd5 65.Nxa6 Be2 66.Nc7+ Kc6 67.b4 Bf1 68.b5+ Bxb5 A last attempt to draw. Black is hoping that White doesn't know how to mate with King/Bishop/Knight. 69.Nxb5 Kd5 70.Kb4 The fifty-move count begins here. 70...Kc6 71.Bc5 Kd5 72.Nc3+ Ke6 73.Kc4 Ke5 74.Be3 Kd6 75.Bf4+ Kc6 76.Nd5 Kb7 77.Kb5 Ka7 78.Kc6 Ka8 Black attempts to lure stalemates in the "wrong" corner. Mate is forced only in the corner that is the same color as the Bishop; in this case Black. 79.Nb6+ From here on in, I was blitzing off my moves. I know this in my sleep, and have executed it blindfold many times. My opponent apparently knew some of the ideas and chose to play on

until it was obvious to him that I knew the ending. 79...Ka7 80.Be5 Ka6 81.Bb8 I have a "restricting triangle" method that I teach students as it is very easy to visualize, but this is more efficient; see Tarrasch "The Game Of Chess" or Capablanca "Chess Fundamentals". 81...Ka5 82.Nd5 Ka4 83.Kc5 Kb3 84.Nb4 Kc3 It only looks as if Black is getting away. 85.Bf4 This "puts the lid on". Here my opponent resigned. The following moves would have been 85...Kb3 86.Be5 Ka4 87.Kc4 Ka5 88.Bc7+ Ka4 89.Nd3 Ka3 90.Bb6 Ka4 91.Nb2+ Ka3 92.Kc3 Ka2 93.Kc2 Ka3 94.Bc5+ Ka2 95.Nd3 Ka1 96.Bb4 Ka2 97.Nc1+ Ka1 98.Bc3# which would have effected the mate in 29 moves. 1-0

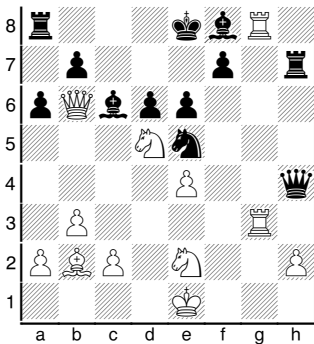


(4) Loal Davis (2211) - IM Jay Bonin (2379) [B43]
 Foxwoods 2005 (6)

1.e4 c5 2.Nf3 a6 3.Nc3 e6 4.d4 cxd4 5.Nxd4 Qc7 6.g3 Bb4 7.Nde2 Nc6 8.Bg2 Nf6 9.0-0 h6 10.b3 Ne5 11.Bb2 h5 12.Qd4 Slowing down Black's designs on the Kingside. This doesn't really lose much time; Black has to withdraw his Bishop from b4 or his Knight from e5 to hit the Queen. 12...Nc6 13.Qd2 h4 14.Qg5 hxg3 Diagram (Refer to next page)



Expecting me to "react" with my recapture. **15.Qxg7** Some may say this gets messy; I prefer the word "rich". **15...gxf2+ 16.Kxf2 Qb6+ 17.Ke1 Rg8 18.Qxf6 Rxg2 19.Qh8+** [19.Qxf7+ is obvious, but I thought I could withdraw his Rook from g2.] **19...Bf8 20.Qf6 Rg7 21.Rd1 Rh7 22.Rd3 Be7 23.Qf4 d6 24.Rg1 Ne5 25.Rg8+ Bf8 [25...Kd7 26.Qxe5] 26.Rdg3?** [With 26.Qxe5 dxe5 27.Ba3 the game is over. I've given this position to virtually all of my students - and not one failed to see taking the Knight on e5 - embarrassing.] **26...Bd7 27.Qf6?** [27.Rxf8+ Kxf8 28.Qxe5 again wins. A rather poor comment on the tactical awareness of both players.] **27...Qd8 28.Qf2 Qh4 29Qb6 Bc6 30.Nd5!** Diagram



"Assuming" the aforementioned capture of the Knight on e5 was "not" possible, this may well have turned out to be one of my better games - because of this move. I spent a lot of time on it and correctly (I'm pretty sure) made the plunge. **30...Nf3+ 31.Kd1 exd5 32.exd5 Bxd5 33.Qxd6?!** [33.Rxf8+ Kxf8 34.Qxd6+ Qe7 (34...Ke8 35.Rg8#) 35.Rg8+ Kxg8 36.Qxe7 I SAW this, but discarded it. Why? because I parted with two Rooks for the Queen. This may be understandable, but is totally inexcusable - at least for me excusing myself. It's akin to Black saying, "After 1. f3 e5 2. g4 I don't want to play my Queen out too early." Black's Rooks are NOT fully operational. The 'a' Rook is out of play and can't get into the game via d8 or e8; the h Rook needs to hover around g7 to prevent mate. 36...Rxh2 37.c4 and Black will have to scurry back after Qf6.] **33...Qe7 34.Qxe7+ Kxe7 35.Ba3+ Kd7 36.Bxf8 Rxh2** Problems. I did not evaluate King safety into the equation. **37.Bc5** [Black is still better after 37.Nc3 Re8 38.Kc1 Bc6] **37...Rxg8 38.Rxg8 Be4 39.Rg3 f5 40.a4 f4 41.Rg4 Kc6 42.Ba7** Desperation; I was hoping for blunders. I got them, just not enough of them in quantity or quality to change the result of the game. **42...b6?!** [With 42...Rh1+ 43.Bg1 Kd6 I would have resigned here. 44.Rxf4 Nxg1 45.Rxe4 (45.Rf1 Bf3) 45...Nf3+] **43.Nxf4 Nd4 44.Rg3 Bxc2+ 45.Ke1 Nxb3 46.Ne6 Rh7 47.Rc3+** I'm pretty sure he missed this. **47...Kb7 48.Rxc2 Re7 49.Re2 Kxa7 50.Nd4 Rxe2+ 51.Nxe2 Kb7 52.Kd1 Kc6 53.Kc2 Nc5 54.Nc3 Kd6 55.Kb2** [I can't keep the opposition balance with 55.Kd2 Ke5 56.Ke3 because 56...a5 forces White

to lose ground.] 55...Ke5 56.Ka3 Kd4 57.Ne2+ Kc4 58.Nf4? Wrong. [I need to keep the Knight close to the path of the advancing Pawns in preparation for sacrificing for the last of them leaving King and Knight versus King - draw. 58.Nc1 Nd3 59.Ne2 b5 60.axb5 axb5 61.Ka2] 58...Nd3 59.Ne6 Kc3 My knight is effectively out of the game; I can't push the black King around to make space for my own King.

60.Nc7 Nb4 61.Ne6 Nc2+ 62.Ka2 Kb4 63.Nc7 Kxa4 64.Kb2 Whoops. [64.Nxa6 Nb4+ 65.Nxb4 Kxb4 66.Kb2 b5 and Black wins.] 64...Nb4 65.Ne6 Kb5 66.Kb3 a5 67.Nd4+ Kc5 68.Ne6+ Kd5 69.Nc7+ Kc6 70.Ne6 b5 71.Nd4+ Kb6 72.Ne6 Nc6 73.Ka3 a4 74.Nf4 Ka5 75.Nd5 b4+ 76.Kb2 Nd4 77.Nf4 a3+ 78.Ka2 Ka4 79.Nd3 b3+ 80.Kb1 Kb5 0-1



More about IM Dr. Danny Kopec

Dr. Danny Kopec is an Associate Professor of Computer and Information Science at Brooklyn College, New York, USA. Kopec became an IM in 1985 and is a well-known and prolific author of chess books and chess videos.

Find out more about Danny Kopec's ideas on chess by visiting his website at:

[<www.kopecchess.com/>](http://www.kopecchess.com/)

About Winning the Won Game

All players who aspire to chess mastery need to learn the techniques for

winning a won game: that means they must better recognize the positional advantages they already have and know how to use them to get closer to victory. The examples laid out here will help them do exactly that. Each one comes from the most brilliantly played games at the Women's and Men's United States Championships in the past 20 years—games that have won a special \$2,000 prize for excellence, donated by Paul M. Albert Jr. Players at all levels will benefit from the moves presented, described, and illustrated here, all with illuminating commentary.

—From the publisher



When Humans Used to Play Postal Chess

By Life Master Ron Luther

E-Mail Comments and Games to Ron in ChessBase to kcmaster@sbcglobal.net



Ron won the 2005 Quick Chess State Championship in Columbia at the Holiday Inn on November 5th!

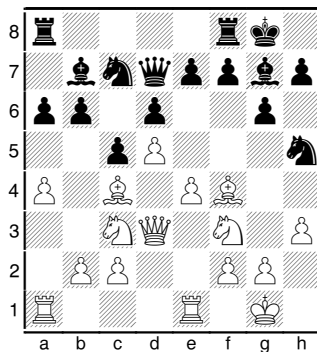
M. Guillot - Ron Luther [A43]
92 Rook 27 APCT, 1992

Before there were computers, postal chess was a fun and enjoyable way to play and learn new ideas and openings. But even the strongest players now admit (secretly) that they use computers in postal chess. The following are two of my favorite games that were played before computers took over. The first one is against M. Guillot who later became a APCT Champion and the second is against Leo Whiteside who was also an APCT Master.

Remember that there were no Fritz or Shredder to help me figure out the lines or tactics. 1.d4 g6 2.e4 Bg7



3.Nf3 d6 4.Nc3 Nf6 5.Be2 0-0 6.0-0 c5
7.d5 This move makes the game a Schmidt Benoni. Many other moves are playable including Be3, dxc5, and Bg5.
7...Na6 8.Bf4 Nc7 9.a4 a6 10.Re1 b6
11.Bc4 Bb7 12.h3 Qd7 13.Qd3 Nh5!?
Diagram



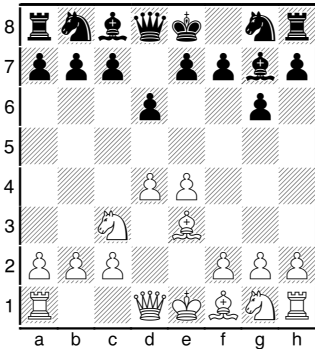
This was a new idea at the time. Later Boris Gulko would use it to win a nice game. 14.Bh2 f5 15.e5 f4 The idea is to keep the bishop out of play and work on the d5 pawn with moves like Rf5. 16.Ng5 Rf5 17.exd6 exd6 18.Ne6 Be5 19.Nxc7?? Qxc7 20.Rad1 Qd7 21.Kh1 Raf8 22.Ne4 It would seem that moves like Qf3 may of been better but white wants to try and open the game. 22...Qxa4 Black accepts the challenge! In a few moves it will become obvious why. 23.Ra1 Qd7

24.Bxa6 Bxa6 25.Rxa6 b5
26.Re1 c4 27.Qa3 c3!
This shuts off the pieces from the white king's defense. 28.bxc3 f3

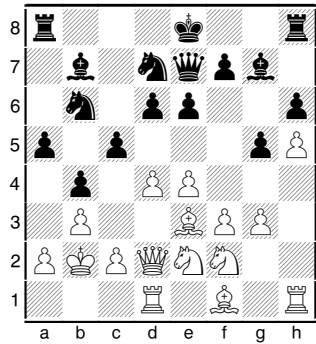
29.Bxe5 fxc2+ 30.Kh2 Rxe5 31.Re1 Qf5
 Whites pieces make a pretty picture on the
 a-file. 32.Ra8 Rxe4 [32...Rxe4 33.Rxf8+
 Qxf8 34.Rxe4 Qxf2--+] 0-1

Leo Whitside - Ron Luther [B06]
 91 Reginal Team Champ Bd 3 APCT, 1991

1.e4 g6 2.d4 Bg7 3.Nc3 d6 4.Be3
 Diagram



This is still one of the main lines even
 today against the Pirc/Modern setup. 4...a6
 Y. Seirawan was playing this at the time
 and breaking new ground with it. 5.Qd2 5.
 a4 is playable but not if black plans on
 castling Q-side. 5...b5 6.0-0-0 A very bold
 move since white has not committed his
 king yet. 6...Nd7 7.h4 h6 8.f3 Ngf6 9.Nh3
 Bb7 10.Nf2 Nb6 11.b3?! This creates tar-
 gets around the white king. 11...e6!
 12.Nd3 12. g4 is more to the point but
 white did not see blacks plan. 12...Qe7
 13.Kb1 Nfd7 14.h5 g5 15.g3 c5! Now
 black siezes the initiative. 16.Nf2 b4 More
 power on the long diagonal. 17.Ne2 a5
 18.Kb2? Diagram (refer to next column)



Triangulation??! 18...c4! 19.Ka1 c3 20.Qc1
 a4 21.Kb1 0-0! Since all of whites pieces
 have been pushed back, black decides to
 activate the other rook to help in the final
 attack. 22.Bg2 Rfc8 23.Ka1 Ba6! 24.Rde1
 axb3 25.cxb3 Nc5!! Open the diagonal at
 any cost! 26.dxc5 Bxe2 27.e5 Tryng to
 close the diagonal. [27.Rxe2 c2+ 28.e5
 Bxe5+ 29.Bd4 Bxd4+ 30.Qb2 Rxa2+
 31.Kxa2 Ra8+ 32.Qa3 Rxa3#; 27.Qc2 Nc4
 28.Rxe2 Rxa2+ 29.Kxa2 Qa7+ 30.Kb1
 Na3+ 31.Kc1 Nxc2 32.Kxc2 Qa2+ 33.Kd1
 Qb1+ 34.Bc1 Qxb3+--+] 27...Nc4! This
 second Knight sacrifice is a killer! 28.Rxe2
 [28.Kb1 Rxa2 29.Kxa2 Qa7+ 30.Kb1 Na3+
 31.Ka1 Nc2+ 32.Kb1 Qa1+ 33.Kxc2 Qa2+
 34.Qb2 Qxb2#] 28...Bxe5 29.a4 Nd2
 30.Qc2 Rxa4+ [30...Rxa4+ 31.bxa4 b3--+]
 0-1



The postal chess player wins his first game.

Games from Missouri Players

E-Mail Comments and Games in ChessBase to KFee@kc.rr.com

James S Ellis (2200) - Selden Trimble (1871)
[B33], 2005 Missouri Class Championships
Columbia, MO (1), 19.06.2005

1.e4 c5 2.Nf3 Nc6 3.d4 cxd4 4.Nxd4 Nf6 5.Nc3
e5 6.Ndb5 d6 7.Bg5 a6 8.Na3 b5 9.Bxf6 gxf6
10.Nd5 Bg7 11.Bd3 Be6 12.0-0 f5 13.Qh5 f4
14.c4 b4 15.Nb1 Bxd5 16.cxd5 Nd4 17.Nd2 0-0
18.g3 Qf6 19.Rac1 f3 20.Rc4 a5 21.Rfc1 Qh6
22.Qxh6 Bxh6 23.Rd1 Rfc8 24.Rxc8+ Rxc8
25.Nc4 Ne2+ 26.Kf1 Nc1 27.Nxd6 Rc7 28.Bb1
Ne2 29.Nf5 Bg5 30.d6 Rc1 31.Ke1 Kf8 32.Bd3
Nd4 33.Nxd4 exd4 34.Rxc1 Bxc1 35.b3 Ke8
36.Bb5+ Kd8 37.e5 Bh6 38.Bc4 Bg7 39.Bxf7
Bxe5 40.Bd5 Kd7 41.Bxf3 Kxd6 42.Ke2 Bf6
43.Kd3 Ke5 44.Be4 h6 45.f4+ Kd6 46.g4 Kc5
47.Bg6 Bh4 48.Ke4 Bf2 49.Bf7 Bg1 50.h4 Kd6
51.g5 hxg5 52.hxg5 Ke7 53.Bc4 Be3 54.Kf5 Kf8
55.Kg4 Kg7 56.f5 Bd2 57.Kh5 Be3 58.f6+ Kf8
59.g6 1-0

Jeffrey Hernandez (1817) - Frederick K Kleist
(2030) [A21], 2005 Missouri Class
Championships Columbia, MO (1), 19.06.2005

1.c4 e5 2.Nc3 d6 3.e4 f5 4.d3 Nf6 5.Nf3 Be7
6.h3 0-0 7.exf5 Bxf5 8.g4 Bg6 9.Bg2 c6 10.Bg5
Na6 11.Nh4 Bf7 12.Nf5 Bg6 13.Nxe7+ Qxe7
14.0-0 Nc5 15.Ne4 Bxe4 16.dxe4 Ne6 17.Be3 g5
18.Qd2 Nf4 19.Bxf4 gxf4 20.f3 Rfd8 21.Qb4 a5
22.Qa3 Nd7 23.Rfd1 Nc5 24.Qc3 Ne6 25.Rd2
Nd4 26.Rb1 d5 27.Re1 Qc5 28.Kh1 dxc4 29.Rc1
b5 30.b3 Kg7 31.bxc4 b4 32.Qb2 a4 33.Rdd1 a3
34.Qf2 Rd6 35.Bf1 Rad8 36.Rb1 R8d7 37.Bd3
Ne6 38.Qxc5 Nxc5 39.Bc2 Rd2 0-1

Frederick K Kleist (2030) - James S Ellis
(2200) [B52], 2005 Missouri Class
Championships Columbia, MO (2), 19.06.2005

1.e4 c5 2.Nf3 d6 3.Bb5+ Bd7 4.Bxd7+ Qxd7 5.0-0
Nf6 6.Qe2 Nc6 7.Rd1 e6 8.d4 cxd4 9.Nxd4 a6
10.c4 Qc7 11.b3 Be7 12.Bb2 0-0 13.Nc3 Rfd8
14.Rac1 Qa5 15.Na4 Qh5 16.Qxh5 Nxh5 ½-½

James S Ellis (2200) - Thomas J Gaul (1775)
[C17], 2005 Missouri Class Championships
Columbia, MO (4), 19.06.2005

6.bxc3 Ne7 7.Nf3 0-0 8.Bd3 Ng6 9.0-0 Nc6
10.Re1 Qa5 11.h4 Qxc3 12.Bd2 Qxc5 13.h5 1-0

James S Ellis (2200) - Ronald G Luther (2217)
[B01], 2005 Missouri Class Championships
Columbia, MO (5), 19.06.2005

1.e4 d5 2.exd5 Nf6 3.d4 Bg4 4.Nf3 Qxd5 5.Be2
Nc6 6.h3 Bxf3 7.Bxf3 Qe6+ 8.Be3 Nd5 9.Qd2
Nxe3 10.fxe3 Qh6 11.0-0 0-0-0 12.Qc3 e5
13.Bxc6 exd4 14.Bxb7+ Kxb7 15.exd4 Bd6
16.Nd2 Rhe8 17.Rad1 Qh4 18.Qf3+ Kb8 19.Nc4
Rf8 20.Nxd6 1-0

Laurence Coker (1772) - Matthew L Barrett
(1688) [B86], 2005 Missouri Class
Championships Columbia, MO (1), 19.06.2005

1.e4 c5 2.Nf3 d6 3.d4 cxd4 4.Nxd4 Nf6 5.Nc3 a6
6.Bc4 e6 7.Bb3 Qc7 8.0-0 Nc6 9.a3 Be7 10.Kh1
0-0 11.f4 Nxd4 12.Qxd4 Rd8 13.f5 d5 14.e5 Bc5
15.Qf4 Ne4 16.Nxe4 dxe4 17.f6 gxf6 18.Qxf6
Bd4 19.Rd1 Bb6 20.Bh6 1-0

Khin M Kyi (1636) - Mike Clark (1767) [A80]
2005 Missouri Class Championships
Columbia, MO (1), 19.06.2005

1.d4 f5 2.Bf4 g6 3.Nf3 Nf6 4.e3 Bg7 5.Nbd2 0-0
6.h3 h6 7.Bd3 d6 8.0-0 Nc6 9.c3 Nh5 10.Bh2 e5
11.dxe5 dxe5 12.Be2 e4 13.Nd4 Nf6 14.Nxc6
bxc6 15.Qb3+ Kh7 16.Rad1 Qe7 17.Qc4 Rb8
18.Nb3 Rb6 19.Rd2 Be6 20.Qc5 Qf7 21.Rfd1
Rfb8 22.Qa5 Bxb3 23.axb3 Rxb3 24.Rd7 Nxd7
25.Qxc7 Nf6 26.Qxf7 R8b7 27.Qe6 Rxb2 28.Bf1
Nd5 29.Qxc6 Nxc3 30.Rc1 Na2 31.Rd1 Nc3
32.Re1 a5 33.Rc1 Na2 34.Rc2 R2b6 35.Qc8 Nc3
36.Rxc3 Bxc3 37.Qxc3 a4 38.Be5 Rb3 39.Qc8
g5 40.Qxf5+ Kg8 41.Bc4+ Rf7 42.Qxf7# 1-0

Robert K Farnham (1737) - Stephen A Brietzke
(1673) [B01], 2005 Missouri Class
Championships Columbia, MO (1), 19.06.2005

1.e4 d5 2.exd5 Nf6 3.d4 Bg4 4.f3 Bf5 5.Nc3
Nxd5 6.Bc4 Nxc3 7.bxc3 Nc6 8.Ne2 e6 9.0-0
Be7 10.Bf4 0-0 11.Ng3 Bg6 12.Rb1 Na5 13.Bd3

Be7 10.Bf4 0-0 11.Ng3 Bg6 12.Rb1 Na5 13.Bd3
Bxd3 4.Qxd3 a6 15.Rfe1 Bd6 16.Bxd6 Qxd6
17.Re5 b6 18.Rh5 g6 19.Ne4 Qd8 20.Rh3 f5
21.Nf2 Qd5 22.Qe3 Qxa2 23.Re1 Rfe8 24.Nd3
Qd5 25.Qh6 Qd7 26.Ne5 Qg7 27.Qg5 Nb7
28.Rh6 Nd8 29.f4 Nf7 30.Nxf7 Qxf7 31.h4 Qe7
32.Re3 a5 33.Rg3 Qxg5 34.hxg5 a4 35.Kf2 a3
36.Rh1 a2 37.Ra1 Rec8 38.c4 c5 39.Rb3 cxd4
40.Rb2 Rxc4 41.Rbxa2 Rxa2 42.Rxa2 Rc7 43.g3
Kg7 44.Ke2 h6 45.gxh6+ Kxh6 46.Ra4 Rd7
47.Kf3 d3 48.cxd3 Rxd3+ 49.Kg2 Kh5 50.Kh3 g5
51.fxg5 Kxg5 52.Rb4 Rd6 53.Rb5 Kf6 54.Kg2
Ke7 55.Kf3 Kd7 56.Rb1 Kc6 57.Kf4 b5 58.Ke5
Rd3 59.Kxe6 Rxc3 60.Kxf5 Rc3 61.Ke4 Kc5
62.Rd1 Kb4 63.Rd3 Kb3 64.Rd8 b4 65.Rh8 Kb2
66.Rh2+ Rc2 67.Rh8 b3 68.Rb8 Rc3 69.Rb7 Kc2
70.Rh7 b2 71.Rh2+ Kb3 0-1

**Luke W Ruggles (1423) - Nathanael Swinger
(1691) [B01], 2005 Missouri Class
Championships Columbia, MO (1), 19.06.2005**

1.e4 d5 2.exd5 Nf6 3.Nf3 Nxd5 4.d4 Nc6 5.Be2
Bg4 6.0-0 g6 7.h3 Bf5 8.c4 Ndb4 9.d5 Nc2
10.dxc6 Qxd1 11.Bxd1 Nxa1 12.cxb7 Rb8
13.Ba4+ Bd7 14.Bxd7+ Kxd7 15.Ne5+ Ke8
16.Rd1 Rxb7 17.Na3 Bg7 18.Nc6 f5 19.Rd8+ Kf7
20.Rxh8 Bxh8 21.Nd8+ Kf6 22.Nxb7 Ke5 23.Kf1
Kd4 24.Be3+ Ke5 25.Nd8 Bf6 26.Bd2 Kd6
27.Bc3 e5 28.f4 Bxd8 29.fxe5+ Ke6 30.b3 Be7
31.Nb5 Nc2 32.Ke2 c6 33.Nxa7 Kd7 34.Kd3
Nb4+ 35.Kd4 Kc7 36.Bxb4 Bxb4 37.c5 Ba3
38.Kc3 Bxc5 39.Kc4 Bxa7 40.a4 Kd7 41.b4 Ke6
42.b5 cxb5+ 43.axb5 Kxe5 44.g3 Ke4 45.g4 h5
0-1

**Stephen A Brietzke (1673) - Laurence Coker
(1772) [B23], 2005 Missouri Class
Championships Columbia, MO (2), 19.06.2005**

1.e4 c5 2.Nc3 Nc6 3.f4 e6 4.Nf3 Nge7 5.Bc4 d5
6.exd5 exd5 7.Bb5 a6 8.Bxc6+ Nxc6 9.0-0 Be7
10.d4 c4 11.Ne5 0-0 12.Nxc6 bxc6 13.Ne2 Re8
14.c3 Bd6 15.Re1 Qh4 16.Bd2 Bg4 17.h3 Bf5
18.Nc1 Be4 19.Qg4 Qd8 20.Ne2 f5 21.Qg3 Re6
22.Qh2 Be7 23.Ng3 Bh4 24.Re2 Bxg3 25.Qxg3
Rg6 26.Qh2 Rb8 27.Be1 h5 28.h4 Kf7 29.Qh3 a5
30.Qe3 Re6 31.Qd2 Re7 32.Kh2 Reb7 33.Qc1
Rb5 34.a4 Rb3 35.Ra2 Qb6 36.Qe3 Qc7 37.Qg3
Qe7 38.Qe3 Re8 39.Qc1 Qd7 40.Ra3 Reb8 ½-½

**Nathaniel S Fast (1792) - Khin M Kyi (1636)
[A36], 2005 Missouri Class Championships
Columbia, MO (2), 19.06.2005**

1.c4 g6 2.g3 Bg7 3.Bg2 Nf6 4.Nc3 c5 5.a3 Nc6
6.Rb1 0-0 7.b4 cxb4 8.axb4 a6 9.Qa4 e6 10.b5
Ne7 11.Ba3 Re8 12.Bd6 Nf5 13.c5 Nxd6 14.cxd6
Qb6 15.bxa6 Qxd6 16.a7 Qc5 17.Ra1 d5 18.Qb5
Qc7 19.Nf3 Bd7 20.Qa5 b6 21.Qa6 Ne4 22.0-0
Nxc3 23.dxc3 Qxc3 24.Rfc1 Qb4 25.Rab1 Qa5
26.Qxa5 bxa5 27.Rb7 Bc8 28.Rb8 Ba6 29.Rcb1
Bf8 30.Rxe8 Rxe8 31.Rb8 Rxh8 32.axb8Q Bc4
33.Ne5 Kg7 34.Qc7 Kf6 35.f4 Be7 36.Ng4+ Kf5
37.Qxe7 1-0

**Nathanael Swinger (1691) - Tom J Epplin-Zapf
(1644) [C50], 2005 Missouri Class
Championships Columbia, MO (2), 19.06.2005**

1.e4 e5 2.Nf3 Nc6 3.Bc4 Bc5 4.0-0 Nf6 5.d4
Bxd4 6.Nxd4 Nxd4 7.f4 d6 8.c3 Nc6 9.f5 h6
10.b4 Ne7 11.Qf3 Bd7 12.Be3 Bc6 13.Nd2 d5
14.Qg3 Rg8 15.exd5 Bxd5 16.Qxe5 Ng4 17.Qf4
Bxc4 18.Nxc4 Nxe3 19.Qxe3 f6 20.Rad1 Qc8
21.Rfe1 1-0

**Mike Clark (1767) - Kevin Y Cao (1460) [A03],
2005 Missouri Class Championships
Columbia, MO (2), 19.06.2005**

1.f4 d5 2.g3 Nc6 3.Nf3 Nf6 4.Bg2 Bf5 5.0-0 e6
6.h3 Bd6 7.d3 0-0 8.Nh4 Bg6 9.Nc3 Nh5 10.Kh2
Nxg3 11.Kxg3 Qg5+ 12.Kh2 Qxh4 13.e4 Rad8
14.Qg4 Qxg4 15.hxg4 dxe4 16.dxe4 f5 17.e5
Bc5 18.g5 Bh5 19.Na4 Be7 20.c3 Be8 21.b3 b5
22.Nb2 Nb8 23.Be3 Nc6 24.Rad1 Rxd1 25.Rxd1
Ba3 26.Nd3 Bh5 27.Rd2 Ne7 28.Bc5 Bxc5
29.Nxc5 Bf7 30.Rd7 Ng6 31.Kg3 Rc8 32.Bb7
Re8 33.Rxc7 Re7 34.Rc8+ Re8 35.Rxe8+ Bxe8
36.Nxe6 a5 37.Nc7 Bd7 38.e6 Bxe6 39.Nxe6 h5
40.gxh6 gxh6 41.Nd4 h5 42.Nxf5 h4+ 43.Nxh4
Nxh4 44.Kxh4 Kf7 45.Kg5 Kg7 46.Kf5 Kf7
47.Ke5 Ke7 48.Kd5 Kf6 49.Kc5 Kf5 50.Kxb5 Kxf4
51.Kxa5 Ke5 52.Kb6 Kd6 53.c4 Kd7 54.c5 Kd8
55.c6 Ke7 56.c7 Kd6 57.c8Q Ke7 58.Qc6 Kd8
59.Qc7+ Ke8 60.Bd5 Kf8 61.Qf7# 1-0

**Matthew L Barrett (1688) - Luke W Ruggles
(1423) [E94], 2005 Missouri Class
Championships Columbia, MO (2), 19.06.2005**

1.d4 Nf6 2.c4 g6 3.Nc3 Bg7 4.e4 d6 5.Nf3 0-0
6.Be2 e5 7.0-0 Nbd7 8.Bg5 Re8 9.Qd2 exd4
10.Nxd4 h6 11.Bxh6 Nxe4 12.Nxe4 Bxh6
13.Qxh6 Rxe4 14.Rad1 c5 15.Nf5 gxf5 16.Rd3
Ne5 17.Rxd6 Qh4 18.Bh5 Be6 19.f4 Ng6 20.g3
Qf6 21.Rfd1 Rd4 22.R1xd4 cxd4 23.g4 fxg4
24.Bxg6 fxg6 25.f5 Qxf5 26.Rxd4 Rf8 27.Qc1
Qf2+ 28.Kh1 Qxd4 0-1

**Nathanael Swinger (1691) - Nathaniel S Fast
(1792) [B30], 2005 Missouri Class
Championships Columbia, MO (3), 19.06.2005**

1.e4 c5 2.Nf3 Nc6 3.Nc3 g6 4.d3 Bg7 5.g3 e5
6.Be3 Nd4 7.Bg2 Ne7 8.Qd2 d6 9.Bg5 f6 10.Be3
Bh3 11.0-0 Nxf3+ 12.Bxf3 Bxf1 13.Rxf1 Rb8
14.Bg4 0-0 15.Be6+ Kh8 16.Nd5 f5 17.Bg5 Re8
18.Bf7 Bf8 19.Bf6+ Bg7 20.Qh6 Rg8 21.Bxg8
Qxg8 22.Nxe7 Qf7 23.Qxg7+ Qxg7 24.Bxg7+
Kxg7 25.exf5 Kf6 26.Nd5+ Kxf5 27.c4 b5 28.b3
g5 29.Re1 h5 30.h4 g4 31.Nc7 bxc4 32.dxc4 a5
33.Nb5 Ke6 34.Rd1 Rb6 35.Kg2 e4 36.Nc3 Rb4
37.Nd5 Rb7 38.Nf4+ Ke7 39.Rd5 a4 40.Rxh5 Kf6
41.Nd5+ Ke6 42.Rh6+ Ke5 43.bxa4 Rb2 44.Rg6
Rxa2 45.Ne3 Rxa4 46.Rxg4 Kd4 47.h5 d5 48.cxd5
c4 49.d6 Ra8 50.Nxc4 Kxc4 51.Rxe4+ 1-0

**Laurence Coker (1772) - Mike Clark (1767)
[B38], 2005 Missouri Class Championships
Columbia, MO (3), 19.06.2005**

1.e4 c5 2.Nf3 g6 3.d4 cxd4 4.Nxd4 Bg7 5.Be3
Nc6 6.c4 Nf6 7.Nc3 0-0 8.Be2 d6 9.0-0 a6
10.Qd2 Re8 11.f3 Bd7 12.Rac1 Qa5 13.Rfd1
Nxd4 14.Bxd4 b5 15.b3 b4 16.Nd5 Nxd5
17.Bxg7 Kxg7 18.cxd5 Rac8 19.Bc4 Qb6+
20.Qf2 Qb7 21.Qe2 Ra8 22.Rc2 a5 23.Rdc1
Rec8 24.Kf1 Ra7 25.Qe3 Rca8 26.Qd4+ ½-½

**Jose B Clarin (1730) - Stephen A Brietzke
(1673) [A18], 2005 Missouri Class
Championships Columbia, MO (3), 19.06.2005**

1.c4 Nf6 2.Nc3 e6 3.e4 Bb4 4.d3 Bxc3+ 5.bxc3
Ng8 6.Nf3 Ne7 7.a4 a5 8.h4 c6 9.c5 d5 10.cxd6
Qxd6 11.Ba3 Qd8 12.g3 Nd7 13.Bg2 0-0 14.0-0
Nf6 15.Re1 Qc7 16.e5 Nfd5 17.Bd6 Qd7 18.Qb3
Re8 19.Nd2 Nf5 20.Ba3 b5 21.c4 Nd4 22.Qb2
Nb4 23.axb5 Nxd3 24.bxc6 Qa7 25.Qc3 Nxe1
26.Rxe1 Rb8 27.Bd6 Rb4 28.Kh2 Qb6 29.Bxb4
axb4 30.Qe3 Rd8 31.Nb3 Ba6 32.Rd1 Bxc4

33.Rxd4 Bxb3 34.Rxd8+ Qxd8 35.Qxb3 1-0

**Laurence Coker (1772) - Nathanael Swinger
(1691) [B01], 2005 Missouri Class
Championships Columbia, MO (4), 19.06.2005**

1.e4 d5 2.exd5 Nf6 3.d4 Bg4 4.Be2 Bxe2 5.Qxe2
Qxd5 6.Nf3 e6 7.0-0 Be7 8.c4 Qd7 9.Rd1 c6
10.Nc3 0-0 11.h3 Na6 12.Be3 Nc7 13.Rac1 Rfd8
14.Ne5 Qe8 15.Bf4 Rac8 16.Ne4 Nxe4 17.Qxe4
Bf6 18.Ng4 Be7 19.Be5 f5 20.Qf4 fxg4 21.Bxc7
Rd7 22.Be5 gxh3 23.Rd3 hxg2 24.Rg3 Bf8
25.Kxg2 Qf7 26.Qh4 Qf5 27.Rh1 Rf7 28.f4 Be7
29.Qg4 Qxg4 30.Rxg4 Bf6 31.Re1 h5 32.Rg6
Kh7 33.Rg3 Bh4 34.Rh1 Bxg3 35.Rxh5+ Kg8
36.Kxg3 Rf5 37.Rh4 Kf7 38.Rg4 Rg8 39.Kf3 g5
40.Ke4 gxf4 41.Rxg8 Kxg8 42.Bxf4 Rh5 43.Be5
Kf7 44.a4 a6 45.a5 Rh4+ 46.Bf4 Kf6 47.b4 Rh3
48.Be5+ Kg5 49.d5 Rh4+ 50.Kd3 exd5 51.cxd5
cxd5 52.Bd6 Kf5 53.Bc5 Ke5 0-1

**Luke W Ruggles (1423) - Mike Clark (1767)
[B27], 2005 Missouri Class Championships
Columbia, MO (4), 19.06.2005**

1.e4 c5 2.Nf3 g6 3.Bc4 Bg7 4.d4 cxd4 5.Nxd4
Nc6 6.Qf3 Nf6 7.Nxc6 bxc6 8.e5 Qa5+ 9.Nc3
Qxe5+ 10.Be3 0-0 11.0-0 d5 12.Bb3 Qd6 13.h3
e5 14.Na4 Nd7 15.c4 d4 16.c5 Nxc5 17.Nxc5
Qxc5 18.Rac1 Qe7 19.Bd2 Bb7 20.Qe2 Rac8
21.f4 e4 22.f5 g5 23.Qh5 e3 24.Bb4 c5 25.Bxc5
Rxc5 26.Rxc5 Qxc5 27.f6 e2 28.Qxe2 d3+
29.Qf2 Qxf2+ 30.Rxf2 Bh6 31.Rd2 Rd8 32.Bc4
Be4 33.g4 Bf8 34.Bxd3 Rxd3 35.Re2 Bc5+
36.Kh2 Bd6+ 37.Kg1 Rg3+ 38.Kf2 Rf3+ 39.Ke1
Bg3+ 40.Kd1 Rd3+ 41.Kc1 Bf4+ 42.Kc2 Re3+
43.Kd2 Rxe2+ 44.Kxe2 h6 45.b4 Kh7 0-1

**Stephen A Brietzke (1673) - Tom J Epplin-Zapf
(1644) [B23], 2005 Missouri Class
Championships Columbia, MO (4), 19.06.2005**

1.e4 c5 2.Nc3 Nc6 3.f4 e6 4.Nf3 d6 5.Bb5 Bd7
6.0-0 Be7 7.d3 a6 8.Bxc6 bxc6 9.Bd2 Qb6
10.Na4 Qc7 11.Qe1 d5 12.Bc3 Nf6 13.exd5 Nxd5
14.Be5 Bd6 15.Bxd6 Qxd6 16.g3 Rb8 17.Nd2
Nb4 18.Qc1 Qd4+ 19.Rf2 Nxd3 20.cxd3 Qxa4
21.Qxc5 Qb4 22.Ne4 Qxc5 23.Nxc5 Rb5 24.Rc1
Ke7 25.Rfc2 Rc8 26.Kf2 Be8 27.b3 Rd8 28.Ke3
Rd5 29.Ne4 Rb8 30.Rc5 Rb5 31.Rxd5 cxd5
32.Nd2 ½-½

Kevin Y Cao (1460) - Matthew L Barrett (1688)
[B90], 2005 Missouri Class Championships
Columbia, MO (4), 19.06.2005

1.e4 c5 2.Nf3 d6 3.d4 cxd4 4.Nxd4 Nf6 5.Nc3 a6
6.Bd3 Qb6 7.Nf3 Bg4 8.Rb1 e6 9.Be3 Qc7 10.h3
Bxf3 11.Qxf3 Nc6 12.0-0 Be7 13.Qg3 Rg8
14.Na4 Nd7 15.Nc3 g5 16.f4 g4 17.f5 Nce5
18.fxe6 fxe6 19.Bf4 h5 20.Qe3 0-0-0 21.b4 Qxc3
22.Rb3 Qc7 23.Bxe5 Nxe5 24.b5 a5 25.Be2 Bg5
26.Qa7 Qc5+ 27.Qxc5+ dxc5 28.Rc3 b6 29.Bc4
Nxc4 30.Rxc4 gxh3 31.gxh3 Be3+ 32.Kh1 Rd2
33.Rc3 Bd4 34.Rcf3 Rgg2 35.Rf8+ Kd7 36.R1f7+
Kd6 37.e5+ Kxe5 38.Rf5+ exf5 39.Rg8 Rh2# 0-1

Jose B Clarin (1730) - Nathanael Swinger
(1691) [A16], 2005 Missouri Class
Championships Columbia, MO (5), 19.06.2005

1.c4 Nf6 2.Nc3 g6 3.h4 Bg7 4.Nd5 Nxd5 5.cxd5
h5 6.Nf3 c6 7.Qb3 Qb6 8.Qxb6 axb6 9.e4 e6
10.Bc4 exd5 11.exd5 b5 12.Bb3 c5 13.0-0 0-0
14.d4 c4 15.Bc2 b6 16.Bf4 Na6 17.Bd6 Re8
18.Rfe1 Bb7 19.Ne5 Bxd5 20.Nxd7 Rxe1+
21.Rxe1 Rd8 22.Re7 Be6 23.Bxg6 fvg6 24.Be5
Rxd7 25.Rxe6 Bxe5 26.dxe5 Kf7 27.Rxb6 Nc7
28.f4 Re7 29.g3 Rd7 30.Kf2 Ke7 31.Rxg6 Rd2+
32.Ke3 Rxb2 33.Rg7+ Kd8 34.f5 Rxa2 35.Rg8+
Kd7 36.Rg7+ ½-½

Mike Clark (1767) - Nathaniel S Fast (1792)
[A03], 2005 Missouri Class Championships
Columbia, MO (5), 19.06.2005

1.f4 d5 2.g3 Nf6 3.Bg2 Bf5 4.Nf3 e6 5.0-0 Nbd7
6.h3 c6 7.d3 h6 8.Nc3 Bc5+ 9.d4 Bd6 10.e3 Ne4
11.Ne2 Rc8 12.c3 c5 13.Bd2 g5 14.a3 g4
15.hxg4 Bxg4 16.Be1 Qb6 17.b4 c4 18.Ne5 Ndf6
19.Qa4+ Rc6 20.Nxc6 bxc6 21.Bf3 Bh3 22.Bg2
Bg4 23.Bf3 Bh3 24.Bg2 Bg4 25.Bf3 ½-½

Henry Cao (1380) - Terrance M Shuman (1459)
[C10], 2005 Missouri Class Championships
Columbia, MO (1), 19.06.2005

1.e4 e6 2.d4 d5 3.exd5 Qxd5 4.Nc3 Bb4 5.Nf3
Bxc3+ 6.bxc3 Nc6 7.c4 Qe4+ 8.Be3 Qf5 9.Bd3
Qh5 10.0-0 Nge7 11.Rb1 Nf5 12.d5 Nxe3 13.fxe3
Ne5 14.Nxe5 Qxe5 15.Qf3 0-0 16.Qf4 Qxf4
17.Rxf4 e5 18.Rf2 b6 19.e4 Bb7 20.c5 Rfb8
21.c6 Bc8 22.Rbf1 f6 23.Bc4 Kf8 24.h3 a5 25.a4
Ba6 26.Bxa6 Rxa6 27.Rb1 Ke7 28.Kf1 Kd6

29.Ke2 Kc5 30.Rf3 Rf8 31.Kd3 Raa8 32.Kc3 g6
33.Rbf1 f5 34.exf5 Rxf5 35.Rxf5 Kxd5 36.Rf6 e4
37.Re1 Re8 38.Rf7 Kxc6 39.Rxh7 Re5 40.Rh4
Kd5 41.Rg4 g5 42.h4 gxh4 43.Rxh4 c6 44.Rd1+
Kc5 45.Rd4 Rg5 46.Rhx4 Rg3+ 47.Rd3 1-0

Henry Cao (1380) - Frank H Smith (1452)
[B50], 2005 Missouri Class Championships
Columbia, MO (2), 19.06.2005

1.e4 c5 2.Nf3 d6 3.Bc4 g6 4.Nc3 Bg7 5.0-0 Nc6
6.d3 Nf6 7.Be3 0-0 8.h3 Bd7 9.Qd2 Re8 10.Rad1
a6 11.Rfe1 b5 12.Bb3 Rb8 13.Bh6 a5 14.a3 a4
15.Ba2 b4 16.Nxa4 Ra8 17.Bb3 Nd4 18.Nxd4
cxd4 19.Qxb4 Bxh6 20.Qxd4 Bg7 21.Nc3 Qc7
22.Qe3 e6 23.d4 Bc6 24.f3 Nd7 25.Na2 Nb6
26.Qc3 Rec8 27.Qd2 Ba4 28.Re3 Bh6 29.Rc3
Bxd2 30.Rxc7 Be3+ 31.Kh2 Rxc7 32.g3 Bxb3
33.cxb3 Rc2+ 34.Kh1 Rxb2 35.Nb4 Rxb3 0-1

Kyle G Sillin (1469) - Edward C Baur (1524)
[B09], m2005 Missouri Class Championships
Columbia, MO (2), 19.06.2005

1.e4 d6 2.d4 Nf6 3.Nc3 g6 4.f4 Bg7 5.Nf3 c5
6.dxc5 Qa5 7.Qe2 Qxc5 8.Be3 Qc7 9.0-0-0 0-0
10.h4 Ng4 11.Bd4 Nc6 12.Bxg7 Kxg7 13.h5 Bd7
14.hxg6 hxg6 15.g3 Rh8 16.Bh3 Nf2 17.Qxf2
Rxh3 18.Rxh3 Bxh3 19.Rh1 Rh8 20.Ng5 Qc8
21.f5 Bg4 22.Rxh8 Qxh8 23.fvg6 Ne5 24.gxf7
Qh1+ 25.Kd2 Nf3+ 26.Kd3 Ne5+ 27.Kd4 Bf3
28.Qe3 Qh5 29.Qf4 Nc6+ 30.Ke3 1-0

Frank H Smith (1452) - Joe W Hoffmann
(1513) [B24], 2005 Missouri Class
Championships Columbia, MO (5), 19.06.2005

1.e4 c5 2.Nc3 Nc6 3.g3 e6 4.Bg2 a6 5.Nf3 Qc7
6.0-0 b5 7.d3 Bb7 8.Re1 d6 9.Bf4 Nge7 10.Qd2
0-0-0 11.Ne2 Ng6 12.c3 Nxf4 13.Nxf4 h6 14.Ne2
g5 15.b4 Bg7 16.Rac1 g4 17.Nh4 Ne5 18.f4 gxf3
19.Nxf3 Nxf3+ 20.Bxf3 h5 21.Qc2 Bh6 22.Rb1
Be3+ 23.Kg2 h4 24.bxc5 dxc5 25.Rh1 h3+
26.Kf1 f5 27.Ke1 Qd7 28.Rd1 Qf7 29.Rf1 Rh6
30.exf5 Bxf3 31.Rxf3 Qb7 32.Rxe3 Qh1+ 33.Kd2
Qxh2 34.fxe6 Qg2 35.e7 Re8 36.d4 h2 37.Qf5+
Kb8 38.Qf4+ 1-0



Regional Chess Clubs

Kansas City Area Clubs

E-mail KFE@kc.rr.com with changes.

The Chess Club Vivion West Shopping Center (North KC) 2314 NW Vivion, Riverside MO 64150 Meets: Wed. Fri. Sat, 6:00 to 12:00 PM Single visit \$5; Contact: Kenneth Fee (816) 392-3576 Club Web site www.powerpawn.net

Westport Chess Club (On the Plaza) This club meets at Uno Chicago Grill at 4710 Jefferson Street, Kansas City, MO 64112 on a year-round basis. Meets: Tuesdays 6:30 to 11:00 PM \$2 fee adults, \$1 under 18 Contact: Bill Mendus wmendus@swbell.net

Rockhurst Community Chess Club Rockhurst University Community Center 5401 Troost Ave., Kansas City MO 64110 Meets: Saturdays 10:00am to 1:00pm Contact: Alicia Douglas (816) 501-4306
Kansas City (KS) Public Library 625 Minnesota, Kansas City KS Meets: Wednesdays 5:30 to 8:00 PM Contact: Brooke Leavitt (913) 551-3280

St. Louis Area Clubs

St. Louis Chess Club St. Louis Bread Company 6630 Delmar Ave. (U-City) Chess played every night 6-9pm Most players come on weekends Contact: Joseph Garnier

Normandy Chess Club St. Louis County Library 7606 Natural Bridge Road (314) 382-3116 Meets: Tuesdays 6 to 9 PM Contacts: Larry Sykes/Mark Reddick

Soulard Chess Club Nadine's in Soulard 1931 S. 12th St. (314) 436-3045 Meets: Tuesdays 6:30 to whenever (starting April 5, 2005) Contact: Jeff Vollmer

Indian Trails Branch Library St. Louis County Library 8400 Delport Drive (314) 428-5424 Meets Tuesdays 3:30 PM to whenever. Contact: any library employee Library information and map.

Clubs in other areas of Missouri

Columbia -- Univ. of Missouri Chess Club Memorial Union (518 Hitt Street) Room S203 May-August: Lakota's Coffee, 24 S. Ninth St. Meets: Mondays 7 to 10 PM Contact: Charles Ward

Jefferson City -- Jefferson City Chess Club Thomas Jefferson Middle School, Room 800 1201 Fairgrounds Rd, Jefferson City, MO Meets: Wednesdays 7 to 9pm Contacts: Bob Howe or Thomas Rehmeier

Rolla -- UMR Chess Club University Center East Cafeteria University of Missouri-Rolla Meets: Thursdays 6 to ?? PM Contact: Gabriel Zlavog

Springfield -- Springfield Chess Club Southside Senior Center 2215 S. Fremont Ave., Springfield, MO Meets: Fridays 6:30 to 11:00 PM USCF-rated events every Friday Contact: Jim Baumlin (417) 831-6585

Lamar - Lamar Chess Club Meetings alternate between sites: [Click here for schedule and playing sites](#) Meeting hours: Mondays 6-10pm Contact: Alan Chilton PO Box 561, Lamar MO 64759

St. Joseph -- Frontier Chess Association Conference room, St. Joseph Public Library St. Joseph, MO (In south parking lot of East Hills Shopping Center) Meets: Fridays 7-9 PM Club Web Fees: \$5 per visit, \$40 annual Contact: Jim Heitz (816) 238-3048 after 5PM

Warrensburg -- CMSU Chess Club University Union Central Missouri State University Meets: Wednesdays 6:30 to ?? PM (No current contact known).

Missouri Tournament Life

E-mail KFEE@kc.rr.com with TLAs.

The 2006 New Year Open, January 14-16

7SS, G120. North KC Area. The Chess Club, 2314 NW Vivion Rd., Riverside, MO 64150. EF: \$49 by 1/12, \$59 site. Reg: 11:30-12:30. One Section. Rds: Sat. 1PM/5:30PM Sun. 9AM/1:30/6PM Mon. 9AM/1:30. Entries: Kenneth Fee 1537 Baker Street, Liberty, MO 64068. Make checks to Ken Fee. Paypal entry to chessclub@powerpawn.net. Guaranteed \$750 Prizes: Open 1st \$200 Class XA 1st \$200 Class B/C 1st \$200 U1400 1st \$150. Byes: Two ½ point byes Info: www.powerpawn.net 816-392-3576 or e-mail at KFEE@kc.rr.com.

Kansas City Masters Invitational, January 14-16

See <www.powerpawn.net> for pairings and results.

The Kansas City Open, February 18

4SS G60. The Chess Club at Vivion West Shopping Mall (NKC), 2314 NW Vivion Rd., Riverside MO 64150 816-505-1615. Reg:8:30-9:30AM.RD1 10AM. Ent \$35. by 2-16;\$45 Site. \$750 Prizes Unconditionally Guaranteed!!! 1st \$200/1st XA \$150/ 1st BC \$200/1st U1400 \$150. MCA membership req'd, avail. at site from \$5, OSA. Entry/Info: Ken Fee,1537 Baker St.Liberty, MO 64068 (816)-392-3576.

Paul Morphy Open — Columbia, February 18

3SS, G/75. UMC Memorial Union room S203, 518 Hitt St., Columbia MO. Directions: From I-70 exit 126, south on Providence, east on Rollins, north on Hitt. Reg: 9:30-10:15. Rds: 10:30, 1:15, 4:00. EF: \$1, NO PRIZES -- just the satisfaction of playing well. MCA membership required, available at site from \$5, other states accepted. Wheelchair accessible. Click for map and driving info; click for parking info. No advance entries. Info: Charles Ward, 2400 Cimarron Drive, Columbia MO 65203, 573-443-6685.

2006 SwissZILLA!, March 4-5

6SS, G/75; Hampton Inn Westport, 2454 Old Dorsett Rd, Maryland Hgts, MO 63043. Cont. breakfast (for overnights), gym, free pkgng, wrls net, pool. \$\$G \$400 1st; \$2000 b/80: 1st X, A, B, C, D, U1200, \$240 each and 1st unr \$160. EF: \$40 until 3-1, \$45 at site; Site entries cash only. Reg: 8:30-9:45; Rds: Sat 10, 1, 3:30, 6:30, Sun 12:30, 3; USCF; Bye any round - rounds 4-6 must commit before round 3; HR: \$74; 314-298-7878; Reserve by 2-4 or rate may increase; AL_Howlett@charter.net; 314-497-4971; 4623 Robbins Grove Dr. Florissant, MO 63034; NS, NC.

Mizzou Quads, April 1

3RR, G/90. Memorial Union, 518 Hitt St., Columbia. Directions: From I-70 exit 126, south on Providence, east on Rollins, north on Hitt. EF: \$20 if mailed by 3/25, \$25 at site. First prize each quad \$70.Site entries cash only. Reg: 9:15-10. Rds: 10:30-2-5:30. MCA memb. req'd, avail. at site from \$5; OSA. Ent/Info: Charles Ward, 2400 Cimarron Drive, Columbia MO 65203, 573-443-6685, czar@tranquility.net.

2006 Missouri Open in Kansas City

September 16-17th, 2006

See Spring MCB for TLA!

Come Watch!

Kansas City Masters Invitational

January 14th-15th, 2006

Where: The Chess Club at Vivion West Shopping Mall (North Kansas City), 2314 NW Vivion Rd. Riverside MO 64150. Prizes: 1st \$300 2nd \$100 3rd/4th \$50 Information: Kenneth Fee at 816-392-3576 or e-mail at KFEE@kc.rr.com Five Rounds -Round Robin G120.

Players	Rated	State
1. Kenneth Jones	2315	Missouri
2. WIM Yuliya Levitan	2237	Kansas
3. Ron Luther	2200	Missouri
4. Jason Kasick	2111	Kansas
5. Tim Steiner	2057	Kansas
6. Daniel Goffstein	2039	Iowa



Club Members Waiting for the Kaidanov Blitz Simul

Return Address
The Chess Club
2314 NW Vivion Road
Riverside MO 64150-9424