



MISSOURI CHESS BULLETIN

www.mochess.org

FRANK SMITH EARNS MISSOURI CHAMPIONSHIP INVITATION



Volume 34 Number Two—Spring 2007 Issue

Serving Missouri Chess Since 1973

2006-2007 MCA Officers and Board of Directors

Region 1 (St. Louis)

Treasurer William H. Wright, 449 W. Jefferson Ave., Apt. B, St. Louis, MO 63122
Ed Baur, 7138 Lindenwood, St. Louis, MO 63109

Vice President Tony Rich, 6423 Towne Wood Drive, St. Louis, MO 63017

Region 2 (Kansas City)

President Ken Fee, Jr., 1537 Baker, Liberty, MO 64068

Secretary Wayne Bartlett, P.O. Box 417, Oak Grove, MO 64075

Bryon McLaughlin, 836 NE Colleen Drive, Lee's Summit, MO 64086

Region 3 (Rest of State)

Bob Howe, 4403 Gage Place, Columbia, MO 65203

Thomas Rehmeier, 5217 Denice Street, Jefferson City, MO 65109

Mike Clark, 1499 Summit View Drive, Holts Summit, MO 65043

Membership and Subscriptions

The *Missouri Chess Bulletin* is the official quarterly publication of the Missouri Chess Association. MCA membership includes a subscription to the *MCB*. E-members receive their *MCB* via the internet (no printed copy). Include e-mail address with dues.

Annual Membership Rates

Regular	\$12
E-Member	\$5
Scholastic	\$8
Affiliate	\$10
Patron	\$25
Family Membership	\$18 (With 1 copy of print version of <i>MCB</i> per family)
Family Online Membership	\$10 (With online <i>MCB</i>)
Scholastic Family Membership	\$12 (With 1 copy of print version of <i>MCB</i> per family)

**Please send address changes and memberships to
Wayne Bartlett, P.O. Box 417, Oak Grove, MO 64075**

Layout and design by Ken Fee and Bryon McLaughlin

MISSOURI CHESS - Spring 2007

- 3 Missouri Champions and Ratings
- 4 **From the Editor**
Ken Fee
- 6 **Missouri Board of Director's Meeting**
- 9 **The Westport Chess Club**
Tony Dutiel
- 10 **A Gem, a Shocker, and a Little Lady**
Tim Steiner
- 16 **Missouri Open and Invitational**
- 17 **Missouri Scholastic Championships**
- 19 **Improving Missouri Chess**
Mike Clark
- 21 **Spotlight on Missouri Chess: Brad Schlosser**
Steve Goldberg
- 22 **From the Pawn Shop: A Review of Games**
Loal Davis
- 28 Chess Links
- 29 **Games from Missouri Players**
- 32 Regional Chess Clubs
- 33 Missouri Tournament Life



CALENDAR FOR MCB ARTICLE AND GAME SUBMISSIONS.

MCB Issue	Winter	Spring	Summer	Fall
Deadline for Articles	December 1	March 1	June 1	September 1
Publication Date	January 15	April 15	July 15	October 15

Note: Please send articles in Microsoft Word and Games in Chessbase or PGN format. Submissions go to Ken Fee, editor, at <chessclub@powerpawn.net>.

MISSOURI CHESS HALL OF FAME:

Nominations are invited for the next inductee/s into the Missouri Chess Hall of Fame. The deadline for nominations is May 1, 2007. Please send your nominations to MCA secretary Wayne Bartlett at P.O. Box 417, Oak Grove, MO 64075 or by email to WayneBartlett@aol.com. Include a biography and a description of the nominee's contributions to chess in the state of Missouri. The inductee/s will be announced at the Missouri Open and will receive a plaque commemorating the award.

MISSOURI TOP 50

Rank	Name	Current/Upcoming Published Rating
1.	MICHAEL A. BROOKS	2438
2.	CHARLES LAWTON	2363
3.	KENNETH E. JONES	2304
4.	BART F GIBBONS	2260
5.	RONALD LUTHER	2243
6.	LOAL W. DAVIS	2200
7.	JAMES S. ELLIS	2200
8.	THOMAS G. GOSSELL	2190
9.	KENNETH P. THOMAS	2162
10.	ANDREW J. WITTE	2159
11.	BOB HOLLIMAN	2120
12.	JAMES F. MCLAUGHLIN	2119
13.	JAMES R. VOELKER	2115
14.	ROBERT M. JACOBS	2100
15.	ZEBEDEE FORTMAN	2057
16.	GARY MICHAEL WHITE	2057
17.	WALDO ODAK	2038
18.	JAMES A. DAVIES	2019
19.	KEVIN DALE JOHNSON	2000
20.	DANIEL R. HUFF	1980
21.	STEVEN D. BANGE	1947
22.	DWIGHT BEASLEY	1938
23.	GARY FREEMAN	1920
24.	DANIEL A. JUENGEL	1917
25.	MARK T. SMITH	1907
26.	SELDEN TRIMBLE	1906
27.	FRANCIS CROW	1906
28.	ZEBEDEE FORTMAN, Jr.	1900
29.	KEVIN GUO	1900
30.	MARK A COGLEY	1892
31.	NATHANIEL S. FAST	1876
32.	TIM B BLACO	1876
33.	ALEX J. MARLER	1853
34.	RAYMOND J BIRT	1836
35.	DANIEL J. CORYEA	1833
36.	KENNETH E FEE JR	1829
37.	STEVE SAIDI	1823
38.	TONY DUTIEL	1810
39.	JOSEPH A. GARNIER	1802
40.	STEPHEN R. LANDRUM	1800
41.	ALBERT D. HOWLETT	1794
42.	WAYDE STALLMANN	1791
43.	NATHANAEL D. SWINGER	1791
44.	DANIEL O. ROBERTS	1786
45.	BEHROOZ M VAKIL	1780
46.	CHRIS A. HUNT	1774
47.	JIM POAGE	1771
48.	ROGER W. SMITH	1767
49.	WILLIAM STARNES	1758
50.	JAMES V. STAUDT	1753

To be eligible for the Missouri Top 50 List, a player must be a current tournament player. Current as of this printing is the 2005 through 2007 USCF Rating List.

Missouri Champions

2006 MO State & Quick Champion Ron Luther



2006 MO Champions Open Champion

Francis Crow

Reserve Champion

Nick Manley

Blitz Champion

Kevin Cao

Bughouse Champions

Tony Dutil & Frank Chressanthis

2006 MO Class Champions

Master/Expert -- Michael Brooks

Class A -- Tony Song

Class B -- Tony Rich

Class C -- Shan Siddiqi

Class D -- Vikram Arun

Class E -- Dan Laurila

Class F -- Tyler Harris



**2007 MO HS State
Champion
Nick Karlow
Denker Champion**



**2007 MO HS State
Champion
Tess Butcher
Polgar Champion**

2007 MO HS Team Champion Parkway Central HS/Clayton HS

FROM THE EDITOR by Ken Fee, Jr.

E-mail Ken at chessclub@powerpawn.net, or visit www.powerpawn.net

The 2007 Kansas City Open Report

Frank Smith earns spot in the MO Invitational State Championship



The Kansas City Open was held February 16th-18th at The Chess Club in Kansas City. While attendance was low due to the weather, the players battled for a spot in the 2007 Missouri In-

vitational.

Missouri State Champion Ron Luther won the Kansas City Open and the \$200 first prize. Frank Smith, a tenth grade student from Lee's Summit North High School, finished second, earning a spot in the 2007 Missouri Invitation State Championship. Since the 2006 KC Open, Frank's rating has improved from 1437 to 1755 due to hard work and lessons with Ron Luther. Below are three of Frank's games with higher-rated players.



Frank Smith

Cogley, Mark (1892) - Smith, Frank (1685) [E12], KC Open (2.3), 17.02.2007

1.d4 Nf6 2.c4 e6 3.Nf3 b6 4.Nc3 Bb4 5.Bg5 h6
6.Bxf6 Qxf6 7.e3 Bb7 8.Be2 0-0 9.0-0 Bxc3
10.bxc3 d6 11.Rb1 c5 12.Nd2 Nd7 13.Bf3 Bxf3
14.gxf3 Qe7 15.Kh1 Nf6 16.Rg1 Qb7 17.Qf1 Kh7
18.Qh3 Rg8 19.Rg2 Qa6 20.Rbg1 Qxa2 21.Ne4
Nxe4 22.fxe4 Qxc4 23.Qf3 Raf8 24.Qf4 cxd4
25.cxd4 Qc7 26.Rg4 Qe7 27.e5 dxe5 28.dxe5 f5
29.Rg6 Qf7 30.Qf3 a5 31.h4 Rb8 32.h5 Qb7
33.Qxb7 Rxb7 34.Rxe6 b5 35.Rd6 b4 36.Rgd1 b3
37.e6 b2 38.Rb1 Rc8 39.e7 Rc1+ 40.Rd1 Rxd1+
41.Rxd1 Rxe7 0-1

White, Gary (2057) - Smith, Frank (1657) [A25], Christmas Tree Open, 30.12.2006

1.c4 e5 2.g3 Nc6 3.Bg2 Bc5 4.Nc3 Nf6 5.a3 0-0
6.b4 Be7 7.Bb2 d6 8.e3 Nb8 9.Nge2 c6 10.d4
Nbd7 11.0-0 exd4 12.Qxd4 Qb6 13.Rac1 c5
14.bxc5 Qxb2 15.Nd5 Qxe2 16.Nxe7+ Kh8 17.f3
dxc5 18.Qc3 Re8 19.Rf2 Qxf2+ 20.Kxf2 Rxe7
21.Rd1 b6 22.h4 Bb7 23.Rd6 Rae8 24.e4 Ne5
25.a4 Ba6 26.Bf1 Nxf3
27.Rxf6 Ne5 28.Rf4 Bb7
29.h5 Bc8 30.Be2 h6 31.a5
f6 32.axb6 axb6 33.Qb3 Nf7
34.Qxb6 Ng5 35.Kg2 Nxe4
36.Bd3 Ng5 37.Rf2 Bb7+
38.Kh2 Ba8 39.Qxc5 Re1
40.Rf1 Nf3+ 41.Kh3 R1e5
42.Qc7 Ne1 43.Rxe1 Rxe1
44.Q7 Bf3 45.g4 R1e3
46.Kh2 Ra8 47.c5 Rxd3
48.Qc4 Rad8 49.c6 Rd2+
50.Kg3 R8d3 51.Kh4 Bxc6

52.Qxc6 Rh2# 0-1

Smith, Frank (1685) - Luther, Ron (2247) [D71], KC Open (4.1), 18.02.2007

1.c4 Nf6 2.Nc3 d5 3.d4 g6 4.cxd5 Nxd5 5.g3 Bg7
6.Bg2 Nxc3 7.bxc3 0-0 8.Bf4 c5 9.Nf3 Qa5 10.Qd2
Rd8 11.Bxb8 Rxb8 12.e3 e5 13.0-0 cxd4 14.exd4
exd4 15.Qf4 Be6 16.cxd4 Rbc8 17.Rfd1 Rc2
18.Ne5 Rxa2 19.Rxa2 Qxa2 20.Bxb7 Qb3 21.Qf3
Bxe5 22.Qxb3 Bxb3 23.Rb1 Bd5 24.Bxd5 Rxd5
25.dxe5 Rxe5 26.Ra1 a5 27.f4 Rd5 28.Kf2 Kf8
29.Ke3 Ke7 30.Ke4 Kd6 31.h4 f5+ 32.Ke3 Kc6
33.Rh1 a4 34.Ra1 Kb5 35.Rb1+ Ka5 36.Ra1 Rd6
37.Ke2 Kb4 38.Rb1+ Kc3 39.Rb7 h5 40.Rc7+ Kb2
41.Rb7+ Ka2 42.Ra7 a3 43.Rb7 Ka1 44.Rb3 a2
45.Rb5 Ra6 46.Rb3 Re6+ 47.Kd2 Ra6 48.Kc2 Rd6
49.Rb5 Rd4 50.Rb3 Re4 51.Kd2 Re6 52.Rb5 Ra6
53.Rb3 Ra4 54.Kc2 Re4 55.Kd2 g5 56.hxg5 h4
57.gxh4 Rxf4 58.h5 Rg4 59.g6 Rg5 60.Rh3 Rg2+
1/2-1/2

2007 Kansas City Open Report

Open Section

No.	Name	Rate	Pts	Rnd1	Rnd2	Rnd3	Rnd4	Rnd5
1	Luther, Ronald	2247	4.5	W12	W7	W5	D2	W6
2	Smith, Frank H	1685	3.5	D4	W6	W8	D1	D3
3	Gaul, Thomas J	1806	3.5	W9	L5	W7	W4	D2
4	Conklin, Spencer L	1428	3.0	D2	W12	-H-	L3	W10
5	Hochee, Michael V	1658	2.5	W14	W3	L1	L6	D8
6	Cogley, Mark A.	1892	2.5	-H-	L2	W9	W5	L1
7	Spies, Bob	1750	2.5	W10	L1	L3	-H-	W9
8	Holmes, Daniel	1559	2.5	-H-	W11	L2	D9	D5
9	Walker, Timothy M	1612	1.5	L3	W10	L6	D8	L7
10	Horton Jr, Stanley	1591	1.5	L7	L9	W14	-H-	L4
11	Dutiel, Tony	1803	1.5	-H-	L8	L12	-U-	-B-
12	Heimbaugh, Michael	1615	1.0	L1	L4	W11	-F-	-U-
13	Smith, Fred A	802	0.0	L5	-U-	L10	-U-	-U-

Reserve Section

No.	Name	Rate	Pts	Rnd1	Rnd2	Rnd3	Rnd4	Rnd5
1	Ciccio, Joe	1362	4.5	W5	W4	W3	D2	W6
2	Williams, Kent	1315	2.5	-H-	L3	W5	D1	D4
3	Forbes, Todd R.	1206	2.5	L4	W2	L1	W4	D5
4	Conklin, Joe	1442	2.0	W3	L1	-H-	L3	D2
5	Asher, Leroy E	1127	2.0	L1	W6	L2	-H-	D3
6	Smith, Fred A	802	0.0	-N-	L5	-N-	-U-	L1

Enjoy good chess,

Ken Fee

Editor,

Missouri

Chess Bulletin

Missouri Chess Association Call for Nominations

As a Missouri Chess Association member you are invited to submit nominations for the annual election of members of the MCA board of directors. Nominees must be residents of the state of Missouri and current members of the MCA. If elected, nominees would serve a one-year term beginning on September 1, 2007. Self-nominations are welcome and encouraged. Members would be expected to attend Board meetings held in Columbia (currently three times per year) and the general membership meeting at the Missouri Open in September, 2007. The deadline for nominations is May 1, 2007. Election ballots will be mailed by June 1 to MCA members in good standing as of May 1, 2007. Send your nominations to: Jim Davies, Election Commissioner, 7358 Shaftsbury Avenue St. Louis, MO 63130 or email them to jadaviesathome@msn.com.

MISSOURI CHESS ASSOCIATION BOARD OF DIRECTOR'S MEETING

The Minutes of February 4, 2007

The Meeting was convened at 11:32 a.m. at the University of Missouri, Memorial Union Commons in Columbia, Missouri.

Members Present: Ed Baur, Bill Wright, Ken Fee, Thomas Rehmeier, Bryon McLaughlin, and Bob Howe. This was a quorum for business. Mike Clark joined the meeting in progress at 11:44am.

Members Absent: Wayne Bartlett and Tony Rich.

First Order of business was setting the date for the next Board of Director's meeting. The date and time of May 6th, 2007 at 11:30 p.m. was agreed. The date of May 20th was selected as the backup date.

The Minutes of the October 1, 2006 meeting were unanimously approved 5-0. B. Howe abstained.

Bill Wright presented the Treasurer's Report. The MCA checking account balance on January 31st, 2007 stood at \$2,713.86. This compares to a balance of 3,440.11 on August 31st, 2006. Bill noted that the balance is affected by a \$100 deposit that has been placed for the St. Louis Open which will be returned. Bill confirmed that Ken Fee has been added to the MCA checking account with Commerce Bank. Ken motioned to accept the Treasurer's report. Ed Baur second's. The motion is approved 6-0.

Next order of business was the membership report. Wayne Bartlett has assumed the role of Membership chair in place of Charlie Ward, however, Wayne was absent from the meeting and no report was available. Ken Fee suggested future membership reports include a breakdown of types of memberships rather than just a current total number of members.

Old Business:

1. Website:

The acting webmaster, Charlie Ward, has resigned since the last board meeting. Tony Rich has assumed that duty with assistance from the web Committee.

The board continued discussion on whether to add advertising to the MCA website. Discussion about this topic included debate over whether MCA and non MCA members would be treated differently. Also discussed was the question if such advertising was intended to focus on providing a service to MCA members or intended to be a revenue generator. The potential for legal liabilities was also discussed, with Ed suggesting Milt Garber be consulted on any decision made. Discussion was tabled to allow for Tony Rich to present his proposal on the issue.

The next web topic that was discussed was upgrading the front page of the MCA Website. Ken would like to see the page include a clear link to the MCA bulletin and a section for up to date content (i.e. chess base). Thomas pointed out the popularity of the current site among members with which he has talked. No specifics were set but numerous ideas were considered. The web committee will work on this.

Ken Fee informed the board that the new web server is available, but no one was sure if the change over has been accomplished. Tony would be asked about this issue.

The final web issue was the desire to set up a forum on the MCA website. The idea was viewed favorably but

at this time was shelved due to security issues.

2 Bank Account Issues:

Ken motioned to establish that the President and Treasurer should both be on the MCA checking account. Ed Baur seconded. The motion was approved 7-0

The board then discussed the proposal for the treasurer to provide all board members with copies of bank statements. After discussing the purpose of this proposal and considering the information available in bank statements, Ed Baur suggested a better solution was the Treasurer provide an annual report showing the breakdown of income and expenses. This would be provided at the October meeting each year, or the first meeting after the Association's fiscal year ending on August 31st.

Ken motioned for the Treasurer to provide an annual report at the October meeting. Ed Baur seconds. Approved 7-0.

3. MCA Goals:

Ken and Ed discussed efforts of increasing membership through the KC scholastic program and the upcoming state tournaments. This has produced some unexpected revenue along with increasing MCA numbers.

Getting old issues of MCB's put on the website was discussed. The option of scanning the documents versus recreating the most relevant documents in a new format were considered.

Ed Baur raised the issue of the 6th qualifying tournament for the MO State invitational. Ed and Bill are running the tournament this spring, but Ed believed next cycle the tournament should represent a different part of the state. He suggested the Jefferson City Open was a good location for it. Thomas agreed to run the event for several years in the future. Mike Clark brought up Springfield and felt it was a better location for the last qualifier. This idea was debated. Suggestions for getting Springfield involved in the next qualifying cycle included moving the MO Class Championship to Springfield in 2008, or eliminating the qualifying spot from the Class Championship, and replacing with a separate Springfield tournament. Some board members felt that Open tournaments were better suited as qualifiers than the Master/Expert section of the Class, but no final decision was made.

Ken Fee proposed the Jefferson City Open be awarded a qualifying tournament status for the 2008 cycle. Thomas seconded. The motion passed 6-1, with Mike Clark opposed.

The next issue was the proposal for the Board to create an annual budget. Bill Wright presented a worksheet titled "Factors to be used for creating a budget". This gave the board a breakdown on estimated expenses and incomes for the coming year. This worksheet was very helpful for giving the board a starting point on creating an annual budget.

The issue of making chess an official MSSHAA activity was then discussed. There are several potential problems with this proposal, including the possibility of the chess state titles being divided between private and public school divisions, and the potential of players who win money in adult tournaments losing eligibility to play in scholastic tournaments.

The Denker and Polgar qualifying tournaments were discussed. Ed intends to run these as a single tournament, but it has not been published so is still open to change. Ken pointed out that there were some younger than high school age students who would like to compete for these titles. The Denker tournament is known to be open only to High School age, but the Polgar was believed to be open to any age. Qualifying for these will be reviewed later for potential changes for next year.

4. Tournament Schedule:

The St. Louis Open and the 2nd St. Louis Qualifying tournament, the Spring Open Region 1 were confirmed for the dates April 28,29 and March 31, April 1 respectively.

The Missouri Class Tournament is scheduled for July 14th-15th. With Charlie Ward's resignation, Bob Howe and Thomas Rehmeier have agreed to take over running this event.

The Missouri Open is set for Sept. 29th/30th. With Charlie Ward's resignation, Ken Fee has agreed to take over running this event in Columbia Mo.

5. MCB:

Ken Fee made a call out to all directors to contribute material for the bulletin. The latest bulletin is relying on contributors seeking compensation for their material. If all board members made small contributions for each issue it would greatly benefit the publication.

Interest in creating a Chess league or match between regions and bidding on National Events was discussed but tabled for a later time.

New Business:

The Board began new business by discussing the proposal to add a Family Membership option. Several discount options were considered and debated. After discussion, Ken proposed the following:

- Family Membership, - With Print version (1 copy per family) \$18
- Family Online Membership, - Online MCB \$10
- Scholastic Family Membership - Print version (1 copy per family) \$12

The MCA will use the same definitions for family memberships as the USCF.

"Family" is defined as both parents and all children under the age of 25, provided they are living at the same address. Also included are full time college students up to age 24, regardless of address.

"Scholastic Family" is defined as all children under 25 in the family who are living at the same address.

Ed Baur seconded the proposal. Approved 7-0

Ken Fee had some questions about the MCA's Federal non profit status. The MCA doesn't appear in some internet listings that other Non-profit organizations are found. Bill Wright has spoken on several occasions to the IRS, but Ken's advice from a CPA seems to contradict this. Both Ken and Bill agreed to look further into this.

Adding the ability for Board members to vote via forum or E-mail in place of snail mail was discussed, but tabled for a later date.

Bryon McLaughlin brought up the need to get more input from members on what the MCA can do to help them. The suggestion was made to include a survey in the next edition of the MCB.

Ed Baur reminded the board of the need to be prepared for the next election. A call for nominations should be included in the next edition of the MCB. Deadline for nominations is April 15th. Nominations should be sent to Jim Davies.

Ken motioned to adjourn the meeting, Ed seconds. Meeting is adjourned at 2:14 pm.



THE WESTPORT CHESS CLUB

BY TONY DUTIEL

E-MAIL: THEGAMBIT@MAIL.COM

Located at the Westport Flea Market in the heart of Kansas City on Westport Dr, the Westport Chess Club meets on Tuesdays from 6:30 p.m.-11p.m. You can find 10-25 players of all skill levels and ages. We have regular retired player such as Arno Barnetzki and young players such as Sarah and Daiki Sampi. Skill levels range from beginners all the way up to International Master Michael Brooks. One can find a variety of games from speed chess & bughouse, to games played without a clock. The dues are only \$1 for students (including College) and \$2 for adults. The first visit is free for everyone. The Flea Market sells beverages from soda to beer. Food is also available. They give chess players a good price break on a combo with a cheeseburger and fries for under \$4.

Many club members compete actively in chess tournaments. In the recent Missouri Open Championship, about half of the Westport regulars played. And represent we did, sweeping nearly every section. IM Michael Brooks tied for 1st in the Missouri State Invitational Championship with Ron Luther. Francis Crow had a terrific performance in the Missouri Open winning sole 1st including wins over master Thomas Gossell and experts Tim Steiner and James Davies. Nick Manley swept the 33 player Reserve (U1600) field 5-0 winning \$150. My partner Frank Chressanthis and I tied for 1st winning the title over Nebraskans Sean Baker and Doug Grande in the Bughouse State Championship. We finished four games ahead of the rest of the 11 teams. It will be hard to top the overall dominance of the Westport Chess Club in future tournaments.

Gene Bates directs various rated and non-rated tournaments including many FREE G/10 rated, G/30 one game a week, and my personal favorite, end of the month tournaments held on the last Tuesday of every month. The format is: \$5 EF 4-SS G/10. What I like best about these tournaments is that it is clock move, not touch move since it is non-rated. (Just like in blitz.) Also, there are cash prizes based on your final score with each player earning \$2.50 for every game they win. It is highly popular as it gives the games a competitive edge, and usually over half the field gets their entry fee back.

In addition to tournaments there is a club ladder. In it, all club players are ranked in order of skill with 1 being the best. You can challenge people above you within 10 rungs for their ladder spot. These games can be rated or non-rated with any time control both players agree on as long as it is at least G/30. Unfortunately, we have so many G/10 tournaments, ladder games are infrequent. But, you can challenge anytime both are present. When I moved here about a year ago, I challenged and beat Ray Burt for the #2 spot, and have defended it several times including a win over Nick Manley. I have challenged John Crooks for the #1 spot twice with the first game ending in a draw (High rank retains rank on draw.) and a loss in the second game.

All and all, the Westport chess club offers something for everyone interested in playing chess or chatting with fellow chess players and friends while enjoying a drink.

A GEM, A SHOCKER, AND A LITTLE LADY

BY TIM STEINER

E-MAIL: TIM@MIDWESTCHESS.COM

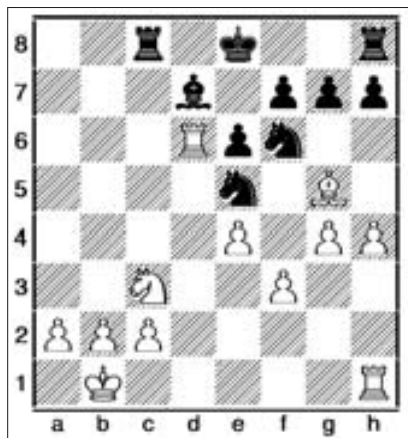
Jones, Ken (2304) - Steiner, Tim (2006)
[B67], KC Masters The Chess Club,
12.01.2007

I really appreciated my game with Ken Jones. Not because I was the victor but because it was hard fought and interesting. It was tense struggle right up until move 40. Had I lost the contest I would have viewed it the same way. I also savored the game because last year at the KC Masters, Ken and I were unable to play a meaningful game, as the standings had already been determined by the penultimate round. You will notice I don't spend much time providing computer analysis. Any monkey with a computer can generate their own. The true test of annotations is to learn something about the game from a unique perspective; through words and thoughts and emotions - not analysis.

1.e4 c5 2.Nf3 d6 3.d4 cxd4 4.Nxd4 Nf6 5.Nc3 Nc6 6.Bg5 Richter Rauzer. By far the most common response by players over 2000.

6...e6 7.Qd2 a6 8.0-0-0 Bd7 9.f3 Rc8 10.Kb1 Be7 11.g4 Not considered the main line, but by no means unplayable. I wonder if Jones deviated on purpose or was in perhaps new territory. 11...Qc7 12.h4 b5 13.Bxb5?! This is where the game goes off the 4-lane highway. I have seen this manoeuvre many times before usually against a Najdorf. The games are quite tactical and usually somebody wins or loses. I don't think it's been proven which color has the better odds. However, this position is slightly different from the positions it is supposed to occur in. Here are a couple of reasons why: Black is not castled (the king helps protect vital squares like d7), and Black has practically completed his development. If

it weren't for these two factors I would say White's idea is justified. 13...axb5 14.Ndx5 Qb8 15.Nxd6+ Bxd6 16.Qxd6 Qxd6 17.Rxd6 By no means has Black achieved a strategically won position due to White's misstep on move 13. If all the pieces were to be traded off, it would be very hard indeed for Black to stop 3 connected passers. 17...Ne5! Diagram

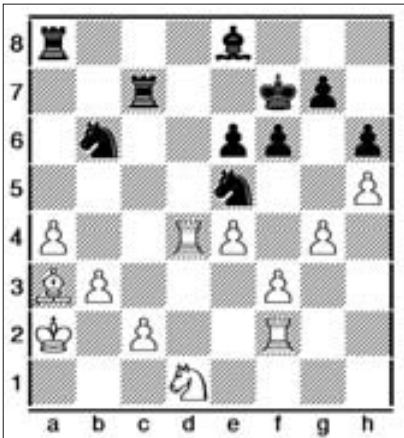


Instinctively knew this was the right move. And it did prove to be a key move. However, I made the move for the wrong reason. I play Ne5 so I could free my bishop and prevent White's knight from invading on b5. But as self evident it also attacks the white pawn on f3. Now I thought it would be only a matter of a few moves before White would be able to free up that rook and the knight on e5 would have to go look for another home. Little did I realize that was easier said than done. It was the threat that for much of the rest of the game tied down White's rook and kept White's position somewhat passive. 18.Rf1 Bc6 19.h5 h6 20.Bf4 Nfd7

21.b3 Ke7 I think this was also one of the key factors that Black's king was active. White's penetration is gone down the only open file he has accessible. Furthermore, if he plans to double, Black can easily trade off the rooks, which will benefit Black since his king is closer to the endgame action.

22.Rdd1 f6 A useful move. Used for overprotecting the e5 knight so the d7 knight can leave and also provides a cubby hole for the king in case he needs a few extra squares to flee. **23.Bc1 Ra8 24.a4 Rhb8 25.Ba3+ Kf7** I had a 24 minute lead at this point. This is still an equal game. **26.Ka2 Rb7! 27.Rd6 Rc7**

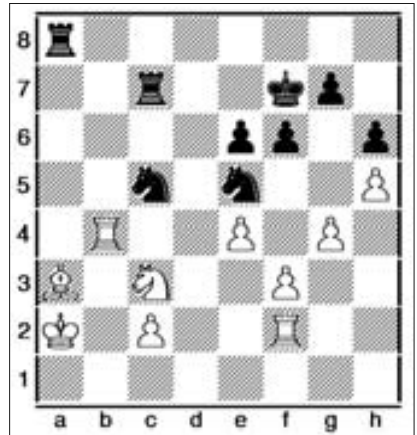
28.Rf2 Nb6 29.Rd4 I thought this move gives Black a clear initiative. The momentum has now fully swung to Black. [29.Nb5 Perhaps White's last opportunity to stifle Black's initiative. Besides, this White knight had some real issues later on finding a home. 29...Bxb5 30.Rxb6! Ba6=] **29...Be8 30.Nd1** Diagram



30...Bxa4 Mathematically, not the best continuation. However, what I have learned over the years is that in the Sicilian you must always strive to find the most complex and difficult defensive assignments for your opponent. Those positions will typically re-

ward the attacker. I felt the marauding knight would have been more difficult to deal with than the predictable bishop. [30...Nxa4 31.bxa4 Bxa4-/+ Yes, you are correct. Fritz does indeed enjoy proving my opinions wrong.] **31.bxa4 Nxa4 32.Kb3?!** I can understand this move from White. It may have even been a move I would consider for myself. But from a practical point of view, the king is fighting naked against open files, rooks and a deadly knight. White is fighting for his life though. [32.f4! And this was the final opportunity for White to save the game. A draw is still very much within White's grasp, but the positions will require precision for that to happen. The knight must be evicted. 32...Nxb3-/+] **32...Rb8+ 33.Rb4** My opponent had 4 minutes left on the clock and I had 9. [33.Ka2] **33...Nc5+!** Not a hard move to find, but necessary if Black wants to retain the initiative. **34.Ka2** White is doing well finding the best defensive moves. **34...Ra8!**

35.Nc3?! Diagram



Here's that troublesome knight again. [35.f4 Nxb3-/+] **35...Ncd3** After the game, people commented on the strength of this move. This is certainly an effective move, but it is not special or particularly hard to find. The

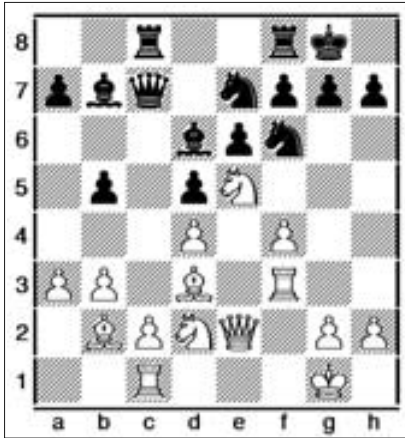
problem for White is in addition the knight on c3 is attacked too. **36.cxd3 Nxd3 37.Nb5 Nxb4+** only move **38.Kb3 Nd3!** Black has done an outstanding job of walking the tightrope. White has layed tactical landmines all throughout his defense. **39.Rd2?!** [39.Nxc7 Best for White but the ultimate conclusion is more clear. 39...Rb8+ 40.Kc4 Nxf2-+] **39...Rb8 40.Ka4 Nc5+** Wow, I couldn't believe it. It was over. I expected Ken to continue fighting, but no more traps could be built. What a tense struggle. Ken was a real gentleman after the game too. He is probably justified in feeling upset as I am not in his category of skill (and may never be). I look forward to our next match. I'm sorry it had to be Jones on the day I played a near flawless game (which doesn't happen too often in life). Only with great opponents can you have great games. **0-1**

**Bruzon,L (2652) - Anand,V (2803) [D05]
XIX Ciudad Leon ESP (1.5), 09.06.2006**

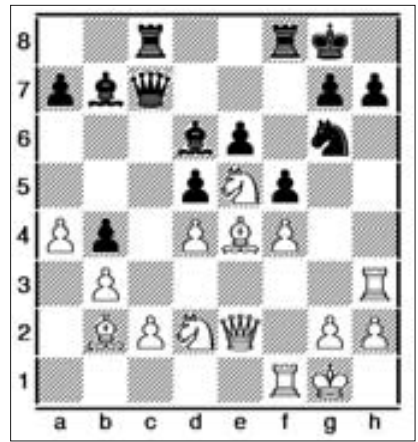
As a scholastic and adult chess trainer, I have always come to believe that the last thing you teach a student about is the opening. I myself am a product of my own philosophy. It is quite easy to become an 1800 without knowing a shread of theory. But alas, as my students became stronger, it becomes necessary to equip them with just a few pearls about opening theory. I do have more than a few students who are very shy when it comes to tactics and their personalities to do not mesh with tactics as such. No worries. Chess is big enough for those slower, positional players. It took me quite a while to conceive of a strong, slow, positional opening with the white pieces that avoided lots of theory. I was leafing through a C.J.S. Purdy book one day and the idea came storming in. The Colle-Zukertort. It

is far more aggressive than the Colle and is not subjected to the positional pitfalls of the imprisoned dark-square bishop that so often befalls the normal Colle (or Koltanowski Colle if you will). Now any decent Expert or Master has probably reviewed this next game and had special feelings towards it. I know for a fact this game was reviewed by many a strong player. In the week after its release through Chessbase or TWIC, a very strong tournament took place in Oklahoma. I've reviewed the games from that event and I saw no less than 7 games with the Colle-Zukertort. White had surprising success. Here it was, a club opening, making its way into the repertoires of strong Experts and Masters. It was no doubt due to the game below. Is it any wonder why Susan Polgar has released a video on this very opening. Too late Susan, as I've been teaching this for a while. **1.d4 Nf6 2.Nf3 e6 3.e3 d5 4.Bd3 c5** Black has chosen a very solid and common setup. **5.b3 Bd6 6.0-0 0-0 7.Bb2 Nc6 8.Nbd2** [8.dxc5 Bxc5 9.c4 This is a better variation for White. It is little known that in this variation the b1 knight belongs more on c3, not d2.] **8...cxd4 9.exd4 b6 10.a3 Bb7** So far, so good for Black. He has achieved a middlegame position without White having any hint of an advantage. **11.Ne5 Qc7 12.Qe2** [12.f4 Objectively stronger for the long term. You have to make way for the rook lift as quick as possible.] **12...Ne7** Either of the two options below would be stronger moves. But now Anand attempts to relocate an already well placed knight. Why? Anand is obviously trying to win and prove he can crush this club opening. Bruzon is no slouch, but opinions would indicate he's not in Anand's league. [12...a5; 12...Rfc8] **13.f4 b5 14.Rf3** My gut feelings agree but perhaps a bit hasty or

cavemanish. [14.c3+/= White needs to take it slow and let Black decide where he wants to put the e7 knight.] 14...Rac8 [14...a5 15.Rh3 Ng6= White will definitely get an opportunity to knock on the door, but probably will not be let in.] **15.Rc1** Diagram



Here we have reached a critical juncture in the game. Black needs to choose his plan wisely here. White has a latent ability to use his space if given enough time. **15...b4** Black is still thinking offense rather than defense. **16.a4?!** White lost much of his initiative here. [16.axb4 Bxb4 17.c3 Bd6 18.Rh3 White has a nice, tight attacking package.] **16...Ng6 17.Rcf1 Ne4** A standard move. It seems Black is content with a draw. [17...Nh4 18.Rh3 Nf5 a pretty relocation] **18.Rh3 f5?!** I think Anand felt this was a rock-solid structure and that with the center completely locked up White's attack was going nowhere. However, Black has created some weaknesses around his king that we see Bruzon capitalize on. [18...Nf6=; 18...Be7=] **19.Bxe4!** Diagram

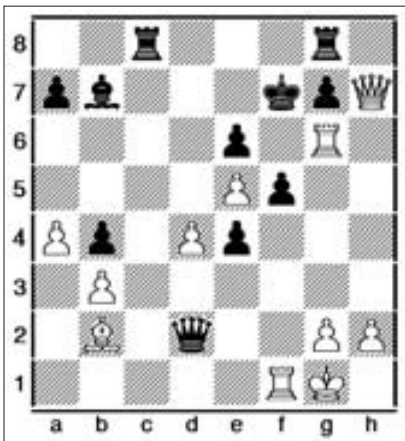


This dead bishop is not needed any longer. And here you have the other critical moment in the game. Five options for Black here.

19...dxe4? And wouldn't you know it... Black selects the worst of the options. Haven't we all done this in a game before? It seems like Black played the right move, trying to liberate his b7 bishop and all. The problem is that Black just doesn't have enough time. [19...Bxe5 20.dxe5 fxe4 21.Qh5 Kf7 22.f5 Qb6+ 23.Kh1 exf5 24.e6+ Qxe6 25.Qxh7 Ne7 26.Bxg7 Qg6 27.Bxf8+ Qxh7 28.Rxh7+ Kxf8 29.Rh8+ and apparently we have an equal game. What a variation. Who could blame Visly for not wanting to calculate that one out. The slightest misstep by Black was going to cost him the game. This really was Black's best option. Who said the Zukertort was dull?; 19...Nxe5 20.fxe5 fxe4 21.exd6 Qxc2 22.Rb1 With a slight edge to White. If White can manage to get stuff traded off then his extra piece will be the difference.; 19...fxe4 20.Qh5 h6 21.Qxg6 Rf6 22.Qh5 Qxc2 With a slight edge for White again, but still lots of play in this position; 19...Nxf4? Not the greatest, but I suppose worth examining as a candidate move. 20.Rxf4 fxe4 21.Rxf8+ Rxf8 22.Nf1 With a nice positional bind and generous

use of space on the kingside. It's only a matter of time before White coordinates his advantages.] **20.Qh5 Bxe5 21.fxe5 Qxc2?** Anand is still playing offense when perhaps a little defense was needed. But don't we agree with Anand? Why sit back and defend a miserable position when we can perhaps complicate the position. **22.Qxh7+ Kf7 23.Rg3 Qxd2?** You now have to start wondering if Anand is playing bad moves on purpose to help Bruzon put him out of his misery. [23...Qxb2 24.Qxg6+ Ke7 25.Qg5+ Kd7 26.Qxg7+ Kc6 27.d5+ Kb6+- (Fritz 10: 27...exd5 28.Qh6+ Rf6 29.Qxf6+ Kc5 30.Nxe4+ Kd4 31.e6+ Kxe4 32.Re1+ Qe2 33.Rxe2+ Kf4 34.Qh6# #7/7)]

24.Rxg6 Still the only move to keep the win locked up for White. [24.Qxg6+? Ke7+/=] **24...Rg8** Diagram

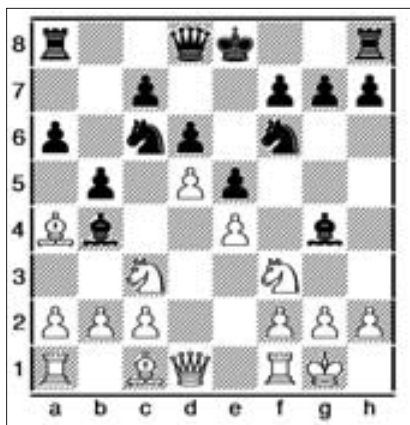


25.Rxe6!! Quite thematic. When you have your opponent on the ropes look for knock-out punches. They are usually hidden as tactical sacrifices. This will lead me to the next game example. **25...Kxe6 26.Qxf5+ Ke7** [26...Kd5 27.Qd7#] **27.Qf7+ Kd8**

28.e6 Correctly ignoring the free bishop. The position is absolutely hopeless for Black. **28...e3** I wonder if Anand had a little smile on his face when he played this. It's the closest he's been all game, but the game was already over. I want you to please take note over the critical positions. These can be crucial to helping one realize the essence of a position. You can check with Dorfman or Kasparov if you want to argue. The rook sacrifice on e6 brought a smile to my face. I can't stress enough how important it is to be able to find moves like that. And finally... Did Anand get beat by Bruzon or did he misjudge the stability of the opening? I am leaning towards the latter. When's the last time you saw a legend get beat in a convincing fashion in under 30 moves. It's probably been 25 years since Anand felt something like that. **1-0**

Sampei, Sarah (1171) - Zhou, Daniel (1205) [C77] (3), 06.01.2007

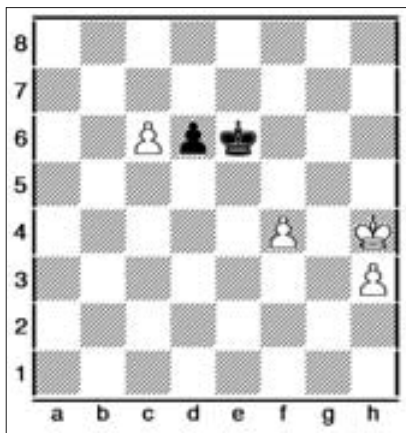
It's a rare day when I attend a scholastic event and witness a really well played game by both players. They are juniors... what more can I say. However, not a long time ago I reviewed a game of one of my students and it had 2 really interesting positions. This was a knock-down, drag-em out fight between some very good scholastic players in a K-5 section. Daniel Zhou has won many a tournaments on the Kansas side and Sampei (my student) has done the same on the Missouri side. **1.e4 e5 2.Nf3 Nc6 3.Bb5 a6 4.Ba4 Nf6 5.Nc3 Bb4 6.0-0 d6 7.d4 Bg4 8.d5 b5?** Diagram



9.Nxb5!! This was of course the refutation. Now, to a 1400 player and above this might seem like an obvious move or at least easy to find. However, were talking about kids and kids that are 1200. It's not the same dimension as you and I. This was an amazing move under the circumstances. In fact, this move alone was the strongest reason that White won this game. Yes, on move number 9. White had the correct interpretation of the tactics at hand. White realized she had an absolute pin and could afford to be aggressive with her knight. Way to go!

9...axb5
10.Bxb5 0-0 11.Bxc6 Nxe4 12.h3 Bxf3
13.Qxf3 Ng5? 14.Qg4 Again, the correct follow up. Pieces are en prise all over the place for Black.
14...Rb8 15.Bxg5 f6 16.Bh6 Rf7 17.Be3 f5 18.Qg5 Qxg5 19.Bxg5 f4 20.a3 Bc5 21.Bh4 h6 22.b4 Bd4 23.c3 Bxc3 24.Rac1?! Bd4 25.g3?! g5 26.gxf4 gxh4 27.fxe5 Bxe5 28.Ba4?! Rf3 29.Kg2 Rxa3 30.Bd7 Ra7 31.b5 Bf4 32.Rce1 Be5 33.f4 Ra2+ 34.Kh1 Bc3 35.Re7 Correct. A hog on the 7th.
35...Bf6?! 36.Be6+! A nice little tactical shot that pays dividends.
36...Kf8? 37.Rf7+ Ke8 38.Rg1 White's pushing her luck here, but still naturally instinctive threatening the mate on g8.
[38.Rxf6; 38.Rxf6] 38...Ra1 39.Rxf6 Rxc1+ 40.Kxc1 Rxb5 41.Rxh6 Rb1+ 42.Kf2 Rb2+ 43.Kf3 Ke7 44.Kg4 Re2 45.Kxh4 c5 46.dxc6 Rxe6! A nice try, but it won't work.

47.Rxe6+ Kxe6 Diagram



This looks like a position out of some endgame book. I've seen lots of kids ruin positions like only to have a draw. This might be simple to you and I, but these are young scholastic players. Quite sophisticated they are. This position is practically won any way you slice it, because of the separation between the two white pawns. This is an endgame secret. However, if White isn't careful... if she drops the c-pawn and then Black gets his king in front of the f-pawn then it will likely be a draw. By the way, when you work with me as your instructor, you will be taught how to play similar positions. Not all coaches teach the endgame.
48.c7 [48.f5+ works too] **48...Kd7 49.f5 d5 50.f6** [50.c8Q+ Kxc8 51.f6? See how this position can turn bad? The Black king will have enough time to step in front of those passers and this will be a draw.] **50...Kxc7 51.f7 d4 52.f8Q Kc6 53.Qf3+ Kc5 54.Kg3 Kc4 55.Kf2 d3 56.Ke3 Kc3 57.Qd1 d2 58.Qxd2+ Kb3 59.h4 Kc4 60.h5 Kc5 61.h6 Kc6 62.h7 Kc5 63.h8R Kc6 64.Rc8+ Kb7 65.Rc1 Kb8 66.Qb2+ Ka8 67.Ra1#** Excellent technique by Sampei. Girl power!!! To inquire about lessons with Mr. Steiner, please contact him at (913) 638-7707, tim@midwestchess.com or go online and view his website at www.midwestchess.com. **1-0**

2007 Missouri Open & Invitational

Sponsored by the Missouri Chess Association

Where: Days Inn Conference Center Columbia 1900 I-70 Drive SW I-70 & Stadium Blvd
Columbia, MO, 65203 US Phone: 573-445-8511.

Hotel Information: Use Group Code: MOSC - Chess Rate \$69.99 (1-4 people per room)
Complimentary Hot Breakfast! Exit 124 on I-70 behind ToysRUs.

Two Sections: Open Championship Section and Reserve Section U1600. Any player can
play in the Open section!

Membership: USCF Membership required. MCA membership required for MO residents,
available at site for \$5. OSA okay

Date: Saturday and Sunday, September 29th-30th, 2007

Registration: 8:00-9:00 Round One 9:30

Rounds: Five Rounds – Game 120

Round Times: Saturday 9:30/2:00/6:30 and Sunday 9:00/1:30 Sunday Membership
Meeting 8AM

Entry Fee: \$39.00 per player (Pre-registered by September 24th PAYPAL to
chessclub@powerpawn.net online or mail) \$50.00 (On Site.)

Entries: Mail entries to Kenneth Fee 1537 Baker Street, Liberty, MO 64068 Make checks
out to the Ken Fee. Or PAYPAL entry fee to chessclub@powerpawn.net Info: 816-835-
7529

Prizes: Invitational Section 1st \$300 /Open Section 1st \$150 each MX, A, B. Reserve Sec-
tion, 1st \$150 each C, D, E, U1000. Open winner earns a spot in 2008 Invitational.

Byes: One half-point bye available for any round. Must notify TD before tournament.

Organizer: Ken Fee

Tournament Director: Wayne Bartlett



2007 MISSOURI SCHOLASTIC CHAMPIONSHIPS

JEFFERSON CITY, MO

Three Scholastic Championship Tournaments were held at Lewis and Clark Middle School in Jefferson City. First, The Missouri Senior High Chess Championship took place February 24th. Ed Baur with his team of computer operators and floor help directed another well run event. Ed, from St. Louis has been running the scholastic championships for the last twenty years and should be congratulated for a job well done!

And finally, The Missouri State 9-12 Boys and Girls Tournament of Champions was played on March 4th to determine Missouri's representatives in the National Denker and Polgar Championships. Eleven players played for the chance to represent Missouri. Both the Denker for boys and the Polgar for girls is held each year. One representative from each state plays in the national event.



Cross Table – 2007 Polgar and Denker Championship

No.	Name	Gr	Pts	TBrk1	TBrk4	Rnd1	Rnd2	Rnd3
1	Karlow, Nick	10	3.0	5.0	6.0	W4	W7	W3
2	Severance, Tyler	12	3.0	3.0	6.0	W9	W8	W7
3	Schlosser, Brad	9	2.0	5.0	5.0	W11	W5	L1
4	Berry, Kyle	11	2.0	4.5	3.0	L1	W10	W8
5	Tyre, Taylor	10	2.0	3.0	3.0	-B-	L3	W9
6	Butcher, Tess	9	1.5	1.5	1.5	L8	-B-	D11
7	Rehmeier, Thomas R	11	1.0	6.5	3.0	W10	L1	L2
8	Horak, Susan	9	1.0	6.0	3.0	W6	L2	L4
9	Richmond, Christopher	11	1.0	5.0	2.0	L2	W11	L5
10	Siddiqui, Mohammed	9	1.0	3.0	0.0	L7	L4	-B-
11	Beasley, Curtis J.	11	0.5	4.0	0.5	L3	L9	D6

2007 Missouri Junior High/Elementary Chess Championship

Winners (Teams)

- 9th and Under Division

Rockhurst HS, Kansas City, MO



- 8th and Under Division
Ladue MS, St. Louis, MO (2 in a row)

- 6th and Under Division (co-champions)
Chesterfield Day ES, Chesterfield, MO (2 in a row)
McKinley Classical Junior Academy, St. Louis, MO



- 5th and Under Division
The Pembroke Hill School, Kansas City, MO



**The Pembroke Hill School
with Coach Tim Steiner**

Winners (Individuals)

- 9th and Under Division
Jake Amann, Rock Bridge HS, Columbia, MO

- 8th and Under Division
Henry Cao - Parkway Central MS, Chesterfield, MO

- 6th and Under Division (co-champions)
Isaiah Gadson, Central Christian ES, St. Louis, MO
Rio Pimentel, McKinley Classical Junior Academy, St. Louis, MO

- 5th and Under Division (co-champions)
Kevin Cao, Shenandoah Valley ES, Chesterfield, MO (2 in a row)
William Tong, Pierremont ES, Ballwin, MO (2 in a row)

2007 Missouri High School State Championship Results

Winners (Teams)

- Parkway Central HS, St. Louis, MO
- Clayton HS, St. Louis, MO



Winners (Individuals)

- Board 1 - Nick Karlow, Valley Park HS, Valley Park MO
- Board 2 - Josh Morris, Parkway North HS, St. Louis, MO
- Board 3 - Christopher Richmond, Parkway South HS, St. Louis, MO
- Board 4 - Mohammed A K Siddiqui, Parkway Central HS, St. Louis, MO

IMPROVING MISSOURI CHESS

BY MIKE CLARK

E-MAIL: SPRINGFICHESS@YAHOO.COM

I started jeffersoncitychess.googlepages.com/home and the tournaments that followed in 2006. The first tournament I created in this series was November 11, 2006. It was a small tournament, but it led to bigger and better tournaments. Most of the people at the November tournament were from Fulton (25 miles from Jefferson City). So an obvious question was asked, "Should the next tournament be in Fulton?"

A few E-mails and a few months wait allowed me to find an organizing partner, which then turned into a scholastic tournament in Fulton on February 10, 2007. 51 competed in the tournament. This Fulton tournament may be the biggest tournament in Mid-Missouri in 2007 (except for the Missouri Scholastic Championships). 51 players are larger than Charlie Ward's 2006 Missouri Class. 51 players are more than twice the size of any Rehmeier/Howe Jefferson City Open or Class. So what created the high attendance?

My co-organizer from Fulton encouraged Fulton kids to come, creating the largest portion. Tim Campbell (the most active and successful chess coach in the Columbia area) encouraged Columbia kids to come, because he believes in my mission to improve Missouri chess. I encouraged Jefferson City kids to come, creating another portion.

Fifty-one players are larger than any tournament I directed before, so it was not surprising that I made some rookie mistakes. Those rookie mistakes are accounted for and were made then, so they will not be made in the future. This is worth reporting because I know some Mid-Missouri tournament directors /organizers who do not learn from their mistakes, so this creates in me more of a desire to learn from mine. All of 51 kids and parents/coaches should be proud of their part in developing me into a better tournament director /organizer and creating more chess tournaments in the mid-Missouri area because tournaments need people to play in them. But at the end of the tournament what matters most are the tournament leaders.

Vikram Arun, Ashwath Kumar, and Rohit Rao (all from Columbia) won all 4 of their rounds. Josh Bingaman from Fulton scored 3.5 for a clear fourth place. The team competition was close Gentry Middle School was leading after three rounds, but after the last round, Fulton High School finished first. Fulton Middle School finished second and Gentry Middle School finished third. More details can be found online at the following site: jeffersoncitychess.googlepages.com/pastevents.

The next Saturday (February 17, 2007) I ran an event in Jefferson City. I coached chess for two hours. Then a three round tournament was played. Two adults and six kids came for my chess coaching. Sixteen played in the three round tournament.

So far, most of the kids that came to these events were playing in their first tournaments and receiving quality chess instruction for their first time. If these events continue, I predict new chess powerhouses will be created in Mid-Missouri. In order for this to happen, I need continued support from chess people in Missouri. Details of my future events can be found at jeffersoncitychess.googlepages.com/nexttournament.

PIC PRODUCTS

Personalized, Individualized, Customized Products

Have us make a personalized shirt with your picture, your name, your favorite chess score or position, you name it!

1 or 100 shirts

Order for yourself or to surprise a friend

TDs - order commemorative shirts for your tournaments

Coaches - order for your team or camp

see us at www.picproducts.net

(314) 908-1181



SPOTLIGHT ON MISSOURI CHESS: BRAD SCHLOSSER

by Steve Goldberg, e-mail: scholasticchess@hotmail.com



In January of 2004, Brad Schlosser's USCF rating stood at 440. A year later, he had raised it over 900 points, to 1343. By January 2007, he had gained another 400+ points, reaching a high of 1791.

I asked the Parkway Central High School freshman how he has accomplished such a ratings increase. "Taking lessons with Loal Davis and playing in as many tournaments as I can," he answered. "Also, going through many great game collection books has helped a lot." Brad has indeed been busy. The 15-year-old has played in nearly 60 tournaments over the past four years.

Explaining his training regimen, Brad noted that "I really don't study chess as much as I'd like to because of school and other commitments. It's much easier to study without interruption. During the summer, I can study as much as six to seven hours a day. When I do study, it's usually by going through game collections, studying the end game or doing puzzles. The most important part of my training regiment is playing as much as possible either online or otb from blitz to 6 hour games. I often go to the Loop [in University City] to listen to Charles Lawton talk about endgames and to play a lot of good players."

Some of his favorite chess books include *My Best Games of Chess* by Alexander Alekhine, Zurich International 1953, *Rubinstein's Chess Masterpieces* and *Fundamental Chess Endings*.

Brad plays in many local events but has also participated in a number of national

tournaments as well. "In July 2005, I won first place and \$800 in Class C of the U.S. Class Championship Tournament held in St. Louis. I've competed in national scholastic championships in Nashville and Louisville and plan on attending this year's in Kansas City in April. I won 9th place in the National Youth Action Tournament held in Atlanta this past November. Last May, I had the opportunity to play in the Chicago Open where I tied for 3rd place in class C."



Not surprisingly, he's had several local successes as well, placing first in his age group for the state scholastic championships in Jefferson City the past two years. He was also invited to the recent Missouri State High School Tournament of Champions, placing third.

Brad shares one of his recent games with us:

Brad Schlosser - Kevin Johnson

1.d4 Nf6 2.c4 c5 3.d5 b5 4.cxb5 a6 5.b6 Qxb6 6.Nc3 Bb7 7.e4 e6 8.Nf3 Qb4 9.a3 Qa5 10.Bd2 exd5 11.Nxd5 Qd8 12.Bc4 Nxd5 13.exd5 Qf6 14.0-0 Bd6 15.Re1+ Kf8 16.Bc3 Qd8 17.Re4 f5 18.Re2 a5 19.Qd3 f4 20.Rae1 Na6 21.Qf5+ Kg8 22.Ne5 Qf8 23.Qxf8+ Kxf8 24.Nxd7+ and White won.

On a different note, the following photo was posted at GM Susan Polgar's online blog (www.susanpolgar.blogspot.com). It shows U.S. Army Pfc. James Murphy, 23, from St. Peters, MO using light from his weapons to play chess while serving in Baghdad, Iraq.



THE PAWN SHOP: A REVIEW OF GAMES

BY LOAL DAVIS

E- MAIL: LOALDAVIS@YAHOO.COM

(1) Loal Davis (2200) - Thomas Gossell (2190) [B00], KC Masters 2007 (1), 12.01.2007 [Loal Davis]

1.e4 Nc6 The Nimzovich defense.

2.Nf3 f5 He was blitzing this out - I had never seen this last move before.

3.exf5 d5 4.d4 Bxf5 5.Bb5

The 'e5' hole is a definite drawback

to this variation. 5...e6 6.0-0 [Thomas told me that 6.Ne5 Nge7 was the preferred book line - as Black's black Bishop doesn't get to 'd6'.]

6...Bd6 7.Re1 Nge7 8.c4 Black's d6 Bishop has run out of squares. 8...Bb4 [and 8...dxc4 9.Bxc4 increases pressure on the backward 'e6' Pawn.] 9.Bd2 0-0 10.Bc3 a6 This ends up pushing the white Bishop to a better square.

11.cxd5 Qxd5 12.Ba4 Bg4 13.Bb3 Qd6

[13...Bxf3 14.Bxd5 Bxd1 15.Bxe6+ Kh8 16.Rxd1 nabs an important Pawn for White.]

14.Nbd2 Kh8 15.h3 Bf5 16.g4 Bxc3 17.bxc3

Bg6 18.Rxe6 Qd8 19.Ne5 Nxe5 20.Rxe5

Nc8 21.Qe2 Qh4 22.Kg2 Nd6 23.Nf3 Qf6

24.Ng5 Rac8 25.Ne6 Rfe8 26.f4 h6 27.Re1

<Diagram>



An iron fist down the center of the board - plus an extra 'f' Pawn.

27...Qh4 28.f5 Bf7 29.Nf4 Tactics

29...Kh7 [29...Bxb3 30.Ng6+; and

29...Rxe5 30.dxe5 attacks the

Knight that defends the Bishop that defends the check on 'g6'.] 30.Bxf7

A Knight recapture drops a Rook -

and 30. Re5 Bg6+ walks away with a piece. 1-0

(2) William Orton (2201) - Loal Davis (2200) [B03], KC Masters 2007 (2), 13.01.2007 [Loal Davis]

1.e4 Nf6 2.e5 Nd5 3.d4 d6 4.c4 Nb6 5.exd6 cxd6 6.Be3 g6 7.d5 Bg7 8.Bd4 Bxd4

Pulling the Queen to a vulnerable/target

square. 9.Qxd4 0-0 10.h4 e5 11.Qd2 [With 11.dxe6 Nc6 12.exf7+ Rxf7 White is severely behind in development with the center opening up.] 11...h5 Shutting down the 'h' file. Both Pawn pushes of 'f4' and 'g4' for White will leave gaping holes in his Kingside.

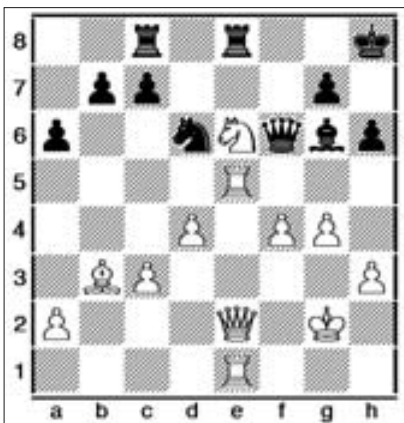
12.Nc3 N8d7 13.0-0 Nf6 14.f3 Kg7 15.b3

Bd7 16.Nh3 Nc8 Angling for 'f5' where the Knight will eye 'g3' and a leap into 'd4'.

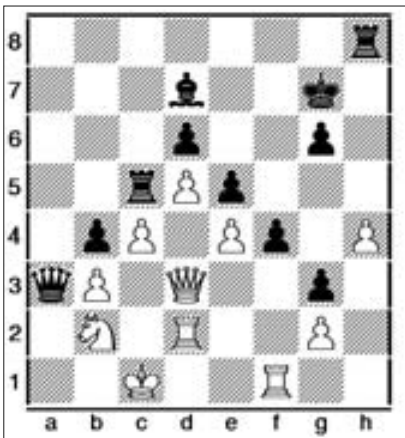
17.Bd3 Ne7 18.Nf2 a6 Also preparing a 'b5' thrust to bust open the King position while endeavoring to get to the root of the Pawn chain.

19.Nfe4 Nxe4 20.fxe4 This prevents Black's intended 'Nf5', but leaves 'g4' wide open.

20...Ng8 Humorous! This Knight has taken six moves to return to his original square. Nf6/Nd5/Nb6/Nc8/Ne7/Ng8. But -



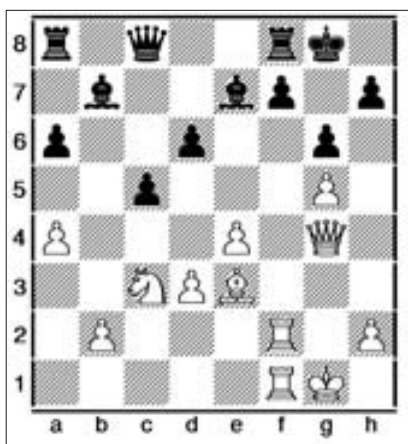
'g4' is mine. **21.Rdf1 Nh6 22.Nd1** Preparing to oust the Knight should he arrive on 'g4'. But the opening against the King is accelerated. **22...b5 23.Ne3 f6** Before moving the Queen to 'b6' or 'b8', this prevents a potential 'Nf5+' followed by Qg5+. **24.Kb2 Qb8** [I was originally concerned about 24...Qb6 25.Qf2 when my Queen was subject to being hung against a Knight check on f5. However 25...Qd4+ anchors the Queen and the opening of lines with 'bc' may well have been a quicker way to get at the white King.] **25.Rc1 Rc8 26.Rc2 b4** Shutting down 'c' file activity for White, increasing the length of the "chain" and keeping 'a5/a4' in the ready. 27.Qf2 Qa7 Now 'Qd4+' will actually win material. **28.Nd1 Rc5** No Queen exchange. The Pawn chain root is ready to be assaulted. **29.Be2 [29.Rf1 Ng4] 29...a5 30.Rf1 f5** The 'a8' Rook remains where he is to assist in the King attack. [30...Rf8 is unnecessarily slow.] **31.Kc1** Running before he is hit. **31...a4 32.Nb2 axb3 33.axb3 Qa3** Target - 'b3' - coupled with a nice pin. **34.Qf3 f4 35.Qd3 Ng4** This Knight on 'e3' will be a monster. **36.Bxg4 hxg4 37.Rcf2 g3 38.Rd2 Rh8** <Diagram>



Attacking left, right, and center. The 'h' Pawn in untenable. Black can double on the 'h' file coupled with 'g5' if necessary. **39.Kc2** White just decides to let it go. **39...Rxb4 40.Rb1** Potential threat of winning the black Queen if White can get a supported Rook to the 'a' file. **40...Qa7 41.Qf1 Ra5 42.Qg1 Qxg1** Entering an ending where White's contemplated 'Nd3' doesn't work. **43.Rxg1 Rh2 44.Nd3** [44.Kb1 Ra3 does not allow 45.Nd3 because of 45...Rxb3+ and 45. Rd3 takes away White's only source of counterplay while Black rolls with the Kingside Pawns.] **44...Ra2+ 45.Nb2** [45.Kd1 Rxd2+ 46.Kxd2 f3 followed by 'f2' is lights out.] **45...f3 46.Kb1** [46.gxf3 Rxd2+ 47.Kxd2 Rxb2+ and the house is falling in.] **46...Ra3** Once again 'f2' is a crusher. **0-1**

(3) Loal Davis (2200) - Kenneth Jones (2304) [B82], KC Masters 2007 (3), 13.01.2007 [Loal Davis]

1.e4 c5 2.Nf3 Nc6 3.d4 cxd4 4.Nxd4 Qb6 5.Nb3 Nf6 6.Nc3 e6 7.Bd3 d6 8.Be3 Qc7 9.f4 Be7 10.0-0 a6 11.a4 b6 12.Qf3 Bb7 13.g4 [13.a5 Nxa5 14.Nxa5 bxa5 15.Ra2 and doubling Rooks on the 'a' file is a definite idea to be considered. Black's Pawns have very little "real" value here and White, several avenues of increasing pressure.] **13...Nd7 14.g5 Nc5 15.Rf2** [15.Nxc5 dxc5 will facilitate Black's Knight entry into 'd4'.] **15...Nb4** [15...Nxb3 16.cxb3 would be better for Black in a strict King & Pawn ending, but here, White gets the 'c' file for his rook(s).] **16.Nxc5 bxc5 17.f5 Nxd3 18.cxd3 exf5 19.Qxf5 0-0 20.Raf1 g6 21.Qg4 Qc8** < Diagram>



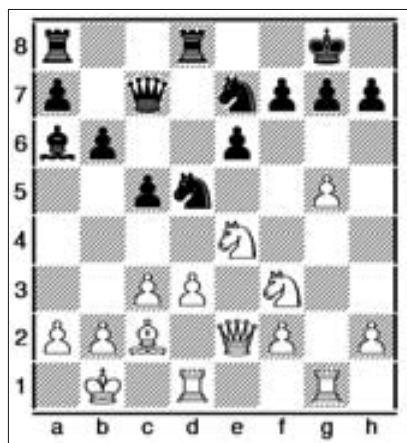
22.Qxc8 I felt I had to exchange Queens here, as Black had a potential 'Qe6', when 'd5' and pressure down the 'e' file would be irritating. **22...Raxc8 23.Rd2 f6 24.gxf6 Bxf6 25.d4 cxd4 26.Bxd4 Bg5 27.Rd3** [Any contemplated 27.Rxf8+ Kxf8 hereabouts would simply centralize the black King to defend his 'd6' Pawn. I need that as a target for counter-play.] **27...Bf4** Threat - Bh2+ - overworked King. **28.Rdf3 g5 29.Be3 Rxc3** One of several drawing schemes. **30.bxc3 Bxe4 31.Rxf4 gxf4 1/2-1/2**

(4) Ron Luther (2243) - Loal Davis (2200) [B02], KC Masters 2007 (4), 14.01.2007 [Loal Davis]

1.e4 Nf6 2.Nc3 d5 3.exd5 Nxd5 4.Bc4 Nb6 5.Bb3 c5 6.d3 Nc6 7.Nf3 e6 8.Bf4 Bd6 9.Bxd6 Qxd6 10.Ne4 Qe7 11.c3 0-0 12.Qe2 Nd5 13.0-0-0 b6 14.g4 Suspect - but I like the spirit behind it. Ron told me afterwards that he had to do something, as Black had an easy attack on the Queenside and in the center. **14...Rd8 15.g5** The idea behind this is to get a Rook on the 'g' file and facilitate a possible 'Nf6+' and opening lines against my King. **15...Ba6** Reminding White that 'd3' is

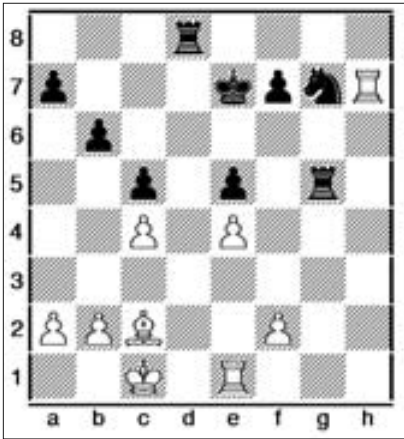
soft - threat 'Nf4'. **16.Bc2 Qc7** Good - now the Queen is eyeing 'f4' as well. A check there should facilitate any sacrificial ideas that White should have. **17.Rhg1 Nce7** This Knight was only "looking" good, but actually doing very little. This relocates to 'f5' with attack or 'g6' to shield as the need arises.

18.Kb1 <Diagram>



18...Nf5? [18...Nf4! is a crusher. as 19.Qf1 is forced. Then Black plays 'Rd7' and doubles on the 'd' file. White can do nothing. Ron told me afterwards that he could see nothing against this plan. (Why did I not play it? I didn't see that 19.Qe3 Nf5 simply wins outright. I thought I had to play the Knight to 'f5' first. Unfortunately, that lets White back into the game.)] **19.Ng3 Nf4 20.Qe5 Qxe5 21.Nxe5 Nh4** [My original idea of 21...Nh3 22.Rg1 (Not 22.Rg2 Nh4) 22...Nxxg5 23.f4 will maroon the 'g5' Knight.] **22.Ne4 Bb7 23.Rg4 Nhg6 24.Nxg6 Nxg6 25.Re1 Kf8 26.h4 Ba6 27.Re3 Ne5** Jockeying for time; move 30 was the lower limit for offering a draw. [27...Ne7 may well have transposed back into the game.] **28.Rgg3 Ng6 29.Rg4 Ne5 30.Rgg3 Ng6** He could have claimed a

draw by three-fold repetition here. **31.h5 Ne7 32.Rh3 Nf5 33.Re1 Ke7** Clearing 'g8' for a Rook should White play 'h6' and a Pawn exchange ensues. **34.Rf3** Tactical alert. White threatens 'Nc5' and 'Rf5' - pin on the 'e' file. **34...Rd5 35.h6 Rad8** [35...gxh6 is a blunder as 36.Nf6 kicks the Rook away and White wins the Knight on 'f5'.] **36.hxg7 Nxg7 37.c4** Attempting to remove my pressure on 'd3' and the Rook's influence on 'g5'. **37...Rf5 38.Rh3 Bb7** A cute transition to a superior ending. **39.Rxh7 Bxe4 40.dxe4 Rxg5 41.Kc1 e5** <Diagram>

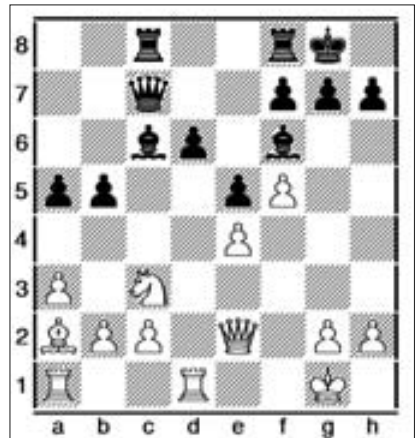


Keeping the white Pawns on white squares to manufacture stumbling blocks and mobility problems for his Bishop - also - facilitating 'Ne6' and leaps into 'd4' and 'f4'. **42.Ba4 Ne6** [Ron thought that 42...Rd6 was better. He may well be right - it would certainly have made the ending easier to calculate by not having to work around the Bishop on 'd5'.] **43.Bc6 Rg2 44.Rf1 Rd3** The 'f' Pawn is dropping. **45.Rh5** His only source of counterplay. Alas, it just doesn't work. **45...Rf3 46.Bd5 Rfxf2 47.Rxf2 Rxf2 48.Rxe5 Kd6 49.Rh5 Nf4** This Knight is a multi-tenacled dragon. It

just does everything. Entry into 'd3' is a killer - and the defense 'Rh3' just isn't possible. **50.e5+ Ke7 51.Rg5 Nd3+ 52.Kd1 Nxb2+ 53.Kc1 Nd3+** and White resigns. **54.Kb1 Rb2+ 55.Ka1 Re2** threatens mate coupled with scarfing the 'e5' Pawn. **0-1**

(5) Loal Davis (2200) - Tim Steiner (2006) [B89], KC Masters 2007 (5), 14.01.2007 [Loal Davis]

1.e4 c5 2.Nf3 d6 3.d4 cxd4 4.Nxd4 Nf6 5.Nc3 Nc6 6.Bc4 e6 7.Be3 Bd7 8.Qe2 a6 9.a3 b5 10.Ba2 Be7 11.0-0 Rc8 12.f4 Qc7 13.f5 Black has been outplayed. I've seen several Fischer games where this thrust conquers the 'd5' square. **13...e5 14.Nxc6 Bxc6 15.Bg5** Black is busted. The Knight will be removed, the Bishop played to 'd5' and White ends up with a good Knight on a "forever" square ('d5') versus a bad Bishop. **15...0-0 16.Rfd1 a5 17.Bxf6 Bxf6** <Diagram>



18.Nd5?! This relatively poor move was prompted by the search for a draw. Why? Gossell appeared to be winning his game; a

worse case scenario for me would be to lose this game and end up in a rapids playoff. All I needed was a half point - understandable - but regrettable nevertheless. [18.b4 is correct. It looks poor from a static Pawn perception, but shuts down any counterplay for Black while stabilizing the 'b5' Pawn. White continues with 'Rd3' (maybe doubling on the 'd' file) before exchanging on 'f6', 'Bd5', etc.]

18...Bxd5 19.Rxd5 Qxc2 20.Qxc2 Rxc2
21.Rxb5 Rfc8 22.Rb7 R2c7 23.Rxc7 Rxc7
24.Rd1 Be7 25.Rd2 Rc5 26.Bb3 Kf8 27.Rc2
Bg5 [I was hoping for 27...Rb5 28.Rc8+ Bd8
29.Ba4 when White wins. But any real winning chances evaporated with my decision back on move 18.] 28.Rxc5 dxc5 29.a4 Bc1
30.Bc4 Bxb2 31.Kf2 1/2-1/2



Get online today!

Hey Scholastic Players!

Go to two key websites for scholastic tournament news!

Gateway Chess Association (St. Louis)
Website: www.gatewaychess.org

Kansas City Scholastic Chess Association
Website: www.kcchess.org

A 3-Day Camp for Scholastic Players

THE CHESS CLUB
2007 CHESS CAMP

www.kcchess.net

July 25-27, 2007
Kansas City, Missouri

9-4:00 p.m.

Reserve a spot by calling 816-835-7529

Each player receives a free tournament chess set and board!

Scholastic Chess Reading List

Beginning Players:

Introductory works - The following are excellent introductory books on chess.

Kasparov, Gary. *Checkmate! My First Chess Book* (Everyman Chess, 2004).

This book, written by former world champion Garry Kasparov, is an ideal “first” guide on chess. It not only covers all basic information, but does so with eye-catching color graphics that hold a young person’s attention.



Chandler, Murry & Helen Milligan. *Chess for Children* (Gambit Publication, 2004).

A good beginner book for young children (ages 4-7). The rules and basic chess information are explained by the inventive tales George is told by his pet alligator Kirsty, self-proclaimed Grand Alligator of chess.

Chandler, Murry. *How to Beat your Dad at Chess* (Gambit Publication, 1998).

A good beginner book for an older scholastic player. This book teaches the 50 Deadly Checkmates and basic attacking patterns that occur often in scholastic games. Chandler has a very good book on tactics as well.

Checkmates - After learning the basic rules, beginning chess players need to learn and begin to master the important skill of how to checkmate an opponent.

Schiller, Eric. *One Move Checkmates: 201 Instructive and Challenging Mates for Beginners* (Cardoza Press, 2005).

This book is a helpful training tool for beginning players. It covers the most basic of all mates—the one move mate. Schiller presents different game positions where the reader must find the move that instantly wins the game.

Parents Only - These books are designed to aid parents in encouraging kids with chess.

Ashley, Maurice. *Chess for Success: Using an Old Game to Build New Strengths in Children and Teens* (Broadway, 2005).

A well-researched book that touts the benefits of chess, not only scholastically, but in terms of self-esteem and confidence-building. Ashley, an African-American grandmaster, provides several inspirational stories and ideas for encouraging kids in chess.

Heisman, Dan. *A Parent’s Guide to Chess* (Russell Enterprises, 2002).

A good parent road map for how to guide kids in chess. It recommends books, gives general advice, and explains what to expect when a child starts participating in tournaments.

Chess Links

Chess for Scholastic Players

The Magic Theater

(<http://www.chessdryad.com/education/magictheater/index.htm>)

This site uses Flash movies to explain basic rules, moves, and checkmates

Chessville

(www.chessville.com)

Chessopolis

(www.chessopolis.com)

Bughouse

(www.bughouse.com)

Sites to Play Chess

Internet Chess Club

(www.chessclub.com)

Gameknot

(<http://gameknot.com>)

National and World Chess

United Chess Federation

(www.uschess.org/)

ChessCafe.com

(www.chesscafe.com)

ChessBase USA

(www.chessbaseusa.com/)

The Internet Chess Club and Chess FM Radio

(www.chessclub.com/)

This Week In Chess

(www.chesscenter.com/twic/twic.html)

State-wide Chess

www.powerpawn.net

www.kcchess.org

<http://jimvoelker.com/>

<http://www.stlchess.com>

<http://www.chess.jpkoonce.net>

Gateway Chess Association -St. Louis -Scholastic

(www.gatewaychess.org/)

Midwest Chess Academy

(www.midwestchess.com)

Grandmaster Chess

GM Square - Alex Baburin

(www.gmsquare.com)

Chess Today

(www.chesstoday.net)

www.jeremysilman.com

Instructional Chess Sites

Links to Online Resources From Rutgers University

(<http://www.rci.rutgers.edu/~goeller/urusov/links/beginners.html>)

Provides a hosts of links to sites from beginner to advanced.

GAMES FROM MISSOURI PLAYERS

E-mail games to kfee@kc.rr.com in Chessbase or pgn format

Bodenheimer, David (307) - Valenti, Scott (1328)

[B50], Game 45 The Chess Club, Kansas City,

29.12.2006,

Annotated by Scott Valenti

**1.e4 c5 2.Nf3 d6 3.Bd3 Nf6 4.Bb5+ Bd7 5.Nc3 a6
6.Ba4 b5 7.Bb3 c4 8.Nd5 Nxd5 9.exd5 cxb3
10.axb3 g6 11.d4 Bg7 12.0-0 0-0 13.Re1 Bg4 14.h3
Bxf3 15.gxf3 Nd7 16.Re2 Nb6 17.Qe1 Re8 18.Bg5
f6 19.Bh4 Nxd5 20.c4 Nf4 21.Rxe7 Rxe7 22.Qa5
Qxa5 23.Rxa5 Nxb3+ 24.Kg2 Nf4+ 25.Kg3 g5
26.Ra1 gxh4+ 27.Kxh4 Rf7 28.cxb5 a5 29.b4 a4
30.b6 Rb7 31.d5 Rxb6 32.b3 a3 33.Kg4 Nxd5
34.Rd1 a2 35.Ra1 Rxb4+ [Black missed this move:
35...f5+] 36.f4 Rxf4+ [Missed it again: 36...f5+]
37.Kg3 f5 38.b4 Bxa1 39.f3 Kh8 resign. 0-1**

Valenti, Scott (1328) - Smith, Frank H (1561) [C91]

Game 45, 29.12.2006

Commentary by S. Valenti with some help from "Fritz

9," MCO-13 and "Mastering the Spanish." **1.e4 e5**

2.Nf3 Nc6 3.Bb5 a6 4.Ba4 Nf6 5.0-0 b5 [Mainline Ruy Lopez Closed Def move order (MCO): 5...Be7 6.Re1 b5 7.Bb3 d6 8.c3 0-0 9.h3 Bb7 Zaitsev (Fianchetto) Variation. 10.d4 Re8 11.Nbd2 Bf8+/-]

6.Bb3 Be7 [Archangel Var.: 6...Bb7 7.Re1 Bc5] **7.Re1**

d6 8.c3 [Avoiding "Noah's Ark" trap: 8.d4? Nxd4

9.Nxd4 exd4 10.Qxd4?? c5] **8...Bb7** [MCO: 8...0-0

9.h3 Bb7 10.d4 Re8 11.Ng5 a) 11.a4 Bf8 12.d5 Na5;

b) 11.Nbd2 Bf8 12.Bc2 b1) 12.a4 Qd7; b2) 12.a3 h6

(12...Nb8) ; 12...g6; 11...Rf8 (11...d5? 12.exd5 Nxd5

13.dxe5) 12.f4 (12.Nf3 Re8 draw.)] **9.d4 0-0 10.d5?!**

this was probably premature; it would have better to retain the central tension. This is similar to the Fianchetto variation, and the following ideas come from that variation: [10.Ng5 is more effective with the Black Rook on e8; 10.a4 with a later d5. W Bishop has a2 post for retreat in case of ...Na5. Then the Bishop has the diagonal a2-g8. This will be useful if d5x(Pawn)c6 is played.; 10.Nbd2 with idea of:

10...Re8 11.Bc2 (11.a4; 11.a3)] **10...Na5 11.Bc2**

c6 [An interesting sacrifice ("Mastering the Spanish"): 11...Nxe4 12.Bxe4 f5 13.Bc2 e4 14.Nd4

Bxd5; Niemers (2003)-Usachyi (2227)/Bad Zwosten 2002: 11...Nc4 12.Nbd2 Nxd2 13.Bxd2 c6 14.dxc6

Bxc6 15.Qe2 Qc7 16.h3 Nd7 17.Be3 Nc5] **12.dxc6**

Rather than dxc6, W could consider allowing

...cxd5 exd5, thereby opening the diagonal for the W-squared Bishop, although the W Pawn on d5 would be weak. It would be under double attack,

but only defended once. **12...Bxc6 13.Nbd2 Nb7**

14.Nf1 Nc5 15.N3d2 a5 [Fritz: 15...d5 16.exd5

Qxd5 17.Ne3 Qd7 18.Nf5 e4 19.Nxe7+ Qxe7

20.Nf3 Ne6 21.Ng5 Nxb5 22.Bxg5 Rad8 23.Qf3

exf3 24.Rxe7 fxg2 25.Bxf6 Rd2 26.Rc7 gxf6

27.Bxh7+ Kxh7 28.Rxc6 Rxb2 29.Rxf6 Rc2

30.Kxg2 Rxc3 31.Rxa6 Rg8+ 32.Kf1+/-] **16.b3**

[16.Ne3 may have been better.] **16...Qb6 17.Qe2**

Rfe8 18.Kh1 wanting off the Q's diagonal, but it

may have been better to stay. [18.Bb2] **18...Ne6**

19.Nb1?! undeveloping the Knight and re-opening

a line for the Bishop; a questionable move. [19.Ne3

Qc5 20.Bb2] **19...b4 20.c4??** [Possible alterna-

tives: 20.Ng3 Fritz: 20...d5 21.exd5 Bxd5; 20.f3 Nf4

21.Bxf4 exf4] **20...Qd4 21.Bd3 Qxa1 22.Bb2 Qxa2**

23.Qc2 Nc5 time. 0-1

Spies, Bob (1753) - Valenti, Scott (1328) [B50]

Game 45 The Chess Club, Kansas City,

29.12.2006

Commentary by S. Valenti with some help by the

"Fritz 9" computer program. **1.e4 c5 2.Nf3 d6**

3.Nc3 Nf6 4.e5 one of the anti-Sicilian variations.

4...dxe5 5.Nxe5 a6 6.Bc4 e6 7.a4 Bd6 8.Nf3

[Arakhamia (2380)-Matveeva (2370), Podolsk

1990: 8.d4 Qc7 9.Nf3 cxd4 10.Qxd4 Nc6] **8...Nc6**

9.0-0 0-0 10.d3 b6 11.Bg5 Be7 12.Re1 Bb7

13.Qe2 h6 14.Bh4 Nd4 15.Nxd4 Qxd4

16.Bg3 Bd6 17.Qe3 Qxe3 18.Rxe3 Rfd8

19.Bh4 g5 20.Bg3 Nh5 21.Bxd6 Rxd6 22.Ne4

Rdd8 23.Rh3 [23.h4 Bxe4 24.Rxe4 Nf6 25.Ree1 gxh4] **23...Nf4 24.Re3** [24.Rxh6?? and the Rook is trapped. 24...Bxe4 25.dxe4 Kg7 26.g3 Kxh6 27.gxf4 gxf4] **24...Kg7 25.Rae1 Rd7?** Black missed a Pawn attack on the Knight here. [25...f5 26.Ng3 Nxd2 27.Rxe6 Nxe1 28.Nxf5+ Kf8 29.Rf6+ Ke8 30.Re6+ Kd7 31.Re7+ Kc6 32.Re6+ Kc7 33.Re7+ Rd7 34.Rxe1 Black is up a Rook for a Knight and a Pawn.] **26.Rg3 Kg6 27.Rge3 Bc6** note that the Black Bishop is hanging. This will be a concern later. A Rook fork will be possible between the Black K and Bishop. 28.b3 b5 29.Nxc5 Black is a Pawn down. **29...Rdd8 30.Bxe6 Nxg2** [30...fxe6? 31.Rxe6+ Nxe6 32.Rxe6+] **31.Bxf7+ Kxf7** White is down a Bishop for two Pawns. 32.Re7+ Kf8 33.R1e6 Bf3 Black played on several more moves under time pressure and resigned. [Better may have been: 33...Nf4 34.Rc7 Bd5 35.Rxh6] **1-0**

Event KC Open White "Smith, Frank" Black "Conklin, Spencer" ECO "D53" White "1685" Black "1428" Date 2007.02.17

1. c4 Nf6 2. d4 d5 3. Nc3 e6 4. Bg5 Be7 5. e3 O-O 6. Nf3 Nc6 7. a3 dxc4 8. Bxc4 Ne4 9. Bxe7 Nxe7 10. O-O Nxc3 11. bxc3 Nd5 12. Rc1 c6 13. Qb3 b5 14. Bxd5 exd5 15. Qb4 f6 16. Qc5 Qb6 17. Nd2 Bf5 18. Nb3 Bd3 19. Rfe1 Bc4 20. Nd2 Qxc5 21. dxc5 a5 22. Nf3 Rfc8 23. Nd4 Rab8 24. Nf5 Kf8 25. Nd6 Rc7 26. e4 b4 27. cxb4 axb4 28. Rb1 b3 29. Nxc4 dxc4 30. Rec1 Ra7 31. Rxc4 Rxa3 32. Kf1 b2 33. Rd4 Ra1 34. Rdd1 Rba8 35. Ke2 R8a2 36. Kd2 Ra4 37. Kc3 R4a3+ 38. Kc2 Rxb1 39. Rxb1 Ra5 40. Rxb2 Rxc5+ 41. Kd3 Kf7 42. Rb7+ Kg6 43. Rc7 Rc1 44. f4 h5 45. e5 fxe5 46. fxe5 Kf5 47. Rxd7 c5 48. h4 Re1 49. Rg5+ Kf4 50. Rxh5 Kg4 51. Rh8 Rxe5 52. Kc4 Kg3 53. h5 Kg4 54. h6 Kg5 55. h7 Kg6 56. Rc8 Kxh7 57. Rxc5 Rxc5+ 58. Kxc5 Kg6 59. Kd4 Kg5 60. Ke3 Kg4 61. Kf2 Kf4 62. g3+ Kg4 63. Kg2 Kg5 64. Kf3 Kf5 65. g4+ Kg5 66. Kg3 Kg6 67. Kf3 Kg5 68. Kg3 Kg6 69. Kf4 Kf6 70. g5+ Kg6 71. Kg4 Kg7 72. Kg3 Kg6 73. Kf4 Kg7 74. Kf5 Kf7 75. g6+ Kg7 76. Kg5 Kg8 77. Kf5 Kg7 78.

Kg5 Kg8 79. Kh6 Kh8 80. g7+ Kg8 1/2-1/2

Event "KC Open-Reserve(U1500) Date "2007.02.16" White "Asher, Leroy" Black "Ciccio, Joe" ECO "C11" White "1083" Black "1362"

1. e4 e6 2. d4 d5 3. Nc3 Nf6 4. e5 Nfd7 5. Nf3 c5 6. Be3 Qb6 7. Rb1 Nc6 8. dxc5 Bxc5 9. Bxc5 Qxc5 10. Bb5 O-O 11. Bxc6 bxc6 12. O-O a5 13. Re1 Qb6 14. Qd4 c5 15. Qh4 Ba6 16. Ne2 Bxe2 17. Rxe2 Qb4 18. c3 Qxh4 19. Nxh4 Rfb8 20. f4 Rb6 21. Nf3 c4 22. Ne1 Rab8 23. Kf2 Nc5 24. Kg3 Ne4+ 25. Kf3 Nxc3 26. bxc3 Rxb1 27. Kf2 R8b2 28. a3 Rxe2+ 29. Kxe2 Rb3 0-1

Event "KC Open" Date "2007.02.16" White "Gaul, Tom" Black "Walker, Tim" ECO "A06" White "1806" Black "1612"

1. Nf3 d5 2. b3 c5 3. e3 Nc6 4. Bb2 Nf6 5. Bb5 e6 6. O-O a6 7. Bxc6+ bxc6 8. Ne5 Bd6 9. f4 Qc7 10. Nc3 Bxe5 11. fxe5 Qxe5 12. Na4 d4 13. Nb6 Rb8 14. Nc4 Qg5 15. exd4 Ng4 16. Nd6+ Ke7 17. Nxc8+ Rhxc8 18. Ba3 Rb5 19. Bxc5+ Rxc5 20. dxc5 Qxc5+ 21. d4 Qg5 22. Qf3 Rd8 23. Qxf7+ Kd6 24. Rae1 Ne3 25. Rf2 Rd7 26. Qf3 Nf5 27. Qe4 Re7 28. Qe5+ Kd7 29. c4 Qh4 30. d5 cxd5 31. cxd5 Nd4 32. Rf4 Nf3+ 33. Rxf3 Qh6 34. d6 Re8 35. Rf7+ Kd8 36. Qa5+ 1-0

Event "KC Open" Date "2007.02.16" White "Smith, Fred" Black "Hochee, Michael" ECO "C44" White "802" Black "1658"

1. e4 e5 2. c4 Nc6 3. Nf3 Bc5 4. Be2 Nge7 5. Nxe5 Nxe5 6. d4 Bb4+ 7. Bd2 Bxd2+ 8. Nxd2 N5g6 9. O-O O-O 10. f4 f5 11. c5 d5 12. e5 Nc6 13. Nf3 Nxf4 14. h4 Nxe2+ 15. Qxe2 f4 16. Ng5 h6 17. Qh5 hxg5 18. hxg5 Rf5 19. Rxf4 Rxf4 20. Rf1 Rxf1+ 21. Kxf1 Bf5 22. g4 Qf8 23. Ke1 g6 24. Qh4 Nxd4 25. Qh3 Be4 26. a4 Qxc5 27. Qh6 Qc1+ 28. Kf2 Qd2+ 29. Kg3 Qg2+ 30. Kf4 Qf3# 0-1

Event "KC Open-Reserve(U1500)" Date "2007.02.16" White "Conklin, Joe" Black "Forbes, Todd" ECO "A48" White "1442" Black 1206

1. d4 Nf6 2. Nf3 g6 3. e3 Bg7 4. b3 O-O 5. Bb2 d6 6. Be2 c6 7. c4 Nbd7 8. Nc3 e5 9. Qc2 a5 10. Rd1 Ne8 11. O-O f5 12. dxe5 Nxe5 13. Na4 Qc7 14. Rd2 Be6 15. Rfd1 Rd8 16. Nxe5 Nf6 17. Nf3 Ne4 18. Rd3 Nc5 19. Bxg7 Kxg7 20. Nxc5 dxc5 21. Qc3+ Kg8 22. Ne5 Rxd3 23. Rxd3 Rd8 24. h4 Rxd3 25. Nxd3 b6 26. h5 Qg7 27. Qe5 Qxe5 28. Nxe5 b5 29. Nxc6 a4 30. cxb5 Bxb3 31. axb3 a3 32. Bc4+ Kg7 33. b4 1-0

KC Open Date "2007.02.16" White "Heimbaugh, Michael" Black "Luther, Ron" ECO "B01" White "1615" Black "2247"

1. e4 d5 2. exd5 Nf6 3. d4 Bg4 4. Be2 Bxe2 5. Nxe2 Qxd5 6. O-O Nc6 7. Bf4 O-O-O 8. c3 e5 9. Be3 h5 10. Qa4 Ng4 11. c4 Qa5 12. Qd1 exd4 13. Bd2 Qf5 14. Nf4 Bd6 15. g3 Nce5 16. Qb3 g5 17. f3 Ne3 18. Bxe3 dxe3 19. Ne2 Nxf3+ 20. Kg2 Qe4 0-1

KC Open "Date "2007.02.16" White "Horton, Stanley" Black "Spies, Bob" ECO "B28" White "1591" Black "1750"

1. e4 c5 2. Nf3 a6 3. d4 cxd4 4. Nxd4 e5 5. Nf3 Nc6 6. Nc3 Bb4 7. Bd2 Nf6 8. Bd3 d5 9. Nxd5 Nxd5 10. exd5 Qxd5 11. O-O Bg4 12. Bxb4 Nxb4 13. Be2 Qxd1 14. Rfxd1 e4 15. Nd4 Bxe2 16. Nxe2 Nxc2 17. Rac1 Nb4 18. Rc4 Nc6 19. Rxe4+ Kf8 20. Nd4 Rd8 21. Kf1 Rxd4 22. Rxd4 Nxd4 23. Rxd4 Ke7 24. Ke2 Rc8 25. Kd2 Ke6 26. Rd3 Rc7 27. Rc3 Rxc3 28. Kxc3 Kd5 29. Kd3 f5 30. f4 a5 31. b3 b5 32. a3 Kc5 33. h3 h6 34. g4 fxg4 35. hxg4 Kd5 36. f5 Ke5 37. Ke3 h5 38. Kf3 h4 39. Kg2 Kf4 40. Kh3 Kg5 0-1

KC Open Date "2007.02.17" White "Luther, Ron" Black "Spies, Bob" ECO "B25" White "2247", Black "1750"

1. e4 c5 2. Nc3 Nc6 3. g3 g6 4. Bg2 Bg7 5. d3 d6 6. h3 Bd7 7. Be3 e6 8. Qd2 Nd4 9. Nd1 Ne7 10. c3 Ndc6 11. Bh6 O-O 12. Bxg7 Kxg7 13. Ne3 f5 14. Ne2 Rc8 15. O-O Rf7 16. Rae1 Qf8 17. Nc4 Ng8 18. f4 b5 19. Ne3 Nge7 20. g4 fxg4 21. hxg4 Kg8 22. d4 cxd4 23. cxd4 Qd8 24. b4 a5 25. a3 Qb6 26. d5 exd5 27. exd5 Nd8 28. Nd4 axb4 29. axb4 Ra8 30. Rf2 Ra3 31. Kh2 Qc7 32. Rc1 Qa7 33. f5 gxf5 34. Nxf5 Nxf5 35. Qg5+ Ng7 36. Qxd8+ Be8 37. Rxf7 Qxf7 38. Qxd6 Qf2 39. Rf1 Qh4+ 40. Kg1 Bf7 41. Qf4 Qe7 42. d6 Qa7 43. Rf2 Rd3 44. Nxb5 Qd7 45. Bc6 Qe6 46. Nc7 Qg6 47. Be4 Rd1+ 48. Kg2 Ne6 49. Qf3 Ng5 50. Bxg6 Nxf3 51. Bxf7+ 1-0

KC Open Date "2007.02.17" White "Hochee, Michael" Black "Gaul, Tom" Result "1-0" ECO "A07" WhiteElo "1658" BlackElo "1806"

1. Nf3 d5 2. g3 Nf6 3. Bg2 e6 4. d3 Be7 5. O-O Bd7 6. c4 Bc6 7. Ne5 O-O 8. Nd2 Be8 9. b4 Bxb4 10. Rb1 Bd6 11. d4 b6 12. e4 Nc6 13. Nxc6 Bxc6 14. e5 Be7 15. exf6 Bxf6 16. Ba3 Re8 17. Nb3 a5 18. Qd3 dxc4 19. Qxc4 Bxg2 20. Kxg2 a4 21. Nc1 Ra5 22. Ne2 Qa8+ 23. f3 Ra7 24. Rfd1 g5 25. Kf2 g4 26. fxg4 Qe4 27. Nf4 Rd8 28. Bb2 a3 29. Ba1 e5 30. Nh5 Be7 31. Qe2 Qc6 32. Qxe5 Qc2+ 33. Qe2 Qxe2+ 34. Kxe2 Bg5 35. Nf4 Ra4 36. Rb3 Bf6 37. Rbd3 Rc4 38. R1d2 Rc1 39. Bc3 c5 40. dxc5 Rxd3 41. Kxd3 Rxc3+ 42. Ke4 Rxc5 43. Rd6 Be7 44. Rd7 Bf8 45. Kd3 Rc1 46. Nh5 Rd1+ 47. Kc4 Rxd7 48. Nf6+ Kg7 49. Nxd7 Kg6 50. Nxf8+ Kg5 1-0

Event KC Open Date "2007.02.17" White "Conklin, Spencer" Black "Heimbaugh, Michael" ECO "A47" WhiteElo "1428" BlackElo "1615"

1. d4 Nf6 2. Nf3 e6 3. e3 b6 4. Bd3 Bb7 5. O-O c5 6. b3 cxd4 7. exd4 Bb4 8. Bb2 Qc7 9. a3 Be7 10. Nbd2 Nc6 11. c4 d5 12. Ne5 dxc4 13. Bxc4 O-O 14. Rc1 Qd6 15. Ndf3 Nd5 16. Bd3 Rac8 17. Nc4 Qd8 18. Re1 Bd6 19. Nfe5 Nce7 20. Re4 f5 21. Rh4 Rf6 22. Rc2 Bxe5 23. dxe5 Rg6 24. Nd6 Rxg2+ 25. Kf1 Rxc2 26. Qxc2 Ng6 27. Nxb7 Ne3+ 28. fxe3 Qxh4 29. Qxg2 1-0

REGIONAL CHESS CLUBS

Kansas City Area Clubs

E-mail Kfee@kc.rr.com with changes

The Chess Club. Location: Vivion West Shopping Center (North KC) 2314 NW Vivion, Riverside MO 64150. Meets Wed. Fri. Sat, 6:00 to 12:00 PM Single visit \$5. Contact: Kenneth Fee (816) 835-7529 or chessclub@powerpawn.net. Club Web site: www.powerpawn.net

Westport Chess Club. Location: Westport Flea Market at 817 Westport Rd., Kansas City, MO 64111 (just east of the intersection of SW Trafficway and Westport Rd.) year-round basis. Tuesday's 6:30 to 11:00 PM \$2 fee adults, \$1 under 18 Contact: Bill Mendus wmendus@swbell.net

Rockhurst Community Chess Club. Location: Rockhurst University Community Center, 5401 Troost Ave., Kansas City MO 64110 Saturdays 10:00am to 1:00pm Contact: Alicia Douglas (816) 501-4306

Kansas City (KS) Public Library. Location: 625 Minnesota, Kansas City KS Meets: Wednesdays 5:30 to 8:00 PM Contact: Brooke Leavitt (913) 551-3280

ST. LOUIS AREA CLUBS

St. Louis Chess Club. Location: St. Louis Bread Company 6630 Delmar Ave. (U-City) Chess played every night 6-9pm Most players come on weekends Contact: Joseph Garnier at chessoholic@sbcglobal.net

Mid Rivers Mall Chess Club. Location: Food Court, Mid Rivers Mall, Mid Rivers Mall Drive, St. Peters. Chess played every Saturday, 8am-noon. Contact: e-mail Luke Brodlund at kalomundi_00@yahoo.com

St Peters Chess Club. Location: St. Peters Mathnasium. 235 Salt Lick Road, St. Peters Meets: every Friday night starting at 6pm. Contact: e-mail Tim Nesham at tim.nesham@gm.com

Soulard Chess Club. Location: Nadine's in Soulard, 1931 S. 12th St. (314) 436-3045 Meets: Tuesdays 6:30 Contact: Jeff Vollmer at jrvollm@sbcglobal.net

Indian Trails Branch Library. Location: St. Louis County Library 8400 Delport Drive (314) 428-5424 Meets Tuesdays 3:30 PM. Contact: any library employee Library information and map.

CLUBS IN OTHER AREAS OF MISSOURI

Mineral Area Chess Club. Location: Monday Nights from 7 to 9 p.m. at the Tourist Center on the Mineral Area College Campus in Park Hills. Contact Stan Jackson, 573 358-1996, or James Lyon, 573 756-6009, or by e-mail at jaaalyon@sbcglobal.net

Columbia -- Univ. of Missouri Chess Club. Location: Memorial Union (518 Hitt Street) Room S203 May-August: Lakota's Coffee, 24 S. Ninth St. Mondays 7 to 10 PM Contact: C. Ward at czar8196@tranquility.net Website: www.students.missouri.edu/~muchess

Jefferson City -- Jefferson City Chess Club. Location: Thomas Jefferson Middle School, Room 800 1201 Fairgrounds Rd, Jefferson City, MO Meets: Wednesdays 7 to 9pm Contacts: E-mail Bob Howe at bdhowe@yahoo.com or Thomas Rehmeier at jcchess89@yahoo.com or Cell Phone: 573-291-0852. Club Website: <http://www.chess.jp-koonce.net>

Springfield - MO State Univ. Chess Club. Location: Plaster Student Union, room 317-A. Meeting hours: Mondays 7-10pm Contact: Nick Beatty at Nbeatty@missouristate.edu Club Website: www.organizations.missouristate.edu/chess

Rolla -- UMR Chess Club. Location: Burgess Room - 2nd floor Havener Center. Meets: Tuesdays 6PM Student President: Alex Marler Contact/Info: e-mail Selden Trimble at strimble@rollanet.org

Springfield -- Springfield Chess Club. Location: Southside Senior Center 2215 S. Fremont Ave., Springfield, MO Meets: Friday 6:30 to 11PM USCF-rated events. Contact: Jim Baumlin (417) 831-6585 Website: www.geocities.com/SpringfieldChessClub

MISSOURI TOURNAMENT LIFE

Visit the official Missouri Tournament Clearinghouse
Website for future events (<http://www.mochess.org>)

Mar. 31-Apr. 1 Spring Open 5SS, G/120. Region I qualifier for Missouri State Invitational Championship. Days Inn, 3600 So Lindbergh Blvd., Sunset Hills, MO 63127. (GTD) \$200 First. Other prizes based on 50: \$100 each X, A, B, C, D, E, U1000, Unrated. EF: \$36 if rec'd by 3/28, \$45 at site. K-12 may enter at half fee but are eligible for only half of class prize. Reg: 8:30-9:30. Rds: 10-2:30-7; 9:30-2. MCA membership required for MO residents, available at site for \$5. HR: \$49.75, 314 965-9733; mention chess. Adv. Ent/Info: Missouri Chess Association, 449 W Jefferson Ave., St. Louis, Mo 63122. 314 822-5334.

Apr. 21, \$5 PLAY FOR RATING OPEN (3SS, Game/90), The Chess Club at Vivion West Shopping Mall (North Kansas City), 2314 NW Vivion Rd, Kansas City MO 64150. EF: \$5 by April 19th. \$10 onsite. Memb. Req'd: \$5. OSA. Reg: Between 9:30-10:00AM. Rds: 1st Round 10AM. One half- point bye. ENT: Ken Fee 1537 Baker St. Liberty, MO 64068 Club Phone 816-505-1615 PAYPAL to chessclub@powerpawn.net. INFO: chessclub@powerpawn.net. www.powerpawn.net. Tournament Director; Wayne Bartlett.

April 28 - 29 – Saint Louis Open – Sunset Hills (StL)

2007 Missouri State Invitational Chess Championship Qualifying Event

6 GPP, 5SS, G/120. Days Inn, 3660 S. Lindbergh Blvd, Sunset Hills, MO 63127 \$\$ Guaranteed: \$300-1st Place, Class Prizes b/60: \$150-1st in each X, A, B, C, D, E, U1000, Unr. Entry fee: \$45 if received by 4/25, \$50 at site. K-12 may enter for half entry fee but are only eligible for half prizes. Reg: 8:30-9:30; Rds: 10:00-2:30-7:00, 9:30-2:00. MCA membership required for MO residents, available on site from \$5. Hotel: \$45.75/night 314-965-9733 mention CHESS. Advanced entries/Info: Missouri Chess Association, 449 W. Jefferson Ave., Apt. B, St. Louis, MO 63122, 314-822-5334

Jun 16. The 6th Annual Club Championship.

4SS G60. The Chess Club at Vivion West Shopping Mall (North KC), 2512 NW Vivion Rd., Kansas City MO 64150. 816-587-1912. Reg: Sat 9-10AM RDS. Sat 10/12/2:30/4:30. 1/2 Point Bye. Ent \$25 by 6/12 \$35 Site. Sections: Open/U1600. Prizes 1st Open \$100 & 1st U1600 \$100. USCF/MCA/OSA. Entry/Info: Ken Fee 1537 Baker St. Liberty, MO 64068. PAYPAL to chessclub@powerpawn.net. Flyer at www.powerpawn.net

Jun. 29, The Chess Club's 5th Year Birthday Bash Tournament.

Come share free pizza, cake and drinks between 6-7 even if you do not plan to play! 3SS, Game/45, The Chess Club at Vivion West Shopping Mall (North Kansas City), 2512 NW Vivion Rd, Riverside MO 64150. EF: \$25 by Jun 27th. \$30 onsite. USCF/MCA/OSA. \$\$GTD: \$225. \$75 1st Open/U2000 1st \$75/U1600 1st \$75. Accelerated pairings! Reg: Between 6-7 PM. Rds: 1st Round

7PM. No Byes Available. ENT: Ken Fee 1537 Baker St. Liberty, MO 64068 Club Phone 816-587-1912 PAYPAL to chessclub@powerpawn.net. INFO: chessclub@powerpawn.net. www.powerpawn.net.

July 14 - 15 – Missouri Class Championship – Columbia

2007 Missouri State Invitational Chess Championship Qualifying Event

5SS, G/120. Best Western Columbia Inn, 3100 I-70 Dr. SE, Columbia, MO 65201. \$\$b/7 in each class : \$100-1st \$50-2nd each class: M/X, A, B, C, D, E, U1000/Unr. Entry fee: \$30 if received by 7/7, \$35 at site. Reg: 8:30-9:30; Rds: 10:00-2:30-7:00, 9:30-2:00. MCA membership required for MO residents, available on site from \$5. Hotel: \$74.95/night, Free Wi-Fi & breakfast, 573-474-6161 mention CHESS. Advanced entries/Info: Thomas Rehmeier, 5217 Denice Street, Jefferson City, MO 65109; (573) 291-0852

MISSOURI SCHOLASTIC TOURNAMENT LIFE

Sat. Mar. 31st **KCSCA CHAMPIONSHIP @ UMKC** The University of Missouri at Kansas City (UMKC) campus; University Center; 5000 Rockhill Rd., KC, MO 64110

Apr.13-15 2007 National High School (K-12) Championship Missouri

7SS, G/120. Hyatt Regency Crown Center, New Exhibit Hall, 2345 McGee Street, Kansas City, MO 64108. 816-421-1234 chess rate \$117 s/quad. 5 sections: K 12 Championship; K 12 Under 1500; K 12 Under 1200, K12 Under 900, Unrated. Prizes: Trophies for top 25 players and teams in each section based on attendance average during recent years. Also class trophies to the top three in the following classes: K-12 Championship, 1600 – 1799, 1400 – 1599, Under 1400. Teams: A team must have at least 2 players, although no maximum number of players. The top 4 scores in any section will count for the team score. All on the team must attend the same school. Special Events: National High School Bughouse Championship: Thursday 11am. National High School Blitz Championship: Thursday 5pm. Main Event rounds: Friday: 1- 7pm; Saturday: 9 am-2:00 pm-7:00 pm; Sunday: 9 am-2:00 pm. Opening ceremony: 12:30 pm Friday. Awards: 7PM (approximate) Sunday. Coaches and Parents meeting: 11 am Friday. Tournament Feedback meeting: 9:30 am. Sunday Scholastic meeting: 2:30 pm. Sat Coaches Forum 7:00 Pm Saturday. Parents & Friends Tournament: 4SS: Saturday 10:30 am-12:30-2:30-4:30. Onsite registration only, Rated and Unrated section. New! Trophies for Parent and Child combined results. EF: \$40 if p/m by March 19, \$60 if p/m by April 2, \$75 after April 2 or \$80 at site. Blitz EF: \$15 per player / \$20 on site or if after April 2. Bughouse entry: onsite only \$25 per team. 1/2 pt bye any round except 7 if requested in advance (limit 1). Please bring clocks. Sets and score sheets provided. USCF membership required. Any roster changes made onsite will incur a \$20 change fee. Team rooms available events@uschess.org. February rating supplement will be used. For additional information www.uschess.org/tournaments/2007/hs/. Mail entries to: U.S. Chess Federation, Attn: National High School, P.O. Box 3967, Crossville, TN 38557.

Missouri State Championship Format

In order to participate for the Missouri State Championship, a player must win one of the qualifying tournaments during the year. The previous Missouri State Champion receives an automatic bid. Six players will play a five game round-robin at the 2007 Missouri Open.

The 2007 Missouri State Championship qualifying tournaments are as follows.

2006 Missouri Invitational won by Ron Luther

2006 Missouri Open won by Francis Crow

2007 Kansas City Open won by Frank Smith

2007 St. Louis Open - April 28-29

2007 Missouri Class - July 14-15 in Columbia

2007 St. Louis Region One - March 31 - April 1



Return Address
The Chess Club
2314 NW Vivion Road
Riverside MO 64150-9424