



MISSOURI CHESS ASSOCIATION  
[www.mochess.org](http://www.mochess.org)  
SERVING MISSOURI CHESS SINCE 1973

# MISSOURI CHESS BULLETIN

VOLUME 34, NUMBER 4  
FALL, 2007



SAINT LOUIS TOURNAMENT DIRECTOR AL HOWLETT

# **2007-2008 MISSOURI CHESS ASSOCIATION BOARD OF DIRECTORS**

## **REGION 1 – SAINT LOUIS AREA**

Bill Wright – TREASURER – 449 West Jefferson, Apartment B, Saint Louis, Missouri-63122  
Ed Baur – PRESIDENT – 7138 Lindenwood, Saint Louis, Missouri-63109  
John Weidner – SECRETARY – 1943 Tower Bridge Terrace, Saint Louis, Missouri-63146

## **REGION 2 – KANSAS CITY AREA**

Ken Fee – 1537 Baker, Liberty, Missouri-64068  
Bob Holliman – Post Office Box 871, Independence, Missouri-64055  
Joe Conklin – 4145 Holmes, Kansas City, Missouri-64110

## **REGION 3 – CENTRAL MISSOURI AREA**

Bob Howe – 4403 Gage, Columbia, Missouri-65203  
Thomas Rehmeier – VICE PRESIDENT – 5217 Denice – Jefferson City, Missouri-65109  
Tim Campbell – 6104 East Sharon, Columbia, Missouri-65202

# **MISSOURI CHESS ASSOCIATION MEMBERSHIP MISSOURI CHESS BULLETIN SUBSCRIPTIONS**

The MISSOURI CHESS BULLETIN is the official publication of the MISSOURI CHESS ASSOCIATION. MISSOURI CHESS ASSOCIATION membership, required for participation in all tournaments sponsored by the MISSOURI CHESS ASSOCIATION and some other tournaments, includes subscription to the MISSOURI CHESS BULLETIN.

## **YEARLY MEMBERSHIP RATES**

REGULAR(includes subscription to the MISSOURI CHESS BULLETIN) – \$12.00  
REGULAR FAMILY(includes subscription to the MISSOURI CHESS BULLETIN) - \$18.00  
SCHOLASTIC(includes subscription to the MISSOURI CHESS BULLETIN) – \$8.00  
SCHOLASTIC FAMILY(includes subscription to the MISSOURI CHESS BULLETIN) – \$12.00  
ECONOMY(no MISSOURI CHESS BULLETIN subscription) – \$5.00  
ECONOMY FAMILY(no MISSOURI CHESS BULLETIN subscription,) – \$10.00  
AFFILIATE MEMBERSHIP – \$10.00 per year  
PATRON MEMBERSHIP – \$25.00 per year

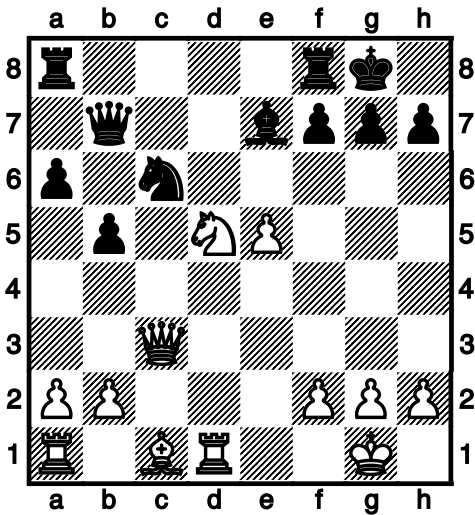
## **MEMBERSHIP APPLICATIONS AND ADDRESS CHANGES**

Wayne Bartlett, Membership Coordinator, Post Office Box 417, Oak Grove, Missouri-64057

# CONTENTS

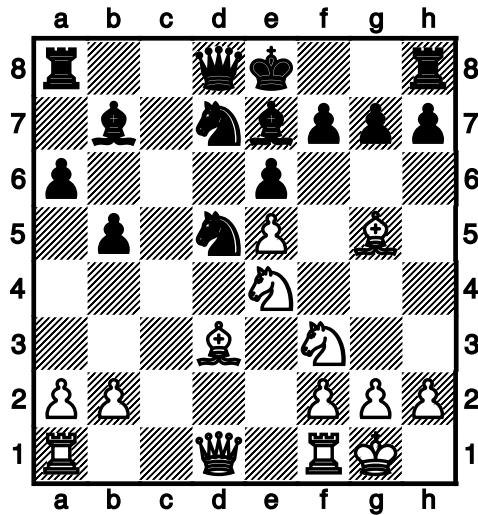
MISSOURI CHESS BULLETIN FALL ISSUE – page 3  
 2007 MISSOURI OPEN TOURNAMENT – page 4  
 2007 MISSOURI GRADE CHAMPIONSHIPS TOURNAMENT – page 8  
 FALL, 2007 BOARD OF DIRECTORS MEETING – page 9  
 2007 GENERAL MEMBERSHIP MEETING – page 11  
 TOURNAMENT DIRECTOR AL HOWLETT – page 12  
 SAINT CHARLES OPEN TOURNAMENT – page 13  
 CHESS BENEFACTOR SELDEN TRIMBLE – page 14  
 IMPROVING MISSOURI CHESS – page 15  
 GATEWAY CHESS LEAGUE TOURNAMENT – page 17  
 GATEWAY CHESS LEAGUE BOARD TOURNAMENT – page 19  
 CHESS PROMOTER BILL WRIGHT – page 20  
 KNIGHT'S TOUR – page 21  
 TOURNAMENT SCHEDULE – page 22

WHITE TO MOVE



1W-Qxc6!(1B-Qxc6, 2W-Nxe7+!)

WHITE TO MOVE



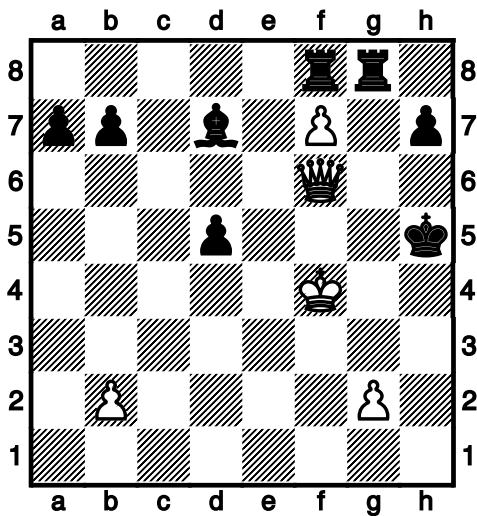
1W-Nd6+!(1B-Bxd6, 2W-Bxd8)

# MISSOURI CHESS BULLETIN FALL ISSUE

By Ed Baur

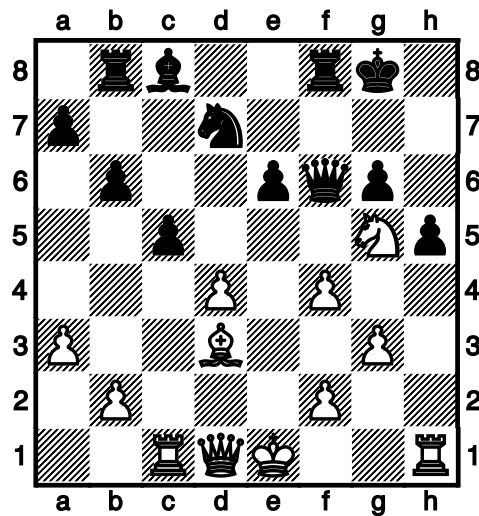
As you are aware the Fall, 2007 issue of the MISSOURI CHESS BULLETIN late. I accepted the position of acting editor in time to publish the SUMMER, 2007 issue two months late in September. I decided to publish the Fall, 2007 issue one month late in November. I did not get the issue done time, and it went to press one month late in December. The Board of Directors appointed Bob Howe and and Thomas Rehmeier the bulletin editors. They are responsible for publishing the Winter, 2008 edition and subsequent editions. The Winter, 2008 issue will be published one month late in February, and the Spring, 2008 issue on time in April. There are too many of my articles and too many of my games in this bulletin, because I did not have other material. Tournament organizers can help by sending tournament articles, pictures and games to Thomas [Rehmeier\(jcchess89@yahoo.com\)](mailto:Rehmeier(jcchess89@yahoo.com)).

WHITE TO MOVE



1W-fxg8(N), 1B-Rxf6+, 2W-Nxf6+!

WHITE TO MOVE



1W-Nh7!(1B-Kxh7, 2W-Qxh5+, 2B-Kg8, Qh7++ or 2B-Kg7, 3W-Qh7++)

# 2007 MISSOURI OPEN TOURNAMENT

By Ed Baur

The 2007 Missouri Open Tournament was played on Saturday, September 29 and Sunday, September 30 at the Days Inn in Columbia. A total of forty-nine players from seven states participated. Ronald Luther won the MISSOURI INVITATIONAL division and an invitation to the 2008 MISSOURI INVITATIONAL with a perfect 4 and 0 record. The invitational division was reduced to five players when Francis Crow

withdrew after the second round.

Based on the modified median tiebreak system, Jim Davies was the highest scoring Missouri player in the MISSOURI OPEN division with three wins and a draw. Jim won an invitation to the 2008 MISSOURI INVITATIONAL Brad Herbst won the MISSOURI RESERVE division with four wins and a draw

## MISSOURI INVITATIONAL

|   | NAME              | RATING | ROUND 1 | ROUND 2 | ROUND 3 | ROUND 4 | ROUND 5 | SCORE |
|---|-------------------|--------|---------|---------|---------|---------|---------|-------|
| 1 | RONALD LUTHER     | 2216   | W-5     | N       | W-2     | W-3     | W-4     | 4.0   |
| 2 | JAMES VOELKER     | 2106   | W-3     | D-5     | L-1     | W-4     | N       | 2.5   |
| 3 | NATHANIEL SWINGER | 835    | L-2     | D-4     | N       | L-1     | W-5     | 1.5   |
| 4 | FRANK SMITH       | 1818   | N       | D-3     | D-5     | L-2     | L-1     | 1.0   |
| 5 | BOB HOLLIMAN      | 2100   | L1      | D-2     | D-4     | N       | L-3     | 1.0   |

## EXTRA GAMES

|   | NAME          | RATING | ROUND 1 | ROUND 2 |
|---|---------------|--------|---------|---------|
| 1 | RONALD LUTHER | 2216   | N       | W-3     |
| 2 | FRANK SMITH   | 1818   | D-3     | N       |
| 3 | FRANICS CROW  | 1940   | D-2     | L-1     |

## MISSOURI OPEN

|    | NAME                | RATING | ROUND 1 | ROUND 2 | ROUND 3 | ROUND 4 | ROUND 5 | SCORE | TIE BREAK |
|----|---------------------|--------|---------|---------|---------|---------|---------|-------|-----------|
| 1  | ERIK PATCHELL(KY)   | 2063   | D-11    | W-15    | D-4     | W-8     | W-2     | 4.0   |           |
| 2  | TIM STEINER(KS)     | 2017   | W-14    | W-12    | W-7     | W-6     | L-1     | 4.0   |           |
| 3  | ZEBEDEE FORTMAN(MO) | 2050   | W-15    | L-6     | W-13    | W-12    | D-5     | 3.5   | 10.5      |
| 4  | JAMES DAVIES(MO)    | 2010   | W-13    | L-7     | D-1     | W-10    | W-6     | 3.5   | 12.5      |
| 5  | KEVIN JOHNSON       | 2000   | W-9     | L-8     | W-17    | W-7     | D-3     | 3.5   |           |
| 6  | NICK KARLOW         | 1917   | W-17    | W-3     | W-8     | L-2     | L-4     | 3.0   |           |
| 7  | SELDEN TRIMBLE      | 1914   | W-18    | W-4     | L-2     | L-5     | W-13    | 3.0   |           |
| 8  | BRAD SCHLOSSER      | 1850   | W-19    | W-5     | L-6     | L-1     | W-12    | 3.0   |           |
| 9  | WILLIAM TONG        | 1667   | L-5     | W-18    | L-12    | D-15    | W-17    | 2.5   |           |
| 10 | DOUGLAS HOWE        | 1602   | L-12    | W-14    | W-11    | L-4     | H       | 2.5   |           |
| 11 | TAPIWA GWAZE        | 1959   | D-1     | L-13    | L-10    | D-14    | W-15    | 2.0   |           |
| 12 | STEVN BANGE         | 1895   | W-10    | L-2     | W-9     | L-3     | L-8     | 2.0   |           |
| 13 | THOMAS REHMEIER     | 1703   | L-4     | W-11    | L-3     | W-17    | L-7     | 2.0   |           |
| 14 | MCHAEL SHULER       | 1646   | L-2     | L-10    | D-19    | D-11    | W-18    | 2.0   |           |
| 15 | THOMAS GAUL         | 1815   | L-3     | L-1     | W-18    | D-9     | L-11    | 1.5   |           |
| 16 | JACOB WILKINS       | 1625   | N       | N       | N       | N       | W-19    | 1.0   |           |
| 17 | DAN HOLMES          | 1639   | L-6     | W-19    | L-5     | L-13    | L-9     | 1.0   |           |
| 18 | EARNEY PATRICK      | 1624   | L-7     | L-9     | L-15    | W-19    | L-14    | 1.0   |           |
| 19 | KEN WEST            | 1371   | L-8     | L-17    | D-14    | L-18    | L-16    | 0.5   |           |

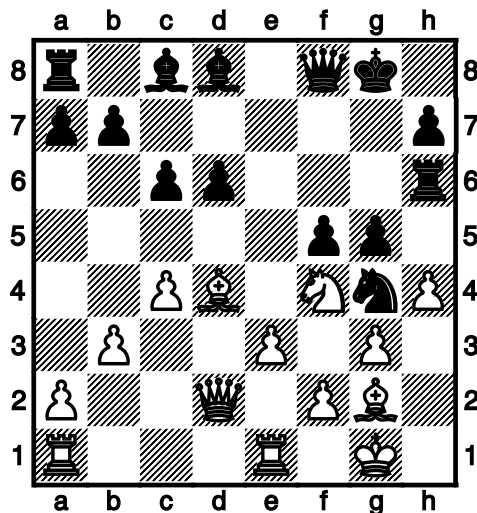
## MISSOURI RESERVE

|    | NAME             | RATING | ROUND 1 | ROUND 2 | ROUND 3 | ROUND 4 | ROUND 5 | SCORE |
|----|------------------|--------|---------|---------|---------|---------|---------|-------|
| 1  | BRADLEY HERBST   | 1590   | W-5     | W-7     | D-6     | W-2     | W-3     | 4.5   |
| 2  | BOB HOWE         | 1525   | W-12    | W-10    | W-15    | L-1     | W-7     | 4.0   |
| 3  | BYRON WILLIAMSON | 1491   | W-9     | W-19    | D-4     | W-6     | L-1     | 3.5   |
| 4  | ARJUN KHURANA    | 1440   | H       | W-14    | D-3     | W-15    | D-6     | 3.5   |
| 5  | TIM CAMPBELL     | 1343   | L-1     | H       | W-20    | W-19    | W-10    | 3.5   |
| 6  | EDWARD BAUR      | 1500   | W-8     | W-11    | D-1     | L-3     | D-4     | 3.0   |
| 7  | RICHARD FOX      | 1485   | W-20    | L-1     | W-13    | W-18    | L-2     | 3.0   |
| 8  | MARGARET HUA     | 1235   | L-6     | W-23    | D-10    | D-11    | W-17    | 3.0   |
| 9  | JAKE AMANN       | 1149   | L-3     | W-24    | L-12    | W-16    | W-19    | 3.0   |
| 10 | WILLIAM WRIGHT   | 1400   | W-24    | L-2     | D-8     | W-13    | L-5     | 2.5   |
| 11 | CHARLES WARD     | 1364   | W-21    | L-6     | H       | D-8     | D-12    | 2.5   |
| 12 | AARON PATRICK    | 1295   | L-2     | D-20    | W-9     | D-14    | D-11    | 2.5   |
| 13 | MOHAN RAO        |        | W-23    | D-16    | L-7     | L-10    | W-22    | 2.5   |
| 14 | LEROY ASHER      | 1062   | H       | L-4     | W-22    | D-12    | D-20    | 2.5   |
| 15 | SAM MATTHIS      | 1541   | W-18    | W-17    | L-2     | L-4     | N       | 2.0   |
| 16 | ROGER BRACHT     | 1475   | H       | D-13    | L-18    | L-9     | W-23    | 2.    |
| 17 | VENKAT IYER      | 1454   | N       | L-15    | L-19    | W-23    | L-8     | 2.0   |
| 18 | MIKE COY         | 1343   | L-15    | W-21    | W-16    | L-7     | N       | 2.0   |
| 19 | RAY BENNETT      | 1362   | W-22    | L-3     | W-17    | L-5     | L-9     | 2.0   |
| 20 | ROHIT RAO        | 1004   | L-7     | D-12    | L-5     | W-21    | D-14    | 2.0   |
| 21 | NIDHI KHURANA    | 461    | L-11    | L-18    | H       | L-20    | W-24    | 1.5   |
| 22 | JABEZ CAMPBELL   | 431    | L-19    | H       | L-14    | W-24    | L-13    | 1.5   |
| 23 | BRIAN WHITMIRE   |        | L-13    | L-8     | W-24    | L-17    | L-16    | 1.0   |
| 24 | JAMES DORAN      | 730    | L-10    | L-9     | L-23    | L-22    | L-21    | 0.0   |

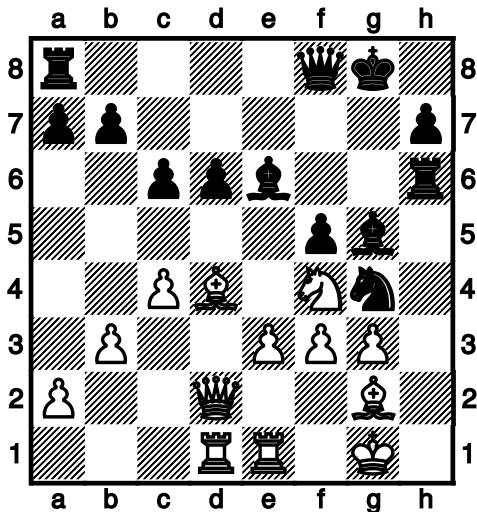
White, Selden Trimble – Black, Jim Davies  
Queen Pawn Game – Dutch Defense  
Notes by Selden Trimble

1W-d4(I got to play with the famed Jim Davies chess pieces. The wear on them shows that they have been around a long time. When I see them, I always wonder at the many people who have played with them.), 1B-e6, 2W-c4, 2B-f5(The Dutch Defense is very solid. I decided to play a line that puts a knight on square-f4.), 3W-Nc3, 3B-Nf6, 4W-g3, B-Be7, 5W-Bg2, 5B-OO, 6W-Nh3, 6B-d6, 7W-OO, 7B-Nc6, 8W-Nf4, 8B-Qe8, 9W-d5(9W-d5 guarantees that the white f4-knight cannot be driven off by a black pawn push to square-e5.), 9B-exd5, 10W-c3Nxd5(White has a well placed knight on square-f4.), 10B-Bd8, 11W-Nxf6+, 11B-Rxf6, 12W-b3, 12B-Ne5, 13W-Bb2, 13B-c6, 14W-Re1(14W-Re1 is an error. I did not consider 14B-Ba5.), 14B-Ba5, 15W-Rf1, 15B-Bb6(The black bishop occupies a good diagonal and Black gains a tempo to boot.), 16W-e3, 16B-Rh6, 17W-h4, 17B-Ng4, 18W-Bd4(I am not interested in letting White have tactical

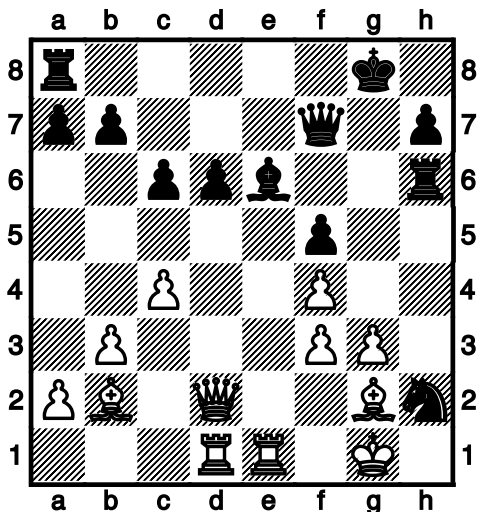
shots on square-e3.), 18B-Bd8, 19W-Re1, 19B-Qf8, 20W-Qd2, 20B-g5(20B-g5 launches an attack on the white king, but leaves the black king awfully exposed.)



21W-hxg5, 21B-Bxg5, 22W-a1Rd1, 22B-Be6(22B-Be6 is an error. If Black plays 22B-Bd7, then White retreats the d4-bishop to square-b2, and has a perfectly decent game), 23W-f3



23B-Bxf4(If Black plays 23B-Ne5, then the continuation is 24W-Nxe6, 24B-Rxe6, 25W-f4, forking the black bishop and the black knight.), 24W-xf4, 24B-Nh2(24B-Nh2 allows 25W-Rxe6, 25B-Rxe6, 26W-Kxh2, and White exchanges a rook for two minor pieces. I have other ideas.), 25W-Bb2(I prefer a kingside attack over an attempt to win the black knight. The black knight cannot move and the overworked black rook defends it and the black e6-bishop. 25W-Bb2 threatens the black d6-pawn, but there is more than that.), 25B-Qf7(Perhaps Black is trying to get counterplay with 26B-Qh5)



26W-Qc3(26W-Qc3 threatens 27W-Qh8++. If Black plays 26B-Rf6, then White wins the black rook with 27W-Qxf6, and the black knight is trapped.), 26B-Kf8, 27W-Qh8+, 27B-Qg8(If Black

plays 27B-Ke7, then White plays 28W-Qxa8 and threatens 29W-Qxb7+ and Black has no time to play the queen to square-h5.), 28W-Bg7+, 28B-RESIGN(If Black plays 28B-Kf7, then the continuation is 29W-Qxg8+, 29B-Rxg8, 30W-Bxh6, and the black knight is trapped. Jim Davies is a real good chess player. I am happy to play him, and even happier to beat him.)

White, Jim Voelker – Black, Nathan Swinger  
King Pawn Game – Sicilian Defense

1W-e4, 1B-c5, 2W-d4, 2B-cxd4, 3W-c3, 3B-dxc3, 4W-Nxc3, 4B-Nc6, 5W-Nf3, 5B-d6, 6W-Bc4, 6B-a6, 7W-Bg5, 7B-Nf6, 8W-h3, 8B-e6, 9W-OO, 9B-Be7, 10W-Qe2, 10B-OO, 11W-f1Rd1, 11B-Bd7, 12W-e5, 12B-Nxe5, 13W-Nxe5, 13B-dxe5, 14W-Qxe5, 14B-Qc8, 15W-a1Rc1, 15B-Bc6, 16W-Ne2, 16B-Nd7, 17W-Qe3, 17B-Bxg5, 18W-Qxg5, 18B-Qd8, 19WQg3, 19B-Qf6, 20W-Nd4, 20B-Nb6, 21W-Nxc6, 21B-Nxc4, 22W-Rxc4, 22B-bxc6, 23W-Qc3, 23B-Qxc3, 24W-bxc3, 24B-f8Rc8, 25W-Rd6, 25B-c5, 26W-a4, 26B-Kf8, 27W-Rd7, 27B-Ke8, 28W-Rb7, 28B-a8Rb8, 29W-Ra7, 29B-Rc6, 30W-Rf4, 30B-f5, 31W-Rxg7, 31B-Rb3, 32W-Rh4, 32B-Rxc3, 33W-h4Rxh7(threatens 34W-Rh8++), 33B-Kf8, 34W-Ra7(threatens 35W-Ra8++), 34B-Kg8, 35W-h7Rg7+, 35B-Kf8, 36W-g7Rf7+, 36B-Kg8, 37W-f7Rd7(threatens Ra8++), 37B-Rc8 38W-Rxa6, 38B-Rc1+, 39W-Kh2, 39B-c4, 40W-Rxe6, 40B-c3, 41W-e6Re7, 41B-Rf1, 42W-Rc7, 42B-Rxc7, 43W-Rxc7, 43B-RESIGN

White, Jim Voelker – Black, Frank Smith  
King Pawn Game – Alekhine Defense

1W-e4, 1B-Nf6, 2W-e5, 2B-Nd5, 3W-d4, 3B-d6, 4W-c4, 4B-Nb6, 5W-f4, 5B-dxe5, 6W-fxe5, 6B-g6, 7W-Nc3, 7B-Bg7, 8-Be2, 8B-OO, 9W-Nf3, 9B-Nc6, 10W-Be3, 10B-Bg4, 11W-Qd2, 11B-e6, 12W-OOO, 12B-Qe7, 13W-Bg5, 13B-Qd7, 14W-Ne4, 14B-f5, 15W-exf5, 15B-Bh8, 16W-Ne5, 16B-Nxe5, 17W-dxe5, 17B-Qxd2+, 18W-Rxd2, 18B-Bxe2, 19W-Rxe2, 19B-Nxc4,

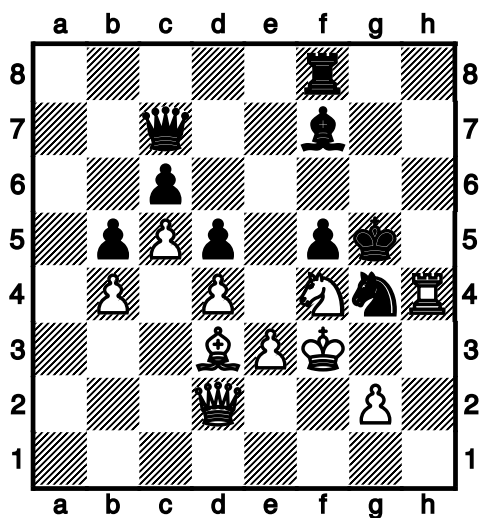
20W-Nc5, 20B-Kf7, 21W-Nxb7, 21B-a8Rb8,  
 22W-Nc5, 22B-f8Rd8, 23W-b3, 23B-Nb6,  
 24W-Rd1, 24B-Nd5, 25W-Ne4, 25B-Rb6, 26W-  
 Bh6, 26B-Ke8, 27W-Ng5, 27B-Rc6+,  
 28W-Kb2, 28B-Nxf6, 29W-Rxd8+, 29B-Kxd8,  
 30W-Nf7+, 30B-Ke7, 31W-Nxh8, 31B-Nd5,  
 32W-Bg5+, 32B-Kf8, 33W-Rf2+, 33B-Kg8,  
 34W-Bh6(threatens 35W-Rf8++), 34B-RESIGN

White, Venkat Iyer – Black, Ray Bennett  
 English Opening

1W-c4, 1B-Nf6, 2W-Nc3, 2B-g6, 3W-Nf3,  
 3B-Bg7, 4W-g3, 4B-OO, 5W-Bg2, 5B-d6,

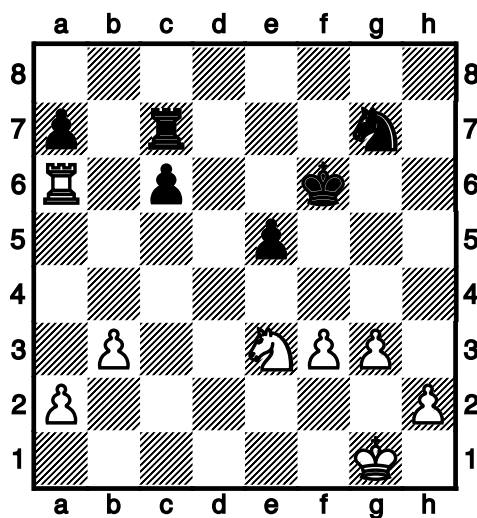
6W-OO, 6B-e5, 7W-Qb3, 7B-b8Nd7, 8W-d3,  
 8B-Nc5, 9W-Qc2, 9B-Re8, 10W-b4, 10B-e4, 11W-  
 bxc5, 11B-exf3, 12W-Bxf3, 12B-dxc5,  
 13W-Rb1, 13B-Rb8, 14W-a4, 14B-Ng4,  
 15W-Ne4, 15B-b6, 16W-Nxc5(The pin is mightier  
 than the sword.), 16B-Bf5, 17W-Na6, 17B-Ne5,  
 18W-Nxb8, 18B-Nxf3+, 19W-Kg2(19W-exf3,  
 19B-Bxd3!), 19B-Nd4, 20W-Qd1, 20B-Qxb8,  
 21W-e3, 21B-Qb7+, 22W-f3, 22B-Nxf3,  
 23W-Rxf3, 23B-Bg4, 24W-e4, 24B-f5, 25W-c5,  
 25B-fxe4, 26W-Qb3+, 26B-Kh8, 27W-Rf1,  
 27B-e3+, 28W-Kg1, 28B-Bh3, 29W-Rb2,  
 29B-Bxf1, 30W-Kxf1, 30B-Qh1+, 31W-Ke2,  
 31B-Qxh2+, 32W-RESIGN

WHITE TO MOVE



1W-Rh5+, 1B-Kf6(1B-Bxh5, 2W-Ne6+!),  
 2W-Rxf5+!(2B-Ke7, 3W-Kxg4 or 3B-Kg7,  
 3W-Kxg4!

WHITE TO MOVE



1W-Nd5+!



# 2007 MISSOURI GRADE CHAMPIONSHIPS TOURNAMENT

By Ed Baur

|   |  |
|---|--|
| <p>The 2007 MISSOURI GRADE CHAMPIONSHIPS TOURNAMENT was played on Saturday, October 27 on the campus of the University of Missouri. One hundred fifty-four students, representing fifty-one schools, participated. Ken Fee was the tournament director.</p>   | <p>3B-d6(indicates that BLACK intends to play a variation of the Philidor Defense), 4W-dxe5, 4B-dxe5, 5W-Qxd8+, 5B-Kxd8, 6W-Nc3, 6B-Bb4, 7W-Be3(7W-Bd2 is probably better), 7B-Bxc3+, 8W-bxc3, 8B-Nf6, 9W-OOO+, 9B-Bd7(9B-Ke7 is probably better), 10W-Bg5, 10B-h6, 11W-Bxf6, 11B-gxf6, 12W-g3, 12B-a5, 13-Bh3(attacks the pinned d7-bishop), 13B-f5, 14W-Bxf5, 14B-Ke7, 15W-Rxd7+(wins a minor piece and occupies the seventh rank with check), 15B-Ke8(15B-Kf6 is better because the king moves toward the center and the BLACK rooks remain connected), 16W-Rxc7(16W-h1Rd1 is probably better because it doubles rooks on the open file), 16B-Ne7, 17W-Bd7+(17W-h1Rd1 is probably better), 17B-Kd8, 18W-Rxb7, 18B-Ra6, 19W-Nxe5(threatens 20W-Nxf7+!), 19B-Rf6, 20W-Rd1(20W-f4 is probably better because it prevents the BLACK rook from capturing a pawn and occupying the seventh rank), 20B-Rh7, 21W-Nxf7+, 21B-h7Rxf7, 22W-Be6+, 22B-Ke8, 23W-Rb8+, 23B-Nc8, 24W-Rxc8+, 24B-Ke7, 25W-Bxf7, 25B-Kxf7, 26W-Rd7+, 26B-Ke6, 27W-Ra7, 27B-Rxf2, 28W-Rxa5, 28B-Rxh2, 29W-Rc6+, 29B-Kd7, 30W-Rg6, 30B-Rh1+, 31W-Kb2, 31B-Ke7, 32W-Ra7+, 32B-Kf8, 33W-Rb6(threatens 34W-Rb8++), 33B-RESIGN</p> |
| <p>INDIVIDUAL CHAMPIONS</p>   | <p>White, Andrew Robinson – Black, David Groom<br/>King Pawn Game – Damiano Defense</p>  |
| <p>Kindergarten – Kevin Guo<br/>Grade 1 – Ritik Sundaram<br/>Grade 2 – Justin Chen<br/>Grade 3 – Brian Kuo<br/>Grade 4 – George Bechthold<br/>Grade 5 – Jialin Ding<br/>Grade 6 – Sarah Sampei<br/>Grade 7 – Isaiah Gadson<br/>Grade 8 – John Bechthold<br/>Grade 9 – Arjun Khurana<br/>Grade 10 – Brad Schlosser<br/>Grade 11 – Teddy King<br/>Grade 12 – Spencer Conklin</p>  | <p>1W-e4, 1B-e5, 2W-Nf3, 2B-Bc5, 3W-Bc4, 3B-f6(indicates that BLACK intends to play the Damiano Defense), 4W-Nxe5, 4B-fxe5(4B-Qe7 is better because it forces the WHITE e5-knight to retreat and allows BLACK to play 5B-Qxe4+), 5W-Qh5+(after 5B-g6, then the best continuation is 6W-Qxe5+ and 7W-Qxh8, and after 5B-Ke7, then the best continuation is 6W-Qxe5+, 6B-Kf8, 7W-Qxc5+), 5B-Kf8, 6W-Qf7++</p>  |
| <p>TEAM CHAMPIONS</p>   |  |
| <p>Kindergarten – Saint Elizabeth Elementary<br/>Grade 1 – Saint Elizabeth Elementary<br/>Grade 2 – Pembroke Hill High<br/>Grade 3 – Central Christian Elementary<br/>Grade 4 – McKelvey Elementary<br/>Grade 5 – Central Christian Elementary<br/>Grade 6 – Pembroke Hill High<br/>Grade 7 – Gentry Middle<br/>Grade 8 – Bechthold<br/>Grade 9 – Crossroads High<br/>Grade 10 – Crossroads High<br/>Grade 11 – Crossroads High<br/>Grade 12 – Liberty High</p> |  |
| <p>White, Andrew Venable – Black, Jordan Persinger<br/>King Pawn Game – Philidor Defense</p>  |  |
| <p>1W-e4, 1B-e5, 2W-Nf3, 2B-Nc6, 3W-d4,</p>   |  |

## FALL, 2007 BOARD OF DIRECTORS MEETING

The Missouri Chess Association Board of Directors met Sunday, October 7 in Columbia. Ed Baur, Tim Campbell, Bob Holliman, Bob Howe, Thomas Rehmeier, John Wiedner and Bill Wright were present. Joe Conklin and Ken Fee were absent. A quorum was present.

The Board certified the Board of Directors election results.

The Board selected new officers. Ed Baur was elected president, Thomas Rehmeier was elected vice president, John Wiedener was elected secretary, and Bill Wright was reelected as treasurer.

The Board approved the minutes of the Spring, 2007 Board of Directors meeting.

The Board indicated appreciation for Jim Davies for his work as election commissioner, and will request that he serve as election commissioner for the 2008 election.

Bob Howe was selected as the new Missouri Chess Bulletin editor, and will be responsible for the Winter, 2008 issue, due for publication in January, 2008 and for future editions.

The Board indicated appreciation for Wayne Bartlett for his work as membership coordinator. Wayne indicated his willingness to continue as membership coordinator.

Bill Wright presented the treasurer's report.

The Board indicated appreciation to Thomas Rehmeier for his work as webmaster. Thomas indicated his willingness to continue as webmaster.

The Board indicated appreciation for Ed Baur for his work as scholastic coordinator. Ed indicated his willingness to continue as scholastic coordinator.

The Board decided Board of Directors meetings schedule. Board of Directors meetings are scheduled for the second Sunday of March with the summary published in the spring Missouri Chess Bulletin published in April, the second Sunday of June with the summary published in the summer Missouri Chess Bulletin published in July, the second Sunday of September with the summary published in fall Missouri Chess Bulletin published in October, and the second Sunday of December with the summary published in the Winter Missouri Chess Bulletin published in January.

The 2008 Missouri Scholastic Championship Tournament is scheduled for Saturday, February 2 in at the Holiday Inn Select in Columbia, and the 2009 Tournament is scheduled for the last Saturday in February at the Capital Plaza Hotel in Jefferson City. Profits or losses will be shared by the Gateway Chess League and the Kansas Scholastic Chess Association. The Missouri Chess Association will receive a \$1.00 tournament membership fee for each participant.

The Missouri Open Tournament and the Missouri Class Championships Tournament should be held at a mid-state location.

Bob Howe will submit a written proposal for revision of the Missouri Invitational Tournament.

Bob Holliman will organize the Kansas City Open Tournament in late May.

Bob Howe will organize the Missouri Class Championships Tournament in July.

The Board will request the Wayne Bartlett organize the Missouri Open Tournament in September.

The Denker Qualifier Tournament and the Polgar Qualifier Tournament are scheduled for April 12 at the Days Inn in Columbia.

Bob Howe prepared an information packet for new directors including legal documents, general information, and minutes for past meetings for review by the Board of Directors.

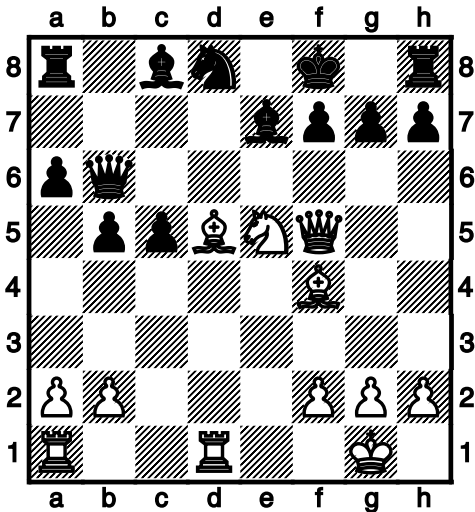
The Saint Loius Open Tournament is scheduled for April 28 and April 29 in Saint Louis.

Ed Baur pointed out that the members of the Board of Directors are elected to promote chess, and "mud slinging" has the opposite effect and is discouraged.

Tim Campbell will open dialog with officials of the Show Me Games.

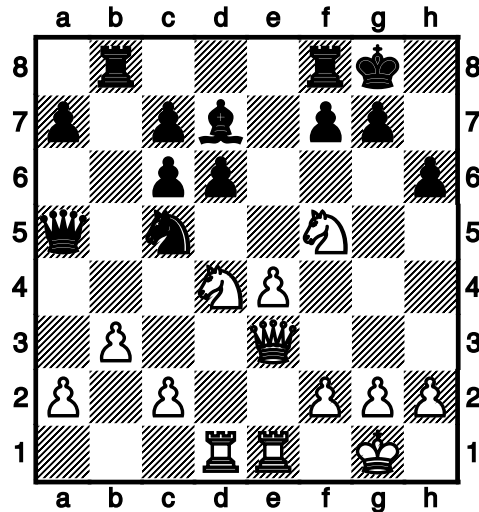
The December Board of Directors meeting is cancelled because of conflict with the Jefferson City Open Tournament. The next Board of Directors meeting is scheduled for March 9, 2008.

WHITE TO MOVE



1W-Qxc8!(1B-Rxc8, 2W-Nd7+!)

WHITE TO MOVE



1W-Nxc6, 1B-Bxc6, 2W-Ne7+, 2B-Kh8,  
3W-Nxc6!

## MISSOURI CHESS ASSOCIATION GENERAL MEMBERSHIP MEETING SUMMARY

The meeting was held Sunday, September 30, 2007.

Ed Baur presided in place of Ken Fee.

There are about 230 Missouri Chess Association members.

Bob Holliman said that the bylaws required a September Board of Directors meeting.

Bob Holliman insisted that Ken Fee be expelled from the Missouri Chess Association for life because of accusations of cheating made against Bob Holliman and Ron Luther.

A new member requested that there be more Missouri Chess Association activity in the Springfield and Joplin area. Bob Howe suggested that one of the Missouri Invitational qualifying tournaments be played in the area.

Ron Luther asked that organizers publish a profit and loss statement for each tournament.

A member suggested that all board members share responsibilities equally.

Mike Clark suggested that the Missouri Invitational system is flawed because only Missouri players can qualify. Clark also suggested the consideration of the use of proximity pairings.

Ed Baur suggested that the tournament be in one section.

Wayne Bartlett said that there is a United States Open Tournament and a United States Closed Tournament, and suggested that there should be a Missouri Open Tournament and a Missouri Closed Tournament, perhaps on different dates.

Bob Holliman said that he liked the round robin format for the Missouri Invitational Tournament.

Ron Luther addressed the withdrawal of Francis Crowe from the invitational, and suggested that the players be required to post a performance bond of \$100 to \$200.

Selden Trimble suggested that there be alternates, perhaps the highest rated players.

Bob Holliman suggested that the low turnout at the Missouri Open tournament was due to lack of publicity.

Jim Voelker suggested that the prize money for the Missouri Invitational Tournament be split in case of ties.

Bob Howe said that the prize money was not split to force players to play for wins.

# TOURNAMENT DIRECTOR AL HOWLETT

by Bill Wright

Al Howlett, the most active Saint Louis area tournament director for tournaments other than scholastic tournaments, is stepping aside after the Maryland Heights Swiss Tournament on December 1 to be able to participate as a competitor in tournaments.

Al has directed forty-eight tournaments, averaging thirty to thirty-five players, in recent years. Al learned to play chess after graduating from college, and within a year entered his first tournament. Four years later he directed his first unrated tournament at the Normandy Chess Club. He directed tournaments at the Normandy Chess Club for ten years, and directed tournaments in Florissant for two years. The last three years he has directed tournaments at the Hampton Inn in Maryland Heights. Several years ago Al taught chess classes at the Kirkwood Public Library, and recently taught a class on how to be a tournament director.

Al takes great satisfaction in seeing young players, especially Joseph Garnier, Alex Marler, Nick Karlow, Brad Schlosser, Henry Cao and Kevin Cao, improve their ratings in tournament play.



Tournament Director Al Howlett begins play against Grandmaster Maurice Ashley in a simultaneous exhibition

The Saint Louis Chess community owes great deal to Al, who has directed highly successful tournaments with dignity, and wishes him well in future efforts. Hopefully someone will step forward to fill Al Howlett's large shoes.

# SAINT CHARLES OPEN TOURNAMENT

By Ed Baur

The 2007 Saint Chalres Open Tournament, the second last tournament directed by Al Howlett, was contested on Saturday, November 3, in Saint Charles. Players representing Missouri, Illinois and Kentucky participated.

## INDIVIDUAL CHAMPIONS

Master and Expert – Kevin Johnson

Class A – Steve Bange and Joseph Garnier

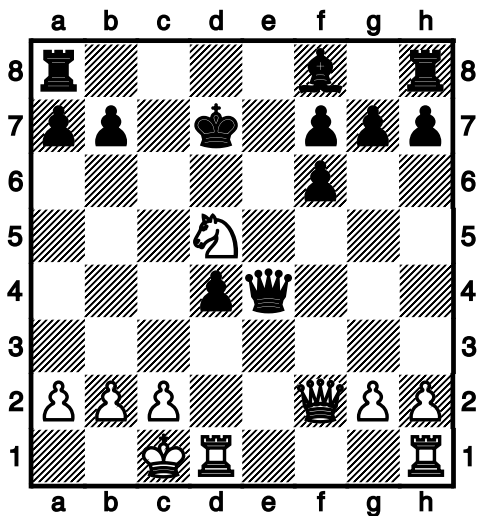
Class B – William Tong, Brad Herbst and Matt Angeli

Class C – Richard Pope

Class D – Quinton Mabins, Alexey Kazakevich, Erik Olsen, Zuban Chandran and Margaret Hua

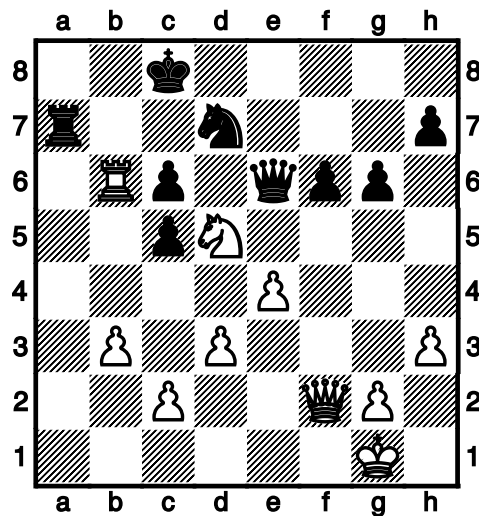
Novice – Richard Turner

WHITE TO MOVE



1W-Nxf6+, 1B-gxf6, 2W-Rxd4+!

WHITE TO MOVE



1W-Rxc6+, 1B-Qxc6, 2W-Ne7+!

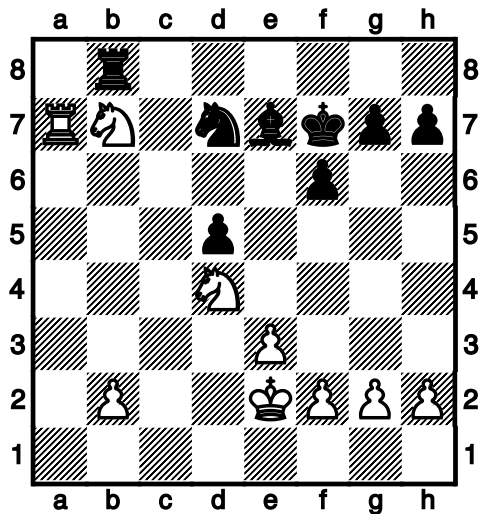
# CHESS BENEFACTOR SELDEN TRIMBLE

by Bill Wright

Long time Missouri Chess Association member and former Missouri Chess Association vice president Selden Trimble has donated chess equipment to two Rolla public schools and to a group of home school students within the past

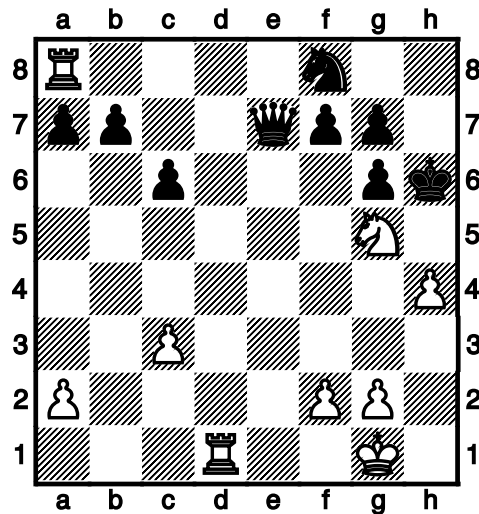
thirteen months. He has donated over twenty-five club chess sets and mats in order to promote scholastic chess. The students, school officials and the chess community commend Selden for his generosity.

WHITE TO MOVE



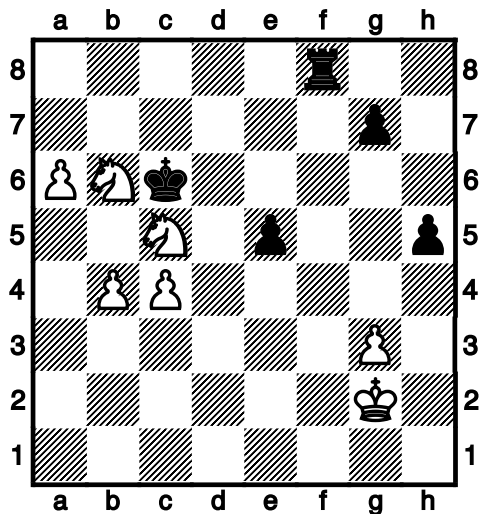
1W-Nd6+, 1B-Bxd6, 2W-Rxd7+, 2B-Be7,  
3W-Rxe7+, 3B-Kxe7, 4W-Nc6+!

WHITE TO MOVE



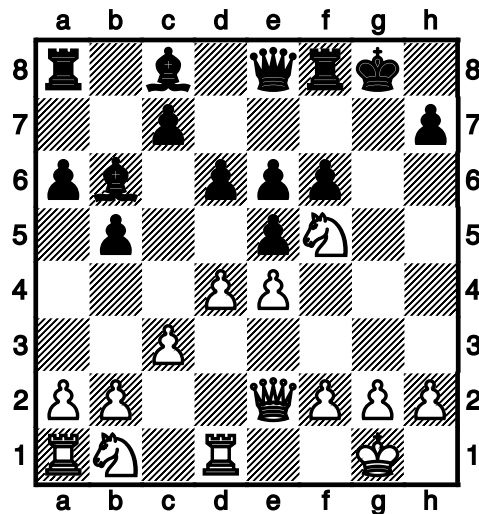
1W-Rxf8, 1B-Qxf8, 2W-Rd8, 2B-Qxd8(2B-Qc5,  
3W-Rh8++), 3W-Nxf7+!

WHITE TO MOVE



1W-b5+!(1B-Kxb6, 2W-Ne7+! or 1B-Kxc5,  
2W-Ne7+! or 2B-Kc7, 3W-Ne6+!)

WHITE TO MOVE



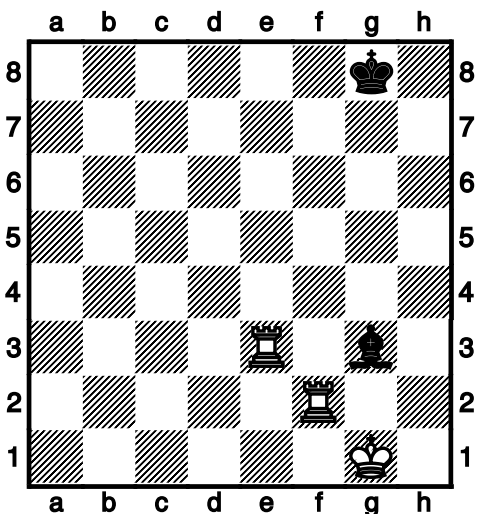
1W-Qg4+, 1B-Qg6(1B-Kh8, 2W-Qg7++ or  
1B-Kf7, 2W-Qg7++), 2W-Ne7+!

# IMPROVING MISSOURI CHESS

By Mike Clark

For the last year, I have coached and run tournaments for a local chess club. I noticed that kids, with decisive material advantage but unable to carry out simple checkmates, forced the pace of a tournament to slow to a crawl. So, the first thing a club of kids and beginners should learn is mating patterns because mating patterns occur at the end of all games. The following diagram illustrates a simple mating pattern.

WHITE TO MOVE

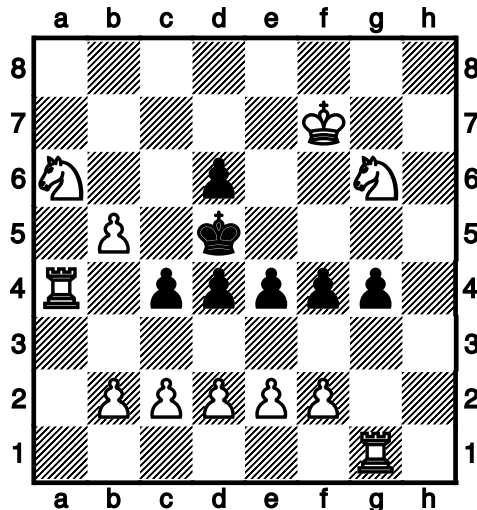


1W-Rxg3+, 1B-Kh7, 2W-Rh2++

After students understand most mating patterns, it is time to explain something that effects less games, like en passant. It took me a few years gathering the ways to teach the concept in a way that is the most memorable. Doing so is necessary because in a room of kids who go to chess tournaments and camps, there is often still some kids who do not understand the en passant rule. I remember Ed Baur had a favorite chess diagram to

show en passant. Ed claimed he showed the kids he coached the one diagram and then they would not have any en passant problems.

WHITE TO MOVE



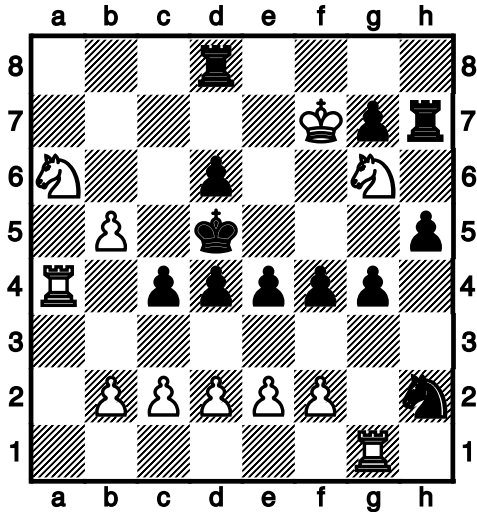
The solution is 1W-b4(threatens 2W-Nc7++), 1B-cxb4(en passant), 2W-c4+, 2B-dxc4(en passant), 3W-d4(threatens 4W-Nc7++), 3B-exd4(en passant), 4W-e4+, 4B-fxe4(en passant), 5W-f4(threatens 6W-Ne7++), 5B-gxf4(en passant), 6W-Rg5++.

A few months later a student found a faster solution: 1W-Rxg4(threatens Rg5++), 1B-d3, 2W-Rg5+, 2B-Kd4, 3W-e3+, 3B-fxe3, 4W-fxe3++.

Being a successful chess coach is not easy. Successful chess coaches are constantly improving their techniques and materials. So I changed the diagram until the en passant chain reaction was forced.



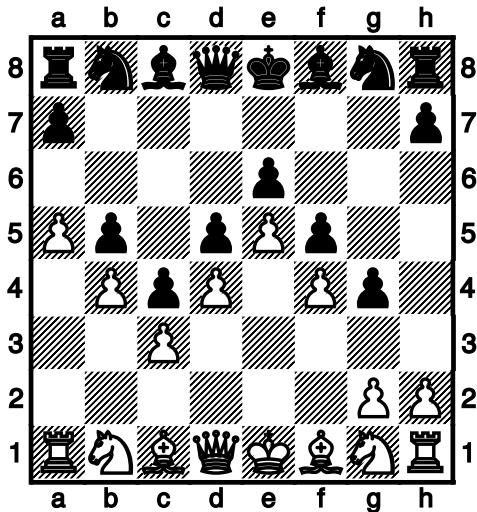
WHITE TO MOVE



The solution is 1W-b4, 1B-cxb4, 2W-c4+, 2B-dxc4, 3W-d4, 3B-exd4, 4W-e4+, 4B-fxe4, 5W-f4 5B-gxf4, 6W-Rg5++.

For another en passant puzzle, I put together the following diagram.

WHITE TO MOVE



The question is can WHITE capture any BLACK pawn? The answer is that WHITE can capture the BLACK b5-pawn if BLACK moved it from square-b7 to square-b5 on the last move.

In review, if you decide to become a chess coach, learn from people that have been successful coaches and find materials such as books, magazines diagrams positions puzzles and computer files, to use. Then organizes your information, modify your information, and find opportunities to practice. If you coach those beginning chess, working through the mating patterns is the best place to start. Soon after explain how to correctly capture a pawn en passant.

Then coach more advance topics. If any readers of this article want to receive any coaching on more advance topics, know anybody who could use some coaching, or if any readers want to talk about successfully coaching other people, they can come to one of my future events (details at <http://jeffersoncitychess.googlepages.com/home>).

# 2007 GATEWAY CHESS LEAGUE TOURNAMENT

By Ed Baur

The 2007-2008 Gateway Chess League season began with the 2007, Gateway Chess League Tournament, played Saturday, November 10 at O'Fallon High School. The Gateway Chess League is an organization of Saint Louis, area schools whose students compete in scholastic chess. The league sponsors competitions that determine the league champions, and six area tournaments and the state championship tournament. During the 2006-2007 season 1,089 students, representing 181 schools, played 6,252 games while participating in one or more of these events. A total of 238 students representing 53 schools, participated in the tournament.

## INDIVIDUAL CHAMPIONS

Grade 5 and Under – Jack Southwell  
 Grade 6 and Under – Adam Levine  
 Grade 8 and Under – Isaiah Gadson  
 Grade 9 and Under – Rio Pimentel  
 High School – Brad Scholsser

## TEAM CHAMPIONS

Grade 5 and Under – Central Christian Elementary  
 Grade 6 and Under – Hancock Elementary  
 Grade 8 and Under – Sperrang Middle  
 Grade 9 and Under – McKinley Junior  
 High School – Lindbergh High

White, Kyle Berry – Black, Mohammed Sidiqqi  
 English Opening

1W-c4, 1B-e5, 2W-Nc3, 2B-Nf6, 3W-Nf3,  
 3B-Nc6, 4W-g3, 4B-d5, 5W-cxd5, 5B-Nxd5,  
 6W-Bg2, 6B-Nxc3, 7W-bxc3, 7B-Bc5, 8W-Bb2,  
 8B-OO, 9W-d4, 9B-exd4, 10W-cxd4, 10B-Bb4+,  
 11W-Kf1, 11B-Re8, 12W-e3, 12B-Bg4, 13W-h3,  
 13B-Bh5, 14W-d5, 14B-Ne7, 15W-Qd4(threatens  
 16W-Qxg7++), 15B-f6, 16W-Qxb4, 16B-Qxd5,

17W-Qb3, 17B-Qxb3, 18W-axb3, 18B-c6,  
 19W-Bd4, 19B-a6, 20W-Nd2, 20B-a8Rd8,  
 21W-g4, 21B-Bg6, 22W-Be4, 22B-f5, 23W-gxf5,  
 23B-Bxf5, 24W-Bxf5, 24B-Nxf5, 25W-Nf3,  
 25B-Rf8, 26W-Ke2, 26B-f8Re8, 27W-a1Rd1,  
 27B-Nxd4+, 28W-Rxd4, 28B-Rxd4, 29W-Nxd4,  
 29B-c5, 30W-Nc2, 30B-Rc8, 31W-Rd1, 31B-c4,  
 32W-bxc4, 32B-Rxc4, 33W-Nd4, 33B-Kf7,  
 34W-Rb1, 34B-Rc7, 35W-Rb6, 35B-Re7,  
 36W-Nf5, 36B-Rd7, 37W-Nd6+, 37B-Ke6,  
 38W-Nxb7+, 38B-Kd5, 39W-Na5, 39B-Ra7,  
 40W-Kd3, 40B-Kc5, 41W-Rb7, 41B-Rxb7,  
 42W-Nxb7+, 42B-Kb6, 43W-Nd6, 43B-Kc5,  
 44W-Nf5, 44B-g5, 45W-f3, 45B-a5, 46W-Ng3,  
 46B-Kb4, 47W-Kc2, 47B-a4, 48W-e4, 48B-Kc4,  
 49W-Nf5, 49B-Kc5, 50W-Kc3, 50B-h5,  
 51W-Nh6, 51B-Kd6, 52W-Nf7+, 52B-Ke6,  
 53W-Nxg5+, 53B-Ke5, 54W-Kb4, 54B-a3,  
 55W-Kxa3, 55B-Kf4, 56W-h4, 56B-Ke5,  
 57W-Kb3, 57B-Kf4, 58W-Kc3, 58B-Ke5,  
 59W-Kd3, 59B-Kf6, 60W-Kd4, 60B-Ke7,  
 61W-Ke5, 61B-Kd7, 62W-Kf6, 62B-Ke8,  
 63W-e5, 63B-Kf8, 64W-e6, 64B-Ke8, 65W-e7,  
 65B-RESIGN

White, Taylor Tyre – Black, Greg Thompson  
 Ruy Lopez System

1W-e4, 1B-e5, 2W-Nf3, 2B-Nc6, 3W-Bb5, 3B-a6,  
 4W-Ba4, 4B-Nf6, 5W-OO, 5B-b5, 6W-Bb3  
 6B-d6, 7W-c3, 7B-Be7, 8W-d4, 8B-exd4,  
 9W-cxd4, 9B-Nxe4, 10W-Bd5, 10B-Bb7,  
 11W-Bxe4, 11B-OO, 12W-d5, 12B-Ne5,  
 13W-Nxe5, 13B-dxe5, 14W-Qh5(threatens  
 15W-Qh7++), 14B-g6, 15W-Qxe5, 15B-Bd6,  
 16W-Qc3, 16B-f6, 17W-Bh6, 17B-Be5,  
 18W-Qb3, 18B-Re8, 19W-d6+, 19B-Kh8,  
 20W-Qf7(threatens 15W-Qg7++), 20B-Bxh2+,  
 21W-Kh1, 21B-Rg8, 22W-Bxb7, 22B-Ra7,  
 23W-Bd5, 23B-Bxd6, 24W-Re1, 24B-Bc5,  
 25W-Bg7+, 25B-Rxg7, 26W-Re8+, 26B-Qxe8,  
 27W-Qxe8+, 27B-Rg8, 28W-Qxg8++

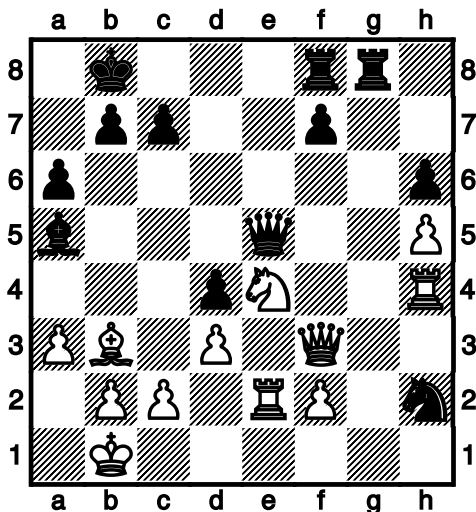
White, Rio Pimentel – Black, Spencer Barrett

King Pawn Game – Center Counter Defense

1W-e4, 1B-d5, 2W-exd5, 2B-Nf6, 3W-Nc3,  
3B-c6, 4W-Bc4, 4B-cxd5, 5W-Bb5+, 5B-Nc6,  
6W-d4, 6B-e6, 7W-Nf3, 7B-Bd6, 8W-OO,  
8B-OO, 9W-Be3, 9B-a6, 10W-Ba4, 10B-b5,  
11W-Bb3, 11B-Rb8, 12W-a4, 12B-b4, 13W-Ne2,  
13B-Bb7, 14W-c3, 14B-e5, 1W-dxe5, 15B-Nxe5,  
16W-Nxe5, 16B-Bxe5, 17W-cxb4, 17B-Bxb2,

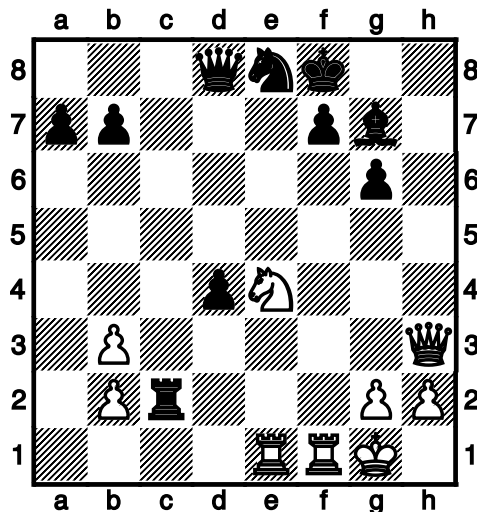
18W-Rb1, 18B-Be5, 19W-a5, 19B-Bc7, 20W-Rc1,  
20B-Qd6,(threatens 21B-Qxh2++) 21W-Bf4,  
21B-Qxb4, 22W-Bxc7, 22B-b8Rc8, 23W-Nf4,  
23B-Ne8, 24W-Bxd5, 24B-Bxd5, 25W-Nxd5,  
25B-Qa3, 26W-Nb6, 26B-Rxc7, 27W-Nd5,  
27B-Rxc1, 28W-Qxc1, 28B-Qxa5, 29W-Ne7+,  
29B-Kh8, 30W-Qe1, 30B-Qxe1, 31W-Rxe1,  
31B-Nf6, 32W-Ra1, 32B-Ra8, 33W-Nc6,  
33B-Nd7, 34W-Ra5, 34B-Re8, 35W-Rxa6,  
35B-Re1++

WHITE TO MOVE



1W-Qf6, 1B-Qxf6, 2W-Nxf6, 2B-Nf3, 3W-Rf4,  
3B-Nd2+, 4W-Ka2, 4B-Nxb3, 5W-Kxb3, 5B-Rh8,  
6W-Nd7+!

WHITE TO MOVE



1W-Rxf7+, 1B-Kg8(1B-Kxf7, 2W-Ng5+,  
2B-Qxg5(2B-Kg8, 3W-Qe6+, 3B-Kh8,  
4W-Nf7+!), 3W-Qe6+, 3B-Kf8, 4W-Qxe8++),  
2W-Ng5, 2B-Nf6(2B-Qxg5, 3W-Rxe8+, 3B-Kxf7,  
4W-Qe6++), 3W-Rxg7+, 3B-Kxg7, 4W-Ne6+!

# 2007 GATEWAY CHESS LEAGUE BOARD TOURNAMENT

By Ed Baur

The second event of the Gateway Chess League season was the the 2007-2008 Gateway Chess League Board Tournament. The tournament was played on Saturday, December 1, at Chaminade High School. A total of 266 students representing 66 schools, participated in the tournament.

## INDIVIDUAL CHAMPIONS

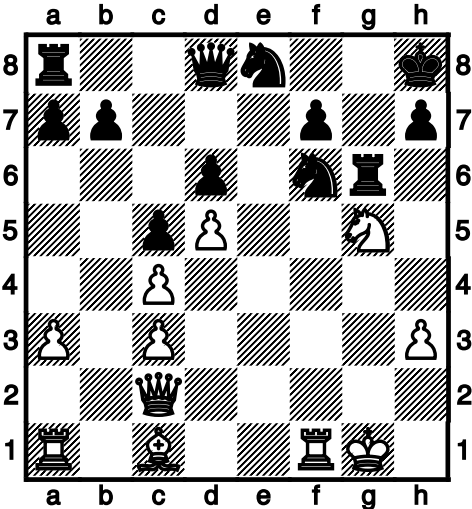
Grade 5 and Under – Samuel Stephens  
 Grade 6 and Under – Andrew Latuda  
 Grade 8 and Under – Isaiah Gadson  
 Grade 9 and Under – Xander Millsap

High School Board 4 – Michael Alley  
 High School Board 3 – Stephano Jeong  
 High School Board 2 – Tom Morrell  
 High School Board 1 – Brad Schlosser

## TEAM CHAMPIONS

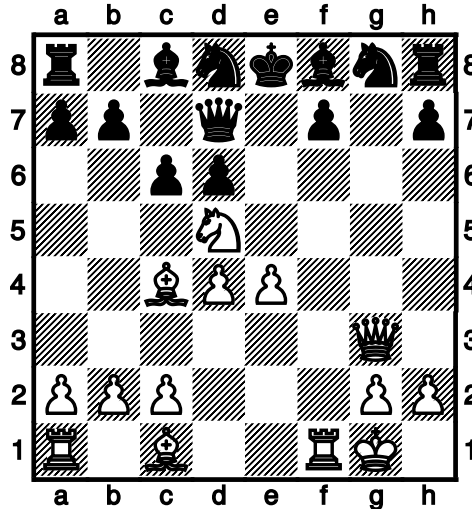
Grade 5 and Under – Central Christian Elementary  
 Grade 6 and Under – Central Christian Elementary  
 Grade 8 and Under – McKinley Junior High  
 Grade 9 and Under – Ladue High  
 High School – Parkway Central High

DIAGRAM 35 – WHITE TO MOVE



1W-Qxg6, 1B-fxg6, 2W-Nf7+!

DIAGRAM 36 – WHITE TO MOVE



1W-Qxg8, 1B-Rxg8, 2W-Nf6+, 2B-Ke7,  
 3W-Nxg8+, 3B-Ke8, 4W-Nf6+!

## CHES PROMOTER BILL WRIGHT

By Ed Baur

Bill Wright is one of the most active chess promoters in the Saint Louis area. Bill was born in Minneapolis, Minnesota, learned chess in 1942, served in the United States Marine Corps between 1946 and 1948, and graduated from Macalester College. Bill, father of three sons, John, Peter and Mark, and one daughter, Laura, resides with his wife, Ann, in Kirkwood.

Bill has coached chess at Good Shepherd School, Henry School, Mullanphy School, the Jewish Community Association, the Kirkwood Public Library, and since 2000 at Solomon Schechter School. Last season his team finished tied for first in Gateway Chess League competition. His top players included Joseph Dardick, Ben Berson, now attending Parkway North High School, Jacob Hanin, now attending Whitfield High School, and Max Levin, now living in California.

Bill and fifteen Solomon Schechter students are looking forward to Gateway Chess League competition, beginning February 17. Four of his top players are Alec Davison, David Selis, Noah Hartman and Andrew Hanin.

Bill is a life member of the National Rifle Association and a life member of the Marine Corps League.

As a chess promoter Bill has been very active.



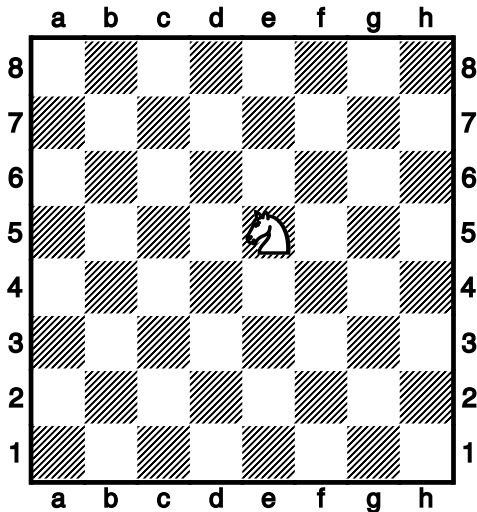
Chess Promoter Bill Wright(right) and Grandmaster Maurice Ashley

He has organized the Saint Louis Open Tournament each Spring. He coordinated four simultaneous exhibitions and lectures by Grandmaster Maurice Ashley. He is on the board of governors of the Chess Club and Scholastic Center of Saint Louis, set to begin operation in Spring, 2008 in the spring in the Central West End. He is treasurer of the Missouri Chess Association, and sells chess equipment at many local tournaments.

# KNIGHT'S TOUR

By Ed Baur

On two occasions, once in Albuquerque, New Mexico and once at Union Station in Saint Louis, I had the opportunity to watch George Koltanowski perform the Knight's Tour. He had different items, many supplied by the audience, including names like Luke Warm, places like Switzerland, things like baseball bats and numbers like 8002822882 written on the squares of a large chessboard. He studied the board for less than three minutes, turned to audience, and asked for one of the audience to place a knight on the chessboard. A young girl placed the knight on square-e5.



He recited what was written on square-e5,

instructed the girl to move the knight to square-g4, recited what was written on that square, instructed the girl to move the knight to square-h2, recited what was written on that square, and continued until the knight again moved to square-e5, the starting square.

## KNIGHT'S TOUR MOVES BEGINNING ON SQUARE-e5

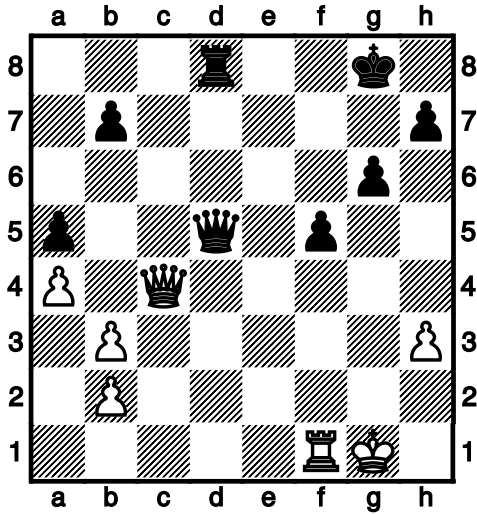
1-Ng4, 2-Nh2, 3-Nf1, 4-Ng3, 5-Nh1, 6-Nf2, 7-Nh3, 8-Ng1, 9-Ne2, 10-Nd4, 11-Nc2, 12-Na1, 13-Nb3, 14-Nc1, 15-Na2, 16-Nc3, 17-Na4, 18-Nb6, 19-Nh8, 20-Nc7, 21-Na6, 22-Nb8, 23-Nc6, 24-Na7, 25-Nb5, 26-Na3, 27-Nb1, 28-Nd2, 29-Ne4, 30-Ng5, 31-Nh7, 32-Nf8, 33-Nd7, 34-Nc5, 35-Ne6, 36-Nd8, 37-Nb7, 38-Na5, 39-Nc4, 40-Ne3, 41-Nd1, 42-Nb2, 43-Nd3, 44-Nb4, 45-Nd5, 46-Ne7, 47-Nc8, 48-Nd6, 49-Ne8, 50-Ng7, 51-Nf5, 52-Nh4, 53-Ng6, 54-Nh8, 55-Nf7, 56-Nh6, 57-Ng8, 58-Nf6, 59-Nh5, 60-Nf4, 61-Ng2, 62-Ne1, 63-Nf3, 64-Ne5

Koltanowski later confided that he had a phonographic short term memory, that is he could remember anything that he heard himself say. He also said that he could recite what was written on any rank, file or diagonal for a few hours.

# TOURNAMENT SCHEDULE

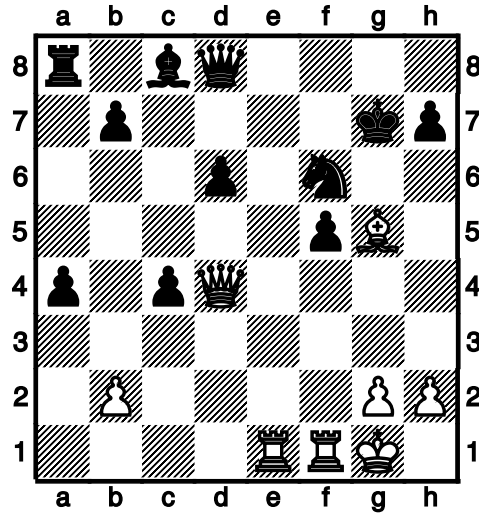
|  |   |
|--|---|
| <p>JANUARY 12<br/>GATEWAY CHESS LEAGUE TEAM<br/>TOURNAMENT(SCHOLASTIC)<br/>SAINT LOUIS, MISSOURI<br/>DETAILS – gatewaychess.org</p> <p>JANUARY 12<br/>OAKHILL TOURNAMENT(SCHOLASTIC)<br/>KANSAS CITY, MISSOURI<br/>DETAILS – kcchess.org</p> <p>JANUARY 26<br/>GATEWAY CHESS LEAGUE CLASS<br/>TOURNAMENT(SCHOLASTIC)<br/>SAINT LOUIS, MISSOURI<br/>DETAILS – gatewaychess.org</p> <p>JANUARY 19, JANUARY 20 AND JANUARY 21<br/>2008 NEW YEAR OPEN<br/>KANSAS CITY, MISSOURI<br/>DETAILS – power pawn.net</p> <p>FEBRUARY 2<br/>MISSOURI SCHOLASTIC CHAMPIONSHIP<br/>TOURNAMENT(SCHOLASTIC)<br/>COLUMBIA, MISSOURI<br/>gatewaychess.org</p> <p>FEBRUARY 9<br/>PEMBROKE TOURNAMENT(SCHOLASTIC)<br/>KANSAS CITY, MISSOURI<br/>DETAILS – kcchess.org</p> <p>FEBRUARY 23<br/>LIBERTY TOURNAMENT(SCHOLASTIC)<br/>KANSAS CITY, MISSOURI<br/>DETAILS – kcchess.org</p> <p>MARCH 8<br/>HOLY SPIRIT TOURNAMENT(SCHOLASTIC)<br/>KANSAS CITY, MISSOURI<br/>DETAILS – kcchess.org</p> <p>JANUARY 21<br/>NEW YEAR OPEN<br/>KANSAS CIY, MISSOURI<br/>DETAILS – kcchess.org</p> <p>FEBRUARY 2<br/>MISSOURI SCHOLASTIC CHAMPIONSHIPS<br/>TOURNAMENT(SCHOLASTIC)<br/>COLUMBIA, MISSOURI<br/>DETAILS – gatewaychess.org</p> | <p>FEBRUARY 16 TO FEBUARY 18<br/>KANSAS CITY OPEN<br/>(MISSOURI INVITATIONAL QUALIFIER)<br/>KANSAS CITY, MISSOURI<br/>DETAILS – kcchess.org</p> <p>FEBRUARY 23<br/>GATEWAY CHESS LEAGUE ACTION TOURNAMENT<br/>(SCHOLASTIC)<br/>SAINT LOUIS, MISSOURI<br/>gatewaychess.org</p> <p>FEBRUARY 29, MARCH 1, MARCH 2<br/>MID AMERICA OPEN<br/>SAINT LOUIS, MISSOURI<br/>BILL GOICHBURG – 845-496-9658</p> <p>MARCH 15<br/>CHRIS BOLLINGER MEMORIAL SCHOLASTIC<br/>TOURNAMENT(SCHOLASTIC)<br/>SAINT LOUIS, MISSOURI<br/>gatewaychess.org</p> <p>MARCH 29<br/>MIZZOU QUADS<br/>COLUMBIA, MISSOURI<br/>CHARLES WARD – 573-554-6685</p> <p>APRIL 12<br/>DENKER TOURNAMENT QUALIFIER(SCHOLASTIC)<br/>POLGAR TOURNAMENT QUALIFIER(SCHOLASTIC)<br/>COLUMBIA, MISSOURI<br/>gatewaychess.org</p> <p>APRIL 19<br/>KANSAS CITY SCHOLSTIC CHESS ASSOCIATION<br/>CHAMPIONHSIP TOURNAMENT<br/>KANSAS CITY, MISSOURI<br/>DETAILS – kcchess.org</p> <p>APRIL 26<br/>CHESS CLUB CHAMPIONSHIP<br/>KANSAS CITY, MISSOURI<br/>DETAILS – kcchess.org</p> <p>JUNE 14<br/>ROBERT BYRNE OPEN<br/>COLUMBIA, MISSOURI<br/>CHARLES WARD – 573-554-6685</p> |
|--|---|

WHITE TO MOVE



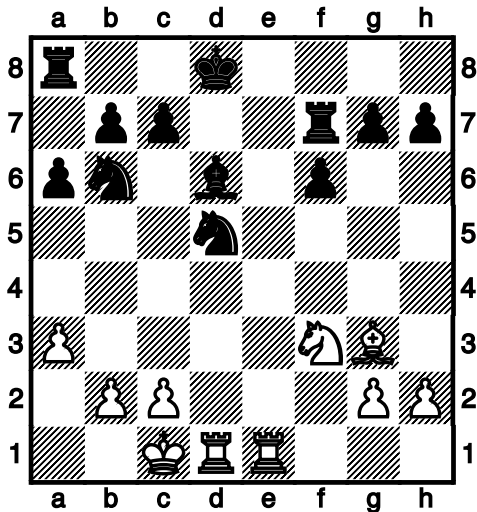
1W-Rd1!(1B-Qxc4, 2W-Rxd8+, 2B-Kg7,  
3W-bxc4!)

WHITE TO MOVE



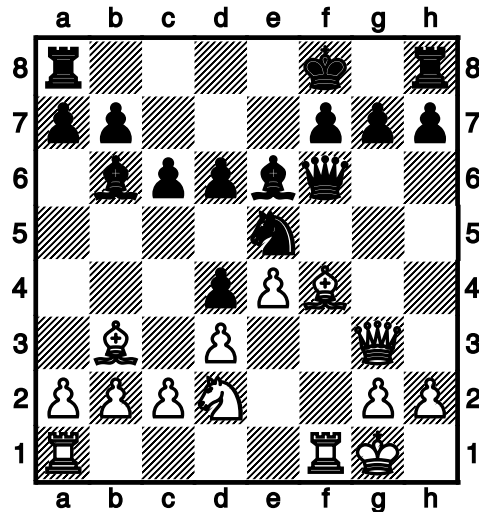
1W-Re8, 1B-Qxe8, 2W-Qxf6+, 2B-Kg8, 3W-Bh6,  
3B-Qf7, 4W-Qd8+, 4B-Qf8, 5W-Qxf8++

WHITE TO MOVE



1W-c4, 1B-Ne7(1B-Nxc4, 2W-Rxd5!), 2W-b5!

WHITE TO MOVE



1W-Bxe5, 1B-Qxe5, 2W-Qxe5, 2B-dxe5,  
3W-Bxe6!