



MISSOURI CHESS BULLETIN

www.mochess.org



Volume 33 Number Four—Fall 2006 Issue

Serving Missouri Chess Since 1973

2005-2006 MCA Officers and Board of Directors

Region 1 (St. Louis)

Treasurer William H. Wright, 449 W. Jefferson Ave., Apt. B, St. Louis, MO 63122
Ed Baur, 7138 Lindenwood, St. Louis, MO 63109

Vice President Tony Rich, 6423 Towne Wood Drive, St. Louis, MO 63017

Region 2 (Kansas City)

President Ken Fee, Jr., 1537 Baker, Liberty, MO 64068

Wayne Bartlett, P.O. Box 417, Oak Grove, MO 64075

Bryon McLaughlin, 836 NE Colleen Drive, Lee's Summit, MO 64086

Region 3 (Rest of State)

Secretary Charles Ward, 2400 Cimarron Drive, Columbia, MO 65203

Thomas Rehmeier, 5217 Denice Street, Jefferson City, MO 65109

Mike Clark, 1499 Summit View Drive, Holts Summit, MO 65043

Membership and Subscriptions

The Missouri Chess Bulletin is the official quarterly publication of the Missouri Chess Association. MCA membership includes a subscription to the MCB. E-members receive their MCB via the internet (no printed copy). Include e-mail address with dues.

	Annual Membership Rates
Regular	\$12
E-Member	\$5
Scholastic	\$8
Affiliate	\$10
Patron	\$25

**Please send address changes and memberships to
Charles Ward, 2400 Cimarron Dr., Columbia, MO 65203**

Layout and design by Ken Fee and Bryon McLaughlin

MISSOURI CHESS - Fall 2006

- 3 Missouri Champions and Ratings
- 4 **From the Editor**
Ken Fee
- 6 Board of Directors Minutes
- 7 **Missouri Chess Festival Report**
Ken Fee
- 8 **Ron Luther Wins 2006 MO Championship**
- 9 **Games from MO Invitational**
- 10 **2006 Missouri Open**
- 11 Crosstables for Missouri Reserve, Quick, Blitz, Bughouse Championships
- 14 **2006 MCA Scholastic and Crosstables**
- 17 **Steinitz in St. Louis**
Tony Rich
- 21 **Spotlight on Missouri Chess: Kevin Guo**
Steve Goldberg
- 22 **Book Review: Starting Out: 1 e4!**
Loal Davis
- 23 **From the Pawn Shop**
Loal Davis
- 27 Missouri Open Champions
- 28 **Games from Missouri Players**
- 32 Regional Chess Clubs
- 33 Missouri Tournament Life



CALENDAR FOR MCB ARTICLE AND GAME SUBMISSIONS.

MCB Issue	Winter	Spring	Summer	Fall
Deadline for Articles	December 1	March 1	June 1	September 1
Publication Date	January 1	April 1	July 1	October 15

Note: Please send articles in Microsoft Word and Games in Chessbase or PGN format. Submissions go to Ken Fee, editor, at <chessclub@powerpawn.net>.

“Methodical thinking is of more use in Chess than inspiration.”

—C.J.S. Purdy



MISSOURI TOP 50

Rank	Name	Current/Upcoming Published Rating
1.	MICHAEL A. BROOKS	2448
2.	CHARLES LAWTON	2363
3.	KENNETH E. JONES	2320
4.	THOMAS G. GOSSELL	2228
5.	RONALD LUTHER	2226
6.	LOAL W. DAVIS	2203
7.	JAMES S. ELLIS	2200
8.	KENNETH P. THOMAS	2170
9.	ANDREW J. WITTE	2159
10.	BOB HOLLIMAN	2144
11.	JAMES F. MCLAUGHLIN	2128
12.	JAMES R. VOELKER	2115
13.	ROBERT MERTON JACOBS	2100
14.	GARY M. WHITE	2085
15.	ZEBEDEE FORTMAN	2080
16.	WALDO ODAK	2050
17.	PAUL W. CORNELISON	2017
18.	JAMES A. DAVIES	2014
19.	KEVIN DALE JOHNSON	2000
20.	DANIEL R. HUFF	1970
21.	DWIGHT BEASLEY	1938
22.	GARY FREEMAN	1920
23.	STEVEN D. BANGE	1919
24.	DANIEL A. JUENGEL	1917
25.	KEVIN GUO	1914
26.	ZEBEDEE FORTMAN, JR	1900
27.	NATHANIEL S. FAST	1896
28.	MARK A. COGLEY	1892
29.	SELDEN TRIMBLE	1890
30.	MARK T. SMITH	1881
31.	VICTOR J. MARSHALL	1850
32.	KENNETH E. FEE, JR	1845
33.	DANIEL J. CORYEA	1827
34.	TONY DUTIEL	1827
35.	RAYMOND J. BIRT	1818
36.	JAKE A. FERGUSON	1798
37.	ALBERT D. HOWLETT	1794
38.	BEHROOZ M. VAKIL	1791
39.	WAYDE STALLMANN	1790
40.	EDWARD A. IRISH	1785
41.	ALEX J. MARLER	1782
42.	CHRIS A. HUNT	1774
43.	JIM POAGE	1771
44.	JOSEPH A. GARNIER	1758
45.	DARIUS MASUHUD	1757
46.	JAMES V. STAUDT	1753
47.	MIKE CLARK	1753
48.	JARED ANTHONY BRAY	1753
49.	MATTHEW LUCAS BARRETT	1750
50.	FRANCIS CROW	1749

To be eligible for the Missouri Top 50 List, a player must be a current tournament player. Current as of this printing is the 2004 through 2006 USCF Rating List.

Missouri Champions

2006 MO State & Quick Champion Ron Luther



2006 MO Champions Open Champion

Francis Crow

Reserve Champion

Nick Manley

Blitz Champion

Kevin Cao

Bughouse Champions

Tony Dutiel & Frank Chressanthis

2006 MO Class Champions

Master/Expert -- Michael Brooks

Class A -- Tony Song

Class B -- Tony Rich

Class C -- Shan Siddiqi

Class D -- Vikram Arun

Class E -- Dan Laurila

Class F -- Tyler Harris



**2006 MO HS State
Champion**
Kevin Guo
Denker Champion



**2006 MO HS State
Champion**
Katy Mueller
Polgar Champion

2006 MO HS Team Champion Vianney HS - St. Louis, MO

FROM THE EDITOR by Ken Fee, Jr.

E-mail Ken at chessclub@powerpawn.net, or visit www.powerpawn.net

Help with Missouri Chess History



The following are three topics that I have been working on during the last three months. Any help from the readership will be much appreciated. Please e-mail me at KFEE@kc.rr.com or snail mail me at 1537 Baker St. Liberty, Missouri, 64068.

First World Chess Championship St. Louis, 1886



In July while visiting the Benjamin Franklin exhibit in St. Louis, I decided to seek out the location of the first world chess championship held in 1886 between Steinitz and Zukertort. I had one piece of evidence: the original St. Louis Dispatch articles covering the match. Robert Sutter researched the match for the MCB in the 80s and the newspaper articles he found in the archives are now at www.chess-cafe.com.

The location was stated as the Harmony Building at 18th and Olive. The problem was which corner and what address? For some reason, the newspaper did not give an

address. The original building had been torn down years ago, so guessing the correct corner was a problem. My choices were a bank building, a Mom and Pop restaurant, a general unmarked building, or a huge building covering the entire block. Not knowing which corner was correct, I photographed each corner. When I arrived home, I e-mailed the Missouri Historical Society, and after some research, they told me the northeast corner was correct.

I e-mailed my conclusions to Tony Rich, and after further research by Tony, we now have his wonderful article with a picture of the location.

Now we are looking for original pictures of the match in St. Louis and the building. Can anyone help?

Capablanca in Missouri



Capablanca visited Missouri in 1909-1910 on a SIMUL tour after winning the US Championship from Frank Marshall. Here are his tour dates:

Kansas City, 4 February 1909; Humboldt, 5 February 1909; St Louis, 8 February 1909; St Louis, 9 February 1909; Kansas City, 4 December 1909; Topeka, 6 December 1909; St Louis, 8 December 1909; St Louis, 9 December 1909; Kansas City, 8 December 1910; Joplin, 9 December 1910; St Louis, 10 December 1910.

I am looking for games (I already have a few

from ChessBase) and newspaper articles from the SIMUL. If any of you have the time and access to the local newspaper archives, please help.



Robert H. Steinmeyer Nominated to Missouri Hall of Fame

We are also looking for games and pictures of Robert Steinmeyer who was a prominent player from St. Louis in the 50s and 60s. Steinmeyer won the Missouri State Championship five times and played some of the top players in the US including Bobby Fischer. Here are two of Robert's games. One is a win over Larry Evans and a second with Bobby Fischer.

United States Championship - New York December 16th, 1962 Round 1

(White) Steinmeyer, (Black) Evans, Larry
Result 1-0 ECO E54

1.d4 Nf6 2.c4 e6 3.Nc3 Bb4 4.e3 0-0 5.Nf3 c5
6.Bd3 d5 7.0-0 dxc4 8.Bxc4 Qe7 9.a3 Bxc3
10.bxc3 Nbd7 11.Re1 e5 12.e4 b6 13.Bg5 h6
14.Bd5 Rb8 15.Bh4 Bb7 16.dxe5 Nxe5
17.Nxe5 Qxe5 18.Bg3 Qxc3 19.Bxb8 Bxd5
20.Bd6 Bb3 21.Rc1 Bxd1 22.Rxc3 Rd8
23.Rxd1 Nxe4 24.Rcd3 c4 25.Rd4 Nc3
26.R1d2 Nb5 27.Rxc4 Rxd6 28.Rxd6 Nxd6
29.Rc6 Nb5 30.a4 Nd4 31.Rc8+ Kh7 32.Rc7
a6 33.Rxf7 b5 34.axb5 axb5 35.Rb7 Kg6 36.f3
Kf6 37.Kf2 g6 38.Rb6+ Kg5 39.Rd6 Nf5
40.Rd5 h5 41.Rxb5 h4 42.Rb4 Kh5 43.Ke2
Kh6 44.Kd3 Kg5 45.Ke4 Nd6+ 46.Ke5 Nf7+
47.Ke6 Nd8+ 48.Kd7 Nf7 49.Ke7 Nh6 50.Ke6
Nf5 51.Rg4+ Kh5 52.Kf6 1-0

United States Championship - New York December 16th, 1962.Round 8

(White) Steinmeyer, (Black) Fischer, Robert
Result 0-1 ECOD73

1.Nf3 Nf6 2.g3 g6 3.Bg2 d5 4.d4 Bg7 5.c4
dxc4 6.Qa4+ Nfd7 7.0-0 Nc6 8.Qxc4 0-0 9.Rd1
Nb6 10.Qb3 Be6 11.Qc2 Bf5 12.Qb3 a5
13.Nc3 a4 14.Qa3 Ra5 15.Nb1 Bc2 16.Re1
Nxd4 17.Nxd4 Bxd4 18.Qb4 Ra8 19.e3 Bg7
20.Na3 Bf5 21.Bxb7 Rb8 22.Bg2 Qd6 23.Qa5
Be6 24.e4 Qe5 25.Qa6 Rfd8 26.Rb1 Ra8
27.Qe2 Bxa2 28.Bf4 Qd4 29.Bxc7 Bxb1
30.Bxd8 Rxd8 31.Rxb1 Qd2 32.Qxd2 Rxd2
33.b3 Bd4 34.bxa4 Rxf2 35.Kh1 Nxa4 36.Nb5
Be5 37.Kg1 Rd2 38.Kh1 Rb2 39.Na3 h5
40.Bf1 h4 41.Nc4 0-1

Final Game Position



Putting Past Missouri Chess Bulletins on the Web

We are now in the process of scanning old Missouri Chess Bulletins, turning them into PDF files, and displaying them on the web. The Bulletin is an important part of Missouri chess history. While I have most of the MCBs dating from the 70s, the original copies are not in the best shape. We are looking for original MCBs from the past. If you can help, please contact me.

Have a great Fall 2006!

Ken Fee
Editor, *Missouri Chess Bulletin*

MISSOURI CHESS ASSOCIATION BOARD OF DIRECTORS MEETING

Minutes of October 1, 2006 Meeting

The meeting was convened at 12:39 pm at the UMC Memorial Union in Columbia, MO.

Members present: Ed Baur, Bill Wright, Tony Rich, Charlie Ward, Thomas Rehmeier, Mike Clark, Wayne Bartlett, Bryon McLaughlin and Ken Fee. This is the complete Board for 2006-2007.

The first order of business was the election of new officers for 2006-2007. Elected were:

President: Ken Fee, Vice-President: Tony Rich, Secretary: Charlie Ward, Treasurer: Bill Wright

All of the new officers agreed to serve and were elected by a unanimous vote.

The minutes of the January, 2006 meeting were approved. This was necessary because the May 21, 2006 meeting had no quorum and so these minutes could not be formally approved at that time.

The next meeting of the Board will be on Sunday, February 4, 2007 at 12:30pm in the UMC Memorial Union first-floor cafeteria. In case of inclement weather the backup date will be Sunday, February 18, 2007 at 12:30pm.

Bill Wright presented the treasurer's report. The MCA checking account balance on August 31, 2006 was \$3440.11. This compares to a balance of \$3011.79 on August 31, 2005. Bill reported that there had been a number of fraudulent debits from the MCA account around the beginning of September, but the bank had been very cooperative and the losses had been reimbursed. The old checking account had been closed and a new one opened. Reports to the police had eventually resulted in identifying the perpetrator but it appeared likely that no action would be taken. In discussion of this report, Bill was requested to provide a detailed budget vs. expense report for 2007 at the February meeting to cover 2007. It was pointed out that if any decisions were made that required new type of expenditures Bill would need to be informed in order to take them into account in his budgeting. In further discussion it was moved and approved that Ken Fee be added as a signer to the club account.

Charlie Ward, membership chair, reported that there are currently 202 paid members, counting two new ones received too late to be included in the printed report distributed at the meeting. This compares with 218 reported at the May 21 meeting and 225 at the January 22 meeting. This continuing decline is the result of a lack of MCA-sponsored tournaments in St. Louis; the only MCA tournament in St. Louis during the past year was the St. Louis Open last April. There are monthly non-MCA tournaments in St. Louis; if these had required MCA membership, the membership total would be close to 250, our long-term average. During discussion, Tony Rich volunteered to organize more MCA-sponsored St. Louis area tournaments during the coming year that would help reverse the membership decline.

Old Business:

- Future tournament schedule: the St. Louis Open will be

held on April 28-29, 2007, the Missouri Class Championship is being planned for July 14-15, 2007 in Columbia, and the Missouri Open and Invitational championship will be held in Columbia on September 29-30, 2007. It was proposed that the same prize structure used in 2006 be used in 2007; this was agreed to unanimously.

- 2007 Invitational state championship format: The proposed guidelines for the Invitational presented by Charlie Ward at the May 21 meeting (which could not be acted on at that meeting due to the lack of a quorum) were discussed. The proposal was adopted with a few suggested changes. (The amended proposal is attached to these minutes as Attachment A.) In addition to the two MCA title tournaments, three other tournaments needed to be selected by the Board as qualifiers for the Invitational. The Board approved the St. Louis Open and the Kansas City Open on February 17-19 as qualifying events. It was agreed that a tournament satisfying the approved guidelines in the St. Louis area would be very desirable. A specific St. Louis event was not selected at the meeting but will be done via email communications between members prior to the February 4 Board meeting.

- 2006 MCA Tournaments: The 2006 St. Louis Open drew approximately 60 players and made a profit of \$361.95, as reported in the May 21 meeting minutes. The 2006 Missouri Class drew 46 players, less than the projected total of 50, but returned \$130 to the MCA. The event was held in early June; in 2007 it will be planned for mid-July to enhance attendance. The 2006 Missouri Chess Festival drew 53 players to the Open (both sections) and 6 to the Invitational. The event lost \$341; expenses included a \$500 donation to the Bridger JHS chess club for a building fee. It was moved that the MCA reimburse Ken for the \$341; this was approved unanimously. In discussion of the 2006 tournaments Ed Baur described the success of his half-price entry/half-prize eligibility for scholastic players in the St. Louis Open. It was moved and approved that this would be a standard arrangement for future MCA open tournaments. The Class championship was specifically exempted from this requirement.

- Scholastic tournaments. The MCA will be collecting \$1 this-event-only memberships from participants in the Grade-Level championships in November and the K-12 and K-9 state championships at the end of February. In return, the players will be given access to one issue of the MCA Bulletin on the Web. It was agreed that e-mail addresses would not be collected from players; instead the viewing code for the next issue would be given to them at registration.

- Discussion of proposed MCA goals presented by Wayne Bartlett at past meetings was deferred until New Business items had been discussed.

New Business:

- Tony Rich described the interactive forum he had set up on his StLchess.com Web site. He had received a number of suggestions for improving the MCA Bulletin. In particular, Loal Davis had suggested that articles on chess events outside of Missouri be included if written by Missouri chess players. Tony suggested that a similar MCA member forum be added to the MCA Web site to provide for member feedback and discussion. He agreed to work with Charlie Ward (the current MCA web master) to see how this could be

—MCA Minutes are continued on page 30.

MISSOURI CHESS FESTIVAL REPORT

162 Players in Kansas City

Reported by Ken Fee, Tournament Director

After spending 34 hours as a TD for the Missouri Chess Festival and running six different tournaments, I am finally recovering. We had a record 162 players attend the festival in Independence, Missouri.

I would like to thank Wayne Bartlett, my TD partner in crime, for working long hours also along with John Sutton, the Bridger chess coach, and Bridger Middle School for hosting the event. The MCA donated \$500 to the Bridger Middle School chess team.

The following players won state titles and the results are below:

- Ron Luther – 2006 Missouri State Champion
- Ron Luther – 2006 Missouri Quick State Champion
- Kevin Cao - 2006 Missouri Blitz State Champion
- Tony Dutiel & Frank Chressanthis 2006 Missouri Bughouse State Champions
- Francis Crow - 2006 Missouri Open State Champion
- Nicholas Manley - 2006 Missouri Reserve State Champion

2006 INVITATIONAL - Five Rounds - Round Robin G120 September 16-17, 2006



From left to right. IM Michael Brooks, Nick Karlow, Tony Dutiel, Ron Luther, Bob Holliman and Ken Jones.

NAME	Rating	State	1	2	3	4	5	6	Score
Michael Brooks (MO Class)	2447	MO	█	1/2	1/2	1	1	1	4.0
Kenneth Jones (KC Masters)	2320	MO	1/2	█	0	1/2	1/2	1	2.5
Ron Luther (Kansas City Open)	2215	MO	1/2	1	█	1	1	1/2	4.0
Bob Holliman (State Champ)	2151	MO	0	1/2	0	█	1	1	2.5
Tony Dutiel (New Year Open)	1807	MO	0	1/2	0	0	█	0	0.5
Nick Karlow (St. Louis Open)	1756	MO	0	0	1/2	0	1	█	1.5



RON LUTHER WINS 2006 MISSOURI STATE CHAMPIONSHIP!

(Left) Ron Luther receiving plaque and check from Tournament Director Ken Fee (right).

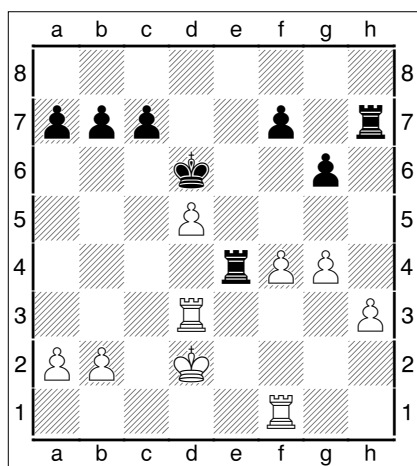
Ron Luther won the 2006 Missouri State Championship on the second tie-break, wins with Black. By winning the Invitational. Ron won \$500 and a state champion plaque. The victory also earns Ron a spot in the 2007 State Championship Invitational to be held in Columbia, September 29th and 30th.

Luther won the title because he exhibited a **spirit of fighting chess!** First, when being a pawn down against Ken Jones, Ron continued to push the position and eventually won with Black. Second, Luther drew with IM Brooks in a game that seemed to be losing in the mid-*de*game. The game below not only gave Luther a win but a win with Black which was key to his success.

Jones, Kenneth (2320) - Luther, Ron (2230) [B01] 2006 Missouri Invitational (4th Round), September 17th ,2006

1.e4 d5 2.exd5 Nf6 3.c4 e6 4.dxe6 Bxe6 5.Nf3 Qe7 6.Qe2 Nc6 7.d4 Bg4 8.Be3 0-0-0 9.d5 Qb4+ 10.Nc3 Na5 11.0-0-0 Bh5 12.h3 Re8 13.g4 Bg6 14.Nh4 Ne4 15.Nxe4 Bxe4 16.f3 Bg6 17.Nxg6 hxg6 18.Qd3 Nxc4 19.Bd4 Ne5 20.Qb5 Jones offered Luther a draw. 20...Bd6 21.Qxb4 Bxb4 22.Bb5 Re7 23.f4 Nd7 24.Bxg7 Rh7

25.Bxd7+ Kxd7 26.Be5 Re8 27.Rd3 Bd6 28.Bxd6 Kxd6 29.Kd2 Re4 30.Rf1
Diagram



Luther fights for a win being a pawn down!
30...Ra4 31.a3 Ra5 32.f5 g5 33.f6 Rxd5 34.Rxd5+ Kxd5 35.Rf5+ Ke6 36.Rxg5 Rxh3 37.Rc5 c6 38.Ra5 a6 39.Ra4 Kxf6 40.Rb4 b5 41.a4 Ke5 42.axb5 axb5 43.Ke2 f6 44.Kf2 Rd3 0-1

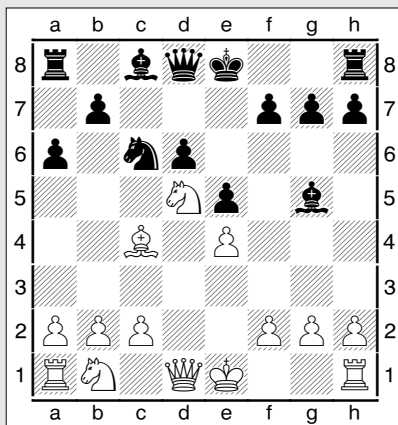
The **lack of fighting chess** was portrayed in other games. For instance, the Brooks-Jones draw agreed upon on move 10, still early in the opening phase, resulted in the MCA Board initiating a 30-move draw rule for the 2007 Invitational, Open, and Reserve sections.

GAMES FROM THE 2006 MISSOURI INVITATIONAL



Brooks, IM Michael (2439) versus Jones, Kenneth, (2320) 2006 Missouri Invitational (2nd Round), September 16th, 2006

1.e4 c5 2.Nf3 Nc6 3.d4 cxd4 4.Nxd4 e5 5.Nb5 d6 6.Bc4 a6 7.N5c3 Nf6 8.Bg5 Be7 9.Bxf6 Bxf6 10.Nd5 Bg5 Diagram



1/2-1/2

Dutiel, Tony (1815) - Luther, Ron (2230) [B28], 2006 Missouri Invitational (2), 16.09.2006

1.e4 c5 2.Nf3 a6 3.c3 d5 4.exd5 Qxd5 5.d4 Nc6 6.Be2 Nf6 7.0-0 cxd4 8.cxd4 g6 9.Nc3 Qd6 10.a3 Bg7 11.Be3 0-0 12.Rc1 Ng4 13.Ne4 Qd5 14.Nfd2 Nxe3 15.fxex3 Bh6 16.Rc3 Bf5 17.Bf3 Qd8 18.Nb3 Na7 19.a4 Rc8 20.Nec5 b6 21.e4 bxc5 22.exf5 Bg7 23.fgxg6 hxg6 24.Bb7 Rb8 25.Bxa6 cxd4 26.Rd3 Qb6 27.Bc4 Qb4 28.Qc2 Nc6 29.Rxf7 Rxf7 30.Bxf7+ Kxf7 31.Rf3+ Bf6 32.Qxc6 Qe1+ 33.Rf1 Qe3+ 34.Kh1 Rxb3 35.Rxf6+ exf6 36.Qc4+ Kg7 37.Qc7+ Kh6 38.h3 Rxb2 39.Qd8 Rb1+ 40.Kh2 Qf4+ 41.g3 Qf2# 0-1

Luther, Ron (2230) - Holliman, Bob (2145) [C11], 2006 Missouri Invitational (1), 16.09.2006

1.e4 e6 2.d4 d5 3.Nc3 Nf6 4.e5 Nfd7 5.f4 c5 6.Nf3 Nc6 7.Be3 cxd4 8.Nxd4 Nxd4 9.Bxd4 f5 10.Qh5+ g6 11.Qf3 a6 12.0-0-0 b5 13.Nxd5 Bb7 14.Nf6+ Nxf6 15.Qxb7 Nd5 16.g3 Rc8 17.Qxa6 Rxc2+ 18.Kb1 Qc7 19.Qxe6+ 1-0

Karlow, Nick (2320) - Jones, Ken (1725) [E81], 2006 Missouri Invitational

1.d4 Nf6 2.c4 g6 3.Nc3 Bg7 4.e4 d6 5.f3 0-0 6.g4 e5 7.d5 c6 8.Nge2 cxd5 9.cxd5 Ne8 10.h4

f5 11.exf5 gxf5 12.g5 f4 13.Ne4 Na6 14.N2c3 Nc5 15.b4 Nxe4 16.Nxe4 Bf5 17.Bd3 Qb6 18.Nf6+ Nxf6 19.Bxf5 Nh5 20.Qd3 e4 21.Be6+ Kh8 22.fxe4 Bxa1 23.Bd2 Qd4 24.Qxd4+ Bxd4 0-1

Luther, Ron (2230) - Brooks, Mike (2439) [B91], 2006 Missouri Invitational

1.e4 c5 2.Nf3 d6 3.d4 cxd4 4.Nxd4 Nf6 5.Nc3 a6 6.g3 e5 7.Nde2 Nbd7 8.Bg2 b5 9.a3?! [9.h3] 9...Bb7 10.0-0 Be7 11.h3 Nc5 12.f3 Rc8 13.Be3 0-0 14.Qd2 d5 15.exd5 Nxd5 16.Nxd5 Bxd5 17.Nc3 Ba8 18.Qxd8 Rfxd8 19.Rad1 Ne6 20.Rxd8+ Rxd8 21.f4 Bxg2 22.Kxg2 exf4 23.gxf4 f5 24.Rd1 Rxd1 25.Nxd1 Kf7 26.Kf3 h6 27.Nf2 g5 28.Nd3 Bd6 29.fgx5 hxg5 30.b4 Ke7 31.c3 Kd7 32.Nb2 Be5 33.Bd2 Kd6 34.a4 Kd5 35.axb5 axb5 36.Nd3 Bf6 37.Nb2 Nd8 38.Nd1 Nf7 39.Ne3+ Ke6 40.Ke2 Ne5 41.Be1 Bd8 42.Nc2 Bb6 43.Bf2 Bxf2 44.Kxf2 Kd6 45.Ne3 g4 46.hxg4 1/2-1/2

Brooks, Mike (2439) - Holliman, Bob (2145) [C68], 2006 Missouri Invitational

1.e4 e5 2.Nf3 Nc6 3.Bb5 a6 4.Bxc6 dxc6 5.0-0 Bd6 6.d4 exd4 7.Qxd4 f6 8.Re1 Ne7 9.e5 fxe5 10.Nxe5 Be6 11.Bg5 Nf5 12.Qg4 Qc8 13.Qh5+ g6 14.Nxg6 Ng7 15.Qh6 Nf5 16.Qh3 Ng7 17.Nxh8 1-0

2006 MISSOURI OPEN

In the Open, Francis Crow beat Master, Thomas Gossell and Experts Tim Steiner and James Davies to earn a spot in the 2007 Missouri Invitational.



Francis Crow - 2006 Missouri Open Winner

Crow's rating is now over 1900! Francis also won the upset prize by beating Gossell. Here is one of Crow's upsets.

Davies, Jim (2014) - Crow, Francis (1749) [B08], 2006 Missouri Open

1.e4 d6 2.d4 Nf6 3.Nc3 g6 4.Bg5 Bg7 5.Qd2

c6 6.Nf3 Qa5
 7.Bd3 h6 8.Bxf6
 Bxf6 9.Ne2 Qc7
 10.c3 Nd7 11.0-0
 e5 12.a4 a5
 13.Rfd1 Kf8
 14.Bc2 Kg7
 15.h3 Rd8
 16.Nh2 Nb6
 17.b3 d5 18.f4
 dxe4 19.Bxe4
 exd4 20.cxd4
 Be6 21.Qc2 Nd5
 22.Bxd5 Rxd5
 23.Nf3 Rad8 24.Ne5 Qb6 25.Kh2 c5 26.g4
 cxd4 27.Qd3 Bxe5 28.fxe5 Qc7 29.Og3 d3
 30.Nf4 Rxe5 31.Rac1 Qd6 32.Rxd3 Re2+
 33.Kh1 Qxf4 34.Qxf4 Rxd3 35.Kg1 Bd5
 36.Qc7 Rxb3 37.Kf1 Bf3 38.Qc3+ Kh7
 39.Qxf3 Rxf3+ 40.Kxe2 Rxb3 0-1

No.	Name	Rate	Pts	Rnd1	Rnd2	Rnd3	Rnd4	Rnd5
1	Crow, Francis	1749	4.5	W19	W3	W9	W2	D4
2	Davies, James A	2014	3.5	W14	W11	W4	L1	D5
3	Huff, Daniel R	1970	3.5	W20	L1	W11	D5	W10
4	Camarda, Kyle	1906	3.5	W15	W12	L2	W13	D1
5	White, Gary M	2085	3.5	W18	W7	-H-	D3	D2
6	Gaul, Thomas J	1808	3.5	L12	W18	W15	W9	D7
7	Birt, Raymond J	1818	3.0	W8	L5	-H-	W16	D6
8	Cao, Kevin Y	1616	3.0	L7	D14	D18	W15	W11
9	Steiner, Tim C	2063	2.5	D13	W17	L1	L6	W16
10	Rehmeier, Thomas R	1445	2.5	D17	D13	D19	W14	L3
11	Yates, Jimmy R	1726	2.0	W16	L2	L3	W12	L8
12	Smith, Frank H	1557	2.0	W6	L4	L13	L11	-B-
13	Rich, Tony D	1731	2.0	D9	D10	W12	L4	-U-
14	Spies, Bob	1750	2.0	L2	D8	-H-	L10	W18
15	Walker, Timothy M	1617	1.5	L4	-B-	L6	L8	D17
16	Baker, Sean	1667	1.5	L11	D19	W17	L7	L9
17	Clark, Mike	1753	1.5	D10	L9	L16	D18	D15
18	Patrick, Earney R	1745	1.0	L5	L6	D8	D17	L14
19	Gossell, Thomas G	2228	1.0	L1	D16	D10	-U-	-U-
20	Coker, Laurence	1700	0.0	L3	-U-	-U-	-U-	-U-

2006 MISSOURI RESERVE CROSSTABLE

No.	Name	Rate	Pts	Rnd1	Rnd2	Rnd3	Rnd4	Rnd5
1	Manley, Nicholas J	1549	5.0	W30	W7	W20	W8	W3
2	Lesslie, Peter C	1137	4.0	W29	D4	W17	W9	D5
3	Holmes, Dan	1421	3.5	W18	D8	W11	W10	L1
4	Williamson, Byron	1475	3.5	W28	D2	-H-	W21	D10
5	Cao, Henry	1472	3.5	W25	L21	W30	W20	D2
6	Jesch, Isaiah D	1514	3.5	W31	L20	W29	D7	W14
7	Shannon, Nicholas	1448	3.0	W33	L1	W22	D6	D9
8	Baur, Edward C	1516	3.0	W22	D3	W14	L1	-H-
9	Conklin Jr, Joseph	1524	3.0	W16	D27	W13	L2	D7
10	Howejr, Gary R	1534	3.0	D15	W12	W21	L3	D4
11	Reams, Thomas	1554	3.0	W32	D14	L3	D15	W13
12	English, Tony	1151	3.0	D13	L10	D16	W29	W20
13	Kearns, Charles Da	1419	2.5	D12	W15	L9	W23	L11
14	Hill, Larry D	1461	2.5	W24	D11	L8	W25	L6
15	Campbell, Tim V	1345	2.5	D10	L13	W28	D11	D17
16	Manker, Alan D	1338	2.5	L9	D23	D12	D24	W21
17	Armenta, C J	1556	2.5	L20	W26	L2	W22	D15
18	Patrick, Aaron	1172	2.5	L3	L22	W32	W28	D19
19	Ramsey, Christopher	1375	2.5	L21	D28	W26	-H-	D18
20	Clark, Thomas P	1375	2.0	W17	W6	L1	L5	L12
21	Cross, Kellen A	984	2.0	W19	W5	L10	L4	L16
22	Miller, Webb	1334	2.0	L8	W18	L7	L17	W29
23	Amann, Jake S	1108	2.0	L27	D16	W31	L13	D25
24	Berry, Kyle P	1227	2.0	L14	L30	-B-	D16	D26
25	Benetz, Tony	1273	2.0	L5	W32	-H-	L14	D23
26	Asher, Leroy E	1093	2.0	-H-	L17	L19	-X-	D24
27	Ward, Charles E W	1396	2.0	W23	D9	-U-	-U-	-H-
28	Conklin, Spencer L	1296	1.5	L4	D19	L15	L18	W31
29	Tong, William M	1403	1.0	L2	W31	L6	L12	L22
30	Stenseng, Sean J	1359	1.0	L1	W24	L5	-U-	-U-
31	Ramsey, Clifford R	1317	0.5	L6	L29	L23	-H-	L28
32	Lemlek, Stephen M	1368	0.0	L11	L25	L18	-F-	-U-
33	Nelson, Logan J	803	0.0	L7	-U-	-U-	-U-	-U-

2006 MISSOURI QUICK CHAMPIONSHIP

Ron Luther beat Bob Holliman in a two-game playoff to win the title! The event was played on Friday night.

No.	Name	Rate	Pts	Rnd1	Rnd2	Rnd3	Rnd4
1	Holliman, Bob	2108	3.5	W8	W3	W6	D2
2	Luther, Ronald	2125	3.5	W4	W9	W7	D1
3	Smith, Frank H	1376	3.0	W13	L1	W9	W7
4	Conklin, Spencer L	1402	3.0	L2	W15	W12	W6
5	Baker, Sean	1438	2.5	-H-	L6	W11	W8
6	Manker, Alan D	1342	2.0	W11	W5	L1	L4
7	Spies, Bob	1606	2.0	W12	W10	L2	L3
8	Miller, Webb	1164	2.0	L1	W13	W10	L5
9	Armenta, C J	1590	2.0	W15	L2	L3	W12
10	Conklinjr, Joseph	1455	2.0	W14	L7	L8	W15
11	Dye, Brad Allen	100	1.5	L6	-B-	L5	D13
12	Benetz, Tony	1099	1.0	L7	W14	L4	L9
13	Woltz, Matthew L	788	1.0	L3	L8	D15	D11
14	McLaughlin, Bryon	639	1.0	L10	L12	-B-	-U-
15	Skelton, Barry N	889	0.5	L9	L4	D13	L10



Kevin Cao 2006 Missouri Blitz Champion

No.	Name	Rate	Pts	Rnd1	Rnd2	Rnd3	Rnd4	Rnd5	Rnd6	Rnd7
1	Cao, Kevin Y	1508	6.5	W9	W10	W3	D2	W5	W6	W8
2	Cao, Henry	1280	5.0	D8	W6	W7	D1	D3	D4	W5
3	Rehmeier, Thomas R	1492	4.5	W12	W4	L1	W7	D2	L5	W10
4	Tong, William M	1407	4.5	W6	L3	L5	W11	W9	D2	W12
5	Armenta, CJ	1590	4.0	L7	W11	W4	W9	L1	W3	L2
6	Huff, Daniel R	1879	4.0	L4	L2	W8	W10	W12	L1	W9
7	Amann, Jake S	957	4.0	W5	W8	L2	L3	L10	W12	W11
8	Clark, Mike	1660	3.0	D2	L7	L6	W12	W11	D10	L1
9	McLaughlin, Bryon	639	3.0	L1	W12	W10	L5	L4	W11	L6
10	Bodenheimer, Karl	1450	2.5	W11	L1	L9	L6	W7	D8	L3
11	Brake, Troy		1.0	L10	L5	W12	L4	L8	L9	L7
12	Bodenheimer, David		0.0	L3	L9	L11	L8	L6	L7	L4

2006 MISSOURI BUGHOUSE CHAMPIONSHIP



Frank Chressanthis (left) and Tony Dutiel (right) won the Missouri State Bughouse Championship.

No.	Name	Pts	Rnd1	Rnd2	Rnd3	Rnd4	Rnd5
1	Grande and Baker	4.5	W11	W3	D2	W4	W7
2	Dutiel and Chressanthis	4.5	W4	W9	D1	W3	W10
3	Rehmeier and Lee	2.5	W10	L1	W6	L2	D4
4	Conklin and Clark	2.5	L2	W11	W5	L1	D3
5	Parkerson and Nelson	2.5	W8	D6	L4	L7	-B-
6	McLaughlin and Conklin	2.5	D7	D5	L3	-B-	D8
7	Gevhausen and Fedynich	2.5	D6	D8	D9	W5	L1
8	Woltz and Skelton	2.5	L5	D7	W10	D9	D6
9	Sampei and Stark	2.0	-B-	L2	D7	D8	L11
10	Bechthold and Bechthold	2.0	L3	-B-	L8	W11	L2
11	Frisbee and McQuery	2.0	L1	L4	-B-	L10	W9



Get online today!

Hey Scholastic Players!

Go to two key websites for scholastic tournament news!

Gateway Chess Association (St. Louis)

Website: www.gatewaychess.org

Kansas City Scholastic Chess Association

Website: www.kcchess.org

2006 MCA SCHOLASTIC



Seventy-six players played on Saturday in the Bridger Middle School cafeteria while the Missouri Open was being held in the gym.

K-3 Individual Standings

No.	Name	Rate	Pts	Rnd1	Rnd2	Rnd3	Rnd4	Rnd5
1	Reams, Cole	992	5.0	W4	W7	W5	W2	W8
2	Dahl, Ryan	100	3.5	-B-	D8	W10	L1	W4
3	Cheng, Tony		3.5	D10	W9	W8	L4	W5
4	Swartz, Aaron		3.0	L1	W6	W11	W3	L2
5	Stark, Daniel		3.0	W6	W11	L1	W12	L3
6	McGee, Isaac		3.0	L5	L4	W13	W7	W10
7	Copeland, Ross		3.0	W9	L1	W12	L6	-B-
8	Rees, John Yuto	631	2.5	W12	D2	L3	W11	L1
9	Bradt, Colin		2.5	L7	L3	-B-	D10	W13
10	MacDonald, Allister		2.0	D3	W13	L2	D9	L6
11	Bradt, Roscoe N	549	2.0	-X-	L5	L4	L8	W12
12	Reat, Losen		1.0	L8	-B-	L7	L5	L11
13	Dahl, Andrea H.		1.0	-F-	L10	L6	-B-	L9

K-3 Team Standings

Plc	Code	Name (Players Top 4 Used)	Score	Solk	Cum	CumOp	SBx2
1	PEHS	PEMBROKE HILL SCHOOL, MO (5)	11.5	53.5	37.0	157.5	38.0
2	WGEL	WALNUT GROVE ELEM (2)	4.5	19.5	11.0	58.0	12.5
3	CORD	CORDLEY ELEMENTARY, LAWRENCE, K (2)	4.5	18.0	9.0	59.0	5.0

2006 MCA SCHOLASTIC RESULTS

K-6 Individual Standings

No.	Name	Rate	Pts	Rnd1	Rnd2	Rnd3	Rnd4	Rnd5
1	Arun, Vikram	1366	5.0	W8	W5	W4	W2	W6
2	Nandy, Arjun S	1276	4.0	W16	W9	W13	L1	W5
3	Parkerson, Andrew	629	4.0	L7	W22	W15	W19	W4
4	Lee, Hughes	1167	3.0	W10	W11	L1	W14	L3
5	Xing, Rex J	937	3.0	W17	L1	W14	W10	L2
6	Sampei, Sarah	1052	3.0	W21	L13	W8	W9	L1
7	Zhou, Daniel Y	1131	3.0	W3	L14	L10	W16	W11
8	McLaughlin, Bryon	689	3.0	L1	W17	L6	W20	W14
9	Gossell, Joanna	836	3.0	W12	L2	W18	L6	W13
10	Jagtiani, Kiran A	634	3.0	L4	W20	W7	L5	W15
11	Nelson, Matthew	812	3.0	W20	L4	W16	W13	L7
12	Mcmillen, Myles W		2.5	L9	D19	L20	W18	W21
13	Kumar, Ashwath S		2.0	W15	W6	L2	L11	L9
14	Radel, Shea A	821	2.0	W22	W7	L5	L4	L8
15	Hall, Alex	758	2.0	L13	W18	L3	W17	L10
16	Wilson, Edward L.	671	2.0	L2	W21	L11	L7	W19
17	Campbell, Jabez D	374	2.0	L5	L8	W22	L15	W20
18	Hrinya, Ryan	100	2.0	W19	L15	L9	L12	-B-
19	Liu, Samuel	868	1.5	L18	D12	W21	L3	L16
20	Talley, Brandon		1.0	L11	L10	W12	L8	L17
21	Bechthold, George	431	1.0	L6	L16	L19	W22	L12
22	Barchers, Daniel		0.0	L14	L3	L17	L21	-U-

K-6 Team Standings

Plc	Code	Name (Players Top 4 Used)	Score	Solk	Cum	CumOp	SBx2
1	PEHS	PEMBROKE HILL SCHOOL, MO (8)	14.0	51.0	41.0	158.0	60.0
2	GENT	GENT (1)	5.0	16.0	15.0	51.0	32.0
3	TJMS	THOMAS JEFFERSON MS (1)	3.0	17.0	11.0	52.0	16.0
4	PSEL	PRAIRIE STAR ELEMENTARY, OVERLA (1)	3.0	16.0	10.0	49.0	14.0
5	HEAT	Heatherstone Elementary, Olathe (1)	3.0	14.0	8.0	42.0	18.0
6	GOHS	Gossell Home School (1)	3.0	13.0	9.0	42.0	12.0
7	UNEL	Underwood Elementary (1)	3.0	13.0	7.0	41.0	10.0
8	RIDGE	RIDGE (1)	2.0	15.0	9.0	48.0	10.0
9	DWMS	Delta Woods Middle School (1)	2.0	12.5	6.0	36.0	7.0
10	CORD	CORDLEY ELEMENTARY, LAWRENCE, K (1)	2.0	12.5	5.0	38.0	5.0
11	IVEL	INDIAN VALLEY ELEMENTARY (1)	1.5	11.0	5.0	27.0	4.5
12	BECH	BECH (1)	1.0	9.5	2.0	25.0	1.0

2006 MCA SCHOLASTIC RESULTS

K-12 Individual Standings

No.	Name	Rate	Pts	Rnd1	Rnd2	Rnd3	Rnd4	Rnd5
1	Armstrong, Eric R	1459	5.0	W4	W25	W23	W10	W6
2	McQuerry, Jacob T		4.5	W12	W3	W11	D6	W8
3	Sampei, Daiki	1365	4.0	W26	L2	W22	W7	W14
4	Lyons, Colby Nicho		4.0	L1	W38	W34	W13	W11
5	Bechthold, Jonht	327	4.0	-X-	L6	W31	W15	W10
6	Littleton, Trent	1196	3.5	W16	W5	W24	D2	L1
7	Stockwell, Ryan Le	1451	3.5	-H-	W28	W9	L3	W18
8	Sansom, Mitch O	1444	3.5	-H-	W41	W21	W12	L2
9	Skelton, Barry N	972	3.5	W40	D21	L7	W34	W22
10	Khurana, Arjun	1126	3.0	W18	W34	W13	L1	L5
11	Woltz, Matthew L	806	3.0	W35	W20	L2	W29	L4
12	Shore, Elijah N	928	3.0	L2	W17	W35	L8	W29
13	Brake, Troy	766	3.0	W32	W14	L10	L4	W25
14	Williams, Brandon	610	3.0	W17	L13	W26	W25	L3
15	Rewald, Jake K	898	3.0	W19	L24	W16	L5	W23
16	Pickle, Charles		3.0	L6	W30	L15	W26	W27
17	Geveshausen, Brand		3.0	L14	L12	W37	W31	W24
18	Brantmyer, Travis		3.0	L10	W37	W39	W23	L7
19	Macomber, Preston		3.0	L15	L26	-B-	W30	W32
20	Frisbie, Alexander N.		3.0	W30	L11	W28	W24	-U-
21	Kaberline, Aaron		2.5	W39	D9	L8	L22	W35
22	Nelson, Logan J	803	2.5	-H-	W36	L3	W21	L9
23	Garton, Trent C	728	2.0	W27	W29	L1	L18	L15
24	Fedynich, Craig S	696	2.0	-X-	W15	L6	L20	L17
25	Doan, Paul		2.0	W37	L1	W27	L14	L13
26	Fedynich, Emily		2.0	L3	W19	L14	L16	W40
27	Brown, Casey L		2.0	L23	W32	L25	W33	L16
28	Dye, Brad Allen	100	2.0	W38	L7	L20	D35	D34
29	Davis, Matthew Mic		2.0	W33	L23	W41	L11	L12
30	Daniel, Tyler C		2.0	L20	L16	W40	L19	W38
31	Houston, Dylan		2.0	L34	W40	L5	L17	W37
32	Stewart, David		2.0	L13	L27	W38	W39	L19
33	Talley, Mark P		2.0	L29	L35	W36	L27	W39
34	Woltz, Daniel J	455	1.5	W31	L10	L4	L9	D28
35	Vilchez, Hector Ro		1.5	L11	W33	L12	D28	L21
36	Secrest, Felisha		1.5	-H-	L22	L33	L37	W41
37	Green, Dio		1.0	L25	L18	L17	W36	L31
38	Fedynich, Danny		1.0	L28	L4	L32	W41	L30
39	Bragg, Ian	243	1.0	L21	-B-	L18	L32	L33
40	Brooks, Jacqueline		1.0	L9	L31	L30	-B-	L26
41	Owen, Randy		0.5	-H-	L8	L29	L38	L36

K-12 Team Standings

Plc	Code	Name (Players Top 4 Used)	Score	Solk	Cum	CumOp	SBx2
1	WMCA	WILLIAM CHRISMAN HS, Independence (7)	14.5	57.0	41.0	179.5	73.5
2	FOSL	Fort Osage Scholastic League (5)	12.5	50.0	40.0	155.5	46.5
3	TRHS	Truman High School (9)	11.0	51.5	34.0	157.0	49.0
4	RAYP	Ray-Pec High School (3)	8.5	39.0	27.0	119.0	38.5
5	BRDG	Bridger Middle School (8)	8.0	43.0	20.0	126.0	23.0
6	KEAR	KEARNEY HIGH SCHOOL (2)	7.0	23.0	21.0	68.5	29.0
7	LSWH	Lee's Summit West High School (2)	5.5	26.0	16.0	81.0	20.5

STEINITZ IN ST. LOUIS

by Tony Rich



Wilhelm Steinitz is commonly known as the first World Champion of chess. However, the average tournament player probably doesn't know much about the events that surrounded the important match that gave him this title. Furthermore, even fewer realize the importance that my home town of St. Louis played in this match.

Wilhelm Steinitz (1834 – 1900) was born in Prague, but immigrated to the US in 1883. He developed an early talent for the game, and by the time he was 26, he was the champion of Vienna. Steinitz wouldn't look back; he was officially a professional chess player. After performing well for the first decade of his professional career, Steinitz took a bit of a hiatus to develop his now-famous principles of chess. He was the founder of such revolutionary ideas as building up little advantages, and articulating the idea that, only the player with the initiative has the right to attack.



His nearest rival, Johannes Zukertort (1842 - 1888), was a former student of the late Adolf Anderssen. Anderssen, unarguably the strongest master of his time, certainly would have been proud of the reputation that Zukertort built during his professional career. Despite a disastrous 9-3 loss to Steinitz in 1872, Zukertort was determined to make an impression. After eleven years of tuning his game, he was prepared; Zukertort showed his dominance by demolishing the field at the 1883 International Tournament in London.

Beating second-place Steinitz by an astounding three points, Zukertort appeared to be poised to take the throne

So, on a cool Monday, the 11th of January, 1886, the wheels were set in motion that would determine the fate of the World Championship. Zukertort and Steinitz agreed on a three-staged match. First, the players would meet in New York until someone won four games. Then the players would continue to St. Louis, where the first to win three more games would cause the event to culminate in a first-to-ten wins finale in New Orleans.

New York wasn't good for Steinitz; despite a first round win, Steinitz lost the following four games to Zukertort. Neither player was playing to the best of their abilities, but Zukertort was obviously acclimating better than his rival. In the February 3rd *Post Dispatch*, one gentleman was quoted as saying "The first five games were very unsatisfactory. Both players played badly and did themselves no credit. The games will not bear analysis, and only prove that either the players are entirely out of practice or are not possessed of sufficient nerve to play for such high stakes, or that they have deteriorated in their play."

Hoping to change this general opinion, both players stepped it up a notch and produced some magnificent games while in St. Louis. I like to think it was because of my wonderful city. This leg was held at the Harmoine Literary Club, located at the corner of Olive and 17th St. in a two-story red brick building. Today, a six-story building now stands on that corner, but one can imagine how grand the scene was.



1727 Olive Street, facing the NE Corner of 18th & Olive. This is the spot where Steinitz played his championship games in St. Louis, though the building at the time was a two-story and not a six-story structure (as pictured here).

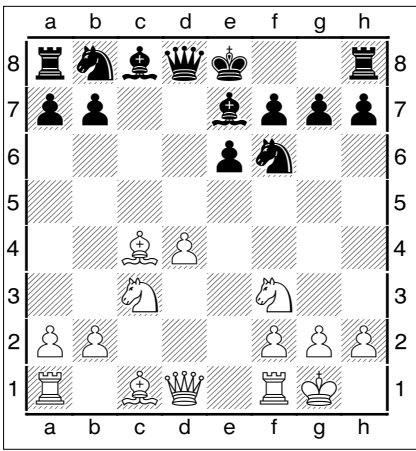
"It was not until 1:30 that many of the chessplayers of the city began to gather at the Harmonie club. They immediately sought the dining room on the first floor, where six rows of eleven chairs each had been placed for the spectators. The chairs faced the west and the spectators followed the game from a large board with a forty-eight inch field, elevated on an easel. Mr. Lewis Haller manipulated the pieces on the board. The champions themselves were to sit in the center of the reading room facing east and west upon a platform eight feet by six, and one foot high. This platform was placed directly in the center of the space afforded by folding the doors which were thrown open, giving the audience a side view of the great players who sat in such a position that they could throw side glances out on Olive Street."

With such wonderful playing conditions, Steinitz found his stride and won game after game. Had St. Louis not been in the lineup, who knows how Steinitz would have fared; we may have been saluting Zukertort as the first World Champion of chess. I will leave you with the following game, in which Steinitz shows exactly why he was our first king.

Zukertort, J - Steinitz, W [D26]
**World Championship Match, St. Louis (9),
 1886, Annotated by Tony Rich**

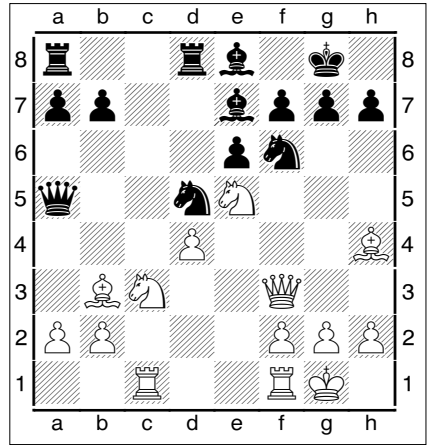
1.d4 d5 2.c4 e6 3.Nc3 Nf6 4.Nf3 dxc4 This delayed version of the Queen's Gambit

Accepted is rarely seen these days. Usually black will exchange on move 2, keeping the option of e5 (in one thrust) in mind. 5.e3 Common for the time, but 5. e4 was more challenging. 5...c5 6.Bxc4 cxd4 7.exd4 Be7 We have reached a very typical Isolate Queen Pawn position, where Zukertort will use his extra space and open lines for a direct kingside attack, and Steinitz will attempt to first blockade, then surround and capture the isolated pawn. Typically, if black develops his light-squared bishop on the h1-a8 diagonal, and white can effectively play d5, the resulting position tends to favor white. 8.0-0 Diagram

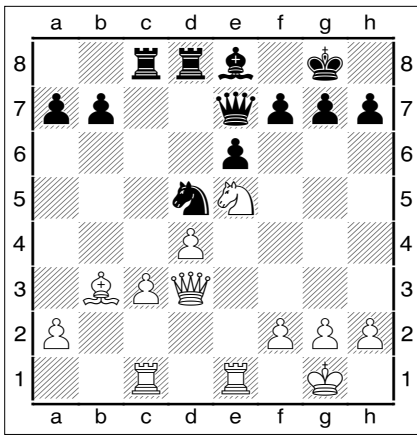


8...0-0 [8...Nc6 here would prevent the Qe2/Rd1 manover. Zukertort certainly wouldn't go in for 9.d5 at this point because black hasn't comitted his light-squared bishop yet (9.Bf4 0-0 10.Re1 Bd7 11.Qe2 Qa5 12.Nb5 a6 13.Bc7 b6 14.Nc3 Rfc8 15.Bf4 b5 16.Bb3 Qb6 17.Red1 Na5 18.Bc2 Nc4 also lead to an equal game in the 13th game of this match.) 9...exd5 10.Nxd5 Nxd5 11.Bxd5 0-0 And Black has solved all of his opening problems. If White captures on c6, the Black bishop pair balances the broken pawns.] 9.Qe2 Nbd7 This passive move does have an idea; Steinitz is aiming the knight (through b6) to guard d5. In IQP positions, black should attempt to blockade the queen pawn until it can be surrounded and captured. 10.Bb3 Nb6 11.Bf4 Not quite in the spirit of the game. [11.Bg5 would have continued the fight over the d5 square.] 11...Nbd5 12.Bg3 [Again, 12.Bg5 would have been better] 12...Qa5 13.Rac1 Bd7 [Steinitz could have also tried 13...b6 , aiming to develop his light-squared bishop on the long diagonal, and guarding d5 yet again.; (not 13...b5? 14.Nxd5 Nxd5 15.Bxd5 exd5 16.Qxe7)] 14.Ne5 Rfd8 15.Qf3 Be8! "The best square for the bishop in such

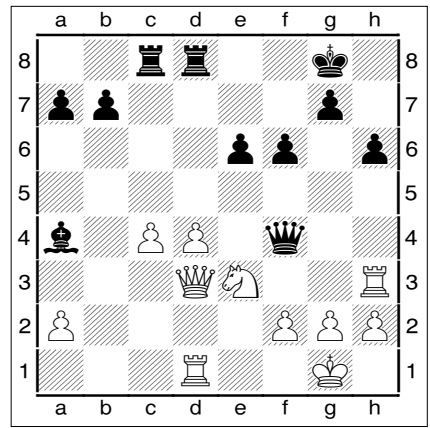
positions: here it does not interfere with the manoeuvres of the other black pieces, and in addition it carries out the important function of defending f7." - Euwe 16.Bh4 Diagram



16...Nxc3?! Not great, but what else? [16...Rac8 doesn't quite work out 17.Nxd5 Nxd5 (17...exd5 18.Ng4 Rxc1 19.Rxc1 Rc8 20.Rd1 (20.Rxc8 Qe1#) 20...Nxc3 21.Bxe7 h5 22.h3 Nh6 23.Qxh5 and it all comes tumbling down) 18.Bxe7 Nxe7 19.Qxb7] 17.bxc3 Qc7 18.Rfe1 [18.Rfd1? with the idea of supporting the advance of the hanging pawns. In positions like this, hanging pawns should be advanced, where there true strength can shine.] 18...Rac8 19.Qd3 "An aimless move" - Kasparov, who gives [19.Bg3 Bd6 (19...Qb6!?) 20.c4 Nd7 21.Nxd7 Rxd7 22.d5! Bxg3 23.hxg3 exd5 24.Qe3 Qd8 25.cxd5 "with a powerful passed pawn in the centre (the strength of which was then not yet appreciated!). Therefore, 19... Qb6! was better, with double-edged play." - Kasparov] 19...Nd5! the weakness of the hanging pawns becomes more apparent with less material on the board, just as an IQP weakens with less material. 20.Bxe7 Qxe7 Diagram



21.Bxd5?! [I prefer 21.c4 right away, as the bishop will guard the advanced pawns. 21...Nf4 22.Qe4 Qh4 23.Rcd1 b5 24.cxb5 Bxb5 25.Nxf7! and Black is in sore shape 25...Bc6 (25...Kxf7 26.Bxe6+ Kf8 27.Bxc8 with a big advantage 27...Be2 (27...Rxc8 28.Qf5+) 28.Qf5+ Qf6 29.Rd2) 26.Qe3 Kxf7 27.Bxe6+ Nxe6 (27...Kf8 28.Qa3+) 28.Qxe6+ Kf8 29.Re5! g6 30.g3 Qh6 31.Rc5 and white will regain his piece, maintain his attack, and be up two pawns] 21...Rxd5 22.c4 Rdd8 23.Re3? Perhaps the losing idea. The rooks really need to be behind the c- and d-pawns to support their advance. [Kasparov suggests 23.d5 b5 24.Qh3!] 23...Qd6 24.Rd1 f6 25.Rh3 h6 [there was no need for 25...fxe5 26.Qxh7+ Kf8 27.Rf3+ Bf7 28.Qh5 Rc7 (best) 29.c5 Qd5 30.Qh8+ Ke7 31.Qh4+ with a draw] 26.Ng4 [26.Ng6 doesn't quite work out either. One fun line is 26...Bxg6 27.Qxg6 Rxc4 28.Rxh6 Qxd4! 29.Qh7+ Kf8 30.Qh8+ (30.Rxf6+ Qxf6 and the queen still covers d8) 30...Kf7 31.Qxd8 Qxd8! and with mate looming, and both rooks en prise, white is hopeless.] 26...Qf4! preventing any knight sacrifices 27.Ne3 Ba4 Diagram



Notice how Steinitz is slowly pushing Zukertort back into a defensive role 28.Rf3 [28.Rd2! (Kasparov) 28...b5 29.Rf3 Qb8! 30.Qg6! Kh8 (30...bxc4 31.Ng4+/-) 31.Rg3 Qb7 32.c5 b4 "and although Black has the advantage, there is still a lot of play to come."] 28...Qd6 29.Rd2 Bc6 [29...b5 is the right plan] 30.Rg3 [30.d5! according to Kasparov, Steinitz feared 30...exd5 31.cxd5 (but he missed 31.Nf5! for example 31...Qe5 (31...Qd7 32.Rg3 dxc4 33.Nxh6+ Kh8 34.Qg6 Re8 35.h4+/-; 31...Qf8 32.Rg3 dxc4 33.Nxh6+ Kh8 34.Qxd8! Rxd8 35.Rxd8 Qxd8 36.Nf7+) 32.Re3 Qa1+ 33.Rd1 Qxa2 34.Nxh6+!/-) 31...Bxd5 32.Nxd5 Qxd5 33.Qxd5+ Rxd5] 30...f5! 31.Rg6 [31.c5 Qe7 32.Nc4 Bb5 33.a4 Bxc4 34.Qxc4 Rxc5 35.dxc5 Rxd2 36.h3 "with an indifferent, but not yet totally ruined position" - Kasparov] 31...Be4 32.Qb3 Kh7 33.c5 Rxc5 34.Rxe6 Rc1+ 35.Nd1 [35.Nf1 Qc7 36.Rd1 Rxd1 37.Qxd1 Qd7 38.Re5 Qxd4 39.Qxd4 Rxd4 40.f3 Bc6 41.Ne3 (41.Rxf5 Ra4+/-) 41...f4 42.Nf5 Rd2 43.Re7 Kg6 with a won ending] 35...Qf4 36.Qb2 Rb1 37.Qc3 Rc8 38.Rxe4 Qxe4 0-1

About Tony Rich:

Tony is a graduate of the University of Missouri - Rolla with a BS in Computer Science. He is a Network Engineer and security professional, working in St. Louis. In addition to writing chess articles, he contributes technical articles to various sources and has functioned as the editor of the *Missouri Chess Bulletin*. You can find out more about him and find other articles at <www.tonyrich.org>. For more information on chess in St. Louis, please visit <www.stlchess.com>.

SPOTLIGHT ON MISSOURI CHESS: KEVIN GUO

2006 Denker Representative

by Steve Goldberg, e-mail: scholasticchess@hotmail.com



In the Spring 2006 Missouri Chess Bulletin, Thomas Gossell is listed as the third-ranked chess player in Missouri (USCF 2213), one of only six Missourians rated 2200+.

This past February Kevin Guo topped a field of 174 competitors to capture the 2006 Missouri High School Championship. This performance was followed a week later by victory at the Missouri State (Grade 9-12) Boys and Girls Tournament of Champions, thereby crowning Kevin as Missouri's representative for the 2006 Denker Tournament of High School Champions. This annual national tournament, held concurrently in August with the U.S. Open, showcases high school champions from across the country.

Kevin finished in the middle of the pack at the Denker event in suburban Chicago, with a 3/6 score, but at age 14 was younger than every player ahead of him in the final crosstable. "I didn't have much time to prepare," he said, "so I basically just studied openings and played some chess online."

In fact, he says, these were the only tournaments he has played in this year. "I hope to be more active than I have been in the last year," he explains, but school is becoming more demanding. I

asked the 10th grader about his chess training regimen, and he replied that "I normally now don't have much time, because I am busy with school and other things. But, when I was younger, I used to spend quite a bit time on chess, about 2-3 hours a day." The son of a university mathematics professor, Kevin is considering majoring in biology in college, although he enjoys math and English as well. In addition to chess, he makes time for tennis and playing the violin.

Kevin sports a very respectable USCF rating of 1900 but notes that "I believe that chess primarily should be played for fun, not to win. Many play for the single purpose to gain rating points; this is a flawed principle. Enjoying the game will provide a much

better ground for improving play rather than a narrow goal of a win."

Stressing the importance of having passion for the game, he adds that "Openings and technical knowledge aren't everything. Oftentimes, improvement can only come about if one develops a true passion for chess. This is different from brute memorization." Yet, he reminds readers that "It is key to remember that chess is just a game.



Kevin Guo during the Denker competition earlier this year.

Don't take it too seriously!"

However, don't mistake Kevin's laid-back approach for a lack of competitiveness. In addition to his fine result at the 2006 state

high school championship, he finished in a seven-way tie for first at the 2005 Missouri Open, defeating master Ronald Luther in the process. His goals are not unreasonable, reaching for a rating between 1950 and 2000 this school year, while long term he would like to achieve the magical 2200 level.

Kevin will need to play in more tournaments to breathe that rarified air, but don't be surprised if we're referring to him as national master Kevin Guo eventually. We wish him well.

Note: Check out some of Kevin's games on page 29 & 30.



Starting Out: 1 e4!

Author: Neil McDonald
Publisher: Everyman Chess

BOOK REVIEW

The subtitle for this book is "a reliable repertoire for the improving player". Yes – the improving player – but not (my opinion) someone starting out in chess. Better in that case would be "How To Win In The Chess Openings" by Horowitz. Nevertheless the book is very good – even if the target audience ("the improving player") is a bit nebulous. McDonald is a GM and has done an excellent job of accumulating narrow, specific, yet educational material for each of his openings. No small task in accumulating the following in under 200 pages:

Open Games

- Latvian Gambit
- Elephant Gambit
- Philidor Defence
- Petroff Defence
- Scotch Opening

The Sicilian

- Classical
- Scheveningen
- Najdorf
- Dragon
- Sveshnikov
- Tamanov (and others)

Black's Other Defences

- Alekhine's Defence
- Caro-Kann Defence
- Scandinavian (and 1. ... Nc6)
- Pirc and other Fianchetto Defences
- French Defence

Notice; no Ruy Lopez. However he does briefly address some transpositions into the Spanish Game without absolutely labeling it as such – interesting. The lines he selects throughout the book are, from what I can gather, personal choices and there are good/short games for examples in every section. I recommend the book – and as far as the target audience is concerned – aren't we all "improving"?

Review by Loal Davis (NM)

FROM THE PAWN SHOP by Master Loal Davis

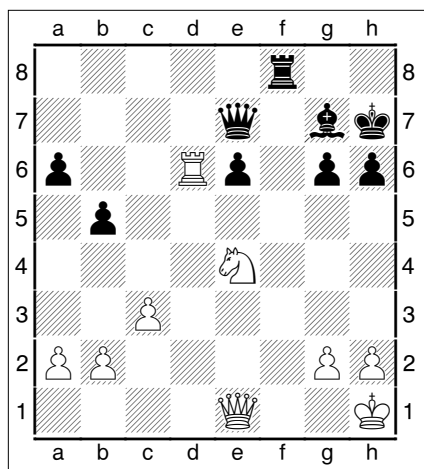
E-mail comments and games to loaldavis@yahoo.com



Loal Davis (2203)
- Brandon Lynch
(1771), U.S. Open
2006 (3),
09.08.2006
[Sicilian]

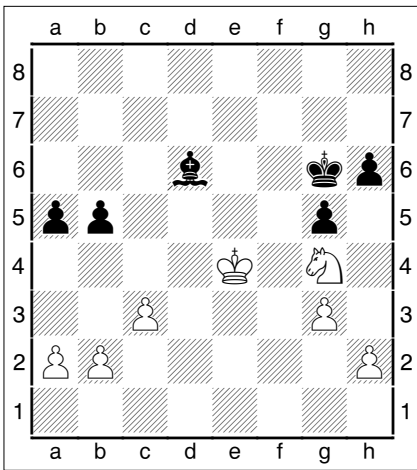
I had several
instructive endings
from the recent 2006

US Open in Chicago. Diagram



29.Rd6 Black might be able to hold this, but with good play, White still enjoys a nice central control/advantage that radiates to all sectors of the board giving him a good middlegame and/or ending. **29...a5 30.g3** It's usually problematic to decide how and when to advance Pawns in front of the King in creating "luft", but I believe

this is correct. To become fully active with Queen/Rook/Knight, White needs to eliminate back row problems, and 'h3' would possibly allow Black to cover escape squares with his Bishop. The theoretical "rule" is to place your Pawns on the same color square as his Bishop. **30...e5** And here, Black should want to place his Pawns on the opposite color of his Bishop. This ensures maximum mobility coupled with good square control (the Pawns covering the "other" color). By moving his Pawns on the same color of the Bishop, he takes away squares from the Bishop and/or relegates its function to that of a "Big Pawn". **31.Qd1** This is good harmony with the Knight. As the Knight already covers 'f2', the Queen covers 'f3', 'f1', 'b3', and above all 'd5'. [31.Qd2 might look more "aggressive", but with it, White leaves 'f3' and 'f1' open for a Queen/Rook invasion.] **31...Qb7 32.Qd5** More than content to enter an ending; Black's Bishop stinks, and there are Pawn targets all over the place. **32...Qa7 33.Nc5 Rf7** He thinks he has a threat - not so. **34.Kg2 Bf8 35.Rd7!** Forcing an ending - Black is lost. **35...Rxd7 36.Qxd7+ Qxd7 37.Nxd7 Bd6 38.Kf3** White made the correct decision in creating "luft". Centralization with the King is fast and smooth. **38...g5 39.Ke4 Kg7 40.Nxe5 Kf6 41.Ng4+ Kg6** Diagram



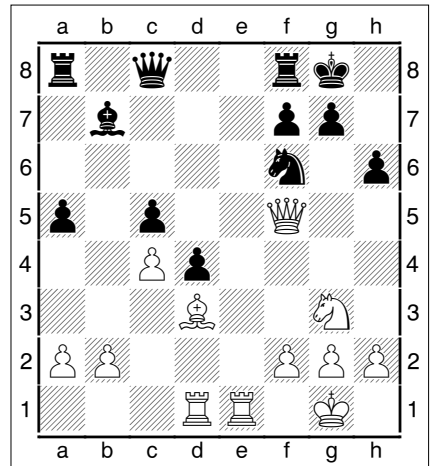
42.Ne3 Angling for 'f5'. The trick now is to remove potential targets of the Kingside so I can make the most of my Queenside majority. If White is not careful, Black may use his 'h' Pawn to run forward and liquidate all of the Pawns on the Kingside. This would leave the potential of sacrificing his Bishop for the last remaining Pawn on the other side of the board. This drawing scheme is eliminated by moving my Kingside Pawns to white squares. Unfortunately this increases the mobility of Black's Bishop - alas - I can't have everything. The plan is to play 'Nf5' followed by 'h3', and then 'g4'. This will manufacture a nicely supported post for the Knight and leave me free to advance on the Queenside with my King and extra Pawn. In this position, the Knight (secure) could leap into the fray at any appropriate moment.

42...h5 43.Nf5 Bf8 44.h3 b4 45.c4 [45.cxb4 axb4 renders the creation of a passed Pawn more difficult - Bf8.] 45...a4 46.b3! Care; if Black is allowed to play 'b3' himself, then 'Ba3' is a potential threat. 46...axb3 47.axb3 g4 Ah - he realizes the predicament and attempts to create a target on 'g3' for his Bishop - alas it never comes to that.

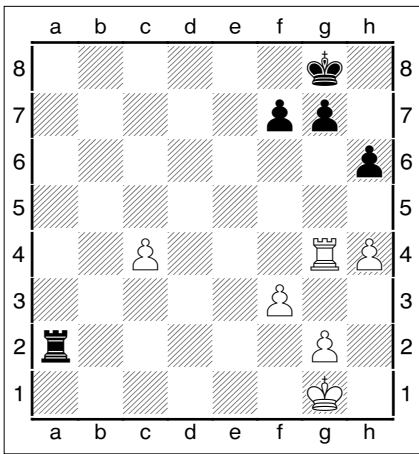
But even if it did, the Knight can defend 'g3' from either 'f5' or 'e4'. 48.hxg4 hxg4 49.Ke5 Kg5 50.Nd6 The 'c' Pawn is now ready to roll. 50...Bg7+ 51.Kd5 Bc3 52.c5 Kf6 53.c6 Ke7 54.c7 1-0

Loal Davis (2203) - Scott Lalli (2018)
U.S. Open 2006 (5), 10.08.2006
[Sicilian]

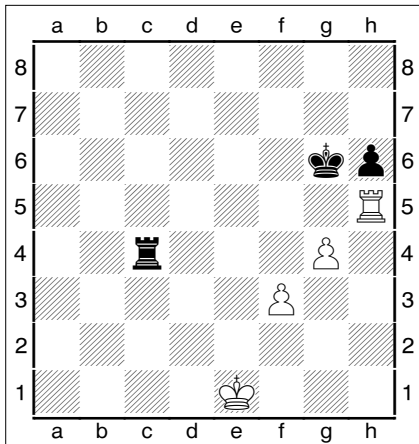
20...Qc8 Diagram



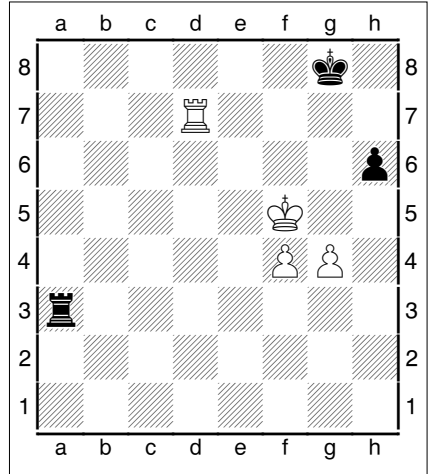
21.Re7 [Better is 21.Re5 and Black will drop the Pawn on 'c5'. Any Rook to the 'c' file to protect it, after an exchange of Queens, will fall to 'Ne7+'. My inexactitude in not playing this move renders this ending much more difficult that it should have been.] 21...Qxf5 22.Nxf5 Rab8 23.Rc7 Be4 24.Bxe4 Nxe4 25.f3 Ng5 26.Rxc5 Rxb2 27.Rxa5 Ne6 28.Nxd4 Nxd4 [28...Rd8 29.Rd5] 29.Rxd4 Re8 30.h4 Ree2 31.Rg4 Rxa2 32.Rxa2 Rxa2 Diagram



33.Kf1 This may not actually be won, but there is an "unwritten law" stating that Black must suffer greatly over the next 40 or 50 moves. 33...Kf8 34.g3 f5?! This can't be right. 35.Rf4 g6 36.g4 Kf7 37.h5 [37.gxf5 g5 38.hxg5 hxg5 39.Rg4 Kf6 is messy enough to allow good drawing chances for Black.] 37...Rc2 Good - this is irritating - and White must stretch for the full point. 38.Ke1 gxh5 39.Kd1 I'm striving to avoid the approaching ending where all of the Pawns are on the same side of the board. 39...Rf2 [39...Rc3 40.Kd2 is a big blun der. Black's Rook is driven away from the 'c' Pawn and White picks up the 'f' Pawn with check - then the 'h' Pawn.] 40.Ke1 [Once again 40.Rxf5+ Kg6 gives messy drawing chances.] 40...Rc2 41.Rxf5+ OK - into the ending we go. 41...Kg6 42.Rxh5 Rxc4 Diagram

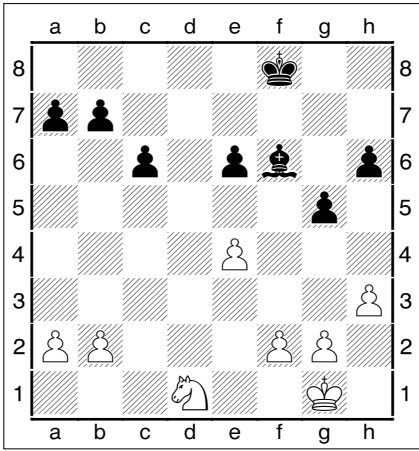


43.Kf2 Ra4 44.Rb5 Ra1 45.Kg3 Rg1+ 46.Kf4 Rf1 47.Rb6+ Kg7 48.Ke4 Ra1 49.Rd6 Ra4+ 50.Ke5 Ra5+ 51.Rd5 Ra3 52.f4 Kg6 53.Rd6+ Kg7 54.Rd7+ Kg8 [A big mistake is 54...Kg6 55.f5+ Kg5 56.Rg7+ Kh4 57.f6] 55.Kf5 Diagram



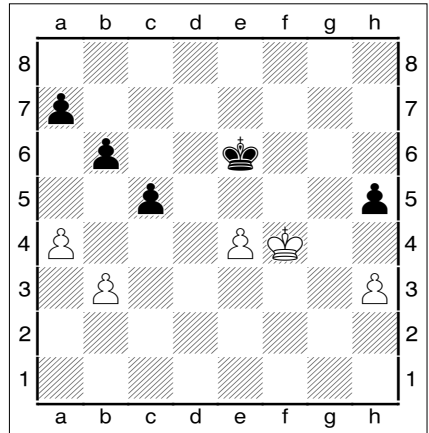
55...Ra6? I'm pretty sure this loses. The amazing/funny part of this move is that it resembles Black's strategy in the standard Philidor Rook & Pawn endgame position. Here, "cutting off the King" on the 3rd or 6th rank is a mistake. [55...Rg3 keeps White tied to the defense of an exposed Pawn and progress (promoting combined with mating aspirations) would be slow coming.] 56.Re7 I don't see how Black can deal with my idea of cutting off his influence on the 6th rank with 'Re6'. 56...Kf8 57.Re6 Ra5+ 58.Kg6 Ra4 59.Rf6+ Ke7 60.Rf7+ Ke8 [With 60...Ke6 61.f5+ Ke5 62.Kh5 Black is toast.] 61.Rf5 Now 'h6' is falling. 61...Ra6+ 62.Rf6 Ra1 Spite - He should resign. 63.Kxh6 Rh1+ 64.Kg7 Ke7 65.g5 Rh2 66.f5 Rh5 67.Re6+ Kd7 68.Kg6 Rh1 69.Re2 The Lucena Position - with an extra Pawn. 69...Ra1 70.Kf7 Ra5 71.Rd2+ Kc7 72.Ke6 Ra6+ 73.Ke7 Ra5 74.Rc2+ Kb7 75.f6 Rxc5 76.f7 Re5+ 77.Kf6 1-0

Harold Stenzel (2028) - Loal Davis (2203),
 U.S. Open 2006 (8), 12.08.2006
 [Giuoco Piano], Diagram

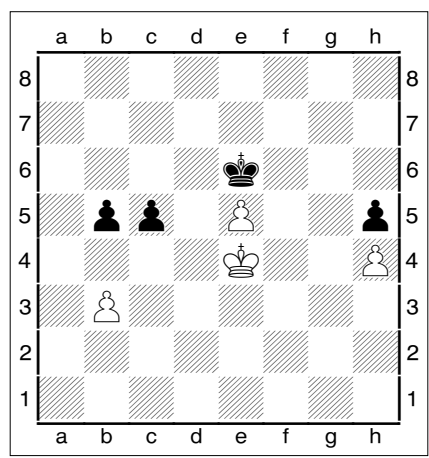


A fascinating ending. White may well be lost. I don't know this for a fact, and certainly didn't during the game; I just knew I had better game and would enjoy the ending with a shift in the Pawn structure and a Bishop versus Knight. If White can hold this ending, it is only with defense of the very highest order. White's perpetual problem is that I have a Queenside majority. This can be used to manufacture a passed Pawn for a touchdown, or to be used as a decoylure as I invade the other side of the board. On the Kingside, I enjoy a split three holding back a set of four Pawns. To manufacture a passed Pawn, White must play 'f4'. When this happens I'm going to make sure he is left with an isolated Pawn. My King is right there set to blockade. This coupled with the "outside passed Pawn" should grant Black the win. I don't think a Bishop exchange on 'c3' alters the overall slant of the ending, just slightly modifying the character/nature of the passed Pawn on the Queenside. White attempts the obvious plan of preserving his Knight and freeing it from the defense of 'b2' so he can hopefully find some activity. 26.Nd1 Bd4 Yes - Mister Knight is mine. 27.Kf1 Ke7 28.Ke2 e5

29.b3 h5 A further clamp down on the Kingside that prevents any ideas of a white King invasion. 30.Ne3 Bxe3 31.Kxe3 Kd6 Not necessary; the King is already set for the blockade. [31...c5 should be played immediately.] 32.g3 c5 33.f4 exf4+ 34.gxf4 gxf4+ 35.Kxf4 Ke6 36.a4 Slowing Black down to his low gear. Alas - it is not enough. 36...b6 Diagram



[Not 36...a6 37.a5 allowing White a set of two holding three; en passant.] 37.e5 [With 37.Kg5 a6 38.Kxh5 b5 39.axb5 axb5 40.Kg4 c4 41.bxc4 b4 White is out of the "Pawn Square".] 37...a6 38.h4 b5 39.axb5 axb5 40.Ke4 Diagram



40...b4! [Now 40...c4? 41.bxc4 bxc4 42.Kd4 c3 43.Kxc3 Kxe5 44.Kd3 Kf4 45.Kd4 Kg4 46.Ke4 Kxh4 47.Kf4 only draws.] **41.Kd3** [Once again 41.Kf4 c4 42.bxc4 b3 is lights out.] **41...Kxe5 42.Ke3** [If 42.Kc4 Kd6 43.Kd3 Kd5 44.Kc2 Ke4 45.Kd2 Kd4 46.Kc2 Ke3 47.Kc1 Kd3 48.Kb2 Kd2 49.Kb1 Kc3 50.Ka2 Kc2 White is outflanked and loses the entire Queenside.] **42...Kf5** It is simple to count the number of moves to Queen (capture the Pawn, move out of the way, and promote). Black = 8. White = 10. [If instead 42...Kd5 43.Kd3 c4+ 44.bxc4+ Kc5 45.Kd2 Kxc4 46.Kc2 b3+ 47.Kb2 Kb4 48.Kb1 Kc3 49.Kc1 Kd3 50.Kb2 Ke3 51.Kxb3 Kf3 52.Kc3 Kg3 53.Kd3 Kxh4 54.Ke2 Kg3 55.Kf1 again only draws.] **43.Kd3** [And 43.Kf3 c4 44.bxc4 b3 is a theme we've seen before.] **43...Kg4 44.Kc4 Kxh4 45.Kxc5 Kg4** It's a good practice not to play 'Kg3'; that puts the King on a checking square ('b8'). **46.Kxb4 h4 47.Kc5 h3 48.b4 h2 49.b5 h1Q 50.Kb6 Qh7 51.Kc6 Qa7 52.b6 Qb8 0-1** **Note:** Check out some of Loal's games on page 29.

MISSOURI OPEN CHAMPIONS

—Taken from www.jimvoelker.com

- 1941 E. Marchand
- 1942 Robert Steinmeyer*, F. Anderson (Steinmeyer won playoff)
- 1943 - 1946 (not held)
- 1947 Robert Steinmeyer
- 1948 John Ragan (called MO State Championship; held in Kansas City)
- 1949 (not held)
- 1950 Robert Steinmeyer, G. Tiers
- 1951 H. Law
- 1952 W. Newberry
- 1953 John Ragan
- 1954 Robert Steinmeyer
- 1955 (not held)
- 1956 John Ragan, R. Gross
- 1957 John Ragan
- 1958 John Ragan, Robert Steinmeyer
- 1959 John Ragan
- 1960 J. Wright
- 1961 John Ragan
- 1962 H. Myers, I. Theodorovich
- 1963 H. Branch*, J. Penquite, E. Rodernich
- 1964 D. Moran
- 1965 (not held)
- 1966 Leroy Muhammad
- 1967 Leroy Muhammad
- 1968 Leroy Muhammad
- 1969 Elliott Winslow
- 1970 W. Martz (WI), John Ragan*
- 1971 Doug McClintock (73 entries - St. Louis)
- 1972 Elliott Winslow*, John Ragan, J. Frankle (IA), Jerry Mays (64 entries - St. Louis)
- 1973 J. Frankle (IA); Second: E. Winslow*, M. Appleberry (TN), Doug Breckenridge (132 entries - Kansas City)
- 1974 Robert Jacobs*, John Ragan, Elliott Winslow (56 entries - St. Louis)
- 1975 Elliott Winslow*, John Ragan, James Davies (43 entries - Rolla)
- 1976 Kenneth Jones*, George Payne (KS) (63 entries - Kansas City)
- 1977 Evan Michaelides*, Mark Hopfinger, John Ragan (81 entries - St. Louis)
- 1978 Charles Lawton (64 entries - Springfield)
- 1979 Ken Jones, Charles Lawton (63 entries - KC)
- 1980 Steven Ahlstrom (113 entries - St. Louis)
- 1981 Michael Brooks*, James McLaughlin, Aaron Dubin (74 entries - Columbia)
- 1982 Terence Niehoff (88 entries - Kansas City)
- 1983 John Readey*, Doug Eckert, Craig Campbell (NE), Sheldon Williams, Aaron Dubin (120 entries - St. Louis)
- 1984 John Readey*, William Coe, Ken Jones (56 entries - Rolla)
- 1985 Dennis Younglove*, Michael Brooks, Doug Eckert, Ken Jones (90 entries - Kansas City)
- 1986 Terence Niehoff*, Ken Jones, Doug Eckert, Jim McLaughlin, Gary White (109 entries - St. Louis)
- 1987 IM Michael Brooks (72 entries - Columbia)
- 1988 IM Michael Brooks (111 entries - Kansas City)
- 1989 Ken Jones (100 entries - St. Louis)
- 1990 IM Michael Brooks, Doug Eckert (114 entries - Springfield)
- 1991 IM Michael Brooks, GM Sergey Kudrin (128 entries - Kansas City)
- 1992 IM Michael Brooks (81 entries - St. Louis)
- 1993 Open Section: GM Gregory Kaidanov (KY) 2nd: Ken Jones*, Robert Jacobs, IM Michael Brooks, David Timberlake (AR), Ron Luther (28 entries - Springfield); Reserve Section Joshua Frank (66 entries)
- 1994 Open Section: Dale Sharp (WI) 2nd: Stephen Wharry (OK), Jim Voelker*, IM Michael Brooks (36 entries - Kansas City); Reserve Section: Warren Long (38 entries)
- 1995 GM Semion Palatnik (TN), IM Michael Brooks, Robert Jacobs, Ryan Porter, Aaron Dubin (90 entries - St. Louis)
- 1996 Robert Jacobs (Columbia)
- 1997 Ron Luther*, Dale Rigby (54 entries - KC)
- 1998 Jim Voelker*, Ron Luther, Bob Holliman (57 entries - Columbia)
- 1999 George Essig*, Ron Luther (56 entries - Rolla)
- 2000 Friedemann Brock (Rolla)
- 2001 Pavel Berez*, Jim Ellis (49 entries - Columbia)
- 2002 Ron Luther (73 entries - Rolla)
- 2003 GM Pavel Blatny (NY), 2nd place: Ken Jones*, IM Michael Brooks, Pavel Berez*, Doug Eckert, Loal Davis, Ron Luther, Jim Ellis, Bob Holliman, Waldo Odak, Thomas Gossell, Tony Cao (74 entries - Rolla)
- 2004 IM Stanislav Kriventsov (LA), 2nd place: Jim Voelker*, Jim Ellis, Loal Davis, Bob Jacobs, Bob Holliman, Waldo Odak (60 entries - Rolla)
- 2005 Bob Holliman*, Jim McLaughlin, Thomas Gossell, Zeb Fortman III, Panagiotis Massouros, Kevin Guo, Jim Voelker* (64 entries - St. Louis)
- 2006 Ron Luther*, IM Michael Brooks (6-player invitational section) (162 entries - Kansas City)

Thanks to Charles Burton and Bill Merrell for compiling most of this list. The state championship title usually goes to the highest scoring Missouri resident, sometimes on tiebreak if the scores are not perfect. In some years tiebreak was not used, so there might be a number of co-champions.

GAMES FROM MISSOURI PLAYERS

E-mail games to kfee@kc.rr.com in Chessbase or pgn format

Selden Trimble - James Hammersmith [D59]

U.S. Open Chicago (3), 09.08.2006

Annotated Selden Trimble

1.d4 Nf6 2.c4 e6 3.Nc3 d5 4.Bg5 Be7 5.e3 h6 6.Bh4 0-0 7.Nf3 b6 8.cxd5 Nxd5 9.Bxe7 Qxe7 10.Nxd5 exd5 11.Rc1 Be6 12.Bd3 c5. Up to here, everything appears in ECO, D59. The usual line seems to be 13.dxc5 bxc5 14. O-O, with White getting a slight plus. 13.Ne5 c4 After 13. ... cxd4 14. exd4, it's not clear how Black takes advantage of his queen being lined up on the file against White's king. White might be able to get a rook on c7 in an endgame, not a pleasant prospect for Black. So Black must have thought that his queenside pawn majority would give him better chances. 14.Bb1 Qb4+ 15.Qd2 White is happy to enter an endgame with a centralized king, a well-posted knight, and the better bishop. 15...Qxd2+ 16.Kxd2 Rc8 17.Rhg1 White wants to play g4 followed by f4. Black's bishop would then have to lose a move while White got his kingside pawns rolling. 17...Nc6 18.g4. 18...Nxe5? This is a mistake. White's king can take shelter on d4 and his e5-pawn will give him extra ammunition against Black's king. 19.dxe5 b5 20.f4? White should have played 20, Kc3, intending Kd4. If then 20. ... g5, White has 21. h4 followed by f4. Black's kingside will still be opened up for attack. 20...Rd8? Black should play b4, preventing White's coming king maneuver and getting play on the queenside. 21.f5 Bc8 22.g5 h5 23.Kc3 a5 24.Kd4 Ba6? Pointless. Black underestimates White's pawns. A rook lift by Ra6 makes more sense. This would help counteract White's pawn push on the kingside. 25.f6 After 25 g6 f6, White's bishop is blocked by his own pawns. White probably wins Black's h-pawn and White certainly has a dangerous passed pawn, but the game move just looked better to me. 25...Bc8 The natural g6 is met by 26. e6. 26.g6 Black's king position now breaks open. 26...gxh6 27.gxf7+ Kxf7 28.Bg6+ Ke6 29.exf6 Kxf6 30.Rc1+ White has a tremendous advantage because Black's pieces are not developed and his king is being attacked by two rooks and a bishop. Even White's king is taking the c5- and e5- squares away from Black's king. 30...Ke7 I believe Ke6 was better. But after 31. Bxh5, Black will have to exchange a lot of pieces to prevent mate. And he cannot survive an endgame against White's outside h-pawn. 31.Rf7+ 1-0

Epplin-Zapf, Tom (1664) - Clark, Mike (1764) [B30]
Missouri Class Championships Columbia, MO (1), 10.06.2006

1.e4 c5 2.Nf3 Nf6 3.Nc3 Nc6 4.Bb5 g6 5.0-0 Bg7

6.d3 0-0 7.Bg5 h6 8.Bh4 g5 9.Bg3 Nh5 10.Qd2 Nxc3 11.fxc3 a6 12.Bxc6 bxc6 13.Rab1 d5 14.e5 d4 15.Na4 Qd5 16.Nb6 Qxa2 17.Nxa8 Qe6 18.Nb6 g4 19.Nh4 h5 20.Nf5 Qxe5 21.Nxc8 e6 22.Rbe1 Qc7 23.Nxc7 Kxc7 24.Qg5+ Kh7 25.Rf6 Rg8 26.Rh6# 1-0

Epplin-Zapf, Tom (1664) - Garber, Milton (1568)
[C01], Missouri Class Championships Columbia, MO (3), 10.06.2006

1.e4 e6 2.d4 d5 3.exd5 exd5 4.c4 Bb4+ 5.Nc3 Qe7+ 6.Qe2 Be6 7.cxd5 Bxd5 8.Bd2 Bc6 9.d5 Bd7 10.Qxe7+ Nxe7 11.Bc4 0-0 12.Nge2 a6 13.0-0 Bf5 14.Rfe1 Nd7 15.a3 Bd6 16.Ng3 Bg6 17.Nge4 Rfe8 18.Nxd6 cxd6 19.Bf4 Nb6 20.Bb3 Rad8 21.g4 Bd3 22.Rad1 Bc4 23.Bxc4 Nxc4 24.Rd4 Nb6 25.Rde4 Kf8 26.a4 Nec8 27.b3 Rxe4 28.Rxe4 Ne7 29.Rd4 Ke8 30.Ne4 Nbc8 31.Bg3 f5 32.Ng5 fxg4 33.Ne6 Nf5 34.Rf4 g6 35.Nxd8 Kxd8 36.Rxg4 Nb6 37.Re4 Nxd5 38.Bxd6 Nxd6 39.Rd4 Kc7 40.Rxd5 Ne4 41.f3 Nf6 42.Rd4 Nd7 43.b4 Ne5 44.Kg2 Nc6 45.Rf4 Kd6 46.Rf7 h6 47.Rxb7 a5 48.b5 1-0

Epplin-Zapf, Tom (1664) - Marler, Alex (1759) [C55]
Missouri Class Championships Columbia, MO (4), 11.06.2006

1.e4 e5 2.Nf3 Nc6 3.Bc4 Nf6 4.Nc3 Nxe4 5.Nxe4 d5 6.Bxd5 Qxd5 7.d3 Bg4 8.h3 Bh5 9.Bg5 f6 10.Bxf6 Nd4 11.g4 Bg6 12.Nfd2 Bxe4 13.dxe4 Qc6 14.c3 Qxf6 15.cxd4 exd4 16.Qa4+ c6 17.0-0 h5 18.Qd1 Qf4 19.e5 0-0-0 20.gxh5 Kb8 21.Nc4 Qf7 22.Qb3 Rxh5 23.Rae1 Bb4 24.Re4 Rdh8 25.Qxb4 Rxh3 26.Qd6+ Ka8 27.Nb6+ axb6 28.f3 Rg3+ 0-1

Marler, Alex (1759) - Clark, Mike (1764) [B64]
Missouri Class Championships Columbia, MO (5), 11.06.2006

1.e4 c5 2.Nf3 Nc6 3.d4 cxd4 4.Nxd4 Nf6 5.Nc3 d6 6.Bg5 e6 7.Qd2 Be7 8.f4 0-0 9.0-0-0 a6 10.Be2 Qc7 11.Bf3 Rd8 12.Rhe1 Bd7 13.g4 Rac8 14.h4 b5 15.Nxc6 Bxc6 16.Bxf6 Bxf6 17.g5 Be7 18.h5 b4 19.Ne2 d5 20.e5 a5 21.g6 fxg6 22.hxg6 h6 23.Nd4 Bd7 24.Bg4 Qb6 25.Kb1 Rc4 26.b3 Rc7 27.f5 Bg5 28.Qe2 exf5 29.Bf3 Be6 30.Qg2 Rcd7 31.Qh2 Be7 32.Qf4 Rf8 33.Rh1 Bg5 34.Qh2 Be3 35.Ne2 f4 36.Qg2 Qc5 37.Rh5 Rc8 38.Ng1 Rdc7 39.Rh2 Rd7 40.Nh3 d4 41.Ng5 hxg5 42.Rdh1 Kf8 At this point, White's flag fell. 0-1

Clark, Mike (1764) - Huff, Daniel (2012) [C02]
Missouri Class Championships Columbia, MO (4), 11.06.2006

1.e4 e6 2.d4 d5 3.e5 c5 4.c3 Nc6 5.Be3 Qb6 6.Qd2
Nh6 7.Nf3 Ng4 8.Be2 cxd4 9.cxd4 Bb4 10.Nc3 0-0
11.h3 Nxe3 12.fxe3 f6 13.exf6 Rxf6 14.0-0 Bd7
15.Ng5 Raf8 16.Rxf6 gxf6 17.Nf3 Ne7 18.a3 Bxc3
19.bxc3 Nf5 20.g4 Nd6 21.Ne1 Ne4 22.Qc2 Qc7
23.Bf3 Qg3+ 24.Qg2 Qxg2+ 25.Kxg2 Nxc3 26.Nd3
b6 27.Kg3 Rc8 28.Rf1 Bb5 29.Bg2 Bxd3 30.Rxf6
Ne4+ 31.Bxe4 Bxe4 32.Rxe6 Rf8 33.Re7 Rf7
34.Re8+ Kg7 35.g5 h6 36.gxh6+ Kxh6 37.Re6+ Kg5
38.h4+ Kf5 39.Re5+ Kf6 40.h5 Re7 41.Kf4 Rxe5
42.dxe5+ Ke6 43.a4 Bd3 44.Kg5 Kxe5 45.Kh6 Ke4
46.Kg7 Kxe3 47.h6 d4 48.h7 Bxh7 49.Kxh7 d3 0-1

**Bennett, David M (2131) - Trimble, Selden (1890)
[C01], US Open 2006 Chicago (8.77), 12.08.2006**

1.e4 e6 2.d4 d5 3.exd5 exd5 4.Bd3 Nc6 5.c3 Bd6
6.Nf3 Bg4 7.0-0 Nge7 8.Be3 Qd7 9.b4 f6 10.a4 g5
11.Nbd2 Ng6 12.Qc2 Nh4 13.Nxh4 gxh4 14.Bg6+
hxg6 15.Qxg6+ Kf8 16.Qxf6+ Kg8 17.Qg5+ Qg7
18.Qxd5+ Kf8 19.h3 Bd7 20.b5 Ne7 21.Qxb7 Re8
22.Kh1 Rg8 23.Rg1 Nf5 24.Nc4 Qf6 1/2-1/2

**Davis, Loal W (2203) - Reid, Paul M (1717) [B15]
US Open 2006 Chicago (1.166), 08.08.2006**

1.e4 g6 2.d4 Bg7 3.Nc3 c6 4.Nf3 d5 5.h3 dxe4
6.Nxe4 Nd7 7.c3 Ngf6 8.Nxf6+ Nxf6 9.Bc4 0-0 10.0-0
Bf5 11.Re1 Be4 12.Ne5 Bd5 13.Bd3 Rc8 14.Qe2 c5
15.c4 Be6 16.d5 Bd7 17.Bg5 Re8 18.Qf3 Qc7
19.Re2 b5 20.cxb5 Qd6 21.Bc4 Bf5 22.Nc6 Qc7
23.Rae1 Bf8 24.Bxf6 1-0

**Davis, Loal W (2203) - Reid, Paul M (1717) [B15]
US Open 2006 Chicago (1.166), 08.08.2006**

1.e4 g6 2.d4 Bg7 3.Nc3 c6 4.Nf3 d5 5.h3 dxe4
6.Nxe4 Nd7 7.c3 Ngf6 8.Nxf6+ Nxf6 9.Bc4 0-0 10.0-0
Bf5 11.Re1 Be4 12.Ne5 Bd5 13.Bd3 Rc8 14.Qe2 c5
15.c4 Be6 16.d5 Bd7 17.Bg5 Re8 18.Qf3 Qc7
19.Re2 b5 20.cxb5 Qd6 21.Bc4 Bf5 22.Nc6 Qc7
23.Rae1 Bf8 24.Bxf6 1-0

**Faerman, Lily (1919) - Davis, Loal W (2203) [D02]
US Open 2006 Chicago (2.152), 08.08.2006**

1.d4 d5 2.Nf3 Nf6 3.Bf4 c6 4.c3 Qb6 5.Qb3 Bf5 6.e3
Nbd7 7.Nbd2 h6 8.h3 e6 9.c4 Be7 10.c5 Qxb3
11.axb3 0-0 12.b4 a6 13.Nb3 Rfe8 14.Na5 Ra7
15.Be2 Ne4 16.g4 Bh7 17.h4 f6 18.g5 hxg5 19.hxg5
fxg5 20.Bc7 Rc8 21.Bh2 Rf8 22.Rg1 Bf5 23.Bd3
Nexc5 24.bxc5 Bxd3 25.Nxg5 Bxg5 26.Rxg5 Bb5
27.Bc7 Rf7 28.f4 Nxc5 29.dxc5 Rxc7 30.Re5 Kf7
31.Nb3 Ra8 32.Nd4 Re7 33.Kf2 Rh8 34.Kg3 g6
35.b4 Bd3 36.Rg5 Kf6 37.Rg1 Reh7 38.Nf3 Be4
39.Ne5 Rh3+ 40.Kf2 Rh2+ 41.Ke1 Rb2 42.Nxg6
Rhh2 0-1

Cordova, Emilio (2570) - Davis, Loal W (2203) [E53]

US Open 2006 Chicago (4.137), 09.08.2006

1.d4 d5 2.Nf3 Nf6 3.c4 e6 4.Nc3 Bb4 5.e3 c5 6.a3
Bxc3+ 7.bxc3 0-0 8.Bd3 dxc4 9.Bxc4 Qc7 10.Bb3 b6
11.0-0 Nbd7 12.Bb2 Bb7 13.c4 Rad8 14.Qe2 Rfe8
15.Rfd1 Qc6 16.a4 Ne4 17.a5 Qc7 18.Ne1 e5
19.dxe5 Nxe5 20.Ba4 Rxd1 21.Rxd1 Bc6 22.Bc2 f6
23.f3 Nd6 24.Bxe5 Rxe5 25.Qd3 Nf5 26.f4 1-0

**Davis, Loal W (2203) - Bryant, Todd C (1991) [B70]
US Open 2006 Chicago (7.48), 11.08.2006**

1.e4 c5 2.Nf3 g6 3.d4 cxd4 4.Nxd4 Nc6 5.Be2 Bg7
6.Nb3 Nf6 7.Nc3 d6 8.0-0 Be6 9.Bg5 0-0 10.Kh1 Rc8
11.f4 Qd7 12.Bf3 a6 13.Rf2 Ng4 14.Rd2 Ne3 15.Qe2
Nc4 16.Nc5 Qe8 17.Nxe6 Nxd2 18.Nxg7 Kxg7
19.Qxd2 f6 20.Bh4 Qd8 21.Nd5 e5 22.Bg4 Rb8
23.Rf1 Qa5 24.Oxa5 Nxa5 25.fxe5 fxe5 26.Bf6+ Kh6
27.Rf3 1-0

**Stenzel, Harold G (2028) - Davis, Loal W (2203)
[C53], US Open 2006 Chicago (8.33), 12.08.2006**

1.e4 e5 2.Nf3 Nc6 3.Bc4 Bc5 4.c3 Qe7 5.0-0 Nf6
6.d4 Bb6 7.Re1 d6 8.h3 0-0 9.Bg5 h6 10.Bh4 g5
11.Bg3 Nh5 12.Nxe5 Nxe5 13.Bxe5 dxe5 14.Qxh5
Qf6 15.Re3 Qg7 16.Rf3 exd4 17.cxd4 Bxd4 18.Nc3
c6 19.Rd1 Be6 20.Bxe6 fxe6 21.Rdd3 Rxf3 22.Rxf3
Rf8 23.Rxf8+ Kxf8 24.Qf3+ Qf6 25.Qxf6+ Bxf6
26.Nd1 Bd4 27.Kf1 Ke7 28.Ke2 e5 29.b3 h5 30.Ne3
Bxe3 31.Kxe3 Kd6 32.g3 c5 33.f4 exf4+ 34.gxf4
gxf4+ 35.Kxf4 Ke6 36.a4 b6 37.e5 a6 38.h4 b5
39.axb5 axb5 40.Ke4 b4 41.Kd3 Kxe5 42.Ke3 Kf5
43.Kd3 Kg4 44.Kc4 Kxh4 45.Kxc5 Kg4 46.Kxb4 h4
47.Kc5 h3 48.b4 h2 49.b5 h1Q 50.Kb6 Qh7 51.Kc6
Qa7 52.b6 Qb8 0-1

**Musulini, Rade (557) - Guo, Kevin (1914) [A29]
Denker Tournament 2006 Chicago (3.22),
08.08.2006**

1.c4 e5 2.Nc3 Nf6 3.Nf3 Nc6 4.g3 d6 5.Bg2 Be6 6.d3
h6 7.0-0 Be7 8.h3 0-0 9.e4 Kh7 10.Nd5 Rg8 11.Qe2
Nd7 12.Nxe7 Qxe7 13.g4 a6 14.Be3 b5 15.b3 Na5
16.g5 c5 17.Nh4 g6 18.Nf3 h5 19.Kh2 Nc6 20.h4 Kg7
21.Nd2 b4 22.f4 exf4 23.Rxf4 Nde5 24.Bh3 Bxh3
25.Kxh3 Ng4 26.Raf1 Rgf8 27.Nf3 a5 28.Nh2 Nce5
29.d4 Nxh2 30.Kxh2 Ng4+ 31.Kg3 a4 32.Rxg4 hxg4
33.Qxg4 axb3 34.axb3 Ra3 35.Qd1 Qxe4 36.Bf2 Rh8
37.Kh3 Ra2 38.dxc5 Rxh4+ 39.Kg3 Qf4+ 40.Kg2
Rh2+ 41.Kg1 Qg3+ 42.Bxg3 Rg2# 0-1

**Guo, Kevin (1914) - Pedraza, Matthew (1665) [C42]
Denker Tournament 2006 Chicago (4.18),
09.08.2006**

1.e4 e5 2.Nf3 Nf6 3.Nc3 Bb4 4.d3 d5 5.exd5 Nxd5
6.Bd2 0-0 7.Be2 Nc6 8.Nxd5 Bxd2+ 9.Qxd2 Qxd5
10.0-0 Bd7 11.Rfd1 Rfe8 12.c4 Qd6 13.Kf1 Ne7

14.b4 Ng6 15.g3 Bh3+ 16.Kg1 h6 17.Ne1 Nf4 18.Bf3
Og6 19.Kh1 Nh5 20.Bxb7 Rad8 21.Bg2 Bxg2+
22.Nxg2 e4 23.d4 Qg4 24.Qe3 f5 25.d5 g5 26.Qxa7
f4 27.Qd4 Qh3 28.gxf4 e3 29.fxg5 exf2 30.Rd3 Re1+
31.Rxe1 fxe1Q+ 32.Nxe1 Qf1+ 33.Qg1 Rf8 34.gxh6+
Kh7 35.Re3 Qxc4 36.Rf3 Rg8 37.Qe3 Qxa2 38.Rf7+
Kg6 39.Qe6+ Kg5 40.Of5+ Kh4 41.Nf3# 1-0

Guo, Kevin (1914) - Adkins, Christopher (1690)
[C54], Denker Tournament 2006 Chicago (6.20),
11.08.2006

1.e4 e5 2.Nf3 Nc6 3.Bc4 Bc5 4.c3 Nf6 5.d4 exd4
6.cxd4 Bb4+ 7.Bd2 Bxd2+ 8.Nbxd2 d6 9.0-0 0-0
10.Qc2 Bd7 11.a3 a6 12.b4 b5 13.Bd3 Re8 14.Rfe1
h6 15.Rac1 Rc8 16.Qc3 Ne7 17.a4 c6 18.a5 Ng6
19.g3 Rf8 20.Qb2 Ne8 21.e5 dxe5 22.dxe5 Nc7
23.Nd4 Nd5 24.e6 Be8 25.Bxg6 fxg6 26.e7 Nxe7

27.Ne6 1-0

Missouri Chess Association Scholastic

Mitch Sansom, 1466 - Elijah Shore, 928
MISA Scholastic-High School

1.e4 c5 2.Nf3 d6 3.d4 f5 4.e5 Nc6 5.Bb5 Bd7 6.exd6
exd6 7.0-0 a6 8.Re1+ Nce7 9.Bxd7+ Qxd7 10.dxc5
dxc5 11.Qxd7+ Kxd7 12.Ne5+ Ke8 13.Be3 Nd5
14.Bd2 Bd6 15.Ng6+ Nge7 16.Nxh8 c4 17.Nc3 Nb4
18.Rac1 Rd8 19.Bg5 h6 20.Bxe7 Bxe7 21.Ng6 Nc6
22.Nxe7 Nxe7 23.Rcd1 b5 24.Nd5 Rd7 25.Rxe7+
Rxe7 26.Nxe7 Kxe7 27.Kf1 g5 28.Ke2 Kf6 29.Rd6+
Kg7 30.Rxa6 h5 31.Rb6 g4 32.Rxb5 Kg6 33.Rc5 h4
34.Rxc4 Kg5 35.a4 f4 36.a5 1-0

.....
—Continued from page 6, MCA Minutes

implemented.

- It was proposed that the code words used to access the MCA Bulletin on the Web be removed, to allow any one visiting the Web site to view them, not just current MCA members. This was approved by a majority vote.
- Charlie Ward described a request from Joseph Garnier for posting on the MCA Web site a notice offering chess lessons at a rate of \$25 per hour. Garnier is not a current MCA member. It was agreed that this constituted a form of advertising, and that if this notice were posted other people would request that they be allowed to post similar advertisements. There was a long discussion regarding accepting advertisements for the MCA Bulletin and/or the Web site. Our 501(c)3 status will allow accepting paid advertisements, but the MCA does not want to be in the position of being seen to endorse or support products or services offered by advertisers. Tony Rich agreed to prepare a proposal for an MCA policy on advertisements for the February 4 meeting.
- Ken Fee brought up an observed problem of players in the Invitational agreeing on a 3-move draw in order to guarantee splitting of the cash prize. After some discussion it was proposed that a 30-move draw rule be imposed on all MCA title tournaments. During discussion it was pointed out that this would be almost impossible to enforce in any tournament where players posted their results on the pairing sheets and left the playing room. Following discussion, imposing the 30-move rule was approved for the Invitational by a vote of 6-3 and extending it to all sections of the Missouri Open MCA was approved by a vote of 5-4. TDs of other MCA-sponsored events should consider this as a guideline.
- Bob Jacobs had submitted a proposal that Robert Steinmeyer (deceased 1988) be added to the Missouri Hall of Fame. His addition to the Hall of Fame was agreed to unanimously. After some discussion it was agreed that a presentation ceremony would be held at the 2007 Missouri Open, but that another candidate could be nominated and approved for 2007 following the standard procedure. If a 2007 addition to the Hall of Fame was approved the presentation would also be made at the 2007 Open. It was proposed that in view of Steinmeyer's exceptional achievements in chess that the 2007 Open would be titled the Robert Steinmeyer Missouri Open Championship.

MCA Goals:

An extended discussion of Wayne Bartlett's proposed possible goals for the MCA resulted in agreement on the following goals:

- Increase MCA membership. In discussion it was proposed that this be made specific by specifying that membership should be returned to the level of 250 members within the coming year.
- All past MCA Bulletins should be posted on the MCA Web site. In discussion, Ken Fee stated that he had Bulletins going back to 1973. He will coordinate with Charlie Ward to achieve this goal; the time goal for this was not specified but it could be accomplished relatively soon.
- An MCA-sponsored tournament should be held in each region of Missouri during the coming year. It was agreed that a "region" did not necessarily mean one of the three MCA organizational regions. Cape Girardeau and Springfield were mentioned as areas that had been underserved in recent years.
- The MCA should be managed using an annual budget vs. expense report. Bill Wright will be presenting such a report at the February meeting.
- The MCA will take the lead in having chess certified as an official Missouri State High School Association Activity. This could be made official by September 2008. As the first step, Ken Fee and Ed Baur will work together to create a proposal to be presented to the MSHAA during this school year.

The meeting was adjourned at 4:05 pm.

Respectfully submitted,
Charles Ward, Secretary



PIC PRODUCTS

Personalized, Individualized, Customized Products

Have us make a personalized shirt with your picture, your name, your favorite chess score or position, you name it!

1 or 100 shirts

Order for yourself or to surprise a friend

TDs - order commemorative shirts for your tournaments

Coaches - order for your team or camp

see us at www.picproducts.net

(314) 908-1181



REGIONAL CHESS CLUBS

Kansas City Area Clubs

E-mail Kfee@kc.rr.com with changes

The Chess Club. Location: Vivion West Shopping Center (North KC) 2314 NW Vivion, Riverside MO 64150. Meets Wed. Fri. Sat, 6:00 to 12:00 PM Single visit \$5, Contact: Kenneth Fee (816) 835-7529 or chessclub@powerpawn.net. Club Web site: www.powerpawn.net

Westport Chess Club. Location: (On the Plaza) Uno's Chicago Grill at 4710 Jefferson Street, Kansas City, MO 64112 on a year-round basis. Tuesday's 6:30 to 11:00 PM \$2 fee adults, \$1 under 18 Contact: Bill Mendus wmendus@swbell.net

Rockhurst Community Chess Club. Location: Rockhurst University Community Center, 5401 Troost Ave., Kansas City MO 64110 Saturdays 10:00am to 1:00pm Contact: Alicia Douglas (816) 501-4306

Kansas City (KS) Public Library. Location: 625 Minnesota, Kansas City KS Meets: Wednesdays 5:30 to 8:00 PM Contact: Brooke Leavitt (913) 551-3280

ST. LOUIS AREA CLUBS

St. Louis Chess Club. Location: St. Louis Bread Company 6630 Delmar Ave. (U-City) Chess played every night 6-9pm Most players come on weekends Contact: Joseph Garnier at chessoholic@sbcglobal.net

Mid Rivers Mall Chess Club. Location: Food Court, Mid Rivers Mall, Mid Rivers Mall Drive, St. Peters. Chess played every Saturday, 8am-noon. Contact: e-mail Luke Brodlund at kalomundi_00@yahoo.com

St Peters Chess Club. Location: St. Peters Mathnasium. 235 Salt Lick Road, St. Peters
Meets: every Friday night starting at 6pm. Contact: e-mail Tim Nesham at tim.nesham@gm.com

Soulard Chess Club. Location: Nadine's in Soulard, 1931 S. 12th St. (314) 436-3045 Meets: Tuesdays 6:30 Contact: Jeff Vollmer at jrvollm@sbcglobal.net

Indian Trails Branch Library. Location: St. Louis County Library 8400 Delport Drive (314) 428-5424 Meets Tuesdays 3:30 PM. Contact: any library employee Library information and map.

CLUBS IN OTHER AREAS OF MISSOURI

Mineral Area Chess Club. Location: Monday Nights from 7 to 9 p.m. at the Tourist Center on the Mineral Area College Campus in Park Hills. Contact Stan Jackson, 573 358-1996, or James Lyon, 573 756-6009, or by e-mail at jaaalyon@sbcglobal.net

Columbia -- Univ. of Missouri Chess Club. Location: Memorial Union (518 Hitt Street) Room S203 May-August: Lakota's Coffee, 24 S. Ninth St. Mondays 7 to 10 PM Contact: C. Ward at czar8196@tranquility.net Website: www.students.missouri.edu/~muchess

Jefferson City -- Jefferson City Chess Club. Location: Thomas Jefferson Middle School, Room 800 1201 Fairgrounds Rd, Jefferson City, MO Meets: Wednesdays 7 to 9pm Contacts: E-mail Bob Howe at bdhowe@yahoo.com or Thomas Rehmeier at jjchess89@yahoo.com or Cell Phone: 573-291-0852. Club Website: <http://www.chess.jpkoonce.net>

Springfield - MO State Univ. Chess Club. Location: Plaster Student Union, room 317-A. Meeting hours: Mondays 7-10pm Contact: Nick Beatty at Nbeatty@missouristate.edu Club Website: www.organizations.missouristate.edu/chess

Rolla -- UMR Chess Club. Location: Burgess Room - 2nd floor Havener Center. Meets: Tuesdays 6PM Student President: Alex Marler Contact/Info: e-mail Selden Trimble at strimble@rollanet.org

Springfield -- Springfield Chess Club. Location: Southside Senior Center 2215 S. Fremont Ave., Springfield, MO Meets: Friday 6:30 to 11PM USCF-rated events. Contact: Jim Baumlin (417) 831-6585 Website: www.geocities.com/SpringfieldChessClub

MISSOURI TOURNAMENT LIFE

Visit the official Missouri Tournament Clearinghouse
Website for future events (<http://www.wayde.com/>)

October 21 -- \$5 Play for Rating Open -- North KC

Where: The Chess Club at Vivion West Shopping Mall (North Kansas City), 2314 NW Vivion Rd., Riverside MO 64150. **Registration:** 9:30 - 10:00 AM Round One 10AM **Rounds:** Three Rounds Game 90 (Everyone plays in one section) **Entry Fee:** \$5.00 per player (Pre-registered by October 18th (Online or mail) \$10.00 (On Site.) **Entries:** Mail entries to Wayne Bartlett, P.O. Box 417, Oak Grove, MO 64075. **PAYPAL** to chessclub@powerpawn.net **Prizes:** **Play for rating only!!** **Byes:** One half- point bye available for any round, maximum one, must commit before tournament. **Membership:** USCF and MCA membership is required and available in advance or at the tournament. **Information:** For further information, call Wayne at (816)-650-3366. The Chess Club phone: 816-505-1615

October 28-29 -- Jefferson City Open -- Jefferson City

5SS, G120. Thomas Jefferson Middle School., 1201 Fairgrounds Rd., Jefferson City, MO. Prizes b/40: \$250-1st overall, Class Prizes \$120 1st-Each (1800+, B, C, D, U1200) **Registration:** 8:30-9:30 a.m., **Rounds:** Sat. 10:00, 2:30, 7:00, Sun. 9:30, 2:00. **Entry fee:** \$30 if postmarked by 10/21, \$35 at site. Site entries cash only. Max one 1/2-point bye if declared by round 1. MCA membership required for MO residents, available at site from \$5. Wheelchair accessible. Click for map and directions. **Entries/Info:** Thomas Rehmeier , 5217 Denice Street, Jefferson City, MO 65109. Parking for Round 1 will be crowded due to ACT testing in the building, which will be completed by noon on Saturday.

November 4 -- Swiss August 1 -- Maryland Heights (St. Louis area)

4SS; G/60, G/75, G/90, G/105; Hampton Inn Westport, 2454 Old Dorsett Rd, Maryland Heights, MO 63043. EF \$35; \$200 1st; \$120 2nd; \$120 1st A, B, C, D, U1200/unr, b/40; Site entries cash only. Reg. 8:15-9:15; Rds: 9:30, 12, 2:30, 6. USCF; One ½ pt. bye maximum - commit before round 1; 314-497-4971 or AL_Howlett@charter.net

November 18 -- \$5 Play for Rating Open -- North KC

Where: The Chess Club at Vivion West Shopping Mall (North Kansas City), 2314 NW Vivion Rd., Riverside MO 64150. **Registration:** 9:30 - 10:00 AM Round One 10AM **Rounds:** Three Rounds Game 90 (Everyone plays in one section) **Entry Fee:** \$5.00 per player (Pre-registered by November 15th (Online or mail) \$10.00 (On Site.) **Entries:** Mail entries to Wayne Bartlett, P.O. Box 417, Oak Grove, MO 64075. **PAYPAL** to chessclub@powerpawn.net **Prizes:** Play for rating only!! **Byes:** One half- point bye available for any round, maximum one, must commit before tournament. **Membership:** USCF and MCA membership is required and available in advance or at the tournament. **Information:** For further information, call Wayne at (816)-650-3366. The Chess Club phone: 816-505-1615

December 2 -- Swiss Point 1 -- Maryland Heights (St. Louis area)

3SS G105; Hampton Inn Westport, 2454 Old Dorsett Rd, Maryland Hgts, MO 63043; **4 Sections:** M/X/A; 1500-1799; 1200-1499; U1200/unr; \$35 EF; \$180 prize for 3 points and \$90 prize for 2.5 points, b/8 in each section; Site entries cash only; Reg: 8:45-9:45; Rds: 10-2-6; No ½ pt byes; USCF; 314-497-4971 or AL_Howlett@Charter.net

December 30 -- Christmas Tree Open -- North KC

\$600 Prizes Guaranteed **Where:** The Chess Club at Vivion West Shopping Mall (North Kansas City), 2314 NW Vivion Rd., Riverside MO 64150. **Registration:** 9:30 - 10:00 AM Round One 10AM **Sections:** Open and U1600 (anyone can play in the Open section!) **Rounds:** Three Rounds Game 90 **Entry Fee:** \$35.00 per player (Pre-registered by December 28th (Online or mail) \$45.00 (On Site.)) **Entries:** Mail entries to Wayne Bartlett, P.O. Box 417, Oak Grove, MO 64075. PAYPAL to chessclub@powerpawn.net **Prizes:** \$600 Open 1st \$200 U1850 \$100 Reserve 1st \$200 2nd \$100 **Byes:** One half- point bye available for any round, maximum one, must commit before tournament. **Membership:** USCF and MCA membership is required and available in advance or at the tournament. **Information:** For further information, call Wayne at (816)-650-3366. The Chess Club phone: 816-505-1615.

For tournament dates further in the future, visit the Missouri Tournament Clearinghouse at www.mochess.org. The schedule for upcoming scholastic tournaments is located at the Missouri Scholastic Chess Clearinghouse at www.gatewaychess.org and kcchess.org.

Most Times Winning the Missouri State Title:

● Michael Brooks	12
● John Ragan	12
● Ken Jones	8
● Ron Luther	7
● Robert Steinmeyer	5
● Elliot Winslow	5
● Doug Eckert	5
● Robert Jacobs	5
● Bob Holliman	4
● Jim Voelker	4
● Aaron Dubin	3
● Jim Ellis	3
● Jim McLaughlin	3
● Leroy Muhammed	3



—Information taken from www.jimvoelker.com.

Christmas Tree Open

\$600 Prizes Guaranteed

Where: The Chess Club at Vivion West Shopping Mall (North Kansas City),
2314 NW Vivion Rd., Riverside MO 64150. [Click here for driving directions.](#)

Date: December 30th, 2006

Registration: 9:30 - 10:00 AM Round One 10AM

Sections: Open and U1600 (anyone can play in the Open section!)

Rounds: Three Rounds Game 90

Entry Fee: \$35.00 per player (Pre-registered by December 28th (Online or mail) \$45.00 (On Site.))

Entries: Mail entries to Wayne Bartlett, P.O. Box 417, Oak Grove, MO 64075. PAYPAL to
chessclub@powerpawn.net

Prizes: \$600 Open 1st \$200 U1850 \$100 Reserve 1st \$200 2nd \$100

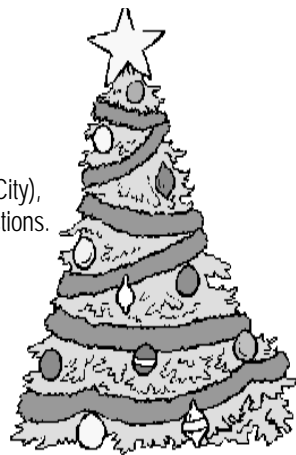
Byes: One half- point bye available for any round, maximum one, must commit before tournament.

Membership: USCF and MCA membership is required and available in advance or at the tournament.

Information: For further information, call Wayne at (816)-650-3366. The Chess Club phone: 816-505-1615

Chess Equipment, Books, and Videos for sale onsite!

Go to <http://www.powerpawn.net/> for all your chess needs!



Return Address
The Chess Club
2314 NW Vivion Road
Riverside MO 64150-9424