

# **MISSOURI CHESS BULLETIN**

**FALL, 2005**

## **JOSEPH GARNIER**

**2005 HIGH SCHOOL TOURNAMENT OF STATE CHAMPIONS REPRESENTATIVE**



**MISSOURI CHESS ASSOCIATION  
7138 LINDENWOOD  
SAINT LOUIS, MISSOURI – 63109**

**The MISSOURI CHESS BULLETIN is the official publication of the MISSOURI CHESS ASSOCIATION, a UNITED STATES CHESS FEDERATION AFFILIATE and a not for profit organization.**

## **MEMBERSHIP AND SUBSCRIPTIONS**

The MISSOURI CHESS BULLETIN is the official publication of the Missouri Chess Association. MISSOURI CHESS ASSOCIATION MEMBERSHIP includes a subscription to the MISSOURI CHESS BULLETIN.

### **ANNUAL MEMBERSHIP**

**REGULAR MEMBERSHIP – \$10**

**E-MAIL MEMBERSHIP – \$5**

**(e-mail access to MISSOURI CHESS BULLETIN)**

**SCHOLASTIC MEMBERSHIP – \$5**

**AFFILIATE MEMBERSHIP – \$9**

**PATRON MEMBERSHIP – \$25**

**MEMBERSHIP APPLICATIONS – Charles Ward, 2400 Cimarron, Columbia, Missouri - 65203**

## **ADVERTISING RATES**

**FULL PAGE – \$50(AFFILIATES – \$40)**

**HALF PAGE – \$40(AFFILIATES – \$32)**

**QUARTER PAGE – \$25(AFFILIATES – \$20)**

**FREE FULL PAGE ADVERTISEMENTS FOR TOURNAMENTS REQUIRING MISSOURI CHESS ASSOCIATION MEMBERSHIP**

## CONTENTS

BOARD OF DIRECTORS – PAGE 2
THIS BULLETIN – PAGE 2
SUMMER BOARD OF DIRECTORS MEETING – PAGE 3
FALL BOARD OF DIRECTORS MEETING – PAGE 4
JOSEPH GARNIER – PAGE 4
MAURICE ASHLEY SIMULTANEOUS – PAGE 4
BOARD OF DIRECTORS ELECTION – PAGE 5
KEN FEE NEW BULLETIN EDITOR 5
TOURNAMENT SCHEDULE – PAGE 6
MISSOURI OPEN GAMES – PAGE 7
LOAL DAVIS – PAGE 8
MISSOURI SCHOLASTIC CHAMPIONSHIP – PAGE 10
2005 SAINT LOUIS OPEN – PAGE 23
2005 MISSOURI CLASS CHAMPIONSHIP – PAGE 25
2005 MISSOURI OPEN – PAGE 27

## BOARD OF DIRECTORS

### REGION 1 – SAINT LOUIS AREA

Edward Baur – 7138 Lindenwood, Saint Louis, Missouri, 63109  
Aaron Dubin – 702 Stiffel Ridge, Chesterfield, Missouri, 63017  
William Wright – 449 West Jefferson, Apartment B – Saint Louis, Missouri, 63122

### REGION 2 – KANSAS CITY AREA

Wayne Bartlett – PO Box 4Box 417 – Oak Grove, Missouri, 64075  
Bob Holliman – PO Box 1871 – Independence, Missouri, 64055  
Kenneth Fee – 1537 Baker – Liberty, Missouri, 64068

### REGION 3 – REMAINDER OF STATE

Milton Garber – 3131 Williamsburg Way – Jefferson City, Missouri, 65109  
Selden Trimble – 11830 Highway BB – Rolla, Missouri, 65401  
Charles Ward – 2400 Cimarron – Columbia, Missouri, 65203

## THIS BULLETIN

Sincere thanks to Tony Rich for his efforts as bulletin editor. There have been recent problems with the publication of the Missouri Chess Bulletin. At the Summer board of directors meeting Ed Baur volunteered to be acting bulletin editor. At the Fall board of directors meeting, the board agreed to combine the Spring 2005, Summer 2005 and Fall 2005 editions into one edition with Ed Baur as the editor, and to appoint Ken Fee as the new bulletin editor. This bulletin contains items that should have appeared in the three editions. These items include results for the Missouri Scholastic Championship Tournament, the Saint Louis Open Tournament, the Missouri Class Championship Tournament, and the Missouri Open Tournament, and reports on the board of directors election and the Summer 2005 and Fall 2005 board of directors meetings.

## SUMMER 2005 BOARD OF DIRECTORS MEETING

The Board of Director met Sunday, July 17. Ed Baur, Bill Wright, Milton Garber, Charles Ward, Wayne Bartlett, Selden Trimble and Ken Fee were present, and Loal Davis and Bob Holliman were absent. The board scheduled the Fall meeting for Sunday, October 2. The Board approved the Spring meeting minutes. Treasurer Bill Wright reported that the June 30 bank balance was \$3,487.25. Membership coordinator Charles Ward reported 234 Missouri Chess Association members.

The board approved this tournament schedule. The 2005 Missouri Open Tournament is scheduled for September 18 and September 19 at the Days Inn in Saint Louis. The Missouri Scholastic Grade Championship Tournament is scheduled for November 5 at the Holiday Inn in Columbia. The Missouri Action Tournament is scheduled for November 5 at the Holiday Inn in Columbia. The 2006 Missouri Scholastic Championship Tournament is scheduled for February 25, 2006 and March 4, 2006 at Lewis and Clark Middle School in Jefferson City. The 2006 Missouri Class Championship Tournament is scheduled for June 11 and June 12 at the University of Missouri in Columbia. The 2006 Missouri Open Tournament is scheduled to be played at the Chess Club in Kansas City.

Sincere thanks to Jim Davies for acting as election commissioner. The 2005 board of directors election approved the board of directors election results. Wayne Bartlett, Ed Baur, Aaron Dubin, Ken Fee, Milton Garber, Bob Holliman, Selden Trimble, Charles Ward and Bill Wright were elected for a one year term.

The board decided that a playoff to name candidates for the 2006 Denker Tournament of State Champions and the 2006 Polgar Tournament of State Champions will be incorporated into the 2006 Missouri Scholastic Championship.

The board appointed Ed Baur as the acting bulletin editor.

The board discussed changing the length of directors terms to two years; no decision was made. The board discussed increasing membership dues; no decision was made. the board discussed the frequency of meetings; no decision was made. The board discussed the electronic meetings; no decision was made.

Bill Wright reported that Grandmaster Maurice Ashley gave a lecture and simultaneous exhibition in Saint Louis.

Bill Wright requested permission to spend \$100 for chess sets and mats for Veterans Hospitals. The board approved the request.

## FALL 2005 BOARD OF DIRECTORS MEETING

The Board of Directors met Sunday, October 2. Ed Baur, Bill Wright, Milton Garber, Charles Ward, Wayne Bartlett, Selden Trimble, Ken Fee, Bob Holli9man and Aaron Dubin were present. No members were absent. The Board scheduled the Winter meeting for Sunday, January 8 with Sunday, January 22 as the alternate date in case of inclement weather. The Board approved the Summer meeting minutes with one amendment. Treasurer Bill Wright reported a balance of \$3011.29. Membership coordinator Charles Ward reported 231 Missouri Chess Association members.

The Board elected officers. Ed Baur was elected president, Selden Trimble was elected vice president, Bill Wright was elected treasurer, and Ken Fee was elected secretary.

The board discussed the tournament schedule. The 2006 Missouri Open Tournament is scheduled for September 16 and September 17 in Kansas City. A date and place for the 2006 Saint Louis Open Tournament is not finalized. The 2006 Missouri Class tournament is scheduled for June 10 and June 11 in Columbia. The 2006 Kansas City Open is scheduled for February 18, February 19 and February 20 in Kansas City.

The board decided to meet in January, April and October in 2006.

The board decided to not change membership dues.

Bill Wright reported that veterans organizations did not need chess equipment at this time.

## JOSEPH GARNIER

Joseph Garnier, pictured on the front cover, recently played excellent chess. He placed second on board one on tie breakers with a 4-0-0 record in the Missouri Scholastic Championship Tournament on February 26. One week later he earned the right to represent Missouri in the Denker Tournament of State High School Champions with a 3-0-0 record in the Denker Tournament of Champions Playoff. Joseph tied for third in the Saint Louis Open with a 4-1-0 record. Joseph scored 3 wins and 3 losses in the Denker Tournament of High School Champions. Joseph was the only winner against Grandmaster Maurice Ashley in a twenty-five board simultaneous exhibition in Saint Louis. Playing with rating of 1765, Joseph tied for eighth in the Missouri Open Tournament with a 3-1-1 record.

## MAURICE ASHLEY LECTURE AND SIMULTANEOUS

Last summer Grandmaster Maurice Ashley gave a lecture and played a simultaneous exhibition in Kirkwood. A group of enthusiastic chess players attended the lecture. Twenty-five local players challenged the grandmaster in the simultaneous exhibition. Joseph Garnier was the only player to defeat Ashley.

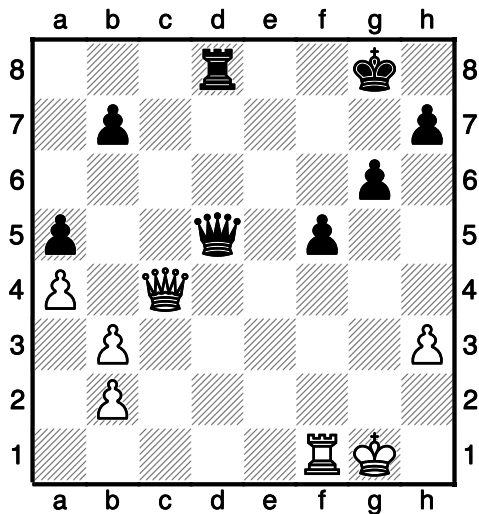
## BOARD OF DIRECTORS ELECTION

Sincere thanks to Jim Davies for acting as election commissioner. Ed Baur, Aaron Dubin and Bill Wright were elected to represent region one, the Saint Louis area. Milton Garber, Selden Trimble and Charles Ward were elected to represent region two, the central part of the state. Ken Fee, Bob Holliman and Wayne Bartlett were elected to represent region three, the Kansas City area.

## KEN FEE NEW BULLETIN EDITOR

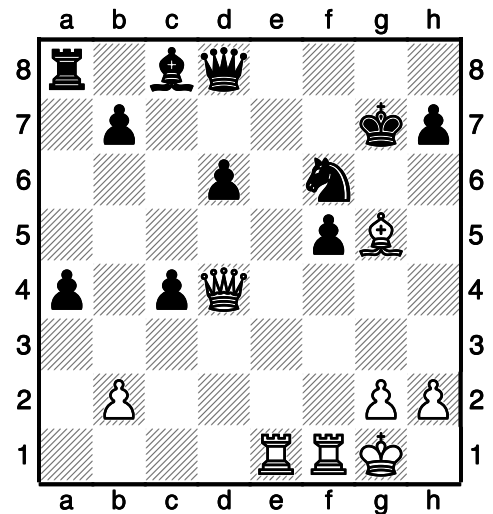
Ken Fee is the new bulletin editor. He will be responsible for the Winter 2006, due in February, 2006, and subsequent bulletins. He needs pertinent information. Pertinent information includes, but is not limited to, tournament reports, including crosstables, section winners, prize information and games, chess club information, chess club activities information, tournament schedules and digital pictures. Information should be sent to Ken Fee, 1537 Baker, Liberty, Missouri, 64068. His telephone number is 816-407-7017, and his e-mail address is KFEE@kc.rr.com.

### WHITE TO MOVE



1W-Rd1, 1B-Qxc4, 2W-Rxd8+, 2B-Kg7,  
3W-bxc4!

### WHITE TO MOVE



1W-Re8, 1B-Qxe8, 2W-Qxf6+, 2B-Kg8, 3W-Bh6,  
3B-Qf7, 4W-Qd8+, 4B-Qf8, 5W-Qxf8++

## TOURNAMENT SCHEDULE

DATE	TOURNAMENT	SITE	CONTACT
November 17, 2005	Gateway Chess League (Scholastic)	O'Fallon High School, O'Fallon, Illinois	gatewaychess.org
December 3, 2005	Gateway Chess League Board(Scholastic)	Chaminade High School, Saint Louis, Missouri	gatewaychess.org
December 10, 2005	FloriSwiss 12	Florissant Church of Christ, Florissant, Missouri	Al Howlett, 314-497-4971
January 7, 2006	Gateway Chess League Team(Scholastic)	Belleville East High School, Belleville, Illinois	gatewaychess.org
January 14 to January 16, 2006	New Years Open	The Chess Club, Kansas City, Missouri	Ken Fee, 816-407-7017
January 14 to January 16, 2006	Kansas City Masters	The Chess Club, Kansas City, Missouri	Ken Fee, 816-407-7017
January 21, 2006	Gateway Chess League Class(Scholastic)	Lindberg High School, Saint Louis, Missouri	gatewaychess.org
February 4, 2006	Gateway Chess League Action(Scholastic)	Westminster Christian Academy, Saint Louis, Missouri	gatewaychess.org
February 18	Winter Blahs	University of Missouri, Columbia, Missouri	Charles Ward 573-443-6685
February 18 to February 20	Kansas City Open	Kansas City, Missouri	Ken Fee, 816-407-7017
February 25 and March 4, 2006	Missouri Scholastic Championship (Scholastic)	Lewis and Clark Middle School, Jefferson City, Missouri	gatewaychess.org
March 4, 2006	SWISSZILLA	Westport Hampton Inn, Saint Louis, Missouri	Al Howlett, 314-497-4971
March 18, 2006	Bollinger Memorial Grade(Scholastic)	Wydown Middle School, Saint Louis, Missouri	gatewaychess.org
April 1, 2006	Missouri Quads	University of Missouri, Columbia, Missouri	Charles Ward 573-443-6685
April 8, 2006	FloriSwiss 13	Florissant Church of Christ, Florissant, Missouri	Al Howlett, 314-497-4971
April 29, April 30, 2006	Chess Club Championship V	The Chess Club, Kansas City, Missouri	Ken Fee, 816-407-7017



MISSOURI OPEN GAMES

LOAL DAVID – JOSEPH GARNIER

1W-e4, 1B-e5, 2W-Nf3, 2B-Nc6, 3W-Bc4, 3B-Nf6, 4W-Ng5, 4B-Bc5, 5W-Bxf7+, 5B-Ke7, 6W-Bd5, 6B-Nxd5, 7W-exd5, 7B-Nb4, 8W-Ne4, 8B-d6, 9W-d4, 9B-Nxd5, 10W-dxc5, 10B-Nf6, 11W-cxd6+, 11B-cxd6, 12W-b1Nc3, 12B-Be6, 13W-OO, 13B-d5, 14W-Nxf6, 14B-gxf6, 15W-f4, 15B-Qb6+, 16W-Kh1, 16B-d4, 17W-fxe5, 17B-f5, 18W-Ne2, 18B-Bc4, 19W-Rxf5, 19B-Qg6, 20W-Nxd4, 20B-h8Rg8, 21W-Qf3, 21B-Ba6, 22W-Bg5+, 22B-resign

VAIRAM ARUNDALAM – JOE HOFFMANN

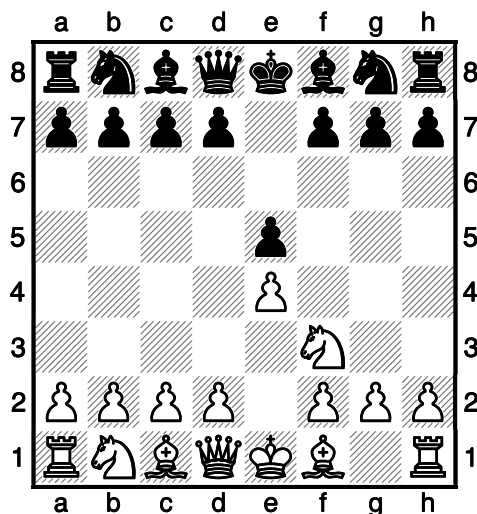
1W-e4, 1B-c5, 2W-Nf3, 2B-e6, 3W-d4, 3B-cxd4, 4W-Nxd4, 4B-a6, 5W-Nc3, 5B-Qc7, 6W-Bd3, 6B-Nc6, 7W-Nf3, 7B-b5, 8W-OO, 8B-d6, 9W-Re1, 9B-Nf6, 10W-Bf4, 10B-Ne5, 11W-Bxe5, 11B-dxe5, 12W-Ne2, 12B-Bb7, 13W-Ng3, 13B-Bc5, 14W-Qe2, 14B-OO, 15W-c3, 15B-a8Rd8, 16W-a1Rd1, 16B-Ng4, 17W-Ng5, 17B-Nxf2, 18W-Kf1, 18B-Nxd1, 19W-Rxd1, 19B-Ba7, 20W-Qh5, 20B-h6, 21W-Nh3, 21B-Qc5, 22W-Qg4, 22B-Qe3, 23W-Nh5, 23B-g6, 24W-Nf6+, 24B-Kg7, 25W-Nh5+, 25B-Kh8, 26W-Bc2, 26B-Rxd1+, 27W-Qxd1, 27B-gxh5, 28W-Qxh5, 28B-Rg8, 29W-Qxf7, 29B-Qc1+, 30W-Ke2, 30B-Qxc2+, 31W-Ke1, 31B-Qc1+, 32W-Ke2, 32B-Rxg2+, 33W-Kf3, 33B-Qf1+, 34W-Nf2, 34B-Qxf2++

GABRIEL BOYD – BRADLEY HERBST

1W-e4, 1B-g6, 2W-d4, 2B-Bg7, 3W-Bf4, 3B-Nc6, 4W-e5, 4B-d6, 5W-Qd2, 5B-dxe5, 6W-Bg3, 6B-Nxd4, 7W-c3, 7B-Nf5, 8W-Qxd8+, 8B-Kxd8, 9W-Nd2, 9B-Nxg3, 10W-fxg3, 10B-c5, 11W-Bc4, 11B-e6, 12W-g1Nf3, 12B-Bd7, 13W-OO, 13B-b5, 14W-Bd3, 14B-Bc6, 15W-f1Re1, 15B-c4, 16W-Bc2, 16B-f6, 17W-a1Rd1, 17B-Kc7, 18W-Ne4, 18B-Ne7, 19W-Nc5, 19B-Bd5, 20W-Be4, 20B-Kc6, 21W-Nxe6, 21B-Bxe4, 22B-Rxe4, 22B-Bh6, 23W-g4, 23B-Nd5, 24W-g5, 24B-h1Re1, 25W-gxh6, 25B-Rxe6, 26W-Nd4+, 26B-exd4, 27W-Rxe6+, 27B-Kd7, 28W-Ra6, 28B-d3, 29W-Rd2, 29B-Nb6, 30W-b3, 30B-Kc6, 31W-bxc4, 31B-bxc4, 32W-Rb2, 32W-Rd8, 33W-Rd2, 33B-Rd7, 34W-Ra5, 34B-Nd5, 35W-Ra6+, 35B-Kb5, 36W-Ra3, 36B-a5, 37W-Kf1, 37B-Ne3, 38W-Kf2, 38B-Nc2, 39W-Rb3+, 39B-cxb3, 40W-axb3, 40B-Na1, 41W-Ke3, 41B-Nxb3, 42W-Rxd3, 42B-Rxd3+, 43W-Kxd3, 43B-a4, 44W-Kc2, 44B-Kc4, 45W-Kb2, 45B-Nc5, 46W-g3, 46B-Ne4, 47W-Ka3, 47B-Nxc3, 48W-Kb2, 48B-Kb4, 49W-Ka1, 49B-Kb3, 50W-h3, 50B-a3, 51W-h4, 53B-a2, 52W-g4, 52B-Nd5, 53W-h5, 53B-Ne3, 54W-hxg6, 54B-Nb2++

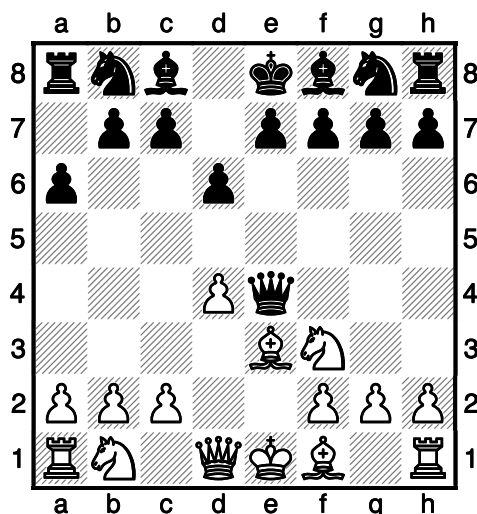
NATIONAL MASTER LOAL DAVIS  
DAMIANO'S DEFENSE

DIAGRAM 1



I find it interesting that In this position WHITE does not threaten to win a pawn. If BLACK plays the pointless move 2B-a6, the game can continue with 3W-Nxe5, 3B-Qe7, 4W-d4, 4B-d6, 5W-Nf3, 5B-Qe4+, BLACK wins the pawn back, and WHITE continues with 6W-Be3.

DIAGRAM 2



2W-Nf3 is not pointless because WHITE can gain time by attacking the BLACK queen with either 7W-Nc3 or 7W-Bd3. This central control and lead in development gives WHITE a substantial plus. 2W-Nf3 threatened to threaten so strongly that BLACK must neutralize the threat.

WHITE(LOAL DAVIS – PASADENA HIGH) –  
BLACK(DAVID TALIFERO – SOUTH  
PASADENA HIGH) – 1968 – DAMIANO'S  
DEFENSE – [C40]

1W-e4,  
1B-e5  
2W-Nf3  
2B-f6

2B-f6 initiates Damiano's Defense. Damiano was an Italian author who lived around 1512. The defense stinks, but is worth knowing because you never know who may play it against you. I have met it only once in serious chess. Nevertheless I have applied the ideas behind studying this game many times. They spring up in both King Pawn and Queen Pawn openings.

3W-Nxe5

Both 3W-Bc4 and 3W-d4 are strong moves, because they further development while either restricting or attacking BLACK. 3W-Nxe5 is the strongest move, and is a lot of fun.

3B-fxe5

BLACK can regain the pawn with 3B-Qe7 4W-Nf3(4W-Qh5+, 4B-g6, 5W-Nxg6, 5B-Qxe4+ and BLACK wins the WHITE knight), 4B-Qxe4+, 5W-Be2, but BLACK is about to get hit.

4W-Qh5+  
4B-Ke7

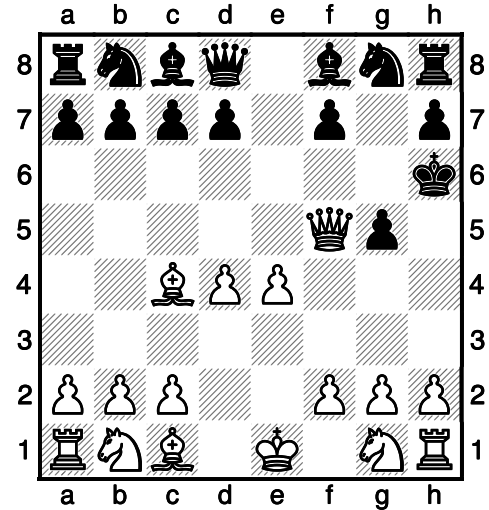
4B-g6 is a mistake because 5W-Qxe5+ and WHITE wins the rook in the corner pocket. After 5W-Qe5+ BLACK can offer resistance with 5B-Qe7, 6W-Qxh8, 6B-Qxe4+, 7W-Kd1, 7B-d5, 8W-Bb5+(8W-Qxg8, 8B-Bg4+, 9W-f3, 9B-Bxf3+, 10W-gxf3, 10B-Qxf3+, 11W-Ke1(11W-Be2, 11B-Qxh1+, 12W-Bf1, 12B-Qxf1++)11B-Qxh1), 8B-Kd8, 9W-Re1, 9B-Bg4+, (9B-Qxg2, 10W-Re8++), 10W-f3, 10B-Bxf3+, 11W-gxf3, 11B-Qxf3+, 12W-Be2, and WHITE wins because BLACK is down a rook and must protect the g8-knight.

5W-Qxe5+  
5B-Kf7  
6W-Bc4+  
6B-Kg6

6B-d5 is better but insufficient: 7W-Bxd5+, 7B-Kg6, 8W-h4, 8B-h6, 9W-Bxb7, 9B-Bd6 (9B-Bxb7, 10W-Qf5++), 10W-Qa5 and WHITE is crushing because BLACK cannot prevent 11W-Bxa8.

7W-Qf5+  
7B-Kh6  
8W-d4+  
8B-g5

DIAGRAM 3



9W-h4

The BLACK g5-pawn is pinned and the BLACK king is in the crossfire of the c1-bishop and the h1-rook.

9B-Be7

9B-Be7 prevents 10W-Bxg5+ forking the BLACK king the queen

10W-hxg5+  
10B-Kg7  
11W-Qf7++

# 2005 MISSOURI SCHOLASTIC CHAMPIONSHIP TOURNAMENT

SATURDAY, FEBRUARY 26, 2005 AND SATURDAY, MARCH 5, 2005

## LEWIS AND CLARK MIDDLE SCHOOL

### HIGH SCHOOL TEAM STANDINGS

	SCHOOL	CODE	LOCATION	SCORE
1	ROCKHURST HIGH	RKSTH	KANSAS CITY, MISSOURI	13.5
2	CROSSROADS HIGH	CRDSH	SAINT LOUIS, MISSOURI	13.0
3	WESTMINSTER CHRISTIAN HIGH	WECRH	SAINT LOUIS, MISSOURI	12.5
4	VIANNEY HIGH	VIANH	SAINT LOUIS, MISSOURI	12.5
5	JEFFERSON CITY HIGH	JFFCH	JEFFERSON CITY, MISSOURI	12.0
6	PARKWAY SOUTH HIGH	PWSOH	SAINT LOUIS, MISSOURI	12.0
7	LINDBERGH HIGH	LINDH	SAINT LOUIS, MISSOURI	12.0
8	CLAYTON HIGH	CLAYH	SAINT LOUIS, MISSOURI	10.5
9	WILLIAM CHRISMAN HIGH	WMCHH	INDEPENDENCE, MISSOURI	10.5
10	TRUMAN HIGH	TRUMH	INDEPENDENCE, MISSOURI	10.0
11	WEST PLAINS HIGH	WEPH	WEST PLAINS, MISSOURI	9.0
12	HELIAH HIGH	HLASH	JEFFERSON CITY, MISSOURI	9.0
13	VALLEY PARK HIGH	VYPKH	VALLEY PARK, MISSOURI	9.0
14	LAQUEY HIGH	LAQYH	LAQUEY, MISSOURI	9.0
15	SPRINGFIELD CENTRAL HIGH	SPCEH	SPRINGFIELD, MISSOURI	8.5
16	CHAMINADE HIGH	CHAMH	SAINT LOUIS, MISSOURI	8.0
17	LIBERTY FAITH CHRISTIAN HIGH	LFCRH	NORWOOD, MISSOURI	7.5
18	CALIFORNIA HIGH	CNIAH	CALIFORNIA, MISSOURI	7.0
19	OWENSVILLE HIGH	OWENH	OWENSVILLE, MISSOURI	6.5
20	PURDY HIGH	PRDYH	PURDY, MISSOURI	6.0
21	LAWSON HIGH	LSONH	LAWSON, MISSOURI	6.0
22	HERMANN HIGH	HERMH	HERMANN, MISSOURI	6.0
23	AVA HIGH	AVAMH	AVA, MISSOURI	6.0
24	WASHINGTON HIGH	WASHH	WASHINGTON, MISSOURI	6.0
25	SAINT LOUIS METRO HIGH	SLMOH	SAINT LOUIS, MISSOURI	5.0
26	FRANCIS HOWELL HIGH	FHOWH	SAINT CHARLES, MISSOURI	4.0
27	UNIVERSITY CITY HIGH	UTYCH	SAINT LOUIS, MISSOURI	4.0
28	CONSTRUCTION CAREERS HIGH	CONCH	SAINT LOUIS, MISSOURI	4.0
29	HARRISBURG HIGH	HSBGH	HARRISBURG, MISSOURI	3.5
30	CASS MIDWAY HIGH	CMIDH	HARRISONVILLE, MISSOURI	3.0
31	SCHOOL OF THE OSAGE HIGH	SOSAH	LAKE OZARK, MISSOURI	3.0
32	SAINT CHARLES HIGH	SCHSH	SAINT CHARLES, MISSOURI	3.0
33	PARKWAY NORTH HIGH	PWNOH	SAINT LOUIS, MISSOURI	2.0
34	BOLIVAR HIGH	BVARH	BOLIVAR, MISSOURI	1.5
35	WHEATLAND HIGH	WLNDH	WHEATLAND, MISSOURI	1.0
36	BERKELEY HIGH	BERKH	SAINT LOUIS, MISSOURI	1.0

### NINTH GRADE AND UNDER TEAM STANDINGS

	SCHOOL	CODE	LOCATION	SCORE
1	VIANNEY HIGH	VIANH	SAINT LOUIS, MISSOURI	17.0
2	CHAMINADE HIGH	CHAMH	SAINT LOUIS, MISSOURI	16.5
3	HELIAH HIGH	HLASH	JEFFERSON CITY HIGH	14.5
4	PARKWAY SOUTH HIGH	PWSOH	SAINT LOUIS, MISSOURI	13.5
5	TRUMAN HIGH	TRUMH	INDEPENDENCE, MISSOURI	12.0
6	LAQUEY HIGH	LAQYH	LAQUEY, MISSOURI	10.5
7	SPRINGFIELD CENTRAL HIGH	SPCEH	SPRINGFIELD, MISSOURI	9.5
8	FORT OSAGE HIGH	FTOSH	KANSAS CITY, MISSOURI	9.5
9	WILLIAM CHRISMAN HIGH	WMCHH	INDEPENDENCE, MISSOURI	7.5
10	BOURBON HIGH	BBONH	BOURBON HIGH	5.5
11	ROLLA HIGH	RLLAH	ROLLA, MISSOURI	4.5
12	FESTUS HIGH	FESTH	FESTUS, MISSOURI	4.0
13	CALIFORNIA HIGH	CNIAH	CALIFORNIA, MISSOURI	3.5
14	MARQUETTE HIGH	MARQH	SAINT LOUIS, MISSOURI	3.0
15	JEFFERSON CITY HIGH	JFFCH	JEFFERSON CITY, MISSOURI	2.0
16	WESTMINSTER CHRISTIAN HIGH	WECRH	SAINT LOUIS, MISSOURI	1.0

EIGHTH GRADE AND UNDER TEAM STANDINGS

	SCHOOL	CODE	LOCATION	SCORE
1	SPERRENG MIDDLE	SPNGM	SAINT LOUIS, MISSOURI	18.5
2	LAMAR MIDDLE	LMARM	LAMAR, MISSOURI	17.0
3	ALLEN VILLAGE MIDDLE	ALLVM	KANSAS CITY, MISSOURI	16.5
4	WESTMINSTER CHRISTIAN HIGH	WECRH	SAINT LOUIS, MISSOURI	16.5
5	OSAGE TRAILS MIDDELE	OSTRM	INDEPENDENCE, MISSOURI	16.5
6	WYDOWN MIDDLE	WYDNM	SAINT LOUIS, MISSOURI	15.5
7	PARKWAY CENTRAL MIDDLE	PYCEM	CHESTERFIELD, MISSOURI	15.5
8	MCKINLEY MIDDLE	MCKYM	SAINT LOUIS, MISSOURI	14.5
9	ST CATHERINE LABOURE MIDDLE	SCLAM	SAINT LOUIS, MISSOURI	14.5
10	CROSSROADS HIGH	CRDSH	SAINT LOUIS, MISSOURI	14.0
11	ST MICHAEL ARCHANGEL MIDDLE	SMAAM	SAINT LOUIS, MISSOURI	14.0
12	ST JAMES ST JAMES MJIDDLE	SJSIM	SAINT JAMES, MISSOURI	14.0
13	CARVER MJIDDLE	CARVM	SPRINGFIELD, MISSOURI	13.0
14	HALLSVILLE MIDDLE	HLLVM	HALLSVILLE, MISSOUJRI	13.0
15	WOOD MIDDLE	WOODM	FORT LEONARD WOOD, MO	12.0
16	SCHOOL OF THE OSAGE MIDDLE	SOSAM	LAKE OZARK, MISSOURI	11.5
17	LADUE MIDDLE	LDUEM	SAINT LOUIS, MISSOURI	11.5
18	WASHINGTON MIDDLE	WASHM	WASHINGTON, MISSOURI	11.0
19	BOURBON MIDDLE	BBONM	BOURBON, MISSOURI	10.0
20	BRIGER MIDDLE	BRGRM	INDEPENDENCE, MISSOURI	9.5
21	KNOB NOSTER MIDDLE	KNNRM	KNOB NOSTER, MISSOURI	9.0
22	SEYMOUR MIDDLE	SEYMM	SEYMOUR, MISSOURI	9.0
23	ROLLA MIDDLE	RLLAM	ROLLA, MISSOURI	9.0
24	FULTON MIDDLE	FTONM	FULTON, MISSOURI	6.5
25	MILLER COUNTY MIDDLE	MRCOM	TUSCUMBIA, MISSOURI	6.0
26	COLUMBIA JEFFERSON MIDDLE	COJNM	COLUMBIA, MISSOURI	6.0
27	GENTRY MIDDLE	GTRYM	COLUMBIA, MISSOURI	5.0
28	MARY INST COUNTRY DAY HIGH	MICDH	SAINT LOUIS, MISSOURI	5.0
29	JOHN BURROUGHS MIDDLE	JNBSh	SAINT LOUIS, MISSOURI	5.0
30	SAINT LOUIS PRIORY HIGH	SLPRM	SAINT LOUIS, MISSOURI	5.0
31	HAZELWOOD MIDDLE	HZWDM	HAZELWOOD, MISSOURI	4.5
32	FESTUS MIDDLE	FESTM	FESTUS, MISSOURI	4.5
33	PARKWAY SOUTH MIDDLE	PYSOM	SAINT LOUIS, MISSOURI	4.0
34	MARSHFIELD MIDDLE	MFLDM	MARSHFIELD, MISSOURI	3.0
35	BARSTOW MIDDEL	BTOWM	KANSAS CITY, MISSOURI	2.5
36	JAMESTOWN MIDDLE	JASTM	JAMESTOWN, MISSOURI	2.0
36	CAMPBELL MIDDLE	CBLLM	LEES SUMMIT, MISSOURI	2.0

SIXTH GRADE AND UNDER TEAM STANDINGS

	SCHOOL	CODE	LOCATION	SCORE
1	RICHARDSON ELEMENTARY	RSONE	LEES SUMMIT, MISSOURI	19.0
2	PARKWAY CENTRAL MIDDLE	PYCEM	CHESTERFIELD, MISSOURI	18.5
3	ALLEN VILLAGE MIDDLE	ALLVM	KANSAS CITY, MISSOURI	16.0
4	HOLY INFANT MIDDLE	FINFM	BALLWIN, MISSOURI	14.0
5	WYDOWN MIDDLE	WYDNM	SAINT LOUIS, MISSOURI	13.5
6	NEW CITY ELEMENTARY	NEWCM	SAINT LOUIS, MISSOURI	13.5
7	LADUE MIDDLE	LDUEM	SAINT LOUIS, MISSOURI	12.5
8	SEYMOUR MIDDLE	SEYMM	SEYMOUR, MISSOURI	11.5
9	LAQUEY MIDDLE	LAQYM	LAQUEY, MISSOURI	11.5
10	MCKINLEY MIDDLE	MCKYM	SAINT LOUIS, MISSOURI	10.5
11	ST MICHAEL ARCHANGEL MIDDLE	SMAAM	SAINT LOUIS, MISSOURI	10.0
12	JOHNSON WABASH ELEMENTARY	JOWAE	SAINT LOUIS, MISSOURI	9.5
13	WOOD MIDDLE	WOODM	FT LEONARD WOOD, MO	9.5
14	FAITH ASSEMBLY CHRISTIAN MID	FACRM	WEST PLAINS, MISSOURI	8.5
15	FULTON MIDDLE	FTONM	FULTON, MISSOURI	8.5
16	FIRE PRAIRIE MIDDLE	FIPRM	INDEPENDENCE, MISSOURI	5.5
17	GENTRY MIDDLE	GTRYM	COLUMBIA, MISSOURI	5.0
18	JAMESTOWN MIDDLE	JASTM	JAMESTOWN, MISSOURI	5.0
19	HARTVILLE MIDDLE	HRTVM	HARTVILLE, MISSOURI	4.0
20	WEST PLAINS MIDDLE	WPSM	WEST PLAINS, MISSOURI	4.0
21	PARKWAY WEST MIDDLE	PYWEM	CHESTERFIELD, MISSOURI	4.0
22	STEGE MIDDLE	STEGM	SAINT LOUIS, MISSOURI	4.0
23	KANSAS CITY LINCOLN MIDDLE	KCDNM	KANSAS CITY, MISSOURI	4.0
24	BARRINGTON ELEMENTARY	BTONE	SAINT LOUIS, MISSOURI	4.0
25	DENT PHELPS MIDDLE	DTPHM	SALEM, MISSOURI	3.0

26 MIRIAM MIDDLE MIRMM SAINT LOUIS, MISSOURI 1.5

FIFTH GRADE AND UNDER TEAM STANDINGS

	SCHOOL	CODE	LOCATION	SCORE
1	MT WASHINGTON ELEMENTARY	MTWAE	INDEPENDENCE, MISSOURI	18.5
2	BARSTOW MIDDLE	BTOWM	KANSAS CITH, MISSOURI	17.0
3	KENNARD ELEMENTARY	KNNDE	SAINT LOUIS, MISSOURI	17.0
4	SULLIVAN MIDDLE	SVANM	SULLIVAN, MISSOURI	15.0
5	SAINT RICHARD MIDDLE	SRRDM	SAINT LOUIS, MISSOURI	14.0
6	PEMBROKE HILL MIDDLE	PEMHM	KANSAS CITY, MISSOURI	14.0
7	FAITH ASSEMBLY CHRISTIAN MID	FACRM	WEST PLAINS, MISSOURI	14.0
8	ST CAHTERINE LABOURE MIDDLE	SCLAM	SAINT LOUIS, MISSOURI	13.5
9	SEYMOUR MIDDLE	SEYMM	SEYMOUR ELEMENTARY	12.0
10	J C SAINT JOSEPH MIDDLE	JCSJM	JEFFERSON CITY, MISSOURI	11.0
11	JOHNSON WABASH MIDDLE	JOWAE	SAINT LOUIS, MISSOURI	10.0
12	SHENANDOAH VALLEY MIDDLE	SHVYE	SAINT LOUIS, MISSOURI	10.0
13	MILLER COUNTY MIDDLE	MRCOM	TUSCUMBIA, MISSOURI	9.0
14	RICHARDSON ELEMENTARY	RSONE	LEES SUMMIT, MISSOURI	8.0
15	ROLLA MARK TWAIN ELEMEN	RMKTE	ROLLA, MISSOURI	8.0
16	J C IMMACULATE CONCEPTION M	JCICM	JEFFERSON CITY, MISSOURI	6.0
17	LAWSON ELEMENTARY	LSONE3	JEFFERSON CITY, MISSOURI	6.0
18	HALLSVILLE MIDDLE	HLLVM	HALLSVILLE, MISSOURI	5.0
19	CHRIST PRINCE OF PEACE MIDDLE	CPOPM	SAINT LOUIS, MISSOURI	5.0
20	PIERREMOINT ELEMENTARY	PMNTE	SAINT LOUIS, MISSOURI	5.0
21	ST LOUIS TRUMAN ELEMENTARY	SLTRE	SAINT LOUIS, MISSOURI	5.0
22	FORSYTH ELEMENTARY	FSTHE	SAINT LOUIS, MISSOURI	5.0
23	GREEN PINES ELEMENTARY	GNPSE	SAINT LOUIS, MISSOURI	5.0
24	HAGEMAN ELEMENTARY	HMANE	SAINT LOUIS, MISSOURI	5.0
25	CHESTERFIELD DAY ELEMENTARY	CFDDE	CHESTERFIELD, MISSOURI	5.0
26	CENTRAL CHRISTIAN ELEMEN	CECRE	SAINT LOUIS, MISSOURI	5.0
27	GREEN TRAILS ELEMENTARY	GNTSE	SAINT LOUIS, MISSOURI	4.0
28	MILL CREEK ELEMENTARY	MLLCE	COLUMBIA, MISSOURI	4.0
29	MASON RIDGE ELE;MENTARY	MSNR	SAINT LOUIS, MISSOURI	4.0
30	COLUMBIA CATHOLIC ELEMEN	COCAM	COLUMBIA, MISSOURI	4.0
31	CHESTERFIELD ELEMENTARY	CFLDE	CHESTERFIELD, MISSOURI	4.0
32	MULLANPHY ELEMENTARY	MPHYE	SAINT LOUIS, MISSOURI	4.0
33	SAPPINGTON ELEMENTARY	SAPPE	SAINT LOUIS, MISSOURI	4.0
34	SPOEDE ELEMENTARY	SPDEE	SAINT LOUIS, MISSOURI	3.5
35	WILLOW BROOK ELEMENTARY	WWBKE	SAINT LOUIS, MISSOURI	3.5
36	WOERTHER ELEMENTARY	WTHRE	BALLWIN, MISSOURI	3.5
37	RIDGE MEADOW ELEMENTARY	RMDWE	CHESTERFIELD, MISSOURI	3.5
38	RIDGEWAY MIDDLE	RWAYM	RIDGEWAY, MISSOURI	3.0
39	FIRE PRAIRIE MIDDLE	FIPRME	INDEPENDENCE, MISSOURI	3.0
40	ST LOUIS CATHEDRAL MIDDLE	CATHM	SAINT LOUIS, MISSOURI	2.5
41	JAMESTOWN MIDDLE	JASTM	JAMESTOWN, MISSOURI	2.5
42	ROSS ELEMENTARY	ROSSE	SAINT LOUIS, MISSOURI	2.0
43	OAK BROOK ELEMENTARY	OAKBE	BALLWIN, MISSOURI	1.0

HIGH SCHOOL BOARD I INDIVIDUAL STANDINGS

	NAME	TEAM	GR	ROUND	ROUND	ROUND	ROUND	SCORE
				1	2	3	4	
1	JEREMY VOLKMANN	FHOWH	12	W-36	W-9	W-6	W-5	4.0
2	JOSEPH GARNIER	UTYCH	12	W-24	W-7	W-21	W-4	4.0
3	BEN GOOLDSCHMIDT	HSBGH	12	W-41	D-8	W-11	W-14	3.5
4	TYLER SEVERENCE	JFFCH	10	W-29	W-12	W-25	L-2	3.0
5	TOM EPPLIN-ZAPF	SLMOH	12	W-37	W-10	W-18	L-1	3.0
6	ALEX MARLER	LINDH	12	W-26	W-15	L-1	W-23	3.0
7	CHRIS HASSETT	PWSOH	12	W-20	L-2	W-32	W-19	3.0
8	ELLIS SMITH	VYPKH	12	D-14	D-3	W-43	W-30	3.0
9	BEN RUSS	CRDSH	12	W-23	L-1	W-40	W-20	3.0
10	MICHAEL GASSER	SCHSH	12	W-17	L-5	W-45	W-18	3.0
11	STEVEN BINKLEY	WEPSh	9	W-42	W-27	L-3	W-24	3.0
12	BRAD HERBST	VIANH	11	W-19	L-4	W-42	W-25	3.0
13	GEORGE THAMPY	WECRH	12	W-27	L-21	W-46	W-22	3.0
14	PRASHU SRIPAL	CHAMH	11	D-8	W-35	W-38	L-3	2.5
15	JIM AN	CLAYH	10	W-28	L-6	D-16	W-38	2.5
16	ROBERT BANG	WMCHH	10	W-31	L-20	D-15	W-37	2.5
17	ADAM KOENIG	SPCEH	9	L-10	D-40	W-36	W-35	2.5

18	TERRANCE BALDWIN	WMCHH	9	W-33	W-26	L-5	L-10	2.0
19	SHAWN CHENEY	PREDYH	12	L-12	W-22	W-33	L-7	2.0
20	BEN SHULL	VI9ANH	10	L-7	W-16	W-47	L-9	2.0
21	ALEX VERGILESOV	PWNOH	11	W-34	W-113	L-2	N-	2.0
22	BILLY SHIELDS	AVAMH	10	W-32	L-19	W-29	L-13	2.0
23	ERIC ARMSTRONG	TRUMH	9	L-9	W-44	W-31	L-6	2.0
24	PHILIP SCHAPKER	RKSTH	11	L-2	W-43	W-44	L-11	2.0
25	DREW BIBB	LSONH	11	W-48	W-34	L-4	L-12	2.0
26	KEVIN RUPRECHT	RKSTH	11	L-6	L-18	W-39	W-46	2.0
27	PAT GEORGEN	CRDSH	12	L-13	L-11	W-48	W-44	2.0
28	DAN TAYLOR	LINDH	12	L-15	W-39	L-30	W-41	2.0
29	STEVE SHIMKUS	HLASH	12	L-4	W-46	L-22	W-45	2.0
30	BILLY CANTON	CNIAH	12	L-35	W-52	W-28	L-8	2.0
31	JOSHUA NAGEL	VIANH	10	L-16	W-41	L-23	W-40	2.0
32	STE3VE HOLLAND	LFCRH	12	L-22	W-48	L-7	W-47	2.0
33	RYAN LEIMKUHLE	HERMH	12	L-18	W-50	L-19	W-43	2.0
34	NATHAN JUDY	RKSTH	11	L-21	L-25	W-52	W-42	2.0
35	ZACHARY HAMBURG	JFFCH	10	W-30	L-14	D-37	L-17	1.5
36	CHARLES JOHNSON	CLAYH	10	L-1	D-38	L-17	W-51	1.5
37	BASIL KINCAID	CRDSH	12	L-5	W-45	D-35	L-16	1.5
38	JASON MCINTIRE	BVARH	12	W-50	D-36	L-14	L-15	1.5
39	JOEL KOPHLBUSCH	HERMH	12	D-40	L-28	L-26	W-50	1.5
40	ALWIN BORGMANN	OWENH	12	D-39	D-17	L-9	L-31	1.0
41	JULIE WISCH	HLASH	10	L-3	L-31	W-49	L-28	1.0
42	BRADY MOORE	SOSAH	11	L-11	W-51	L-12	L-34	1.0
43	JAMES STOVALL	LAQYH	12	W-47	L-24	L-8	L-33	1.0
44	CHRIS ARNOLD	HLASH	10	W-49	L-23	L-24	L-27	1.0
45	COLT STURGEON	CMIDH	11	W-51	L-37	L-10	L-29	1.0
46	ANTWON ROSS	BERKH	11	W-52	L-29	L-13	L-26	1.0
47	KEVIN DRISKILL	OWENH	11	L-43	W-49	L-20	L-22	1.0
48	JAMES KIRKPATRICK	PWSOH	9	L-25	L-32	L-27	B-	1.0
49	JOEY BELSHER	WASHH	9	L-44	L-47	L-41	W-52	1.0
50	TRAVIS MUSER	WASHH	10	L-38	L-33	D-51	L-39	0.5
51	TIM CHAPPELL	CRDSH	12	L-45	L-42	D-50	L-36	0.5
52	ALEX FAIGENBLAT	WLNDH	9	L-46	L-30	L-34	L-49	0.0

#### HIGH SCHOOL BOARD 2 INDIVIDUAL STANDINGS

	NAME	TEAM	GR	ROUND	ROUND	ROUND	ROUND	SCORE
				1	2	3	4	
1	CHRIS IMMELE	RKSTH	11	W-9	W-20	W-19	W-5	4.00
2	QUINTON MABINS	CONCH	11	W-7	W-26	W-17	W-4	4.0
3	MIKE VITALE	VIANH	11	D-14	W-36	W-18	W-22	3.5
4	THOMAS REHMEIER	JFFCH	9	W-30	W-6	W-8	L-2	3.0
5	KEITH YOUNG	CRDSH	11	W-31	W-11	W-21	L-1	3.0
6	NICK RUSSO	VIANH	12	W-12	L-4	W-27	W-242	3.0
7	TREVOR GLADBACK	CNIAH	12	L-2	W-37	W-28	W-14	3.0
8	ANDREW HOEKZEMA	WECRH	11	W-39	W-13	L-4	W-17	3.0
9	KYLE TUBERTY	VIANH	9	L-1	W-24	W-38	W-21	3.0
10	JACOB MCQUERRY	WMCHH	10	W-25	L-19	W-32	W-20	3.0
11	AARON DETERMING	TRUMH	10	W-22	L-5	W-37	W-18	3.0
12	BRIAN SMITH	PWSOH	12	L-6	W-39	W-23	W-25	3.0
13	JOHN HICKS	RKSTH	12	W-43	L-8	W-36	W-19	3.0
14	B. ELDER-WARBIN	CRDSH	12	D-3	W-38	W-15	L-7	2.5
15	ZACH NOWACK	OWENH	10	D-23	W-29	L-14	W-34	2.5
16	T. NAPIERLSKI	SPCEH	11	L-21	D-23	W-35	W-33	2.5
17	KENDAL DESISSO	WEP SH	12	W-28	W-30	L-2	L-8	2.0
18	JOHN POWERS	LINDH	9	W-34	W-31	L-3	L-11	2.0
19	TRENT LITTLETON	CMIDH	10	W-48	W-10	L-1	L-13	2.0
20	STEPHEN BRADDOCK	HLASH	9	W-29	L-1	W-45	L-20	2.0
21	COREY WISCHMEYER	SLMOH	11	W-16	W-43	L-5	L-9	2.0
22	KYLE WEEKS	CRDSH	11	L-11	W-27	W-41	L-3	2.0
23	BEN LAMPE	VYPKH	11	D-15	D-16	L-12	W-36	2.0
24	BRADLEY MILLS	AVAMH	9	W-47	L-9	W-26	L-6	2.0
25	DAKIN SLOSS	CLAYH	9	L-10	W-41	W-40	L-12	2.0
26	BEN SIMON	LINDH	12	W-40	L-2	L-24	W-45	2.0
27	MATTHEW DECAPO	RKSTH	11	W-33	L-22	L-6	W-38	2.0
28	VEJAY NAIR	CRDSH	11	L-17	W-42	L-7	W-41	2.0
29	KEITH STEGALL	SOSAH	11	L-20	L-15	W-39	W-44	2.0
30	JAMES VEST	LINDH	12	L-4	L-17	W-47	W-42	2.0
31	JIM STOTLER	LAQYH	12	L-5	L-18	W-48	W-37	2.0

32	EMILY GROWNEY	HLASH	12	L-36	W-47	L-10	W-40	2.0
33	RANDY BLAY	PRDYH	10	L-27	D-35	W-46	L-16	1.5
34	ALEX KELLY	HLASH	10	L-18	D-36	W-44	L-15	1.5
35	TABITHA DAVIS	WASHH	9	L-37	D-33	L-16	W-46	1.5
36	MAX ALTMAN	CLAYH	11	W-32	L-3	L-13	L-23	1.0
37	KRISTEN SHIVLEY	JFFCH	9	W-35	L-7	L-11	L-31	1.0
38	BLAKE EVERITT	HERMH	9	W-42	L-14	L-9	L-27	1.0
39	KEVIN POLO	LSONH	11	L-8	L-12	L-29	W-48	1.0
40	TOM HULSEY	OWENH	11	L-26	W-44	L-25	L-32	1.0
41	DAVID CROSSER	LFCRH	11	W-46	L-25	L-22	L-28	1.0
42	RYAN BOX	WLNDH	9	L-38	L-28	W-43	L-30	1.0
43	JUNG-YEON KIM	CHAMH	12	L-13	L-21	L-42	W-47	1.0
44	ADAM DAVIS	WASHH	10	W-45	L-40	L-34	L-29	1.0
45	MICHAEL BERGERON	LAQYH	10	L-44	W-48	L-20	L-26	1.0
46	JACOB PENICK	HERMH	10	L-41	D-34	L-33	L-35	0.5
47	SEAN WILLIAMSON	PWSOH	9	L-24	L-32	L-30	L-43	0.0
48	CHRIS LINDSEY	WMCHH	10	L-19	L-45	L-42	L-49	0.0

#### HIGH SCHOOL BOARD 3 INDIVIDUAL STANDINGS

	NAME	TEAM	GR	ROUND 1	ROUND 2	ROUND 3	ROUND 4	SCORE
1	JEFF FAUST	LINDH	12	W-25	W-16	W-19	W-5	4.0
2	KYLE SCHWENT	CRDSH	10	W-39	W-21	W-24	W-4	4.0
3	DAVID HICKS	RKSTH	10	D-18	W-37	W-27	W-26	3.5
4	MATTHEW CLASPILL	HLASH	11	W-17	W-26	W-6	L-2	3.0
5	MICHAEL SNEED	VIANH	9	W-15	W-39	W-11	L-1	3.0
6	A. SOLODUCHA	RKSTH	11	W-7	W-23	L-4	W-16	3.0
7	PATRICK ANDERSON	JFFCH	10	L-6	W-12	W-41	W-24	3.0
8	TROY WOLZ	JFFCH	10	W-32	L-11	W-29	W-21	3.0
9	KATY MUELLER	PWSOH	11	D-14	W-20	D-18	W-19	3.0
10	PAUL LEHMANN	CLAYH	10	L-16	W-22	W-20	W-17	3.0
11	SAM MEYER	WECRH	10	W-47	W-8	L-5	W-22	3.0
12	FRISBIE ALEX	WMCHH	11	W-45	L-7	W-23	W-25	3.0
13	HOGUE JON	LAQYH	10	L-20	W-48	W-28	W-18	3.0
14	KYLE BERRY	CHAMH	9	D-9	L-17	W-35	W-34	2.5
15	DAVID WEATHERS	LFCRH	9	L-5	D-34	W-36	W-27	2.5
16	MICHAEL MCMAHON	WEP SH	12	W-10	L-1	W-40	L-6	2.0
17	MARK DOBROWSKI	RKSTH	10	L-4	W-14	W-30	L-10	2.0
18	JERRY SUN	TRUMH	10	D-3	W-36	D-9	L-13	2.0
19	CARL PILGRAM	CRDSH	12	W-35	W-32	L-1	L-9	2.0
20	BRANDON MILLS	AVAMH	9	W-13	L-9	L-10	W-41	2.0
21	DANIEL WILLIAMS	LAQYH	10	W-31	L-2	W-44	L-8	2.0
22	N. OTRADOVEC	SPCEH	9	W-34	L-10	W-31	L-11	2.0
23	MAREK POPLAWSKI	CLAYH	10	W-28	L-6	L-12	W-43	2.0
24	COLBY LYONS	WMCHH	10	W-29	W-47	L-2	L-7	2.0
25	RANDY DAVENPORT	CNIAH	11	L-1	W-40	W-38	L-12	2.0
26	JAMES KIENKER	VIANH	12	W-42	L-4	W-37	L-3	2.0
27	ANDREW SIMPSON	PWSOH	10	W-46	W-42	L-3	L-15	2.0
28	TRAVIS SMITH	OWENH	11	L-23	W-44	L-13	W-36	2.0
29	BEN HEMPELMANN	OWENH	10	L-24	W-43	L-8	W-45	2.0
30	VINCE BORKOWSKI	VIANH	10	L-38	W-33	L-27	W-37	2.0
31	E. MCFOWLAND	CRDSH	9	L-21	W-38	L-22	W-44	2.0
32	JESSE MOORE	LSONH	12	L-8	L-19	W-48	W-40	2.0
33	KEVIN GATHRIGHT	HLASH	9	L-36	L-30	W-42	W-38	2.0
34	WILL FLORICK	LINDH	10	L-22	D-15	W-46	L-14	1.5
35	JOHN KRANKEL	VYPKH	12	L-19	D-46	L-14	W-47	1.5
36	MALIK GRANBERRY	CRDSH	10	W-33	L-18	L-15	L-28	1.0
37	D. HOLTERMANN	WASHH	10	W-43	L-3	L-26	L-30	1.0
38	JOE WORLEY	TRUMH	9	W-30	L-31	L-25	L-33	1.0
39	DAVID MILLER	WASHH	11	L-2	L-5	L-43	W-48	1.0
40	ROBIN HAVERMANN	WASHH	10	W-41	L-25	L-16	L-32	1.0
41	ANDREA ELS	HERMH	9	L-40	W-45	L-7	L-20	1.0
42	CINIDY DICKSON	LINDH	11	L-26	L-27	L-33	W-46	1.0
43	JOSH FOLAND	PRDYH	10	L-37	L-29	W-39	L-23	1.0
44	A. SCARBROUGH	WMCHH	10	W-48	L-28	L-21	L-31	1.0
45	E. SCHNEIDER	HLASH	12	L-12	L-41	W-47	L-29	1.0
46	AMY WELCH	HERMH	9	L-27	D-35	L-34	L-42	0.5
47	CHRIS KENNEDY	HERMH	11	L-11	L-24	L-45	L-35	0.0
48	N. ROUDEBUSCH	HLASH	9	L-44	L-13	L-32	L-39	0.0



HIGH SCHOOL BOARD 4 INDIVIDUAL STANDINGS

	NAME	TEAM	GR	ROUND	ROUND	ROUND	ROUND	SCORE
				1	2	3	4	
1	MICHAEL ESPOSITO	RKSTH	10	W-27	W-21	W-5	W-4	4.0
2	JONATHON AUTRY	WECRH	9	W-13	W-20	W-16	D-6	3.5
3	RYAN BENSON	WECRH	10	W-34	D-6	W-36	W-15	3.5
4	YI ZHAO	CLAYH	10	W-26	W-9	W-7	L-1	3.0
5	C. RICHMOND	PWSOH	9	W-32	W-8	L-1	W-28	3.0
6	NICK VANDERSLICE	JFFCH	10	W-22	D-3	W-37	D-2	3.0
7	ANDY ZOU	PWSOH	9	W-33	W-11	L-4	W-23	3.0
8	ERIC LANIGAN	CRDSH	11	W-23	L-5	W-17	W-14	3.0
9	TOM GAL	LINDH	12	W-29	L-4	W-39	W-31	3.0
10	JIM KURTZ	CRDSH	12	L-14	W-29	W-38	W-22	3.0
11	CRAIG FEDYNICH	TRUMH	9	W-47	L-7	W-35	W-21	3.0
12	JUSTIN BOWLING	LAQYH	10	L-20	W-39	W-25	W-26	3.0
13	TIM KILPER	VIANH	9	L-2	W-45	W-44	W-24	3.0
14	NICHOLAS WHITE	JFFCH	10	W-10	W-25	D-15	L-8	2.5
15	ALEX MESSINA	VIANH	11	W-40	W-24	D-14	L-3	2.5
16	TIM PARKO	VYPKH	10	W-49	W-41	L-2	D-20	2.5
17	ELIZABETH STEELE	WASHH	11	W-30	D-40	L-8	W-36	2.5
18	JACK CONNOLLY	VIANH	10	W-51	L-22	D-20	W-37	2.5
19	AUSTIN HENDRIX	LAQYH	9	D-36	L-38	W-41	W-40	2.5
20	JACK ALTMAN	CLAYH	10	W-12	L-2	D-18	D-16	2.0
21	JOSEPH MELLO	CLAYH	12	W-43	L-1	W-33	L-11	2.0
22	KI-SUK YOO	CHAMH	12	L-6	W-18	W-45	L-120	2.0
23	THADDEUS SMITH	LINDH	12	L-8	W-30	W-42	L-7	2.0
24	NATHAN LUEBBERT	HLASH	11	W-41	L-15	W-30	L-13	2.0
25	DAVID PEPPERS	WEP SH	11	W-28	L-14	L-12	W-48	2.0
26	DOUG HADEN	RKSTH	11	L-4	W-42	W-48	L-12	2.0
27	MARK KELSEY	LFCRH	11	L-1	W-43	L-28	W-39	2.0
28	S. HARRINGTON	TRUMH	10	L-25	W-50	W-27	L-5	2.0
29	M FRIEDRICHSON	RKSTH	10	L-9	L-10	W-50	W-42	2.0
30	SOO-HO JUNG	CHANH	10	W-31	L-23	L-24	W-43	2.0
31	NEHEMIAH DACRES	CRDSH	12	L-30	W-51	W-32	L-9	2.0
32	A. WINKELMANN	HERMH	1	L-5	W-44	L-31	W-46	2.0
33	COLIN CARRENDER	WMCHH	9	L-7	W-47	L-21	W-44	2.0
34	NICK REED	HLASH	10	L-3	L-37	W-51	W-49	2.0
35	TYLER LEPAGE	HLASH	9	L-42	B-	L-11	W-38	2.0
36	ZACH FORDC	SPCEH	9	D-19	W-46	L-3	L-17	1.5
37	JORDAN JUSTUS	PRDYH	9	D-46	W-34	L-6	L-18	1.5
38	MARK COCHRAN	PRDYH	9	L-17	W-19	L-10	L-35	1.0
39	BRIAN MCGRAW	CRDSH	12	W-48	L-12	L-9	L-27	1.0
40	CARL VOGLIARDO	LSONH	11	L-15	D-17	D-46	L-19	1.0
41	JOSH WETLING	OWENH	10	L-24	L-16	L-19	W-45	1.0
42	ALEX HAVERMANN	WASHH	9	W-35	L-26	L-23	L-29	1.0
43	CODY GELHERT	OWENH	10	L-21	L-27	W-47	L-30	1.0
44	ERIC REHAGEN	WASHH	10	B-	L-32	L-13	L-33	1.0
45	ISAAC WETZEL	WMCHH	9	W-50	L-13	L-22	L-41	1.0
46	JULIE PETERS	LINDH	9	D-37	L-36	D-40	L-32	1.0
47	BRYAN TEMME	HERMH	10	L-11	L-33	L-43	W-51	1.0
48	PATRICK SCHIERBER	LHASH	9	L-39	W-49	L-26	L-25	1.0
49	SARAH SMITH	HERMH	12	L-16	L-48	B-	L-34	1.0
50	CURTISBEASLEY	PWSOH	9	L-45	L-28	L-29	B-	1.0
51	B. GEVESHAUSEN	WMCHH	9	L-18	L-31	L-34	L-47	0.0

ARNOLD DENKER TOURNAMENT OF CHAMPIONS PLAYOFF

INDIVIDUAL STANDINGS

	NAME	TEAM	GR	ROUND	ROUND	ROUND	SCORE
				1	2	3	
1	JOSEPH GARNIER	UTYCH	12	W-4	W-8	W-3	3.0
2	JEREMY VOLKMANN	FHOWH	12	W-7	L-3	W-5	2.0
3	TOM EPPLIN-ZAPF	SLMOH	12	W-12	W-2	L-1	2.0
4	CHRIS IMMELE	RKSTH	11	L-1	W-6	W-10	2.0
5	BEN GOLDSCHMIDT	HSBGH	12	W-10	W-13	L-2	2.0
6	JONATHON AUTRY	WECRH	9	B-	L-4	W-12	2.0
7	THOMAS REHMEIER	JFFCH	9	L-2	W-11	D-8	1.5
8	KYLE SCHWENT	CRDSH	10	W-13	L-1	D-7	1.5
9	KEITH YOUNG	CRDSH	11	L-11	D-12	B-	1.5

10	JOHN HICKS	RKSTH	12	L-5	B-	L-4	1.0
11	JEFF FAUST	LINDH	12	W-9	L-7	N-	1.0
12	MICHAEL ESPOSITO	RKSTH	10	L-3	D-9	L-6	0.5
13	TYLER SEVERENCE	JFFCH	10	L-8	L-5	N-	0.0

NINTH GRADE AND UNDER INDIVIDUAL STANDINGS

	NAME	TEAM	GR	ROUND	ROUND	ROUND	ROUND	ROUND	ROUND	SCORE
				1	2	3	4	5	6	
1	JOSH MORRIS	CHAMH	8	W-9	W-11	W-21	W-8	W-2	W-5	6.0
2	CHRIS RICHMOND	PWSOH	9	W-27	W-24	W-20	W-6	L-1	W-12	5.0
3	ERIC ARMSTRONG	TRUMH	9	W-32	W-26	L-5	W-22	W-9	W-10	5.0
4	KYLE TUBERTY	VIANH	9	D-37	W-40	W-18	W-7	D-5	W-8	5.0
5	KAMRON ALFORD	RLLAH	9	W-39	W-30	W-3	W-19	D-4	L-1	4.5
6	ADAM KOENIG	SPCEH	9	W-17	W-23	D-7	L-2	W-28	W-19	4.5
7	NICHOLAS JEWELL	HLASH	9	W-36	W-46	D-6	L-4	W-17	W-15	4.5
8	STEPHEN BRADDOCK	HLASH	9	W-10	W-16	W-12	L-1	W-11	L-4	4.0
9	MICHAEL SNEED	VIANH	9	L-1	W-38	W-30	W-13	L-3	W-21	4.0
10	ANDY ZOU	PWSOH	9	L-8	W-47	W-14	W-16	W-19	L-3	4.0
11	CRAIG FEDYNICH	TRUMH	9	W-38	L-1	W-31	W-32	L-8	W-23	4.0
12	DANE GREER	CHAMH	7	W-43	W-41	L-8	W-28	W-25	L-2	4.0
13	TERRANCE BALDWIN	WMCHH	9	W-40	W-28	L-19	L-9	W-32	W-20	4.0
14	TIM KILPER	VIANH	9	W-29	L-19	L-10	W-40	W-42	W-25	4.0
15	JAMES DUFF	VIANH	9	L-22	W-39	W-46	W-20	W-21	L-7	4.0
16	KYLE BERRY	CHAMH	7	W-47	L-8	W-27	L-10	W-36	W-29	4.0
17	WARREN SHETLER	LAQYH	9	L-6	D-34	W-48	W-26	L-7	W-33	3.5
18	BARRY SKELTON	FTOSH	9	W-44	L-20	L-4	W-38	D-33	W-24	3.5
19	BRENT VOGEL	HLASH	9	W-31	W-14	W-13	L-5	L-10	L-6	3.0
20	NICK OTRADOVEC	SPDEH	9	W-25	W-18	L-2	L-15	W-35	L-13	3.0
21	PARTICK BEFFA	HLASH	9	W-42	W-22	L-1	W-33	L-15	L-9	3.0
22	COREY DAILEY	LAQYH	9	W-15	L-21	W-36	L-3	L-24	W-43	3.0
23	KRISTOFER BUTLER	MARQH	9	W-34	L-6	L-25	W-41	W-30	L-11	3.0
24	MELEA SHIMKUS	HLASH	9	W-45	L-2	L-32	W-34	W-22	L-18	3.0
25	PATRICK SCHREIBER	HLASH	9	L-20	W-44	W-23	W-37	L-12	L-14	3.0
26	C. GRUNDSTROM	HLASH	9	W-35	L-3	W-42	L-17	L-29	W-36	3.0
27	BRAD MILLER	BBONH	9	L-2	W-35	L-16	L-30	W-38	W-41	3.0
28	MATTHEW WOLTZ	FTOSH	9	W-33	L-13	W-49	L-12	L-6	W-39	3.0
29	JOE WORLEY	TRUMH	9	L-14	L-31	W-39	W-46	W-26	L-16	3.0
30	NATE ROUDEBUSCH	HLASH	9	W-48	L-5	L-9	W-27	L-23	W-37	3.0
31	CHRIS OLSON	FTOSH	9	L-19	W-29	L-11	L-36	W-47	W-42	3.0
32	STEPHEN KROGMEIER	CHAMH	9	L-3	W-37	W-24	L-11	L-13	D-35	2.5
33	COLBY LYONS	WMCHH	9	L-28	W-43	W-41	L-21	D-18	L-17	2.5
34	TRAVIS HILSE	BBONH	9	L-23	D-17	L-37	L-24	W-48	W-45	2.5
35	SEAN WILLIAMSON	PWSOH	9	L-26	L-27	B-	W-45	L-20	D-32	2.5
36	CHRIS COLLINS	FESTH	9	L-7	W-45	L-22	W-31	L-16	L-26	2.0
37	STONEY REID	LAQYH	9	D-4	L-32	W-34	L-25	D-45	W-30	2.0
38	BLAKE HARDIN	FESTH	9	L-11	L-9	W-44	L-18	L-27	W-46	2.0
39	KRISTEN SHIVLEY	JFFCH	9	L-5	L-15	L-29	W-48	W-49	L-28	2.0
40	ZACH FORD	SPCEH	9	L-13	L-4	W-47	L-14	L-41	W-49	2.0
41	CURTIS BEASLEY	PWSOH	9	B-	L-12	L-33	L-23	W-49	L-27	2.0
42	AUSTIN HENDRIX	LAQYH	9	L-21	W-48	L-26	W-49	L-14	L-31	2.0
43	KEVIN GATHRIGHT	HLASH	9	L-12	L-33	L-45	W-44	W-46	L-22	2.0
44	MAT HUBER	CHAMH	7	L-18	L-25	L-38	L-43	B-	W-47	2.0
45	MARTIN KNIPKER	CNIAH	9	L-24	L-36	W-43	L-35	D-37	L-34	1.5
46	BEN GUTHERIE	WECRH	9	W-49	L-7	L-15	L-29	L-43	L-38	1.0
47	ISAAC WETZEL	WMCHH	9	L-16	L-10	L-40	B-	L-31	L-44	1.0
48	EMILY HUDSON	CNIAH	9	L-30	L-42	L-17	L-39	L-34	B-	1.0
49	WILL RICHARDS	CHAMH	9	L-46	B-	W-28	L-42	L-39	L-40	1.0

EIGHTH GRADE AND UNDER INDIVIDUAL STANDINGS

	NAME	TEAM	GR	ROUND	ROUND	ROUND	ROUND	ROUND	ROUND	SCORE
				1	2	3	4	5	6	
1	BRAD SCHLOSSER	PYCEM	7	W-151	W-19	W-75	W-8	W-6	W-13	6.0
2	DOUGLAS HOWE	COJNM	8	W-142	W-45	W-68	W-69	W-7	W-5	6.0
3	JAMES KOPPEL	SPNGM	7	W-125	W-11	D-28	W-30	W-23	W-24	5.5
4	JASPER GROSSMAN	LDUEM	7	W-158	W-57	W-115	W-73	D-18	W-17	5.5
5	BRIAN PHILLIPS	LMARM	8	W-47	W-10	W-21	W-12	W-42	L-2	5.0
6	WALTER FU	SPNGM	8	W-48	W-29	W-77	W-52	L-1	W-25	5.0
7	JOSEPH PERAUD	MCKYM	8	W-112	W-86	W-27	W-34	L-2	W-26	5.0
8	TAYLOR TYREE	WASHM	8	W-64	W-32	W-85	L-1	W-68	W-41	5.0

9	MACK SU	WYDNM	8	W-79	W-40	W-116	L-18	W-33	W-37	5.0
10	JAKE AMANN	GTRYM	7	W-131	L-5	W-60	W-75	W-56	W-31	5.0
11	TOM MRRELL	PYCEM	8	W-132	L-3	W-107	W-71	W-32	W-44	5.0
12	JAMES CHEN	MICDH	7	W-153	W-62	W-31	L-5	W-69	W-43	5.0
13	KIRBY COMPTON	JNBSH	8	W-148	W-70	W-108	W-84	W-25	L-1	5.0
14	C. KLENKLEN	OSTRM	8	W-156	W-44	L-67	W-74	W-38	W-18	5.0
15	PETER HARRIS	SLPRH	7	W-167	W-123	W-76	L-25	W-67	W-27	5.0
16	BRANDON WILLIAMS	OSTRM	8	L-17	W-88	W-137	W-105	B-	W-42	5.0
17	ZACHARY CLAUS	MCKYM	7	W-16	W-38	W-26	D-23	W-28	L-4	4.5
18	ALEX ESPOSITO	ALLVM	7	W-117	W-82	W-49	W-9	D-4	L-14	4.5
19	MICHAEL MENZEL	WECRH	8	W-58	L-1	W-111	W-116	W-73	D-21	4.5
20	EVAN LUCKOW	PYCEM	8	W-92	D-22	W-59	L-28	W-107	W-61	4.5
21	JOE LUCKEY	SCLAM	7	W-139	W-112	L-5	W-81	W-39	D-19	4.5
22	STEPHANIE HULSEY	HZWDM	8	W-113	D-20	W-109	L-41	W-108	W-34	4.5
23	NICKI COLLINS	FESTM	7	W-168	W-80	W-56	D-17	L-3	W-59	4.5
24	DAVID WALTER	SMAAM	8	D-30	W-121	W-147	W-104	W-41	L-3	4.5
25	A. CHILTON	LMARM	6	W-148	W-46	W-35	W-15	L-13	L-6	4.0
26	W. WHITTENBURG	WYDNM	7	W-37	W-148	L-17	W-50	W-29	L-7	4.0
27	SAM BOWMAN	WECRH	7	W-60	W-133	L-7	W-57	W-45	L-15	4.0
28	P. HARRELSON	LMARM	8	W-90	W-151	D-3	W-20	L-17	D-30	4.0
29	CHRIS NOLE	HLLVM	8	W-46	L-6	W-97	W-95	L-26	W-87	4.0
30	WILLIAM HUPP	ALLVM	8	D-24	W-120	W-61	L-3	W-106	D-28	4.0
31	BRIAN BUNTON	LMARM	6	W-105	W-159	L-12	W-35	W-40	L-10	4.0
32	SAM MATHIS	ALLVM	7	W-128	L-8	W-127	W-36	L-11	W-52	4.0
33	DERON NERO	ALLVM	7	W-110	L-51	W-78	W-72	L-9	W-82	4.0
34	ERIC MONROE	WECRH	7	W-136	W-117	W-36	L-7	W-70	L-22	4.0
35	MARIO CORONADO	PYSOM	7	W-141	W-43	L-25	L-31	W-74	W-72	4.0
36	A. AITKENHEAD	BBONM	7	W-39	W-124	L-34	L-32	W-97	W-90	4.0
37	MICHAEL PRZETAK	CRDSH	8	L-26	W-114	W-126	W-58	W-82	L-9	4.0
38	CONNOR BRENDELL	LDUEM	7	W-63	L-17	W-152	W-89	L-14	W-84	4.0
39	AMBER NESS	LMARM	6	L-36	W-118	W-88	W-77	L-21	W-85	4.0
40	ROBERT WILLIAMS	ALLVM	7	W-149	L-9	W-53	W-119	L-31	W-69	4.0
41	SUSAN HORACK	WECRH	7	W-165	W-1130	W-71	W-22	L-24	L-8	4.0
42	ROBIN WOEHR	CRDSH	7	W-134	W-81	W-119	W-67	L-5	L-16	4.0
43	RICH TAYLOR	CARVM	8	W-155	L-35	W-135	W-49	W-84	L-12	4.0
44	KEEGAN BARRETT	SPNGM	8	W-150	L-14	W-128	W-115	W-85	L-11	4.0
45	RICHARD MATHIEU	SPNGM	7	W-168	L-2	W-129	W-76	L-27	W-78	4.0
46	JOHN CLARK	SOSAM	8	L-29	L-25	W-150	W-111	W-77	W-91	4.0
47	TAYLOR SMITH	HLLVM	8	L-5	L-71	W-80	W-136	W-120	W-95	4.0
48	BRANDON RAGLAND	SJASM	8	L-6	L-74	W-138	W-110	W-119	W-96	4.0
49	MATHEW AUTRY	SECRH	7	W-157	W-122	L-18	L-43	W-81	W-83	4.0
50	NATHANIEL JOHNSON	RLLAM	7	D-147	D-104	W-87	L-26	W-75	W-67	4.0
51	ROBERT MORRISSEY	SMAAM	8	L-70	W-33	W-118	L-68	W-116	W-73	4.0
52	DEREK HENDERSON	LMARM	2	W-103	W-149	W-74	L-6	B-	L-32	4.0
53	MICHAEL LEDOUX	SJASM	8	L-104	W-144	L-40	W-122	W-113	W-70	4.0
54	BEN BUNTON	LMARM	8	W-83	W-154	L-73	L-56	W-115	W-68	4.0
55	MELVIN THOMAS	ALLVM	7	L-72	L-69	W-157	W-118	W-101	W-76	4.0
56	DANIEL NIXON	WECRH	7	W-94	W-134	L-23	W-54	L-10	D-57	3.5
57	ANDREW VENABLE	SCLAM	7	W-80	L-4	W-110	L-27	W-71	D-56	3.5
58	ANDREW BURKETT	LMARM	7	L-19	W-102	W-65	L-37	D-105	W-104	3.5
59	TREY THOMAS	ALLVM	7	W-91	D-63	L-20	W-147	W-104	L-23	3.5
60	CHEYENNE DOLPHUS	ALLVM	7	L-27	W-92	L-10	W-152	W-98	D-65	3.5
61	ZACH MEYER	WECRH	7	D-109	W-155	L-30	W-66	W-62	L-20	3.5
62	ANDREW CONNOR	SCLAM	8	W-140	L-12	W-101	D-108	L-61	W-107	3.5
63	BEN WAGNON	SPNGM	6	L-38	D-59	L-64	W-149	W-89	W-108	3.5
64	V Q SONG	WYDNM	7	L-8	D-107	W-63	L-106	W-148	W-105	3.5
65	MATT GAMM	SOSAM	7	L-129	W-94	L-58	W-124	W-121	D-60	3.5
66	SHANE SANDERS	OSTRM	8	D-122	W-87	L-104	L-61	W-147	W-105	3.5
67	ARANDI LOPEZ	CARVM	6	W-100	W-79	W-14	L-42	L-15	L-50	3.0
68	SKY MILLER	KNNRM	6	W-96	W-132	L-2	W-51	L-8	L-54	3.0
69	AUSTIN LAWRENCE	LMARM	7	W-161	W-55	W-89	L-2	L-12	L-40	3.0
70	GARTH ADKINS	HLLVM	8	W-51	L-13	W-96	W-120	L-34	L-53	3.0
71	JOHN BONDS	SEYMM	8	W-98	W-47	L-41	L-11	L-57	W-127	3.0
72	BO COY	LMARM	7	W-55	W-93	L-84	L-33	W-92	L-35	3.0
73	ZAIN AGHA	CRDSH	7	W-143	W-160	W-54	L-4	L-19	L-51	3.0
74	JESSE BAER	WASHM	7	W-135	W-48	L-52	L-14	L-35	W-143	3.0
75	STEVEN WOLTERS	CARVM	6	W-106	W-163	L-1	L-10	L-50	W-132	3.0
76	MICHAEL LOWDER	WOODM	7	W-152	W-83	L-15	L-45	W-79	L-55	3.0
77	CORY CARLTON	WOODM	7	W-78	W-141	L-6	L-39	L-46	W-123	3.0
78	TYLER KJOVESTAD	MFLDM	7	L-77	W-91	L-33	W-135	W-100	L-45	3.0
79	BLAKE WURST	BRGRM	8	L-9	L-67	W-102	W-99	L-76	W-120	3.0

80	JON BOROWEIC	WOODM	7	L-57	L-23	L-47	W-139	W-109	W-135	3.0
81	TYRELL WHEELER	OSGTRM	8	W-163	L-42	W-100	L-21	L-49	W-115	3.0
82	WILLIAM EBEL	SCLAM	7	W-133	L-18	W-121	W-125	L-37	L-33	3.0
83	BRAD DYE	OSTRM	8	L-54	L-76	W-143	W-129	W-103	L-39	3.0
84	CHRIS EBERHARDT	CRDSH	8	W-130	W-167	W-72	L-13	L-43	L-38	3.0
85	KENT MILLER	CARVM	7	W-126	W-158	L-8	W-123	L-44	L-39	3.0
86	JOSH BINGAMAN	FTONM	8	W-93	L-7	L-105	W-1128	L-87	W-119	3.0
87	KYLE EDWARDS	WECRH	7	W-162	L-66	L-50	W-141	W-86	L-29	3.0
88	S. VISWANATHAN	WYDNM	7	W-99	L-16	L-39	W-156	L-90	W-134	3.0
89	ZACHARY HANSON	WECRH	7	L-111	W-140	L-69	L-38	L-63	W-117	3.0
90	KHAI HUNNER	SOSAM	7	L-28	L-105	W-162	W-137	W-88	L-36	3.0
91	DAVID LOVELL	MRCOM	7	L-59	L-78	W-134	W-131	W-123	L-46	3.0
92	RAYMOND LOPEZ	WOODM	7	L-20	L-60	W-151	W-127	L-72	W-144	3.0
93	JONATHAN HOGUE	MRCOM	7	L-86	L-72	L-106	W-114	W-118	W-116	3.0
94	KYLE ALFORD	RLLAM	7	L-56	L=65	W-133	L-117	W-122	W-121	3.0
95	JIAYU LI	WYENM	7	L-118	W-145	W-154	L-29	W-117	L-47	3.0
96	SMITH GRACE	WECRH	7	L-68	W-164	L-70	W-145	W-125	L-48	3.0
97	A. WASHINGTON	WOODM	7	L-115	W-136	L-29	W-144	L-36	W-125	3.0
98	CHRIS GOGGIN	WOODM	7	L-71	W-139	L-123	W-126	L-60	W-130	3.0
99	DEVON BERLENER	WASHM	7	L-88	D-106	D-122	L-79	W-154	W-137	3.0
100	KAYLA WALTERS	SJASM	6	L-67	W-165	L-81	W-130	L-78	W-126	3.0
101	MAIRE RYAN	SMAAM	8	L-124	W-166	L-62	W-153	L-55	W-131	3.0
102	TEDDY BINKHOLDER	BBONM	6	L-116	L-58	L-79	W-163	W-151	W-124	3.0
103	NATHAN BOOKOUT	SJASM	6	L-52	L-152	W-159	W-154	L-83	W-142	3.0
104	MALLORY HOWITT	BTOWM	7	W-53	D-50	W-66	L-24	L-59	L-58	2.5
105	DEREK PERONA	SJASM	7	L-31	W-90	W-86	L-16	D-58	L-64	2.5
106	DAN KUEHL	SMAAM	7	L-75	D-99	W-93	W-64	L-30	L-66	2.5
107	TOM MANLEY	ALLVM	7	W-164	D-64	L-11	W-109	L-20	L-62	2.5
108	NATHANIEL HENRY	MCKYM	8	W-144	W-156	L-13	D-62	L-22	L-63	2.5
109	TRYSTAN FANNING	CARVM	7	D-61	W-127	L-22	L-107	L-80	W-147	2.5
110	MATT GEISMAN	SMAAM	6	L-33	W-157	L-57	L-48	W-133	W-113	2.5
111	NICK CENTER	BBONM	6	L-89	W-138	L-19	L-46	W-156	D-112	2.5
112	JAMES WRIGHT	SJASM	8	L-7	L-21	L-140	W-162	W-128	D-111	2.5
113	CASEY BROWN	BRGRM	8	L-22	W-129	L-120	W-161	L-153	D-110	2.5
114	ALEC HEITERT	MCKYM	7	L-121	L-37	D-160	L-93	W-149	W-148	2.5
115	JARRID SNIDER	CARVM	6	W-97	W-131	L-4	L-44	L-54	L-81	2.0
116	PATRICK MCCARTHY	SJASM	6	W-102	W-153	L-9	L-19	L-51	L-93	2.0
117	RYAN WOODWARD	KNNRM	7	L-18	L-34	W-132	W-94	L-95	L-89	2.0
118	LARRY WILLIAMS	JASTM	8	W-95	L-39	L-51	L-55	L-93	W-156	2.0
119	JAMIE PARRISH	SEYMM	8	W-137	W-142	L-42	L-40	L-48	L-86	2.0
120	THERESA EEBEL	SCLAM	6	W-146	L-30	W-113	L-70	L-47	L-79	2.0
121	YANWEN TANG	LDUEM	7	W-114	L-24	L-82	W-140	L-65	L-94	2.0
122	ROY CHUNG	SEYMM	8	D-66	L-49	D-99	L-53	L-94	W-164	2.0
123	BEN STICKLER	RLLAM	8	W-159	L-15	W-98	L-85	L-91	L-77	2.0
124	DYLAN HOUSTON	BRGRM	7	W-101	L-36	L-125	L-65	W-145	L-102	2.0
125	ANGEL CARMONA	ALLVM	7	L-3	W-161	W-124	L-82	L-96	L-97	2.0
126	TERRAINE MURPHY	ALLVM	7	L-85	W-146	L-37	L-98	W-140	L-100	2.0
127	APRIL JOHNSTON	WECRH	7	W-145	L-109	L-32	L-92	W-146	L-71	2.0
128	MARINA DAVIS	LMARM	5	L-32	W-143	L-44	L-86	L-112	W-160	2.0
129	JUBELL DANIEL	KNNRM	5	W-65	L-113	L-45	L-83	L-134	W-163	2.0
130	STEVE CUMMINS	SEYMM	7	L-84	L-41	L-139	L-100	W-155	L-98	2.0
131	PHILLIP WOODWARD	KNNRM	8	L-10	L-115	W-144	L-91	W-152	L-101	2.0
132	ANDREW ALLBROOK	WOODM	8	L-11	L-68	L-117	W-157	W-136	L-75	2.0
133	BRANDON LLOYD	SJASM	8	L-82	L-27	L-94	W-138	L-110	W-161	2.0
134	CLINT BIBLE	HLLVM	8	L-42	L-56	L-91	W-168	W-129	L-88	2.0
135	SARAH BICKHAM	CBLLM	7	L-74	W-162	L-43	L-78	W-153	L-80	2.0
136	COLIN JUSTICE	CARVM	6	L-34	L-97	W-158	L-47	L-132	W-153	2.0
137	PATRICK DOHERTY	CRDSH	7	L-119	W-168	L-16	L-90	W-141	L-99	2.0
138	SHELDIN MITCHELL	CARVM	7	L-25	L-111	L-48	L-133	W-159	W-154	2.0
139	EMILY FEDYNICH	BRGRM	7	L-21	L-98	L-130	L-80	W-157	W-162	2.0
140	DAMION CRAFT	WOODM	7	L-62	L-89	W-112	L-121	L-126	W-151	2.0
141	BRENNAN WEAVER	HLLVM	8	L-35	L-77	W-164	L-87	L-137	W-152	2.0
142	TREVOR CANNEFAX	CARBM	8	L-2	L-119	D-165	D-160	W-161	L-103	2.0
143	ANA TANNER	WECRH	7	L-73	L-128	L-83	W-158	W-160	L-74	2.0
144	KEVIN LIN	WYDNM	7	L-108	L-53	L-131	W-159	W-166	L-92	2.0
145	DANIEL LATERZA	WOODM	7	L-127	L-95	W-167	L-96	L-124	W-150	2.0
146	DESERIE LETERZA	WOODM	7	L-120	L-126	L-153	W-167	L-127	W-155	2.0
147	COLLIN DOBMEYER	WYDNM	7	D-50	W-150	L-24	L-59	L-66	L-109	1.5
148	KELSEY CASTRO	BRGRM	8	L-13	L-26	D-149	W-165	L-64	L-114	1.5
149	JAMES HOUCHINS	FTONM	7	L-40	L-152	D-148	L-63	L-114	W-165	1.5
150	ANGELA ADAMSON	CARVM	7	L-44	L-147	L-46	D-166	W-165	L-145	1.5

151	CARYN JACKSON	FTONM	8	L-1	L-28	L-92	W-164	L-102	L-140	1.0
152	D. BROWN-SCHNURR	CRDSH	7	L-76	W-103	L-38	L-60	L-131	L-141	1.0
153	KYLE BOFFA	FTONM	8	L-12	L-116	W-146	L-101	L-135	L-136	1.0
154	ANTHONY JONES	BRGRM	8	W-160	L-54	L-95	L-103	L-99	L-138	1.0
155	GUNNER MARCOLLA	SOSAM	7	L-43	L-161	W-166	L-97	L-130	W-146	1.0
156	LANCE NUNNERY	WOODM	8	L-14	L-108	W-168	L-88	L-111	L-118	1.0
157	SHELBY HODGENS	FTONM	7	L-49	L-110	L-55	L-132	L-139	W-167	1.0
158	KELSON ROSBACH	HLLVM	8	L-4	L-85	L-136	L-143	L-164	W-166	1.0
159	NICK LAHMANN	BRGRM	8	L-123	L-31	L-103	L-144	L-138	W-168	1.0
160	STEVEN BOURET	WOODM	8	L-154	L-73	D-114	D-142	L-143	L-128	1.0
161	CHRISTINA JACKSON	WOODM	8	L-69	L-125	W-163	L-113	L-142	L-133	1.0
162	TOMMY O'DONOVAN	WOODM	7	L-87	L-135	L-90	L-112	W-167	L-139	1.0
163	DANNY LINCOLN	FTONM	8	L-81	L-75	L-161	L-102	W-168	L-129	1.0
164	AMBER REED	SJASM	6	L-107	L-96	L-141	L-151	W-158	L-122	1.0
165	ALYSSA MERCER	BBONM	6	L-41	L-100	D-142	L-148	L-150	L-149	0.5
166	TYLER SHIRK	FTONM	7	L-45	L-101	L-155	D-150	L-144	L-158	0.0
167	JAKE SCOTT	BRGRM	8	L-15	L-84	L-145	L-146	L-162	L-157	0.0
168	CORINNA WAGLER	SJASM	6	L-23	L-137	L-156	L-134	L-163	L-159	0.0

#### SIXTH GRADE AND UNDER INDIVIDUAL STANDINGS

	NAME	TEAM	GR	ROUND	ROUND	ROUND	ROUND	ROUND	ROUND	SCORE
				1	2	3	4	5	6	
1	HENRY CAO	PYCEM	6	W-21	W-55	W-28	W-7	W-6	W-8	6.0
2	CALEB HUFF	RSONE	4	W-26	D-15	W-62	W-31	W-9	W-13	5.5
3	ARJUN KHURANA	GTRYM	6	W-24	W-63	W-4	W-10	L-8	W-14	5.0
4	ISADORA GROSSMAN	LDUEM	6	W-22	W-39	L-3	W-55	W-21	W-18	5.0
5	JACK WELSH	NEWCE	6	W-42	W-44	W-14	L-6	W-36	W-11	5.0
6	LAURA WILLIAMS	JASTM	6	W-87	W-38	W-20	W-5	L-1	W-16	5.0
7	ADAM OLIVER	RSONE	6	W-87	W-32	W-41	L-1	W-40	W-12	5.0
8	CALEB BROWN	RSONE	6	W-70	W-37	W-30	D-9	W-3	L-1	4.5
9	JACOB DIDIER	PYCEM	6	W-43	W-34	W-18	D-8	L-2	W-29	4.5
10	EDWARD LI	PYCEM	6	W-65	W-17	W-36	L-3	D-13	W-28	4.5
11	CHRIS TREESE	HINFM	5	W-58	D-29	D-19	W-24	W-22	L-5	4.0
12	CHARLES TRICK	WEPSM	6	L-57	W-26	W-56	W-27	W-23	L-7	4.0
13	ADIYTA SUBBARAO	PYWEM	6	W-60	D-19	W-59	W-35	D-10	L-2	4.0
14	NOAH SONDOV-GOLD	LDUEM	6	W-83	W-40	L-5	W-46	W-20	L-3	4.0
15	JAY RYAN	STEGM	6	W-52	L-2	L-31	W-69	D-35	W-41	4.0
16	DYLAN GLOVER	RSONE	5	L-37	W-60	W-29	W-38	W-41	L-6	4.0
17	STEPHEN PACE	ALLVM	6	W-48	L-10	W-63	L-23	W-45	W-34	4.0
18	JAMAL LEE	KCLNM	6	W-80	W-64	L-9	W-25	W-33	L-4	4.0
19	HASSAN ALI	ALLVM	6	W-47	D-13	D-11	L-28	W-71	W-36	4.0
20	ERIC FENNER	ALLVM	6	W-82	2-54	L-6	W-32	L-14	W-42	4.0
21	JOSHUA BURGER	RSONE	1	L-1	W-76	W-64	W-62	L-4	W-40	4.0
22	MONICA LITTLE	ALLVM	5	L-4	W-48	W-68	W-65	L-11	W-44	4.0
23	NICOLE HULSEY	BTONE	6	L-55	W-70	W-43	W-17	L-12	W-39	4.0
24	BEN PUDENZ	ALLVM	4	L-3	W-67	W-71	L-11	W-57	W-47	4.0
25	CHARLIE BEARD	WYDNM	6	W-67	L-28	W-72	L-18	W-51	W-37	4.0
26	ALICIA BROWN	MCKYM	6	L-2	L-12	W-61	W-63	W-62	W-38	4.0
27	ELENA ARRENDONDO	HINFM	6	L-8	W-61	W-80	L-12	W-49	W-35	4.0
28	AARON CHUNN	MCKYM	6	W-68	W-25	L-1	W-19	D-34	L-10	3.5
29	SCOTT JEFFREY	WYDNM	6	W-74	D-11	L-16	W-59	W-31	L-9	3.5
30	KEVIN WAN	LDUEM	6	W-46	W-49	L-8	L-34	W-55	D-32	3.5
31	HAROLD WALKER	JOWAM	6	W-79	D-35	W-15	L-2	L-29	W-56	3.5
32	BRETT VIRGIN	NEWCE	6	W-69	L-7	W-66	L-20	W-50	D-30	3.5
33	LUCAS MUELLER	PYCEM	6	D-59	W-53	L-35	W-44	L-18	W-58	3.5
34	JOSIAH REYNOLDS	FIPRM	6	W-78	L-9	W-84	W-30	D-28	L-17	3.5
35	PHILLIP DEARING	WYDNM	6	W-50	D-31	W-33	L-13	D-15	L-27	3.5
36	SAGER YADEMA	WYDNM	6	W-76	W-45	L-10	W-39	L-5	L-19	3.0
37	JEREMY GOERGE	FACRM	6	W-16	L-8	L-47	W-54	W-66	L-25	3.0
38	SAM ROONEY	SMAAM	5	W-72	L-6	W-54	L-16	W-67	L-26	3.0
39	DAVID ARRENDONDO	HINFM	4	W-56	L-4	W-50	L-36	W-72	L-23	3.0
40	NICHOLAS SCHMIDT	MCKYM	6	W-81	L-14	W-57	W-47	L-7	L-21	3.0
41	SAM FOX	SEYMM	6	W-73	W-66	L-7	W-45	L-16	L15	3.0
42	DYLAN WELKER	SEYMM	6	L-5	L-73	W-52	W-78	W-48	L-20	3.0
43	NICK DYL	LAQYM	5	L-9	W-52	L-23	L-50	W-83	W-69	3.0
44	SARAH HARNESS	SMAAM	3	W-84	L-5	W-69	L-43	W-65	L-22	3.0
45	KODY RENNER	FTONM	6	W-75	L-36	W-49	L-41	L-17	W-64	3.0
46	CHAD ROSENCRANS	LAQYM	6	L-30	W-81	W-51	L-14	L-47	W-67	3.0
47	JACOB SCHMIDT	NEWCE	4	L-19	W-87	W-37	L-40	W-46	L-24	3.0
48	JOHN KING	JOWAM	6	L-17	L-22	W-75	W-74	L-42	W-65	3.0

49	DALTON HELMS	SEYMM	6	W-51	L-30	L-45	W-84	L-27	W-66	3.0
50	THOMAS ADAMS	WOODM	6	L-35	W-79	L-39	W-43	L-32	W-75	3.0
51	LOGAN SURFACE	FACRM	6	L-49	W-86	L-46	W-53	L-25	W-76	3.0
52	JON BOLHOFNER	HINFM	6	L-15	L-43	L-42	W-79	W-68	W-70	3.0
53	CONOR TREESE	HINFM	0	D-85	L-33	D-58	L-51	W-74	W-71	3.0
54	ANTHONY CHUBB	LAQYM	6	W-86	L-20	L-38	L-37	W-82	L-62	2.5
55	ALEX DODD	HINFM	5	W-23	L-1	W-73	L-4	L-30	D-57	2.5
56	XIAOTONG YI	WYDNM	6	L-39	W-75	L-12	D-60	W-59	L-31	2.5
57	JAMES MITCHELL	WOODM	6	W-12	L-62	L-40	W-73	L-24	D-55	2.5
58	BRANDON ANDERSON	LAQYM	5	L-11	L-72	D-53	W-81	W-60	L-33	2.5
59	ANTHONY PARDO	HINFM	6	D-33	W-85	L-13	L-29	L-56	W-78	2.5
60	RYAN HEADRICK	DTPHM	6	L-13	L-16	W-83	D-56	L-58	W-80	2.5
61	GARRETT BRIGHT	SEYMM	6	L-66	L-27	L-26	B-	D-78	W-81	2.5
62	PATRICK RYAN	SMAAM	4	B-	W-57	L-2	L-21	L-26	L-54	2.0
63	JERRY CLARK	HRTVM	6	W-77	L-3	L-17	L-26	L-70	W-83	2.0
64	JUSTIN SCHMIDT	NEWCM	1	W-71	L-18	L-21	L-67	W-73	L-45	2.0
65	BRIAN MCKEE	LAQYM	5	L-10	W-78	W-85	L-22	L-44	L-48	2.0
66	E. JAIN-WASHBURN	FIPRM	6	W-61	L-41	L-32	W-70	L-37	L-49	2.0
67	ARIS CAZIER	WOODM	6	L-25	L-24	W-86	W-64	L-38	L-46	2.0
68	JOSH NELSON	LAQYM	5	L-28	W-74	L-22	L-72	L-52	W-85	2.0
69	DEVAN LABRIER	FTONM	6	L-32	W-77	L-44	L-15	W-80	L-433	2.0
70	KAYLA ONEAL	JOWAE	5	L-7	L-23	W-87	L-66	W-63	L-52	2.0
71	ROBERT HAGERTY	WYDNM	6	L-64	W-83	L-24	W-82	L-19	L-53	2.0
72	CHRIS PAYNE	WOODM	6	L-38	W-58	L-25	W-68	L-39	N-	2.0
73	OLIVER ZACHARY	FTONM	6	L-41	W-42	L-55	L-57	L-64	W-79	2.0
74	MICHAEL KOZAK	HRTVM	6	L-29	L-68	W-76	L-48	L-53	W-87	2.0
75	PATRICK MEGOWN	SMAAM	2	L-45	L-56	L-48	W-86	W-84	L-50	2.0
76	JULIA TOMMASSOW	NEWCE	3	L-36	L-21	L-74	W-87	W-85	L-51	2.0
77	SYDNEY JONES	ALLVM	2	L-63	L-69	L-78	L-83	B-	W-84	2.0
78	JAMIE YOST	FACRM	6	L-34	L-65	W-77	L-42	D-61	L-59	1.5
79	RACHEL RRONEY	MIRMM	5	L-31	L-50	D-81	L-52	W-86	L-73	1.5
80	DANIEL SCHMIDT	NEWCE	0	L-18	B-	L-27	D-85	L-69	L-60	1.5
81	MASON BELL	FTONM	6	L-40	L-46	D-79	L-58	W-87	L-61	1.5
82	BENJAMIN WALTER	SMAAM	3	L-20	L-84	B-	L-71	L-54	D-86	1.5
83	DYMOND MARTIN	JOWAE	5	L-14	L-71	L-60	W-77	L-43	L-63	1.0
84	ERIC MORGAN	FTONM	6	;-44	L-82	L-34	L-49	L-75	L-77	1.0
85	EMILY BENNETT	FACRM	6	D-53	L-59	L-65	D-80	L-76	L-68	1.0
86	ETHAN WATKINS	DTPHM	4	L-54	L-51	L-67	L-75	L-79	D-82	0.5
87	JENNIFER LUNDY	DTPHM	5	L-6	L-47	L-70	L-76	L-81	L-74	0.0

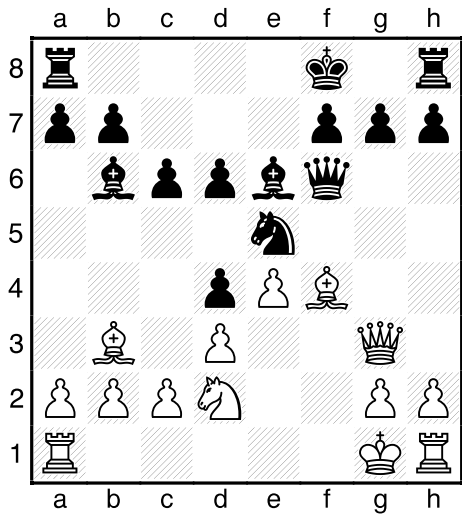
FIFTH GRADE AND UNDER INDIVIDUAL STANDINGS

	NAME	TEAM	GR	ROUND	ROUND	ROUND	ROUND	ROUND	ROUND	SCORE
				1	2	3	4	5	6	
1	KEVIN CAO	SHVYE	2	W-22	W-69	W-33	W-24	W-1	W-6	6.0
2	HUGHES LEE	LSONE	4	W-66	W-46	W-27	W-20	W-7	W-5	6.0
3	WILLIAM TONG	PMNTE	2	W-10	W-72	W-28	W-8	L-6	W-14	5.0
4	RUSS NICHOLAS	BTOWM	3	W-29	W-39	L-19	L-5	W-24	W-38	5.0
5	WILL BERNARD	SLTRE	5	W-96	W-17	W-60	W-4	W-15	L-2	5.0
6	RIO PIMENTEL	KNNDE	4	W-16	W-23	W-83	W-56	W-3	L-1	5.0
7	JOSH GOLLUB	FSTHE	5	W-52	W-21	W-25	W-42	L-2	W-26	5.0
8	JEREMY HIETZMAN	MTWAE	5	W-112	W-9	W-68	L-3	W-28	W-31	5.0
9	NATE NOSS	GNPSE	4	W-26	L-8	W-62	W-73	W-23	W-21	5.0
10	LUKE HERBST	HMANE	3	L-3	W-44	W-30	W-83	W-61	W-19	5.0
11	JACOB HAMACHER	RMKTE	5	W-101	W-32	W-57	W-61	L-1	W-37	5.0
12	VICTOR GUERREO	MTWAE	3	W-30	L-43	W-40	W-82	W-20	W-42	5.0
13	JACOB KANTER	CFDDE	3	W-45	L-24	W-95	W-33	W-54	W-22	5.0
14	ISAIAH GADSON	CECRE	4	W-63	W-84	W-82	W-36	W-49	L-3	5.0
15	PETER LAWRENCE	SRRDM	5	L-71	W-35	W-93	W-55	L-5	D-16	4.5
16	MARC KRANTZ	MTWAE	4	L-6	W-48	W-86	W-93	W-35	D-15	4.5
17	CHRISTIAN NIELSEN	FACRM	5	W-39	L-5	D-18	W-98	W-87	W-49	4.5
18	LESTER TURILLI	SVANM	4	W-58	L-47	D-17	W-85	W-43	W-46	4.5
19	JOE ESSWEIN	SCLAM	5	W-37	W-38	L-4	W-60	W-32	L-10	4.0
20	BRANDI MARCAK	FACRM	5	W-62	W-34	W-67	L-2	L-12	W-64	4.0
21	VIKRAM ARUN	MLLCE	54	W-43	L-7	W-63	W-29	W-55	L-9	4.0
22	TRENT GARTON	MTWAE	5	L-1	W-96	W-65	W-44	W-56	L-13	4.0
23	JEFFREY LIN	SHVYE	4	W-84	L-6	W-48	W-68	L-9	W-61	4.0
24	NICK HELMBACHER	MSNRE	3	W-136	W-13	W-64	L-1	L-4	W-68	4.0
25	STEVEN KETCHMARK	BTOWM	2	W-75	W-45	L-7	W-66	L-37	W-55	4.0
26	VINCENT ALTOMARI	COCAM	4	L-9	W-65	W-76	W-108	W-36	L-7	4.0
27	GLEN LANE	BTOWM	3	W-109	W-80	L-2	L-28	W-74	W-50	4.0

28	TRISTAN HAWKINS	SVANM	3	W-74	W-122	L-3	W-27	L-8	W-82	4.0
29	CHRIS MOODY	CFLDE	5	L-4	W-91	W-70	L-21	W-77	W-69	4.0
30	MUSTAFA BAIG	KNNDE	4	L-12	W-124	L-10	W-70	W-62	W-54	4.0
31	JOHN KELLY	CPOP	4	L-55	W-51	W-121	W-67	W-34	L-8	4.0
32	A. MARLEY-WEAVER	MPHYE	4	W-114	L-11	W-81	W-64	L-19	W-63	4.0
33	ARJUN NANDY	BTOWM	3	W-135	W-79	L-1	L-13	W-67	W-56	4.0
34	SHEA RADEL	PEMHM	3	W-50	L-20	W-102	W-59	L-31	W-58	4.0
35	AARON HARRIS	MRCOM	4	W-110	L-15	W-115	W-58	L-16	W-59	4.0
36	TREVOR KLEIER	SEYMM	5	W-104	W-54	W-100	L-14	L-26	W-65	4.0
37	JULIA EPLIN-ZAPF	KNNDE	5	L-19	W-92	W-99	W-100	W-25	L-11	4.0
38	JOSHUA GEORGE	FACRM	5	W-116	L-19	-92	W-103	W-57	L-4	4.0
39	MATT GAL	SAPPE	5	L-27	L-4	W-129	W-88	W-94	W-60	4.0
40	BEN TRASK	KNNDE	4	W-111	L-42	L-12	W-107	W-92	W-57	4.0
41	WILLIAM DULA	KNNDE	4	W-97	W-104	L-42	L-54	W-73	W-71	4.0
42	JOSEPH LAWRENCE	SRRDM	4	W-51	W-40	W-41	L-7	D-46	L-12	3.5
43	BENJI WOLFF	SPDEE	5	L-21	W-12	D-98	W-90	L-18	W-83	3.5
44	DAVID BERKS	BTOWM	2	W-99	L-10	W-77	L-22	D-82	W-84	3.5
45	MASON EVERETT	PEMHM	5	L-13	L-25	D-53	W-125	W-90	W-86	3.5
46	DAVID SHI	WWBKE	4	W-105	L-2	W-127	W-95	D-42	L-18	3.5
47	M. LAWRENCE	PEMHM	3	L-93	L-18	W-80	W-72	D-48	W-89	3.5
48	A. SHAUMBERG	JCSJM	3	W-103	L-16	L-23	W-113	D-47	W-95	3.5
49	JOHN ESSWEIN	SCLAM	3	D-89	W-117	W-123	W-87	L-14	W-17	3.5
50	GANNON BUTLER	WTHRE	4	L-34	W-108	D-88	W-86	W-89	L-27	3.5
51	BRYAN KEYES	SVANM	5	L-42	L-31	W-97	W-127	D-83	W-87	3.5
52	RYAN LEE	RMDWE	4	L-7	L-57	D-96	W-130	W-108	W-88	3.5
53	BEN RUIZ	SEYMM	3	L-60	L-59	D-45	W-136	W-121	W-85	3.5
54	JABEZ CAMPBELL	HLLVM	4	W-118	L-36	W-75	W-41	L-13	L-30	3.0
55	JACK PLATTS	PEMHM	5	W-31	W-70	W-94	L-15	L-21	L-25	3.0
56	IAN BREAKFIELD	SRRDM	3	W-78	W-119	W-73	L-6	L-22	L-33	3.0
57	A. BREAKFIELD	SRRDM	2	W-88	W-52	L-11	W-106	L-38	L-40	3.0
58	TRISTAN PAPES	KNNDE	3	W-18	L-113	W-69	L-35	W-76	L-34	3.0
59	MATT BAVLISK	SCLAM	5	L-67	W-53	W-72	L-34	W-75	L-35	3.0
60	SETH JOHNSON	RMKTE	3	W-53	W-114	L-5	L-19	W-93	L-39	3.0
61	A. PALANIAPPIAN	KNNDM	2	W-90	W-105	W-106	L-11	L-10	L-23	3.0
62	CONNOR NANNEMAN	JCICM	5	L-20	W-116	L-9	W-81	L-30	W-108	3.0
63	JUSTINCRAIN	KNNDE	4	L-14	W-107	L-21	W-119	W-95	L-32	3.0
64	GARRETT HASLAG	JCICM	5	W-102	L-71	L-24	W-32	W-110	L-20	3.0
65	DEVIN BROWN	SVANM	5	W-107	L-26	L-22	W-114	W-66	L-36	3.0
66	NATHAN STUERTZ	KNNDE	5	L-2	W-127	W-78	L-25	L-65	W-93	3.0
67	OLIVIA HUDDLESTON-	KNNDE	5	W-59	W-126	L-20	L-31	L-33	W-110	3.0
68	WILLIAM SPAETH	SCLAM	3	W-124	W-111	L-8	L-23	W-106	L-24	3.0
69	CHAD BELL	MRCOM	4	W-121	L-1	L-58	W-102	W-103	L-29	3.0
70	ALI DYN	SRRDM	5	W-79	L-55	L-29	L-30	W-107	W-92	3.0
71	NIDHI KHURANA	RWAYM	4	L-15	L-64	W-104	W-91	W-100	L-41	3.0
72	M. SYED-AHMED	KNNDE	5	W-126	L-3	L-59	L-47	W-99	W-97	3.0
73	COLLIN GUSTIN	BTOWM	3	W-133	W-118	L-56	L-9	L-41	W-102	3.0
74	JOHN BURGER	RSONE	0	L-28	L-99	W-122	W-112	L-27	W-119	3.0
75	HASAM BAIG	KNNDE	1	L-25	W-109	L-54	W-111	L-59	W-120	3.0
76	JEREMY WOLTERS	JCSJM	3	L-92	L-97	L-26	W-105	L-58	W-101	3.0
77	DIANE SHEAD	JOWAE	5	W-122	L-82	L-44	W-128	L-29	W-100	3.0
78	BEN DERKS	BTOWM	0	L-56	W-129	L-66	D-84	W-101	W-113	3.0
79	DANIEL WOLTZ	FIPRE	5	L-70	L-33	W-134	L-92	W-127	W-94	3.0
80	TERLISHA BAMS	JOWAE	5	L-95	L-27	L-47	W-129	W-128	W-103	3.0
81	REID CHUNN	KNNDE	3	L-94	W-135	L-32	L-62	W-104	W-106	3.0
82	DANIEL SHUM	PEMHM	5	W-120	W-77	L-14	L-12	D-44	L-28	2.5
83	NICOLE CHEN	BTOWM	2	W-132	W-120	L-6	L-10	D-51	L-43	2.5
84	JACOB MILLIGAN	SEYMM	5	L-23	L-14	W-124	D-78	W-98	L-44	2.5
85	LUKE HENDERSON	JCSJM	3	D-86	W-89	W-87	L-18	L-117	L-53	2.5
86	MIKE MOYER	BTOWM	1	D-85	W-131	L-16	L-50	W-96	L-45	2.5
87	RYAN WELTE	PEMHM	2	D-125	L-128	W-85	L-49	L-17	L-51	2.5
88	LAUREN STUERTZ	KNNDE	2	L-57	W-133	D-50	L-39	W-123	L-52	2.5
89	KIRK QUIGLESS	CATHM	3	D-49	L-85	W-131	W-123	L-50	L-47	2.5
90	PAUL WILLIAMS	JASTM	2	L-61	L-130	W-125	L-43	L-45	W-121	2.5
91	JAMES SAPPINGTON	SVANM	3	L-98	L-29	W-136	L-71	D-105	W-123	2.5
92	TURO VIERS	PEMHM	2	L-76	L-37	W-38	L-79	D-40	W-70	2.5
93	JONATHAN BOCKHAM	RSONE	3	W-47	W-115	L-15	L-16	L-60	L-66	2.0
94	BYRON MCLAUGHLIN	RSONE	2	W-81	W-112	L-55	L-46	L-39	L-79	2.0
95	REBECCA SUTTON	HLLVM	3	W-80	L-106	L-13	W-115	L-63	L-48	2.0
96	DANIEL CHUNG	SEYMM	4	L-5	L-22	D-52	W-131	L-86	D-117	2.0
97	CIANAN LESLEY	PEMHM	4	L-41	L-76	L-51	W-118	W-112	L-72	2.0
98	GABRIELLE MESNIER	GNTSE	2	W-91	L-101	D-43	L-17	L-84	D-111	2.0

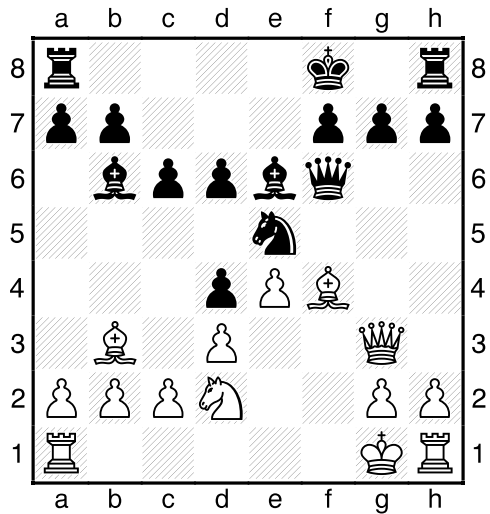
99	TIM BAVLSIK	SCLAM	2	L-44	W-74	L-37	D-101	L-72	D-122	2.0
100	KENNY SWEENEY	BTOWM	1	W-129	W-110	L-36	L-37	L-71	L-77	2.0
101	MATT SLOVENSKY	SVANM	4	L-11	W-98	L-108	D-99	D-78	L-76	2.0
102	ALEX MESNIER	GNTSE	3	L-64	W-134	L-34	L-69	W-114	L-73	2.0
103	MATTHEW NELSON	PENHM	2	L-48	W-132	W-113	L-38	L-69	L-80	2.0
104	ANTONE BROWN	JOWAE	4	L-36	L-41	L-71	W-126	L-81	W-128	2.0
105	KATHRYN GARMON	MTWAE	4	L-46	L-61	W-116	L-76	D-91	D-109	2.0
106	DAVID WEINSTEIN	ROSSE	4	W-113	W-95	L-61	L-57	L-68	L-81	2.0
107	AUSTIN CORNELISON	SEYMM	3	L-65	L-64	W-118	L-40	L-70	W-130	2.0
108	REBECCA BAVLSIK	SCLAM	4	B-	L-50	W-101	L-26	L-52	L-62	2.0
109	OSCAR METH	PEMHM	1	L-27	L-75	L-112	W-116	D-111	D-105	2.0
110	JESSIE RENFRO	SVANM	4	L-35	L-100	W-120	W-132	L-64	L-67	2.0
111	T. KICHENLOW	JOWAE	4	L-40	L-68	W-130	L-75	D-109	D-98	2.0
112	FLETCHER HALFAKER	SVANM	5	L-8	L-94	W-109	L-74	L-97	W-127	2.0
113	RALPH GREEN	JOWAE	5	L-106	W-58	L-103	L-48	W-133	L-78	2.0
114	ALEXIS WHITE	JOWAE	5	L-32	L-60	W-133	L-65	L-102	W-131	2.0
115	MICHAEL COBURN	JCSJM	3	W-134	L-93	L-35	L-95	L-119	W-132	2.0
116	JAMES HUNTER	JOWAE	4	L-38	L-62	L-105	L-109	W-135	W-134	2.0
117	CANDICE PAPES	KNNDE	1	D-131	L-49	D-128	W-121	L-85	D-96	2.0
118	INDIA SIMPSON	JOWAE	5	L-54	L-73	L-107	L-97	W-129	W-133	2.0
119	JORDAN BLAKE	JOWAE	5	N-	L-56	W-135	L-63	W-115	L-74	2.0
120	DYSIREE MARTIN	JOWAE	4	L-82	L-83	L-110	W-135	W-132	L-75	2.0
121	LORIN TRICK	WEPSM	4	L-69	W-136	L-31	D-117	L-53	L-90	1.5
122	RACHEL WILLIAMS	FACRM	5	L-77	L-28	L-74	D-124	D-131	D-99	1.5
123	CALEB CORNELISON	SEYMM	3	D-128	W-125	L-49	L-89	L-88	L-91	1.5
124	JASMINE FOX	JCSJM	3	L-68	L-30	L-84	D-122	D-130	D-125	1.5
125	NICK MCGEE	KNNDE	3	D-87	L-123	L-90	L-45	D-126	D-124	1.5
126	D J DUNCAN	SVANM	4	L-72	L-67	L-132	L-104	D-125	W-135	1.5
127	MAX WALDROP	BTOWM	2	W-130	L-66	L-46	L-51	L-79	L-112	1.0
128	MATT STOCKWELL	MRCOM	1	D-123	L-87	D-117	L-77	L-80	L-104	1.0
129	L. WENDELTON	RSONE	3	L-100	L-78	L-39	L-80	L-118	W-136	1.0
130	ANDREW BOLHOFNER	OAKBE	1	L-127	D-90	L-111	L-52	D-124	L-107	1.0
131	BENJAMIN EVERETT	PEMHM	2	D-117	L-86	L-89	L-96	D-122	L-114	1.0
132	MILES QUIGLESS	KNNDE	5	L-83	;-103	W-126	L-110	L-120	L-115	1.0
133	ANDREW HARRIS	MRCOM	1	L-73	L-88	L-114	B-	L-113	L-118	1.0
134	WILLIAM KELLY	CPOPM	0	L-115	L-102	L-79	N-	W-136	L-116	1.0
135	ASHLEY WYRICK	MRCOM	1	L-33	L-81	L-19	L-120	L-116	W-126	0.0
136	ELIZABETH WYRICK	MRCOM	4	L-24	L-121	L-91	L-53	L-134	L-129	0.0

### WHITE TO MOVE



1W-c4, 1B-Ne7(1B-Nxc4, 2W-Rxc4!), 2W-b5!

### WHITE TO MOVE



1W-Bxe5, 1B-Qxe5, 2W-Qxe5, 2B-dxe5,  
3W-Bxe6!



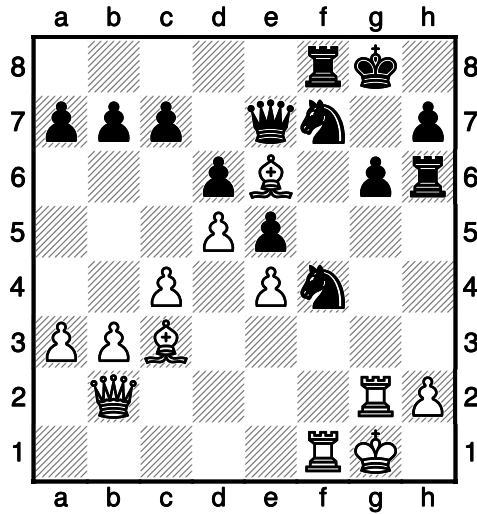
# 2005 SAINT LOUIS OPEN TOURNAMENT

SATURDAY, APRIL 23 AND SUNDAY, APRIL 24

SAINT LOUIS, MISSOURI

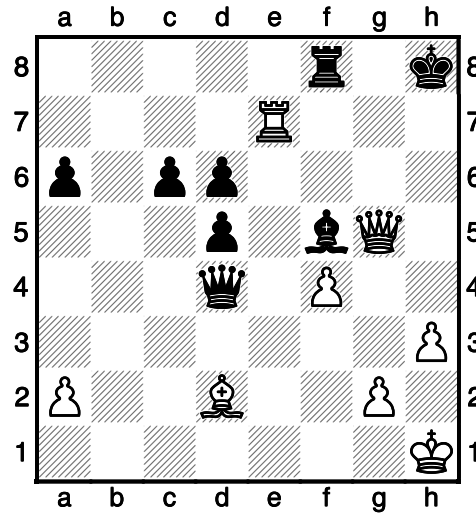
NAME	RATING	ROUND 1	ROUND 2	ROUND 3	ROUND 4	ROUND 5	SCORE
1 LOAL DAVIS	2200	W-22	W-13	W-9	W-7	W-3	5.0
2 M. PANAGIOTIS	1929	W-51	W-49	D-29	W-16	W-11	4.5
3 ROBERT JACOBS	2104	W-44	W-36	W-5	W-8	L-1	4.0
4 TODD PLAGEMANN	1960	D-50	W-32	W-14	D-11	W-19	4.0
5 JOSEPH GARNIER	1772	W-42	W-34	L-3	W-23	W-18	4.0
6 WALDO ODAK	2059	W-39	W-17	L-11	W-29	D-9	3.5
7 ADIL SKUKA	1901	W-25	W-30	W-21	L-1	D-12	3.5
8 SELDEN TRIMBLE	1873	W-41	W-31	W-33	L-3	D-17	3.5
9 DRITAN NERHATI	1837	W-45	W-38	L-1	W-20	D-6	3.5
10 KEVIN GUO	1834	W-40	L-21	D-34	W-30	W-22	3.5
11 WAYDE STALLMANN	1780	W-48	W-27	W-6	D-4	L-2	3.5
12 CESAREO RODRIGUEZ	1749	W-54	L-14	W-25	W-38	D-7	3.5
13 DENNIS HUMPHRIES	1728	W-55	L-1	H-	W-50	W-33	3.5
14 ROBERT FARNHAM	1716	W-23	W-12	L-4	D-33	W-31	3.5
15 MATTHEW CONWAY	1702	D-52	W-50	L-16	W-32	W-34	3.5
16 ALEX MARLER	1591	W-58	D-28	W-15	L-2	W-29	3.5
17 TOM EPLIN-ZAPF	1628	W-53	L-6	W-40	W-44	D-8	3.5
18 STEVEN BANGE	2004	L-34	W-61	W-26	W-37	L-5	3.0
19 MICHAEL RUDLOFF	1800	W-24	L-33	W-51	W-21	L-4	3.0
20 JOE HOFFMANN	1500	L-59	W-48	W-24	L-9	W-40	3.0
21 SAM MATTHIS	1414	B-	W-10	L-7	L-19	W-55	3.0
22 LAWRENCE RIDGE	1382	L-1	W-55	W-43	W-36	L-10	3.0
23 THOMAS REHMEIER	1423	L-14	W-54	W-60	L-5	W-48	3.0
24 MIKE COY	1227	L-19	W-35	L-20	W-43	W-38	3.0
25 LINWOOD MASON	1359	L-7	W-58	L-12	W-57	W-37	3.0
26 DERRICK BARTOTTO	1305	L-28	W-46	L-18	W-53	W-47	3.0
27 KEVIN CAO	1234	W-35	L-11	L-31	W-51	W-44	3.0
28 DANIEL JUENDEL	1956	W-26	D-16	D-37	D-31	N-	2.5
29 THOMAS FLEMING	1634	W-47	W-59	D-2	L-6	L-16	2.5
30 JAMES HODGE	1560	W-57	L-7	H-	L-10	W-46	2.5
31 ALEX VERGILESOV	1538	W-60	L-8	W-27	D-28	L-14	2.5
32 MAREK ZIOLKOWSKI	1478	H-	L-4	W-42	L-15	W-49	2.5
33 GARY HOWE	1432	W-43	W-19	L-8	D-14	L-13	2.5
34 BRAD HERBST	1326	W-18	L-5	D-10	W-49	L-15	2.5
35 JOHN SCHNEIDER	1742	L-27	L-24	W-61	L-47	W-50	2.0
36 DANIEL ROBERTS	1663	W-46	L-3	W-41	L-22	N-	2.0
37 BARRY WALKER	1562	D-61	W-52	D-28	L-18	L-25	2.0
38 SHAN SIDDIQI	1416	W-62	L-9	W-53	L-12	L-24	2.0
39 DANIEL TUTTLE	1336	L-6	L-53	W-55	W-48	W-56	2.0
40 HENRY CAO	1316	L-10	W-62	L-17	W-59	L-20	2.0
41 KEVIN POWER	1283	L-8	W-57	L-36	L-46	W-53	2.0
42 LOU SARMENTO	1284	L-5	H-	L-32	D-52	W-59	2.0
43 JACOB WILKINS		L-33	W-45	L-22	L-24	W-61	2.0
44 CRAIG BUTLER	1236	L-3	W-47	W-59	L-17	L-27	2.0
45 KYLE SCHWENT	1224	L-9	L-43	L-46	W-61	W-57	2.0
46 JOHN HERBST	1076	L-36	L-26	W-45	W-41	L-30	2.0
47 DOUGLAS HOWE	1169	L-29	L-44	W-56	W-35	L-26	2.0
48 PHILIP LIU	1156	L-11	L-20	W-62	W-39	L-23	2.0
49 MILTONGARBER	1604	W-56	L-2	H-	L-34	L-32	1.5
50 BRAD SCHLOSSER	1475	D-4	L-15	W-52	L-13	L-35	1.5
51 MALCOLM CLINE	1289	L-2	W-56	L-19	L-27	D-52	1.5
52 R. HAMMERSMITH	1098	D-15	L-37	L-50	D-42	D-51	1.5
53 WILLIAM TONG	1335	L-17	W-39	L-38	L-26	L-41	1.0
54 ROBERT LUCKEY	1155	L-12	L-23	W-58	N-	N-	1.0
55 CHARLES MANLEY	1121	L-13	L-22	L-39	W-58	L-21	1.0
56 BLAINE RUSSELL	1055	L-49	L-51	L-47	W-62	L-39	1.0
57 JAQKE AMANN	1018	L-30	L-41	B-	L-25	L-45	1.0
58 JAMES ALVERSON	908	L-16	L-25	L-54	L-55	W-62	1.0
59 ANDREW DAVIS	724	W-20	L-29	L-44	L-40	L-42	1.0
60 RADNALL PURICELLI	781	L-31	B-	L-23	N-	N-	1.0
61 EDWARD LI	1063	D-37	L-18	L-35	L-45	L-43	0.5

WHITE TO MOVE



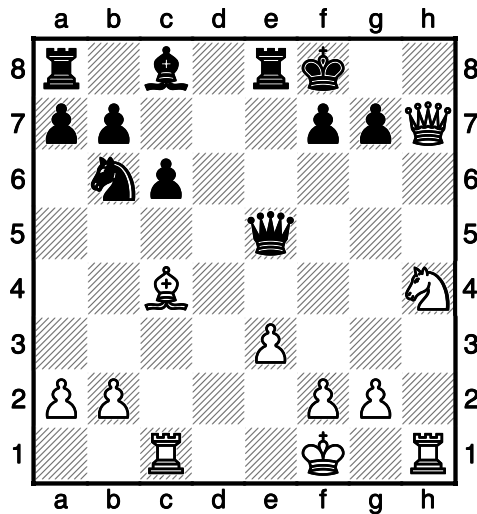
1W-Rxf4, 1B-exf4, 2W-Bh8!

WHITE TO MOVE



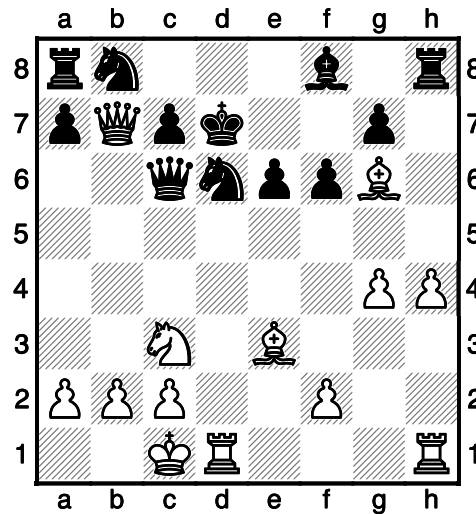
1W-Qh4+, 1B-Kg8, 2W-Qg3+, 2B-Kh8, 3W-Bc3!

WHITE TO MOVE



1W-Qg8+, 1B-Ke7(1B-Kxg8, 2W-Ng6 and 3W-Rh8++), 2W-Qxf7+, 2B-Kd8, 3W-Ng6, 3B-Qxb2, 4W-Rd1+4B-Bd7, 5W-Qxe8+, 5B-Kxe8, 6W-Rh8++

WHITE TO MOVE



1W-Be4, 1B-Qxb7, 2W-Bxb7!

# 2005 MISSOURI CLASS CHAMPIONSHIP TOURNAMENT

SATURDAY, JUNE 25 AND SUNDAY, JUNE 26

COLUMBIA, MISSOURI

## MASTER – EXPERT – CLASS A

	NAME	RATING	ROUND 1	ROUND 2	ROUND 3	ROUND 4	ROUND 5	SCORE
1	ZEB FORTMANN III	1974	W-3	W-8	D-2	W-4	W-5	4.5
2	JAMES ELLIS	2200	W-5	D-4	D-1	W-6	W-3	4.0
3	RONALD LUTHER	2200	L-1	W-6	W-8	W-5	L-2	3.0
4	FREDERICK KLEIST	2030	W-7	D-2	H-	L-1	W-6	3.0
5	SELDEN TRIMBLE	1873	L-2	W-7	D-6	L-3	L-1	1.5
6	THOMAS GAUL	1786	D-8	L-3	D-5	L-2	L-4	1.0
7	JEFFREY HERNANDEZ	1817	L-4	L-5	B-	N-	N-	1.0
8	KEVIN JOHNSON	2000	D-6	L-1	L-3	N-	N-	0.5

## CLASS B

	NAME	RATING	ROUND 1	ROUND 2	ROUND 3	ROUND 4	ROUND 5	SCORE
1	NATHAN SWINGER	1694	W-7	W-4	W-3	W-9	D-2	4.5
2	JOSE CLARIN	1709	L-4	W-12	W-5	D-3	D-1	3.0
3	NATHANIEL FAST	1715	W-12	W-8	L-1	D-2	D-6	3.0
4	TOM EPPLIN-ZAPF	1629	W-2	L-1	D-13	D-5	W-8	3.0
5	STEVEN BRIETZKE	1634	W-11	D-9	L-2	D-4	W-10	3.0
6	MIKE CLARK	1747	L-8	W-13	D-9	W-7	D-3	3.0
7	LUKE RUGGLES	1430	L-1	W-10	W-8	L-6	B-	3.0
8	KHIN KYI	1636	W-6	L-3	L-7	W-11	L-4	2.0
9	LAURENCE COKER	1756	W-10	D-5	D-6	L-1	N-	2.0
10	MATTHEW BARRETT	1689	L-9	L-7	W-14	W-13	L-5	2.0
11	ROBERT FARNHAM	1716	L-5	D-14	H-	L-8	W-13	2.0
12	THOMAS FLEMING	1634	L-3	L-2	H-	D-14	B-	2.0
13	KEVIN CAO	1224	W-14	L-6	D-4	L-10	L-11	1.5
14	RENTSE DASHZEVEG	1547	L-13	D-11	L-10	D-12	H-	1.5

## CLASS C

	NAME	RATING	ROUND 1	ROUND 2	ROUND 3	ROUND 4	ROUND 5	SCORE
1	BARRY WALKER	1562	W-10	W-16	W-2	D-4	W-5	4.5
2	FRANK SMITH	1447	W-5	W-6	L-1	W-10	W-6	4.0
3	THOMAS REHMEIER	1422	D-4	W-15	L-5	W-16	W-4	3.5
4	JOE HOFFMANN	1500	D-3	W-8	W-7	D-1	L-2	3.0
5	C J ARMENTA	1544	L-2	W-13	W-3	W-9	L-1	3.0
6	HENRY CAO	1306	W-13	L-2	W-15	W-11	L-3	3.0
7	SAM MATTHIS	1414	W-17	D-11	L-4	D-12	W-10	3.0
8	CHARLES WARD	1392	D-9	L-4	H-	W-17	D-12	2.5
9	BRIAN RYTERSKI	1463	D-8	W-18	W-11	L-5	N-	2.5
10	KYLE SILLIN	1450	L-1	W-12	W-17	L-2	L-7	2.0
11	RALPH BOWMAN	1512	W-14	D-7	L-9	L-6	H-	2.0
12	EDWARD BAUR	1524	L-16	L-10	W-18	D-7	D-8	2.0
13	TERRANCE SHUMAN	1459	L-6	L-5	L-14	W-18	W-15	2.0
14	TIM CAMPBELL	1441	L-11	L-17	W-13	L-15	B-	2.0
15	JENNIFER LAUPP	1452	D-18	L-3	L-6	W-14	L-13	1.5
16	C. MAYER-KLEIST	1443	W-12	L-1	H-	L-3	N-	1.5
17	VERGIL RENNE	1470	L-7	W-14	L-10	L-8	H-	1.5
18	MIKE COY	1227	D-15	L-9	L-12	L-13	B-	1.5

## CLASS D – CLASS E

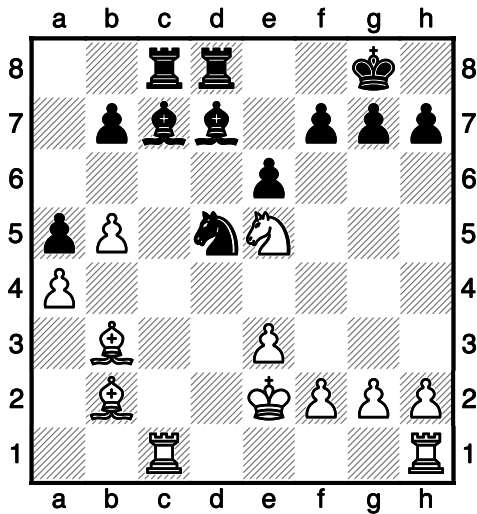
	NAME	RATING	ROUND 1	ROUND 2	ROUND 3	ROUND 4	ROUND 5	SCORE
1	CODY BRUGGLES	1227	W-6	W-3	W-4	L-1	D-7	3.5
2	TROY WOLZ	1385	L-3	W-7	W-6	W-1	D-4	3.5
3	CHRIS IVY	1126	W-2	L-1	W-5	D-4	B-	3.5
4	M. FINKELSTEIN	1371	W-7	W-5	L-1	D-3	D-2	3.0

5	TED PETERSON	888	B-	L-4	L-3	H-	W-6	2.5
6	HUGHES LEE	1048	L-1	B-	L-2	W-7	L-5	2.0
7	EDWARD LI	1078	L-4	L-2	B-	L-6	D-1	1.5

NOVICE – UNRATED

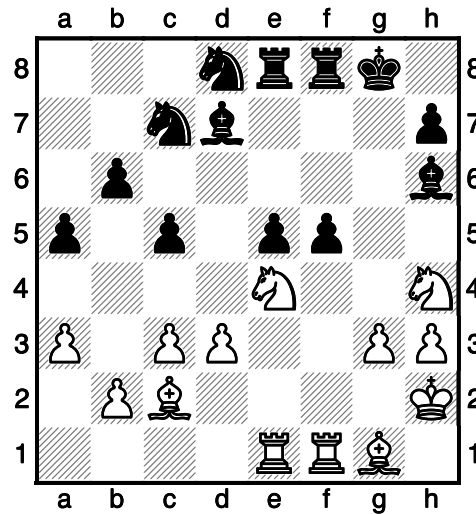
	NAME	RATING	ROUND	ROUND	ROUND	ROUND	ROUND	SCORE
			1	2	3	4	5	
1	JARED BRAY		W-6	W-2	W-3	W-5	H-	4.5
2	ARJUN KHURANA	898	W-7	L-1	W-4	W-3	W-5	4.0
3	PATRICK ANDERSON	843	B-	W-5	L-1	L-2	W-7	3.0
4	JABEZ CAMPBELL	297	L-5	B-	L-2	W-7	H-	2.5
5	JAMES ALVERSON	908	W-4	L-3	W-6	L-1	L-2	2.0
6	JILIA EPPLIN-ZAPF	480	L-1	W-7	L-5	H-	N-	1.5
7	REBECCA SUTTON		L-2	L-6	B-	L-4	L-3	1.0

WHITE TO MOVE



1W-Nxd7, 1B-Rxd7, 2W-bxd5, 2B-Rxd5, 3W-b6!

WHITE TO MOVE



1W-Nd6, 1B-Re7, 2W-h4Nxf5, 2B-Bxf5, 3W-Nxf5, 3B-Re6, 4W-Bb3

# 2005 MISSOURI OPEN TOURNAMENT

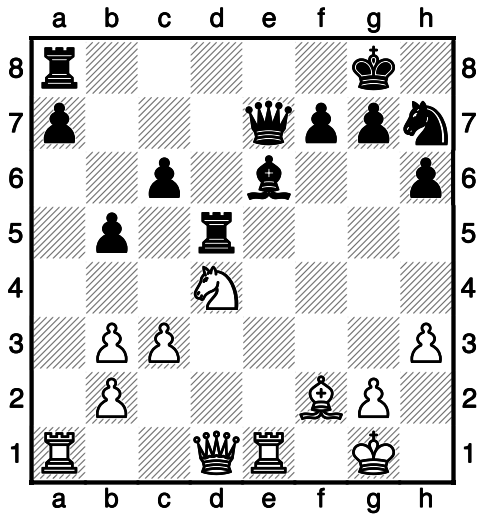
SATURDAY, SEPTEMBER 17 AND SUNDAY, SEPTEMBER 18

SAINT LOUIS, MISSOURI

NAME	RATING	ROUND	ROUND	ROUND	ROUND	ROUND	SCORE
		1	2	3	4	5	
1 THOMAS GOSSELL	2229	D-17	W-58	W-27	W-24	D-1	4.0
2 BOB HOLLIMAN	2147	W-41	D-6	W-11	W-25	D-1	4.0
3 JAMES MCLAUGHLIN	2136	W-18	D-10	W-29	W-26	D-8	4.0
4 JAMES VOELKER	2148	L-40	W-53	W-35	W-18	W-17	4.0
5 ZEB FORTMAN III	2066	W-31	W-28	D-24	D-8	W-20	4.0
6 P. MASSOUROS	1951	W-63	D-2	W-52	D-9	W-23	4.0
7 KEVIN GUO	1897	W-19	L-9	W-53	W-42	W-16	4.0
8 LOAL DAVIS	2207	W-14	D-26	W-12	D-5	D-3	3.5
9 ROBERT JACOBS	2116	W-21	W-7	H-	D-6	D-14	3.5
10 SELDEN TRIMBLE	1872	W-15	D-3	W-44	L-16	W-33	3.5
11 DARIUM MASUSHD	1728	W-16	D-25	L-2	W-54	W-26	3.5
12 STEPHEN LANDRUM	1805	D-29	W-33	L-8	W-30	W-35	3.5
13 CESAREO RODRIGUEZ	1768	W-57	L-24	H-	W-52	W-29	3.5
14 JOSEPH GARNIER	1765	L-8	W-47	W-45	W-43	D-9	3.5
15 KEVIN CAO	1516	L-10	W-51	D-55	W-37	W-25	3.5
16 RONALD LUTHER	2200	L-11	W-20	W-58	W-10	L-7	3.0
17 DENNIS HUMPHRIES	1718	D-1	D-44	W-36	W-32	L-4	3.0
18 ALEX MARLER	1629	L-3	W-23	W-46	L-4	W-42	3.0
19 BRAD SCHLOSSER	1624	L-7	L-50	W-64	W-48	W-44	3.0
20 JENNIFER LAUPP	1528	W-55	L-16	W-34	W-40	L-5	3.0
21 MILTON GARBER	1569	L-9	W-34	H-	D-44	W-43	3.0
22 JOE HOFFMAN	1534	L-26	W-31	L-23	W-55	W-45	3.0
23 JOSHUA MORRIS	1220	W-43	L-18	W-22	W-41	L-6	3.0
24 WALDO ODAK	2039	W-50	W-13	D-5	L-1	N-	2.5
25 JAMES DAVIES	2017	W-51	D-11	W-30	L-2	L-15	2.5
26 STEVEN BANGE	1941	W-22	D-8	W-54	L-3	L-11	2.5
27 MIKE CLARK	1805	H-	W-45	L-1	L-33	W-52	2.5
28 THOMAS GAUL	1802	W-42	L-5	H-	L-29	W-47	2.5
29 DAVID COLLINS	1464	D-12	W-56	L-3	W-28	L-13	2.5
30 GARY HOWE	1491	W-46	D-40	L-25	L-12	W-55	2.5
31 SURDAS MOHIT	1559	L-5	L-22	W-62	W-46	D-36	2.5
32 CHARLES WARD	1437	W-48	L-57	W-60	L-17	H-	2.5
33 KEVIN POWER	1383	W-39	L-12	H-	W-27	L-10	2.5
34 DOUGLS LANZON		W-36	L-21	L-20	H-	W-53	2.5
35 WEBB MILLER	1222	B-	H-	L-4	W-50	L-12	2.5
36 WILLIAM TONG	1208	L-34	W-62	L-17	W-49	D-31	2.5
37 LARRY WELLS	1084	H-	L-54	W-56	L-15	W-51	2.5
38 GABRIEL BOYD	1013	B-	L-41	L-42	D-53	W-54	2.5
39 KYLE BERRY	881	L-33	L-46	D-51	W-56	W-58	2.5
40 ROGER SMITH	1700	W-4	D-30	H-	L-20	N-	2.5
41 MATTHEW BARRETT	1654	L-2	W-38	W-47	L-23	N-	2.0
42 BRADLEY HERBST	1452	L-28	W-49	W-38	L-7	L-18	2.0
43 HENRY CAO	1431	L-23	W-59	W-48	L-14	L-21	2.0
44 PHILIP LIU	1220	W-49	D-17	L-10	D-21	L-19	2.0
45 V. ARUNACHALAM	1274	W-62	L-27	L-14	W-60	L-22	2.0
46 THOMAS WEISEL	1168	L-30	W-39	L-18	L-31	W-59	2.0
47 R. HAMMERSMITH	1135	W-64	L-14	L-41	W-58	L-28	2.0
48 HUGHES LEE	1097	L-32	W-63	L-43	L-19	W-61	2.0
49 JAMES CURRAN		L-44	L-42	W-61	L-36	W-60	2.0
50 ERIC EWALT	1559	L-24	W-19	H-	L-35	N-	1.5
51 FRANK SMITH	1541	L-25	L-15	D-39	W-59	L-37	1.5
52 LOU SARMENTO	1391	W-61	H-	L-6	L-13	L-27	1.5
53 VIKRAM ARUN	1366	W-59	L-4	L-7	D-38	L-34	1.5
54 DANIEL TUTTLE	1286	D-56	W-37	L-26	L-11	L-38	1.5
55 JARED BARGER	1073	L-20	W-61	D-15	L-22	L-30	1.5
556 KIRBY COMPTON	882	D-54	L-29	L-37	L-39	W-61	1.5
57 KENNETH JONES	2330	L-13	W-32	N-	N-	N-	1.0
58 ZUBIN CHANDRAN	1368	W-60	L-1	L-16	L-47	L-39	1.0
59 CHARLES MANLEY	945	L-53	L-43	W-63	L-51	L-46	1.0
60 NICHOLAS GOODNER	948	L-58	W-64	L-32	L-45	L-49	1.0
61 JAMES ALVERSON	834	L-52	L-55	L-49	W-63	L-48	1.0

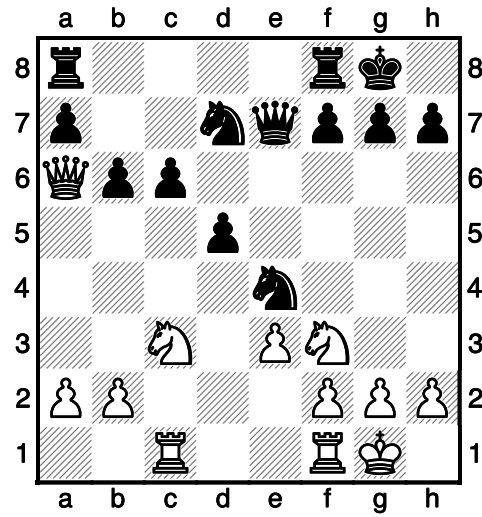
62	FRED SMITH	806	L-45	L-36	L-31	W-64	L-56	1.0
63	REID CAVALLINI	626	L-6	L-48	L-59	L-61	W-64	1.0
64	CHARLES GASSOWAY		L-47	L-60	L-19	L-62	L-63	0.0

WHITE TO MOVE



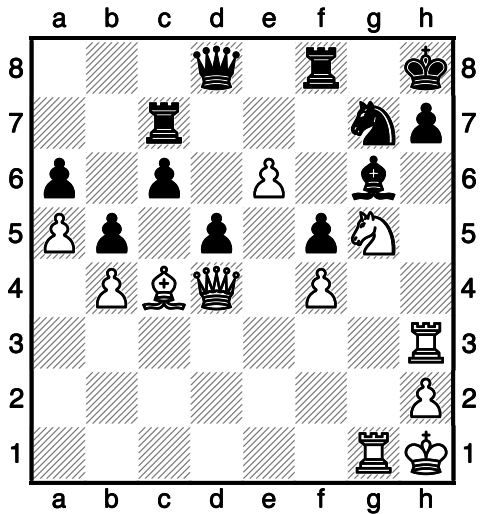
1W-Nxc6, 1B-Qd7, 2W-Ne7+, 2B-Qxe7,  
3W-Qxd5!

WHITE TO MOVE



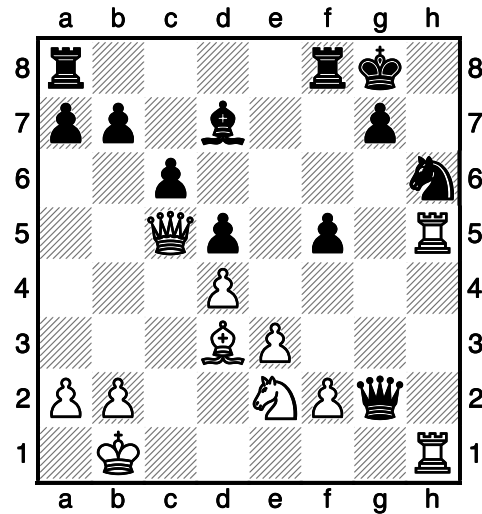
1W-Qb7, 1B-f8Rc8(1B-Qd6, 2W-Nxe4, 2B-dxe4,  
3W-Rxc6), 2W-Nxd5, 2B-Qd6(2B-cxd5,  
3W-Rxc8+!), 3W-Rxc6!

WHITE TO MOVE



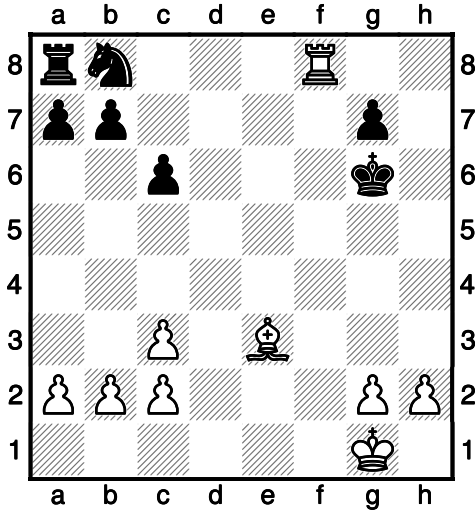
1W-Nf7+, 1B-c7Rxf7(1B-Bxf7, 2W-Qxg7++),  
2W-exf7, 2B-Rxf7, 3W-Rxg6!

WHITE TO MOVE



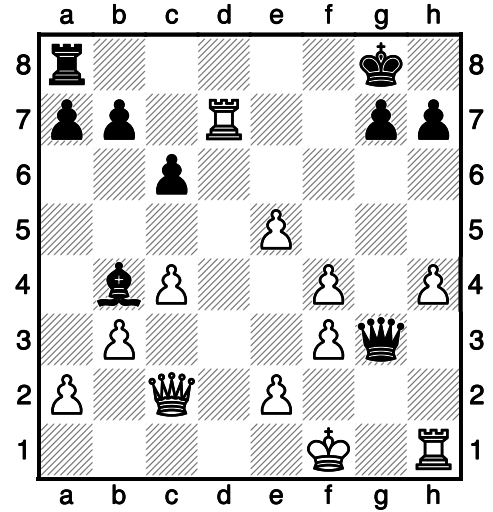
1W-Rxh6!(1B-gxh6, 2W-Rg1!)

WHITE TO MOVE



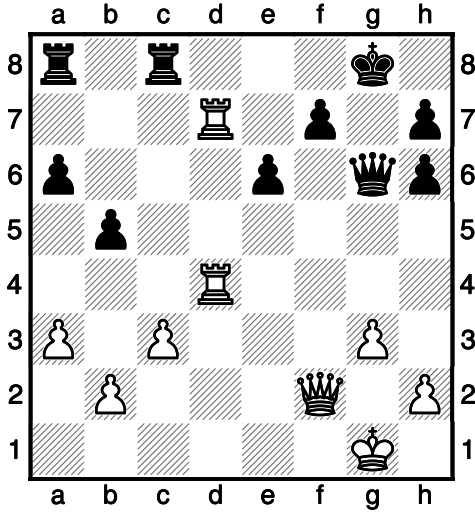
1W-Bf4!

WHITE TO MOVE



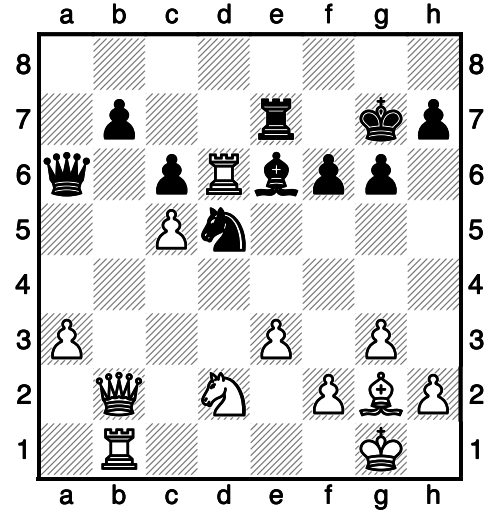
1W-Rxg7+, 1B-Kxg7, 2W-Rg1!

WHITE TO MOVE



1W-Rg4!(1B-Qxg4, 2W-Qxf7+, 2B-Kh8,  
3W-Qxh7++)

WHITE TO MOVE



1W-Bxd5!(1B-cxd5, 2W-Rxa6 and 1B-Bxd5, 2W-Qxf6+!)